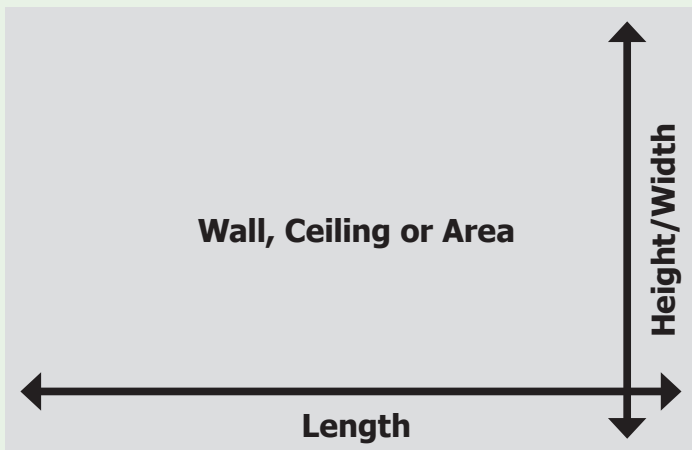




CedarSafe®

Aromatic Cedar Installation Instructions

How much Aromatic Cedar do I need?



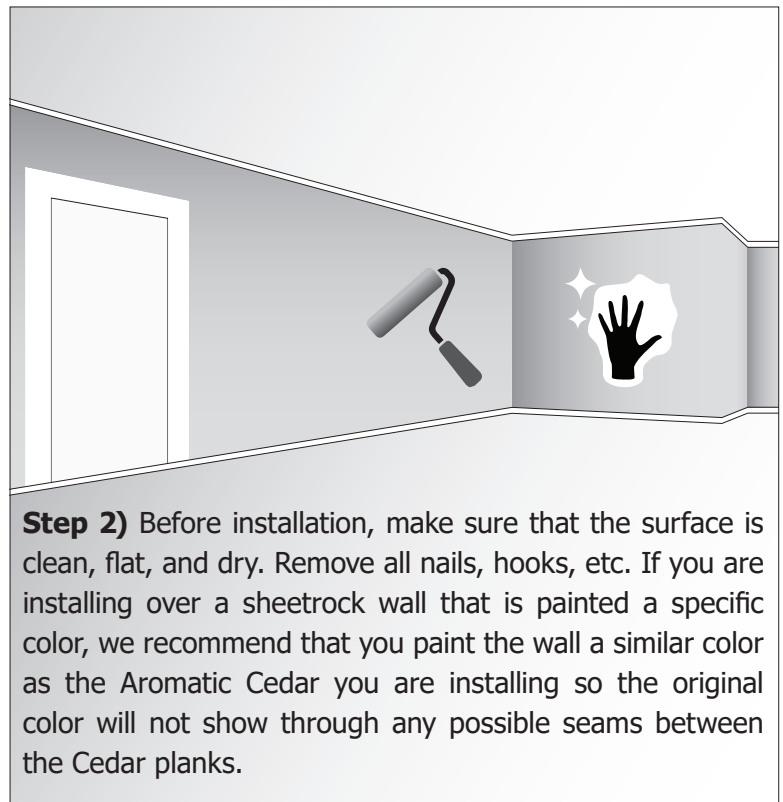
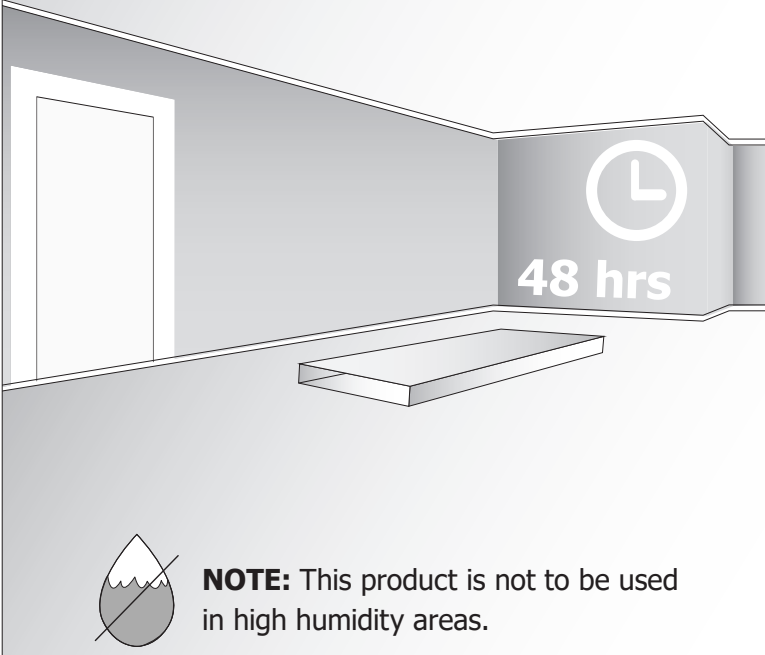
Measure the length and height/width of the wall, ceiling or area where the cedar will be installed. Then use the equation below to calculate the amount of square feet of shiplap you will need.

Length x Height = Sq. Inches

Sq. Inches
144 = **Sq. Feet**

Read Carefully Before Installation

Step 1) Before installing your Aromatic Cedar, they need to acclimate inside their box in the area they will be installed for a minimum of **48 hours**.



Step 3) Recommended nail length is 1-1/2"(38mm) colored paneling nails. In older houses with plaster and lath, use 2" nails. If splitting occurs, use an electric drill and appropriate bit to pre-drill holes for the nails. Subfloor adhesive (not water based) may also be used either by itself or with nails or mechanical fasteners.

