



CONFERENCE

OCTOBER 2ND - 4TH
GALVESTON, TEXAS



MONDAY

8:00 AM - 9:00AM

BREAKFAST AND OPENING SESSION

9:00 AM - 10:30AM

KEY NOTE - DR. TEMPLE GRANDIN

10:30 AM - 10:45 AM

ANNOUNCEMENTS

10:45 AM - 11:10AM

BREAK - VENDOR VISITS

11:10 AM - 12:15 PM

BREAKOUT SESSIONS

12:15PM - 1:00PM

PLATED LUNCH

1:00PM - 2:00PM

KEYNOTE - APSE BOARD OF DIRECTORS

2:00PM - 2:30 PM

BREAK - VENDOR VISITS

2:30PM - 3:15PM

BREAKOUT SESSIONS

3:15PM - 3:30PM

BREAK

3:30 PM - 4:20PM

BREAKOUT SESSIONS

4:20 PM - 4:30PM

BREAK

4:30 PM - 5:30PM

BREAKOUT SESSIONS

TUESDAY

8:00 AM - 9:00AM	BREAKFAST AND OPENING SESSION
9:00 AM - 10:00AM	KEY NOTE - DR. JAMES WILLIAMS
10:00AM - 10:30AM	BREAK - VENDOR VISITS
10:30AM - 11:30AM	BREAKOUT SESSIONS
11:30AM - 1:00PM	AWARDS LUNCHEON
1:00PM - 1:15PM	BREAK
1:15PM - 2:00PM	BREAKOUT SESSIONS
2:00PM - 2:30PM	SNACK BREAK WITH VENDORS
2:30PM - 3:30-PM	BREAKOUT SESSIONS
3:40 PM - 4:40PM	BREAKOUT SESSIONS

THANK YOU



Amerigroup

FOR SPONSORING OUR AWARDS
LUNCHEON

WEDNESDAY

8:00 AM - 8:30AM

BREAKFAST AND OPENING SESSION

8:45AM - 9:45AM

BREAKOUT SESSIONS

10:00 AM - 11:30 AM

PANEL DISCUSSION

11:30AM - 12:00PM

VENDOR WRAP UP - PRIZES

12:00PM - 1:00PM

ROUND TABLE LUNCHEON

The Association of People Supporting Employment First (APSE) is the only national membership organization focused exclusively on Employment First to facilitate the full inclusion of people with disabilities in the workplace and community.



In partnership with the Texas Governor's Committee on People with Disabilities



Welcome to the 2023 Texas Association of People Supporting Employment First (TX APSE) inaugural annual conference, where we celebrate and promote Employment First for people with disabilities. I am Britni Miles, the president of TX APSE, and your host for this event.

TX APSE is a diverse organization that supports competitive integrated employment as the first and preferred option for people with disabilities. We believe that everyone can work in the community with fair pay and benefits.

At this conference, you can choose from over thirty sessions and earn up to 14.25 CEUs through Commission on Rehabilitation Counselor Certification (CRCC) and University of North Texas Workplace Inclusion and Sustainable Employment (UNT WISE). This conference also offers an opportunity to sit for the Certified Employment Support Professional (CESP) exam. You will learn from experts across the nation who will share their insights and success stories on how to advance Employment First in Texas. You will also network with other attendees, exhibitors, and sponsors who share your passion and vision for inclusive employment.

We are honored to have two amazing keynote speakers: Dr. Temple Grandin and Dr. James Williams. Dr. Grandin is a world-renowned scientist, animal behaviorist, autism advocate, and author. Dr. Williams is a Transitional-Vocational Rehabilitation Expert, TX APSE's Treasurer, former CEO of Bloom Consulting headquartered in TX, and Iowa's Vocational Rehabilitation Administrator and person with a disability.

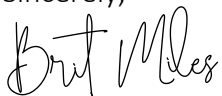
We are also excited to have a panel of subject matter experts on Employment First, featuring representatives from various organizations that help people with disabilities find and keep jobs. The Panelists are: Statewide Independent Living Council (SILC), Texas Health and Human Services (HHS), UNT WISE, Disability Rights Texas (DRTx), The Arc of Texas, Governors Committee on People with Disabilities (GCPD), Texas Workforce Commission-Vocational Rehabilitation Services (TWC-VR), and TX APSE.

This conference was made possible by the Texas Beacons of Excellence project, funded by the Rehabilitation Services Administration's Disability Innovation Fund- SWTCIE project, which aims to help subminimum wage earners with the most significant disabilities attain competitive integrated employment outcomes.

I would like to thank all our speakers, panelists, exhibitors, volunteers, and our Professional Development Committee for making this conference possible. I would also like to thank our sponsors for their generous support: Corporate Sponsor: Amerigroup; Champion Sponsors: UNT WISE, Visual Language Professionals, and UNT Department of Rehabilitation and Health Services, and our Advocate Sponsors: Bloom Consulting and Imagine Enterprises.

I hope you enjoy this conference and learn something new that will help you in your work or life. I also hope you make new connections and friends along the way. Thank you for being part of TX APSE and our mission to make Employment First a reality for all Texans.

Sincerely,

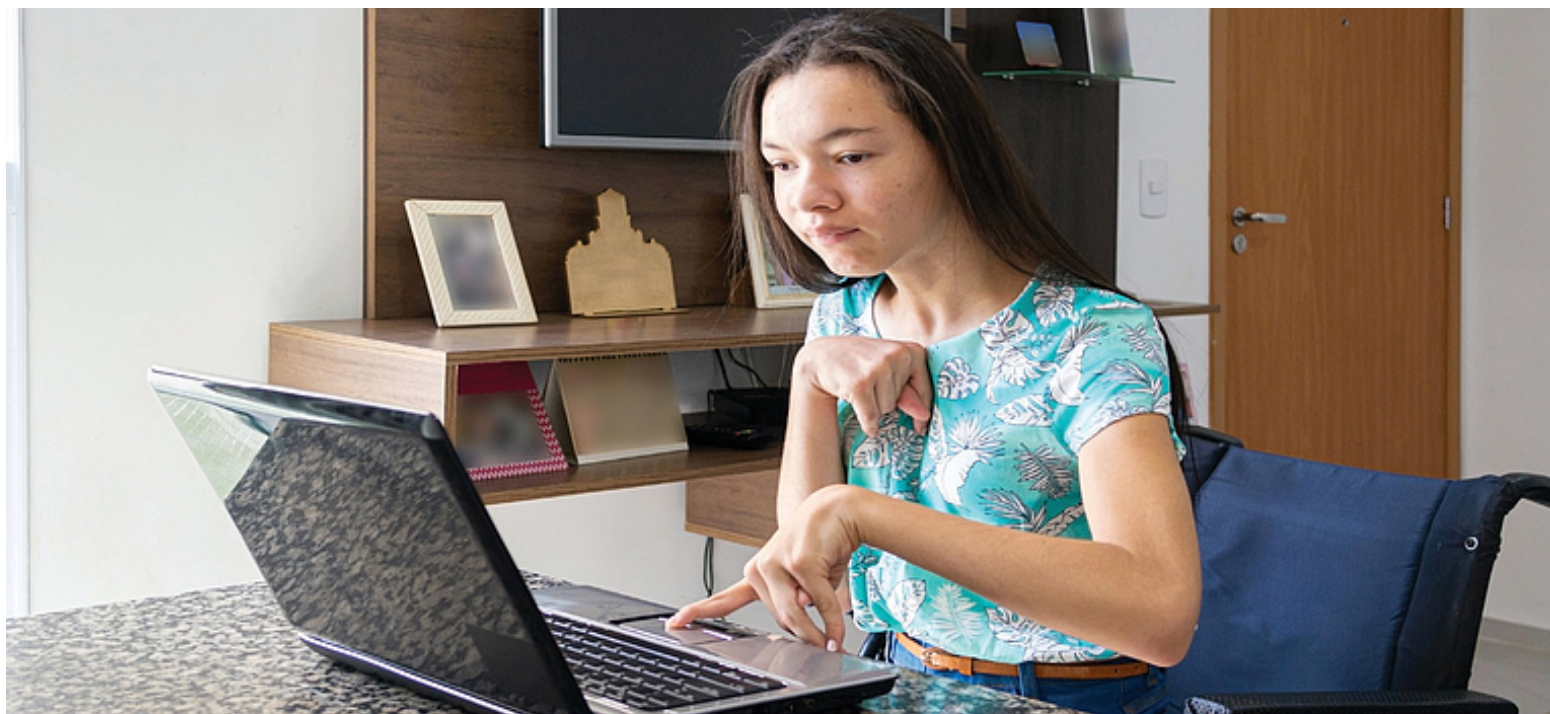


Texas APSE President

P.S. Happy National Disability Employment Awareness Month and 10th Anniversary of Texas passing The Employment First Policy (SB1226)!

P.P.S. Good luck to you if you are taking the CESP exam on Wednesday!





Have a great 2023

First Annual APSE Texas State Conference!

Employment First, Employment Equity, Employment For All!

Get connected



www.myamerigroup.com/TX

1-800-600-4441 (TTY 711)

TXMKTAL-1012-19

EVENTS

REGISTRATION OPEN

MONDAY AND TUESDAY 7:00AM - 4:00PM

WEDNESDAY 7:00AM - 12:00PM

OPENING SESSION

MONDAY OCTOBER 2ND @ 8:00AM

TEXAS APSE KEYNOTE

MONDAY OCTOBER 2ND @ 1:00PM

Where are we at with Employment First in Texas? What are the barriers and challenges of navigating employment services? Who is Texas APSE, and how are they helping advance Employment First? This presentation will provide practical solutions and resources to improve employment outcomes for Texans with Disabilities. Let's do this!

TEXAS APSE - AWARDS LUNCHEON

TUESDAY OCTOBER 3RD AT 11:30AM

Please join us on Tuesday for a special luncheon. Sponsored by Amerigroup, our 1st annual Awards luncheon will occur on Tuesday, October 3rd, in Music Hall. During this time, we will recognize the individuals who will receive awards in 6 different categories. This is an excellent opportunity to hear about the progress that has been made towards Employment First in Texas by these fantastic companies and individuals.

EXPERT PANEL DISCUSSION & ROUND TABLE LUNCH

WEDNESDAY OCTOBER 4TH @ 10:00AM TO 11:30 AM

Please join us Wednesday at 10 am for a Panel Discussion where leaders from around the state will present on their organization's work in Employment First for Texans with Disabilities. Each panel presenter will have time to provide an update. Following the panel, each presenter will have a table to "host" for lunch. During these round table discussions, panel presenters will have a chance to have a more intimate discussion on their organization and the work they are doing.

APSE AFTERHOURS

MONDAY NIGHT - MEET AT 6:30PM - HOTEL GALVEZ BAR



SPECIAL THANKS TO OUR SPONSORS

-----Corporate Sponsor-----



-----Champion Sponsors-----



-----Advocate Sponsors-----



MONDAY SCHEDULE

8:00AM - 9:00AM

Breakfast and Opening Session

Location - Music Hall

Welcome and Texas APSE Conference Kick-OFF

Presenters - Texas APSE Board of Directors

Where are we at with Employment First in Texas? What are the barriers and challenges of navigating employment services? Who is Texas APSE, and how are they helping advance Employment First? This presentation will provide practical solutions and resources to improve employment outcomes for Texans with Disabilities. Let's do this!

9:00AM - 10:30AM

Location - Music Hall

Keynote Speaker - Dr. Temple Grandin

Presenter- Dr. Temple Grandin

10:30AM - 10:45AM

Location - Music Hall

Conference Announcements

10:45AM - 11:120AM

Break with Vendors

Please visit our vendors and sponsors. Take time to learn about the services they provide and get some great SWAG! Complete your bingo card for a free conference registration drawing for 2024!

11:10AM - 12:15PM

Breakout Sessions

Universal Design and Disability Etiquette

Presenter - Lauren Taylor

Location - West Parlor

This presentation addresses Universal Design - structural and functional design that is accessible to all. It will outline the seven principles of Universal Design, as well as provide a foundation for the audience to begin thinking through ways they can make their respective environments more universally designed. Additionally, audience will learn about both appropriate and inappropriate ways to interact with people with disabilities. Understanding how to interact with people with disabilities will help further the audience's comfortability and ability to implement elements of Universal Design in their everyday practices.

MONDAY SCHEDULE CONTINUED

11:10AM - 12:15PM

Breakout Sessions Continued:

From S'mores to the Boardroom: How Summer Camps for Students with Disabilities are Shaping the Next Generation of Rock Stars

Presenters - Dr. Karia Bunting and Dr. Kimberly R. Bunting

Location - Veranda

"Camping to Work" is an innovative summer camp program that combines recreational activities with job skills training to provide support, encouragement, and skills training to students with disabilities. By improving their social and communication skills, teamwork, and leadership qualities, students gain confidence in their ability to succeed in the workplace. The program also offers personalized support to develop individualized career plans and ongoing coaching to aid in the job search process. Based on research studies, the program has the potential to help students overcome barriers to employment and achieve successful employment outcomes, thereby improving their overall quality of life.

Turning Lemons Into Lemonade - Increasing Employment Outcomes with Justice-Involved Youth

Presenter - Rolanda Parsons

Location - East Parlor

Will present and explore as an advocate strategies that strengthen employment outcomes among justice-involved youth with disabilities amongst avenues that increase labor market participation, social involvement, and possibly job satisfaction.

12:15PM - 1:00PM

Plated Luncheon

Location - Music Hall

1:00 PM - 2:00PM

Texas APSE Board of Directors Presentation

Presenters - Brit Miles and Norrine Gill

Location - Music Hall

Where are we at with Employment First in Texas? What are the barriers and challenges of navigating employment services? Who is Texas APSE, and how are they helping advance Employment First? This presentation will provide practical solutions and resources to improve employment outcomes for Texans with Disabilities. Let's do this!

2:00PM - 2:30PM

Break with Vendors

Please visit our vendors and sponsors. Take time to learn about the services they provide and get some great SWAG! Complete your bingo card for a free conference registration drawing for 2024!

MONDAY SCHEDULE CONTINUED

2:30PM - 3:15PM

Breakout Sessions

College Support Enhancing Job Placement Outcomes

Presenter - Jamie Moyer

Location: - West Parlor

Learn how an innovative College Support program can influence and enhance professional level Job Placement for students with disabilities. Bloom Consultings' Campus Connections program provides students with an opportunity to continue their transition with additional professional level Job Placement support upon completion of their post-secondary education.

Texas A&M Horticultural Options in Plant Sciences (HOPS) Program

Presenter - Xuan (Jade) Wu, Ph.D., AIFD, CFD, EMC

Location - Veranda

The Horticultural Options in Plant Sciences (HOPS) program at Texas A&M University, College Station, is a two-semester post-secondary training program founded in 2021. This program aims to provide instruction and support for young adults with disabilities to gain the necessary skills and experiences in work readiness to successfully transition into competitive integrated employment in the horticulture industry. The program focuses primarily on post-secondary opportunities, career exploration, work-based learning, job readiness, and self-advocacy. There are three tracks that students can choose from, namely, landscape management, greenhouse/nursery production, and floral design. During the fall semester, students take content-specific courses based on their chosen track. The courses include both lecture and lab components. Additionally, students take professionalism classes and enrichment courses. During the spring semester, students participate in internships. Students also have the opportunity to take industry-recognized credential tests. This first-of-its-kind program provides wraparound support for student success.

CPA to Closure

Presenter - Janna Redding

Location - East Parlor

During this presentation, attendees will review the CPA to closure processes used for TWC/VRS SE referrals. Using the TWC/VRS CPA/SE process, the presenter will share tips and tricks she has developed over the last five years to help 100's of clients find the right job for them. With a 100% successful TWC/VRS closure rate, the presenter will share ideas for completing the CPA assessment for various disability levels and ways to use that information to find the right job for each client.



MONDAY SCHEDULE CONTINUED

3:30PM - 4:20PM

Breakout Sessions

Empower Yourself & Improve Your Employability !!! With Professional Image Consultant and Life Skills Specialist Chelsea Nguyen.

Presenters: Chelsea Nguyen & George Battiste

Location - West Parlor

Do you have a disability and would like to learn new skills and tips to take your career to the next level and go for that dream job you've always wanted? Curious to know what can make or break future employment opportunities? And would you like some expert advice on how to dress for success and impress your future interviewers so that you create a great first impression that will last throughout your career and keep you on the forefront of the minds of hiring decision makers? If so, then this is the seminar for you! Join Chelsea Nguyen who is a Professional Image Consultant, Career Coach, Life Skills Specialist and Beauty Expert who has empowered thousands of individuals who are blind or disabled in-person and online worldwide with over 10 years' experience working in the field of Vocational Rehabilitation.

From Finger Pricks to Paychecks: The role of Supportive Programming and Community in Navigating the Job Market with Diabetes

Presenter - Dr. Kimberly R. Bunting, MPH

Location - Veranda

"It's Sweeter to Work" is a unique program designed to provide tailored support, encouragement, and diabetes education to individuals with diabetes in Texas. The program recognizes the importance of managing diabetes while also helping individuals find and maintain employment. Through the program, participants receive personalized support from diabetes educators who work alongside them to manage their condition and build job-seeking skills. The program's emphasis on individualized support, encouragement, and diabetes management aligns with evidence-based practices in vocational rehabilitation and transition services. By providing holistic support to individuals with diabetes, "It's Sweeter to Work" aims to help participants achieve successful employment outcomes and improve their overall quality of life.

Serving Students with IDD (Intellectual and Developmental Disabilities)

Presenters - Christine Price and Tammy Hanna

Location - East Parlor

Some College's offers a variety supports to help adults with IDD achieve their goals. Working together with agencies and schools, they provide comprehensive supports along side their courses which leads towards increased independence and employ-ability. Whether a student wants to continue their education or jump into the workforce, giving them the jumpstart to be successful.

THANK YOU VENDORS



TEXAS A&M UNIVERSITY
Center on Disability
and Development
cdd.tamu.edu



TUESDAY SCHEDULE

8:00AM - 9:00AM

Breakfast and Announcements

Location - Music Hall

9:00AM - 10:00AM

Keynote - Dr. James Williams & Chrissy Willams

Living and Loving with ASD

Location - Music Hall

Relationships form in the most interesting ways and they don't always make sense, but having autism spectrum disorder makes them even more of a puzzle. Join the presenters as they discuss how their lives and experiences brought them together. They will discuss how their relationship and daily lives are challenged, yet strengthened by James's diagnosis of autism. In addition, they will present tips and resources for teaching relationshipsocial skills to high-functioning individuals with ASD. Lastly, this session will further prove that no matter what, an ASD will never be stronger than love.

10:00AM - 10:30AM

Break with Vendors

Please visit our vendors and sponsors. Take time to learn about the services they provide and get some great SWAG! Complete your bingo card for a free conference registration drawing for 2024!

10:30AM - 11:30AM

Breakout Sessions

Helping Youth with Autism Enter Competitive Employment: Unlocking the Potential

Presenter - Dr. Paul Wehman

Location - West Parlor

The purpose of this presentation is to describe how to implement a 9-month internship program followed by placement into competitive integrated employment using supported and customized employment. This was part of a multiyear study and we will use high-resolution instructional 3-4 videos to describe training and outcomes. Participants in the program were between 18 and 25 and had autism and intellectual disabilities at a severe level as their disabilities. We will explain the role of employment specialist, crucial role of company partnerships and the time to support other employment metrics, which document the success of the program. This presentation is most appropriate for direct service practitioners like employment specialists, transition specialists, CRP trainers and parent/family members.

Job Carving and Job Placement for the Hospitality Industry

Presenters - Lauren Smith and Ruth Thompson

Location - Veranda

Learn how a non-profit restaurant began carving jobs to meet a person's ability. See how Hugs Cafe Inc has grown from a flagship restaurant just north of Dallas, Texas, to four unique programs that supports adults with disabilities in their personal and professional journey.

TUESDAY SCHEDULE CONTINUED

10:30AM - 11:30AM

Breakout Sessions Continued

Employment First Expansion: Strengthening Cross-Agency Collaboration to Improve Employment Outcomes for Texans with Disabilities.

Presenters - Mayra Gutierrez, Lauren Chenoweth, Carrie Dalglish-Burns and Kathrine Mahler

Location - East Parlor

In Texas, employment is the priority and preferred outcome for working-age individuals with disabilities who receive public benefits. The need to develop and expand innovative service delivery models for individuals with the most significant disabilities and to build a competent and reliable service provider base are heightened by changes to the federal Medicaid home and community-based services (HCBS) Settings Rule that takes effect in March 2023, and the passage of Senate Bill 50 (SB 50) from the 87th Regular Session of the Texas Legislature (May 2021). TWC-VR, HHSC, and TEA have partnered to expand employment-first efforts, including a Tri-Agency Workgroup to strengthen our collaboration and coordination of services to improve employment outcomes for Texans with the most significant disabilities.

11:30AM - 1:00PM

Awards Luncheon

Location- Music Hall

1:15PM - 2:00PM

Breakout Sessions

Building Business Relationships

Presenters - Jennifer McDonough

Location - West Parlor

One of the challenges new and seasoned employment specialists face is how to connect with businesses to build meaningful relationships. In this session, we will share information from a national research study on how businesses want to be involved in disability initiatives and their wants and needs in a professional relationship. Participants will leave with tools to utilize in their home communities to improve their success rates in establishing relationships and learning business's needs.



TUESDAY SCHEDULE CONTINUED

1:15PM - 2:00PM

Breakout Sessions Continued

Child maltreatment and its impact across the lifespan: Applying trauma informed principles in rehabilitation counseling

Presenter - Justin Watts

Location - Veranda

This presentation will frame child maltreatment (with a focus on childhood psychological maltreatment; CPM) through a developmental lens, discussing issues in functioning related to psychosocial development and attachment across the lifespan. Barriers to effective treatment for those exposed to CPM as it relates to the counseling working alliance, developing supportive social networks and regulating the stress response. Specifically, evidence-based interventions and complementary approaches will be discussed to comprehensively address post-traumatic sequelae and issues those with CPM histories experience. Further, application of trauma-informed principles within rehabilitation counseling practice will be discussed among emerging adult and adult populations.

Empowering Employers to Manage Equitably

Presenter - Cheyenne Jock

Location - East Parlor

It is not uncommon for job coaches to be expected to manage one of their program participants. However, we, as supported employment professionals, know that we do not have the time or expertise to fill a manager or supervisor's role, nor does this benefit any of the individuals with disabilities who they currently employ. During this interactive presentation, we will learn how to empower, support, and nurture employers so that they are able to manage their staff effectively and equitably. We will also discuss how to get employers on board with inclusive hiring practices, set them up for success, and set reasonable expectations from the very beginning.

2:30pm - 3:30pm

Breakout Sessions

Social Security Administration Disability Benefit Programs and Work

Presenter -Nehtra Davis-Moore, Elizabeth Ibarra, Richard Kessinger, and Ellen Dingus

Location - Veranda

The presentation will focus on SSA disability benefit programs while working. The presentation will cover basic definitions related to SSA disability benefits and help to diminish the myths about working and losing benefits. It will touch on work incentives available to individuals who are working and receive benefits from the SSA. This presentation will also help show how people have more of their own money when they are working and receive benefits.

TUESDAY SCHEDULE CONTINUED

2:30PM - 3:30PM

Breakout Sessions Continued

Failure is Not Always a Bad Thing

Presenter - Denise Catalano

Location - West Parlor

Successful transition involves the collaboration of all the stakeholders involved, including the adolescent or young adult receiving services, parents and guardians, high school educators, community support providers, State/Federal agencies, etc. At each level there is an expectation of various outcomes to be achieved by the individual receiving transition services, with all parties contributing in some way to those outcomes. The overall outcome, however, is to provide opportunities for the adolescent with a developmental disorder to achieve maximum independence and quality of life, which takes learning. But learning any task doesn't often happen on the first attempt, sometimes not even the second. What is important is the reaction of those involved. Is it interpreted as a failure by the individual, the parents, service providers, or educational staff? Or is it viewed as an indicator for more exploration and growth? This presentation will provide an overview of what research literature can tell us about the perspectives and relationships among stakeholders, describe a growth mindset approach to service delivery and assessment of outcomes, and identify strategies to be considered and discussed so that communities can facilitate a sustainable growth-mindset environment that affects all levels of the transition system.

How to Utilize Peer Support in Finding and Securing Employment

Presenters - Gordon Butler and Jax Evans

Location - East Parlor

In our almost 20 years of experience providing employment services for those living with mental illness and substance use, we have discovered how valuable peer support is in securing meaningful employment as well as maintaining that job. We have been involved in the Money Follows the Person (MFP) pilot program, creating ICCD clubhouses, working within the mental health system, and developing peer specialists all with the goal of helping those living with disability integrate into the community to their fullest potential, of which employment is a key component. Our presentation will show you how to fully utilize people with lived experience in the process of securing and maintaining employment.



TUESDAY SCHEDULE CONTINUED

3:40pm - 4:40pm
Breakout Sessions

The Pathway to Employment; How to Utilize Medicaid Waivers and Vocational Rehabilitation Services when seeking Competitive, Integrated Employment.

Presenters - Lauren Chenoweth, LMSW QIDP, Ellen Dingus MRC, M.Ed., CRC, Marc Mullins, MA, CTCM, & Kristi Miller

Location - West Parlor

A guide to navigate the intertwined services of Texas Workforce Solutions- Vocational Rehabilitation Services (TWS-VRS) and Home and Community Based Services Medicaid waivers on the pathway to competitive, integrated employment. Beginning with an overview of both programs and finishing by working through the sequencing of services this presentation will address the following common questions: what are waivers, what employment related services do waivers provide, what is the TWS-VRS process, who pays for what and in what order?

Preparing Your Neurodiverse "Child" for Meaningful Employment No Matter Their Age!

Presenter - Jacquelyn Mulkey Engelbert

Location - Veranda

Adults with neurological differences, such as autism, ADHD, or anxiety disorders, bring a unique perspective and strengths to the world. Their neurodivergent minds often excel in areas of focus, creativity, attention to detail, and problem-solving. While facing societal challenges in areas like communication and social interaction, they bring fresh ideas and alternative ways of thinking. These adults demonstrate resilience and adaptability, as they navigate a world that may not always understand or accommodate their specific needs. With the right support and inclusive environments, their diverse neurology can lead to remarkable achievements and breakthroughs in various fields. Come learn how to support a loved one (or student/employee) ages 9 to 59 as they move towards finding meaningful and inclusive employment.

Brainstorming Pre-ETS: Providing Pre-Employment Transition Services (Pre-ETS) in Rural Communities via the iGROW Model

Presenters - Kelly Majewski

Location - East Parlor

Collaboration between schools and vocational rehabilitation to incorporate Pre-ETS as part of a student's transition plan can enhance secondary transition planning efforts as well as opportunities for students with disabilities to increase postsecondary success. Because little is known about the impact of Pre-ETS in rural communities, the I Generate Rural Opportunities for Work (iGROW) model was developed to demonstrate promising practices and positive impact with all stakeholders involved. Come learn about the rural Pre-ETS model iGROW, and how lessons learned might further enhance the field in how we collaborate as transition teams and meet the diverse needs of students with disabilities who live, work, and attend school in rural communities.

WEDNESDAY SCHEDULE

8:00AM - 8:30AM

Breakfast & Opening Remarks

Location - Music Hall

8:45AM - 9:45AM

Breakout Sessions

Effective Strategies to High Support Need Individuals with Behavioral Challenges in Competitive Integrated Employment

Presenter - Lauren Avellone

Location - West Parlor

This session will provide in-depth information regarding the specific types of supports used to increase the inclusion of individuals with disabilities who display challenging behavior in competitive integrated employment. Work-related behavior and social skills are critical to employment success yet can be challenging for individuals who have significant impact from their disabilities. Dr.s Schall and Avellone will demonstrate how evidence-based strategies can be used to increase social skills and improve competitive, integrated employment outcomes. They will describe the "nuts and bolts" of providing evidence-based instructional and behavioral strategies in employment supports.

Engaging Families in the Employment Process

Presenter - Crystal Hince

Location - Veranda

When speaking with service providers, it is very common to hear that families are a perceived barrier to success in Supported Employment and Customized Employment. In this breakout session, I will dive into the research that shows that when providers do engage with families, it leads to better outcomes for individuals with disabilities. I'll address concerns specific to families and share information from the family's perspective in regards to engagement.

The session will also include, how to be more culturally aware when engaging with families, strategies to promote engagement, and how to promote positive collaboration among providers and families throughout the competitive integrated employment process.

Help Parents Overcome Denial And Support Through Their Child's Transition to Adulthood with Disabilities

Presenter - Andi Kaye Grace

Location - East Parler

This presentation will discuss how parents can overcome the initial denial stage and support their child's transition to adulthood with disabilities. It will focus on the importance of early intervention and acceptance, the value of supportive relationships, and strategies to make the transition to adulthood easier. Early intervention is key to helping the child learn how to manage their disability, while acceptance helps parents to move past their denial and focus on the child's abilities and strengths.

WEDNESDAY SCHEDULE CONTINUED

10:00AM - 11:30AM

Expert Panel

Location: Music Hall

Each panel participant will speak on how their agency is working to advance Employment First for Texans with Disabilities.

April Pollreisz

Statewide Independent Living Council (SILC): A nonprofit that supports people with disabilities to live independently and advocate for their rights. SILC works with Centers for Independent Living to provide information, referral, peer support, advocacy, and independent living skills training.

Carrie Bruns

Texas Health & Human Services (HHS): A state agency that provides health and human services to Texans, including people with disabilities. HHS is committed to ensuring people with disabilities have access to meaningful employment services in the community.

Lucy Gafford

University of North Texas-Workplace Inclusion and Sustainable Employment (UNT WISE): A research and training center at UNT that helps improve employment outcomes for people with disabilities. UNT WISE works with employers, service providers, state agencies, and individuals with disabilities.

Marc Hoskins

Disability Rights Texas (DRTx): A nonprofit that protects and advances the legal rights of people with disabilities in Texas. DRTx educates and advocates on issues such as discrimination, abuse, neglect, accessibility, education, health care, and voting.

Ashley Ford

The ARC of Texas: A nonprofit that advocates for the rights and inclusion of people with IDD. The ARC of Texas provides information, referral, education, public policy advocacy, and support to individuals with IDD and their families.

Ron Lucy

Governors Committee on People with Disabilities (GCPD): A state agency that advises the governor and the legislature on issues affecting people with disabilities in Texas. GCPD promotes compliance with disability laws, monitors legislation, conducts research, provides public education, and recognizes achievements by people with disabilities.

Jamie Haywood

Texas Workforce Commission - Vocational Rehabilitation Services (TWC-VRS): A state agency that helps people with disabilities prepare for, find, and keep jobs. TWC/VR provides services such as counseling, training, education, assistive technology, job placement, and supported employment.

Brit Miles

Texas Association of People Supporting Employment First (TX APSE): A nonprofit membership organization comprised of self-advocates and their families, supported employment professionals, employers, state and university employees, educators, and Texans who believe in Employment First.

11:30AM - 12:00PM

Visit The Vendor Hall for a wrap-up and prize drawings.

12:00PM - 1:00PM:

Round Table Luncheon

Location: Music Hall

During this round table discussion and luncheon, the panel experts will host tables to provide a more in-depth conversation about their organization's services and their work to advance Employment First for all individuals in Texas.

THANK YOU!

GENERAL INFORMATION

Hotel Information

Grand Galvez

2024 Seawall Blvd.
Galveston, Texas 77550
Check-in time is 4 PM
Check-out time is 11 AM

Hotel Parking:

Valet-only. Parking is \$25.00/day.

Attire

Attire is “business casual” for all meetings and events.

Badge Identification

Badges are required to enter all meeting rooms, meal functions, and the Exhibit Hall.

Concurrent Session Admittance

All sessions are open to conference attendees on a first-come/first-serve basis. As soon as all chairs are occupied, the room monitor will close the session. Fire codes prohibit the attendees from standing in the aisles or against the walls. We appreciate your cooperation. Your paragraph text.

Continuing Education Units

CEUs are available for designated sessions at the conference at no charge. CEU's will be distributed at the end of the conference. Your completed CEU form will need to be signed by **Lucy Gafford**.

Lucy Gafford, M.S., CRC, CESP
Director - UNT WISE
Email: lucy.gafford@unt.edu

*CEU details and instructions will be announced at the conference.

Convention Evaluation Forms

Be sure to complete the overall convention evaluation form and return it to the registration desk or complete the online form using the QR code.

Places to Eat - Check each location's hours; they vary by season and may be shorter in the fall.

Millers on The Seawall
Fish Tales
The Mexican Cafe
Mosquito Cafe
Sunflower Cafe
Willie G's
Saltgrass Steakhouse
Landry's Seafood
Rainforest Cafe



CONFERENCE EVALUATION

Please complete this paper copy or the online version of the conference Evaluation. Your feedback is important to us as begin to plan for our 2nd annual Conference!

Do you think the conference helped you better understand the Employment First Movement in Texas? Yes or No

Please rate the following questions on a scale of 1 to 5.

1 = Not Very Good ----- 5 = Excellent.

Please rate the keynote session with Dr. Temple Grandin. _____

Any feedback on this session:

Please rate the keynote session with Dr. Williams. _____

Any feedback on this session:

Please rate the Expert Panel Presentation. _____

Any feedback on this session:

Please rate the Awards Luncheon. _____

Please rate the Vendor room, experience, and selection. _____

Please rate the meals provided. _____

Please rate the materials provided. _____

Please provide us with any "ah ha" moments you had during the conference:

Please provide any additional thoughts to the TX APSE conference planning committee such as future locations for a conference, potential speakers, suggested topics, logistical suggestions, etc. _____

PLEASE TURN IN YOUR FORM AT THE REGISTRATION DESK