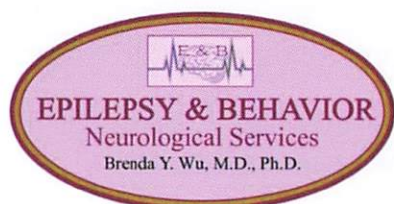




Brenda Y. Wu, MD, PhD

吴温青医生是神经内科专科医生，具有临床神经生理和癫痫专科特考证书，曾在美国耶鲁大学医学院以及佛罗里达大学脑科医院接受癫痫和脑电检测的临床院士培训，拥有药理学与神经科学博士学位。曾在罗格斯大学罗伯特强森医学院神经内科系任教 9 年，并担任癫痫专科主任医师。在诊治癫痫以及神经精神症状方面积累了丰富的临床经验。



**219 Livingston Ave., Unit A
New Brunswick, New Jersey 08901**

电话: **(732) 258-0061**

传真: (732) 993-9497

Email: Office@epilepsybehavior.org

诊所背面有免费停车场



脑医学诊所



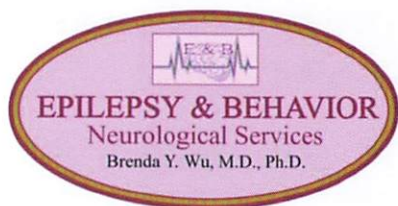
诊疗项目:

- 诊治各种疑难癫痫病症及阵发性神志障碍，根据病人的特质和生活环境制定个体化治疗方案以期达到最佳生活状态；
- 心理异常诱发的非癫痫阵发性不自主抽搐；
- 多种大脑功能紊乱症状：头痛，失眠，记忆力衰退，注意力不集中，多动症，幻觉、妄想症等
- 新冠 COVID-19 感染后症状：脑雾、头晕等
- 语言：英语、中文(国语、粤语)



Brenda Y. Wu, MD, PhD

Dr. Wu is a neurologist with fellowship-trained in clinical neurophysiology and epilepsy at Yale University and University of Florida. She received neurology residency training at Albany Medical College, where she obtained her Ph.D. in Pharmacology & Neurosciences. She previously served as the director of epilepsy program at Robert Wood Johnson University Hospital in New Brunswick for 8 years. Since starting practice in 2003, she has built up substantial experiences in diagnosis and treating patients with seizure disorders.



219 Livingston Ave., Unit A
New Brunswick, New Jersey 08901

Phone: **(732) 258-0061**

Fax: (732) 993-9497

Email: Office@epilepsybehavior.org

Free Parking in the back



Epilepsy & Behavior Neurological Services



Clinical Services:

- New onset or intractable seizure disorder (epilepsy) and well-being care;
- Optimization of individualized antiepileptic regimen to achieve the best quality of life;
- Evaluation and management of non-epileptic psychogenic seizures;
- Neurotic symptoms (headaches, anxiety, insomnia, memory impairment, behavioral changes etc.) with neurological disorders;
- ADHD/ADD; Post-COVID-19 "brain fog"
- Language: English, Spanish, Chinese (Mandarin & Cantonese)