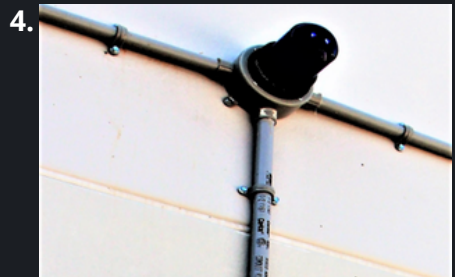


RM PRODUCTS LTD.

ELECTRICAL, LIGHTING & MOUNTING

1. All electric wiring and components are surfaced mounted.
2. All fixtures can be supplied in;
 - a. Explosion Proof
 - b. Non Explosion Proof
 - c. Non-Corrosive
3. Specification sheets will be supplied for approval, positioning of equipment will be directed by customer.
4. Regular electric items supplied; Panel boxes with breakers as required.
5. Lights;
 - a. Incandescent
 - b. Fluorescent Vapor Light
 - c. Emergency Lighting
 - d. Exterior Photo Cell
6. Standard fan has aluminum blades and is wall mounted, size 8" to 36" single or variable speed with or without reverse thermostats. All fans will have a bird screen and hood.



RM
PRODUCTS LTD.

CONTACT US!
1-800-363-0867
sales@rmfiberglass.com
www.rmfiberglass.com

RM PRODUCTS LTD.

ELECTRICAL, LIGHTING & MOUNTING

It is very simple to install additional mechanical components to the interior of RM's fiberglass structures. The internal structural flanges provide a convenient place to fasten or mount electrical boxes or cable clips for wiring.

Holes can easily be cut to mount through wall equipment such as exhaust fans and a/c units.

Panels can be re-enforced to hold the weight of larger HVAC systems that may be required.

Cable clips and conduits can be mounted to the interior surface of the insulated panels as well as the interior flanges of the parts.

7.



8.



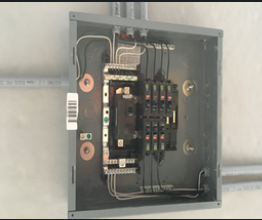
9.



10.



11.



12.



13.



14.



15.



RM
PRODUCTS LTD.

CONTACT US!

1-800-363-0867

sales@rmfiberglass.com

www.rmfiberglass.com

RM PRODUCTS LTD.

ELECTRICAL, LIGHTING & MOUNTING

16.



17.



18.



RM
PRODUCTS LTD.

CONTACT US!
1-800-363-0867
sales@rmfiberglass.com
www.rmfiberglass.com

RM PRODUCTS LTD.

ELECTRICAL, LIGHTING & MOUNTING

19.



20.



21.



22.



RM
PRODUCTS LTD.

CONTACT US!
1-800-363-0867
sales@rmfiberglass.com
www.rmfiberglass.com