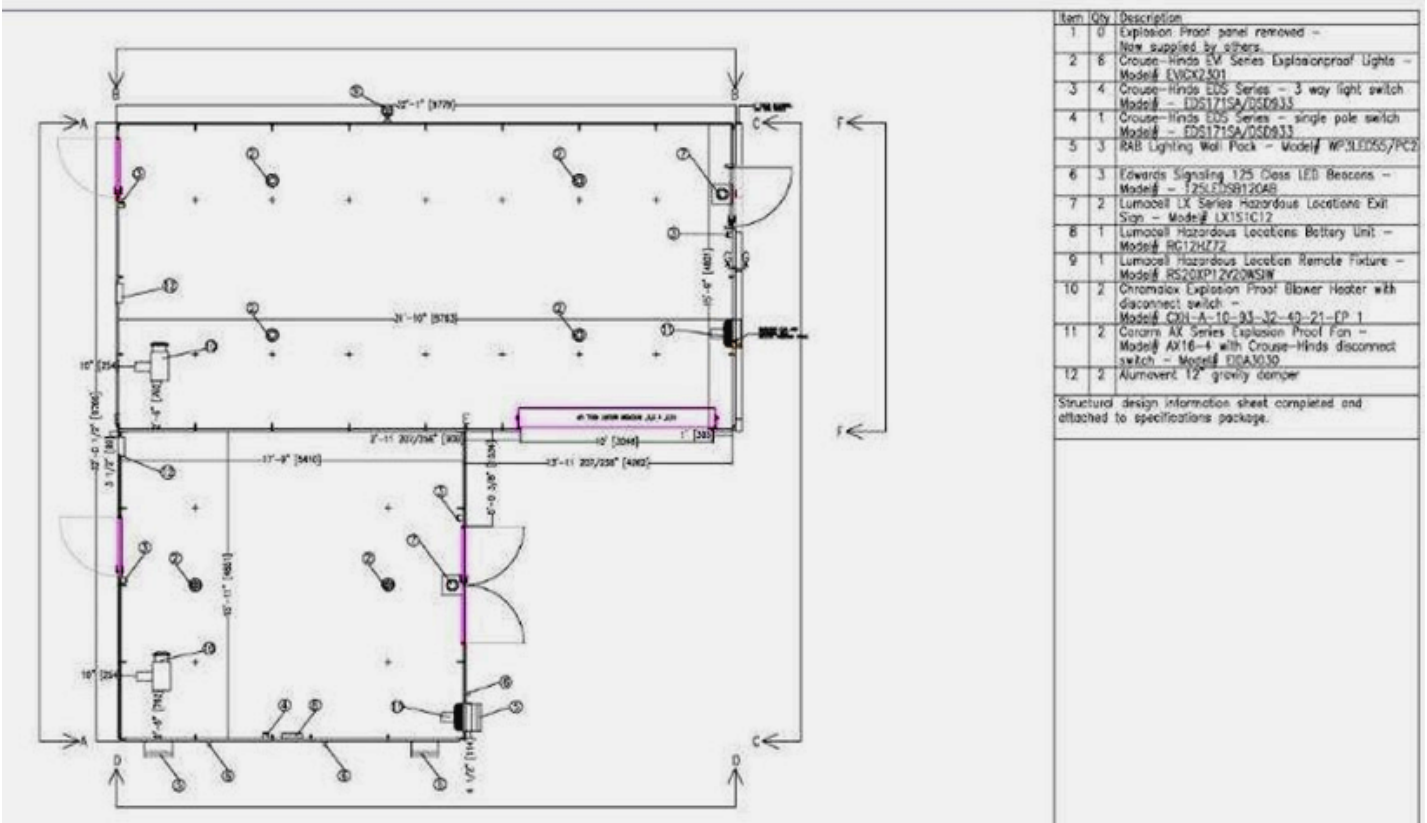


RM Products Ltd.

Hauled Wastewater Receiving Facility

RM Products works with the engineering company to design the configuration of the structure and provide all drawings of the building. We also provide all specifications for the tenders including specifications for lighting, heating and fans etc...

Below are drawings and highlights showing how easy it is to work with RM Products Ltd. and our fiberglass products.



RM Products Ltd.

Hauled Wastewater Receiving Facility

RM buildings can be shipped assembled but for larger building that cannot be shipped pre-assembled, the parts are shipped in a closed trailer and can be removed easily by hand due to the light weight of the components. One truck load of components can hold up to 2400 cubic feet. For the base, fiberglass angle is anchored to the concrete pad, sections are then bolted together. Each section consists of two side panels and a roof section.



RM Products Ltd.

Hauled Wastewater Receiving Facility

Sections are easily lifted by an extendable forklift or crane.



RM Products Ltd.

Hauled Wastewater Receiving Facility

Building Standing In Six Hours



Building was ready for electricians in three days all Class 1 Div 1 explosion proof fixtures also supplied by RM Products Ltd.



All entry doors are fiberglass, the roll up door has non-corrosive features. All hardware is stainless.



Features & Benefits:

Modular Design - Portable - Quick Assembly Time - Easy Shipping and Off Loading - Minimal Site Preparation
Mold & Mildew Resistant - Long Term Durability - Insulated Buildings - Virtually Maintenance Free - Light Weight - High Strength to Weight Ratio - Easy to Repair - Spray Washable Inside & Out - Ability to Assemble in Difficult Locations Where Construction is Constrained - Electrics, Lighting and HVAC Options Are Available Meets Building Codes Throughout North America