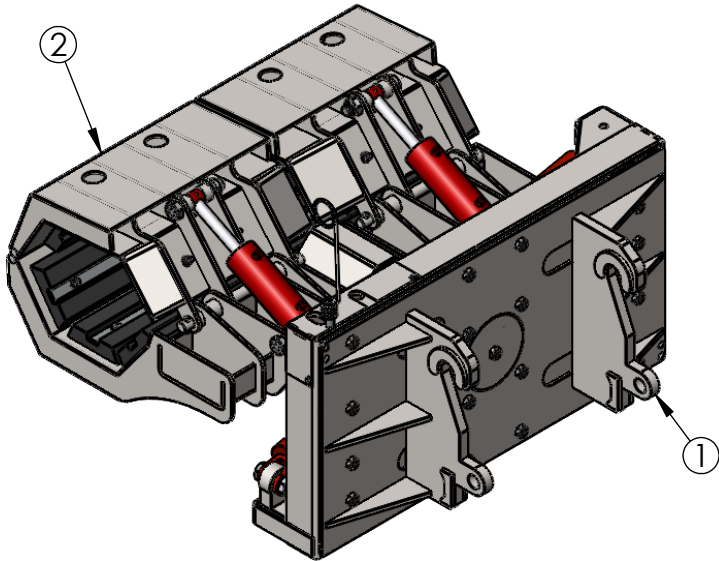
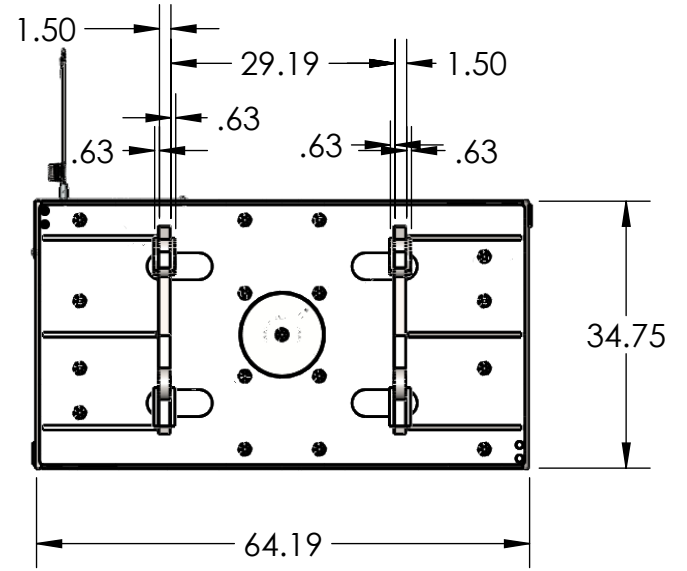
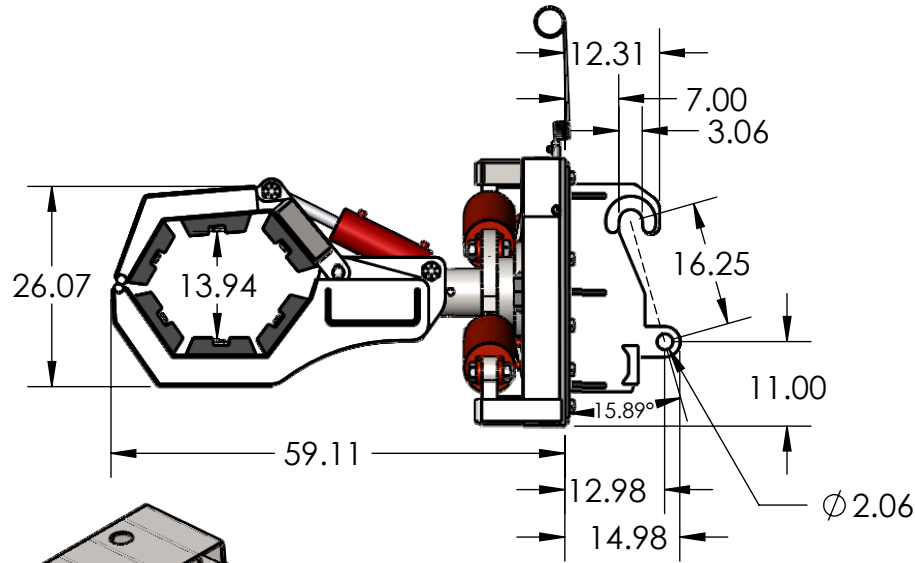


REVISIONS			
REV.	DESCRIPTION	DATE	APPROVED
A	ADDED MORE DIMENSIONS	2/23/2021	BEVAN
B	REMOVED MATERIAL FROM MOUNT TO MAKE LIGHTER	2/25/2021	BEVAN

ITEM NO.	PART NUMBER	DESCRIPTION	QTY.
1	CAS-01-0067	CASE 721G MOUNT ON EXTREME POLE SETTER BOLT ON PLATE	1
2	HD-02-006	POLE CLAW WELDMENT	1



UNLESS OTHERWISE SPECIFIED:		NAME	DATE
DIMENSIONS ARE IN INCHES		DRAWN	BEVAN 8/10/2018
TOLERANCES:		CHECKED	
FRACTIONAL ±		ENG APPR.	
ANGULAR: MACH ± BEND ±		MFG APPR.	
TWO PLACE DECIMAL ±		Q.A.	
THREE PLACE DECIMAL ±		COMMENTS:	
INTERPRET GEOMETRIC TOLERANCING PER:			
MATERIAL			
FINISH			
NEXT ASSY	USED ON		
APPLICATION			
DO NOT SCALE DRAWING			

EZ-SPOT-UR

TITLE:
CASE 721G MOUNT WITH THE EXTREME POLE SETTER

SIZE A	DWG. NO. CAS-01-0068-A - 721G MOUNT WITH EXTREME POLE SETTER	REV B
------------------	---	-----------------

SCALE: 1:25 WEIGHT: 3713.50 LBS SHEET 1 OF 1

PROPRIETARY AND CONFIDENTIAL

THE INFORMATION CONTAINED IN THIS DRAWING IS THE SOLE PROPERTY OF EZ-SPOT-UR. ANY REPRODUCTION IN PART OR AS A WHOLE WITHOUT THE WRITTEN PERMISSION OF EZ-SPOT-UR IS PROHIBITED.