

# Who's Who 1990

*Who's Who Outlook Jan 27, 1990*

## Flowers by Malcoms, Ltd.

202 N.E. 2nd Ave., Gresham • 665-9101

Flowers by Malcoms, Ltd., has been conveniently located in downtown Gresham since 1953. Everyday we make deliveries to Gresham, Damascus, Boring, Troutdale, and other areas of East Multnomah County and metropolitan Portland.

We also offer worldwide deliveries thorough the Florist Transworld Delivery Association.

We always have an excellent selection of exotic fresh flowers, silk flowers, traditional fresh flowers, along with a complete line of giftware from ceramics to balloons and stuffed animals.

Our 37 years of experience in the area have established us as the premier florist for your gift and special occasion needs. Call us at 665-9101. We can help you decide on just the right type of flower, arrangement, or gift for the particular event you want to honor.



*Who's Who Outlook Jan 27, 1990*

## MacKenzie Grill

2370 East Burnside, Gresham • 666-2624

MacKenzie Grill, Gresham's newest family restaurant, officially opened Jan. 24. And according to Butch Wilson, one of the owners, this is just the beginning of a company that plans to go national.

The fabulous food bar offers an extravaganza of delights, from fresh salads, casseroles, and vegetables, to finger foods and fresh, in-house baked muffins, breads, and cinnamon rolls.

Besides specialty salads and sandwiches, a wide range of mouth-watering beef, pork, chicken, and seafood dinners are on the menu. The food bar is included with the dinner.

Open seven days a week, wine, beer, liquor, and other beverages are available in the lounge.

The newly re-decorated restaurant is so cozy, you won't want to leave. Stop by and let us make you feel as welcomed as the people of Gresham have made us feel.



*Who's Who Outlook Jan 27, 1990*

## Dan Anderson Karate

311 N.E. Roberts (next to PGE), Gresham • 665-8596

Dan Anderson Karate School offers something for everyone ages 5 to 65. Whether it is self defense, fitness, stress release, competition, or an activity the whole family can enjoy.

All instruction is by 5th degree Black Belt and former national champion and AAU member Dan Anderson and his wife, Lynn, herself a national silver medalist and four time state champion.

Dan has been in the martial arts for over 23 years and Lynn for 10 years. Their experience shows in the quality of students produced. At a recent open tournament 23 of their students won or placed even though several divisions had in excess of 75 competitors.

"Self confidence, quality instruction, fitness and just plain fun are the main reasons students say they train with us. We take personal care of all of our students. We're like a big family." A very big family! In 5 years the school has grown to 150 students and has expanded to a facility with 2800 sq. ft. of space plus heavy bags and free weights.

Come in and try one FREE WEEK of classes. "Train with the Best and be the Best!"







*Who's Who Outlook, Jan 27, 1990*

## Nostalgia Antiques & Collectibles Mall

19 N.E. Roberts, Gresham • 661-0123

Nostalgia is a family operated mall with three floors of antiques and collectibles. We buy, sell, and accept consignments seven days a week.

Rather than having a garage sale, people bring their antiques, collectibles, or other personal treasures to us to sell for them. We also have dealer spaces for lease. We currently have 30 individual antique dealers within our mall.

Nostalgia has the largest selection of Coca-Cola collectibles in the Northwest. We also carry collectors' books and price guides.

We always are looking for the odd and unusual and offer a 60-day layaway for our customers' convenience. We also feature a customer want list — tell us what you are looking for and we'll keep you on file until we locate that special item.

If you've never collected anything, let us show you how much fun it can be. Owners Terry and Lodi Smoke would love to take you on a tour of the mall.

*Who's Who Outlook Jan 27, 1990*

## Stones

40 N.E. Second St., Downtown Gresham • 665-2015

Ask anyone who has shopped at Stones in Gresham and they'll tell you no store will compare with their combination of quality, selection and value.

With over 40 years of retailing experience, Gordon Stone knows that consistent service and a commitment to quality will prevail in an industry wrought with hype and flash.

Owned and operated by the Stone family, founder Gordon Stone is on the sales floor daily with sons Martin and Randy, and long-time women's shoe and apparel manager Kristy Coombs making sure that customers are serviced with knowledgeable and courteous salespeople.

And what a selection. Women's shoes from famous makers like Rockport, Zodiac, New Balance and Clark's of England, Bandolino, Naturalizer, Easy Spirit, Old Maine Trotter and more. Stones has a complete assortment of shoes for men from Rockport, Allen Edmonds, Florsheim, Zodiac and Clark's of England.

Stones also boasts the city's largest selection of fully constructed suits and sport coats. Even hard to fit men can find comfortable and stylish business and formal wear. For weekend outings, they have a wide variety of active wear. And don't forget to check out Stones women's career clothing and accessories.

Just when you thought the only place to shop was the mall, take a break and treat yourself to the service and selection of Stones.



*Who's Who Outlook, Jan 27, 1990*

## Walrad Insurance Agency LTD.

105 N.E. Roberts, Gresham • 667-4171

Serving all the insurance needs of homeowners & business owners for 60 years. Walrad is the largest & oldest insurance agency in East Multnomah County with a dedicated, experienced staff that has the expertise to solve any insurance problem.





*who's who - Out look - Jan 27, 1990*

## Moen Machinery Company

268 N.E. Hogan, Gresham • 668-9159

For 43 years Gresham residents have depended on Moen Machinery for their power equipment needs. Founded in 1947 by George Moen, the firm provides its customers with a wide selection of the number one tractor and power equipment available. They back their products with knowledgeable personnel in parts, service, and sales departments.

Today, Howard and Colleen Moen, his son Greg and daughter Cindy continue the tradition established by George.

Moen offers a full-line of Kubota tractor and lawn equipment; Honda power products and lawn garden equipment; Stihl chainsaws and brush cutters; Kioti tractors; and Bolen lawn and garden tractors.

When you deal with Moen Machinery, you can be assured of always receiving quality service and products at a fair and honest price.



*who's who - Out look - Jan 27, 1990*

## Pacific Crest Clothing Co.

130 Main Street, Gresham, OR • 665-2701

Sunriver Village Mall, Sunriver, OR • 593-6404

Pacific Crest Clothing Co. is a store that salutes the unique spirit of Northwest living and offers clothes ready to meet the demands of daily life.

Owners Bob and Jim Bergeron have designed Pacific Crest's inventory to be versatile and adaptable. From the ski slope to a casual evening's dining, they have the styles that will keep you looking sharp for years. The two brands that seem to fit the needs of Oregon families best are Patagonia and Pendleton. The full Patagonia line is available for men and women year round. And Pacific Crest features Pendleton's incomparable blankets and clothing.

Pacific Crest also stocks Ruff Hewn, Dooney & Bourke, and many more brands that offer the best combination of quality and value.

In May of 1989, the brothers opened a second Pacific Crest in the Sunriver Village at Sunriver. With that addition to their location in historic Downtown Gresham, you can find the quality clothes your family deserves near two of Oregon's finest playgrounds.



*who's who  
Out look  
Jan 27, 1990*

## Real Estate Marketing Concepts

265 N.E. 2nd Ave., Gresham • 666-1100

Quality service you can count on: Real Estate Marketing Concepts is committed to selling your property in the most efficient, timely manner possible. That commitment is backed with a written service guarantee for all properties listed with us.

We believe quality service begins with qualified agents. Each of our carefully selected agents receives continual training through weekly sales meetings and regular seminars. At Real Estate Marketing Concepts, you always will be assured of having an agent who is knowledgeable of the area, market conditions and financing.

For the buyer we offer: complete listings of available residential and commercial properties through our "SEARCH & MATCH" computer program. You'll have the first opportunity on choice properties before they are available to the general public.

Cecil Shuler and Terry Fitch, who have more than 40 years of experience, felt there was a more efficient way to operate a realty. They put their plans into action and in only two years have a staff of 40 associates eager to serve you.







*who's who Jan 27, 1990, Outlook*  
**Main Street Restaurant  
 and Bakery**

**112 N. Main Street, Gresham • 661-7877**

Main Street Restaurant and Bakery celebrates the 90's with freshly prepared, nutritious and lighter fare. Serving breakfast and lunch daily, and dinner Thursday, Friday and Saturday evenings. Try our new American Heart specials at dinner, our apple muesli for breakfast or our house French onion soup prepared daily. Desserts, pastries and bread are made fresh daily by our bakers. Espresso drinks to go or pause and enjoy our new espresso counter open daily.



*who's who Outlook Jan 27, 1990*  
**Miles Jewelers**

**35 East Powell Blvd., Gresham • 666-2333**

A fixture of the Gresham downtown scene for 17 years, Miles Jewelers is a retail business that features a complete line of fine jewelry, from diamonds to gem stones.

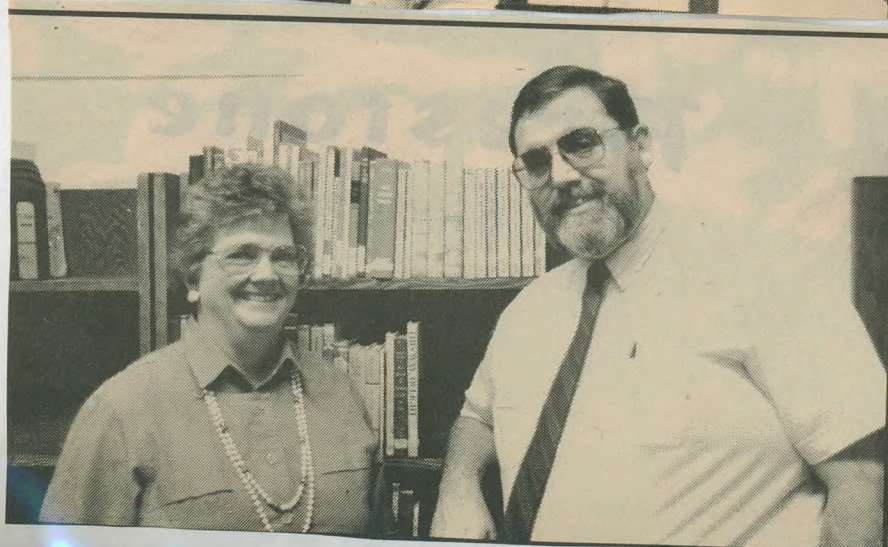
Besides selling a broad range of quality watches, owner Miles Heagy personally does the repairs — from routine watch repairs to bead stringing and delicate gem stone remounts.

Opal Worthington, who has been his "right-hand man" for the past 15 years, says the store handles 90 percent of the repairs right at their Gresham location.

She says she takes special pride in searching out and finding special orders for customers.

Although pearls have been making a resurgence the past 10 years, Opal says first lady Barbara Bush's emphasis on the oceanic jewel has boosted sales. "We sold more pearls this Christmas than ever before."

The store is open Tuesday through Friday from 9 a.m. to 5:30 p.m. and from 9 a.m. to 5 p.m. on Saturdays. Drop in and let Miles or Opal introduce you to their delightful world of special treasures.



*who's who Outlook Jan 27, 1990*  
**Mount Hood  
 Christian School**

**3445 S.E. Hillyard Road, Gresham • 666-6016**

Mount Hood Christian School is structured to teach young people how to succeed in a complex world of change.

**INTELLECTUALLY...MHCS** strives for the full development of each student, drawing from resources both within and without the school.

**SPIRITUALLY...MHCS** provides an education that is distinctively Christian and interdenominational. We foster a caring atmosphere where laughter, diligence, kindness, honesty, and excitement thrive.

**PHYSICALLY...MHCS** believes in the value of physical development and provides a physical education program for all age levels.

**SOCIALLY...MHCS** cultivates positive, personal interaction between students and staff with a variety of opportunities.

**MHCS** is a fully accredited school offering Christian education for preschool through 12th grade. Our program encourages balanced growth in all areas of life. MHCS seeks to develop the mind, body, and soul — to equip the student with the basics in today's world.





*Who's Who Outlook Jan 27, 1990*  
**Cascade Athletic Clubs**

**192nd & Division, Gresham • 665-4142**  
**92nd & Stark, Portland • 257-4142**

The future is fitness and we're leading the way! Our goal is to make fitness for life fun and rewarding. We do this through friendly, knowledgeable staff, clean facilities, state of the art equipment, sports, lessons and social activities for every interest.

Our facilities include complete weight training floors, free aerobic classes, two 75' pools, an outdoor pool, co-ed and men's & women's whirlpools, steam rooms, saunas and tracks, 2 gymnasiums, karate, ballet and lessons in all areas.

Special programs for kids and seniors are available. Our Gresham location is completely renovated and expanded - 10,000 square feet to offer you more! In fact one of our new pools will be heated to a warm 88°. Come in for a free tour . . . we can help you enjoy Friends, Fun & Fitness.



*Who's Who Outlook Jan 27, 1990*

**CYNTHIA'S**  
**Sewing Machine & Learning Center**

**2033 East Burnside, Gresham • 661-2102**

Cynthia's Sewing Machine & Learning Center provides sewing machine, knitting machine and vacuum sales and service.

More than 25 sewing and craft classes are available for both children and adults

Originally located in a room of a Gresham real estate office in November 1979, Cynthia's has moved to larger facilities four times in the past 10 years. In 1988, Cynthia's sons, Bill and Jeff, became part owners.

Last fall, Cynthia's Sewing Center was one of the top five New Home sewing machine dealers in the Northwest region. She attributes this growth to the emphasis she places on customer service and a strong New Home and Elna product line, and a professional, top-quality staff.

Cynthia's operating hours are 9:30 a.m. to 6 p.m. Mondays through Fridays and Saturdays from 9:30 a.m. to 5 p.m. Evenings are available by appointment.

*Who's Who Outlook Jan 27, 1990*  
**Clackamas County Bank**

**2482 East Burnside**

**Gresham Village Shopping Center, Gresham • 665-9444**

Although we've only been open for one year, Clackamas County Bank — located in the Gresham Village Shopping Center — has already established itself as the bank to go to for friendly, efficient banking services.

We've replaced Clackamas County Bank's Gresham Loan Center, which had served local customers since 1987.

At it's Sandy headquarters, Clackamas County Bank, a member of the FDIC, has served the community since 1911, and we have branch offices conveniently located for people who live in the communities of Boring and Welches.

Give us a try — you'll be pleased with our friendly tellers and loan officers who can help you with our wide range of banking and savings services.





# Burns Bros. Truck Stop

Exit 17 off of I-84, Troutdale • 661-0575

Burns Bros. truck stop opened its doors May of 1988 and is still being touted as "the ultimate stopping place for weary travelers." A look around and a peak inside reveals why:

The \$5.2 million facility features a remodeled motel, a deli, a convenience store, a restaurant, a bar, private bathrooms and shower stalls, a lounge with a big screen TV, gasoline fuel banks, a repair shop, a game room, laundry facilities, and a barber shop.

It's the kind of one-stop resting place Jack Burns, chairman of the board of Burns Bros. Inc. can be proud of, along with many local employees who have gained new employment.

Live country bands perform nightly in the lounge, and on Wednesdays & Thursdays, country dance lessons are offered. The restaurant features an all-you-can-eat daily buffet, complete with salad bar and homemade soups.

The Troutdale truck stop is the first of its kind, and has been described as the most modern one found anywhere in the United States! It's a place where customer service is tops. Stop in at the new location just off Interstate 84 (Troutdale exit) and find out why.



*who's who - Outlook, Jan 27, 1990*

## Gresham Rent-A-Car, Inc. U-Save Auto Rental®

720 N.E. Hogan, Gresham • 667-8284

Have you ever temporarily needed another automobile? Perhaps your car is too small, being repaired or family members need to be two places at once. Whatever the reason, you need a clean, dependable vehicle for a reasonable price.

Gresham Rent-A-Car, Inc. was founded to satisfy the needs of East County residents for rental cars at affordable daily, weekly or monthly rates.

Our fleet consists mainly of late model 4-door sedans with automatic transmissions, air conditioning, power steering, power brakes and AM/FM stereos. We have specialty vehicles such as compacts with manual transmissions, station wagons and a four-wheel drive sedan equipped for all weather driving.

We broker all types of new cars and sell special interest high quality used cars on consignment basis.

Please see us for all of your auto rental needs.

PURINA  
CHOWS

## BURNS' FEED STORE



*who's who - Outlook, Jan 27, 1990*

## Burns Feed Store

29215 S.E. Orient Drive, Gresham • 663-3246

Since 1950, local farmers have counted on Burns Feed Store to provide them with most everything they need - feed, hay, small farm animals, and, of course, a friendly word or two. Ike Burns founded Burns Feed Store over 40 years ago, and today his son Rawley owns and operates the business.

In addition to servicing many of the same farmers Ike did years ago, Rawley has added a large selection of supplies for the backyard farmer, chemicals and fertilizers for the crop producers in the area, and well-stocked tack room for the surrounding horse enthusiasts.

About the only part of Burns Feed Store that hasn't changed is the commitment to offering personal, friendly service.





*who's who  
Outlook  
Jan 27, 1999*

## Fred McNalley RV Super Store

195th and Division, Gresham • 661-1600

In business for the past 31 years, Fred McNalley's RV Super Store is the largest recreational vehicle servicing dealer in the nation.

His 180 employees from the local area are experienced and hard working.

In 1982, Fred McNalley's RV Super Store was voted dealer of the year by the general public through Trailer Life magazine and satisfied customers.

With more than 22 different brands to choose from, we have the largest selection of recreational vehicles, and RV supplies on the West Coast.



*who's who  
Outlook  
Jan 27, 1990*

## Gresham Area Chamber of Commerce

150 West Powell/P.O. Box 1768, Gresham • 665-1131

Meet the Gresham Area Chamber of Commerce Ambassadors. This group of dedicated community host and hostesses are ready to help with ground breakings, grand openings and special business occasions.

They are the representatives of the community with a welcome hand to help your business do business in the Gresham area.

We invite you to join the Ambassadors or contact us if you want their special kind of help with your upcoming event.



*who's who - Outlook, Jan 27, 1990*

## Gibson Bowles Inc., Realtors® Better Homes and Gardens® Mary Martin

1250 N.E. Burnside, Gresham • 667-1465, 667-0220

Mary Martin was recently recognized as "Salesperson of the Year" at the Gresham office of Gibson-Bowles, Inc., Realtors/Better Homes and Gardens.

Mary attributes her success to her philosophy that honesty is not just the best policy, but her way of life.

Active in the East County League of Women Voters, the Crime Prevention Council, and the Gresham Board of Realtors, Mary lives in Gresham with her husband Jim and their daughter Tracy.





*Who's Who  
Outlook  
Jan 27, 1990*

## Magic Mill

**Division & Main, Gresham • 666-7188**

Magic Mill, begun as a family business in 1973 by Allen and Jeannine Burt, was the world's first Magic Mill Center. Now there are 100 centers in the United States and Canada.

We are distributors for Magic Mill Products, headquartered in Salt Lake City. The Magic Mill (a home wheat grinder), and the Bosch Kitchen Machine (a bread maker and all-purpose food processor) are our main products.

We also feature dehydrators, stainless steel cookware, grinding wheat "auto bakery", apple cider mills, juicers, and many other related products. We sell both wholesale and retail.

We give wheat grinding and bread making demonstrations daily without appointment. We try to give everyone a free loaf of bread when they come in and watch a demonstration.

Our free whole wheat baking classes are on Tuesday evenings from 7 p.m. to 9 p.m.. Please register by phone or by dropping in during the day to make sure there's a class.



## Kight Photography

**1410 E. Powell, Gresham • 667-0937**

Jim and Nina Kight, owners of Kight Photography have designed a unique indoor/outdoor portrait studio in Gresham.

When they purchased the property in 1980 the studio was on a large, unkept lot. Now their 1/4 acre park features unique settings such as a gazebo, a pond with a pier, a rustic barn with an authentic wagon, a swing, arbors, and much more, all surrounded by hundreds of flowers and trees.

In 1985, Kight Photography was awarded Gresham's Best Community Design Award for remodeling. Every year since, they have been awarded the Continuing Excellence Award for landscape and maintenance.

Kight Photography adds the feeling of adventure and excitement when you are photographed in these beautiful surroundings.

For the next photograph of your family, high school senior, children, pet, or wedding . . . include adventure and excitement by calling **667-0937**.



*Who's Who. Jan 27, 1990*

## Gresham Paint and Decor

**1455 E. Burnside, Gresham • 667-3648**

Quality, services and the best available products on the market today keep Gresham Paint and Decor a cut above the rest.

Dave McMillan, owner and manager of Gresham Paint and Decor, takes pride in servicing his customers. "Service is the key to this business. Without good service and reliable products, you might as well close up shop. Dave has been in the home improvement business since the early 1960's. His experience in this area has given him the knowledge to pick and choose his products carefully. He's narrowed down the huge variety of products and carries only the best . . . Benjamin Moore paints. Purdy brushes, Custom-Built products. Levelor blinds, products by Window Coverings and more. All this quality product and service is managed by Jeff Corcoran who brings an abundance of commercial painting expertise to the store.

For the finishing touches on, from 'start to finish' Gresham Paint and Decor offers the design concept, coordination services of Di Ann Garner. A service that cuts through the stress and confusion of home improvement giving customers exactly what was planned in a very organized manner.

So, when it comes to adding a little flair to your home, developing your decorating and improvement needs beyond your wildest dreams, visit Gresham Paint and Decor, we have the product, the creativity, energy and the service you need.





*Who's Who - Outlook Jan 27, 1990*

## Cloudtree & Sun

112 N. Main Street, Gresham • 666-8495

Cloudtree & Sun - where shopping is fun year round. Visit our new cookware department and watch exciting seasonal displays focusing on the latest decorating trends - the American West, French Impressions and English country garden. We're expanding our dinnerware selection and our bridal gift registry departments for the 90's. Customer services include complimentary gift wrap for purchases, UPS shipping, special orders for "hard to find" specialties and bridal registry. Open seven days a week.

*Who's Who - Outlook Jan 27, 1990*

## Stan Wiley, Inc., Realtors

1105 N.E. Burnside, Gresham • 666-9566 •

The Stan Wiley Company was founded in 1955 by Stan & Dorothy Wiley and is a full service real estate company with offices throughout the Portland Metro area.

The Gresham office is noted for their enthusiasm and community spirit and are here to provide the most professional service available with a commitment to excellence.

CALL US FOR ALL YOUR REAL ESTATE NEEDS



## STARK'S VACUUM cleaners



*Who's Who - Outlook Jan 27, 1990*

## Stark's Vacuum Cleaner Sales and Service

240 N.W. Division, Gresham • 661-0128

Clarence Stark founded Stark's Vacuum Cleaner Sales and Service in 1932 here in Portland, Oregon. Mr. Stark always believed in offering his customers the lowest prices combined with the best service and largest selection. With five stores this family owned and operated business is the Northwest's leading vacuum outlet with thousands of satisfied customers, a true one-stop shop for your floor care needs.

We specialize in vacuums and have done so for over fifty-eight years.

Come in and see just how good we are and bring the kids into our main store in Portland to see our museum with vacuums dating back to the late 1800's.

Shop at Stark's where vacuums cost less and service is best!!!

Portland - Beaverton - Clackamas - GRESHAM - Vancouver





## Yoder Stove Supply

861 E. Powell, Gresham • 661-7676 or 236-6662

Yoder Stove and Supply located in Gresham Plaza is owned and operated by John Yoder of Estacada and his two sons, Glen and Galen.

Since 1976, this family-owned business has been heating the hearths of Oregonians with a wide selection of wood stoves, fireplace inserts, pellet stoves and other accessories. They carry a full supply of pellets and presto logs. The store has a nice selection of new products available and if John doesn't have what you need on hand, he'll find out how to get it for you. In addition, Yoder's offers installation, stainless steel liners, and chimney services to go along with your purchase.

Drop by today and let John and his sons order the information and products you need to warm your home. Yoder's is open Monday through Friday 10 a.m. to 5:30 p.m. and Saturday, 10 a.m. to 4 p.m.

*who's who Outlook Jan 27, 1990*

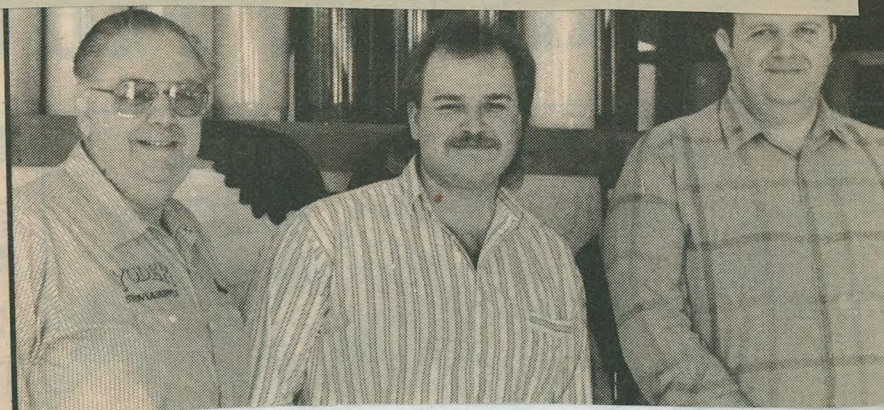
## Amiton Furniture

202 N. Main, Gresham • 665-5095

Since 1941 when Bill Amiton opened his store, the Amiton family has provided Gresham families with home furnishings and accessories.

The store has been in its present location at 2nd and Main since 1958. Inside you'll find two full floors of furnishings. "We try to provide the best value for our customer's dollar," says co-owner Bob Matulef. The store offers a large selection of sofas, Simmons hide-a-beds, Lane, Flexsteel and Stratolounger recliners and Lane cedar chests. In addition, Amiton carries a full line of mattresses by Simmons, Sealy, Spring Air and Englander.

With all this to offer, Amiton Furniture is sure to be an important part of downtown Gresham for years to come.



*who's who Outlook Jan 27, 1990*

## West One Bank

825 N.E. Hogan Road, Gresham • 667-6672

Located Between Division & Burnside

West One Bank, a full-service commercial bank with 130 offices in four states, still offers the kind of friendly, personal service you get in a small, home-town bank, says Nancy Lowe, Branch Service Manager.

Customers say West One Bank covers all their banking needs. They don't have to drive downtown, West One Bank has it all.

Pam Barrett our Personal Banking Officer, Julie Wahlin our New Accounts Rep, and Kim Grahn and Nancy Boyles our Customer Service Reps are eager to serve both long-time and new customers alike.

Both the bank lobby and the convenient drive-up window are open 9:30 a.m. to 5 p.m. weekdays, except for Fridays when they stay open until 6 p.m.





*Outlook, who's who, Jan 27, 1990*  
**Speed's Towing**

**830 N.E. 6th Ave., Gresham • 661-5288**

Jon Hancock is the Gresham area manager for Speed's Towing.

The people at Speed's Towing pride themselves on customer satisfaction and image. That image is one they have carefully cultivated. It is the image of a professional, whose first priority is serving the public in the most efficient, considerate manner possible.

Besides offering the usual range of assistance towing companies are known for, Speed's participates in the "Tow For Life" program during the holidays in cooperation with Mothers Against Drunk Drivers. Since 1983, anyone who has had too much to drink may receive a free tow home. A \$10 donation goes to MADD.

But Speed's also is available for the normal problems motorists face: flat tires, dead batteries, keys locked inside car, and empty gas tanks. Just give Speed's a call at 661-5288 for quick, friendly service.

*Who's who, Outlook, Jan 27, 1990*  
**Rancho Flowers**

**312 N.W. Eastman Parkway, Gresham Town Fair  
 Gresham • 667-7799, 297-8858**

Rancho Flowers is a full-service florist open seven days a week in the East County area — Mondays through Saturdays 9 a.m. to 7 p.m. and Sundays from 11 a.m. to 5 p.m. WE DELIVER, 7 days a week.

We opened in the Gresham Town Fair shopping center two years ago. Look for our advertisement in the People Section of the Gresham Outlook every Wednesday. There is always a new weekly special!

We gladly provide free consultations for weddings and other special occasions. Call Nancy, the manager of our Gresham store, for details.



*who's who, Outlook, Jan 27, 1990*

**School Bus Services, Inc.**

**1625C S.E. Hogan Rd., Gresham • 665-8193**

School Bus Services, Inc. has been part of Gresham since the early '30's, first as the "Blue Buses", providing public transportation to and around Portland. Now our business is exclusively the safe transportation of school children for the Gresham Schools and surrounding districts. And, we have five additional locations in Oregon and Washington.

Our buses, large and small, are also available to such non-school groups as churches, camps, teams or even birthday parties, for a trip across town, or to Mt. Hood, or the coast.

School Bus Services, Inc. is proud of the people who work for us and our service to the Gresham community. The vision of the company, as expressed by owner, Lee Larson, is that "We are More Than Just A Ride".







*who's who, Outlook, Jan 27, 1990*

## Petco Pet Supply Center

1905 N.E. Division, Gresham • 661-8682

A special team of knowledgeable sales people greet customers when they walk in the door of Petco.

Formerly Wellpet, Petco recently merged with the retail chain. The Gresham store has been open since May 1986.

Unlike other pet supply stores, Petco does not sell live animals. Instead, it carries a full line of pet products — from food to flea killers, from toys to treats, from dog houses to cat furniture.

Petco's staff is concerned for the health and well-being of your pets. The well-trained staff has an abundance of pet-related experience to help you with all your pet needs.

There are nine Portland area Petco stores to serve you.

*who's who, Outlook, Jan 27, 1990*

## Sandy's Camera Shop

1222 N.W. Eastman Parkway, Gresham • 665-3456

"Service With A Smile" is the slogan of your local Sandy's Camera Shop. Since 1915, Sandy's Camera Shop has been serving the Portland area. In 1978, Sandy's moved to Gresham to bring the area the latest up-to-date photography supplies and service.

For those of you who need fast, quality photo processing, Sandy's features 50 minute film developing, enlargements, cameras, frames, passport photos, video transfer and photo mugs.

Sandy's Camera Shop is conveniently located at 1222 N.W. Eastman, Gresham and is open for your convenience Mon. - Fri. 9-6 and Sat. 10-5.

Come in soon to receive that "Service with a Smile."



*who's who, Outlook, Jan 27, 1990*

## Gresham Skate World

1220 N.E. Kelly, Gresham • 667-6543

Built in 1974, Gresham Skate World is the area's second-oldest skating rink. There are only three roller skating rinks in the Portland metropolitan area.

Gresham Skate World features the quality and essence of roller skating with the latest in wheels and floors. This is family recreation at its best, in a well-controlled, supervised and managed environment.

Gresham Skate World is open for public skating, or private parties and fund-raisers. Schools and churches enjoy group nights, where Christian music night is Tuesday evenings.

Owned by Mr. Bill Cook and operated and managed by regional general manager Cliff Sheley, roller skating is your best bargain for entertainment in the area. Betty and Don Norlen are manager and assistant manager.



*Who's who. Outlook. Jan 27, 1990*  
**Multnomah Cable Access**

**Mt. Hood Community College Campus  
26000 S.E. Stark, Gresham • 667-7636**

Located on the beautiful campus of Mt. Hood Community College, Multnomah Cable Access is community TV.

Serving East Multnomah County, Multnomah Cable is a non-profit organization set up to program eight channels with a mix of public access, educational, and government programs that can be seen on Paragon Cable.

For no charge, Multnomah Cable Access provides training in television production, the use of production equipment, and channel time for those who wish to produce their own public access programs.

Watch MCA Channel 21 for all your community programs.



*Who's who. Outlook. Jan 27, 1990*  
**Oregon Craft & Floral**  
**2101 N.E. Burnside, Gresham • 661-1469**

New to Gresham in April 1988, is what used to be known as a "mom and pop" craft shop. After adding seven stores in Oregon and 13 in California to the original location on 122nd Street, Oregon Craft and Floral is anything but old-fashioned or outdated.

Even though the business has expanded and might be a little more modern than what it used to be, regard for customer service always has remained constant throughout the years. In an effort to keep up with the times, the business has become more detailed and efficient to meet the high standards and growing volume.

Sonia Hardy manages the Gresham store, which is open from 9 a.m. to 9 p.m. Mondays through Fridays, 9 a.m. to 7 p.m. Saturdays, and 10 a.m. to 6 p.m. Sundays. She and her staff are on hand to offer advice and to help you.



*Who's who. Outlook. Jan 27, 1990*  
**Newport Bay Restaurants**  
**2757 S.E. Burnside, Gresham • 661-2722**

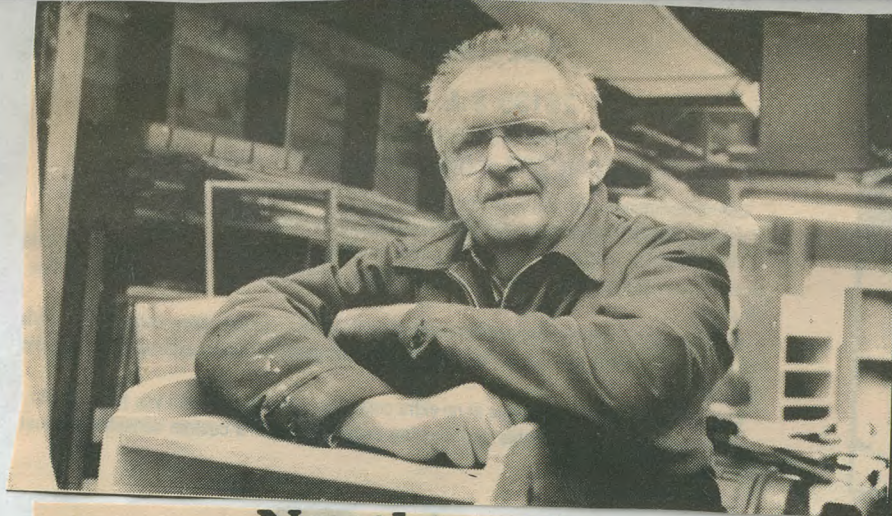
After six months in Gresham, Newport Bay Restaurants has already made a name for itself as a family oriented seafood restaurant with the best food in East County.

Owned by Keith Dean, Al Fleenor, and Bob Farrell of ice cream parlor fame, Newport Bay specializes in fresh seafood.

The fresh pastry and fruit buffet included in the wonderful Sunday "Signature" brunch is certain to tempt you with mouth-watering delights. The Sunday brunch is served from 10 a.m. to 3 p.m.

Diners may choose to be seated in the newly redecorated interior where the rich decor adds instead of detracting from your meal, or when the weather is nice, at the outdoor patio tables. Newport Bay is open seven days a week, from 11 a.m. to 10 p.m. Sundays through Thursdays, and from 11 a.m. to 11 p.m. Fridays and Saturdays.





*who's who Outlook Jan 27, 1990*

## Nilsson Cabinets

18330 S.E. Clinton St., Gresham • 665-3681

Nilsson Cabinets has been specializing in kitchen and bathroom remodeling in the same Gresham location for the past 16 years.

We take pride in building to your specifications and we offer fair, competitive prices on counter tops, refacing cabinets, or new door fronts.

Our specialties are kitchen counter tops and cabinets. And our new or remodeled cabinets come with a very fair price tag.

Ever happy to please our customers, we offer free estimates and give discounts to senior citizens. We are licensed and bonded (BB #35024).

We use both plywood and solid wood products, whichever the customer prefers. And we do small commercial and residential jobs. We also make original furniture — entertainment centers, show cases, chests of drawers, and other specialty items.

## Northwest In A Basket

*who's who  
Outlook  
Jan 27, 1990*

1005 N. Main St., Gresham • 665-1570

"We are here to promote Oregon" is the driving force behind a wonderful customized gift basket business located in Gresham! Northwest in a Basket offers a wide variety of Northwest gourmet foods and gifts attractively arranged in baskets, and various other types of containers such as hat boxes, mini woks, champagne buckets or anything you might imagine! They cater to all occasions, including any holiday, business function, promotions, thank you's, housewarmings, get well, weddings, showers, birthdays, ...anytime you want to convey a nice thought or show gratitude. Northwest baskets are a nice diversion from the traditional flowers. Your basket will be customized and they will work within your budget. You can have your gift basket delivered or shipped worldwide.

Northwest in a Basket is owned and operated by Sherrill Tyler and Diane Walker. Both ladies felt there was a lack of Oregon products in the area. They are located in the Walker Travel Service Building and are open Mon.-Fri. 10 a.m. to 4 p.m. or by appointment.

Northwest in a Basket affords you the luxury of staying at home and still finding that special, a little out of the ordinary gift for any occasion.

Visit or call Northwest in a Basket soon!



*who's who Outlook Jan 27, 1990*

## Nutri/System

877 N.E. Hogan Road, Gresham • 669-7516

For 19 years, NutriSystem weight loss program has been serving the people in the metropolitan area. For the past six months, we have been in our new location on Hogan Road.

Our qualified, professional staff is eager to help you become acquainted with our comprehensive, hunger-free weight-loss program.

Our nutritionally balanced meals, combined with behavioral changes, our professional counseling and staff support, ensure your success with the program.

For "Successful weight loss...for life," call us at 669-7516.





*who's who  
Outlook*

## Mt. Hood Community College

26000 S.E. Stark • Gresham • 667-6422

Responsive to the changing needs of its growing community, Mt. Hood Community College not only offers a solid base of 125 two-year transfer and career-training programs, but much more. The college also serves as a cultural center, a meeting place and a convenient resource for area residents, organizations and businesses.

MHCC, now in its 24th year, operates from a 212-acre main campus in Gresham and two satellite centers in Maywood Park and Lynch Park. The Gresham location houses the Northwest's largest swimming facility, a community access television studio, a planetarium, a beauty school and a special project for disadvantaged youths. Grant programs at the two satellite centers are directed at retraining dislocated workers and families who need help establishing economic self-sufficiency.

In 1988-89 more than 26,800 students took a class or classes at Mt. Hood Community College. Many were working toward a degree, others were upgrading job skills or pursuing new careers, some were simply taking classes for personal enrichment. They attended day, evening and weekend classes during the "traditional" academic terms, as well as short-term classes during the college's "mini-terms."



*who's who Outlook Jan 27, 1990*

## Blockbuster Video

2055 N.E. Burnside, Gresham • 661-1100

Gresham's newest video store — Blockbuster Video — is family oriented. We do not carry X-rated movies and all children's videos are only \$1.50.

At Blockbuster, we offer more than 30 different categories to choose from, including Academy Award Winners, action, comedy, documentary, foreign, horror, instructional, religion, mystery, sci-fi, westerns, and a huge selection of Nintendo.

Your Blockbuster free membership card allows you to zip through our computerized checkout counter and be on your way in seconds — No waiting.

We're open 365 days a year from 10 a.m. until midnight, including Saturdays, Sundays, and holidays. We also rent videocassette players. We are conveniently located in the Oregon Trails Shopping Center.



*who's who Outlook Jan 27, 1990*

## Far West Federal Bank

1101 N.E. Burnside, Gresham • 666-9445

"Gresham's Far West Federal Bank has been rated the fastest-growing branch in the system," says Melva Koch, operations manager shown here with other staff members.

Far West offers a full range of banking services to the Gresham community. From safe deposit boxes to checking accounts, from certificates of deposit to money market accounts, Far West has it all.

It is important to have a trained and dependable team of professionals who work well with each other, and with the community, Koch says. And Far West boasts one of the best teams in the area.

Senior Financial Services Representative Paula Ashley; Senior Customer Services Representatives Alexis Tappert, Kathy Seely, Linda Carey, and Kristy Holt; Customer Service Representatives Kelle Wilmarth, Cindy Sabin and Amie Rowlands all form the special team at Far West.







*who's who. Outlook. Jan 27, 1990*  
**Mt. Hood Oil Co.**

**Gresham • 665-2188**

**Estacada • 630-3276**

**Portland • 257-0076**

Mt. Hood Oil Company, with offices in Gresham and Estacada, has been owned and operated for 26 years by Bill and Mary Jane Felker.

We offer a full line of petroleum products, featuring Unocal lubricating oils and greases, with emphasis on sales of bulk lubricants to commercial industries and fleet accounts in Portland, East Multnomah and Clackamas County areas.

We also feature full-service heating oil sales to home owners and diesel and gasoline sales to commercial and farm accounts throughout East county.

Mt. Hood Oil Company is an independent franchise of Pacific Pride, the commercial fueling system with a large card lock system on the West Coast with more than 160 fueling sites.

Mt. Hood Oil Company also is a distributor of the Wynn Oil Co. Industrial Products division, which specializes in cutting oils and synthetic coolants for the machining industry.

Mt. Hood Oil Company features quality products and stresses the importance of providing service keyed to each customer's needs.



*who's who. Outlook. Jan 27, 1990*  
**Briggs Auto Electric Inc.**

**2425 N.W. Birdsedale, Gresham (202nd & Burnside) • 666-FAST**

BRIGGS AUTO ELECTRIC, INC. has served Gresham and East County's auto repair needs for the past 15 years.

Over that period of time, we have grown from a small one-man operation dealing with just electrical problems, to a full-size, one-stop auto repair center.

We have broadened our service from wiring and computer-running problems, to include engine repair and replacement, tires, brakes, wheel alignments, tuneups and all mechanical repairs.

Our business — a family owned Firestone dealer — is proud to announce that General Motors has recognized the quality of our work by selecting us as the official Delco-Tech Service Center for the Gresham area.

For the same customer satisfaction with one-stop auto repair, which has built our reputation, please call 666-3278. For more information on Delco-Tech, call 666-3205.



**Mountain View  
Federal Credit Union**

**GRESHAM VILLAGE  
665-8185**

**ROGERS SQUARE  
665-5659**

**COLLEGE SQUARE  
665-9222**

*who's who. Outlook*

There's a "bank in Gresham (in fact, three of them) where you don't have to whisper! Thirty-five years ago, a bunch of local folks decided they were tired of being a customer, and started their own co-operative "bank" -- **Mountain View Credit Union**. Word got around and over the years, nearly 7,000 of their neighbors joined, you can too! Because of Mountain View's unique "community charter" most anyone who lives in East County can have a share in their own credit union.

So, if you're fed up with whispering and ready to change your banking to a place where laughter is encouraged, loans are cheap, interest on savings is high, and the manager's don't get their orders from downtown Portland, drop by one of our branches for a visit. You'll be glad you did!





# DOWNTOWN GRESHAM

IS HOT FOR YOUR BUSINESS....

YES...THAT'S RIGHT...DOWNTOWN GRESHAM  
IS THE **HOT SPOT** TO RELOCATE YOUR BUSINESS

-----  
**THE HOT ADDRESS IS 200 N.E. 2nd**

Downtown GRESHAM is open for business and we want yours to grow with us into the 90's.

**\*\* prime commercial space is now available for lease \*\***  
**RETAIL OR OFFICE**

Ground Floor - 1600 to 4800 sq. ft. will remodel  
Next to **Chum's Cafe, Flowers by Malcoms**  
**American Cancer Society, First**  
**Interstate Bank, Garden Village**  
**Restaurant**

(American Cancer Society's Discovery Center now occupies this space & desires to reduce their size. Will remodel)

Second Floor - 156 to 1200 sq. ft. Facing Powell  
Next to **Elden's Prosthetics Lab, Tak Ochiai's**  
**Dental Ceramics, Benjamin Franklin S&L, Gresham**  
**Realty, Pacific First Federal S&L**

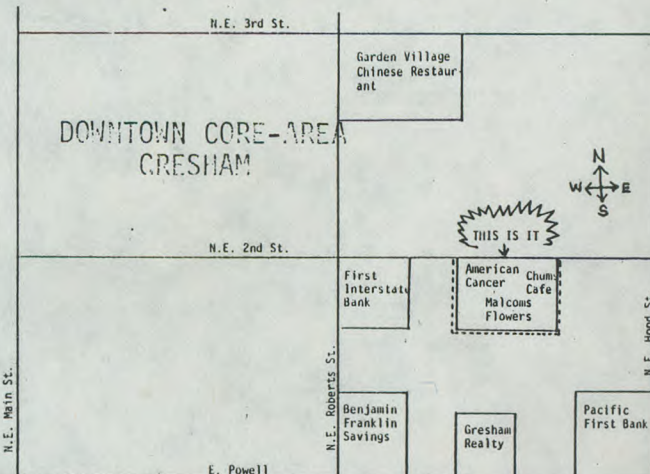
FACT: Downtown Core-area Gresham has withstood the slow times of the eighties and is alive, prosperous and growing...and is ready for the nineties. **Our rents are reasonable**, and assures that **you save big dollars** over the higher priced areas.

**" come on down to the core area and see how well we are doing!!"**

For Details, please call:

Bill Klausman, Owner 667-0720/777-3361  
Elden Myrben, Manager 666-7697  
Real Estate Marketing Concepts,  
Leasing Agent (Ron Goodman or  
Tom Keefe) 666-1100

\*\*\* PRIME COMMERCIAL SPACE FOR LEASE \*\*\*





# Who's Who 1991 Index

## Gresham Area Businesses

Name	Page
20/20 PROPERTIES, Inc. - Mike Graham	4
20/20 PROPERTIES, Inc. - Patti Gage	4
99 Cent Store	4
Animal Land	5
Aspen Highlands	5
B-M Income Tax	5
Beauty On The Go	5
Bee Rent-A-Car	5
Blockbuster Video	6
Burns Feed Store	6
Camera Connection	6
Camp's Lumber & Building Supply	6
Carlson Chevrolet	6
Cascade Athletic Clubs	7
Cascade Marketing	7
Cascade Quality Custom Upholstery	7
CB's Tropical	7
Cedarville Inn	7
Cellular Network	8
Century 21, Columbia Realty	8
Clackamas County Bank	8
Columbia Bookkeeping	8
Country Mill	8
Countryside Pet Spa	9
Create-A-Look	9
Crown Carpet	9
Cynthia's Sewing Machines	9
Diet Center	10
Diet Light	10
Domino's Pizza	10
Dorine's Rockwood Floral	10
Duane's Bookkeeping	10
Electrolysis By Jackie	11
ERA Freeman & Whistler Inc., Realtors	11
ERA Freeman & Whistler Inc., Realtors	11
ERA Town & Country	11

Name	Page
Nancy's Floral	22
O'Hara's Manor	22
Oregon Craft & Floral	22
Oregon Realty	22
Oregon Realty - New Homes	23
Paulson's Floor Coverings	23
Peterson Plumbing	23
Piano City	23
Planned Parenthood	24
Professionals 100	24
Prudential Homefolk Realty	40
Pub 181	24
Rainbow's End Pre School And Day Care	24
Ray Bucy & Associates Inc., Realtors	24
RE/MAX Associates Inc., Realtors	25
Real Estate Marketing Concepts, Realtors	25
Rockwood Gardens Apartments	25
Rose City Sign Co.	25
Sandy's Camera Shop	25
School Bus Services, Inc.	26
ServiceMaster	26
Shirley A. Wilson Travel Services	26
Skateworld	26
The Special Place	26
Stan Wiley	27
Stark's Vacuum	27
Stork's Nest Baby Boutique	27
Supercuts	27
Thrifty Auto Supply	28
Total Rental Center	27
Town & Country Travel	28
Track 1 Music	28
Travel Advisors	28
Truck Connection	29
Truffle Hunter Restaurant	29
Twice Is Nice	29
Vanco	29



Good 4 Less	12
Fred's Sound Of Music	12
G2 Associates, Inc.	12
Gibson Bowles Inc., Realtors, Better Homes & Gardens	12
Gresham Ford	12
Gresham Gymnastics	13
Gresham Heights Learning Center	13
Gresham Off Road	13
Gresham Paint & Decor	13
Gresham Plaza	3
Gresham Sanitary Service, Inc.	14
Gresham Sun & Style	14
Gresham Village Florist	14
H & H Auto	14
H & R Block	14
Hair Graphics	15
Hawley Electrology	15
Head To Toes	15
The Heritage Mt. Hood	15
Homeseeker's Realty	16
Hunt's Building Maintenance	16
The Insurance Center	16
J.S. Nelms Construction	16
Jiffy Lube	16
Jo Haverkamp	17
Just Tires	17
Keepsake Video Productions	17
Keith's Auto Repair	17
Kelly Services	18
Kerr Properties	18
Key Bank	18
Kight Photography	18
Learning Palace	18
Liberty Manual	19
Loop Hiway Towing	19
Lou G. Scriven's Insurance Agency	19
Lutz-Snyder Co. Realtors - Sandy	19
Lutz-Snyder Co. Realtors - Suburban	19
Marcus Realty	20
Masterplan Construction	20
The Matson-Nielson Co.	20
Movie House Video	21
Mt. Hood Community College	21
Mt. Hood Swim Team	21
Mt. View Federal Credit Union	21
Multnomah Falls Lodge	22

West One Bank	30
Women's Clinic, P.C.	30

## Downtown Gresham Area

Accuprint	30
Amiton Furniture	31
Don Brown & Associates	31
Flowers By Malcoms, Ltd.	31
Gannaway Bros. Jewelers	31
Gold Art Jewelry	31
Gresham Book Exchange	32
Miles Jewelry	32
Nostalgia Antiques	32
Pacific Crest	32
Pasta Pazzo	32
Portland Outdoor Store	33
Stones	33

## Gresham Area Professionals

1300 Linden Law Offices	34
Double T Tax Associates	33
Eki, Dr.	35
Eye Care Centers	35
Fairlawn Towne & Health Center	35
Gevurtz, Menashe, Hergert, Larson & Kurshner, P.C.	35
Gresham Naturopathic Clinic	36
Gresham Optical	36
Legacy Immediate Care	36
Rockwood Naturopathic	36
The Tax Shelter	36

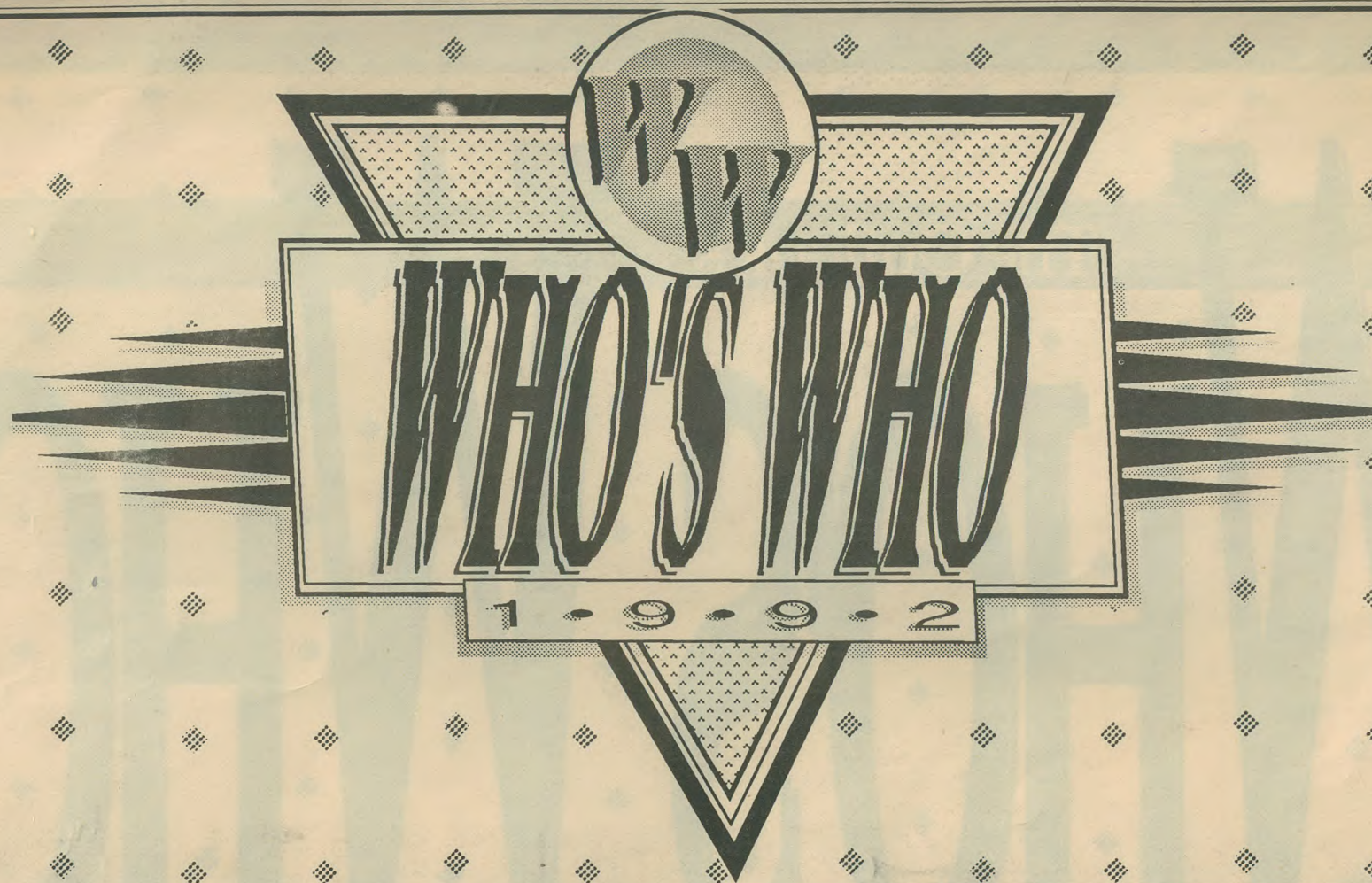
## Sandy & Boring Area Businesses and Professionals

Bill's Automotive	37
Boring Gutter Lady	37
Bundy Fence Co.	37
Calamity Jane's	38
Classic Holiday Travel	38
Donna's Clothes Closet	38
The Log Lodge	38
Mt. Hood Tire Inc.	38

## Gresham Area Churches

Christ Light Unity Church	39
First Baptist Church of Gresham	39
Open Door Baptist Church	39





# I • N • D • E • X

20/20 Properties, Inc., Realtors - Mike Graham.....	3
A Bra Lingerie Boutique.....	3
Amiton Furniture.....	25
Beauty On The Go.....	3
Burns Feed Store.....	4
R-M Income Tax & Bookkeeping Service.....	4

Kight Photography.....	11
Learning Palace, The.....	11
Legacy Immediate Care.....	12
Loop Hiway Towing.....	12
Lou Scrivens Insurance.....	12
Lutz Snyder Co. Candy.....	12



Camp's Lumber.....	4
Cascade Athletic Clubs.....	4
Cedarville Inn.....	5
Century 21/Columbia Realty - Janet McGill.....	5
Clackamas County Bank.....	5
Columbia Bookkeeping.....	5
Crown Carpets.....	5
Cynthia's Sewing Machines.....	6
Denture Studio, The.....	6
Diet Center.....	6
Diet Lite.....	6
Don Brown & Associates.....	25
Donut World.....	6
Don's Restaurant.....	25
Double T Tax Associates.....	7
Edward D. Jones.....	26
Eki, Norman, M.D.....	7
Electrolysis By Jackie.....	7
Energy Homes, Inc.....	7
ERA Freeman & Whistler, Inc., Realtors - Leslee Dirk, Rossana Calcagno.....	7
Fairview Thriftway.....	8
Farmington Square.....	8
First Baptist Church.....	23
Flowers By Malcolm's.....	26
G2 Associates.....	8
Gannaway Bros. Jewelers.....	26
Gevurtz, Menashe, Hergert, Larson & Kurshner, P.C.....	8
Gibson Bowles Inc., Realtors, Better Homes and Gardens.....	8
Gold Art Jewelry.....	26
Gresham Inn, The.....	26
Gresham Missionary Baptist Church.....	23
Gresham Naturopathic.....	9
Gresham Off Road.....	9
Gresham Optical.....	9
Gresham Sanitary Service, Inc.....	9
Gresham Skateworld.....	10
Hair Studio.....	10
Head to Toes.....	10
Health Plus Weight Control System.....	10
Heritage Mt. Hood, The.....	11
Hillsview Covenant Church.....	23
Immanuel Lutheran Church.....	24
Kelly Temporary Service.....	10
Kerr Properties.....	10

Mount Hood Medical Center.....	14 & 15
Mt. Hood Community College.....	13
Mt. Hood Festival of Jazz.....	13
Mt. Hood Swim Team.....	13
Mt. Hood YMCA East County Youth Service Center.....	27
Mt. View Federal Credit Union.....	13
Multnomah Falls Lodge.....	13
Nancy's Floral.....	16
Nevis, Dr. Richard L., D.M.D.....	16
North Carolina Furniture Warehouse Sales, Inc.....	16
Nostalgia Antique Mall.....	27
Open Door Baptist Church.....	24
Oregon Realty.....	16
Pack 'N' Mail.....	16
Paulson's Floor Coverings.....	17
Pete Carlson Chev.....	17
Peterson Plumbing.....	17
PIP.....	17
Plants, Pots & Pond.....	17
Portland Outdoor Store.....	27
Postal Annex.....	18
Powell Valley Lawn & Garden.....	18
Prudential Homefolk Realty.....	28
Pyrographics.....	18
Ray Bucy & Associates.....	18
Real Estate Marketing Concepts.....	18
Redeemer Evangelical Lutheran Church.....	24
Rockwood Naturopathic.....	19
Sandy Baptist Church.....	24
School Bus Services, Inc.....	19
Shirley A. Wilson Travel Services.....	19
Stamm, Stuart, Bybee Insurance.....	19
Stan Wiley, Inc., Realtors.....	19
Stark's Vacuums.....	20
STONES.....	27
Stork's Nest Baby Boutique.....	20
Supercuts.....	20
Thrifty Auto Supply.....	20
Total Rental Center.....	20
Town & Country Travel.....	21
TransAmerica Title.....	21
Transitions Salon.....	27
Travel Advisors.....	21
Twice is Nice.....	22
Village Apartments.....	22
Women's Clinic.....	22



# Signs of holiday shopping season keep retailers in good cheer

■ Plenty of positive economic indicators point to healthy Christmas sales for most stores in East Multnomah County 11-29-93

By ERIC GORANSON

of The Oregonian staff

Retailers are wearing broad and genuine smiles this year. The Christmas shopping rush is on and every indication is for a banner season for stores.

Unemployment is down, personal income is up and just about every economic barometer is positive for most residents of Oregon and East Multnomah County.

Christmas sales forecasts are up from what they were two months ago and Oregon's outlook is the strongest of the Pacific states, said Jeff Thredgold, chief economist for Keycorp Inc. All of Oregon's neighbors — Washington, California and Japan — have sick or slumping economies.

People will spend more this Christmas than last year, but the percentage of increase won't be as high, Thredgold forecast.

One positive economic indicator is that the housing resale market is strong and Oregon housing starts are twice the national average, said John Mitchell, chief economist for U.S. Bancorp.

The gross domestic product, which grew by only 1.4 percent the first half of 1993, may be up as much as 4 percent for the last three months of the year, said Thredgold. New jobs in Oregon grew by 2 percent in 1993 and could grow 2.6 percent next year, he said.

The downside, he cautioned, is that spending by consumers and corporations is being fueled by borrowed money while the move to create jobs is weak and can't be sustained.

But more jobs mean fewer unemployed.

Only 3,700 people received unemployment compensation out of the Oregon Employment Department office in Gresham last week, said Dave Scheele, office manager. This compares with 5,000 in July. Some ex-workers, he cautioned, may have had their benefits period expire.

The building boom in Gresham, Troutdale and Sandy is bringing in new families — and customers. So most local stores already have increased their stocks and hired people to handle expected higher

Christmas sales.

The biggest employment increases are in the general merchandise and apparel sectors with drug store, trucking and warehousing, furniture and furnishings and other retail outlets also boosting their hirings.

Hiring in these fields should increase 4.6 percent in November, 4.1 percent in December and then fall 8.4 percent in January, said Brad Angle, Oregon Employment Department economist.

More than 15 of the new hires already are working at Gresham's Emporium.

"Sales have been phenomenal, our inventory is up and we hired early," said store manager Dale Johnson. "We see a very strong holiday with people spending more money."

People are looking for better quality and higher priced goods, said Johnson and Peter Petersen, manager of the Mall 205 PayLess Drug Store.

At the Gresham G.I. Joe's, people are taking advantage of layaways a lot earlier than usual, said store manager Tom Dietz.

Even the cold weather is regarded positively. It should spur sale of clothing and heating devices, retailers said.

About the only caution came from Fred Meyer spokesman Rob Boley, who termed the sales outlook cautiously optimistic because of an uncertain economic future.

Boley expects greater demand for clothes this season because of a wet, cold spring and early summer and a dry, warm fall keep sales below normal. Nevertheless, he said, 1993's first-half sales grew by 4.1 percent while Fred Meyer Inc.'s net profit rose 19 percent.

As for the hottest items, look for electronic learning aids, including starter computers and pre-school items to sell well, Boley said.

Anything to do with Jurassic Park, Batman, Little Tyk's, children's computers and Ninja Turtles are favorites for youngsters, while photo laserdiscs and bread-makers seem to be popular with adults, said David Mattson, manager of Gresham's Best store.



## Guide to Current Businesses . . .

- |   |   |
|---|---|
| 1 <b>ACCUPRINT BY JULIE</b><br>260 N.E. 2nd                 | 19 <b>HAIR TAILORS</b><br>17 N.W. 1st               |
| 2 <b>AMITON FURNITURE</b><br>202 N. Main                    | 20 <b>HERBS &amp; I</b><br>509 N. Main              |
| 3 <b>ASHLEY'S RESTAURANT</b><br>436 N. Main                 | 21 <b>W.R. HICKS</b><br>211 N.E. Roberts            |
| 4 <b>BY REQUEST</b><br>101 N. Main                          | 22 <b>KEY BANK</b><br>234 N. Main                   |
| 5 <b>CARROLL FUNERAL HOME</b><br>257 S.E. Roberts           | 23 <b>KIDS COUNT TWO</b><br>589 N. Main             |
| 6 <b>CHRISTINA'S COUNTRY GARDEN</b><br>1304 E. Powell Blvd. | 24 <b>M &amp; M RESTAURANT</b><br>137 N. Main       |
| 7 <b>CHUM'S CAFE</b><br>204 N.E. 2nd                        | 25 <b>MAIN STREET GROCERY</b><br>120 N. Main        |
| 8 <b>CLOUDTREE &amp; SUN</b><br>112 N. Main                 | 26 <b>MILES JEWELERS INC.</b><br>35 E. Powell Blvd. |
| 9 <b>FARMERS INSURANCE</b><br>55 E. Powell Blvd.            | 27 <b>PACIFIC CREST CLOTHING</b><br>130 N. Main     |
| 10 <b>FLOWERS BY MALCOMS LTD.</b><br>202 N.E. 2nd           | 28 <b>PAULETTA'S</b><br>209 N. Main                 |
| 11 <b>FIRST INTERSTATE BANK</b><br>110 N.E. Roberts         | 29 <b>RICK'S HALLMARK</b><br>205 N. Main            |
| 12 <b>GANNAWAY JEWELRY</b><br>15 N.W. First St.             | 30 <b>SILK BLOOMERS</b><br>507 N. Main              |
| 13 <b>GORDON STONE'S</b><br>40 N.E. 2nd                     | 31 <b>SJOLUNDS JEWELERS</b><br>23 E. Powell Blvd.   |
| 14 <b>GLASS BUTTERFLY</b><br>29 W. Powell                   | 32 <b>TOY BEAR</b><br>121 N. Main                   |
| 15 <b>GOLD ART JEWELRY</b><br>22 N.E. Roberts               | 33 <b>TRUFFLE HUNTER</b><br>225 W. Powell Blvd.     |
| 16 <b>GRESHAM BOOK EXCHANGE</b><br>30 N.W. 2nd              | 24 <b>U.S. NATIONAL BANK</b><br>300 E. Powell       |
| 17 <b>GRESHAM DRUG CO.</b><br>5 E. Powell                   | 35 <b>WALRAD INSURANCE</b><br>105 N.E. Roberts      |
| 18 <b>GRESHAM MUSIC CENTER</b><br>837 E. Powell Blvd.       | 36 <b>THE YARN STATION</b><br>29 N.W. 1st           |



12-30-93

### 3 grocery stores may want to move into Zim's Market

GRESHAM — Three grocery stores are interested in moving into the mostly vacant Zim's Market at the corner of Southeast Stark Street and 223rd Avenue, said the owner's attorney.

However, owner Ada Zimmerman must first get permission to change a zoning error made by the city of Gresham, attorney George Hansen said.

Zimmerman has applied for the change and expects to get an answer by March. If it is approved, a new tenant could move in shortly after.

Although the zoning change would allow Zimmerman to convert the 31,000-square-foot building to a minimall, she wants to keep it as a grocery.

The most attractive offer is for a grocery store and attached variety store, Hansen said.

In addition, about 10 real estate brokers have shown interest in the property.

"We've had a whole bunch of inquiries," Hansen said.

Zim's Red Apple Market closed in September, threatening to end a history that began in 1901 when a country general store first opened at the site.

Carl and Ada Zimmerman bought the store in 1938 and ran it until 1969.

Since then, two other grocers leased the building. Most of that time it was known as Zim's 12-Mile Corner.



# Real estate company owners

By **DIONNE PEEPLES-SALAH**

*of The Oregonian staff*

GRESHAM — Two owners of a local commercial real estate company have bought the former Stones store in downtown Gresham.

Sue O'Halloran, co-owner and broker at Kohler, Meyers and O'Halloran Inc., announced Monday that she and partner Cliff Kohler bought the property.

She would not disclose the amount they paid for the building.

The building, at 40 N.E. Second St., once housed the Stones clothing store, which closed in December after serving Gresham for more

than 30 years. The owner blamed lagging sales for the closing.

A clothing store won't replace the Stones store, O'Halloran said. Instead, she and Kohler want a coffee shop, a bookstore, art gallery or antique shop in the 7,200-square-foot building.

"But what we want and what we get may be two different things," O'Halloran said.

The Portland Outdoor Store, 211 N.E. Roberts Ave., also closed recently.

As old businesses leave downtown and space for new ones becomes available, some say it is important to consider what residents want and whether the new businesses will a

1 Jan 9 92



## buy Stones store building

tract shoppers and help sustain the downtown core.

"They have to be something that is going to draw people down here. There has to be a niche there, a uniqueness or reputation," said Rebecca Marcus, executive director of the Gresham Downtown Development Association. She said that whatever takes the place of the Stones store must draw people to downtown Gresham.

Retail consultant Burton Nudelman said areas such as downtown Gresham are where small, specialty shops can survive and thrive.

"There is a need and desire to shop at specialty stores. A lot of them are going out be-

cause they aren't managed well. But if they are managed well, specialty stores will survive in almost any economy," Nudelman said.

Jerry Gillham, executive director of the Gresham Area Chamber of Commerce, said some residents have said they want a grocery and upscale clothing stores downtown.

Jim Marshall, a Gresham real estate broker, said he would like to see a computer-related store downtown or something to play to the technological/computer boom.

He said he would like to see stores that are more significant, have a bigger draw and generate more money than the quaint shops that currently line downtown streets.



### **Community Design Awards go to Gresham businesses**

GRESHAM — The Gresham Planning Commission has announced its annual winners of the 1995 Gresham Community Design Awards.

The winners have remodeled or built new in the past year. They are: The Christian Copyright Licensing Inc., 17201 N.E. Sacramento St., for overall design; the Boston Market, at 1650 N.E. Eighth St., for pedestrian friendly development; Lewis Holdings Limited, 710 N.E. Cleveland Ave., for the remodel of an old fruit processing plant into an office building; The Sheet Metal Training Center, 2379 N.E. 178th Ave., for its use of materials that were well-suited to the purpose of the building.

An honorable mention went to the Legacy Mount Hood Family Birth Center, 24800 S.E. Stark St., for the blending of an addition into the existing building. Special recognition was given to Shari's Restaurant at the Oregon Trail Shopping Center for landscaping that includes a wooden bridge and seasonal flowers.

— From staff reports

OREGONIAN  
19 JULY 1996



8/6/98

# Downtown Places



**GRESHAM  
DOWNTOWN**  
DEVELOPMENT  
ASSOCIATION



**O**ne hundred years ago the village of Gresham boasted a feed mill, a blacksmith shop, a hotel, a church, a school, a bakery and a store that advertised 5 and 10 cent counters. Soon to follow were grocery stores, meat markets and banks.

By 1912. Gresham's population of 700 rarely needed to go beyond Main Street to find the necessities of life. The Gresham Novelty Store, located at Powell and Roberts and heated by a pot belly stove, stocked its shelves with European handpainted china, pressed glass, assorted tinware for cooking, clothing and sewing notions. There were also shaving mugs and mustache cups for husbands. Children loved the wonderful array of nuts and confections.

Of the 50 or so businesses lining Main Street throughout the next two decades, three are still selling the same kind of merchandise in the same location.

And, now, a century later, the City of Gresham enjoys the status of the fourth largest city in Oregon. The intersection of Main and Powell remains the hub of a vital and growing downtown. A wide selection of businesses provide a variety of services and a unique shopping experience.

The Gresham Downtown Development Association was formed to promote the revitalization of the downtown area. The Association supports the neo-traditional approach to building a liveable city center. Safety, crime prevention, new development and producing promotional events are just a few ways in which GDDA works for the community.

## **Gresham Downtown Development Association**

323 N.E. Roberts • P.O. Box 2043  
Gresham, Oregon 97030

(503) 665-3827



from Division Street  
to downtown



Ride the  
MAX  
to Gresham  
Central Station

MAX Light Rail

Hood Street

9th Street

8th Street

MAX Gresham Central Station

7th Street

Kelly Street

Ride to Downtown  
Farmers' Market  
on MAX,  
Your return ticket  
is free!  
Present your ticket  
stub at the market  
managers booth.

Main Street

8

30

29

5th Street

2

Gresham  
Pioneer  
Museum

4th Gresham

GDPA  
Office

17

28

3rd Street

24

9

22

26

11

19

12

27

2 Hour  
City Parking

15

2 Hour  
City Parking

16

6

10

23

13

25

19

21

23

15

2 Hour  
City Parking

15

2 Hour  
City Parking

15

2 Hour  
City Parking

15

2 Hour  
City Parking

15

2 Hour  
City Parking

15

2 Hour  
City Parking

15

2 Hour  
City Parking

15

2 Hour  
City Parking

15

2 Hour  
City Parking

15

2 Hour  
City Parking

15

2 Hour  
City Parking

15

2 Hour  
City Parking

15

2 Hour  
City Parking

15

2 Hour  
City Parking

15

2 Hour  
City Parking

15

2 Hour  
City Parking

15

2 Hour  
City Parking

15

2 Hour  
City Parking

15

2 Hour  
City Parking

15

2 Hour  
City Parking

15

2 Hour  
City Parking

15

2 Hour  
City Parking

15

2 Hour  
City Parking

15

2 Hour  
City Parking

15

2 Hour  
City Parking

15

2 Hour  
City Parking

15

2 Hour  
City Parking

15

2 Hour  
City Parking

15

2 Hour  
City Parking

15

2 Hour  
City Parking

15

2 Hour  
City Parking

15

2 Hour  
City Parking

15

2 Hour  
City Parking

15

2 Hour  
City Parking

15

2 Hour  
City Parking

15

2 Hour  
City Parking

15

2 Hour  
City Parking

15

2 Hour  
City Parking

15

2 Hour  
City Parking

15

2 Hour  
City Parking

15

2 Hour  
City Parking

15

2 Hour  
City Parking

15

2 Hour  
City Parking

15

2 Hour  
City Parking

15

2 Hour  
City Parking

15

2 Hour  
City Parking

15

2 Hour  
City Parking

15

2 Hour  
City Parking

15

2 Hour  
City Parking

15

2 Hour  
City Parking

15

2 Hour  
City Parking

15

2 Hour  
City Parking

15

2 Hour  
City Parking

15

2 Hour  
City Parking

15

2 Hour  
City Parking

15

2 Hour  
City Parking

15

2 Hour  
City Parking

15

2 Hour  
City Parking

15

2 Hour  
City Parking

15

2 Hour  
City Parking

15

2 Hour  
City Parking

15

2 Hour  
City Parking

15

2 Hour  
City Parking

15

2 Hour  
City Parking

15

2 Hour  
City Parking

15

2 Hour  
City Parking

15

2 Hour  
City Parking

15

2 Hour  
City Parking

15

2 Hour  
City Parking

15

2 Hour  
City Parking

15

2 Hour  
City Parking

15

2 Hour  
City Parking

15

2 Hour  
City Parking

15

2 Hour  
City Parking

15

2 Hour  
City Parking

15

2 Hour  
City Parking

15

2 Hour  
City Parking

15

2 Hour  
City Parking

15

2 Hour  
City Parking

15

2 Hour  
City Parking

15

2 Hour  
City Parking

15

2 Hour  
City Parking

15

2 Hour  
City Parking

15

2 Hour  
City Parking

15

2 Hour  
City Parking

15

2 Hour  
City Parking

15

2 Hour  
City Parking

15

2 Hour  
City Parking

15

2 Hour  
City Parking

15

2 Hour  
City Parking

15

2 Hour  
City Parking

15

2 Hour  
City Parking

15

2 Hour  
City Parking

15

2 Hour  
City Parking

15

2 Hour  
City Parking

15

2 Hour  
City Parking

15

2 Hour  
City Parking

15

2 Hour  
City Parking

15

2 Hour  
City Parking

15

2 Hour  
City Parking

15

2 Hour  
City Parking

15

2 Hour  
City Parking

15

2 Hour  
City Parking

15

2 Hour  
City Parking

15

2 Hour  
City Parking

15

2 Hour  
City Parking

15

2 Hour  
City Parking

15

2 Hour  
City Parking

15

2 Hour  
City Parking

15

2 Hour  
City Parking

15

2 Hour  
City Parking

15

2 Hour  
City Parking

15

2 Hour  
City Parking

15

2 Hour  
City Parking

15

2 Hour  
City Parking

15

2 Hour  
City Parking

15

2 Hour  
City Parking

15

2 Hour  
City Parking

15

2 Hour  
City Parking

15

2 Hour  
City Parking

15

2 Hour  
City Parking

15

2 Hour  
City Parking

15

2 Hour  
City Parking

15

2 Hour  
City Parking

15

2 Hour  
City Parking

15

2 Hour  
City Parking

15

2 Hour  
City Parking

15

2 Hour  
City Parking

15

2 Hour  
City Parking

15

2 Hour  
City Parking

15

2 Hour  
City Parking

15

2 Hour  
City Parking

15

2 Hour  
City Parking

15

2 Hour  
City Parking

15

2 Hour  
City Parking

15

2 Hour  
City Parking

15

2 Hour  
City Parking

15

2 Hour  
City Parking



## Places to Eat & Drink

### Chum's Cafe 1

204 NE Second

661-4929

Great food and friendly service. Sandwiches, shakes, ice cream, fresh baked pie, micro brews and catering.

### El-Niño 2

436 N Main

618-8100

Healthy, fresh Mexican & American food. Full service bar downstairs at Cabaña Café Bar & Grille.

### Jelly Beans Deli & Fountain 3

400 NW Miller

666-5757

Full line deli - Ice Cream - Candy - Catering - Espresso - Fresh baked goods - Beer - Micro Brews - Lottery

### Roberts Street Bar & Grill 4

290 NE Roberts

618-9058

Family dining - Breakfast, lunch & dinner. Downstairs bar with pool, darts & all lottery games.

### Sunny Han's Wok & Grill 5

305 N Main

666-3663

Healthy gourmet Asian cooking in a casual cafe. Open 7 days a week. Open at 11:00 a.m.

### Trails End Deli 6

33 NW First

666-3151

Fresh cooked meats, Grand Central breads, homemade soups & salads. Patio dining. Beer & wine available.

### Trufflehunter 7

225 W Powell

667-8224

Homestyle cuisine with premium wines, micro brews and draft beer. Summer salad menu, outdoor garden dining. Live jazz and blues Friday & Saturday evenings.

## Places to Look & Shop

### A Stamp Above 8

68 NE Division

674-9863

Rubber stamp art, supplies & classes.

### Amiton Furniture 9

202 N. Main

665-5095

Fine selection of sofas, glider rockers, futons, recliners, lamps, beds, grandfather clocks & curios

### Antiques by Renee 10

17 NW First

665-4091

Discover the fine "Treasures of Yesterday" for enjoyment today. Wonderful linens, furniture etc.

### Carowind Gallery 11

40 NE Second

661-4171

Visit Carowind for creative custom framing, beautifully framed art, jewelry, and unique accessories for home, office and garden.

### Cloudtree & Sun 12

112 N Main

666-8495

Kitchen, gift & home accessories.

### Dee's Studio Bridal & Formal 13

Corner of 3rd & Main

665-4666

Gown salon for all occasions. Wedding & formal - Accessories and boutique.

### Flowers by Malcolm 14

202 NE Second

665-9101

Balloons, flowers & gifts, tropicals & plants. Delivery to entire metro area.

### Glass Butterfly 15

29 W Powell

667-3600

Gresham's largest contemporary women's clothing and accessory boutique.



## **Gold Art Jewelry** 16

55 NW First 661-2929  
Timeless designs and fine gemstones and repairs. Greg Grokett, designer goldsmith.

## **Gresham Farmers Market** 17

Roberts Street between 2nd & 5th. 727-9828  
Open 8:30 - 2:00 Saturdays, May thru October. Fresh farm produce, honey, crafts, baked goods, nursery stock and more.

## **Gresham Historical Society** 18

410 N Main 661-0347  
See Gresham's history in artifacts and photos. Open Tues./Thurs./Sat., 10 a.m. - 4 p.m. Free admission, donations welcomed.

## **Gresham Village Florist** 19

121 N. Main 667-0360  
Whether just browsing or buying, be sure to stop by.  
Flowers - Plants - Vases - Baskets - Gifts

## **Lil' Britches** 20

325 N Main 492-9378  
Quality children's clothing. Boys and girls sizes, Preemie to 16. Head to toe accessories.

## **Silk Bloomers** 21

111 N Main 669-7746  
Reflect your personality with our silk flowers, creative gifts and interior accents.

## **Toy Bear, Ltd.** 22

130 N Main 661-5310  
"Play with the Best"  
Toys, books, dolls, games and plush animals.

## **William & Sons Jewelers** 23

105 N Main 665-2715  
Fine jewelry manufacturing & design. Watch, clock & jewelry repairs and engraving.

# *Places to* **Get Things Done**

## **Body & Soul Wellness Center** 24

234 N Main 669-3009  
Take time to "take care". Full service day spa offering massage, facials, hair, nails, body wraps and much more.

## **Davis & Fox Printing** 25

50 NW Second 667-3433  
Providing high quality printing, graphic design and image-setting to the Gresham area for over 18 years.

## **Christian Science Reading Room** 26

20 NE Second 666-3212  
Religious bookstore including study area.

## **Douglas L. Park, D.D.S.** 27

123 E Powell, Suite 300 665-0386  
Dentistry for children exclusively. Infants through teens.

## **Hobbs Electronics** 28

301 NE Roberts 661-2505  
We service camcorders, VCRs, TVs, monitors, big screens and stereos. We sell and install security.

## **Modern Upholstery** 29

502 N Main 666-1610  
Re-upholstery and window coverings. Residential and commercial.

## **The Leenders Group, Inc.** 30

532 N Main 665-9708  
New home construction, land development, consulting, planning and real estate.

## **3rd. Street Gym** 31

39 NW 3rd. St. 618-1312  
Try our cycling, martial arts, massage therapy, juice bar, jacuzzi or just come work out!