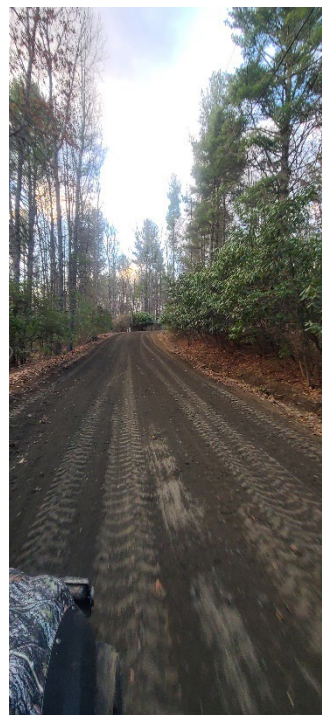




Community Changes and Improvements

Road Repairs and Maintenance

Road repairs and maintenance were ongoing thru the winter months and will continue into spring as our road contractor concentrates on making sure our roads are accessible. The improvements are already noticeable!



Beavers at Ashe Lake



As we enter into Spring and the lake gets busier we ask that you keep an eye out for beavers and notify us so we can have them removed. Beavers are a nuisance animal and can destroy all the trees around the lake and change the flow of water on the streams.

New ALPO Website

We are working on our new website:

www.myashelake.com

Your source for information, events, and community updates and events.

Carolina Water Service at Ashe Lake

Carolina Water Service hosted an informational session with property owners serviced by their company. In total 14 owners attended. Carolina Water Service is petitioning the NC Utility Board for permanent purchase of the **community wells and infrastructure** in Ashe Lake, a move that will be beneficial for our community. ALPO will be writing a letter of support to the Utility Board endorsing this move.

We encourage all CWS customers to register their account at their website and sign up for valuable information regarding your water service. You can sign up for service alerts (via text, phone call, or email) and stay up to date with happenings pertaining to your service.
<https://www.myutility.us/carolinawater>

The phone number for Carolina Water Service is **(800) 525-7990**. Customer Service agents are available M-F, 8AM to 5PM ET.

Carolina Water Service Emergencies (800) 525-7990
24 Hrs - 365 Days a Year.

Ashe Lake Ownership

The ALPO Board is taking steps to ensure that our Lake remains open to Ashe Lake residents and owners in perpetuity. Following advice from Legal counsel, the Lake will be dedicated to the community via a Deed Restriction. This change ensures that the Lake cannot be sold and will remain a vibrant part of our community.

Updated Contact Information

Has your mailing address, phone number or email address recently changed? Shoot us an email so we can update our records and keep you in the loop of happenings in our community. Please direct any questions, concerns, or requests to AsheLakePOA@gmail.com

Association Dues

Outstanding 2023 association dues will be mailed out during the 2nd week of April. Please remember that your dues are what funds our community and pay for the road maintenance, snow clearing, tree removal, insurance, and community improvements. Without your cooperation and contributions none of these would have been possible. **To date we have received approximately 35% of the 2023 dues.** Thank YOU neighbor for supporting your neighborhood!

Online Dues Payment

Online payment is here!! Beginning with the 2023 billing you will be able to make your ALPO dues payments online. We feel this will make payment of dues an easier process for some, rather than mailing in checks. If you are unable to access the link for online payment – reach out to us and we will resend it.

Snowy Start to Daylight Savings Time

Most of the High Country woke up to snowfall and a thin coating of ice on Sunday morning as the first day of daylight saving time (March 12th) also brought along some wintry precipitation.

The National Weather Service issued a Winter Weather Advisory for overnight Saturday and Sunday morning. Most locations across Ashe County received a light dusting of

snow and a mix of some sleet and freezing rain overnight. Thankfully, the brief winter blast did not cause any major traffic or power outage problems.

Dues and Property Sales

We have noticed some properties for sale in Ashe Lake, and we welcome the opportunity to settle any Association dues in arrears prior to sale. Please direct any inquiries regarding your dues to AsheLakePOA@gmail.com

Dreaming of Spring Garden

The West Jefferson library has a seed collection that allows Ashe County residents to go and get heirloom seeds for free. Vegetables and herbs galore, and all of them non-GMO and heirloom. Many of the seeds that are in the collection are from the ASU seed farms, and donated. MASSIVE free source of great seeds. Ya'll get to plantin!

<http://seedlibrary.brwia.org>

Indoor Seed Starting in the High Country

Blake Williams Agriculture N.C. Cooperative Extension, Ashe County

Around this time of the year, in the mountains, gardeners start getting stir-crazy. Extension starts receiving more calls asking about soil tests, garden preparations, seed sources, and first frost-free dates. It doesn't help that warmer climates are starting to get their hands dirty while we could still potentially see some snow. Here in Zone 6, gardeners should hold off on starting their seeds indoors. It may seem that the earlier you start your vegetables the earlier you can get them into production, however, this is simply not the case.

Conservatively, **our average last frost date is May 15th**. While it is likely that our last frost will be earlier than this date, traditionally this has been a safe date to mark on our calendars. To help Gardeners visualize this better, we have created the "[Ashe County Indoor Seed Starting Guide \(I\)](#)". This calendar provides gardeners with the starting dates for common vegetables and flowers, along with other growing information such as: days to germination; light condition requirements; and temperature requirements.

While there are numerous seed starting media available, we need to be selective with whichever media, or combination

of medias, we decide to use. Ideally, our media should be a fine particle size and homogenous throughout the mix to help hold water and prevent compaction. Do not use Garden soils to start seeds, as it is not sterile and likely to cause your seedlings exposure to pathogens.

Additionally, gardeners should decide which seed starting containers best fit their needs. Some may choose to use systems such as the Soil-block maker, but most will likely use plastic cells systems to start our seeds. However, if you are using these plastic cell systems, be sure to sterilize them from year to year. A simple 1 part bleach to 9 parts water solution is enough to wash and sterilize your containers.

If you have any questions about the above information and materials, or if you have any other questions about home gardens and ornamentals, please contact the Agriculture NC Cooperative Extension office at 336-846-5850.



Implementing Trash Stickers

Ashe County Environmental Services Department will begin enforcement of the sticker system and requiring a sticker for vehicles entering and using a convenience center.

- ❖ Spring 2023: County staff will begin soft enforcement of the sticker system and continue to distribute information about the changes.
- ❖ Summer 2023: Strict enforcement will begin and those without stickers will be turned away or fined.

Have questions about how this system will work?
Please email: trashstickers@ashecountygov.com or call 336-846-5554.

Domino's Pizza Returns to Ashe County

The Ashe County Chamber of Commerce held a ribbon cutting for Domino's pizza on Tuesday, March 14, welcoming them back to the county. The new location is at 789 East Main Street in Jefferson.

Domino's in Jefferson is owned by Sean Heaney and Blake Phillips. Heaney said he had worked for Domino's for 29 years and was "thrilled to have a store in Ashe County." **To Order call (336) 649-8474.**



Ashe Lake Events

We try to keep up with local events and festivals but there may be something we have missed. If there is an upcoming event or festival you would like to see included, please reach out and let us know. ashelakepoa@gmail.com



KEEP AMERICA BEAUTIFUL AFFILIATE

Keep Ashe Beautiful will be holding their 2023 county-wide **Spring Litter Sweep** on **Saturday, April 15.**

This is a great opportunity to get outside with your family, friends and co-workers and help cleanup this beautiful place we all call home. We will be volunteering to clean-up Nettle Knob from 163 to the entrances of our community. **Meet at the community dock at 9am.**

We will be picking up supplies – safety yellow t-shirts, trash pickers, gloves, first aid kit, trash bags and drive safely signs. Contact us to sign up for this effort so that we can get supplies for everyone.

If you would like to volunteer for future KAB events go to the KAB website www.KeepAsheBeautiful.org and click on the registration link or just send an email to keepashebeautiful@gmail.com.

Let's get together this spring to Keep Ashe Beautiful!

We are busy planning exciting social and clean-up opportunities for 2023. If you have any ideas, you would like us to consider and include please let us know. We are looking forward to a Spring Fling, Clean Up Events, Fishing Tournament, and many more.

Ashe Lake Property Owners Annual Meeting

Date: Saturday, June 24, 2023

Time: 1:00 pm

Location: Midway Baptist Church
1670 Mt. Jefferson Road
West Jefferson, NC 28694



Ashe County & Surrounds Events

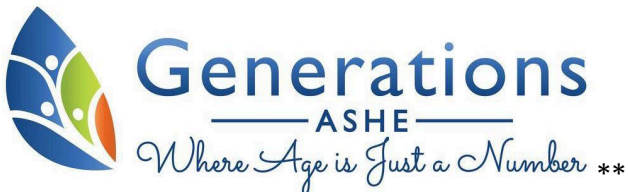
Trout Season Opens - N.C. Wildlife Resources Commission will open approximately 1,000 miles of **Hatchery Supported Trout Waters** at **7 a.m. on April 1.** The season will run through **Feb. 29, 2024.** The Wildlife Commission has posted the full Hatchery Supported Trout Waters **stocking schedule** on its website to give trout anglers opportunities to plan fishing trips in advance. The schedule is searchable by county and month and provides information on what days each water is being stocked.

Hatchery Supported Trout Waters, which are marked by green-and-white signs, have been closed since Feb. 28 for stocking. Most trout are stocked April through June, with a few streams selectively stocked in July.

Hatchery Supported Trout Waters are open to public fishing; however, many of those miles are privately owned so officials with the Wildlife Commission urge anglers to respect the property they are fishing on. Report wildlife violations by calling 800-662-7137.



ALPO Board VP – Chris Roten and his catch in Ashe Lake (Summer 2022).



FREE COMMUNITY YOGA CLASSES **

Every Thursday, starting March 16
 Class Times: 9:00 - 10:00am and 10:30 - 11:30am
 Location: Generations Ashe
 Level: The classes are VERY GENTLE and appropriate for everybody.



2023 DOLLAR DAYS: Grandfather Mountain extends a special "Dollar Days" rate of \$5 per person during the month of April to those who live or work in Allegheny, Ashe, Avery, Mitchell, Watauga or Wilkes counties, along with their guests traveling in the same vehicle. Students are also eligible for the discount. A limited number of Dollar Days tickets will be available each day, in addition to general admission tickets. For more information or assistance, please call 828-733-4337 or <https://grandfather.com>

It's almost that time again!!!! **EGG TOSS with the Sheriff!** Come out for a great time! Sat. April 8th at 11am at the Ashe County Sheriffs Office.

EGG TOSS
ALL Age Groups
 Saturday, April 8th @ 11am
 Location: Ashe County Sheriff's Office

An egg toss is a competition where you and a partner toss an egg to each other. If your partner doesn't catch the egg, you're out! Everyone else takes a step back. The winners of each group will get to...
EGG THE SHERIFF!!!

MAY 6TH. 10AM-5PM
FRIED APPLE PIE FESTIVAL
 SPARTA, NC
 Free Admission
 Alleghany County Fairgrounds
 1375 US Hwy 21 N. Sparta, NC 336.372.5473

FRIED APPLE PIE CONTEST
KIDS ACTIVITIES **FOOD TRUCKS**
ARTS & CRAFTS VENDORS **MUSIC**

Sponsored by
 Winter Wood FARM
 SkyLine SkyBest 100.9 WIFM Alleghany News FOXFIRE REALTY

Come and spend a weekend with us.



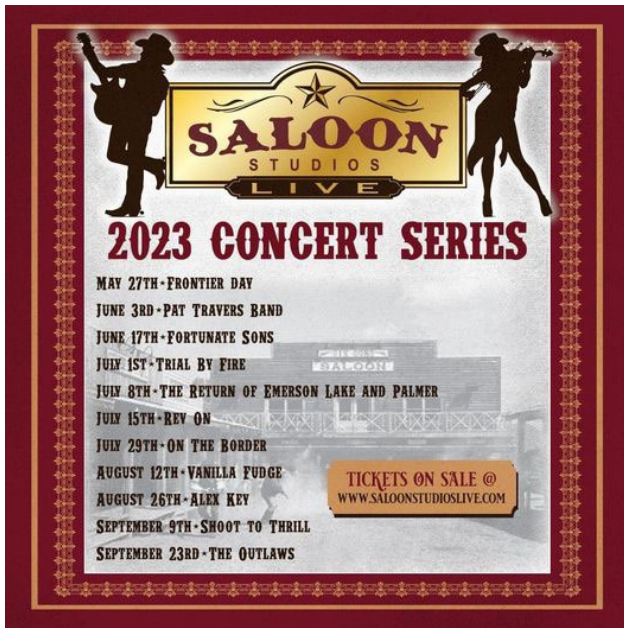
FRIENDS CORNER in the library has lots of great-looking and varied cookbooks on sale for \$1 each! Sale lasts until the last book is sold!

The West Jefferson Community Partnership announces the 2023 Summer Backstreet Concert lineup. These free concerts are held on the Backstreet in downtown WJ.

West Jefferson Community Partnership Presents the 12th Annual
BackStreet Park Summer Concerts
 FREE • MUSIC IN THE PARK • ENJOY THE OUTDOORS

May 26 Rock Bottom Bluegrass Band	Aug. 4 Special Trail Towns Double Concert!
June 2 Wayne Henderson and Friends	4:00 Steve Lewis & Friends
June 16 The King Bees	6:15 Cane Mill Road
June 23 Crooked Road Ramblers	Aug. 18 Lucky Strikes Trio
July 7 Trevor McKenzie & Jackson Cunningham	Aug. 25 The Mountain Laurels
July 21 Ruby Goose	Sept. 1 Cabin Creek Band
July 28 Sheets Family Band	

5:30 - 7:00pm www.VisitWestJefferson.org
 Downtown West Jefferson on the Backstreet



Starting with **FRONTIER DAY** - a full day of cowboy gun fights, authentic cowboy music, and demonstrations of 19th Century crafts, Saturday, May 27, Saloon Studios opens the 2023 Summer line-up. Gates will open at 10 a.m. and events run through 3 p.m. Tickets are \$20 if purchased online at <https://saloonstudioslive.com> and \$25 at the gate. Children under 12 have free admission.

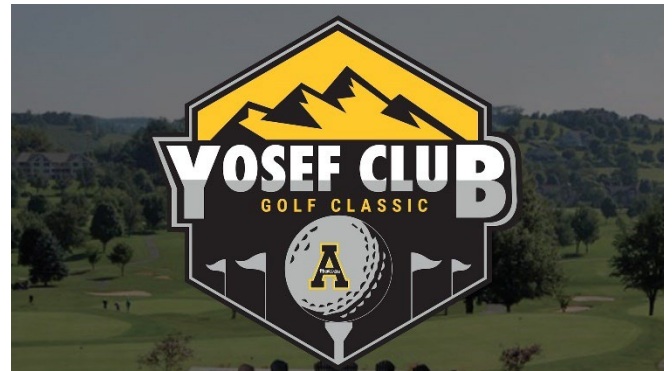


TODD 2023 SUMMER CONCERT SERIES All concerts take place in Cook Memorial Park, downtown Todd. Here's the schedule:

- ❖ June 24 Burnette Sisters, 6-8:00 pm
- ❖ July 4 King Bees, 11:30 am (after the Liberty Parade)
- ❖ July 15 Lucky Strikes, 6-8:00 pm
- ❖ July 29 Trailblazers, 6-8:00 pm
- ❖ August 12 Wayne Henderson, 6-8:00 pm



ASHE BASH 2023 - Free concert on Saturday May 6, @ 7PM featuring THE STEEL WHEELS and Presley Barker!! Free Shuttles & Parking! Food Trucks available on site. 150 Government Circle, Jefferson. Family-Friendly Event, No Alcohol, No pets.



App State's annual **YOSEF CLUB GOLF CLASSIC** is scheduled for Friday, May 19, at Jefferson Landing Club in Jefferson. The event provides scholarship support to App State student-athletes. The cost is \$900 per four-person team or \$250 for individuals. Exclusive silent auction items will also be available. There will be multiple games at select holes as well as mulligans available for purchase.

INFO: goapp.st/YosefClubGolf

REGISTER: goapp.st/YCGCRegistration



CHRISTMAS IN JULY opens on June 30, 2023, This marks its 35th year for Ashe County's longest running festival. The festival received the designation of "Finest Festival" by Carolina Country magazine in 2022. This year, it promises to be one to remember. For more information and updates visit www.christmasinjulyfestival.com. Make plans to visit Downtown West Jefferson on June 30 and July 1, 2023.



BLUE RIDGE BRUTAL BIKE RIDE - Saturday, August 19, 2023, 8am to 3pm. The Blue Ridge Brutal is not for the faint hearted. All of the

Rides - 100, 70, 50 or 25 miles, take you through the Blue Ridge mountains and over many hills. Registration for the Blue Ridge Brutal will open March 1st 2023. www.blueridgebrutal.org



THE INAUGURAL HELLBENDER BIKE RIDE will take place on Saturday September 9th, 2023. Riders can choose to participate in either the 30-mile or 70-mile route, or the Pond Mountain Challenge, each route starts and ends in Historic Downtown Lansing, NC. Each route will take you through the backroads of the most scenic part of Ashe County, North Carolina. Riders will weave through the hills and hollars, past old tobacco barns and homesteads rich with history. With both paved and gravel roads, the terrain will be challenging but rewarding. To register, head over to hellbenderbikeride.org

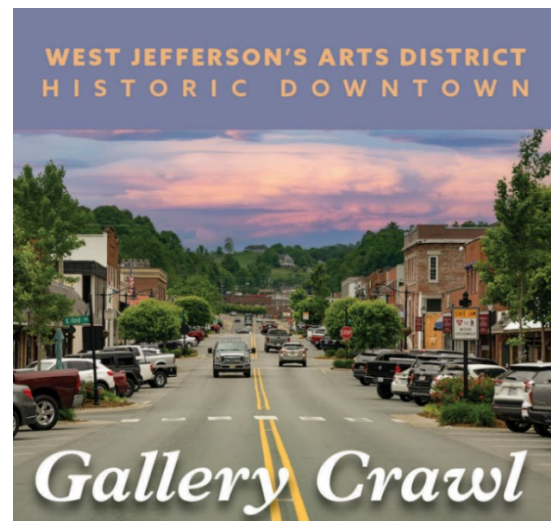


5th Annual Craft Beer, Wine & Cider Tasting Festival
Saturday, October 7, 2023

The 5th Annual Stomp and Brew Craft Beer, Wine, Cider, Mead, and Spirits Festival in downtown West Jefferson, NC. This event celebrates the talented brewers, vintners, and distillers in the northwest North Carolina region with a focus on the process of creating craft beer, wine, and ciders. Proceeds go to support "Shoes for Kids" a local organization that provides shoes for children in need here in Ashe County, NC. Enjoy live music, food trucks, local craft vendors, and a classic car show. This event is pet-friendly and 21 or older. Tickets are available by visiting www.StompandBrew.com.

Ongoing Ashe County Events

ASHE COUNTY FARMER'S MARKET - Starting April 8 Saturdays 8am -1pm Thru October 28.



GALLERY CRAWL -Gallery Crawls are back! The Ashe County Arts Council announces the first crawl of the season on Friday, June 10 from 5 pm - 7 pm in Downtown West Jefferson. Crawls will continue July-October every second Friday of the month.



LANSING FARMERS MARKET -
Fridays 1pm - 5pm April thru
October at the Creeper Trail in
Lansing.

KOOL NIGHTS & HOT RODS CRUISE-IN - Blue Ridge
Midnight Runners announce their 2023 Kool Nites and Hot
Rods Cruise-In dated for 2023. April 22, May 27, June 17,
July 15, Aug 19, Sept 23, and Oct 21. 4pm - 8pm Downtown
W. Jefferson. For more info call (336) 977-1989.



Ashe County Animal Control is
holding their 7th spay/neuter
transport clinic on April 12th to the
Foothills spay/neuter clinic in
Hickory! Please contact Animal
Control for more information.



ALPO is operated
by Ashe Lake
owners for Ashe
Lake owners.
We welcome the
opportunity to
hear your
feedback,
concerns, and
issues to improve
our community.