

# Ashe Lake Property Owners NEWSLETTER

August / September 2022

## Community Changes and Improvements

### Roads and Safety

Two mirrors were purchased by ALPO and installed at the intersections of Holiday Lane & Chestnut Drive and at the intersection of Lakeside Drive & Pritchard Drive. We hope these mirrors will make seeing oncoming traffic easier around these blind spots.

Additional reflectors and two "Slow" signs were also installed at the railing along both ends of the Lake. Remember our speed limit at Ashe Lake is 15 mph.



New mirrors on Holiday Lane/Chestnut and Lakeside/Pritchard Dr.

### Water Leak at Dawnview Drive Water Tank

Carolina Water Service, who provides water for some residences located within Ashe Lake, has experienced a major leak from their water tank located on Dawnview Drive. If your home is serviced by this tank, you will have heard from the directly regarding the situation. They have been

working round the clock to discover the source of the leak so that it can be fixed. If you see any wet spots let us know so we can pass on the information. To date Carolina Water Company has brought in 12 tankers of water to supply the affected homes.

Rick has retired from Carolina Water Service. We thank him for his 20+ years of service to the Ashe Lake Community.

### Lakefront Benches and Picnic Tables

New benches have been installed at Ashe Lake at the dock area and along Lakeside Drive to provide our residents with spots to rest and take in the views. Both the Smith family and the Morris family have generously donated picnic tables that will be located by the waterfall and the dock area. The existing picnic table donated by the Perry family was moved and now provides the perfect spot for a morning cup of coffee, or a quick lunch, all while enjoying unobstructed views of Lake.



Chris Roten (VP) working on the new bench area and finished product.



New picnic tables donated by Smith family and Morris family. New benches by Dock.

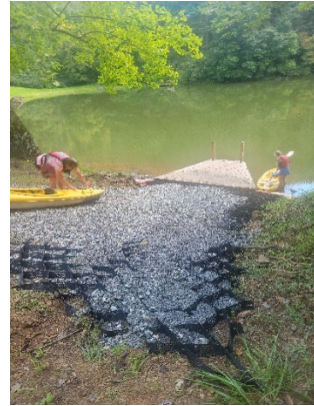


Work in progress to repair dock access ramp.

### Repairs to the Dock Access Ramp and New Parking

Due to heavy rainfall, the access ramp to the community dock has been in need of repairs for quite some time. Our volunteers filled in the voids, installed geo-grid fabric to prevent the new gravel from washing away, and placed gravel along the bank at the dock. New safety railing will also be added to help maneuver the slope.

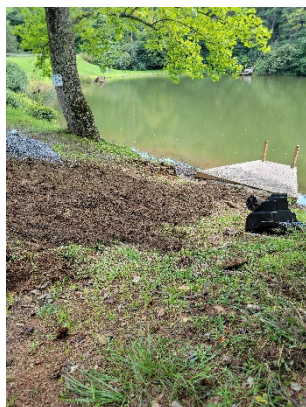
Our volunteers also relocated the kayak rack from Willow Lane / Spillway to make room for parking. The two kayak racks are now located on Lakeside Drive. This along with some land clearing, will allow us to provide 6 angled parking spaces on the North side of Willow Lane, against lots 50 and 51. This new parking configuration leaves plenty of room on Willow Lane/Spillway for emergency access and allows our property owners with easier parking. We hope to have this project completed in the next couple of weeks.



Residents Barbara and Bonnie trying out the improved ramp. Finishing touches on the ramp.



Finished dock access ramp.



Dock access ramp before work started, and work in progress.



New kayak rack spot and new benches.



Residents Ken and Joe enjoying some fishing.

ALPO will be working on expanding our community dock and making upgrades that will make it easier to use. We are scheduling this work for Fall so as not to disrupt the summer enjoyment of the dock. Keep your eyes peeled for more improvements!

As always when using the parking area and dock remember to be respectful of our neighbors, and always pick up any trash or litter.

### **Ashe Lake Loop**

Do you enjoy getting your exercise around Ashe Lake but never know just how far you've gone? Welcome to the Ashe Lake Loop. New mile markers will be installed, starting at the Community dock, will allow you to track a 2-mile loop. Starting at the dock towards the waterfall, mile markers are located at ¼ mile increments, for a 2-mile loop (1 mile each way). Starting at the dock to the mailboxes on Nettle knob, the distance is ½ mile each way, for a 1-mile loop. Grab a neighbor and get some steps in while we all enjoy the beauty that Ashe Lake offers.

We are currently working on establishing walking trails along the roads leading to scenic spots and points of interest. We hope to include our tree stands, waterfalls, beautiful foliage and wildflowers, and spots for viewing our native wildlife. If you know of any hidden gems let us know and we will try to include them. Soak up some nature today.

### **Association Dues**

**We are running a membership drive. If you would like to discuss your dues and join your neighbors in funding our wonderful community reach out to us, and we will work with you to bring you current.**

### **Road Repairs and Maintenance**

Road repairs and maintenance have been ongoing throughout the summer with our road contractor concentrating on getting the main roads winter ready. Although the recent rains have caused havoc on our roadways, we are working on getting these roads repaired. New water-breaks will be installed at trouble spots to prevent run-off, and culverts will be repaired as needed.



Rain runoff from Maple Dr. New Gravel on Freedom Trail.

### **Online Dues Payment**

Online payment is here!! Beginning with the 2023 billing you will be able to make your ALPO dues payments online. We feel this will make payment of dues an easier process for some, rather than mailing in checks.

### **Updated Contact Information**

Has your mailing address, phone number or email address recently changed? Shoot us an email so we can update our records and keep you in the loop of happenings in our community. Please direct any questions, concerns, or requests to [AsheLakePOA@gmail.com](mailto:AsheLakePOA@gmail.com)

### **Deer Mating Season**

According to the North Carolina Wildlife Resource Commission Deer mating season runs from October through December. This is the time of year when deer are most active and when most deer-related car wrecks take place, especially during the night. We urge our resident drivers to take extra care to drive safely thru our community.

## Ashe County Trash Stickers

Starting in the Winter of 2023, the Ashe County Environmental Services Department will be requiring a sticker for vehicles entering and using a convenience center. Have questions about how this system will work? [trashstickers@ashecountygov.com](mailto:trashstickers@ashecountygov.com) or 336-846-5554.

## Gardening

Ashe County is within USDA hardiness zones 6a and 6b. You probably won't find many starter vegetables; however, many cool-season vegetables seeds can be planted directly in the garden. The goal is to get the seedlings planted outdoors in time to take advantage of the last days of summer warmth. Here are a few hardy vegetables that can tolerate frosty temperatures as low as 25 to 28 F.

Spinach   Leeks   Radishes  
Mustard greens   Turnips   Collard greens

Some vegetables, considered semi-hardy, can tolerate temperatures of 29 to 32 F. These should be planted a bit earlier than the hardy vegetables listed above.

Beets   Lettuce   Carrots   Swiss chard   Celery  
Chinese cabbage   Endive   Rutabaga   Irish potatoes

**Our first Fall Frost date is October 1.**

## Ashe Lake Events

### Summer BBQ-Picnic

Our summer BBQ-Picnic was held on Saturday, September 3, and it was a smashing success. Over 50+ Ashe Lake property owners and their families joined us for some good eats. We would like to thank all the attendees for taking time to join us in getting to know your neighbors and community. See photos at end of newsletter!

ALPO hopes to facilitate more community events like this in the future. Stay tuned for our next community event!

### Clean-Up Day

Our First Clean-Up Day of 2022 is scheduled for Saturday October 1st. Bring your gloves and sunscreen. We will provide garbage bags and refreshments. Meet-up at Community Dock at 10am. We will be focusing on cleaning up Willow Lane parking area and Lakeside Drive around the Southern end of the Lake.

## Ashe County Events

Ashe County Farmer's Market - Saturdays 8am -1pm Thru October 29.

**On the Same Page Literary Festival – September 13 – 17. Ashe Arts Center.**

Lansing Farmers Market – Fridays 1pm – 5pm Thru October 28 at the Creeper Trail in Lansing.

**Olde Time Antiques Fair – September 16-17 North Jefferson Ave in Downtown W Jefferson.**

Gallery Crawl – 2<sup>nd</sup> Friday of each month, 5pm – 7pm thru December, Downtown W. Jefferson.

**Stomp and Brew – Sat, October 1, 12pm – 4pm at East Main Street Lot, Downtown W. Jefferson.**

Kool Nights & Hot Rods Cruise in – 3<sup>rd</sup> Sat. of each month, 4pm – 8pm thru October 15, Downtown W. Jefferson.

**Ashe County Holiday Parade – November 19 3pm – 5pm Downtown W. Jefferson.**



**PRIVATE COMMUNITY &  
WILDLIFE SANCTUARY**

ALPO is operated by Ashe Lake owners for Ashe Lake owners.  
We welcome the opportunity to hear your feedback,  
concerns, and issues to improve our community.

[AsheLakePOA@gmail.com](mailto:AsheLakePOA@gmail.com)



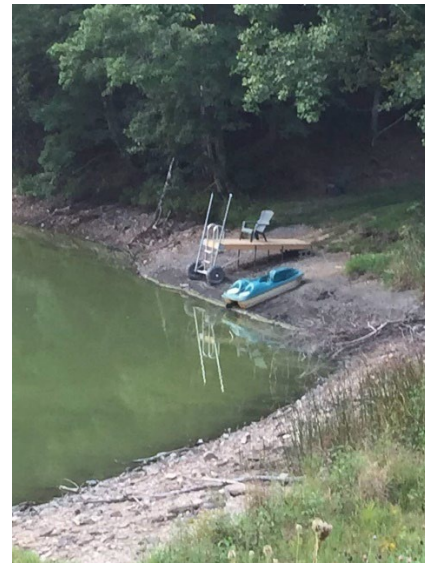
**Summer 2022 BBQ - Picnic  
Saturday, September 3, 2022**



Ashe Lake residents enjoying the beautiful day.



Refreshments donated by Hollis Fedrick.



Reminder of how far this area has come - Ashe Lake community dock in 2015.



Thank you, Mike and Bibi, for donating the burgers and hot dogs and Mike for handling the grilling!

**If you have photos of Saturday's BBQ - Picnic, please email them to [ashelakepoa@gmail.com](mailto:ashelakepoa@gmail.com) so that we may include them in our webpage.**

**Special Thanks to Hollis Fedrick for bringing our community together.**



Ashe Lake residents enjoying the beautiful day.