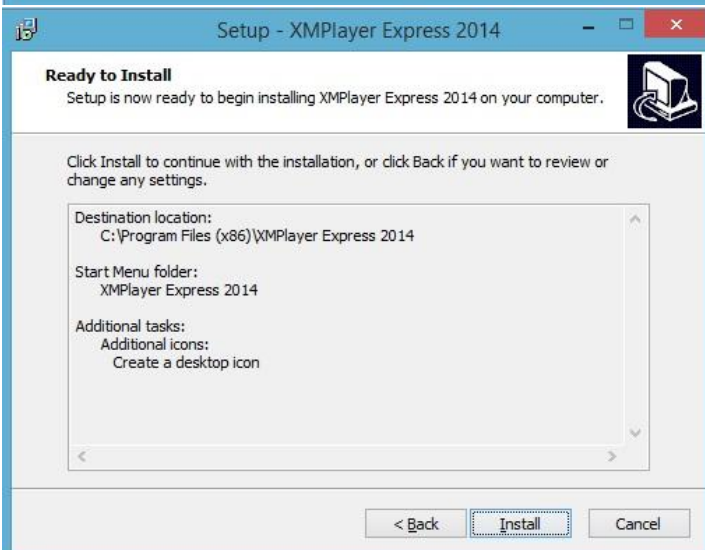
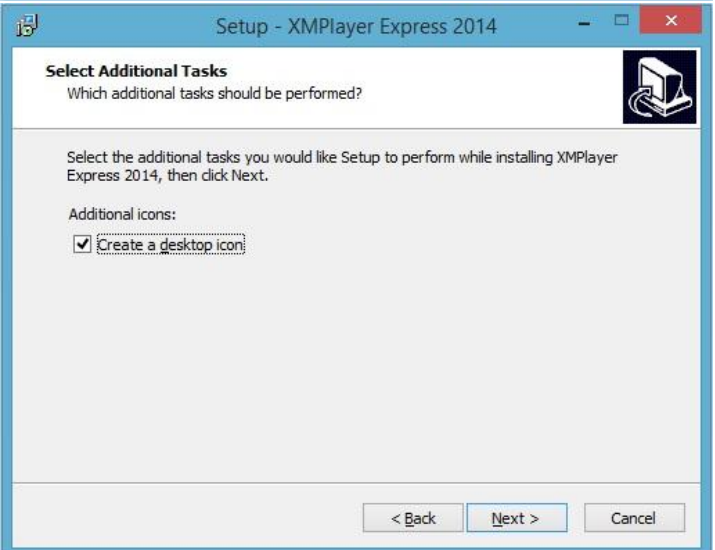
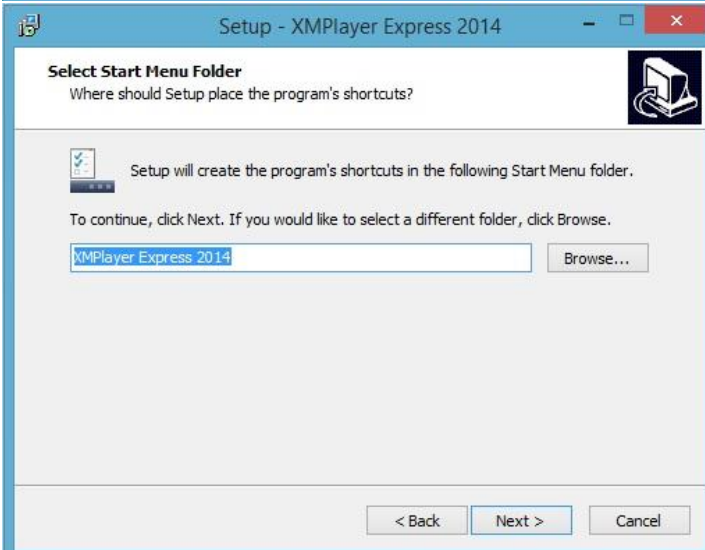
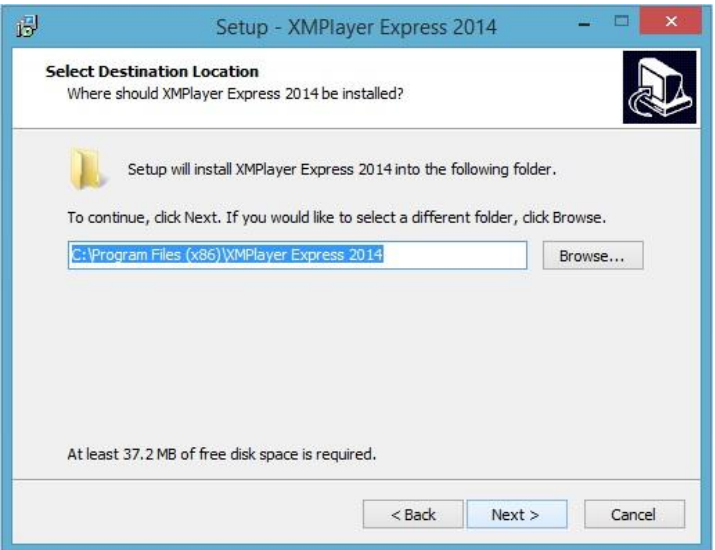
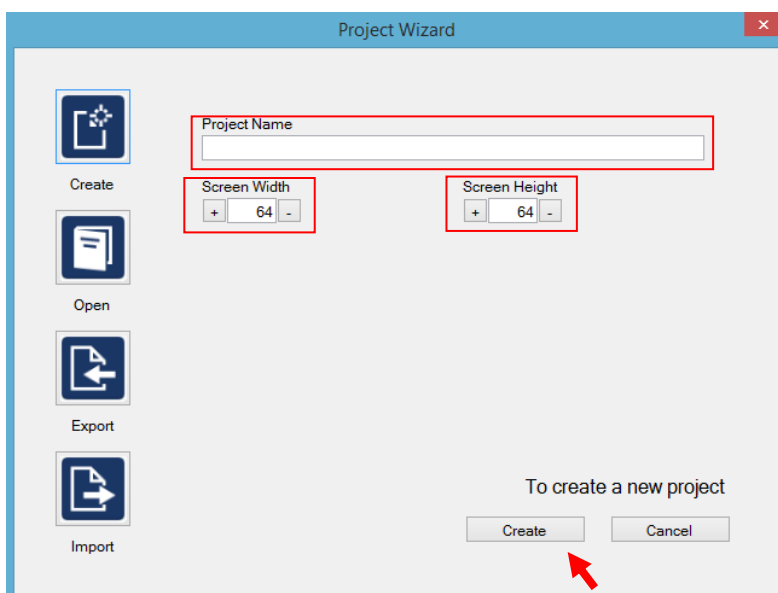
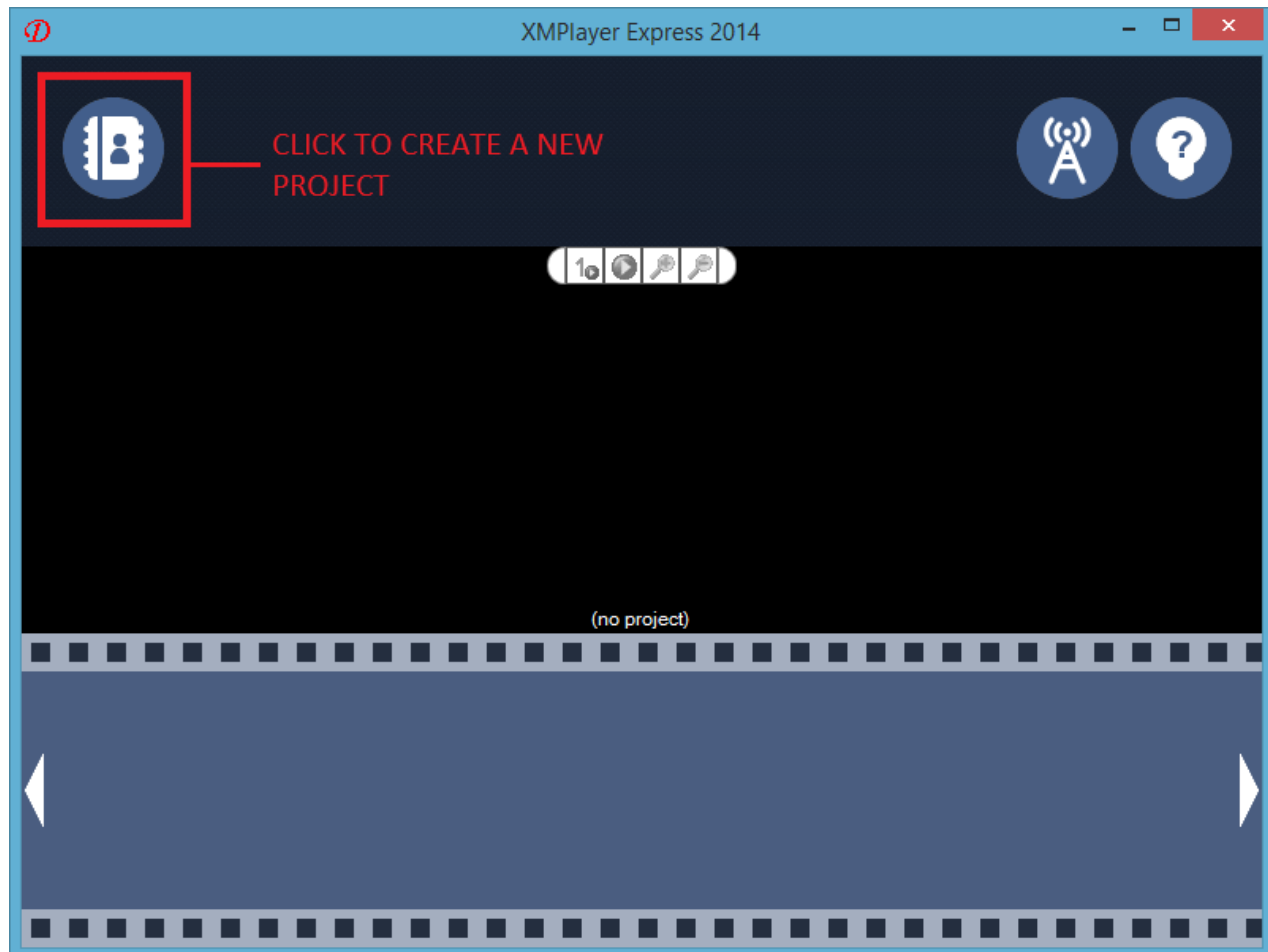


Installation Process



CREATING A NEW PROJECT

After you run the program, click on "Project" icon on top left corner of the screen.



Before you create the new project, be sure to put proper screen size on width and height (Pixels). You can also put the name of the project, it's optional.

When finished click on

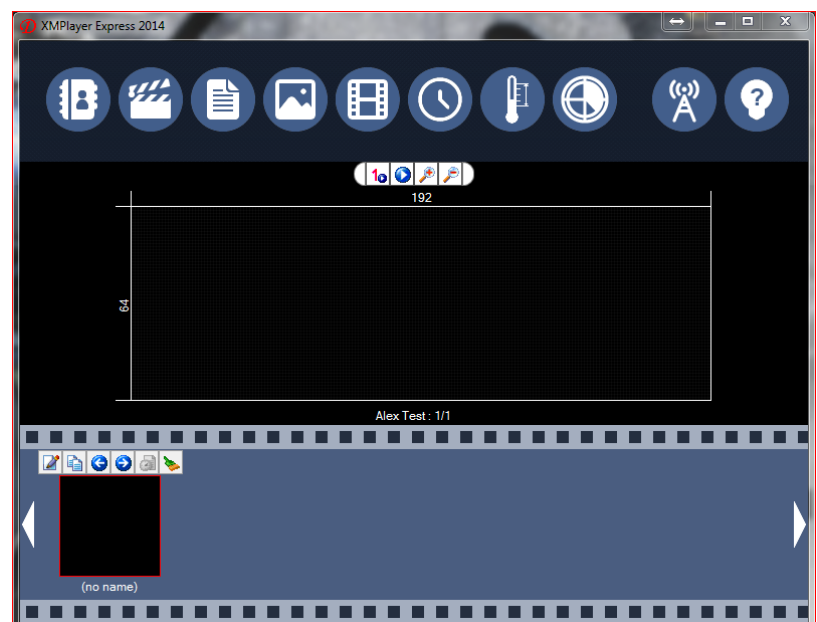
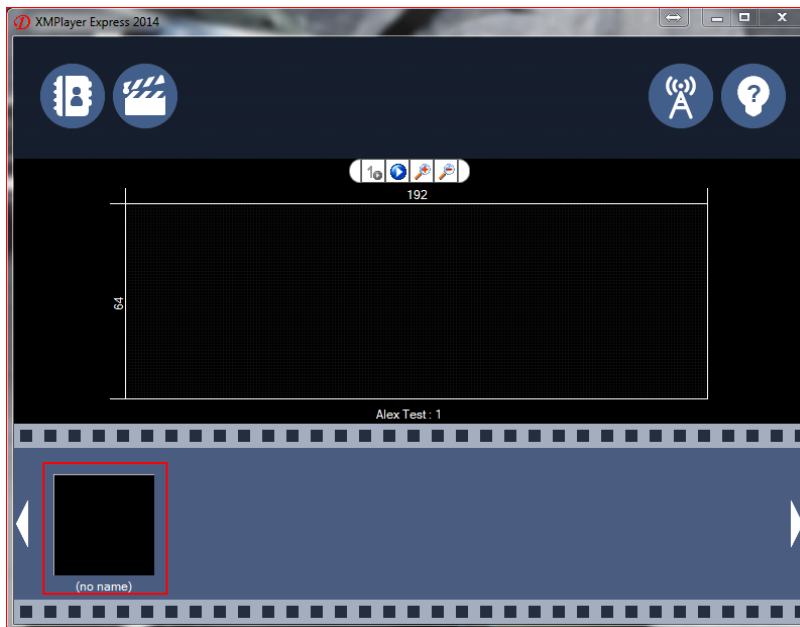
Create

Creating a Slide



1. You will only have 1 slide opened when you create a new project.

2. To display all the options Click on the slide on the bottom left corner.



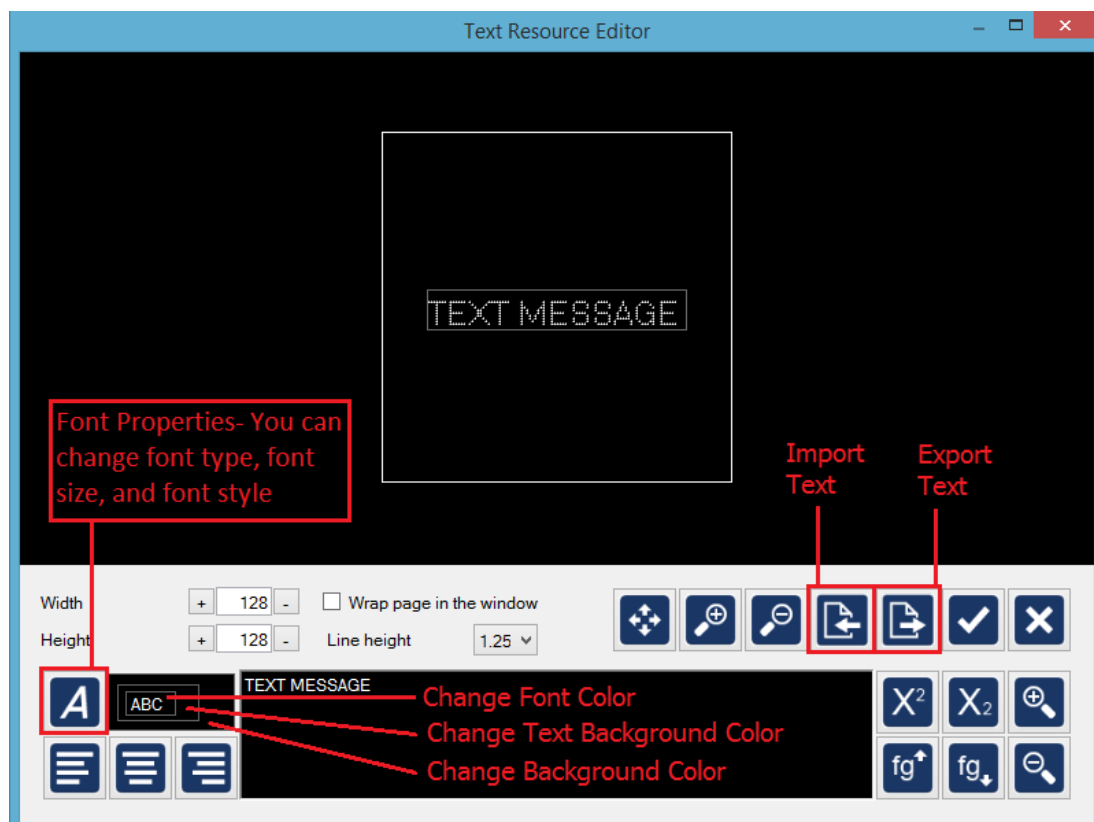
Where's the Save button???
Don't worry XMPloyer Express saves
all your hard work automatically.

Adding Text



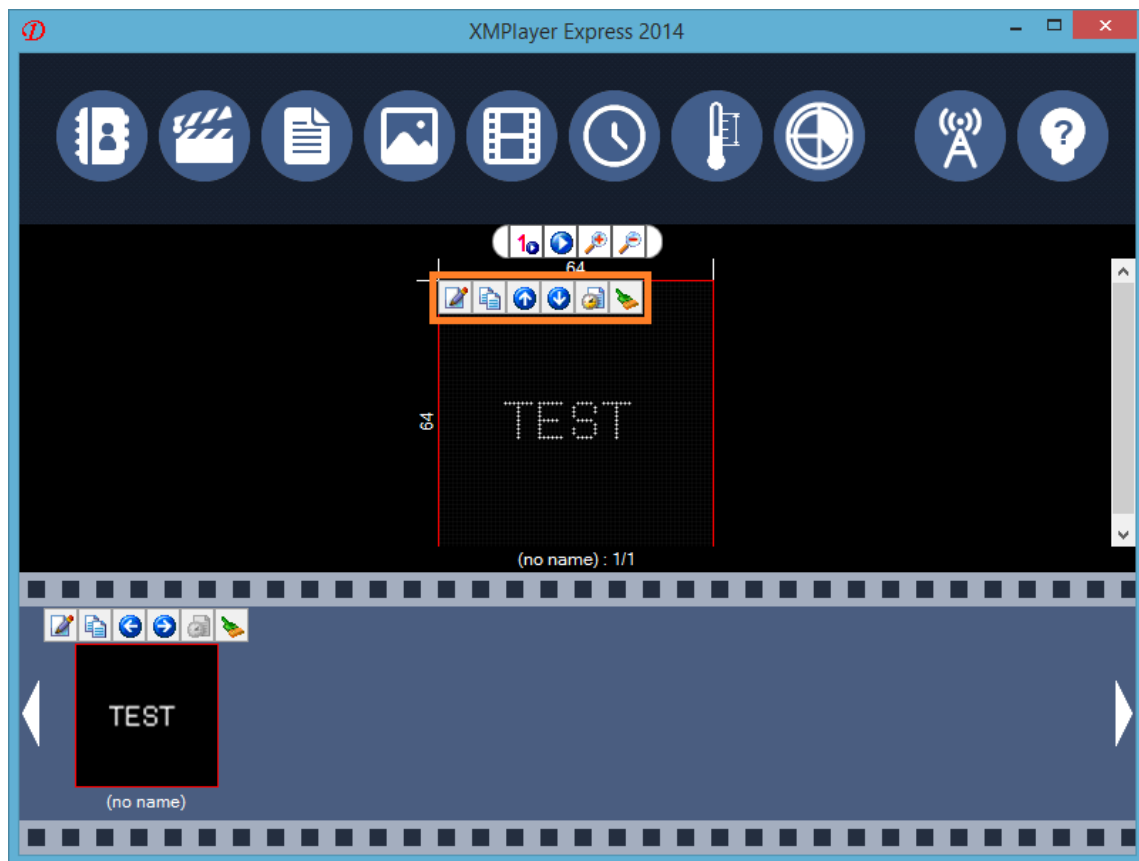
To input a text message click on the text circle. When the new window open's up it will look like the picture shown below.

Input a Single Text or Multi-Line text
(Only for Multi-Line) Push the return/enter key on your keyboard.



You can Adjust: The font Size, Type, Style, Color and Background color. Type in your desired message and Proceed.

Description



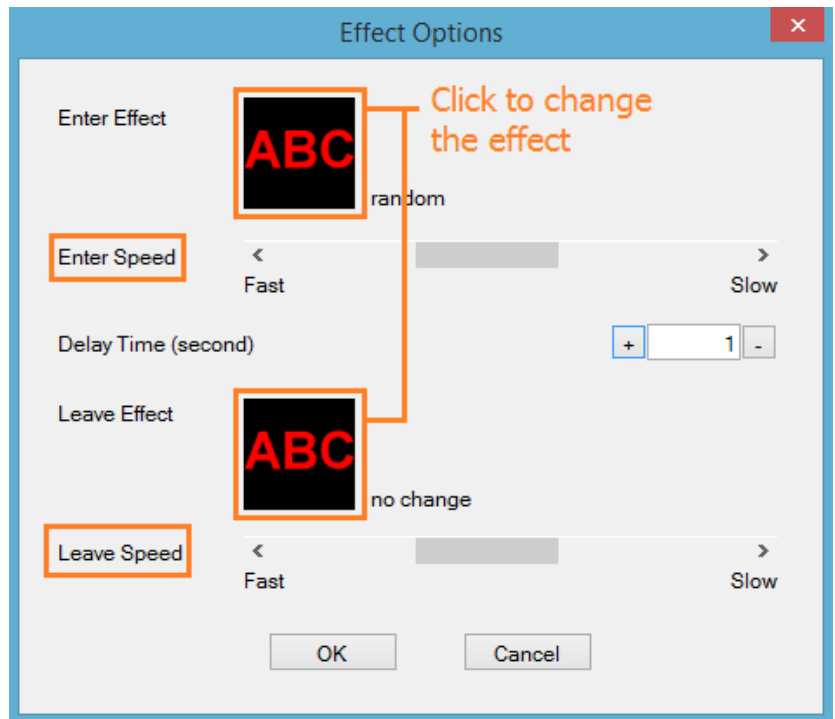
Content Properties



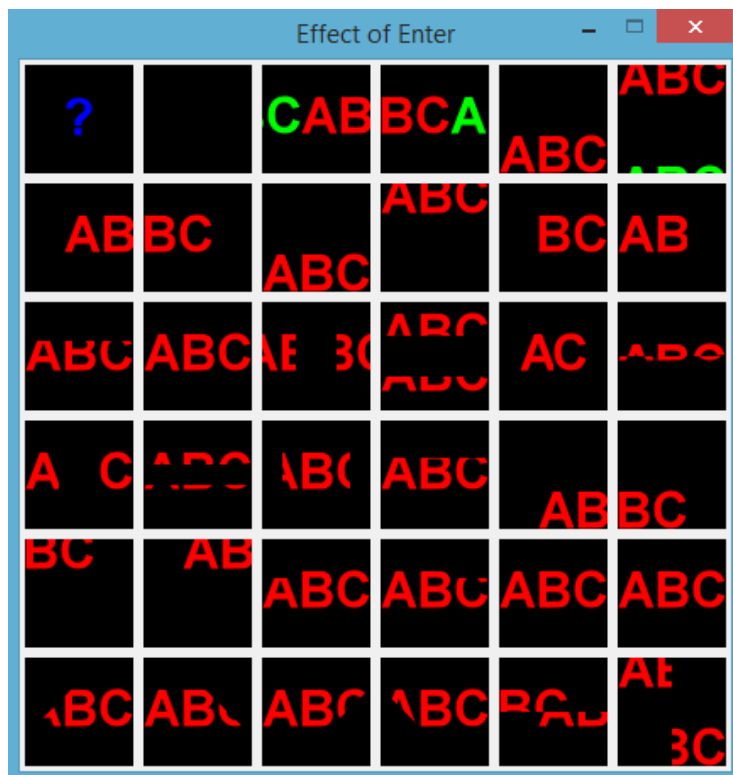
1. **Edit** – You can go into text resource center to modify text contents
2. **Duplicate** – It will duplicate the selected contents or slide.
3. **Move up** – Current selected content will go on upper layer in a slide
4. **Move down** – Current selected content will go on lower layer in a slide
5. **Effect** – You can put effect in current selected content.
6. **Delete** – Delete selected content.

Effects

Note: When the text message is insert it will not have any effect that is the default setting of XMPlayer Express.



Preview window for every effect is displayed.

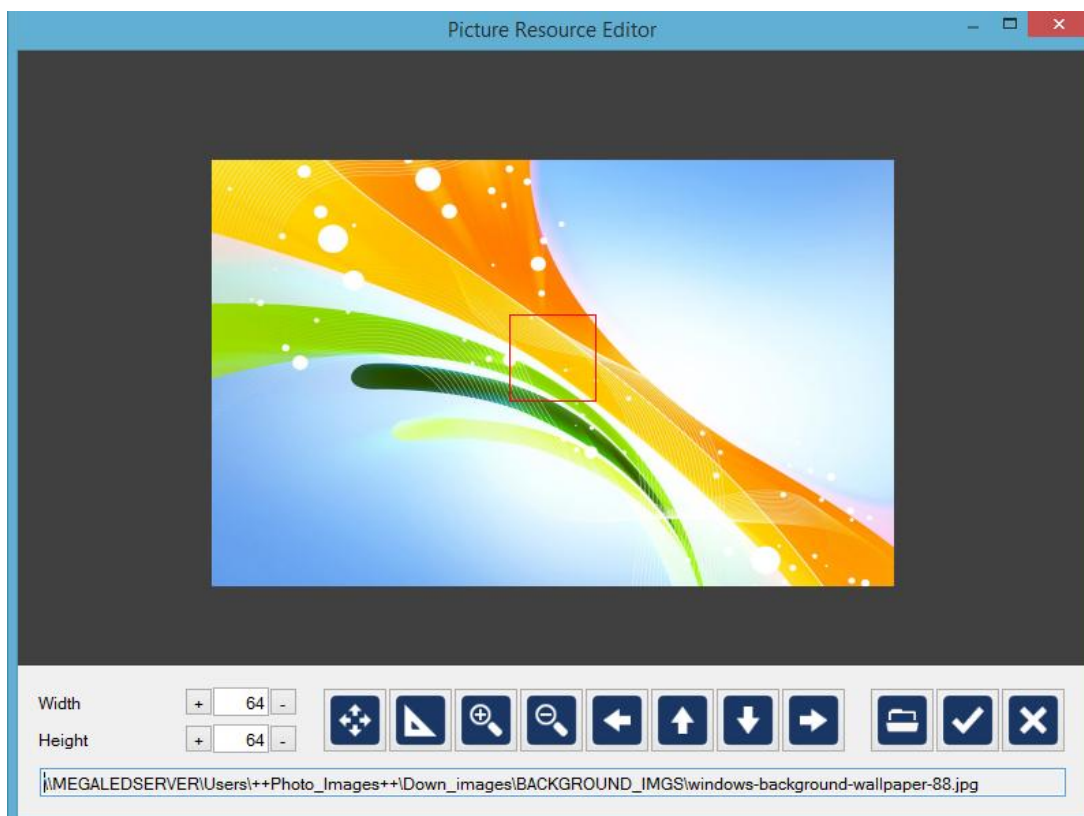


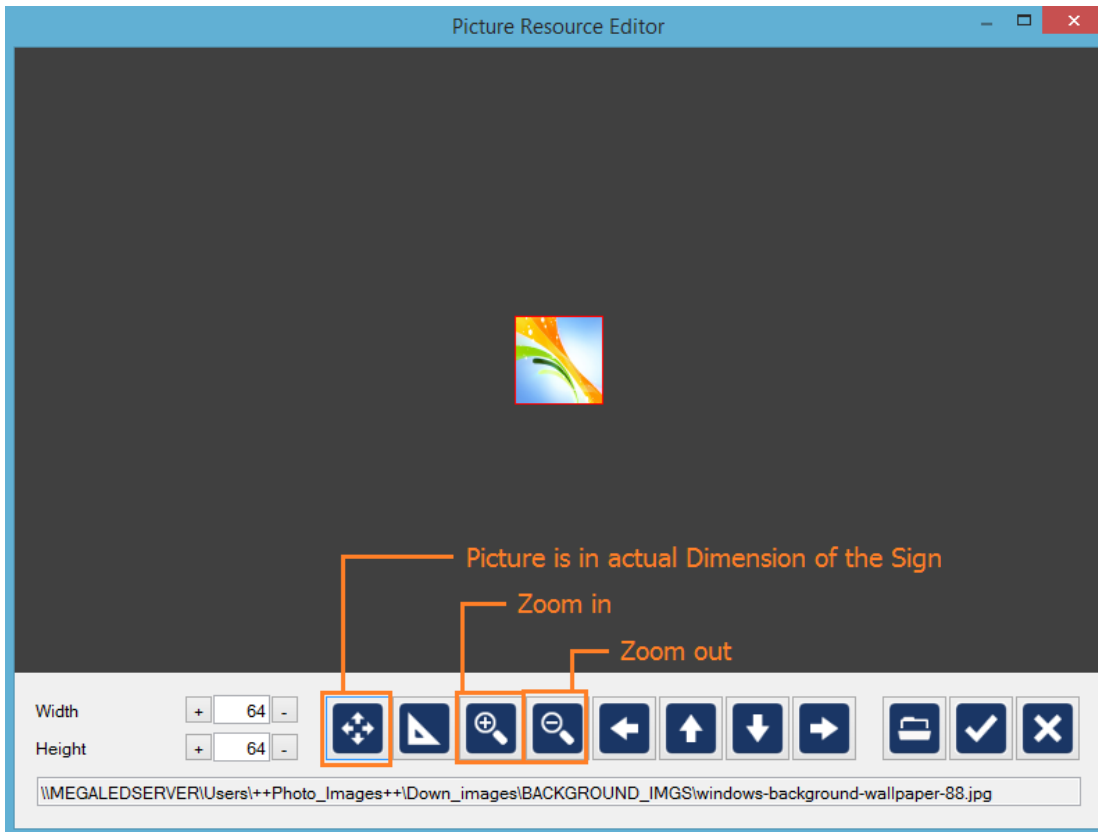
PICTURE



When you click on “Picture” tab, it will lead you to Picture Resource Editor Page.

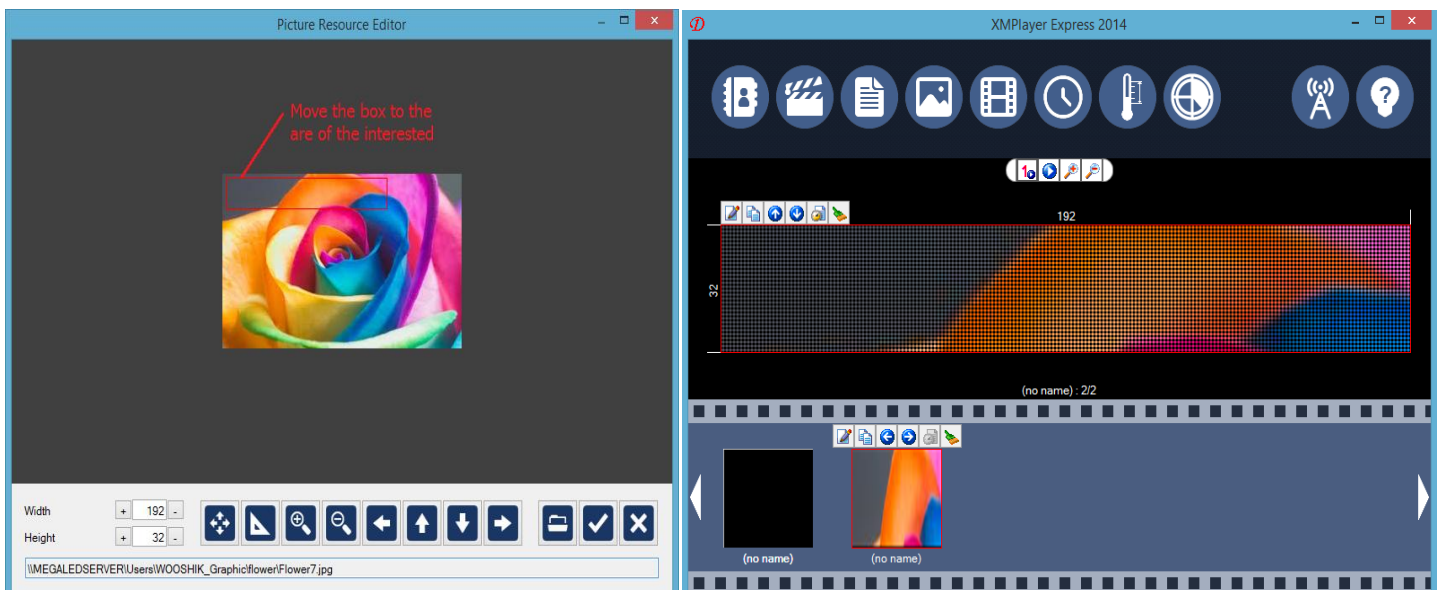
Original size of the picture





When you put a picture that is larger than actual pixel size, click “size to fit” button to shrink it to the actual pixel size.

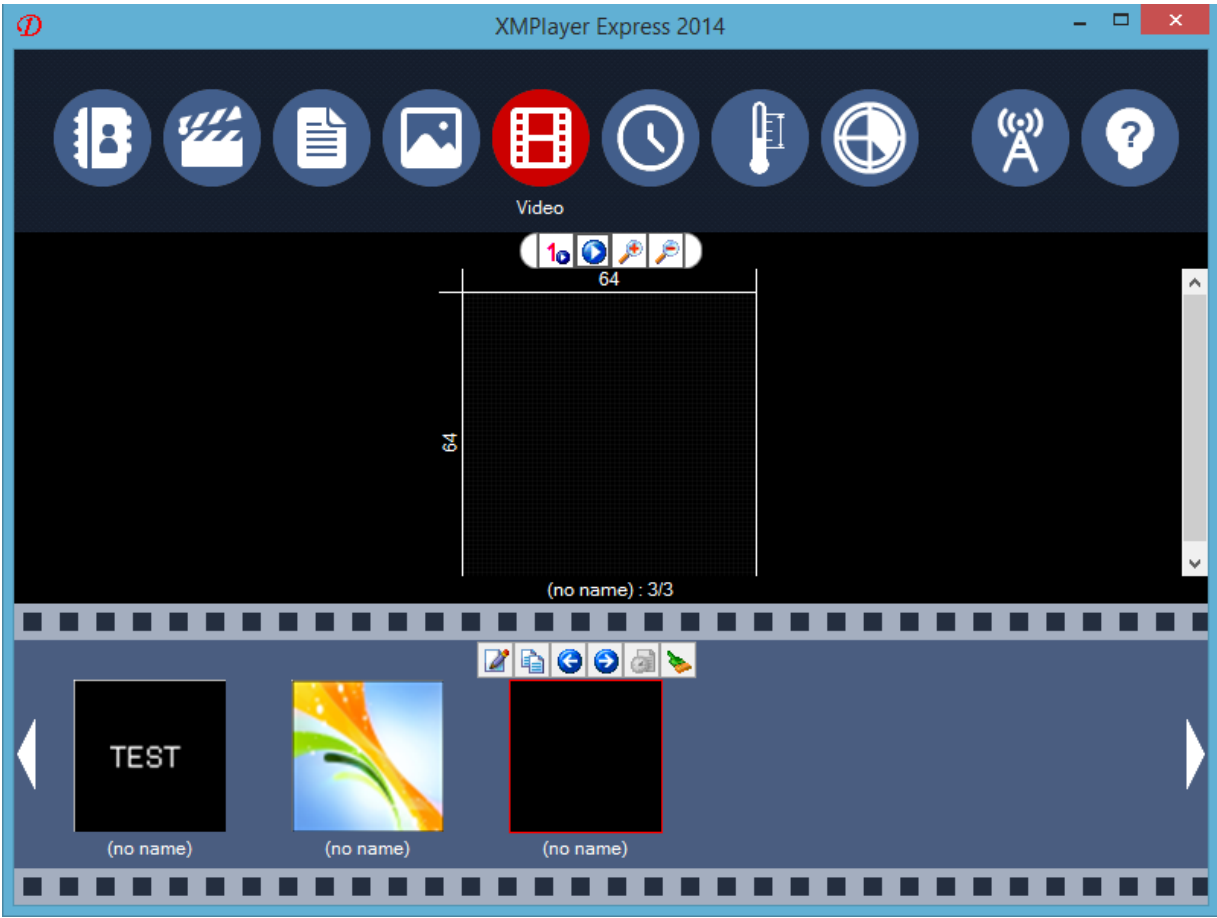
If you want to show partial part of the picture, you can move red box to area of the interested.

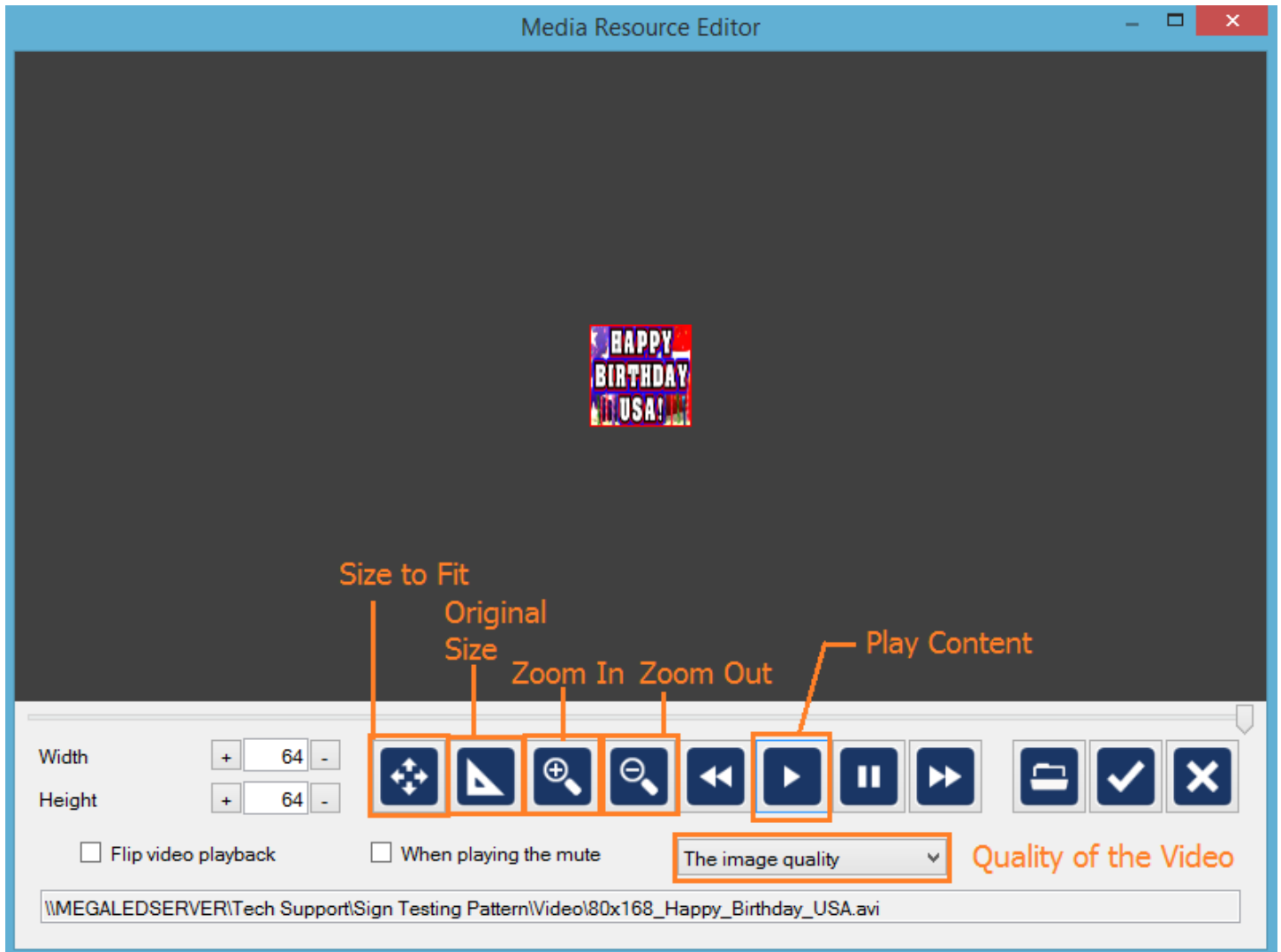


Video



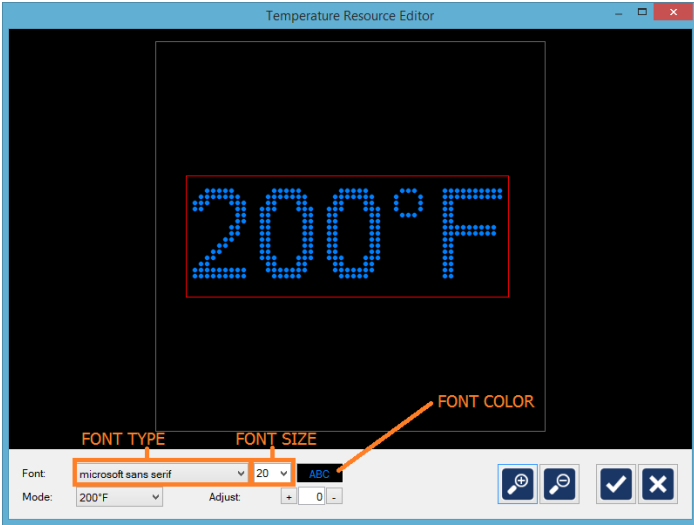
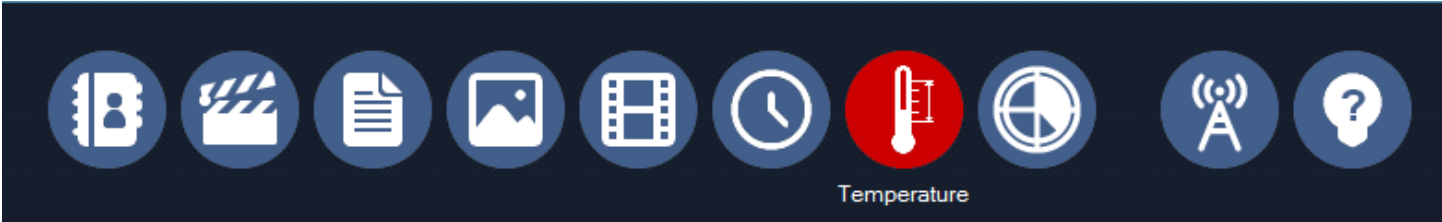
When you click on the “Video” tab, it will lead you to Media Resource Editor Page.



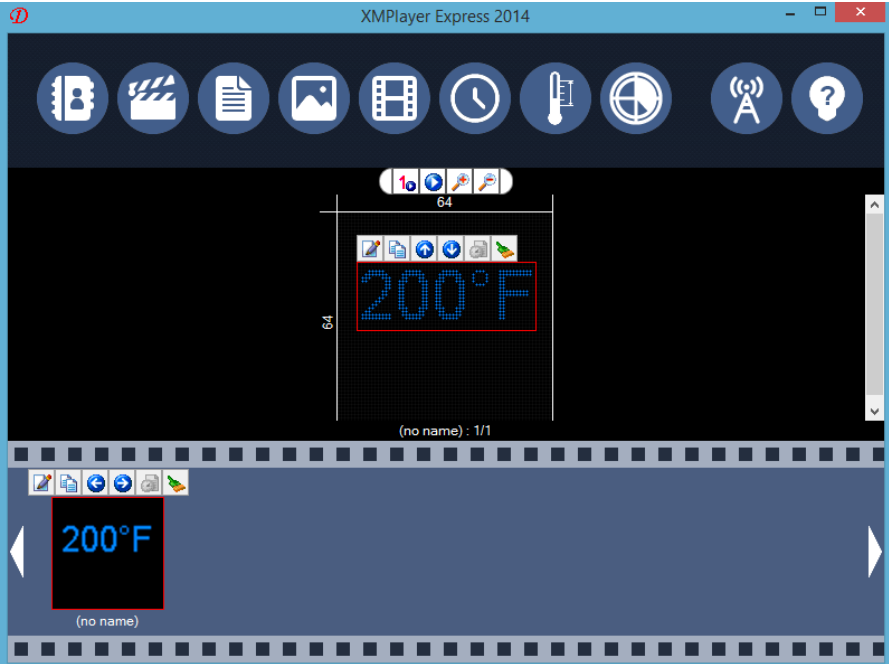


In this Media Resource Editor, you can add multimedia files such as (avi, mp4, swf, wmv, mov). You can adjust the size of the content to actual pixel size of the sign by clicking “Size to fit” button.

Temperature



Temperature: It displays temperature around the sign. Temperature sensor is really sensitive, we recommend you to put the temperature sensor into the area where it is not exposed under the direct sun light to have proper temperature displayed.

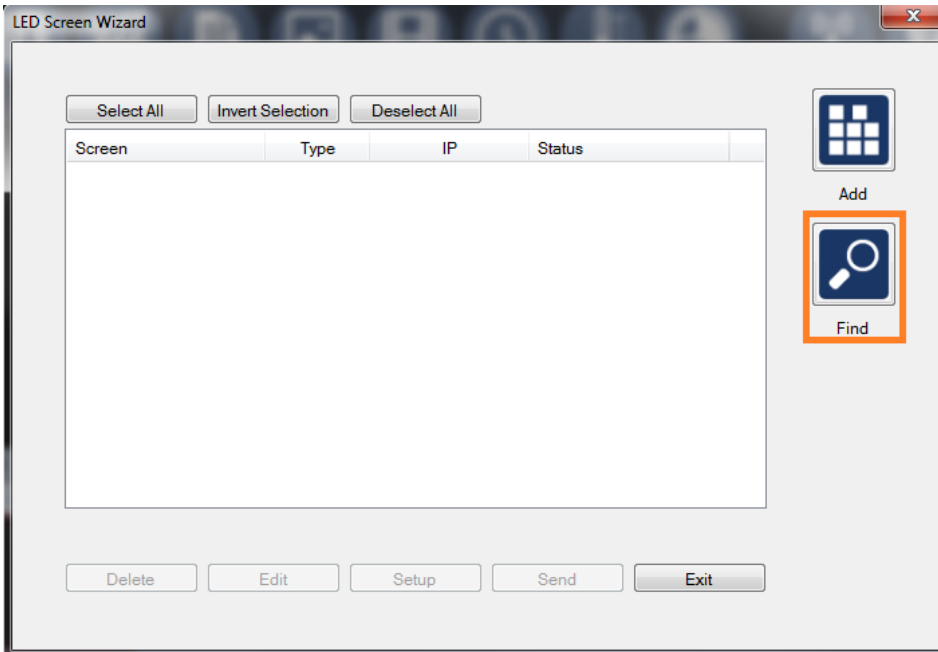


Click on:



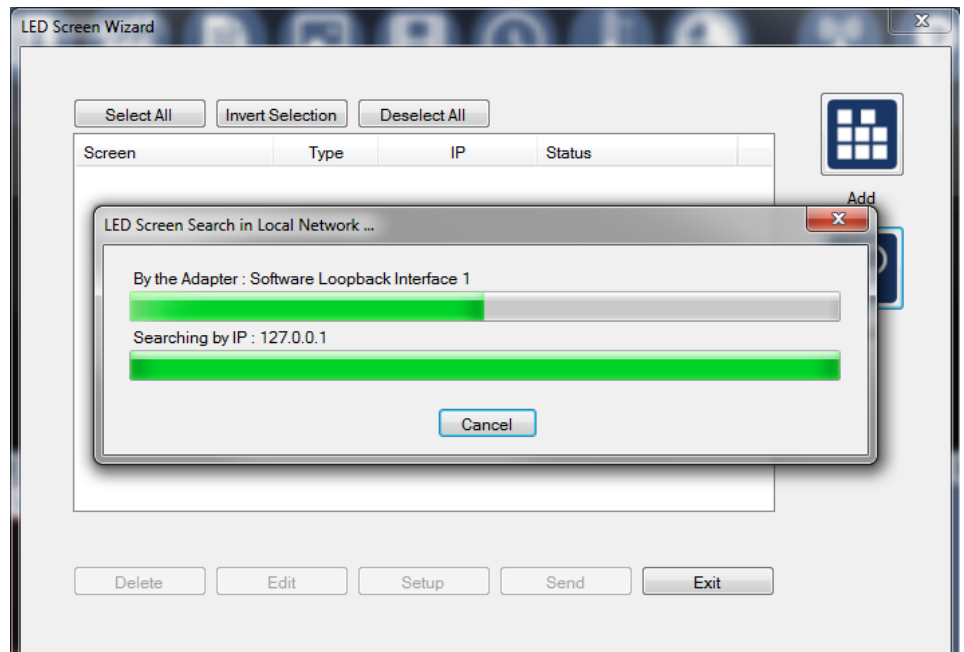
To Add Temperature

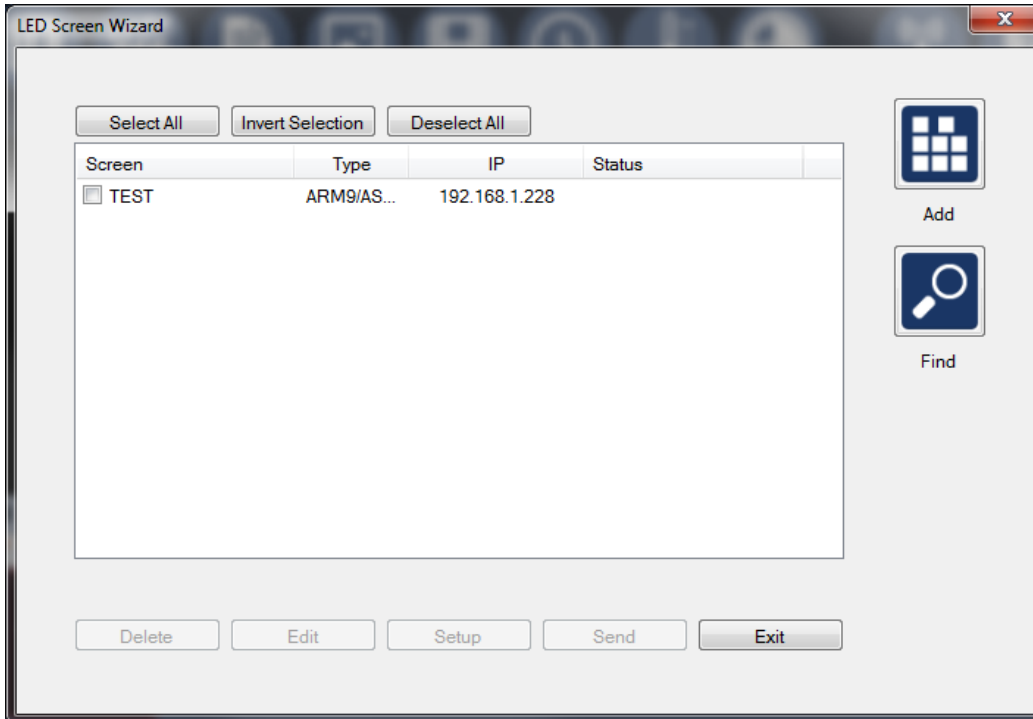
Sending contents



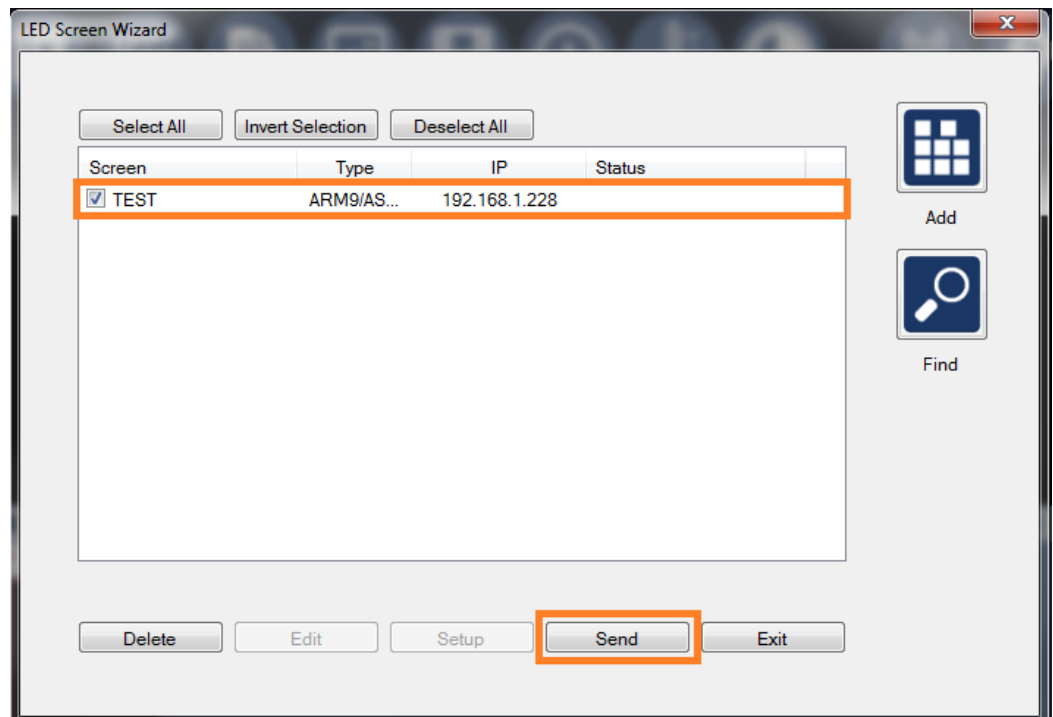
Once you click on Find the software will look for you sign using your Wireless USB Adapter

Once it finds it there will be an IP Address displaying





A message will display saying one device found



Click on the Check Box and SEND

Your Sign should be displaying the MESSAGE you just send to it
