

# FOR LEASE

1319 Veterans Parkway, Suite 2B, Bloomington, IL



**Building Size**  
11,400± sq. ft.

**Year Built**  
1989

**Lease Type**  
Modified Gross

**Available Space**  
1,260 ± sq. ft.

**Lease Rate**  
\$15.00 sq. ft.

**Parking:**  
42 undesignated

Welcome to Veterans Center, where business meets opportunity. Schrof Companies is pleased to offer this office space for lease, perfectly suited for entrepreneurs, startups and established businesses looking to thrive in a dynamic environment.

This well-located office suite offers a functional layout ideal for professional services, healthcare, or administrative use. The current floorplan has 4 large private offices, reception and waiting area. Positioned in a high-traffic area with Veterans Parkway visibility, it presents an excellent opportunity for businesses seeking affordable space in a strategic location.

Take advantage of high-visibility signage opportunities with both monument signage and suite-specific signage options. Ideal for tenants seeking prominent exposure in a high-traffic location, this offering delivers unmatched branding potential.



**For more Information Contact:**

**Pam Schrof Rieger** "Designated Managing Broker" 815/250-4027 [pam@schrofcompanies.com](mailto:pam@schrofcompanies.com)  
See All Our Listings at [CREXi.com](http://CREXi.com)

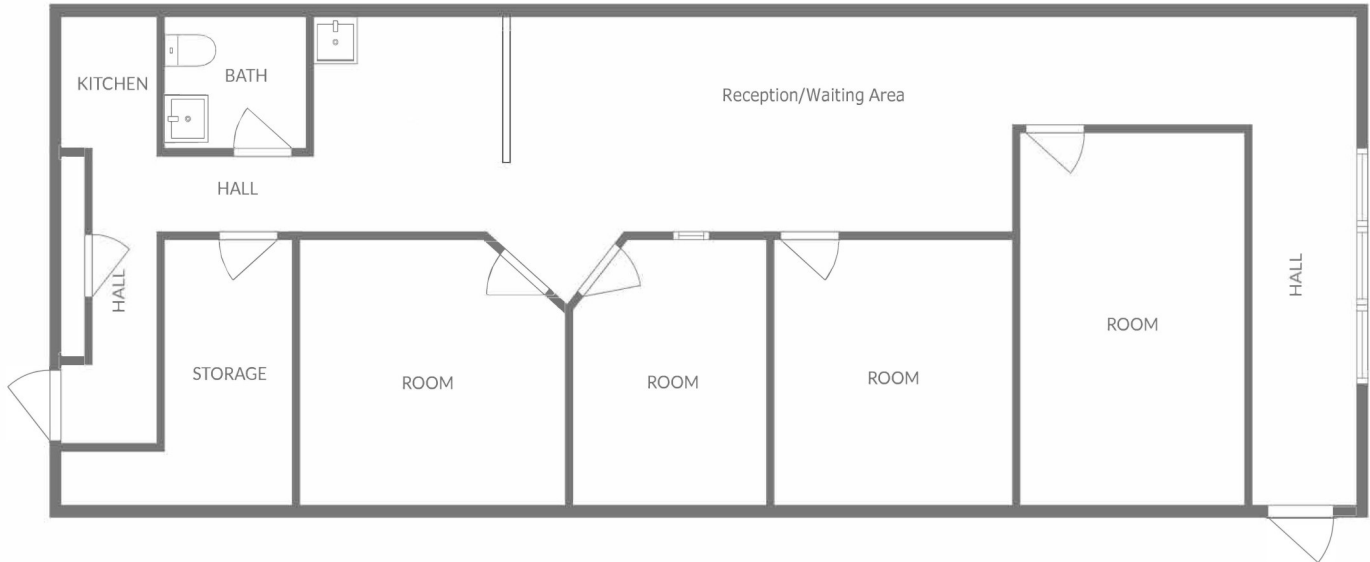
Real Estate Services

SCHROFCOMMERCIAL.COM  
2303 E. Washington—Suite 5-C — Bloomington, IL 61704  
309/662-3200

Property Management

# FOR LEASE

1319 Veterans Parkway, Suite 2B, Bloomington, IL



1 Mile	3 Mile	5 Mile
24,500 Est. Population	120,700 Est. Population	144,900 Est Population
79,700 Est. Average Income	72,600 Est. Average Income	76,300 Est. Average Income
19,400 No. of Employees	99,000 No. of Employees	118,100 No. of Employees

***For more Information Contact:***

***Pam Schrof Rieger "Designated Managing Broker" 815/250-4027 pam@schrofcompanies.com  
See All Our Listings at CREXi.com***

Real Estate Services

SCHROFCOMMERCIAL.COM  
2303 E. Washington—Suite 5-C — Bloomington, IL 61704  
309/662-3200

Property Management