

# FOR LEASE

211 Landmark Dr., Suite A-3 Normal, IL



**Building Size**  
5,748± sq. ft

**Year Built**  
1988

**Lease Type**  
Modified Gross

**Available Space**  
1,403 ± sq. ft.

**Lease Rate**  
\$15.00 sq. ft.

**Parking:**  
42

## Now Leasing: Modern Office Suite in Landmark Square

Take your business to the next level with this exceptional leasing opportunity! Located in Normal IL, one block off Veterans Parkway. This professionally managed business park offers the ideal setting for companies seeking convenience, visibility, and a polished work environment.

This office suite offers an efficient layout ideal for specialized services, healthcare, or administrative use. The current floorplan has 3 large private offices, a welcoming reception area with a dedicated waiting room, and a secure air-lock entry, perfect for businesses that value privacy and controlled access.

Take advantage of high-visibility signage opportunities with both monument and suite-specific signage options. Ideal for tenants seeking prominent exposure in a high-traffic location, this offering delivers unmatched branding potential.

Surrounded by popular retail and office businesses, this suite is ideal for professionals seeking both privacy and prominence.

### *For more Information Contact:*

***Pam Schrof Rieger "Designated Managing Broker" 815/250-4027 pam@schrofcompanies.com***  
***See All Our Listings at CREXi.com***

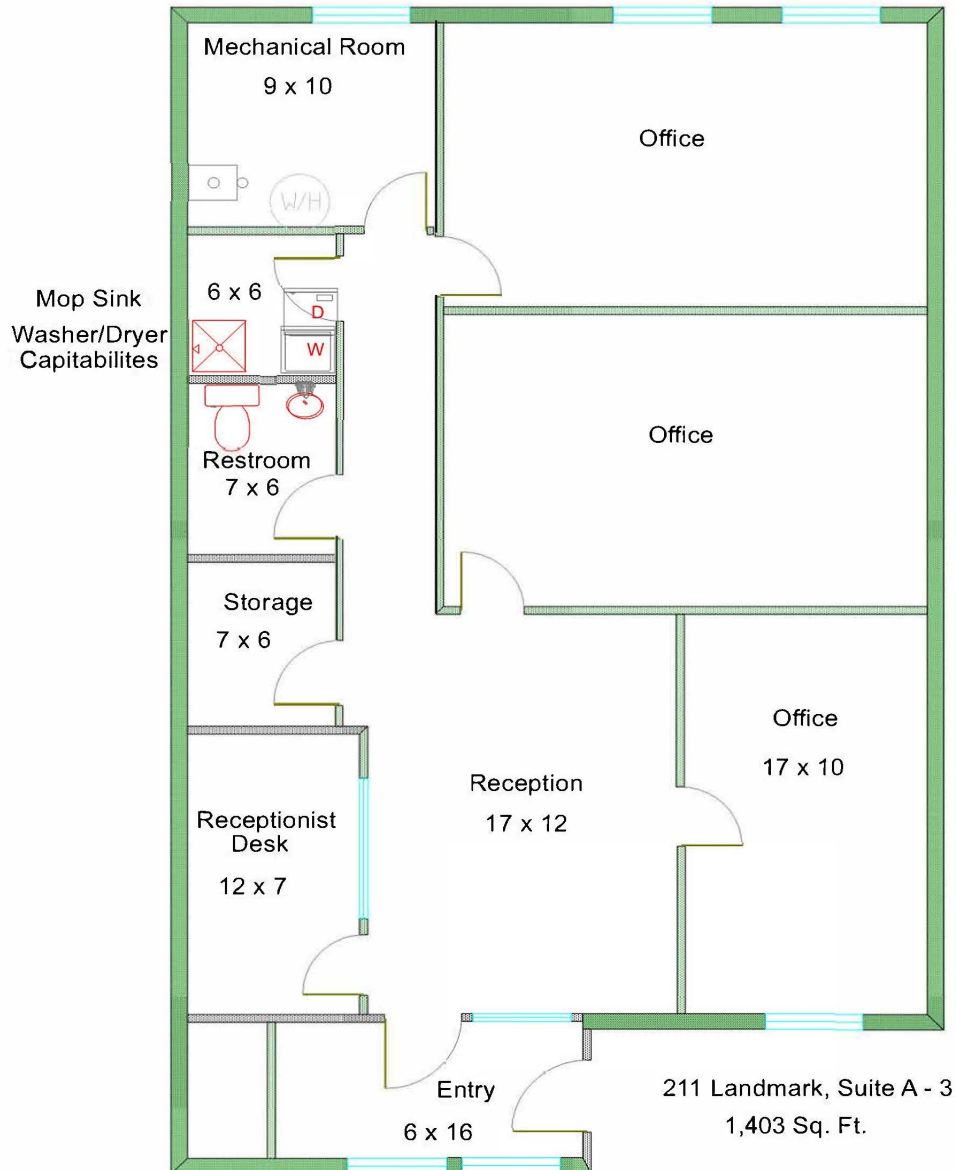
Real Estate Services

SCHROFCOMMERCIAL.COM  
2303 E. Washington—Suite 5-C — Bloomington, IL 61704  
309/662-3200

Property Management

# FOR LEASE

211 Landmark Dr., Suite A-3, Normal, IL



**For more Information Contact:**

**Pam Schrof Rieger "Designated Managing Broker" 815/250-4027 [pam@schrofcompanies.com](mailto:pam@schrofcompanies.com)**  
**See All Our Listings at [CREXi.com](http://CREXi.com)**

Real Estate Services

**SCHROFCOMMERCIAL.COM**  
2303 E. Washington—Suite 5-C — Bloomington, IL 61704  
309/662-3200

Property Management