

FOR LEASE

211 Landmark Dr., Suite E4A Normal, IL



Building Size
5,748± sq. ft

Year Built
1988

Lease Type
Modified Gross

Available Space
785 ± sq. ft.

Lease Rate
\$1,050.00

Parking:
42

Now Leasing: Office Suite in Landmark Square

This executive office suite is located in Landmark Square, a professionally managed center just one block off Veterans Parkway, offering a strong visibility and exposure near a busy commercial corridor. This suite offers a smart, efficient layout ideal for professionals establishing or expanding their business. The current floor plan features two private offices, a professional reception area with a dedicated waiting room, and a secure air-lock entry, providing privacy and controlled access for both staff and clients.

Tenants can take advantage of high-visibility monument and suite-specific signage opportunities, offering exceptional exposure in a high-traffic location and strong branding potential.

Surrounded by popular retail and office businesses, this suite is ideal for professionals seeking both privacy and prominence.

For more Information Contact:

Pam Schrof Rieger “Designated Managing Broker” 815/250-4027 pam@schrofcompanies.com
See All Our Listings at CREXi.com

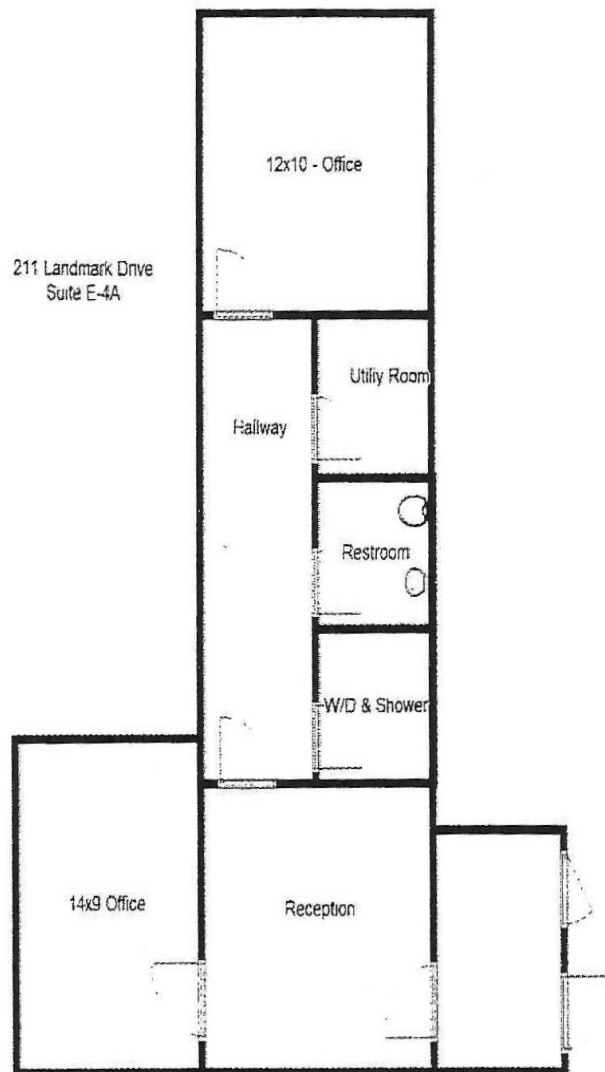
Real Estate Services

SCHROFCOMMERCIAL.COM
2303 E. Washington—Suite 5-C — Bloomington, IL 61704
309/662-3200

Property Management

FOR LEASE

211 Landmark Dr., Suite E4A, Normal, IL



For more Information Contact:

***Pam Schrof Rieger "Designated Managing Broker" 815/250-4027 pam@schrofcompanies.com
See All Our Listings at CREXi.com***

Real Estate Services

SCHROFCOMMERCIAL.COM
2303 E. Washington—Suite 5-C — Bloomington, IL 61704
309/662-3200

Property Management