



# OFFICE | LEASE

3004 General Electric Road, Suite 2  
Bloomington, IL



**Building Size**  
4,920\* SF

**Year Built**  
1996

**Lease Type**  
Modified Gross

**Available Space**  
1,800\* SF

**Lease Rate:**  
\$17.00 SF

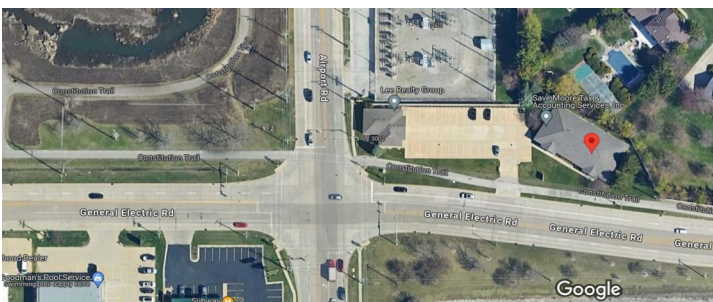
**Parking:**  
28 undesignated

\*approx.

Welcome to our office suite available for lease, perfect for businesses seeking a professional and comfortable workspace. This premium office suite is thoughtfully designed to meet the diverse needs of modern businesses, providing a blend of functionality and sophistication.

The Suite features three private offices, two separate dedicated work areas or conference room, a reception area and waiting room. Natural light fills all the work areas, creating a bright and energizing atmosphere.

The property is located at the corner of General Electric and Airport Road, giving you a great east side address.



**For more Information Contact:**

**Pam Schrof Rieger "Designated Managing Broker" 815/250-4027 [pam@schrofcompanies.com](mailto:pam@schrofcompanies.com)**  
**See All Our Listings at [CREXi.com](http://CREXi.com)**

Real Estate Services

**SCHROFCOMPANIES.COM**  
2303 E. Washington—Suite 5-C — Bloomington, IL 61704  
309/662-3200

Property Management



# OFFICE | LEASE

3004 General Electric Road, Suite 2  
Bloomington, IL



***For more Information Contact:***

***Pam Schrof Rieger “Designated Managing Broker” 815/250-4027 [pam@schrofcompanies.com](mailto:pam@schrofcompanies.com)  
See All Our Listings at [CREXi.com](http://CREXi.com)***

Real Estate Services

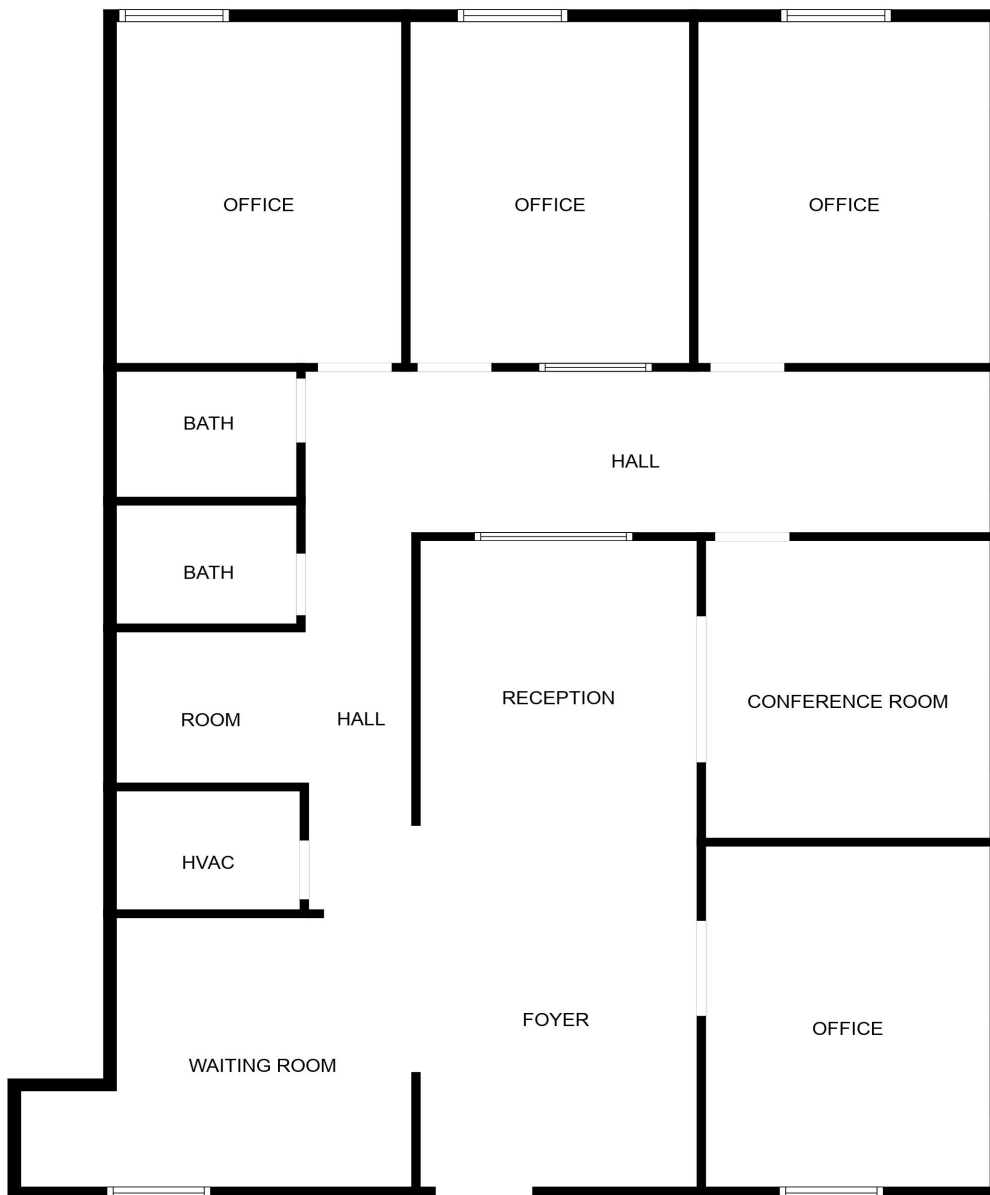
**SCHROFCOMPANIES.COM**  
2303 E. Washington—Suite 5-C — Bloomington, IL 61704  
309/662-3200

Property Management



# OFFICE | LEASE

3004 General Electric Road, Suite 2  
Bloomington, IL



***For more Information Contact:***

***Pam Schrof Rieger “Designated Managing Broker” 815/250-4027 [pam@schrofcompanies.com](mailto:pam@schrofcompanies.com)  
See All Our Listings at [CREXi.com](http://CREXi.com)***

Real Estate Services

**SCHROFCOMPANIES.COM.**  
2303 E. Washington—Suite 5-C — Bloomington, IL 61704  
309/662-3200

Property Management