

Benefits to Repairing Railroads with Polyurethane Foam

Overtime all infrastructure needs to be repaired. Unleveled railroad tracks are hazardous and often times require a long shut down. HMI understands the importance of railroad safety and stands behind the Deep FoamjectionTM process to repair and stabilize faulty railroads and repair failing soils.



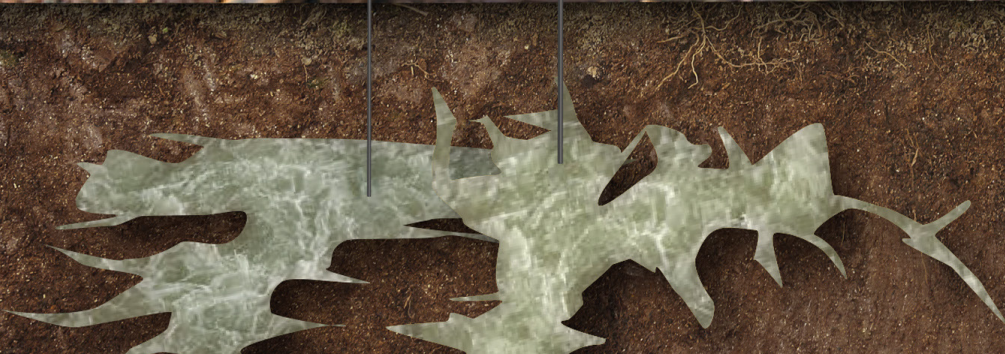
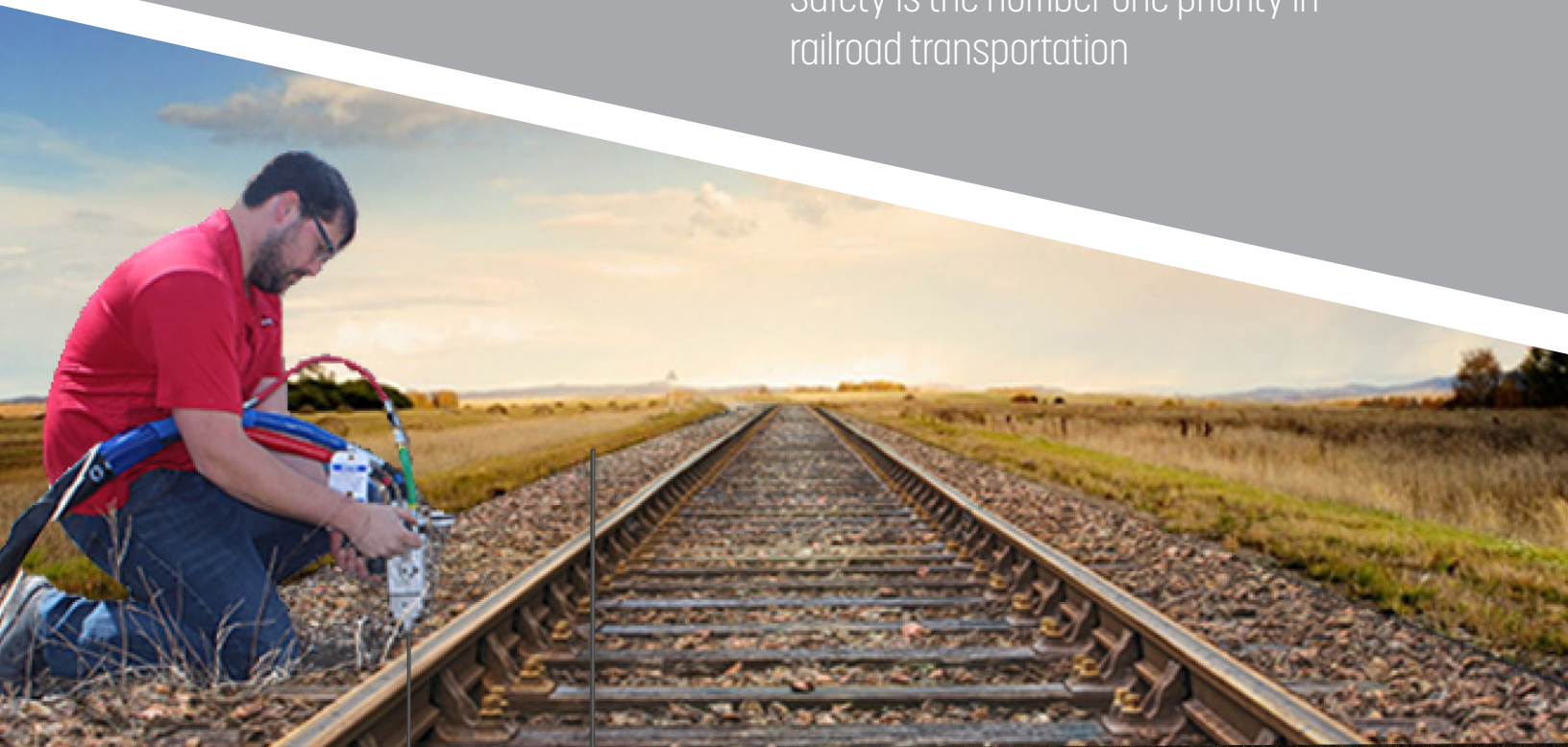
Time Savings & Railroad Down Time
Save days or weeks in total reconstruction of the railroad. Quick and ready to use immediately



Eco Friendly
HMI foam leaves the smallest carbon footprint vs all other poly's on the market



Reduce Liability
Safety is the number one priority in railroad transportation



The HMI Deep Foamjection™ process is quick, ready to use immediately and long lasting.

- An upgrade to sub-surface concrete lifting
- Repair unstable soils
- Installing a stronger foundation to support slabs and structures that settled
- Foam follows the path of least resistance and will fill weak areas
- Fills fissures and ground voids
- Fills voids holding water & displaces collected water
- Increase load bearing capacity of subgrade
- Permanent repair, foam never changes shape or absorbs ground water
- Foam soaks into the weak soils and then expands, binding the soil and making it solid
- Does not leach chemicals into the ground

