

20 - 0244 | Innovation Village

This 3-tower mixed-use project by WestStone Group on King George Blvd across from Surrey Memorial Hospital received 3rd Reading (Preliminary Approval) on July 26. The application is seeking a Rezoning, OCP & City Centre Plan Amendment, and General Development Permit to allow for three towers to be built in phases.

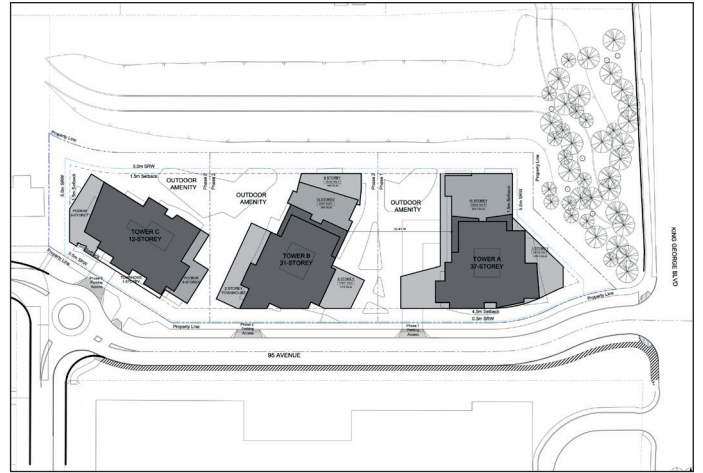
The tallest tower (37-storeys) closest to King George Blvd is to contain retail & office space on levels 1-5 with residential above. The remaining 2 towers to the east (31 & 12-storeys) are to be entirely residential. Separate detailed Development Permit applications are to follow in the future for each building.

Address: King George Blvd & 95 Ave
Proposal: 12 + 31 + 37-Storey Residential
(254 Units)
Office, Retail (67,468 SF)

Developer: WestStone Group

Architect: IBI Group

Expected Completion: TBD



View looking north-west from the corner of 108 Ave & 140 St