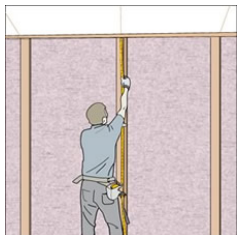


How to Install a Mass Loaded Vinyl in Wall or Ceiling

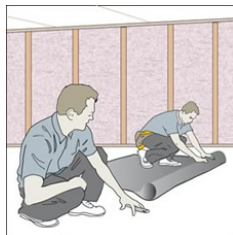


MEASURING AND CUTTING



MEASURE THE SURFACE

Measure the length of the first piece parallel to the framing. For walls, from floor to ceiling. For ceilings, along length of joist.



ROLL OUT THE MLV

Roll out the MLV on the floor and mark the measurement for cutting.



CUT TO SIZE WITH A RAZOR

With a razor knife, cut to the required length. Use a straight edge or T-Square for a straight cut.

FASTEN THE MLV, TAPE SEAMS, AND CAULK GAPS



POSITION MLV AND BEGIN FASTENING

With a helper, position the first cut piece of MLV. Begin fastening starting from the top of the wall working your way down.



CONTINUE FASTENING

Fasten the nail or screw with a washer 2' on center along the top and bottom plate and length of each stud.



TAPE SEAMS, SEAL GAPS

Tape the seams using duct or foil tape. If the seams are not tight then caulk the seam before taping. Caulk any remaining gaps at this time.

OTHER USEFUL TIPS

- Cut around any wall or ceiling openings, ie, electrical outlets, recessed lights, wire holes. Seal around opening perimeter with acoustical sealant or other flexible caulk.
- TotalMass Barrier MLV is sold in widths of 48" to accommodate both 16" and 24" on center framing.
- We suggest installing TotalMass MLV parallel to the framing to avoid overlapping over studs.
- Creating seams on studs instead of between studs helps to ensure a tight seam.
- If the MLV seams are overlapped between the studs, then cut back the MLV along the top and bottom plate to avoid doubling up the thickness of the MLV over the framing.

TOPFENCING ACOUSTICAL MATERIALS SUPPLIES

PHONE:0086-318-7961555

WWW.MASS-LOADED-VINYL.COM
EMAIL:SALES@MASS-LOADED-VINYL.COM