



**Family Office Alliance
for Societal Impact**

CONFERENCE

Addressing Critical Human Problems Using AI

March 17-18 , 2026 | San Diego, California

From Gathering to Movement

Over the past five years, a variety of organizations – including the Stanford Engineering Disruptive Technology Program – have hosted conferences for family offices. Post-COVID, family office gatherings have exploded, with hundreds hosted in the US alone and many more globally.

Rarely, however, do these conferences provide a lasting framework for educating and equipping the next generation of family office leaders with the tools needed to navigate this increasingly complex world. With the radical, transformative power of AI and its revolutionary ability to learn, reason, and automate complex tasks, its potential is much like raw uranium, able to either power the world or destroy it. And family businesses that fail to embrace it won't just fall behind, they'll disappear.

What is needed is a sustainable platform that extends beyond an annual event to help family offices harness technology as a positive force for solving critical human challenges, build awareness of the geopolitical forces looking to divide us, and engage collaboratively to assure that all members value human freedom, innovation, resilience, and multi-cultural diversity above all.

In that spirit, we are pleased to announce the launch of the Family Office Alliance for Societal Impact—a professional alliance bringing together multigenerational family offices, leading faculty from top engineering and business schools, enterprise executives, and family dynamics thought leaders. The Alliance is an independent organization, unaffiliated with any university administration or program, but it collaborates closely with faculty from the world's top engineering and business schools.

Our mission is to create a long-term platform focused on enabling sustainable societal impact through the education and development of rising family office leadership.

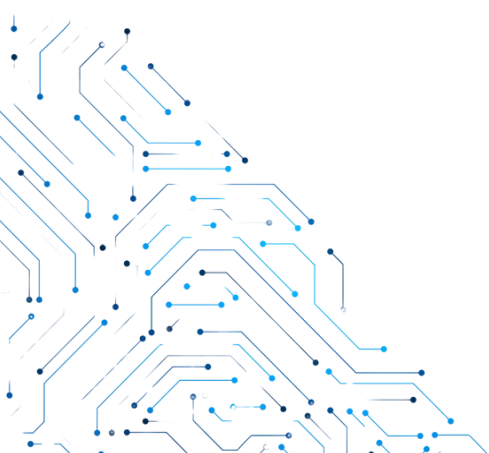
From Gathering to Movement

Our vision is to empower the next gen leadership in those most affluent families (~10%) that represent over 90% of the Great Wealth Transfer– widely estimated to be \$84 trillion to \$90 trillion over the next two decades – as the best way to meaningfully address our planetary and geopolitical risks and assure that AI is used for maximum social benefit.

[Read The Great Wealth Transfer in 3 Charts](#)

Our values are to foster trust through transparent, honest, and open communication, which can only be assured by connecting our members to impartial, peer-reviewed experts across the platform—a practice deemed essential by our families and sponsors to fulfill our mission.

The impetus behind this effort was our 2022 Stanford family office summit, a first-of-its-kind forum focusing on the multigenerational family leadership needed to address three existential sustainability risks – our civil society, our environment, and our family structure. Of the more than 200 participants, nearly 40% were next gen members (almost half of whom were from outside the US), the largest gathering of such cohort known to any attendee and for whom a weekend retreat was curated to evoke their special challenges and opportunities that produced a collectively signed manifesto outlining their needs and desires which will inform this Alliance.





The March 2026 Conference



Addressing Critical Human Problems Using AI

On March 17–18, 2026, we will convene in San Diego for the inaugural conference of the Family Office Alliance for Societal Impact: “Addressing Critical Human Problems Using AI.” This invitation-only gathering will bring together faculty from world-renowned institutions—including Stanford, MIT, Wharton, Harvard, Columbia, and UC San Diego—alongside senior executives from leading technology, AI, and venture capital firms, geopolitical experts, and influential family office thought leaders.

This event marks the launch of a continuing series of conferences and programs designed to foster a movement which will help family offices engage with emerging technologies to create lasting, positive impact on society. Family office attendees will leave not only with a deeper understanding of how to optimize AI opportunities and mitigate emerging threats, but also with a clear and compelling framework for strengthening family dynamics and engaging the next generation in building a legacy of impact.

Five Core Conference Objectives

1. Make sense of global uncertainty.

Equip family offices to navigate the compounding uncertainty created by economic shifts, geopolitical tensions (including U.S.–China decoupling and tariffs), and the rapid acceleration of AI. We'll explore how these forces are reshaping investment landscapes—and how to act strategically amid the change.

2. Understand how AI can best meet urgent societal needs.

Explore how emerging AI technologies are being applied—and how they can be most effectively deployed—to address some of humanity's greatest challenges, including healthcare, energy, and climate change.

3. Facilitate multigenerational leadership collaboration.

Spark cross-generational conversations by pairing rising family office leaders with their peers in startups, technology, and venture capital—cultivating new ideas, enduring partnerships, and purpose-driven leadership.

4. Prepare families to thrive together for long-term impact.

Provide tools, training, and education that not only help multigenerational families evaluate the AI opportunities with the greatest potential for societal impact but also strengthen their capacity to thrive as a family unit—nurturing purpose, unity, and leadership across generations.

5. Assure legacy by harnessing AI's “human” ability

Explore Digital Twin technology to preserve the knowledge and wisdom of the family's wealth creator by capturing his/her expertise, insights, and decision-making patterns. And by embedding values, philosophies, and key insights, future leaders can learn from past experiences, avoid mistakes, and maintain continuity while refining strategies to continually adapt. Critically, a well designed digital twin is not just an archive, it engages, responding to queries, offering guidance, even simulating conversations – ensuring the essence of a family pioneer remains alive and interactive eternally.

The Conference Partner Team



Michael Steep
*Founder Stanford
Disruptive Tech Program*



Lonnie Gienger
Family Office & Investor



Jeremiah Baker
*Co-Founder of Bonin
Ventures*



Bob Bernstein
*Co-founder, Prism Family
Office*



Cheryl Goodman
*CEO Find Good Tech AI
Event Management*



Lisa Christian, CISSP
Innovation Consultant

Conference Agenda

Tuesday, March 17th

Module	Title & Content	Proposed Speakers
Part I: ARTIFICIAL INTELLIGENCE – Understanding AI and the Path to Societal Impact		
01 9 AM (15 minutes)	Introduction to the Conference Theme: AI and the Path to Positive Societal Impact	Michael Steep , Silicon Valley Executive, Speaker, and Investor; Founding Executive Director, Stanford Engineering Disruptive Technology Program. Partner Team: Jeremiah Baker, Lonnie Gienger, and Cheryl Goodman
02 9:15 AM (15 minutes)	AI in Family-run Enterprises – Bold Multi-generational Leadership Now an Existential Imperative	Lonnie Gienger , Family Office Bob Bernstein , Guitars Over Guns
03 9:30 AM (30 minutes keynote, 15 minutes Q&A)	Entrepreneurship, innovative governance, and Societal Impact in the Era of AI	Tim Draper , Founder of Draper Associates and Venture Capitalist
04 10:15 AM (30 minutes keynote, 15 minutes Q&A)	Impact and Societal Impact of AI on Enterprise Solutions	Tara Prakriya , Vice President at Microsoft, Surface Product Group, Adjunct Professor at Stanford.
05 11 AM (30 minutes keynote, 15 minutes Q&A)	Critical Turning Point in Disruptive Technology Impacting Human Society	Michael Steep , Founding Executive Director, Stanford Engineering Disruptive Technology Program.
Networking Event and Luncheon		

Conference Agenda

Tuesday, March 17th

Module	Title & Content	Proposed Speakers
06 1:30 PM (15 minutes overview, 30 minutes panel)	Generative AI and Application Development	James Short , Professor of AI Supercomputing Center, UCSD Mark Naufel , CEO, Axio.ai Stephanie Sylvestre , Founder Avatar Buddy
07 2:15 PM (15 minutes overview, 30 minutes panel)	Risk Assessment, Technology, and Corporate Liability	Seth Dobrin , Former IBM Executive Chief Officer for AI, globally recognized expert on AI Risk Assessment. Partner, 1Infinity Venture Group
08 3 PM (15 minutes overview, 30 minutes panel)	Ai Silicon Highway – Next Gen Chips and Path Forward	Howard Wright , SVP NVIDIA Jonathan Davis , Global Executive Vice President, SEMI Foundation Rob Press , General Manager and Senior Executive, KLA Semiconductors
	Break: Performing Arts	
Part II: FINANCIAL IMPACT, EXPECTATIONS, AND OPPORTUNITY		
09 4 PM (15 minutes overview, 30 minutes panel)	Panel Discussion: Family Office Next Generation and Societal Impact	Bob Bernstein , Chairman Guitars-Over-Guns; PRISM FO Lonnie Gienger , Panel Lead Joe Deitch , Chairman of Commonwealth Financial Network Alix Lebec , Founder LEBEC Consulting Melanie Perkins , FO Gary White , CEO, Water.org Arindam Nag , CEO CenSai
10 5 PM (30 minutes)	The 10:1 AI Business Model Transformation	Qualcomm
Cocktail Networking Event Performing Arts Dinner		

Conference Agenda

Wednesday, March 18th

Module	Title & Content	Proposed Speakers
Part III: RECALIBRATING LEADERSHIP AND EXPERTISE		
11 9 AM (15 minutes overview, 30 minutes panel)	How do we develop and nurture family office intelligence for multi generational impact	Lonnie Gienger & Bob Bernstein, Moderators Dave Furneaux , Founder of Blue IO Dennis Jaffee , Family Office
12 9:45 AM (15 minutes overview, 30 minutes panel)	Time to Ask Some Tough Questions About AI	Bob Bernstein , Chairman, Guitars Over Guns Howard Tullman , General Managing Partner of G2T3V and Chicago High Tech Investors
13 10:30 AM (15 minutes overview, 30 minutes panel)	The Role of Venture Capital and Family Office in AI Investing – A Panel Discussion	Ray Levitt , Emeritus Kamagai Professor of Engineering, Stanford Engineering School; Venture Partner, Blackhorn Venture Capital Emily Man , Partner, Primary Ventures Michael Loeb , NYC Family Office Sal Spina , Next Generation Associate at Kyber Knight Capital
14 11:15 AM (15 minutes overview, 30 minutes panel)	Three Critical Societal Problems for Consideration: Energy, Climate, and Healthcare	Fred Van Beuningen , Chrysalix Venture, Europe. Energy and Climate Change Josh Makower , Professor of Medicine, Stanford University, Healthcare Chris Salem , Kaiser Permanente, Healthcare
15 12 noon (15 minutes overview, 30 minutes panel)	Geopolitical Risk, Policy, and Regulatory Environments	Beth Sanner , Former National Security Advisor and Foreign Affairs Mike Dana , Lt. General Retired, US Marine Corps David Firestein , CEO George Bush Foundation for US-China Relations David Walsh , FON Holdings

Conference Agenda

Wednesday, March 18th

Module	Title & Content	Proposed Speakers
16 12:45 PM (15 minutes overview, 30 minutes panel)	Multi-Generational Leadership in the Age of AI	Dave Toole , CEO Outhink Enterprises Tara Mandrekar , Associate Director Ourmedia Gen Z Gary Bolles , Chair Future of Work, Singularity University Andy Billings , Author Future Ready
1:30pm Luncheon Keynote: Creating Strategy During Volatile Change Rita McGraph, Professor, Columbia University		
IV. PARALLEL INVESTMENT WORKSHOPS – INTRODUCING 50 STARTUP COMPANIES		
17 2:30 PM (15 minutes)	Workshop Guidance - Procedure and Process for Startup Workshops	Cheryl Goodman , Workshop moderator Dr. Mark Naufel , CEO and Founder, Axio.ai Personalized lifelong learning
	WORKSHOP SPONSORSHIP – QUALCOM AND STARTUP SAN DIEGO	
	ROOM A	ROOM B
18 3 PM (15 minutes overview, 30 minutes panel)	Healthcare Chris Salem , Kaiser Permanente, MODERATOR	Commercial Real Estate Professor Herman Donner , KTH Sweden, MODERATOR
4 PM (15 minutes overview, 30 minutes panel)	Homeland Security & Defense Mike Dana , Lt. General Retired, US Marine Corps MODERATOR	Energy Fred Van Beuningen , Chrysalix Venture, Europe. Energy and Climate Change
5 PM (15 minutes overview, 30 minutes panel)	Financial Services and Banking Emily Mann , Partner, Primary Ventures MODERATOR	
5:45 PM to 6 PM	Closing Session – The Family Office Alliance for Societal Impact	Michael Steep, Lonnie Gienger, and Bob Bernstein



Michael Steep is the Founding Executive Director of the Stanford Global Projects Center's Disruptive Technology Program, and former Senior Vice President of Global Business Operations for the PARC innovation center in Palo Alto, California. Steep has over two decades of operating experience managing global P&L's, sales, digital marketing, strategy, business development, and strategic alliances for Microsoft, Lexmark (IBM), Apple, and HP. He works with commercial clients on transforming their industry and company business models by leveraging emerging technologies - big data, predictive analytics, cloud, mobile, and privacy. He also served on the Smart City London Board and is Contributing Editor for Forbes writing articles on digital cities, disruptive technologies, and executive leadership. Steep's passion is corporate transformation through effective leadership and practical approaches to innovation. He has worked extensively at Microsoft and PARC with executives from companies crossing multiple industries including Aerospace, Healthcare, Pharma, and Automotive. He works with the top Innovation and R&D executives from companies including Airbus, BMW, Google, Merck, BP, and Booz Allen. Steep is a noted global speaker for Leading Authorities and has delivered over 60 keynotes to associations and companies on technology topics including AI.



Lonnie Gienger is a strategic innovator and legacy architect dedicated to building businesses and families that create lasting impact. He is Principal & CEO of Wilkinson, a family-owned multifamily real estate investment platform that has produced industry-leading returns and positive impact for more than three decades. Beyond business, Lonnie is passionate about developing foresight-driven leaders who build organizations that drive meaningful change across generations, believing that innovative thinking, strategic collaboration, and values-driven leadership are essential to solving complex global challenges and creating sustainable legacies. For decades, he has co-founded and chaired leadership development firms that have coached thousands of executives worldwide. He is the author of *Beyond Business: How Your Company Can Build a Better World* and is recognized for his thought leadership in holistic business strategy, investment success, and multigenerational impact.

A dedicated lifelong learner, Lonnie has spent the past 20 years applying similar systems-thinking and future-focused strategies he uses in business to lead his family. As a result, he is frequently sought after by family offices and high-net-worth leaders looking to build resilient, purpose-driven legacies that extend beyond financial capital to create lasting societal value. Partner, Alliance for Societal impact. Partner, Alliance for Societal impact.



Bob Bernstein, Co-founder, Chairman, Guitars Over Guns, Inc; Founder, CEO, PRISM Family Office, LLC; Co-founder, Envestnet Retirement Solutions (ret'd). Independent Trustee: US Bank & Trust /PFM Advisors, Fay Financial, Inc., FON Advisors. Advisory Board: Stanford Global Projects Center (Co-chair, 2022 Family Office Summit); Audiience, Inc.; Avatar Buddy, Inc. (Chairman) Bob has been a disruptive in/entrepreneur in institutional money management, financial advisory, fintech, and social impact space for over 45 years. A Chicago/Philadelphia native now living in Miami and invests in and mentor's entrepreneurs in several AI-driven startups. Deeply involved with Guitar Over Guns, Bob's been helping his professional musician son, Chad, co-founder and inspirational CEO of GOGO, turn his passion for service through music into a national channel for social impact. He partnered with Steep in the planning and execution of the 2022 Stanford Family Office Conference.



Cheryl Goodman is a conference partner and executive at FindGood.tech, AI Solutions. She is also a Fmr Qcom, Sony Global | Applied AI Assoc. and runs Startup San Diego. Cheryl is also known for her podcase Mind the Machine and is the author of How to Win Friends & Influence Robots. She serves as the AI Lecturer Speaker for AI 2030 Think Tank. Partner, Alliance for Societal impact.



Jeremiah Baker is the Co-Founder of Bonin Ventures, and an Advisor to the DTDC Program at Stanford. Bonin Ventures is a growth accelerator that helps skyrocket growth by directly connecting businesses with their dream clients. Baker grew up in a diverse family with over 40 foster brothers and sisters. His parents were both entrepreneurs, running businesses in real estate, auto repair, hair salons, and restaurants. Partner, Alliance for Societal impact. He's consulted with some of the world's top companies including, Siebel Systems, Hewlett Packard, Equifax, Nokia, Qualtrics, Quantum Metric, Witness Systems/Verint, etc. Baker graduated from Hartwick College with a Bachelor of Arts in Economics.



Lisa Christian , CISSP is an innovation consultant who leads growth and transformation strategy and execution for innovative and collaborative business, new venture, technical and security development. Global corporate, banking and consulting experience in financial services, manufacturing, technology, cybersecurity, energy, higher education and health vertical markets with organizations ranging from start-ups to large, mature organizations. Held intrapreneurial positions with J.P. Morgan in FinTech and strategy, RR Donnelley in strategy, M&A and investor relations, and PwC for a family office fintech accelerator and cybersecurity consultancy. Completed MBA in Finance, Marketing, and International Business from the Kellogg School of Management at Northwestern University and Stanford School of Engineering's Advanced Cybersecurity Program. Certifications specific to cybersecurity include CISSP and CC. Adjunct Professor of FinTech and Marketing at Northwestern and the University of Colorado's (CU) Business School and College of Engineering Technology, Cybersecurity and Policy Program. Completed coursework in Renewable and Sustainable Energy Commercialization at CU. Past board member for ACG and ISSA, advisor for Blackstone Entrepreneurs Network and member of ISC2. Partner, Alliance for Societal impact.



Tim Draper founded Draper Associates, DFJ and the Draper Venture Network, a global network of venture capital funds. He funded Baidu, Tesla, Skype, SpaceX, Twitch, Hotmail, Focus Media, Robinhood, Athenahealth, Box, Cruise Automation, Carta, Planet, PTC and 15 other unicorns at the seed stage. He is a supporter and global thought leader for entrepreneurs everywhere, and is a leading spokesperson for Bitcoin, Blockchain, ICOs and cryptocurrencies, having won the Bitcoin US Marshall's auction in 2014, invested in over 50 crypto companies, and led investments in Coinbase, Ledger, Tezos, and Bancor, among others. Tim Draper received a Bachelor of Science from Stanford University with a major in electrical engineering and a Master of Business Administration from the Harvard Business School.



Tara Prakriya Vice President, Surface Computing Group within Microsoft. Artificial Intelligence tech guru. Formerly Co-Head of the Azure IoT Mobility division focused on the Microsoft Connected Vehicle Platform and Azure Maps. Along with a very deliberate ecosystem including the world's leading mobility and transportation companies such as Volkswagen AG, Renault Nissan- Mitsubishi Alliance, TomTom, Moovit and others, Azure is working to reshape the automotive industry taking advantage of the simultaneous landscape shifts of connected vehicles, artificial intelligence, shared ownership, user mobility and electric vehicles business models.



DR. JAMES SHORT is Lead Scientist at San Diego Supercomputer Center at UC San Diego (SDSC). He is a research scientist interested in the economics of large-scale data systems, the valuation of data and information markets, and currently, the adoption, commercialization, and corporate governance of Artificial Intelligence (AI). In 2023 he founded SDSC's new industry focused AI Consortium, SPARK AI. The mission of SPARK is to advance knowledge, strategy, and practice in AI to achieve business success and competitive advantage, and to influence the development and adoption of modern, transparent, and trustworthy regulatory policy and corporate governance. SPARK is new, built around an eclectic mix of AI experts, senior data professionals, general managers, and academic researchers. Short received his undergraduate, master's and PhD degrees from MIT.



Mark Naufel is CEO of Axio AI. He is also an innovator, a Professor of Practice, and a tech entrepreneur. During graduate school, Naufel was appointed by the Governor of Arizona to serve on the Arizona Board of Regents. Naufel has received master's degrees in both Systems Engineering and Business Data Analytics, as well as his Ph.D. in Human Systems Engineering from Arizona State University. Mark is the Founder and Executive Director of Luminosity, Arizona State University's premier innovation lab, which engages over 100 interdisciplinary students annually in labs located in Arizona, Tennessee, Boston, and Ghana. Through Luminosity, Naufel serves as the Principal Investigator on R&D efforts for many of the world's most successful companies.



Seth Dobrin , Former IBM Executive Chief Officer for AI, globally recognized expert on AI Risk Assessment. Partner, InfinityOne Venture Group. A human-focused methodology anchored in clear business objectives, which seamlessly extends to generative AI. Our areas of expertise encompass a broad spectrum of technology solutions, including AI and Generative AI strategy, AI Governance, AI Education, AI Security, AI Compliance, and AI Impacts on Environmental and Social Responsibility Solutions.



Howard Wright is VP, Startup Ecosystem at NVIDIA | Accelerating the Future of AI Innovation through the Inception Program Connecting Startups. He is also involved with VCs & Global Tech Leaders.



Rob Press , General Manager and Senior Executive at Nova. Rob works directly with all the top Asian Semiconductor companies including Taiwan Semiconductor and is an expert on Dram and AI Chip design.



Dennis Jaffe focuses on the challenges of managing a Family Office multigenerational organization. Over a 40-year career, as professor, organizational consultant and family therapist I have helped families ENTERPRISES GROW AND THRIVE.

These complex challenges cannot be resolved quickly or easily. When they make the commitment to work together, I help work with BUSINESS FAMILIES to develop a roadmap towards the future, and develop the skills, agreements and practices that make their journey successful.



Joe Deitch is Chairman of Commonwealth Financial Network. He is an American business executive and philanthropist, and the author of Elevate: An Essential Guide to Life. In 2018, he founded the Elevate Prize Foundation.



Alix Lebec, Founder LEBEC Consulting. She brings over two decades of experience in entrepreneurship, innovative finance, and philanthropy. As a founding executive at WaterEquity—alongside Gary White, Matt Damon, and a global leadership team—she built a highly successful global asset manager investing in the water crisis and women across developing and emerging markets. Previously, she held leadership roles at The World Bank in Paris and Southeast Asia, Clinton Global Initiative, and Water.org, where she mobilized \$260 million in capital and built winning teams.



Melanie Perkins, is cofounder and CEO of design software maker Canva, which was valued by private investors at \$40 billion in September 2021 but has since seen its value marked down substantially.



Gary White, CEO, Water.org In 1990, he co founded WaterPartners, an American nonprofit developmental aid organization focused on universal access to safe drinking water and sanitation for people in developing countries. In July 2009, WaterPartners merged with Matt Damon's venture - H2O Africa Foundation to create Water.org.

White is a founding member of the Global Water Challenge , the Millennium Water Alliance, and Chairman of the Steering Committee for WASH Advocates.



Arindam Nag, CEO CenSai. As the CEO and co-founder of CentSai, I am passionate about empowering people to make informed financial decisions and achieve their goals. I have over 25 years of experience in financial journalism, education, and consulting, and I hold an MBA and a CAIA credential.

He launched CentSai to bridge the gap between Wall Street and Main Street, and to provide friendly and engaging content and software solutions for financial literacy. His platform helps financial advisors, banks, credit unions, and advisory platforms to connect with their customers, employees, and students, and to spread financial inclusion and wellness. He has partnered with dozens of clients across various sectors and regions, and we are now entering a phase of rapid growth and innovation. I am proud of leading a bootstrapped and diverse team that is disrupting the way non-financial people can access financial education and guidance.



David Walsh is Managing Partner at FON Advisors. FON Advisors (www.fonadvisors.com) is a global advisory firm specializing in the Aerospace, Defense & Government Industry (“ADG”) whose core service lines include: Management Consulting; Investment Banking; Valuation Advisory; and Investing.



Dave Furneaux, Founder of Blue IO. Dave has worked to build and scale remarkable companies such as Virsec Systems, Lufa Farms, Cybersaint, Lumicell and others. Dave partners with amazing entrepreneurs to solve challenging problems and creating solutions that benefit the world.



Howard Tullman is founding Executive Director of the Ed Kaplan Institute for Innovation and Tech Entrepreneurship at the Illinois Institute of Technology and the first University Professor (now retired) and the current General Managing Partner for the Chicago High Tech Investment Partners, LLC and for G2T3V, LLC, two early-stage venture funds, as well as an active board member for a number of tech startups, Howard Tullman is a highly sought-after educator, author, venture investor, technology advisor and business leader. He was the long-time CEO of 1871 in Chicago — an entrepreneurial hub for digital start-ups - which is ranked Number 1 in the world. Previously, he was the Chairman/CEO of Tribeca Flashpoint College which he co-founded in 2007, and, prior to that, he served as the President of Kendall College. For the past 8 years, he has written a weekly online column for INC. Magazine (with over 400 articles) seen by millions of website visitors.



Dr. Raymond Levitt earned his BSCE at Witwatersrand University and his MSCE and Ph.D. at Stanford University. He served on the MIT CE faculty from 1975-80 before moving to Stanford in 1980. He was elected to the rank of Distinguished Member of ASCE in 2008. In 2009, Governor Schwarzenegger appointed Dr. Levitt as one of the initial commissioners for the State of California's Private Infrastructure Advisory Commission. He is now a partner in Blackhorn Venture Capital.



Emily Man is a Partner at Primary Ventures, a billion-dollar early-stage venture firm headquartered in New York City. Investments in Enterprise and SMB SaaS, Healthcare, Consumer, Fintech, Infrastructure & Cyber, and Frontier Tech. Emily is a Partner at Primary, leading new investments in fintech and enterprise software companies. She loves going deep into unsexy industries and partnering with determined founders who are challenging the status quo.

Before Primary, Emily was at Redpoint Ventures investing across early and growth stage companies. She started her career as a hedge fund analyst at Point72 before helping build Point72 Ventures, the early-stage venture practice. Emily earned her BA from Columbia University where she graduated summa cum laude.



Sal Spina, Next Generation Associate at Kyber Knight Capital and Stanford Alum. Sal has a BS in Economics and MS in Computer Science from Stanford University. His Chicago-based venture firm focuses on early stage B2B SaaS companies. He worked with Mike Steep at the Stanford Engineering School.



Beth Sanner is the Director of Geopolitics and Strategy at International Capital Strategies. She has held a wide range of national security positions for over 35 years, including in the Office of the Director of National Intelligence, the Central Intelligence Agency, the National Security Council, and the U.S. Department of State. Her last government role was as the Deputy Director of National Intelligence for Mission Integration, where she oversaw the integration of Intelligence Community collection, analysis, and programs and served as President Trump's intelligence briefer.



Josh Makower is the Yock Family Professor of Medicine and Bioengineering at the Stanford University Schools of Medicine and Engineering and is the Byers Family Director and Co-Founder of the Stanford Mussallem Center for Biodesign. Josh is the Founder and Executive Chairman of ExploraMed, a medical device incubator that has created 10 companies over the past 20 years. He is also a Senior Advisor to Patient Square Capital, and an Advisory Venture Partner with Sofinnova Partners. Josh currently serves on the boards of Elevage, ExploraMed, Moximed, Willow, X9 and Coravin.

Josh holds over 300 patents and patent applications for various medical devices in the fields of cardiology, ENT, general surgery, drug delivery, plastic surgery, dermatology, aesthetics, obesity, orthopedics, women's health, and urology. He received an MBA from Columbia University, an MD from the NYU School of Medicine, and a bachelor's degree in mechanical engineering from MIT. Josh is a Member of the National Academy of Engineering, a Fellow of The National Academy of Inventors and The American Institute for Medical and Biological Engineering, was awarded the Coulter Award for Healthcare Innovation by the Biomedical Engineering Society in 2018.



Chris Salem is Area Director of Education and Training at Kaiser Permanente's Instructional Innovation and Learning Group. His interests include Educational Leadership, Adult Learning, Instructional Innovation, Instructional Design, Instructional Technology, Pedagogy, Health Sciences, Medical Imaging, Manual Medicine and Physical Therapy. He is a noted moderator and speaker on health care issues and innovation.



Lt. Gen Dana retired from the United States Marine Corps on 1 September 2019. He graduated from Union College in Schenectady, New York and was commissioned a Second Lieutenant in June of 1982. In a career spanning thirty-seven years he served as an armor officer, a logistics officer, and a strategic planner. As a three-star general officer he served as the Deputy Commandant for Installations and Logistics (DC I&L) and as the Director of the Marine Corps staff (DMCS). Over his thirty-seven-year career Lt. Gen Dana deployed ten times, including seven humanitarian, peacekeeping, or combat deployments. He was an infantry battalion logistics officer in Desert Storm, a landing support company commander in Somalia in 1992, a NATO staff officer in the Former Republic of Yugoslavia in 1996, a staff officer with a joint command in Kuwait in 2004/5, the commander of Marine Wing Support Group 37 in Iraq in 2006/7, a logistics officer in Haiti in 2010, and the Commanding General of 2d Marine Logistics Group in 2011/12 in Afghanistan. LtGen Dana is a school trained strategic planner. As a Brigadier General, he served as the Director of Logistics for US Northern Command in Colorado, Springs, Colorado. He also served as the Director of Strategy and Policy for US Pacific Command in Hawaii, where he and his team developed theater security cooperation, contingency, and crisis action plans with regional allies in the Pacific. Lt. Gen Dana is currently serving as a Senior Director with PALLAS Advisors, and he provides advisory services to companies in the unmanned, artificial intelligence and mobility industry. He and his family reside in Tucson, Arizona.



Dave Toole, CEO Outhink Enterprises, ran public semiconductor company, building over 200 advanced factories, 25X return. Developed first cloud platforms and what is called Web3 and AI with Intel. Launched several successful start-ups. Several social impact non-profits. Runs an Emerging Ai Venture Studio Operating System for the 21st Century Economy



Tara Mandrekar , Associate Director Ourmedia, working with dozens of colleges, universities and non-profits to surface the voice of GenZ and leaders in the AI and the Future of Work.



Gary A. Bolles , Chair for the Future of Work with Singularity University, Author of “The Next Rules of Work,” ecosystem transformation for non profits and Family Offices Founder SoCap, Next Colabs and more.



Andy Billings , Future Ready, developing leaders and organizations for a successful future. Former head of Profitability Creativity with Electronic Arts focused on 10X scaling. Also, a board member and advisor for multi-gen family enterprises.



Michael Loeb is Founder & CEO, Loeb.nyc | Entrepreneur | Redefining Venture Capital | Helping startups become a billion-dollar businesses. Michael invests in startups as part of his incubation center at his Mid town offices in NYC.