



INSPECTING DATA For

HONG KONG LIKA ELECTRONICS CO., LTD

ADAPTER/CHARGER/POWER SUPPLIER

Model No: 90W/GB-C15/GB19474

Prepared for : **HONG KONG LIKA ELECTRONICS CO., LTD**

Address : Rm. 1318-20, 13/F, Hollywood Plaza, 610 Nathan Road, Mongkok, Kowloon,
Hong Kong.

Prepared by : **Shenzhen BEL Technology CO., LTD.**

Address : 415# chuangye Building, No.7 chuangye 2 Road, 24 District Baoan, Shenzhen
Guangdong China

Report Number : **BEL201500009918**

Date of Test : Jun. 15 - Jun. 23, 2015

Date of Report : Jun. 23, 2015

This Test Report is issued by the Company subject to its General Conditions of Service printed overleaf. Attention is drawn to the limitations of liability, indemnification and jurisdictional issues defined therein. The results shown in this test report refer only to the sample(s) tested unless otherwise stated. This Test Report cannot be reproduced, except in full, without prior written permission of the Company.



SAMPLE INFORMATION:

1. Sample Description: **ADAPTER/CHARGER/POWER SUPPLIER**
2. Trade Mark: **N/A**
3. Model, Specification, Grade: **90W/GB-C15/GB19474**
4. Serial/Batch No of Sample: -----
5. Manufactured Date: -----
6. Manufacturer:**HONG KONG LIKA ELECTRONICS CO., LTD**

Manufacturer Address: Rm. 1318-20, 13/F, Hollywood Plaza, 610 Nathan Road, Mongkok, Kowloon, Hong Kong.

CLIENT INFORMATION:

1. Applicant:**HONG KONG LIKA ELECTRONICS CO., LTD**

Applicant Address: Rm. 1318-20, 13/F, Hollywood Plaza, 610 Nathan Road, Mongkok, Kowloon, Hong Kong.

2. Applicant Post Code: -----
3. Applicant Telephone:
4. Test Standards:

2011/65/EU; EN62321:2012,EPA3550C:2007,EPA8270D:2007

REMARKS:

1. The test data obtained and the report issued by laboratories other than BEL are provided by the applicant to us for data consolidation purposes. The report shall not be reproduced in part without written approval of us.
2. Characterization & Condition of sample: Normal.
3. Ambient Condition During Testing: (15~22) °C (20~40) % RH



Approved by:

Davis

Aiken



TABLE OF CONTENTS3

GENERAL INFORMATION1

MODIFICATION LIST2

1. INFORMATION.....4

 1.1. Name of the sample.....2

 1.2. Applicant/Address1

 1.3. INFORMATION4

2. LIST AND TEST DATA SUMMARY5

 2.1. List.....5

 2.2. Test data summary.....6

3. PHOTOGRAPHS OF TEST SAMPLE.....8

 3.1. Photo of Test Product.....8

**INFORMATION**

Name of the Sample : **ADAPTER/CHARGER/POWER SUPPLIER**
Applicant/Address : HONG KONG LIKA ELECTRONICS CO., LTD
Rm. 1318-20, 13/F, Hollywood Plaza, 610 Nathan Road, Mongkok,
Kowloon, Hong Kong.

Sample Received Date : Jun. 23, 2015
Test Completed Date : Jun. 15 - Jun. 23, 2015
Test Report : BEL201500009918

No	Report No.	Issue date
1	CANEC1305275003	2013.12.20
2	CANEC1305275005	2013.12.20
3	CANEC1305275007	2013.12.20
4	CANEC1305275001	2013.12.20
5	CANEC1302815502	2013.07.06
6	1302263-113	2013.03.04
7	CE/2013/63360	2013.06.19
8	CANEC1205564401	2012.11.17
9	CE/2014/11736A	2014.01.14
10	GZ1311132487/CHEM	2013.11.25
11	CANEC1430030202	2014.01.10
12	RLSZD000786740001C	2014.01.13
13	GZ1311135401/CHEM	2013.11.30
14	GZ1305111292/CHEM	2013.06.02
15	CE/2013/72638	2013/07/18
16	CANEC1400413503	2014/02/27
17	SH1345859/CHEM	2013/04/08

Result : Please refer to next page.

Conclusion : The results shown on the report do not exceed the limit in commission decision of 01 Jul 2011 amending Directive 2011/65/EU (RoHS) notified under document 2005/618/EC.



LIST

No.	Part Name	Testing Organizatio	Supplier
1	RESISTORS	SGS	UNIROYAL ELECTRONICS INDUSTRY CO.,LTD.
2	DIODES	SGS	TA-I TECHNOLOGY CO.,LTD.
3	MULTI-LAYER CERAMIC CAPACITOR	SGS	SKYWELL ELECTRONICS CORP.
4	PLASTIC ENCAPSULATE INTEGRATED CIRCUIT	SGS	ON-BRIGHT ELECTRONICS(SHANGHAI)CO.,LTD.
5	PLASTIC LAMP HOLDER	SGS	PAN JIT GROUP&PAN JIT INTERNATIONAL INC.
6	IC	SGS	CHINO-EXCEL TECHNOLOGY CORP.
7	BRIDGE RECTIFIER-PLASTIC BODY	SGS	SEMIECH ELECTRONICS LIMITED
8	LINE	SGS	DONGGUAN ANDU ELECTRONICS CO.,LTD
9	PCB	SGS	DONGGUAN HUAXING CIRCUIT BOARD FACTORY
10	ALUMINUM ELECTROLYTIC CAPACITORS	SGS	BAOHUA ELECTRONICS CO.,LTD
11	SCREWC	SGS	TAI-TECHNOLOGY CO.,LTD.
12	COPPER SUPPORT	SGS	CHANGZHOU GALAXY ELECTRICAL CO.,LTD.
13	HIGH POWER LED CHIPS	SGS	BRIDGELUX INC.
14	NIPPON GOLD WIRE	SGS	CHROMA NEW MATERIAL CORP.
15	ALUMINUM ALLOY RADIATOR	SGS	KENLY PRECISION INDUSTRIAL CO.,LTD.
16	NO PLUMBUM SOLDER PASTER	SGS	DONGGUAN CITY YUE CHENG TIN CO.,LTD.
17	TRANSFORMER	SGS	DONGGUAN HUANG JIANG MAX TRON ELECTRONICS FACTORY



TEST DATA SUMMARY

Test items	HBCDD	DEHP	DBP	BBP	PBBs
Unit	ppm	ppm	ppm	ppm	ppm
1	N.D.	N.D.	N.D.	N.D.	N.D.
2	N.D.	N.D.	N.D.	N.D.	N.D.
3	N.D.	N.D.	N.D.	N.D.	N.D.
4	N.D.	N.D.	N.D.	N.D.	N.D.
5	N.D.	N.A.	N.D.	N.D.	N.D.
6	N.D.	N.D.	N.D.	N.D.	N.D.
7	N.D.	N.D.	N.D.	N.D.	N.D.
8	N.D.	N.D.	N.D.	N.D.	N.D.
9	N.D.	N.D.	N.D.	N.D.	N.D.
10	N.D.	N.D.	N.A.	N.D.	N.D.
11	N.D.	N.D.	N.D.	N.D.	N.D.
12	N.D.	N.D.	N.D.	N.D.	N.A.
13	N.D.	N.D.	N.D.	N.D.	N.D.
14	N.D.	N.D.	N.D.	N.D.	N.D.
15	N.D.	N.D.	N.D.	N.D.	N.A.
16	N.D.	N.D.	N.D.	N.D.	N.D.
17	N.D.	N.D.	N.D.	N.D.	N.D.



Test items	Lead(Pb)	Cadmium (Cd)	Mercury (Hg)	Hexavalent Chromium Cr(VI)	PBDEs
Unit	ppm	ppm	ppm	ppm	ppm
1	N.D.	N.D.	N.D.	N.D.	N.D.
2	N.D.	N.D.	N.D.	N.D.	N.D.
3	N.D.	N.D.	N.D.	N.D.	N.D.
4	N.D.	N.D.	N.D.	N.D.	N.D.
5	N.D.	N.D.	N.D.	N.D.	N.D.
6	N.D.	N.D.	N.D.	N.D.	N.D.
7	N.D.	N.D.	N.D.	N.D.	N.D.
8	N.D.	N.D.	N.D.	N.D.	N.D.
9	N.D.	N.D.	N.D.	N.D.	N.D.
10	N.D.	N.D.	N.A.	N.D.	N.D.
11	N.D.	N.D.	N.D.	N.D.	N.D.
12	N.D.	N.D.	N.D.	N.D.	N.A.
13	N.D.	N.D.	N.D.	N.D.	N.D.
14	N.D.	N.D.	N.D.	N.D.	N.D.
15	N.D.	N.D.	N.D.	N.D.	N.A.
16	N.D.	N.D.	N.D.	N.D.	N.D.
17	N.D.	N.D.	N.D.	N.D.	N.D.

NOTE:

- (1) N.D. = not detected (<MDL) (2) P =Test object does meet the requirement (3) ppm = mg/kg
(4) N.A.=Not Analyzed

Disclaimer:

- ★ The integration report is not equivalent to the test report.
- ★ BEL does not shoulder responsibility for the authenticity of all the test data listed in integration report, which are submitted by the applicants.
- ★ The applicants are responsible for all the legal obligation caused by the inaccuracy and invalidity of the original report.
- ★ If this disclaimer contradicts any other terms and conditions of BEL, this disclaimer will prevail.

RoHS

PHOTOGRAPHS OF TEST SAMPLE

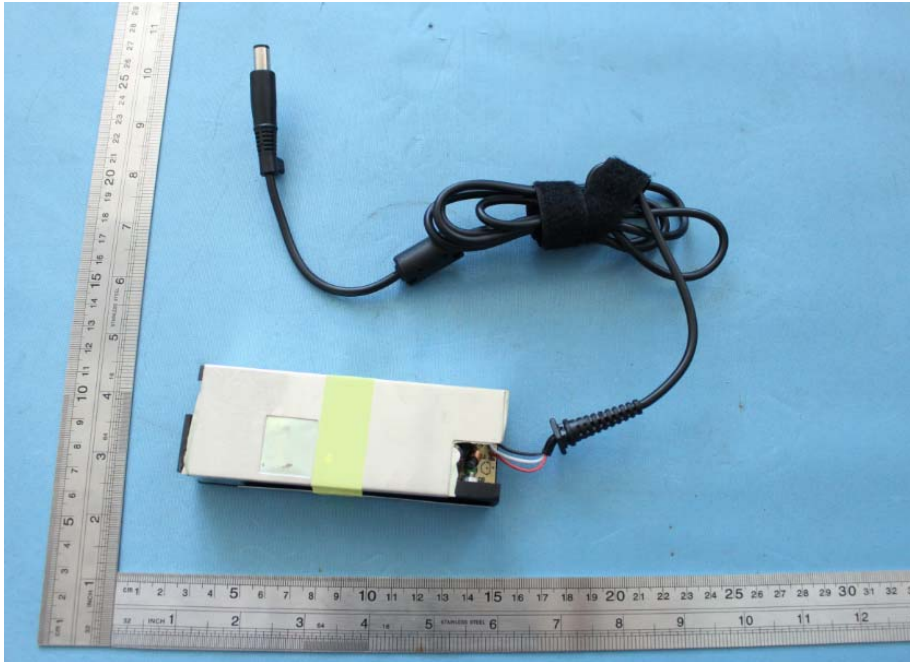
EUT Photo 1



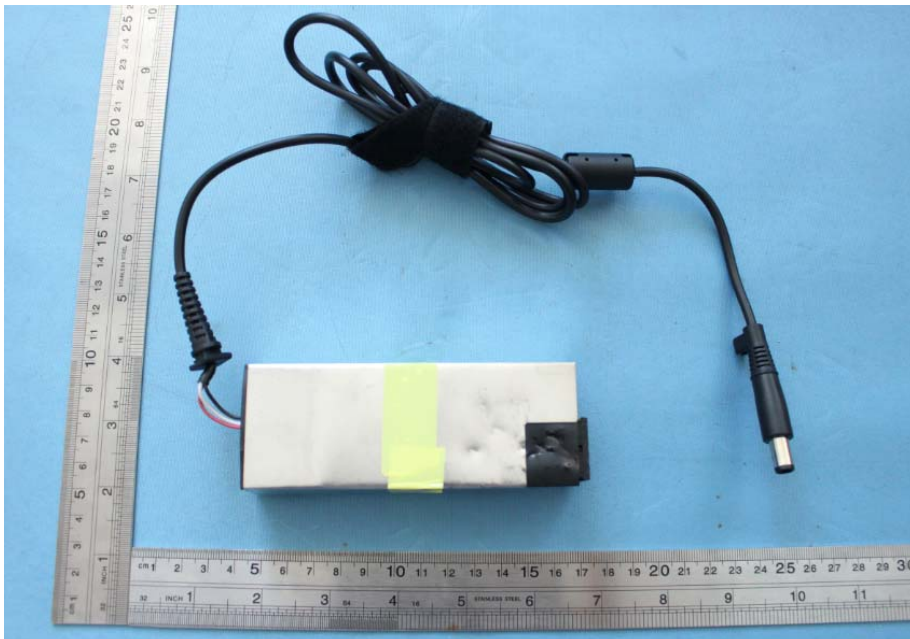
EUT Photo 2



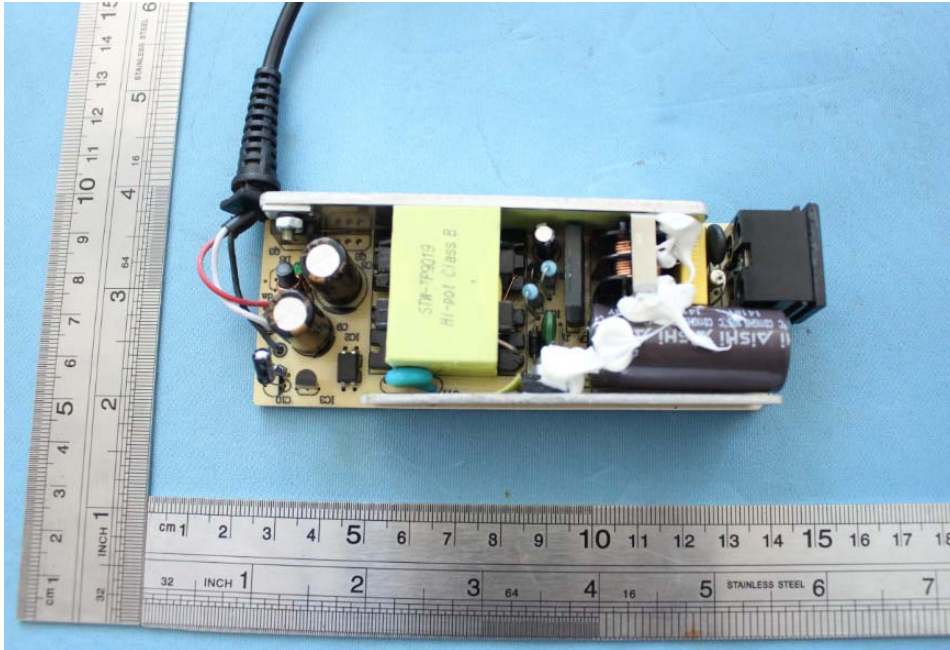
EUT Photo 3



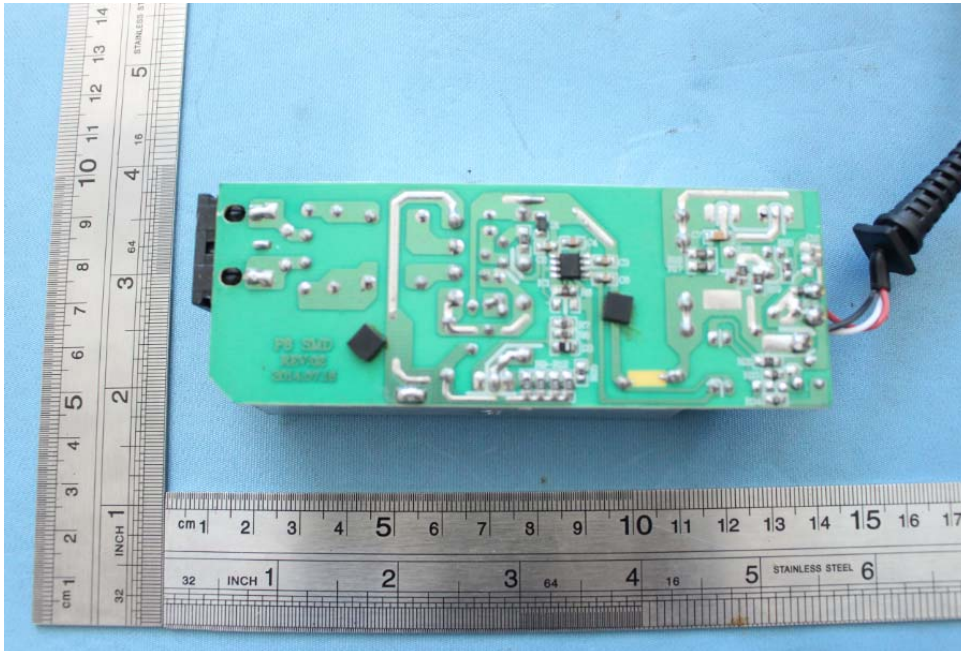
EUT Photo 4



EUT Photo 5



EUT Photo 6



***** END OF REPORT *****