



Thru-Wall Flashing System

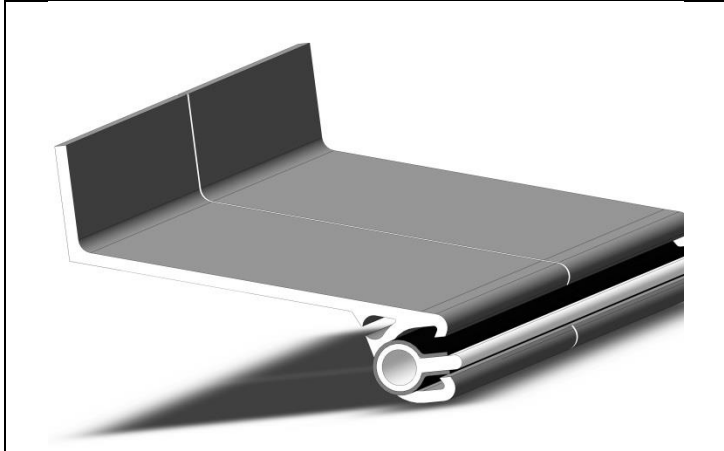
Flash Trac, Inc.

"NO FLASHING BEFORE IT'S TIME"

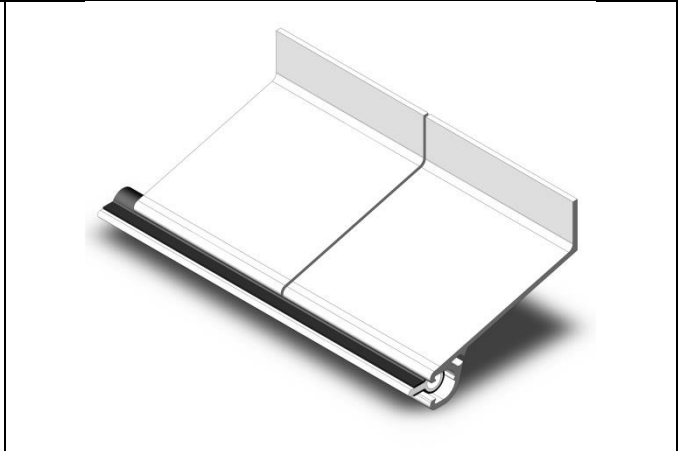
INSTALLATION SHEET

www.flashtracsystems.com

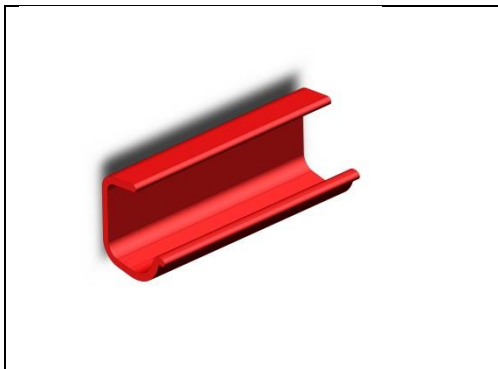
Flash Trac Components



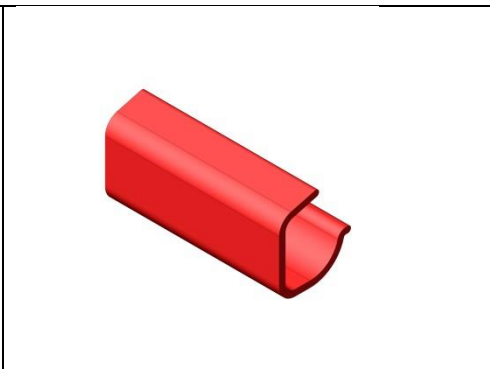
Flash Trac Receiver with Rod



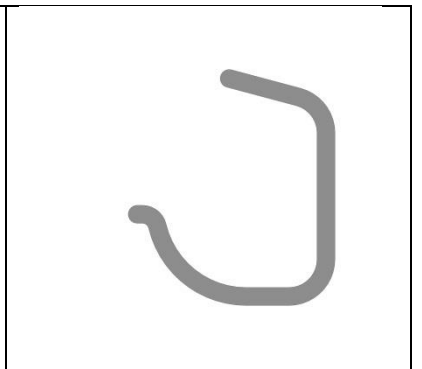
Flash Trac Receiver with Rod



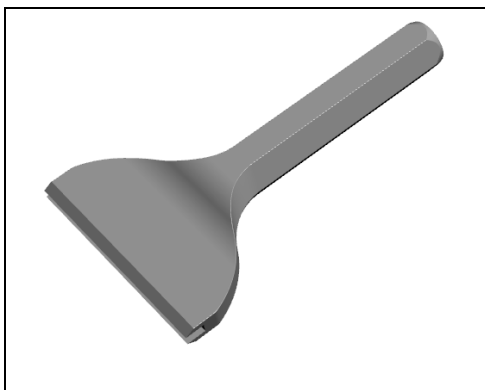
Alignment Clip Front View



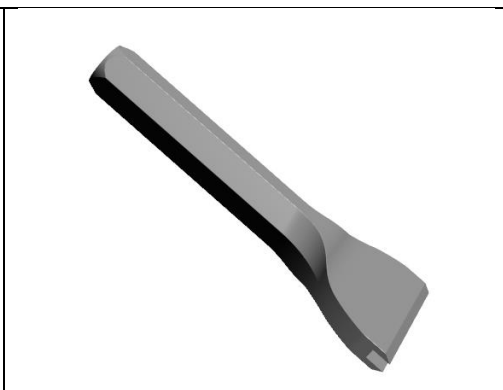
Alignment Clip Rear View



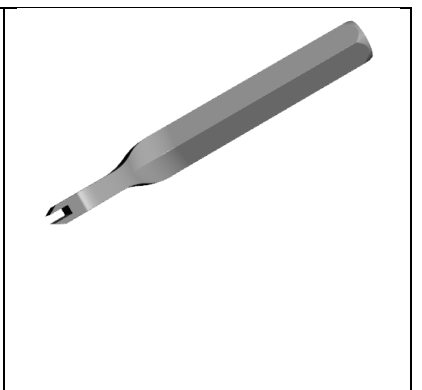
Alignment Clip Side View



Installation Tool Top View



Installation Tool Side View



Installation Tool Side View



Thru-Wall Flashing System

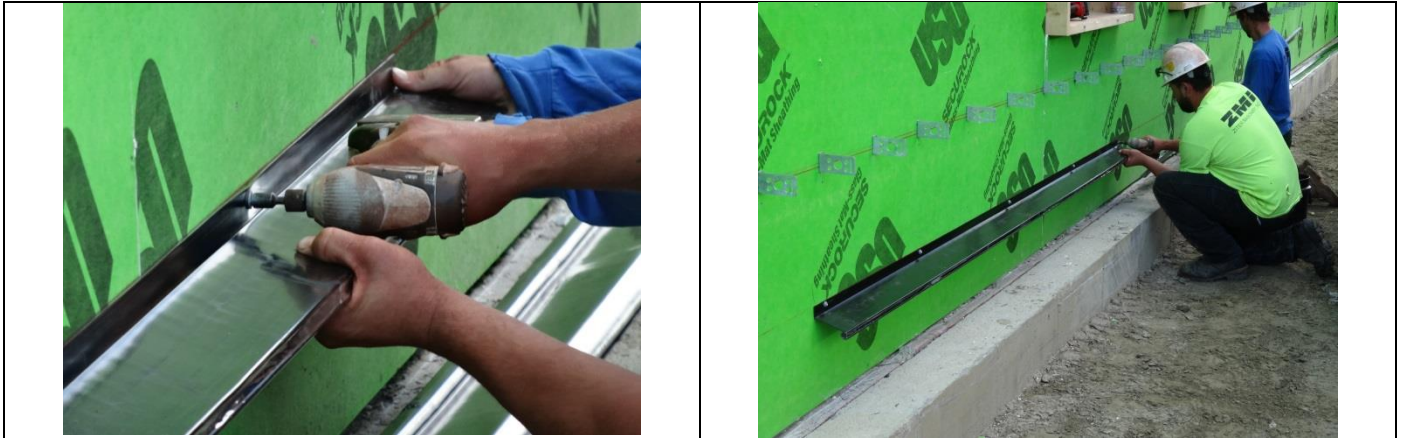
Flash Trac, Inc.

"NO FLASHING BEFORE IT'S TIME"

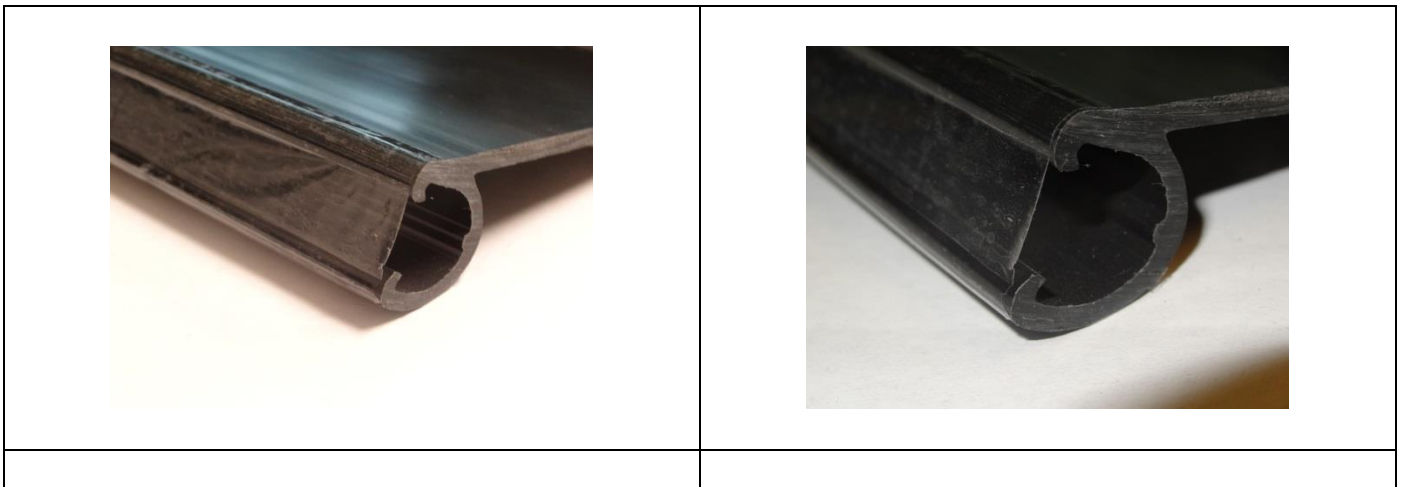
INSTALLATION SHEET

www.flashtracsystems.com

Flash Trac™ System Installation



The Flash Trac™ System is an extruded plastic through wall flashing receiver. Flash Trac™ simply attaches to the exterior sheathing. It is designed to be installed before any spray foam insulation is installed. This enables the flashing to be installed after spray foaming occurs preventing distortion and contamination. The Flash Trac™ System works with most flashing materials.



Note: Flash Trac comes with a piece of protective tape applied across the opening. **DO NOT** remove this tape until all spray foaming has been completed! It is preferable to wait until you are actually ready to install the flashing material. It is recommended that the protective tape be patched or re-taped if it becomes damaged or broken prior to spraying operations. This protective tape prevents insulation and other debris from accumulating in the groove which would require removal prior to the installation of the membrane and rod holder.



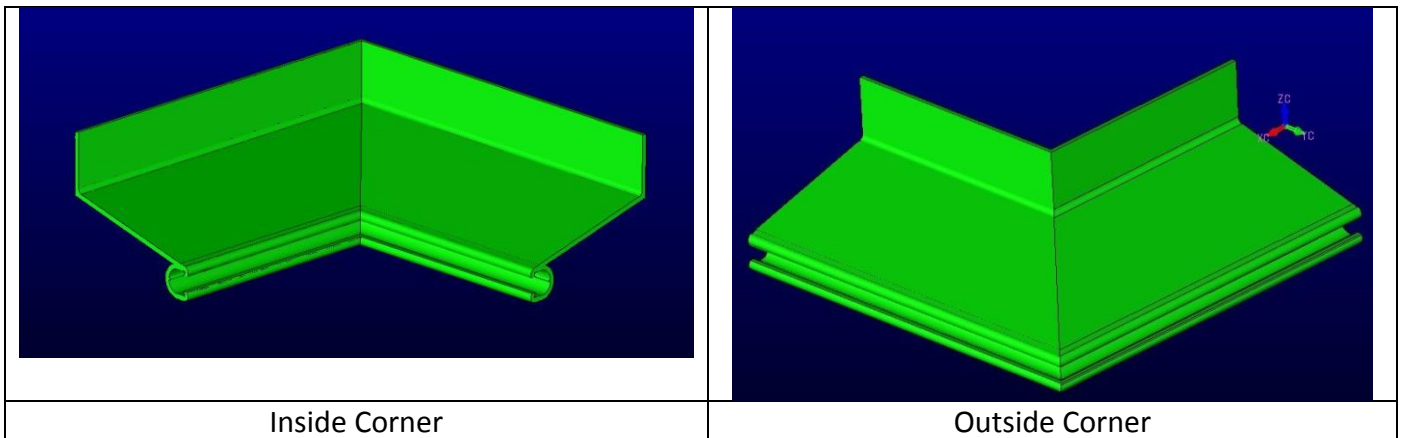
Installing the wall bracket/receiver

The wall bracket/receiver, hereafter referred to as the "receiver" is attached to the sheathing using self-tapping screws such as are normally used when attaching the wall brackets. Fasteners with a hex washer head can also be used. It is not necessary to use a washer on the fastener, but using one helps the installer to know when the track is tight against the sheathing because the washer will start to deform.

It is recommended that screws be installed every 16 to 24 inches depending on studding. Small pieces should have at least two and preferably three screws installed.

If 18" flashing is used the receiver would be installed from 9" – 11" above the shelf/angle to the top of the opening where the rod is inserted. This wall make up would be 4" veneer, 1" – 3" clear space, 9" – 11" vertical flashing and 2" of flashing to wrap around the retaining rod.

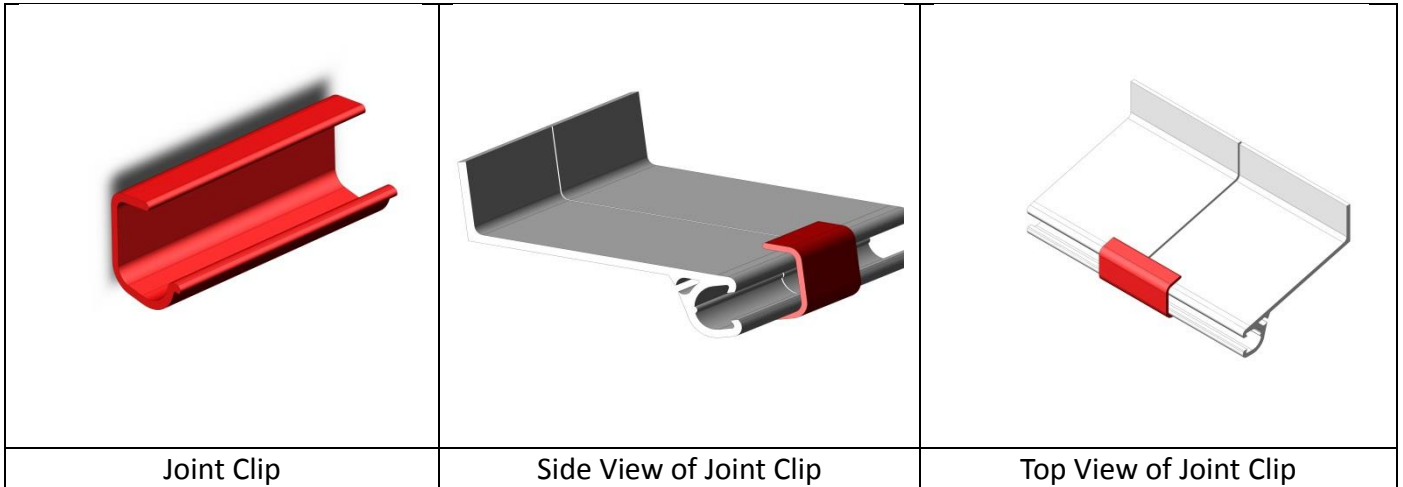
If 24" flashing was used the receiver would be installed from 15" – 17" above the shelf/angle. This wall make up would be 4" veneer, 1" – 3" clear space, 15" – 17" flashing height and 2" of flashing to wrap around the retaining rod.



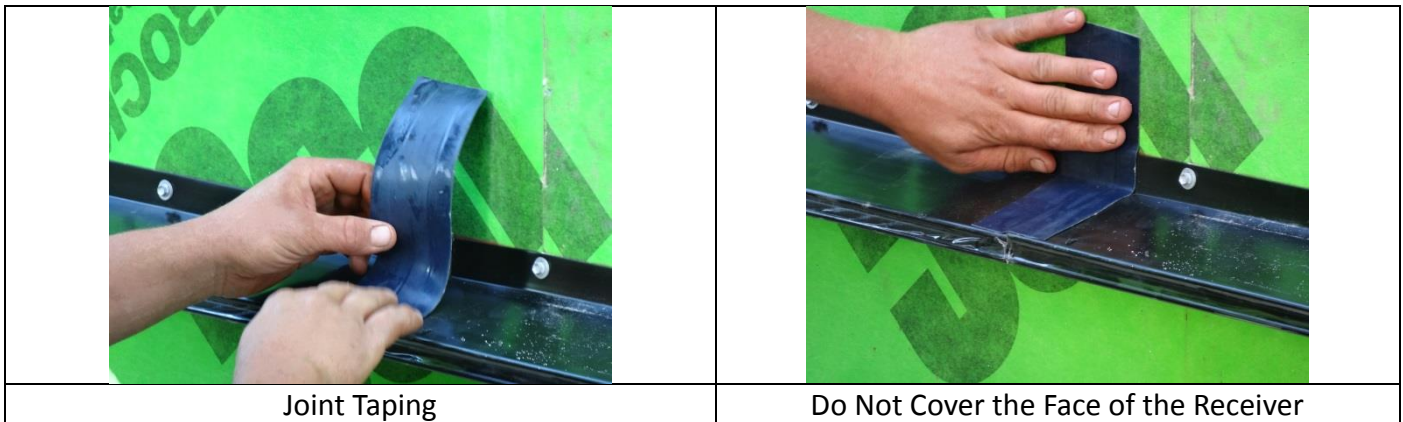
Making corners

Corners can be cut in the field using a miter or chop saw. Inside and outside corners can also be ordered from Flash Trac pre-cut. Presently, the corners are separate pieces. A molded one-piece corner is in development. In order to cut the corners so that they will properly line up, a 15 degree template should be cut and placed on the table of the saw. The joints on the corners are also taped.

Joining multiple pieces of Flash Trac



When installing two or more pieces of Flash Trac receiver, each piece should be butted end to end. The face of each joint should have a joint clip installed on the face of the track to help hold the two pieces aligned. **DO NOT** tape the clip to the receiver. This clip will be removed prior to the rod being inserted.



The seam should be taped using a tape recommended by the membrane flashing manufacturer, or a tape known to be compatible with the type of membrane flashing being used. Flash Trac components are not affected by any type of tape.

Once the insulation has been applied, remove or cut the tape covering the jaw of the receiver. If necessary, clean the area in front of the jaw of the receiver of any overspray of insulation.

Installing the membrane flashing



Thru-Wall Flashing System

Flash Trac, Inc.

"NO FLASHING BEFORE IT'S TIME"

INSTALLATION SHEET

www.flashtracsystems.com

There is no set procedure for installing the membrane into the Flash Trac receiver. Each set of operators will develop their own system that works best for them. It may seem awkward at first but after a short time the operators will have it worked out. The key is to not get frustrated. We have included a system that some use that seems to work well.

- Begin by rolling the membrane out for several feet.
- Two operators can lift the membrane up with the bottom edge of the membrane approximately 3 inches below the bottom of the jaw of the receiver.
- A third operator can place the rod over the front of the flashing.
- Insert the jaw of the installation tool over the raised ridge of the rod.
- Give the installation tool a brisk strike with a hammer to set the membrane in the jaw of the receiver.
- Once the membrane is set, the operator with the hammer and installation tool can move down the line striking the installation tool and installing the membrane.
- As the installation progresses, the two operators holding the membrane will move in succession with the installer until the wall is completed.
- The membrane will be allowed to fall as the operators move down the wall.
- At the end of the run, you will have a row of perfectly installed membrane with no contamination.
- If the membrane roll runs out, a new roll can be started. Simply overlap the old roll and the new roll by about two inches. The receiver will accommodate the overlap.