

# 7

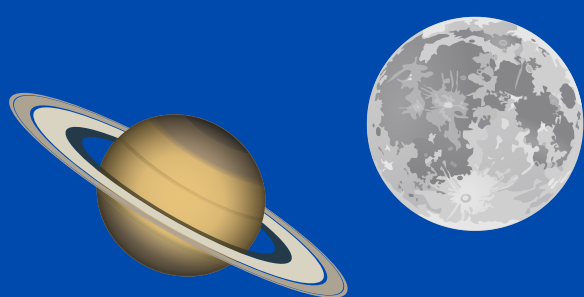
# SPACE EVENTS- NOVEMBER

Astronomy & rockets

## 01

### THE MOON AND SATURN

4 degrees apart from one another in the early evening sky at 5pm EDT, facing southeast.



## 04

### THE MOON AND NEPTUNE

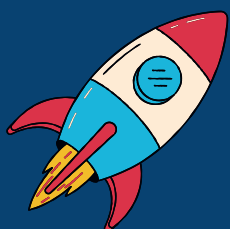
- 3 degrees apart
- 4am EDT
- Facing West



## 06

### ANTARES ROCKET LAUNCH

- NG-18
- Northrop Grumman's Antares Rocket
- 5:50am EST (happy end of daylight savings, we are now in standard time)
- Wallops Island, VA



## 08

### TOTAL LUNAR ECLIPSE

Happening at 6am EST, visible in North America face your Western horizon to catch our Moon in deep copper hues aka a Blood Moon.

Moon rises at 6pm, penumbral eclipse begins 3:02am, partial eclipse begins 4:09am, Total eclipse begins 5:16am, Total eclipse ends 6:41am, partial eclipse ends 7:49am, Moon sets 8:05am. (all EST)

## 08

### PLEIADES AND MARS

While you catch the lunar eclipse, be sure to look only a few degrees north of the Moon to catch Mars, and once the Moon starts to become eclipsed it might be dim enough to also catch the Pleiades open star cluster just below Mars! 6am EST, facing West.

## 17

### LEONID METEOR SHOWER

The Leonid meteor shower peaks tonight! Looking about 72 degrees about your southeastern horizon at 6am you might catch a meteor or two, if you're in favorable conditions (minimal light pollution, clear skies, minimal moonlight).

## 28

### ENDING WITH THE MOON & SATURN AGAIN

The Moon will be passing 4 degrees south of Saturn at midnight EST.