



# Resort Lifestyle

Now In Sonapat  
Near North West Delhi

HRERA APPROVED  
SNP-198/2020







# Resort Living

## First Time in Sonapat

*Imagine a place where you can do more than stay, LIVE.*

*Rejuvenate, Rejoice And Restore your life in a resort lifestyle.*



Swiming Pool





# WELCOME TO A GRANDEUR LIFE The One You Were Always Meant To Live...

*Plush, intimate, serene, sophisticated, and fresh resort lifestyle now  
welcomes you in Sonepat.*





## **“Place of Your Dreams”**

*Surround yourself with the finest of amenities and discover a life of luxury and convenience right at home. A place designed to provide you with experience of the best of what life has to offer.*











## Perfect Balance of Nature and Beauty

*Spread over approximately 11.687 acres of land, White lily residency is well connected to Delhi NCR. Situated on NH-1, near one of the fastest growing cities in Northern India, Sonapat, Haryana.*







3D representation of original look





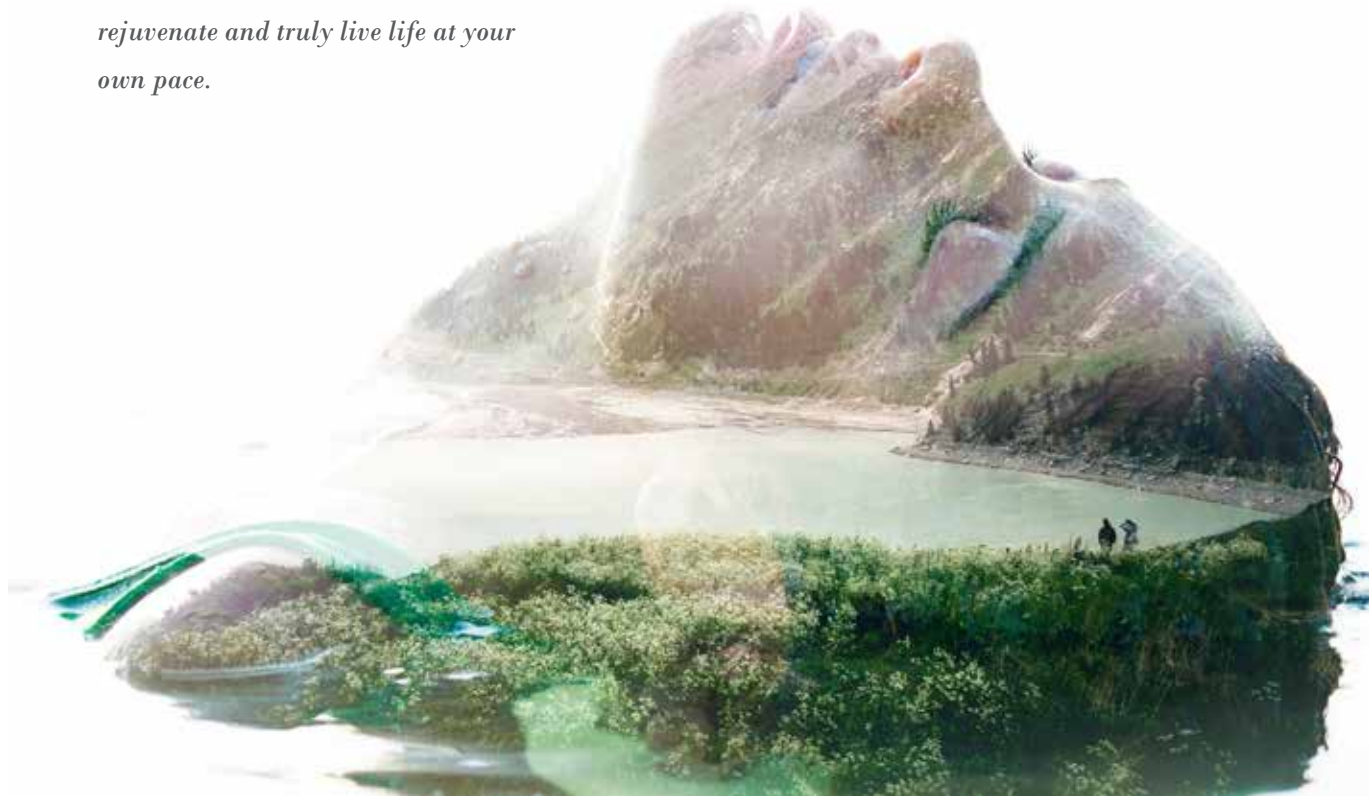
## Invest in the Serenity

*Refresh your mind and soul by swimming across the SHIMMERING Sanctuary that helps you unwind and loosen up every day.*

## Essence of the Nature

*Soak in the goodness of all things natural and experience soul soothing massages within the premises.*

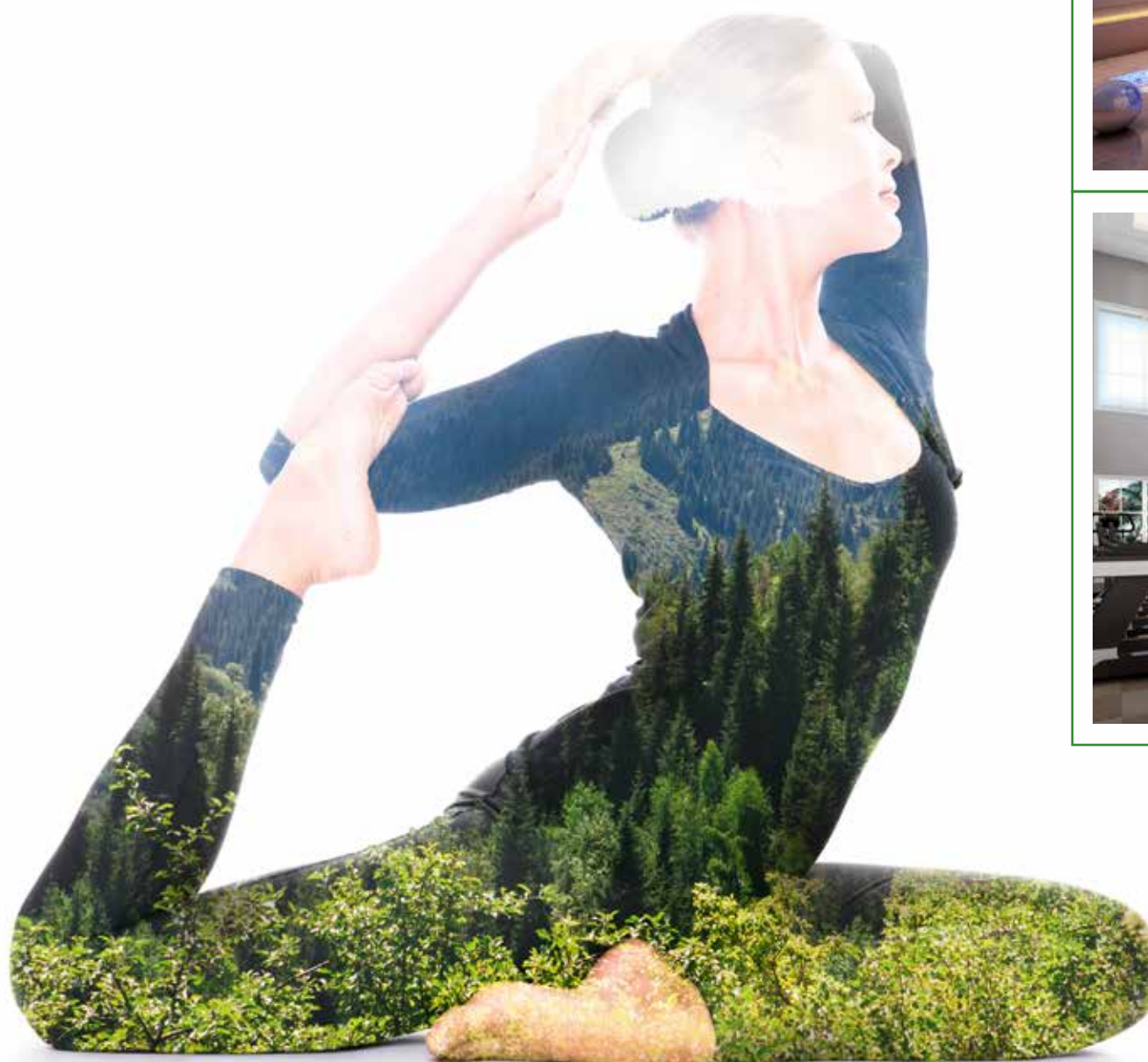
*Recreational jacuzzi to help you relax, rejuvenate and truly live life at your own pace.*





## Wellness & Fitness at your Door Steps

*Maintain your well being with best the fitness facilities to help you reach your fitness goal.*



Yoga Room



GYM & Health Club



## Space to be You and Enjoy Greenery at its Best

*With nature by your side, you can cycle for a while. Rejoicing and connecting with your inner child.*



Children's  
Adventure Park



Cycling Track





## A Clubhouse for Your Indulgence

*Designed to create a community our  
clubhouse with a variety of fun  
activities and urbane amenities.*



Table Tennis



Billiards

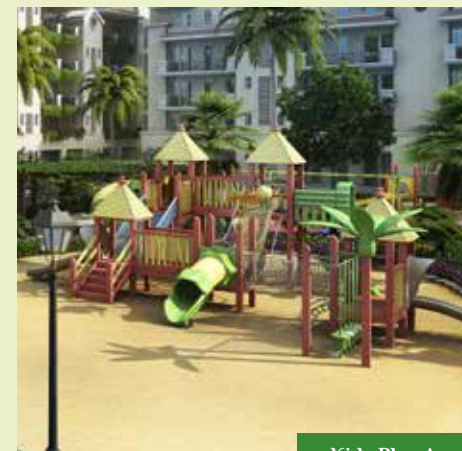


Basket Ball





Tennis Court



Kids Play Area

**Now reach your Fitness Goals by Working Hard on Court.**

**Cycling** - *To let loose and enjoy fitness on those wheels.*

**Children's Adventure Park** - *For Every kid's day is incomplete without going outdoor.*

**Basket Ball** - *Dunk Some baskets if love basketball.*









## Vision of Grandeur at Your Door

*White Lily Residency comes with elite amenities like banquets and fine dining places to provide you with an Ultimate Indulgence.*



Banquet



## Make Every Moment Unforgettable

*Designed to encapsulate life with fine dining design and architecture to provide the comfort and leisure of life.*





## Make every moment unforgettable

*White Lily Residency comes with elite amenities like banquets and fine dining places to provide you with an Ultimate Indulgence.*



School



Grocery Store



Beauty Parlour





मुख्यमंत्री मनोहर लाल खी अध्यक्षता में कैबिनेट ने लिया फैसला  
**पानीपत-नई दिल्ली रैपिड रेल कॉरिडोर को मंजूरी, सिर्फ 45 मिनट की होगी दूरी**

नगरपालिका, जीए.डी.डी. 1, पानीपत में स्थित 'पानीपत-नई दिल्ली रैपिड रेल कॉरिडोर' को मंजूरी देते हुए कैबिनेट ने फैसला किया। यह रेल कॉरिडोर पानीपत से नई दिल्ली तक 45 मिनट की दूरी को कम करेगा।

**मानेसर में नगर निगम बनाने को हरी झंडी**

नगरपालिका, जीए.डी.डी. 1, पानीपत में स्थित 'मानेसर में नगर निगम' को मंजूरी देते हुए कैबिनेट ने फैसला किया। यह नगर निगम मानेसर में 45 मिनट की दूरी को कम करेगा।

**Metro for purposed 5 km is a part of the plan.**

| The Location is 20 min from Delhi Border

| 30 minutes from Kashmere Gate by forthcoming Rapid Transport Corridor

| 30 minutes drive from International Airport by KMP Expressway, nearing completion 30 minutes drive from Pitampura - Rohini

## The Location

*Located near NH-1 and KMP Expressway, White Lily Residency is on the vertex of the fastest developing zone in the region.*

*With the upcoming Rapid Rail Transit System, and many mega-crore projects in the region, Sonapat is the next Gurgaon in making. RRTS will reduce the travel from Sonapat to Kashmere Gate, Delhi to 20 minutes and international Airport will be able to reach within 20 minutes drive from White Lily Residency.*

*The 5000 acres Rajiv Gandhi Education City will have All major education disciplines under one campus.*

## Location Near Residency

• Railway Station (10 Min Drive)

• Post Office (10 Min Drive)

• Hotel (5 Min Drive)

• Hospital (5 Min Drive)

• Police Station (2 Min Drive)

• Bus Stand (10 Min Drive)

• Shopping Complex (5 Min Drive)

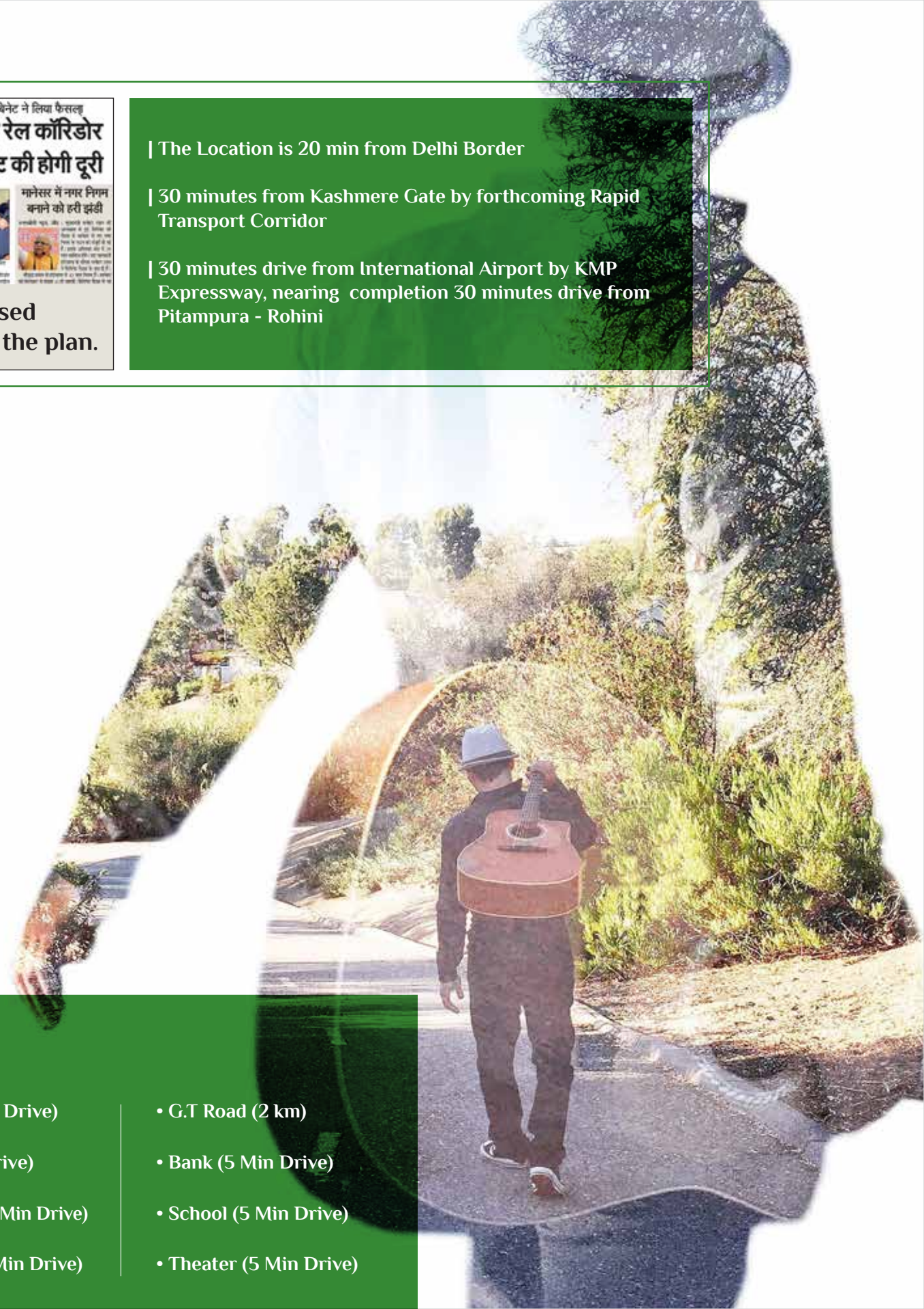
• National Stadium (5 Min Drive)

• G.T Road (2 km)

• Bank (5 Min Drive)

• School (5 Min Drive)

• Theater (5 Min Drive)







## ACCOMMODATION

2,3 and 4 Bedroom, Drawing/  
Dining Kitchen and Toilet.

### FLOORING

#### DRAWING / DINING & BEDROOMS:

Marble / Vitrified flooring. Wooden  
flooring in Master Bedroom.

**TOILET :** Anti-skid ceramics tiles.

**KITCHEN :** Ceramic tiles.



## KITCHEN

Stainless steel sink with drain board.

Granite counter in kitchen.

Glazed tile dado on wall up to 2 ft.  
Over counter.



## BATHROOM

Jaguar/Parry ware or equivalent  
fittings, washbasin, mirror and  
WCs in different shades. Chrome  
plated bath fitting of Jaguar / Marc  
/ Parko or equivalent make.

### DADO

Coloured Glazed/ Ceramic tiles up  
to 7ft. In bathroom



## FINISHING

### PAINT

Oil bound distemper in pleasing  
shades on walls.

### EXTERIOR

Permanent finish / textured paint.

### DOORS AND WINDOWS

Decorative and doors/windows from  
Masonite, Jeldwyn, Wooden or  
equivalent, Morties lock of Godrej or  
equivalent make. Aluminum powder  
coated window frames and fitting.



## ELECTRICAL

Copper wiring as per ISI code with  
modular switches. Circuits with  
MCBs of reputed make.

Sufficient light and power points.

TV and telephone points in every  
room.



## SECURITY

Guard room at main entrance  
for efficient manual vigilance.

Intercom

CCTV

Images are for representation



## SPECIFICATION



**ELEVATORS | CHANGES FOR THE BETTER.**  
Spacious, speedy and jerk proof elevators by **MITSUBISHI**



**ELECTRIC MODULAR SHEETS, SWITCHES AND MCB BY SCHNEIDER LIFE IS ON.**  
Beauty and safety join hands with **SCHNEIDER** switches and **MCBS**.



**INTERNAL CABLE WITH POLYCAB BRAND CONNECTION ZINDAGI KA.**  
Safe and shock proof Polycab wiring system.



**MODULAR KITCHEN BOLD IS BEAUTIFUL.**  
Robust modular kitchen design and conceptualization by **LOTUS**.



**WOODEN FLOORING TECHNOLOGY, ENVIRONMENTAL FRIENDLY, STRENGTH FROM ACTION.**  
The magnificence of wooden flooring depicted by **ACTION TESA**.



**MS & GI PIPES AN ISO 9001:2008 COMPANY.**  
Leak proof and ever lasting GI/MS Pipes by **JINDAL**.



**BATHROOM C.P. FITTING BY JAQUAR TOO GOOD TO RESIST**  
Sustainable bath fittings by **JAQUAR**.



**UPVC DOORS AND WINDOWS ENHANCE YOUR OUTLOOK**  
International style doors, Sound proof window by **WINDOW MAGIC**.



**CHINA WARE BY HINDWARE BATHROOMS YOU KEEP ADMIRING.**  
A galore of elegant and innovative designs by **HINDWARE**.



**VALVES ETC LEADERS IN VALVES.**  
Permanent fixture solution valves by **LEADERS**.



*Project Landscape Design*

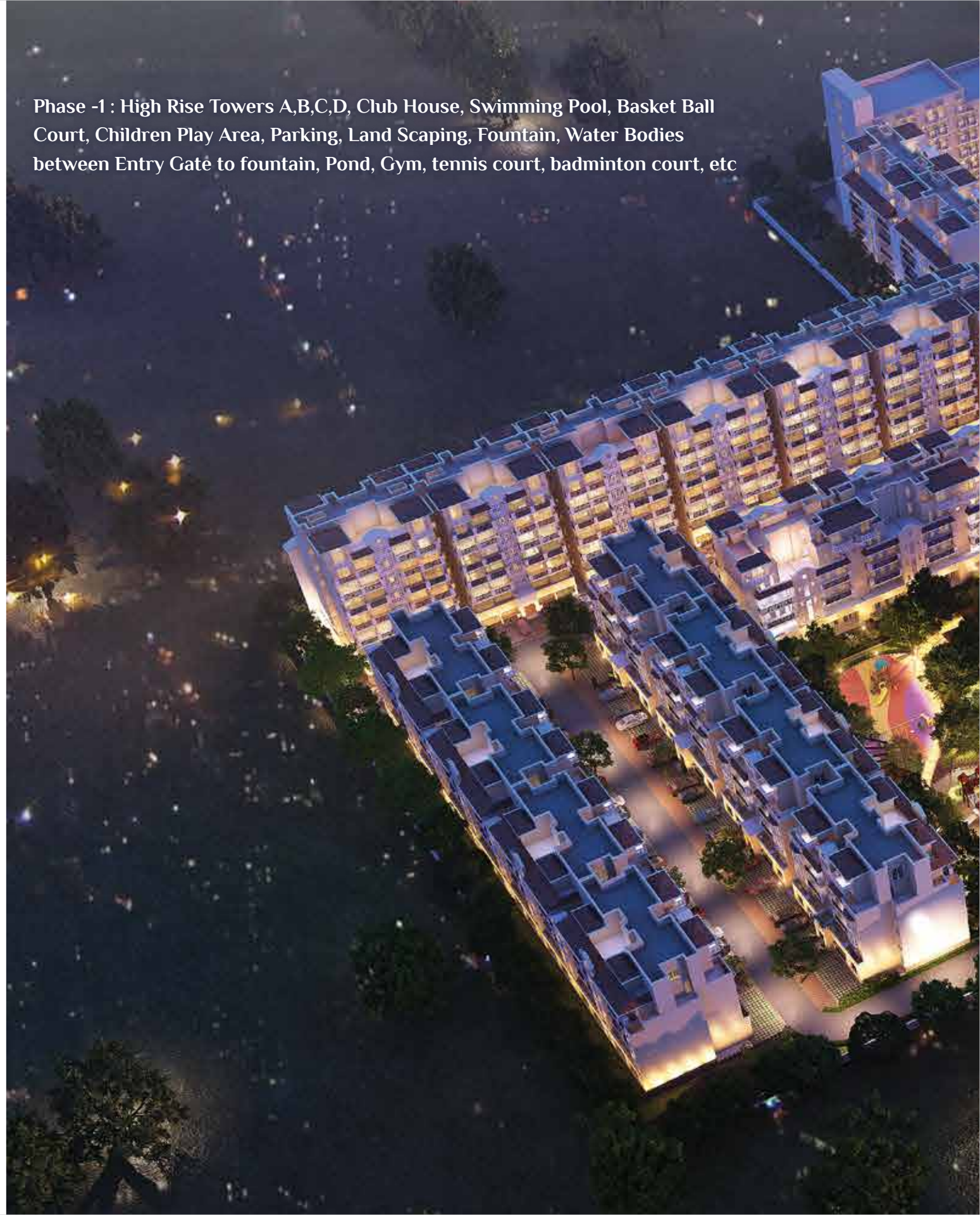
The products showcased in the brochure will be of the same brand or similar or equivalent brand.\*



## Amenities

- | Entry/ Exit
- | Driveway
- | Children's Adventure Park
- | Party Lawn
- | Tot lot Play Area
- | Entrance Pavillion
- | Lily Pond
- | Jogging park
- | Palm Grove
- | Main pool
- | SPA/Jacuzzi
- | Half Basketball Court
- | Tennis Court
- | Seater
- | Parking in Grasscrete
- | Perimeter Planting
- | Restaurant
- | Cafeteria
- | Banquet
- | GYM & Health Club
- | Billiard Table & Table Tennis Table
- | Yoga Room
- | Basket Ball
- | Lawn Tennis
- | Cycling Track
- | Badminton Court
- | Gymnastics Open Gym
- | Kids Play Area

Phase -1 : High Rise Towers A,B,C,D, Club House, Swimming Pool, Basket Ball Court, Children Play Area, Parking, Land Scaping, Fountain, Water Bodies between Entry Gate to fountain, Pond, Gym, tennis court, badminton court, etc







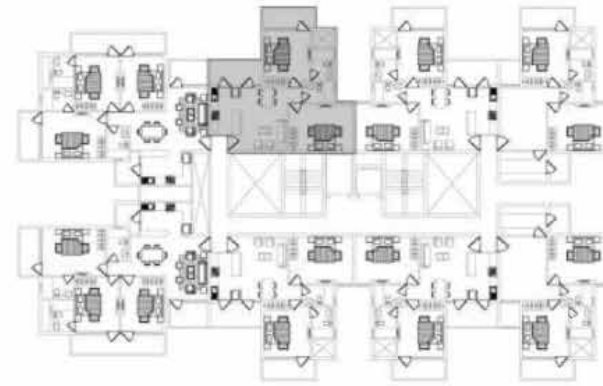




## 2 BHK APARTMENT

CARPET AREA: 672.00 SQ. FT.

BALCONY: 164.00 SQ. FT.



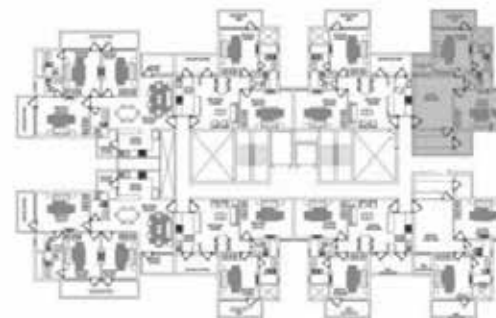
BLOCK PLAN



## 2 BHK APARTMENT

CARPET AREA: 657.00 SQ. FT.

BALCONY: 168.00 SQ. FT.



BLOCK PLAN



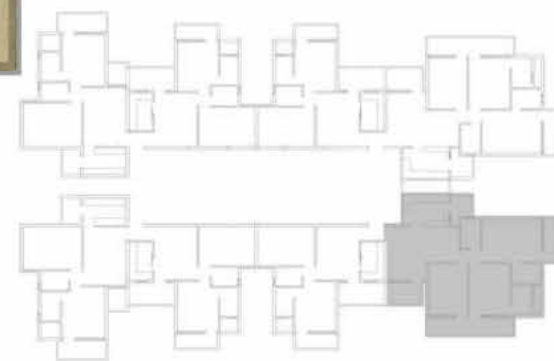




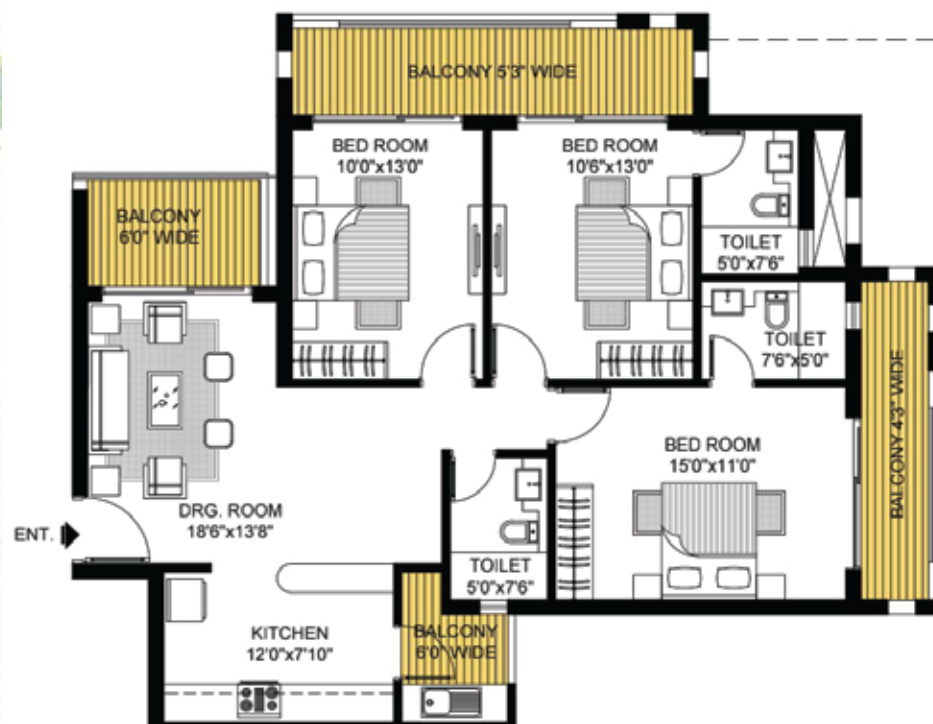
UNIT PLAN

### 3 BHK APARTMENT

CARPET AREA: 924.00 SQ. FT.  
BALCONY: 292.00 SQ. FT.

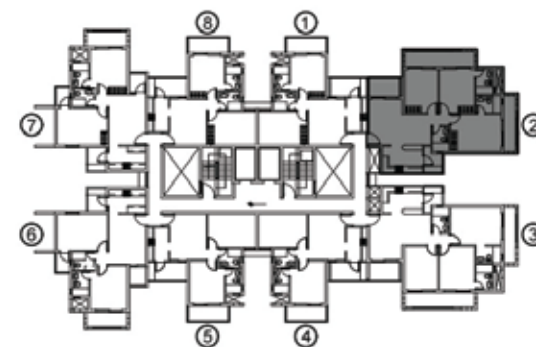


BLOCK PLAN



### 3 BHK APARTMENT

CARPET AREA: 909.00 SQ. FT.  
BALCONY: 292.00 SQ. FT.





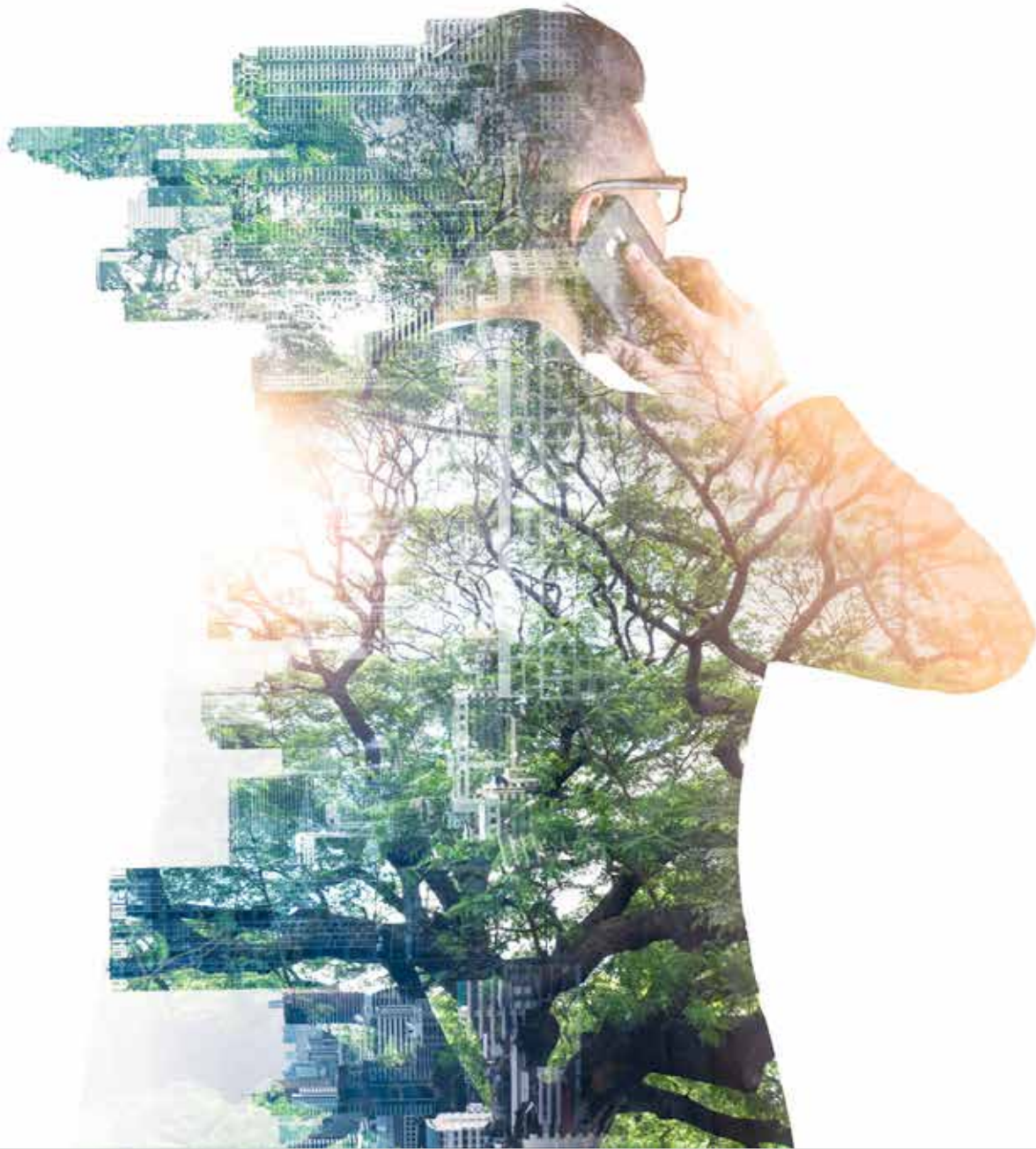




## CONSTRUCTION IN FULL SWING

*At present, The construction of “White Lily Residency” is going on, in full swing and the Phase-1 of the project is most likely to be Completed in 2022.*

*We hereby request you to visit the site and review the status of Project.*



Actual Image

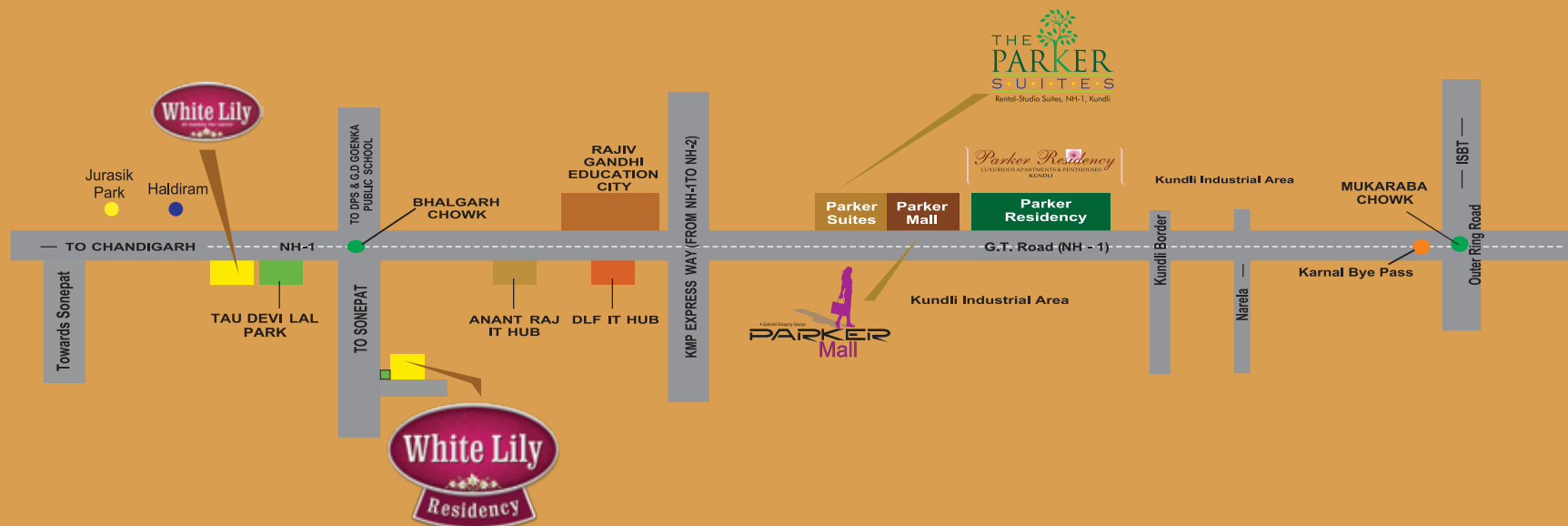


Actual Image



Actual Image





JOINT VENTURE OF PARKER VRC JAI KRISHAN ARTEC JV.



## PARKER VRC INFRASTRUCTURE PVT. LTD.

Parker Mall, Sector-62, GT-Road, NH-1, Kundli, Distt. Sonipat (Haryana)

Email: parkervrcinfo@yahoo.com | Website: www.parkervrc.com

Contact No. +91 9311032200, +91 9711117825, +91 9891043310



Note: Visual representations shown in this brochure are purely conceptual. All Building Plans, Specifications, Layout Plans, etc. are tentative and subject to variation & modification by the company or the competent authorities sanctioning plans. Brands names appearing in the brochure are for artwork purposes only.

Approved Group Housing Project Licence No. 292/2007 dt. 31.12.2007 vide approved Building Plan Memo No. 55808 dt. 31.10.2013