

AREA SUMMARY	
TOTAL A/C LIVING AREA:	1640.00 SQ FT
ENTRANCE:	58.00 SQ FT
GARAGE:	442.00 SQ FT
LANAI:	197.00 SQ FT
TOTAL UNDER ROOF:	2337.00 SQ FT

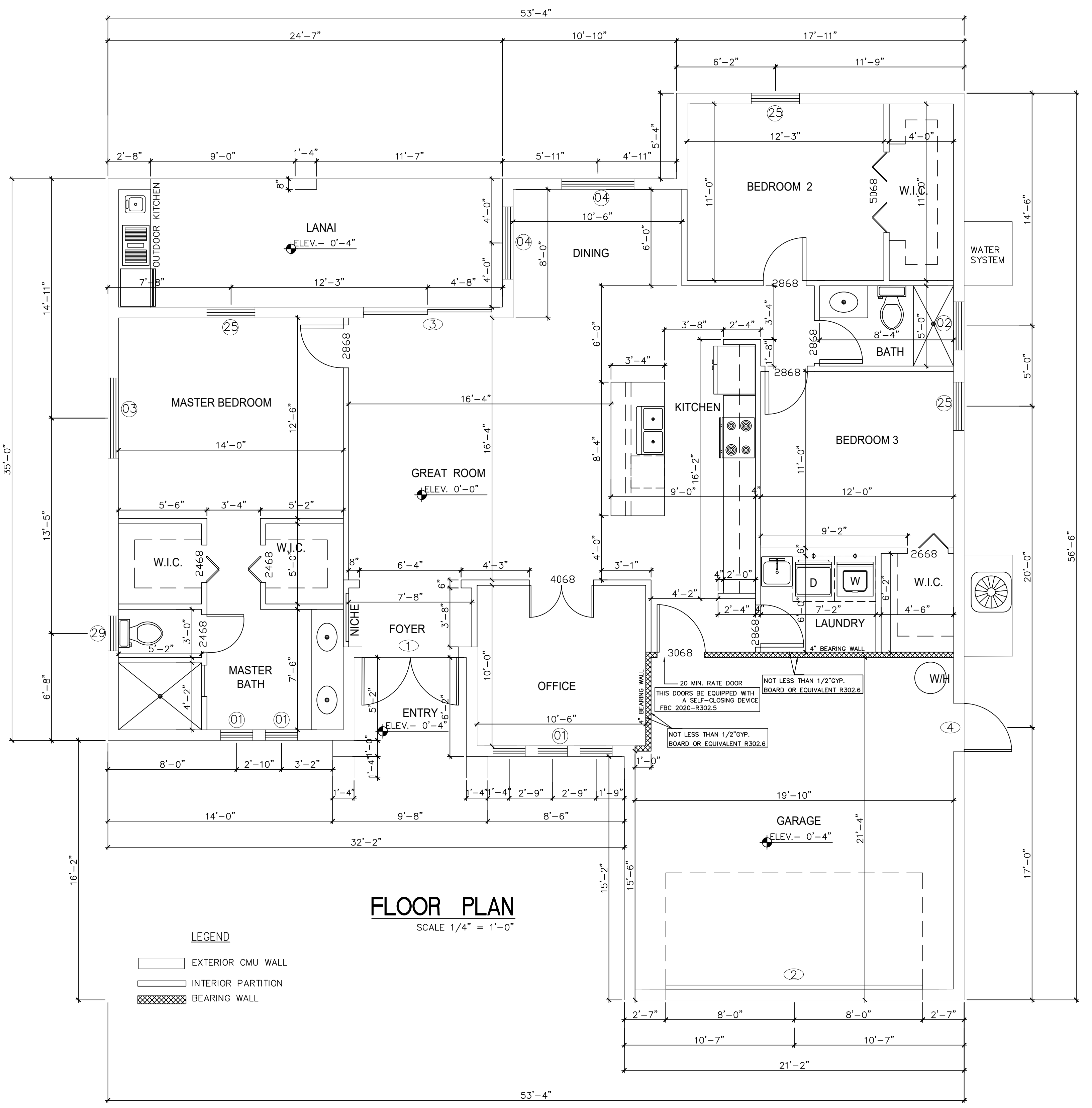
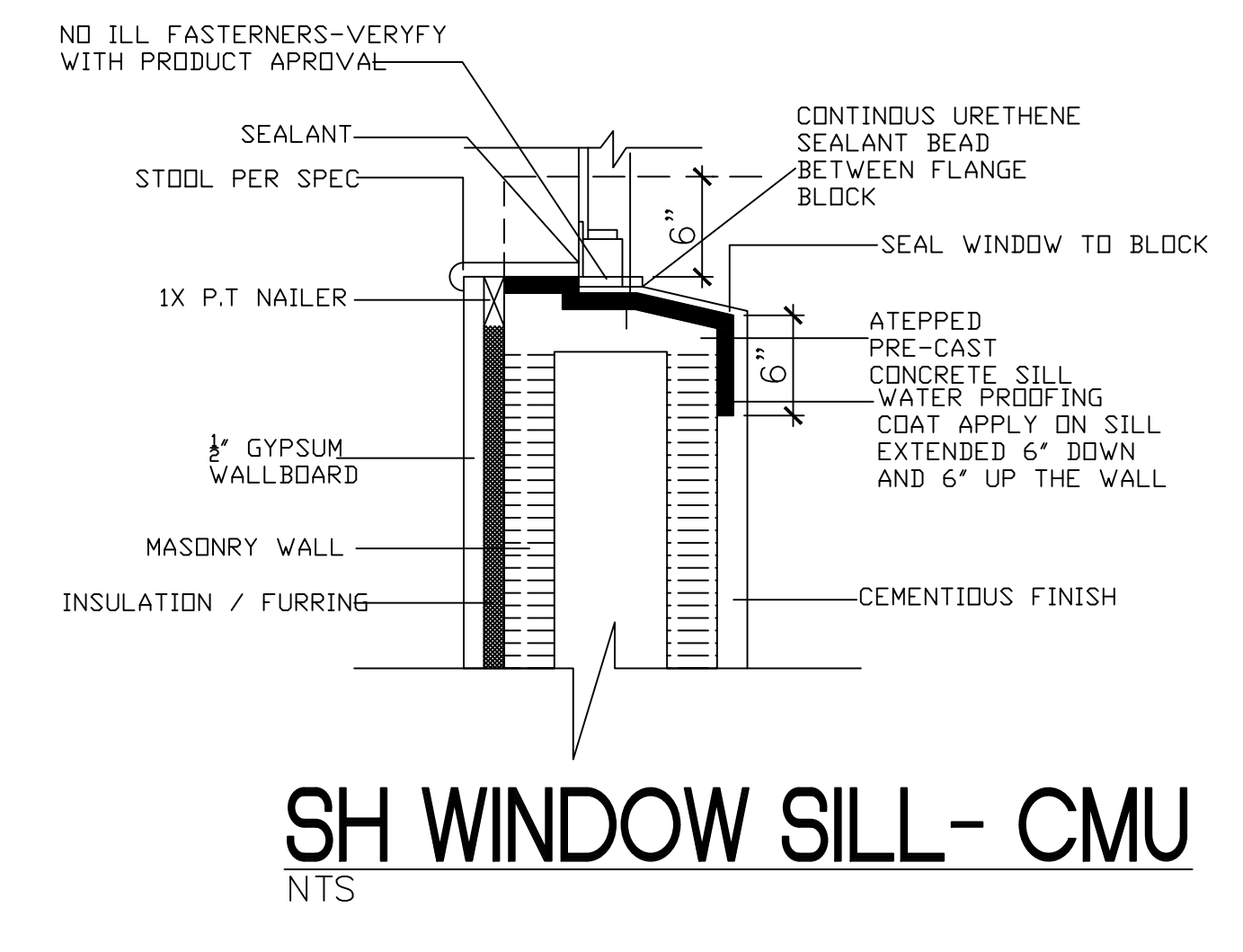
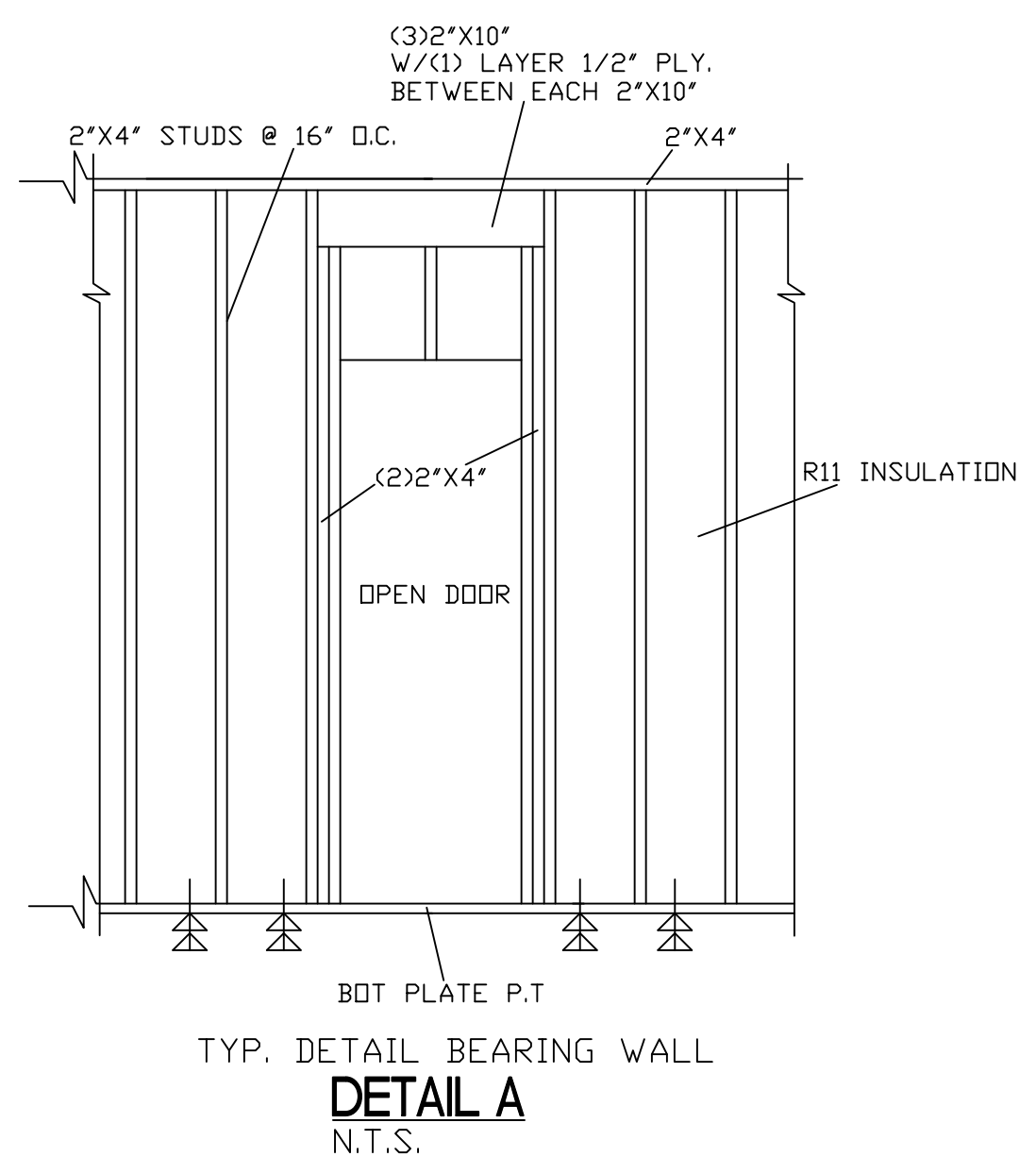
JOB DATA	
ULTIMATE DESIGN WIND SPEED :	170
NOMINAL DESIGN WIND SPEED :	132
RISK CATEGORY :	2
IMPORTANCE FACTOR :	1.0
BUILDING OCCUPANCY CLASSIFICATION :	RESIDENTIAL
BUILDING CONSTRUCTION TYPE :	5B
EXPOSURE CATEGORY :	C
OPENING PROTECTION :	
INTERNAL PRESSURE COEFFICIENTS :	+0.18, -0.18 (ENCLOSED)
FLOOR LIVE LOAD : 1/360 LIVE, 1/240 DEAD	
ROOF LIVE LOAD : 1/360 LIVE, 1/240 DEAD (SUPPORTING PLASTER CEILING)	
THE STRUCTURAL COMPONENTS OF THIS PLAN ARE IN COMPLIANCE WITH THE 7TH EDITION FLORIDA BUILDING CODE, WIND LOAD COMPLIANCE AND ITS RESISTANCE TO GRAVITY AND DESIGN PRESSURES GENERATED BY A WIND VELOCITY OF 170 MPH	

WIND VELOCITY (MPH)	170
IMPORTANCE FACTOR	1.00
EXPOSURE CATEGORY	C
INTERNAL PRESSURE COEFFICIENT	( +, -) 0.18
MEAN ROOF HEIGHT (FT)	10'-0"
BUILDING WIDTH (FT)	47'-4"
BUILDING LENGTH (FT)	59'-1"
ROOF SLOPE	6:12
ENCLOSED STRUCTURE	

DOOR SCHEDULE						
ZONE	SYMBOL	DOOR SIZE	TYPE	REMARK	MAXIMUM POSITIVE PRESSURE (PSF)	MAXIMUM NEGATIVE PRESSURE (PSF)
ZONE 4	①	6'-0" X 8'-0"	ENTRY	EXT.	38.12	-41.51
ZONE 5	②	16'-0" X 8'-0"	GARAGE	EXT.	37.47	-48.46
ZONE 4	③	8'-0" X 8'-0"	SLD	EXT.	38.12	-41.51
ZONE 4	④	3'-0" X 6'-8"	SDLID	EXT.	38.12	-41.51

WINDOW SCHEDULE						
ZONE	SYMBOL / CODE	WINDOW SIZE	TYPE	MAXIMUM POSITIVE PRESSURE (PSF)	MAXIMUM NEGATIVE PRESSURE (PSF)	REMARK
ZONE 4	①	20" X 50"	FIXED GLASS	40.05	-43.95	IMPACT
ZONE 4	②	36" X 20"	FIXED GLASS	40.05	-43.95	IMPACT
ZONE 4	③	60" X 24"	FIXED GLASS	40.05	-43.95	IMPACT
ZONE 4	④	54" X 60"	FIXED GLASS	40.05	-43.95	IMPACT
ZONE 4	⑤	37" X 63"	SINGLE HUNG	40.05	-43.95	IMPACT
ZONE 4	⑥	26" X 26"	SINGLE HUNG	40.05	-43.95	IMPACT

SOFFITS				
ZONE	EFFECTIVE WIND AREA	TYPE	MAXIMUM POSITIVE PRESSURE (PSF)	MAXIMUM NEGATIVE PRESSURE (PSF)
ZONE 5	10.00 SqFt	ALUM. SOFFITS	31.2	-41.8



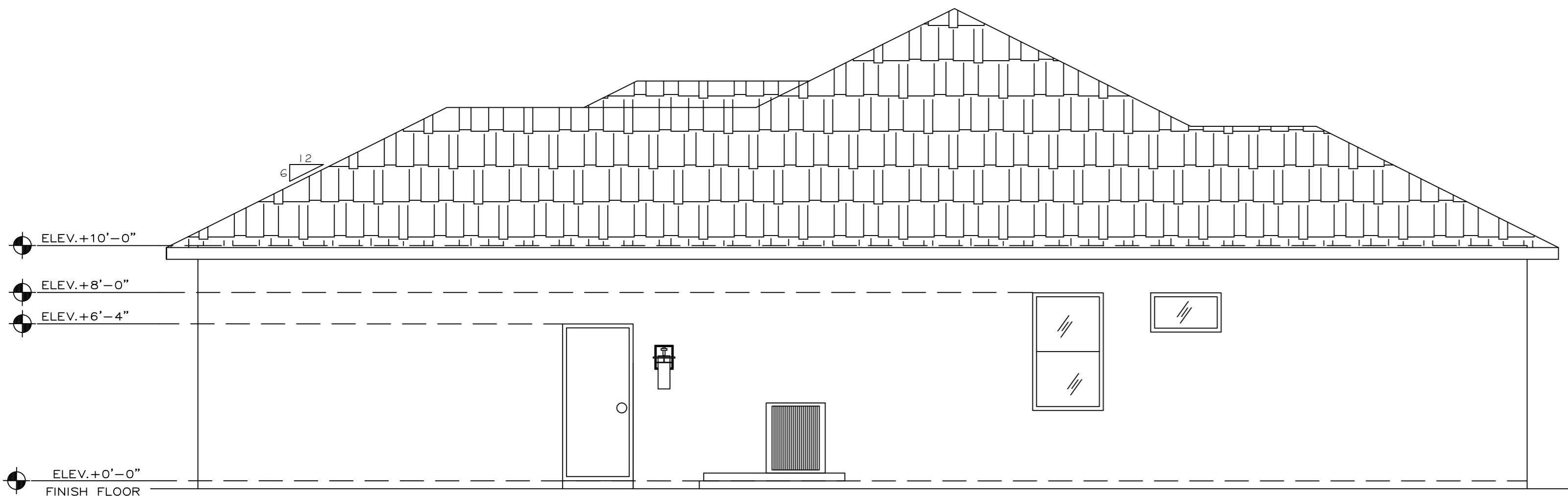
THIS DESIGN HAS BEEN PREPARED UNDER SUPERVISION, DIRECTION AND CONTROL BY:

RDA CONSULTING ENGINEERS, LLC.  
 CERTIFICATE AUTHORITY: 31149  
 RONNY DE AZA, PE  
 LIC NO. 78411

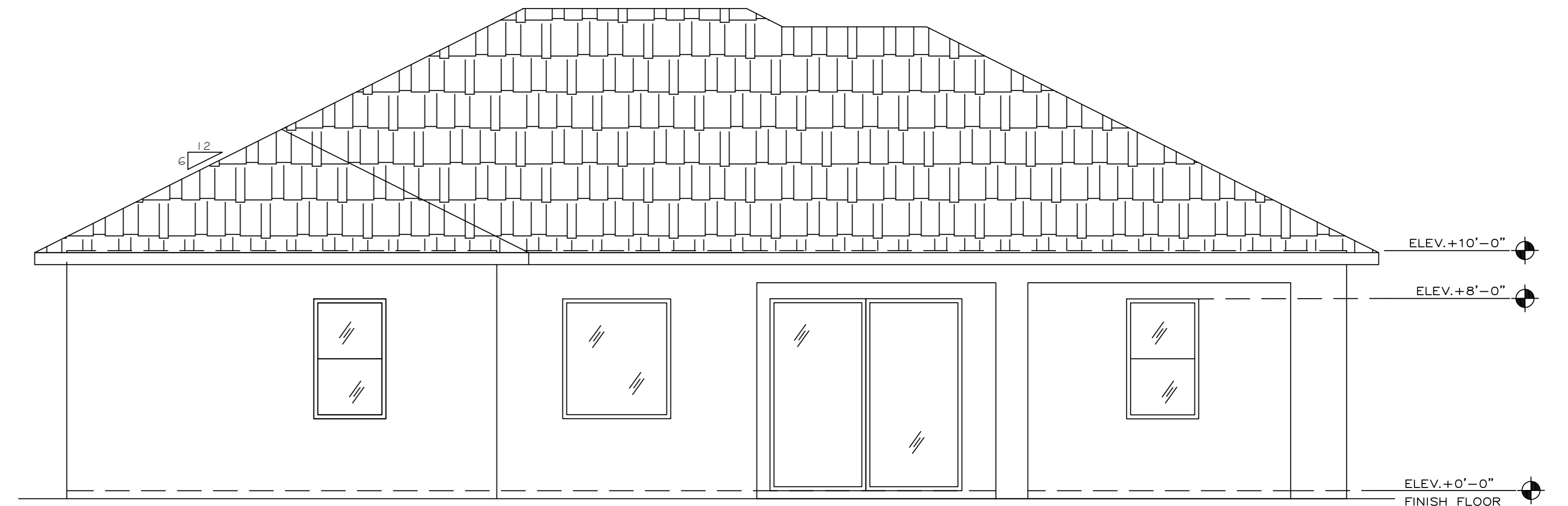
791 10TH STREET S. #302  
 NAPLES, FLORIDA 34102  
 P. 239-649-1551 F. 239-649-7112  
 ronnydeaza@rdafl.com



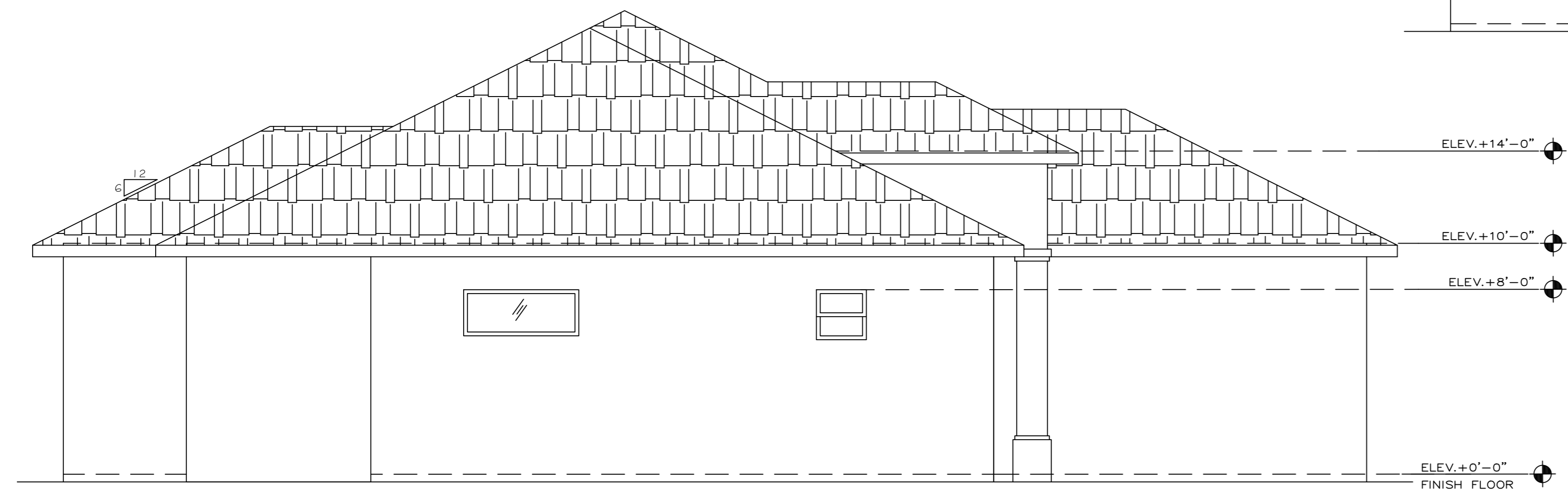
**FRONT ELEVATION**  
SCALE 1/4" = 1'-0"



**RIGHT ELEVATION**  
SCALE 1/4" = 1'-0"



**REAR ELEVATION**  
SCALE 1/4" = 1'-0"



**LEFT ELEVATION**  
SCALE 1/4" = 1'-0"

THIS DESIGN HAS BEEN PREPARED UNDER SUPERVISION,  
DIRECTION AND CONTROL BY:

RDA CONSULTING ENGINEERS, LLC.  
CERTIFICATE AUTHORITY: 31149  
RONNY DE AZA, PE  
LIC NO. 78411

791 10TH STREET S. #302  
NAPLES, FLORIDA 34102  
P. 239-649-1551 F. 239-649-7112  
ronnydeaza@rdafl.com