



Visit our Website



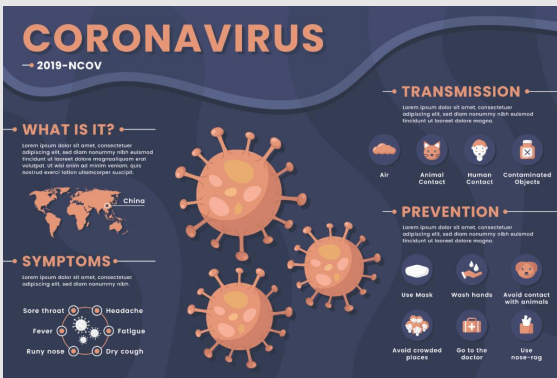
### Supervisory Training 2.0

We trying to gauge the interest in the new Supervisor Training 2.0. This class is the sequel to Supervisor Skills 1.0. Please respond yes, no, or would like more information. Thank you for sharing!

[Respond now!](#)

### Reaching the GLBMA

During these uncertain times, the GLBMA office will be operating from a secured work location. We are committed to bringing you updates as they unfold. We remind you that all events in March and April are currently being rescheduled. If you an update you would like share, please feel free to reach out. The best way to reach the office is calling 989-992-1163 or email: [tblehm@svsu.edu](mailto:tblehm@svsu.edu). Stay safe!



Infographic vector created by freepik - [www.freepik.com](http://www.freepik.com)

## GLBMA Feature

### 20 Cybersecurity Statistics Manufacturers Can't Ignore NIST Blog - By Jennifer Kurtz, February 27, 2020

Cybersecurity threats are a huge business risk for all companies. Small and medium-sized businesses (SMBs) — including manufacturers — are especially vulnerable to attacks. Small and medium-sized manufacturers (SMMs) are often seen as an easy entry point — a “soft” target — into larger businesses and government agencies. One of the first steps when prioritizing how to manage your business risk is to gather information about the threat environment. The 20 important (and shocking) cybersecurity statistics listed below focus on what manufacturers need to know about the “what” and “so what” of cybersecurity, so they can start planning their “now what” actions. [Click for the rest of the story!](#)



### GLBMA has a new location on campus

The GLBMA office is now located on the third floor of the Scott L. Carmona School of Business in the Business Excellence Centers. **We can be found in office CCB 313E**. Our phone and website have not changed.

# Women in MFG - Special Interest Group



The Women in MFG Special Interest Group is currently scheduling a bus tour to Detroit. It will include a tour of Pewabic Pottery, another possible (waiting on confirmation) plant tour, lunch and a casino stop. This trip is slated for May 15, 2020 from 7:00 am until 6:00 pm.

The estimated cost is \$75 per person. If you are interested in attending please register below. We need about 40 people to commit for the motor coach bus. [Yes, I am Interested!](#)

## Member News

### Glastender's President Todd Michael Hall preforms on The Voice!

SAGINAW, Mich. – Saginaw's Todd Michael Hall, performed during the blind auditions on the season premiere of NBC's "The Voice" on Monday, February 24, 2020 and advanced to the Battle Rounds.

Hall is a musician best known as the lead singer for New York-based band Riot V. He has been in the band since 2013 and has also sung in many other metal bands including Reverence, Entice and Harlet.

Hall is the President of Glastender, Inc., which is located in Kochville Township. Glastender is a family-owned company manufacturing foodservice equipment since 1969. He also owns a climbing gym.

Congratulations to Todd and good luck moving forward. #teamlake

## Oh deer!

Oh deer! They had a surprise this week at Amigo Mobility... a deer was here to greet them! The deer crashed through a window and was browsing the selection of Amigo carts while keeping a doe profile. [Watch the tail unfold!](#)

Thank you to Jerry and the Bridgeport Charter Township Police Department for bucking up to the challenge of corralling the deer out the back door. As luck may hoove it, the deer left unharmed and lived to tell the tail.

## Capitol News

### Legislature Passes Supplemental — \$15 Million Allocated for Going PRO Talent Fund

The Legislature today, 3/12/20, passed a supplemental funding bill that includes \$15 million in Fiscal Year 2020 funding for the Going PRO Talent Fund. Senate Bill 151 now moves to Governor Gretchen Whitmer for her signature.

#### Background

A truly collaborative and demand-driven program responsible for more than \$100 million in direct funding since 2014, the Going PRO Talent Fund is a nationally coveted program that addresses Michigan's skills gap by creating public-private partnerships between employers and Michigan's workforce development system to design training models that adapt in real time with changing employer demand.

Following a veto from Governor Whitmer late last year, Going PRO funding for FY20 faced uncertainty but, thanks to MMA-led support and the testimony, written letters and phone calls by countless manufacturers and pro-industry supporters from across the state, this much-needed talent funding can move forward and drive the ongoing growth and development of the manufacturing industry and its workers.

#### What Going PRO Talent Fund Applicants Can Expect

More than 1,200 employers submitted applications last fall for the FY20 Going PRO Talent Fund award cycle. As soon as Governor Whitmer signs the supplemental appropriations bill, the state will be informing each Michigan Works! Agency of their approved grants. The agencies will then be reaching out to employers to ensure that the training is still viable and if any updates are needed to the training plan and

award.

### The Future of Going PRO Talent Fund

MMA is continuing to work with the Whitmer Administration and legislative leaders to secure increased funding for the Going PRO Talent Fund in FY21 and beyond, as well as other key initiatives highlighting Michigan's effort to reduce its existing shortage of skilled trades talent.

Members can contact MMA's Delaney McKinley, at 517-487-8530 or [mckinley@mimfg.org](mailto:mckinley@mimfg.org), to participate in the MMA Employment and Workforce Policy Committee and to remain informed on Going PRO and other talent-related issues.

### ERRC Votes to Advance Proposed Drinking Water Rules Over Manufacturing Objection

MMA provided public comment during the Environmental Rules Review Committee's meeting on Thursday, 2/27/20, regarding the proposed rule set relating to per- and polyfluoroalkyl substances (PFAS) in drinking water. The Association testified that the ERCC should use more of its allotted time to further review the rules and ensure a complete assessment and informed vote.

Instead, no modifications were made and the ERRC moved to advance the rule set to the Joint Committee on Administrative Rules (JCAR). By statute, JCAR will have 15 session days to review the rule set before presenting it to the Secretary of State for promulgation. Contact MMA's Dave Greco, at 517-487-8543 or [greco@mimfg.org](mailto:greco@mimfg.org), to join the MMA PFAS Work Group and go online to learn more about Michigan's administrative rules process.

### Senate Passes Changes to Health Care Cost Containment Regulations

Michigan's strong Certificate of Need (CON) process continues to positively impact health care costs and utilization while ensuring reasonable access and quality to businesses and consumers alike. Despite this, the Senate recently passed several MMA-opposed bills, including SB 669, SB 672 and SB 673, which could increase health care costs by relaxing CON regulations. The Senate also unanimously passed MMA-supported SB 671, which would add two members representing the general public to the CON commission.

The bill package now moves to the House Health Policy Committee. Contact MMA's Delaney McKinley, at 517-487-8530 or [mckinley@mimfg.org](mailto:mckinley@mimfg.org), for more information on how MMA is continuing to fight against the elimination of the CON process and the proliferation of medical services and facilities.

### Manufacturers Push Back on Incentive Transparency Legislation

Economic incentives like the Michigan Economic Growth Authority (MEGA) and Good Jobs for Michigan have played a significant role in attracting new business to Michigan, sparking a decade-long span of nation-leading investment and job creation. Notwithstanding the clear positives, a package of politically motivated bills moves forward, masked as being pro-transparency, yet designed to attack and publicly shame proactive entrepreneurs and job creators.

MMA is working with the Legislature to push back and protect the privacy and integrity of companies large and small whose state partnerships continue to drive Michigan's economy. Contact MMA's Mike Johnston, at 517-487-8554 or [johnston@mimfg.org](mailto:johnston@mimfg.org), to stay in the loop on this fight.

## Opportunities Aboard



### TAAF funding available for Manufacturers

GLTAAC is a non-profit organization providing matching funds to import-impacted manufacturers in Indiana, Michigan and Ohio. We do this through the federal **Trade Adjustment Assistance for Firms program (TAAF)**.

GLTAAC clients use TAAF co-funding of up to \$75,000 to hire outside expertise for critical business improvement projects. Matching funds can be applied toward the cost of consultants, engineers, designers or other technical assistance providers.

Check out GLTAAC's [Client Success Stories](#) to see how TAAF funding helps import-injured manufacturers regain their competitive edge.

Do you know a manufacturer who could use this kind of assistance? Contact GLTAAC Project Manager, Scott Phillips. He'll answer your questions about the TAAF program and how your manufacturers can qualify. Give him a call at 734.787.7509.

Check the [website](#) for current events



### MFG Champions

Learn how to become a MFG Champion!

Support the GLBMA and get year round exposure.

Call Tanya at 989-964-2881 or email  
tblehm@svsu.edu



Great Lakes Bay Manufacturers Association | CCB313E Curtiss Hall | 989-964-2881 | [www.glbma.org](http://www.glbma.org)

STAY CONNECTED



**Proud to Manufacture**