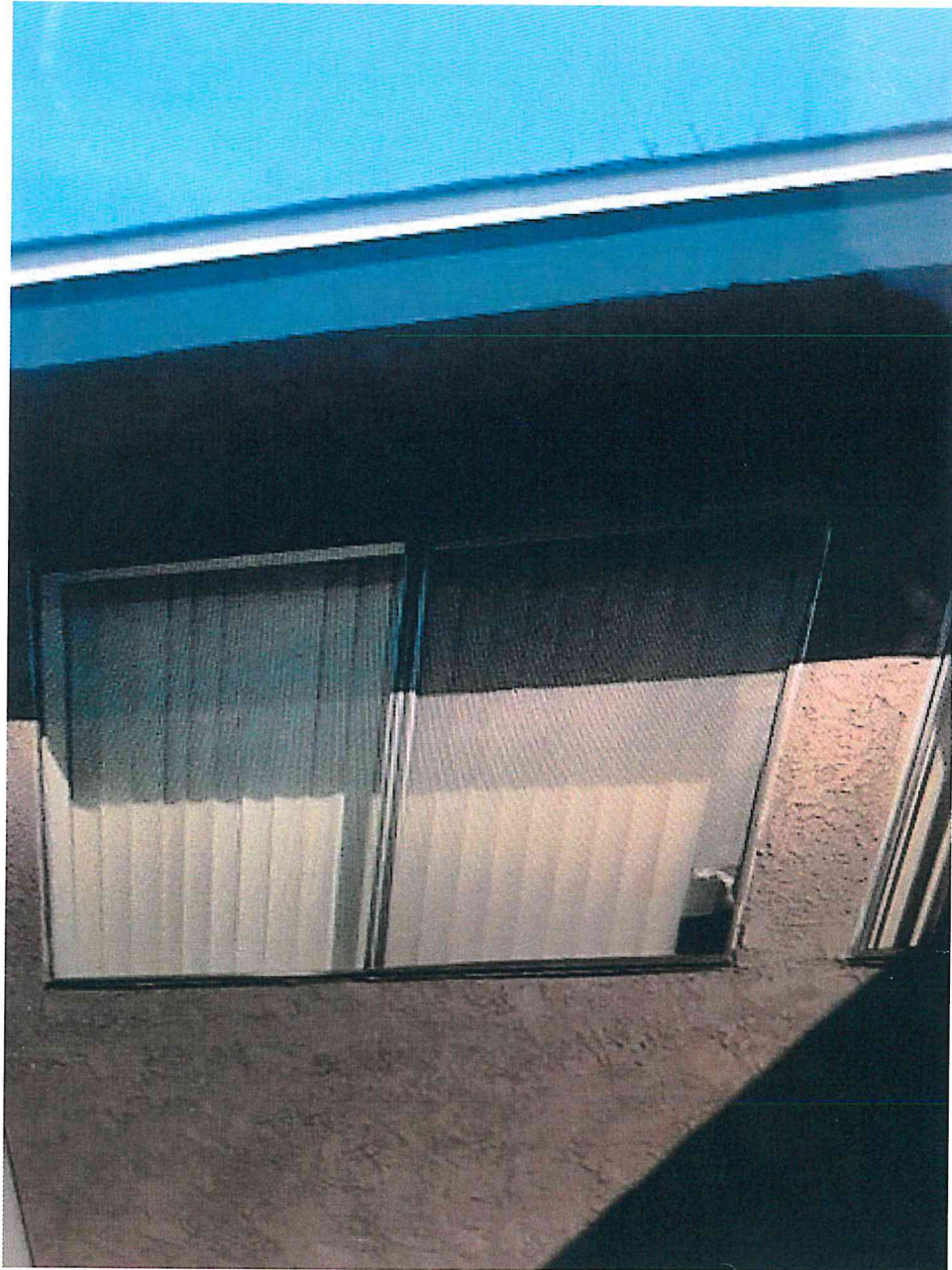


WINDOW REPLACEMENT GUIDELINES

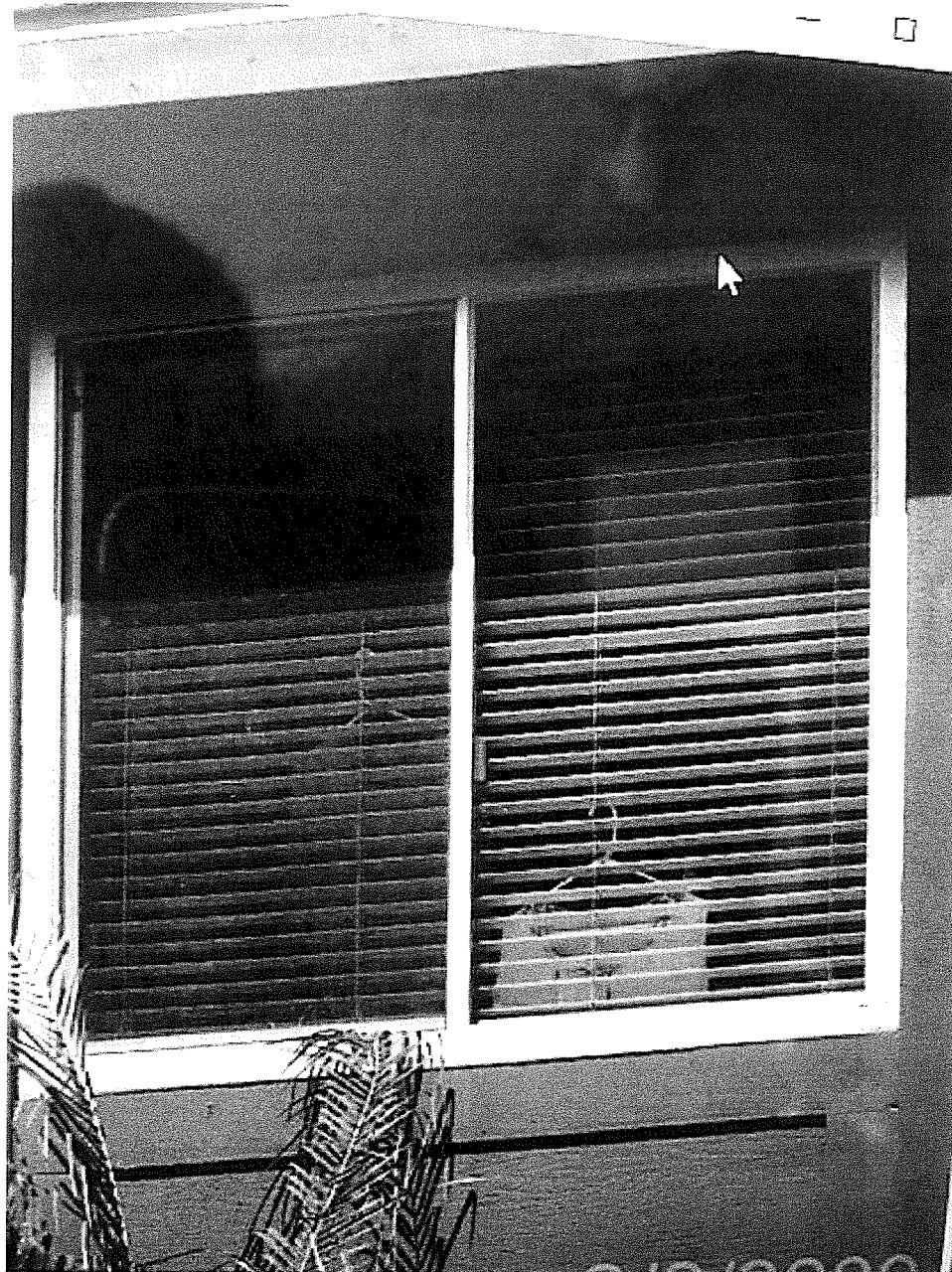
Currently there are two types of windows approved for installation at Windwood Township.

1. You may install aluminum (mill) framed windows with a with this finish. If you choose Aluminum frames, they are available from Milgard, although you are not required to use them only. Block frame on new construction frame for wood exterior surrounding trim. Retro fit frames shall be used on stucco surrounding locations.
2. You may also use a vinyl frame window if all exterior visible vinyl is SILVER- NOT WHITE. This is available from Milgard in their “high line series” as well as competing prices. It may also be available from other manufacturers.
3. Vinyl windows shall be of a retro fit design for locations with stucco wall surroundings.
All vinyl windows with wood trim surroundings must be a block frame set into a trim opening or a new construction style with nail flanges under the surrounding frame. Retro fit frames with flanges on the face of the wood trim is NOT ALLOWED.

THIS IS STUCCO WALL
INSTALLATION - RETRO FIT FRAME
IS PROPER. (HAS BEEN ALLOWED)

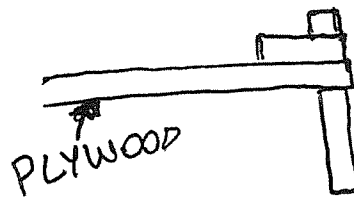
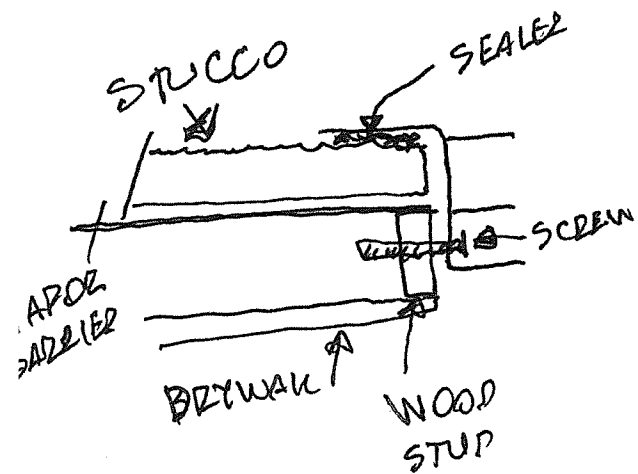


THIS IS RETRO FIT FRAME
INSTALLED ON WOOD WALL - NOT
ALLOWED WITH VINYL FRAME WINDOWS!

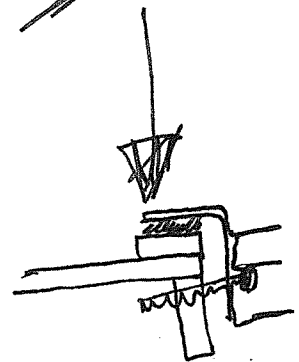




RETRO FIT ON
↓
STUCCO



RETRO-FIT
ON WOOD
NOT ALLOWED!



MILGARD

Make a Statement with Color

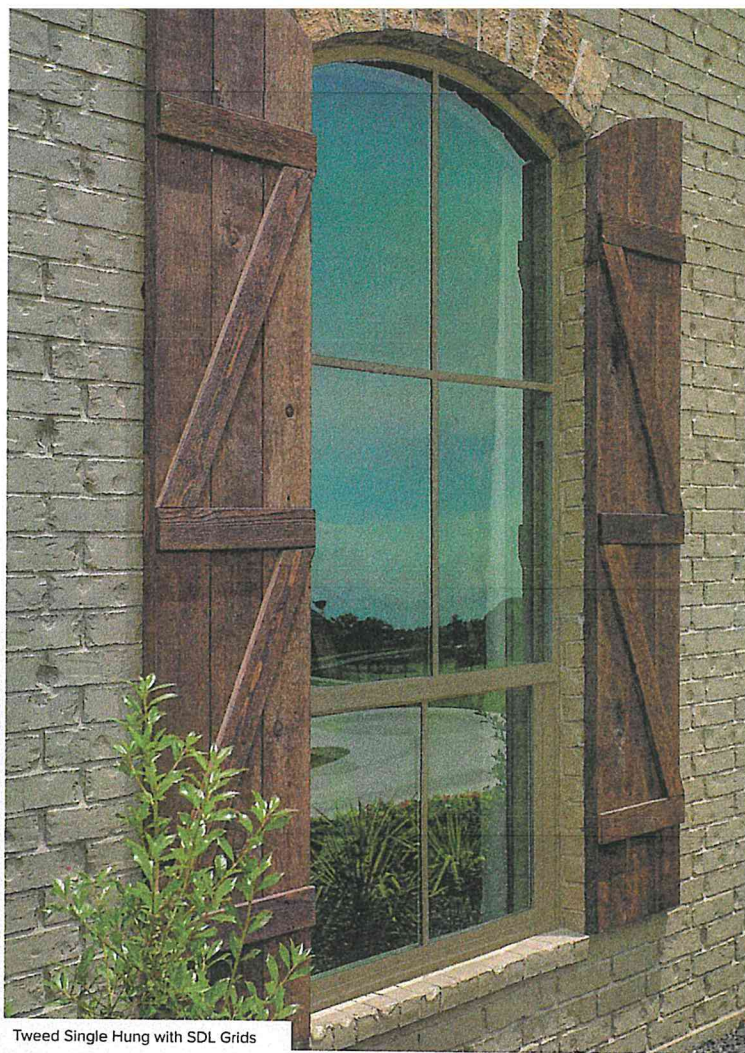
Premium
Exterior
Vinyl

Finishes

White interior only

Standard
Finishes

Matching interior
and exterior



Tweed Single Hung with SDL Grids



Tan Horizontal Slider

Colors shown are approximate. Visit your local Milgard Certified Dealer to see accurate paint samples.

*Clay is not available in all locations.