


☐

I'm not robot

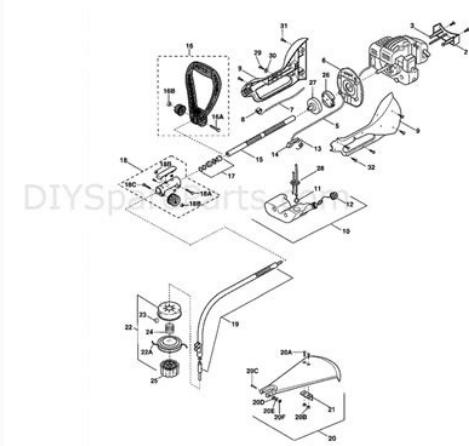
  
reCAPTCHA

I'm not robot!

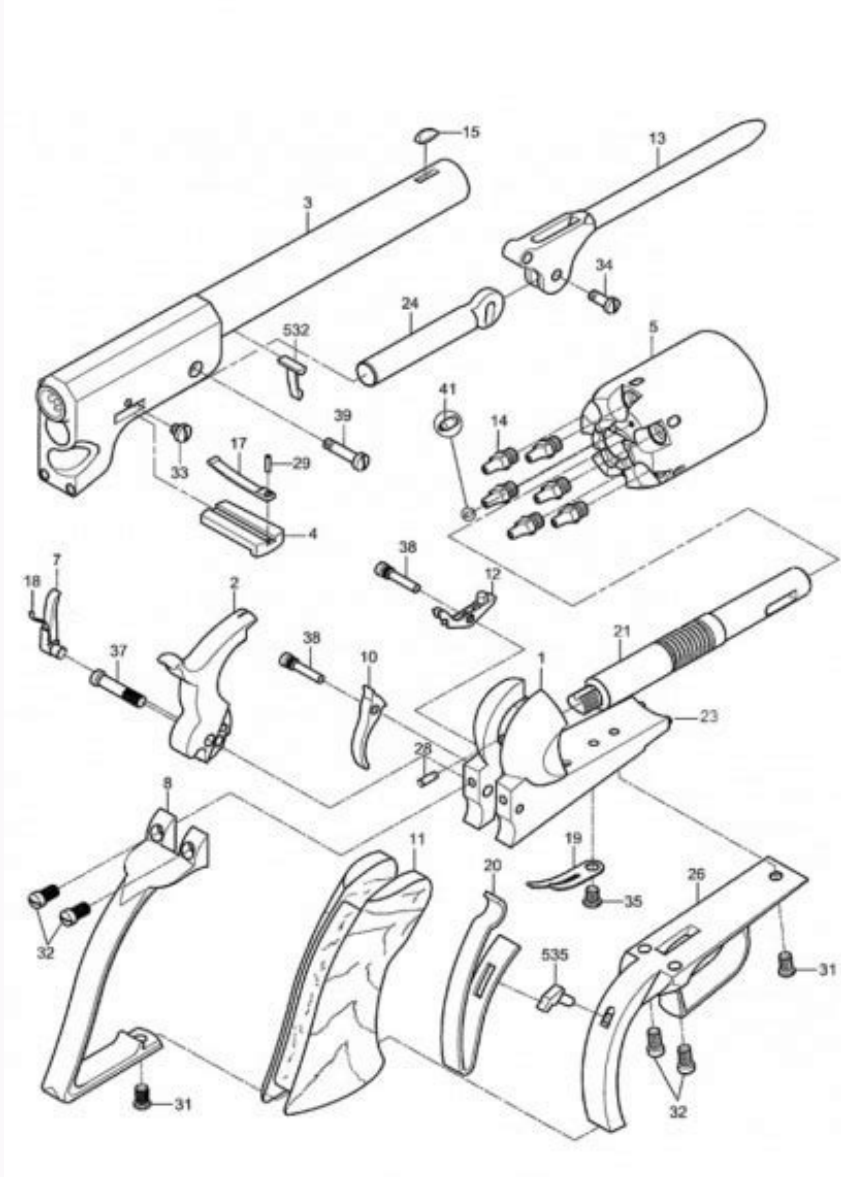
Cva muzzleloader parts diagram

Cva muzzleloader lineup. Cva optima muzzleloader parts diagram.

Need Expert Advice? Give us a Call: (855) 236-5000 Best Prices, Fast Shipping & Expert Advice! Home Muzzleloader Rifle Manuals FIRING PIN KIT FIRE.KIT \* Firing pin kit for CVA Break action muzzleloaders made in 2010 or later. Will not work in the Apex. 209 CONVERSION KIT AC1696 \* Kit to convert CVA muzzleloaders with quick removeable Northwest (musket cap) breechplugs to be able to use 209 primers.only compatible with models made 2010 and newer\* BREECHPLUG FOR OPTIMA 29839 For 2009 and older Optima's and Kodiaks PARAMOUNT BP - VARIFLAME AC1719 \* PARAMOUNT BP - VARIFLAME AC1719 paramount breech plug variflame ignition 45/50 cal cva 1718 \* PARAMOUNT VF QRBP .40 CAL ONLY AC1738 / 33222 \* PARAMOUNT VF QRBP .40 CAL ONLY Notched Firing Pin 29961/31916 \* Notched Firing Pin 29961 for older guns Williams Rear Sight 71113 \* NW Conversion Kit AC1697 \* Kit to convert CVA muzzleloaders with quick removeable 209 breechplugs to be able to use Musket Caps.\*Only compatible with models made 2010 and newer\* Electra breech plugs 30115 \* Electra breech plugs 30115 INLINE BREECH PLUG (209) AC1678 \* 209 Breechplug for Inline and Bolt Action CVA muzzleloaders (not break action). OPTIMA/KODIAK 209 BREECHPLUG ac1678a \* Breech Plug for Optima and Kodiak REPLACEMENT BREECH PLUG (STD) AC1679 \* REPLACEMENT BREECH PLUG (STD) BLACK BLACKHORN QRBP FOR ACCUR AC1651BH \* BLACK BLACKHORN QRBP FOR ACCUR BLACK QRBP FOR ACCURA V2, OPTI AC1651 \* BLACK QRBP Breechplug for Accura V2, Optima V2, or Wolf FIRING PIN O-RING 29262 Fits 2010 and newer Wolf, Optima V2, Accura V2. CVA o rings 2926 50pc These are the same o rings used on the CVA fire kits and NW fire kits. FIRING PIN 29880 \* Firing Pin for CVA Wolf, Optima, and Accura. Only compatible with 209 ignition. FIRING PIN RETAINER 29881 \* Firing Pin Retainer for 209 ignition. Firing pin spring 29882 \* Firing Pin Spring for 209 Ignition NW FIRING PIN 32171 Fits 2010 and newer Wolf, Optima V2, Accura V2. NW BREECHPLUG FIRING PIN RETAINER 32170 NW BREECHPLUG FIRING PIN RETAINER O ring sold seperate NW BREECHPLUG SPRING 32172 Fits 2010 and newer Wolf, Optima V2, Accura V2.



APEX FOREEND ATTACHING SCREW 31910 \* Screw to attach the forestock to the barrel on an Apex muzzleloader. BUTTSTOCK BOLT 31908 \* CRUSHZONE RECOIL PAD 30882 \* Crushzone Recoil Pad\*Compatible with 2010 and newer Wolf, Optima, Accura, Scout, and Hunter\* Front Sight Optima Pistol 30700 \* For use on Optima pistol, and standard rifle when you can't adjust your groups low enough.



no screw included with this Spring 29824 \* Tension spring Elkhorn Pro Breech Plug for 209 primers 29016 \* Elkhorn Pro Breech Plug for 209 primers SCREW M6X16 DIN 985 29825 Longer screw \* 2010 and Newer Wolf, Optima and Accura Forend Screw apex ml forend screw 31172N Shorter one \* MUSKET NIPPLE FOR CVA (DIKAR) 10405 \* MUSKET NIPPLE FOR CVA (DIKAR) 3 CRBN STEEL NPPLS - 6 X 1MM AC1481 \* M6 x 1 Carbon Steel Nipples for CVA breech plugs SIGHT HOLE PLUG SCREW 29256 \* Open Sight Hole Plug Screw QTY - 1 Works on all CVA Rifles & Muzzleloaders DS400 SeriesQR Saaembly Pak. Assembly pack for the Durasight DS400 Quick release rings. QRBP FOR ACCURA,OPTIMA,WOLF, TC AC1611 \* Silver Pellet Breech plug for Accura, Wolf and Optima\*Only Compatible with models made 2010 and Newer\* QRBP FOR ACCURA,OPTIMA,WOLF,TC AC1611 (used) \* Silver Pellet Breech plug for Accura, Wolf and Optima\*Only Compatible with models made 2010 and Newer\*This is used and has minor scratches and will not affect use SCOPE PLUG SCREW (METAL) 28254 \* Blued metal plug screw for scope holes in CVA rifles and muzzleloaders.



Threaded 8-40. BOLT SPRING 28274 \* Bolt spring for older CVA bolt action muzzleloaders. BLACKHORN QRBP FOR ACC,OPT,WLF AC1611BH \* Fits 2010 and newer Wolf, Optima V2, Accura V2. For use exclusively with the Blackhorn powder BLACKHORN QRBP FOR ACC,OPT,WLF AC1611BH used Fits 2010 and newer Wolf, Optima V2, Accura V2. For use exclusively with the Blackhorn powder THIS IS A USED BREECHPLUG Firing pin housing for Kodiak rifle 29241 \* Firing pin housing for a Kodiak rifle and others Firing Pin for Kodiak rifle 29227 \* firing pin for a firing pin set for a Kodiak rifle and others NW BREECHPLUG (NEW) 32366 \* CVA Northwest QRBP for Wolf, Optima, and Accura\*Only compatible with models made 2010 and newer\* FIRING PIN KIT FOR NW GUNS nwfire.kit NW FIRE.KIT comes with o ring, retainer, firing pin, and spring SIGHT HOLE PLUG SCREW (SS) 31246 \* Stainless Steel Sight Hole Plug Screw QTY - 1 Works on all CVA Rifles & Muzzleloaders Rear sight for Fire Bolt 20638 \* Rear sight for Fire Bolt BLACKHORN BREECH PLUG FOR TC 31655B \* Blackhorn breechplug for Bergara Thompson Center Barrels QRBP FOR APEX RIFLES 31270 \* Qrbp for apex rifles 31270 FOS SET FOR OPTIMA MZ PISTOL AC1628 \* FOS SET FOR OPTIMA MZ PISTOL DURABRIGHT SIGHT FOR OPTIMA ac1622 Fiber Optic sights for CVA Optima, Wolf, Accura made 2010 and newer. Barrel Lug to Attach Forearm 30072M \* Barrel lug to attach forearm on pre-2010 rifles. SCREW M4x35 DIN 966- use 32258 \* SCREW M4x35 DIN 966- use 32258 screw m4x40 din 966 31118 \* ILLUMINATOR FRONT SIGHT- DIKAR 30370 \* Front fiber optic open sight from Durasight Durabright package for CVA muzzleloaders. Screw not included DURABRIGHT F.O SIGHTS-CVA/TRAD DS001 \* The ultimate in visibility and durability- these fiber optic open sights will work on all In-line CVA and Traditions Muzzleloaders and break actions muzzleloader. Hammer Spur for newer rifles 31720 right hand thread \* For models 2016 and newer.. Spur Left Hand 31914 different style see picture \* Spur Left Hand. for older guns. RAMROD KEEPER METAL 30374 \* RAMROD KEEPER PLASTIC REINFORC 30906 \* Plastic Ramrod Keeper Insert SCREW - RECOIL PAD 10448 \* Recoil Pad screw for CVA crush zone recoil pads\*Compatible with 2010 and newer Wolf, Optima, Accura, Scout, and Hunter\* SCREW FOR SOLAR SIGHT (6-48) 20549A \* Screws for Durasight Fiber Optic Sights. 1 screw per each. SCREW PK FOR DS100/103 Screw pack for weaver style rail that fits CVA Rifles SCREW PK FOR SP411 Screw pack for Durasight SP411 SCREW PACK SCREW PK FOR 102/100 Screw pack for DeadOn Scope Mount STOCK BOLT WASHER W503241 \* Washer for bolt that attaches the buttstock to the receiver. THUMBHOLE STOCK ADAPTER 30043 (being discontinued) \* Adapter to put a thumbhole stock on your pre-2010 Optima, Optima Pro, Optima Elite, or Elite Stalker. comes with screws and washers, TOP CAP FOR DS411/410/409BX DS411BXCAP Top cap Durasight Dead on mount. (black) screws not included, TUBE HOLDER 30410 \* Clips on to barrel to hold forestock on. Super strong spring loaded to securely hold forestock in place. WRENCH FOR 30360/30370 SIGHTS 32042 Wrench to adjust Durasight Fiber Optic Sights Need Expert Advice? Give us a Call: (855) 236-5000 Best Prices, Fast Shipping & Expert Advice!