



Motor Vehicle Use Map Dixie National Forest Cedar City Ranger District



INFORMATION SOURCES

Please contact the Supervisor's Office at 1789 North Wedgewood Lane, Cedar City, Utah 84721. The telephone number is (435) 865-3700. Information is also available at the five District Ranger Headquarters.

Pine Valley Ranger District
196 East Tabernacle RM 38
St. George, Utah 84770
(435) 652-3100

St. George Interagency Recreation Information
345 East Riverside
St. George, Utah 84790
(435) 868-3246

Cedar City Ranger District
1789 North Wedgewood Lane
Cedar City, Utah 84721
(435) 865-3200

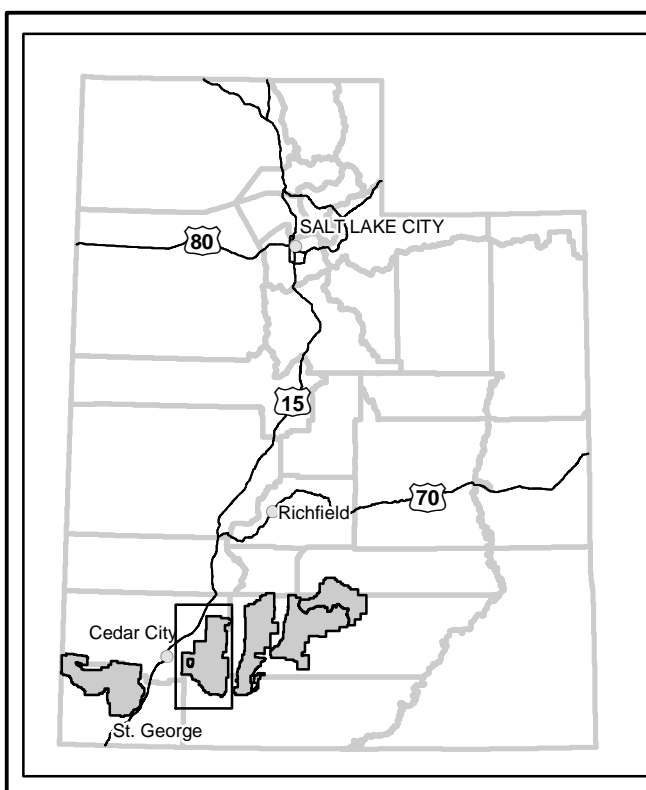
Powell Ranger District
225 East Center Street
P.O. Box 80
Panguitch, Utah 84759
(435) 876-3300

Escalante Interagency Federal Building
755 West Main Street
Escalante, Utah 84726
(435) 826-5400
Visitor Center (435) 826-5499

Fremont River Ranger District
136 South Main
P.O. Box 129
Loa, Utah 84747
(435) 836-2800

www.fs.usda.gov/dixie

VICINITY MAP



The U.S. Department of Agriculture (USDA) prohibits discrimination in all its programs and activities on the basis of race, color, national origin, age, disability, and where applicable, sex, marital status, familial status, parental status, religion, sexual orientation, genetic information, political beliefs, reprisal, or because all or part of an individual's income is derived from any public assistance program. (Not all prohibited bases apply to all programs.) Persons with disabilities who require alternative means for communication of program information (Braille, large print, audiotape, etc.) should contact USDA's TARGET Center at (202) 720-2600 (voice and TDD). To file a complaint of discrimination, write to USDA, Director, Office of Civil Rights, 1400 Independence Avenue, S.W., Washington, D.C. 20250-9410, or call (800) 795-3272 (voice) or (202) 720-6382 (TDD). USDA is an equal opportunity provider and employer.

PURPOSE AND CONTENTS OF THIS MAP

The designations shown on this motor vehicle use map (MVUM) were made by the responsible official pursuant to 36 CFR 212.51; are effective as of the date on the front cover of this MVUM, and will remain in effect until superseded by next year's MVUM.

It is the responsibility of the user to acquire the current MVUM. This MVUM shows the National Forest System roads, National Forest System trails, and the areas on National Forest System lands in the Cedar City Ranger District that are designated for motor vehicle use pursuant to 36 CFR 212.51. This MVUM also identifies the vehicle classes allowed on each route and in each area; and any seasonal restrictions that apply on those routes and in those areas.

Designation of a road, trail, or area for motor vehicle use by a particular class of vehicle under 36 CFR 212.51 should not be interpreted as encouraging or inviting use or implying that the road, trail, or area is passable, actively maintained, or safe for travel. Motor vehicle designations include parking along designated routes and facilities associated with designated routes when it is safe to do so and when not causing damage to National Forest System resources. Seasonal weather conditions and natural events may render designated roads and trails impassable for extended periods. Designated areas may contain dangerous or impassable terrain. Many designated roads and trails may be passable only by high-clearance vehicles or four-wheel-drive vehicles. Maintenance of designated roads and trails will depend on available resources, and many may receive little maintenance.

This motor vehicle use map identifies those roads, trails, and areas designated for the motor vehicle use under 36 CFR 212.51 for the purpose of enforcing the prohibition at 36 CFR 261.13. This is a limited purpose. The other public roads are shown for information and navigation purposes only and are not subject to designation under the Forest Service travel management regulation.

These designations apply only to National Forest System roads, National Forest System trails, and areas on National Forest System lands.

PROHIBITIONS

It is prohibited to possess or operate a motor vehicle on National Forest System lands on the Dixie National Forest other than in accordance with these designations (CFR 261.13).

Violators of 36 CFR 261.13 are subject to a fine of up to \$5,000, imprisonment for up to 6 months, or both (18 U.S.C. 3571(a)). This prohibition applies regardless of the presence or absence of signs.

This map does not display nonmotorized uses, over-snow uses, or other facilities and attractions on the Dixie National Forest. Obtain forest visitor information from the local national forest office.

Designated roads, trails and areas may also be subject to temporary emergency closures. As a visitor, you must comply with signs notifying you of such restrictions. A national forest may issue an order to close a road, trail or area on a temporary basis to protect the life, health, or safety of forest visitors or the natural or cultural resources in these areas. Such a temporary and/or emergency closures are consistent with the Travel Management Rule (36 CFR 212.52 (b), 36 CFR 261 subpart B).

The designation "road or trail open to all motor vehicles" does not supersede State traffic law.

Legend

- Roads Open to Highway Legal Vehicles
- Roads Open to All Vehicles
- Trails Open to Vehicles 50" or Less in Width
- Special Vehicle Designation (See Blanket Statement)
- Seasonal Designation
- Highways, U.S. State
- Other Public Roads
- Other Public Roads
- Short Route Identifier
- FS Campground
- Picnic Area
- Information Site
- Peaks
- Forest or Unit Boundary
- National Forest System Lands
- Non-National Forest System Lands within the National Forest
- Political Boundary
- Lakes and Rivers

0 0.5 1 2 Miles

EXPLANATION OF LEGEND ITEMS

Roads Open to Highway Legal Vehicles Only:

These roads are open only to motor vehicles licensed under State law for general operation on all public roads within the state.

Roads Open to All Vehicles:

These roads are open to all motor vehicles, including smaller off-highway vehicles that may not be licensed for highway use (but not to oversize or overweight vehicles under State traffic law).

Trails Open to Vehicles 50 inches or Less in Width:

Trails open only to motor vehicles less than 50 inches in width at the widest point on the vehicle.

Special Vehicle Designation:

This symbol indicates that the road or trail is open to classes of vehicles other than those listed above. Refer to the Seasonal and Special Designation blanket statement below.

Other Public Roads and Trails:

Interstate
Highways, U.S. State
Other Public Roads

These symbols are used to show routes the Forest Service does not have jurisdiction over and has not designated for motorized use. These symbols are part of the reference layers showing connections to towns and cities outside the forest boundary.

Short Route Identifier:

This symbol is used for roads that are too short to show a symbol type on the map. The symbol contains the number of the road or trail. Users should refer to the corresponding number in the Short Route Table for designation information.

Seasonal Designation:

This symbol, used in conjunction with one of the other road or trail symbols, indicates that the road or trail is open only during certain portions of the year. Refer to Seasonal and Special Designation blanket statement below.

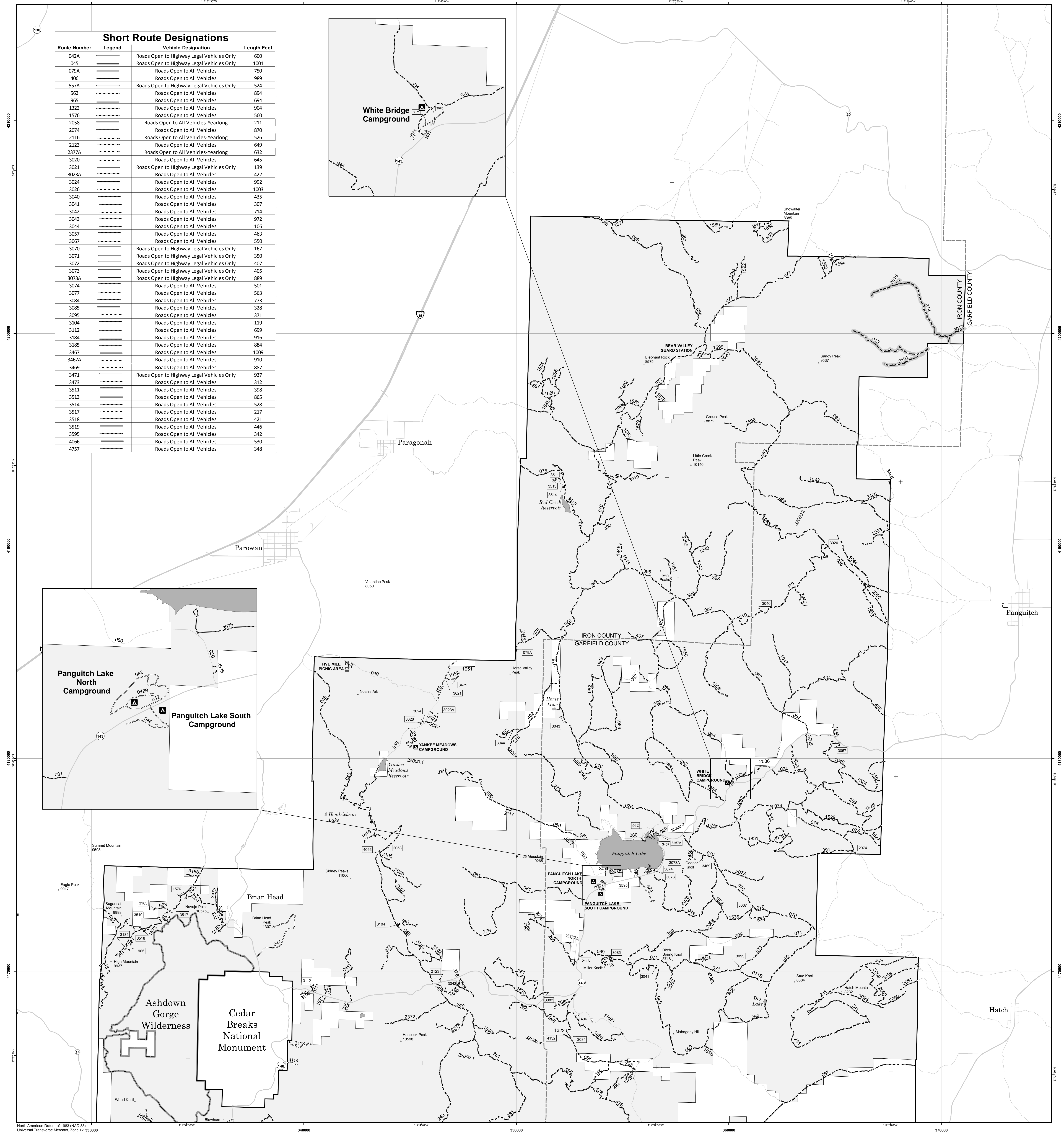
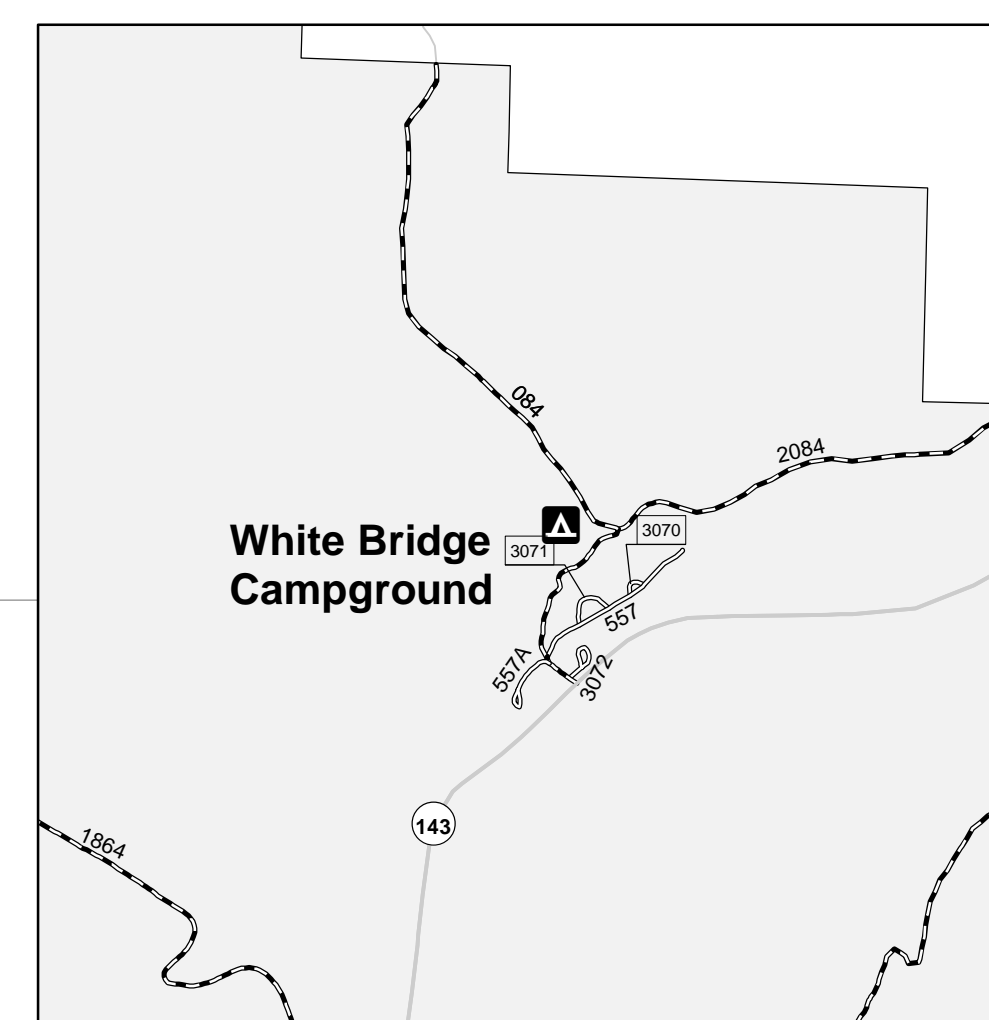
Seasonal Designation:
All routes with a seasonal designation are open from May 1st through November 30th.

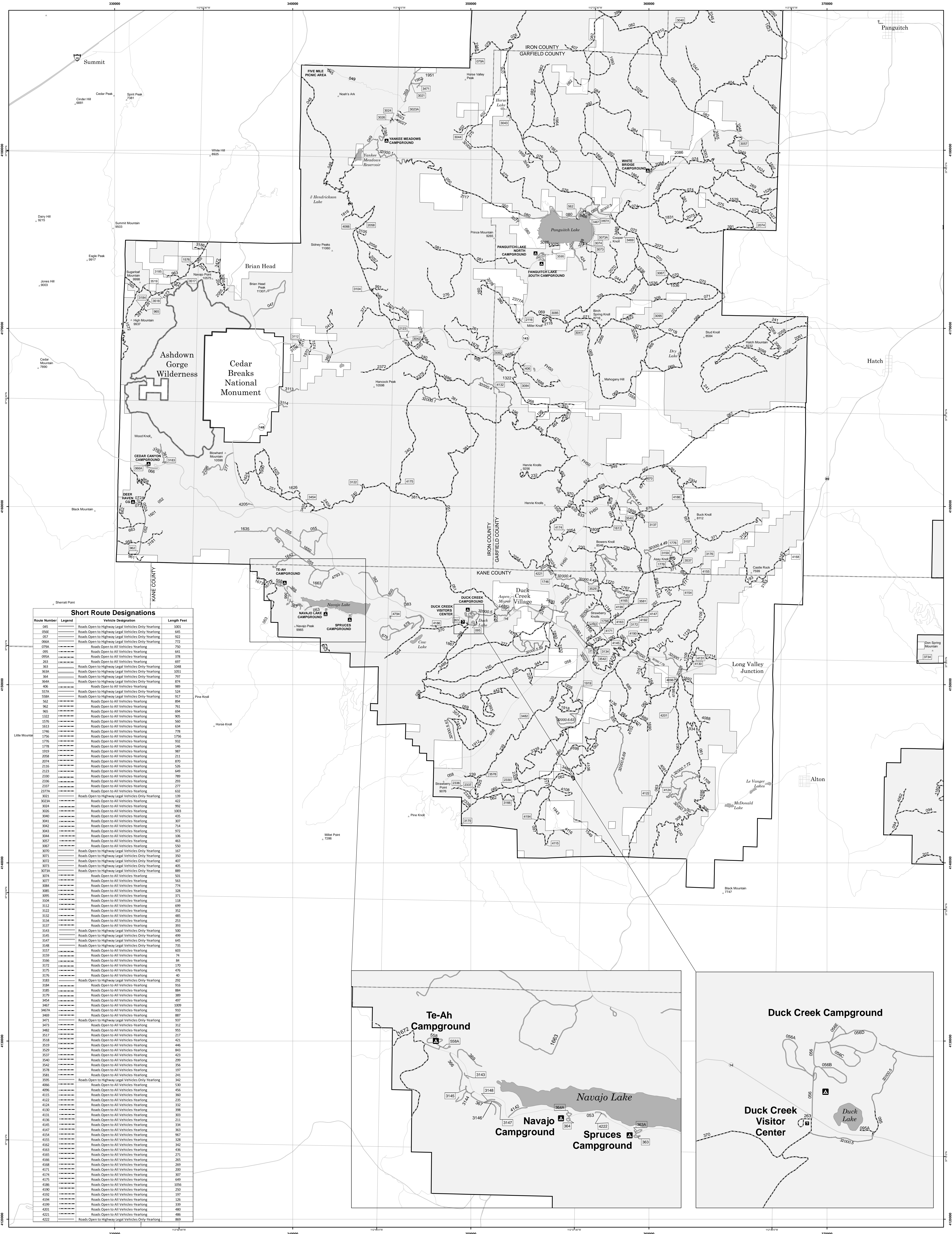
Special Designation:
All trails with a special designation are open to vehicles 72" or less in width

Dispersed Camping:
Motor Vehicle use off of designated roads and/or trails for the purpose of dispersed camping is permitted for up to 150 feet from the centerline of all roads and/or trails from the period of 01/01 to 12/31.

Short Route Designations

Route Number	Vehicle Designation	Length Feet
042A	Roads Open to Highway Legal Vehicles Only	600
045	Roads Open to Highway Legal Vehicles Only	1001
079A	Roads Open to All Vehicles	750
406	Roads Open to All Vehicles	989
557A	Roads Open to Highway Legal Vehicles Only	524
562	Roads Open to All Vehicles	894
965	Roads Open to All Vehicles	694
1322	Roads Open to All Vehicles	904
1576	Roads Open to All Vehicles	560
2058	Roads Open to All Vehicles-Yearlong	211
2074	Roads Open to All Vehicles	870
2116	Roads Open to All Vehicles-Yearlong	526
2123	Roads Open to All Vehicles	649
2377A	Roads Open to All Vehicles-Yearlong	632
3020	Roads Open to All Vehicles	645
3021	Roads Open to Highway Legal Vehicles Only	139
3023A	Roads Open to All Vehicles	422
3024	Roads Open to All Vehicles	992
3026	Roads Open to All Vehicles	1003
3040	Roads Open to All Vehicles	435
3041	Roads Open to All Vehicles	307
3042	Roads Open to All Vehicles	714
3043	Roads Open to All Vehicles	972
3044	Roads Open to All Vehicles	106
3057	Roads Open to All Vehicles	463
3067	Roads Open to All Vehicles	550
3070	Roads Open to Highway Legal Vehicles Only	167
3071	Roads Open to Highway Legal Vehicles Only	350
3072	Roads Open to Highway Legal Vehicles Only	407
3073	Roads Open to Highway Legal Vehicles Only	405
3073A	Roads Open to Highway Legal Vehicles Only	889
3074	Roads Open to All Vehicles	501
3077	Roads Open to All Vehicles	563
3084	Roads Open to All Vehicles	773
3085	Roads Open to All Vehicles	328
3095	Roads Open to All Vehicles	371
3104	Roads Open to All Vehicles	119
3112	Roads Open to All Vehicles	699
3184	Roads Open to All Vehicles	916
3185	Roads Open to All Vehicles	884
3467	Roads Open to All Vehicles	1009
3467A	Roads Open to All Vehicles	910
3469	Roads Open to All Vehicles	887
3471	Roads Open to Highway Legal Vehicles Only	937
3473	Roads Open to All Vehicles	312
3511	Roads Open to All Vehicles	398
3513	Roads Open to All Vehicles	865
3514	Roads Open to All Vehicles	528
3517	Roads Open to All Vehicles	217
3518	Roads Open to All Vehicles	421
3519	Roads Open to All Vehicles	446
3595	Roads Open to All Vehicles	342
4066	Roads Open to All Vehicles	530
4757	Roads Open to All Vehicles	348





Short Route Designations

Route Number	Vehicle Designation	Length Feet
065	Roads Open to Highway Legal Vehicles Only-Yearlong	3003
056E	Roads Open to Highway Legal Vehicles Only-Yearlong	645
057	Roads Open to Highway Legal Vehicles Only-Yearlong	922
066A	Roads Open to Highway Legal Vehicles Only-Yearlong	772
079A	Roads Open to All Vehicles-Yearlong	750
095	Roads Open to All Vehicles-Yearlong	641
095A	Roads Open to All Vehicles-Yearlong	378
263	Roads Open to All Vehicles-Yearlong	697
363	Roads Open to Highway Legal Vehicles Only-Yearlong	3048
363A	Roads Open to Highway Legal Vehicles Only-Yearlong	1051
364	Roads Open to Highway Legal Vehicles Only-Yearlong	797
364A	Roads Open to Highway Legal Vehicles Only-Yearlong	574
406	Roads Open to All Vehicles-Yearlong	989
557A	Roads Open to Highway Legal Vehicles Only-Yearlong	524
558A	Roads Open to Highway Legal Vehicles Only-Yearlong	937
562	Roads Open to All Vehicles-Yearlong	894
962	Roads Open to All Vehicles-Yearlong	763
965	Roads Open to All Vehicles-Yearlong	694
1332	Roads Open to All Vehicles-Yearlong	905
1576	Roads Open to All Vehicles-Yearlong	560
1613	Roads Open to All Vehicles-Yearlong	634
1746	Roads Open to All Vehicles-Yearlong	778
1756	Roads Open to All Vehicles-Yearlong	1756
1776	Roads Open to All Vehicles-Yearlong	932
1778	Roads Open to All Vehicles-Yearlong	146
1919	Roads Open to All Vehicles-Yearlong	587
2058	Roads Open to All Vehicles-Yearlong	211
2074	Roads Open to All Vehicles-Yearlong	870
2116	Roads Open to All Vehicles-Yearlong	526
2123	Roads Open to All Vehicles-Yearlong	649
2330	Roads Open to All Vehicles-Yearlong	789
2336	Roads Open to All Vehicles-Yearlong	292
2337	Roads Open to All Vehicles-Yearlong	277
2377A	Roads Open to All Vehicles-Yearlong	632
3021	Roads Open to Highway Legal Vehicles Only-Yearlong	239
3023A	Roads Open to All Vehicles-Yearlong	422
3034	Roads Open to All Vehicles-Yearlong	992
3036	Roads Open to All Vehicles-Yearlong	3033
3040	Roads Open to All Vehicles-Yearlong	475
3041	Roads Open to All Vehicles-Yearlong	307
3042	Roads Open to All Vehicles-Yearlong	714
3043	Roads Open to All Vehicles-Yearlong	972
3044	Roads Open to All Vehicles-Yearlong	106
3957	Roads Open to All Vehicles-Yearlong	463
3977	Roads Open to All Vehicles-Yearlong	550
3978	Roads Open to Highway Legal Vehicles Only-Yearlong	167
3979	Roads Open to Highway Legal Vehicles Only-Yearlong	350
3979A	Roads Open to Highway Legal Vehicles Only-Yearlong	407
3979B	Roads Open to Highway Legal Vehicles Only-Yearlong	405
3979C	Roads Open to Highway Legal Vehicles Only-Yearlong	889
3979A	Roads Open to Highway Legal Vehicles Only-Yearlong	801
3979B	Roads Open to All Vehicles-Yearlong	501
3979C	Roads Open to All Vehicles-Yearlong	563
3984	Roads Open to All Vehicles-Yearlong	774
3985	Roads Open to All Vehicles-Yearlong	328
3985	Roads Open to All Vehicles-Yearlong	371
3104	Roads Open to All Vehicles-Yearlong	1118
3112	Roads Open to All Vehicles-Yearlong	699
3122	Roads Open to All Vehicles-Yearlong	352
3132	Roads Open to All Vehicles-Yearlong	485
3134	Roads Open to All Vehicles-Yearlong	253
3137	Roads Open to All Vehicles-Yearlong	393
3143	Roads Open to Highway Legal Vehicles Only-Yearlong	330
3145	Roads Open to Highway Legal Vehicles Only-Yearlong	499
3147	Roads Open to Highway Legal Vehicles Only-Yearlong	645
3148	Roads Open to Highway Legal Vehicles Only-Yearlong	735
3157	Roads Open to All Vehicles-Yearlong	693
3159	Roads Open to All Vehicles-Yearlong	74
3166	Roads Open to All Vehicles-Yearlong	84
3172	Roads Open to All Vehicles-Yearlong	170
3175	Roads Open to All Vehicles-Yearlong	476
3176	Roads Open to All Vehicles-Yearlong	40
3183	Roads Open to Highway Legal Vehicles Only-Yearlong	292
3184	Roads Open to All Vehicles-Yearlong	916
3185	Roads Open to All Vehicles-Yearlong	884
3179	Roads Open to All Vehicles-Yearlong	389
3454	Roads Open to All Vehicles-Yearlong	497
3467	Roads Open to All Vehicles-Yearlong	1009
3467A	Roads Open to All Vehicles-Yearlong	910
3469	Roads Open to All Vehicles-Yearlong	887
3471	Roads Open to Highway Legal Vehicles Only-Yearlong	937
3473	Roads Open to All Vehicles-Yearlong	312
3482	Roads Open to All Vehicles-Yearlong	955
3517	Roads Open to All Vehicles-Yearlong	217
3518	Roads Open to All Vehicles-Yearlong	421
3519	Roads Open to All Vehicles-Yearlong	446
3529	Roads Open to All Vehicles-Yearlong	843
3537	Roads Open to All Vehicles-Yearlong	423
3540	Roads Open to All Vehicles-Yearlong	299
3542	Roads Open to All Vehicles-Yearlong	156
3578	Roads Open to All Vehicles-Yearlong	197
3581	Roads Open to All Vehicles-Yearlong	241
3595	Roads Open to Highway Legal Vehicles Only-Yearlong	342
4066	Roads Open to All Vehicles-Yearlong	530
4096	Roads Open to All Vehicles-Yearlong	456
4115	Roads Open to All Vehicles-Yearlong	360
4122	Roads Open to All Vehicles-Yearlong	335
4124	Roads Open to All Vehicles-Yearlong	332
4130	Roads Open to All Vehicles-Yearlong	398
4131	Roads Open to All Vehicles-Yearlong	393
4136	Roads Open to All Vehicles-Yearlong	211
4145	Roads Open to All Vehicles-Yearlong	334
4147	Roads Open to All Vehicles-Yearlong	363
4154	Roads Open to All Vehicles-Yearlong	967
4155	Roads Open to All Vehicles-Yearlong	328
4162	Roads Open to All Vehicles-Yearlong	342
4163	Roads Open to All Vehicles-Yearlong	436
4165	Roads Open to All Vehicles-Yearlong	271
4166	Roads Open to All Vehicles-Yearlong	265
4168	Roads Open to All Vehicles-Yearlong	369
4171	Roads Open to All Vehicles-Yearlong	200
4174	Roads Open to All Vehicles-Yearlong	307
4175	Roads Open to All Vehicles-Yearlong	649
4186	Roads Open to All Vehicles-Yearlong	1056
4190	Roads Open to All Vehicles-Yearlong	250
4192	Roads Open to All Vehicles-Yearlong	197
4204	Roads Open to All Vehicles-Yearlong	126
4211	Roads Open to All Vehicles-Yearlong	339
4201	Roads Open to All Vehicles-Yearlong	480
4211	Roads Open to All Vehicles-Yearlong	486
4222	Roads Open to Highway Legal Vehicles Only-Yearlong	869

