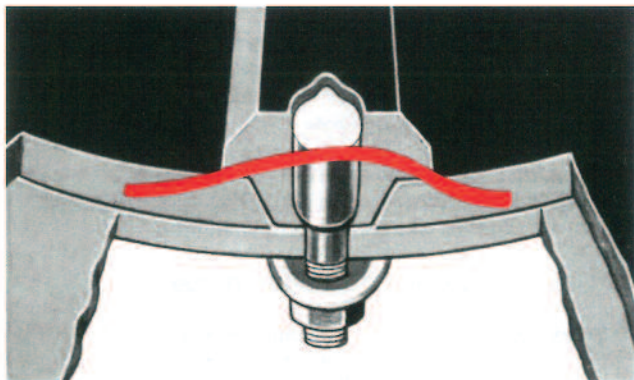
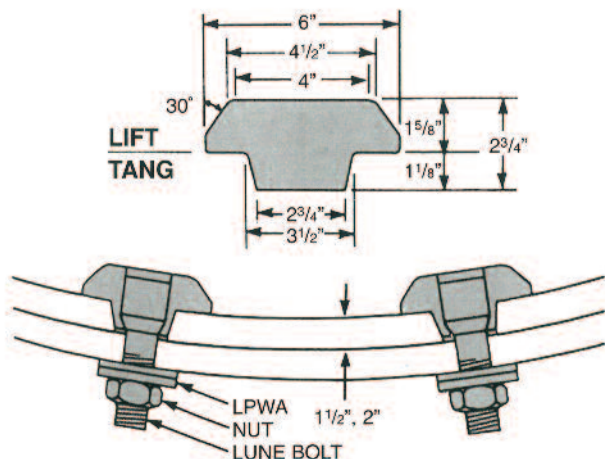


Type "A" **Lorain Lining**



Our Type A Liner

...is the **lightest liner** manufactured by **Johnstown Specialty Casting Inc.**, making it **ideal for final stage grinding**. Its **lightweight construction** minimizes **unnecessary load** on the mill, improving **energy efficiency** and **operational performance**.



JOHNSTOWN
SPECIALTY CASTINGS INC.
 dba
JOHNSTOWN LORAIN LINERS

545 Central Avenue
 Johnstown, PA 15902-2697

(814) 535-9000
 FAX (814) 535-9147
JohnstownLorainLiners.sales@jscastings.com



A Subsidiary of WHEMCO, Inc.

Home of the Lorain Liner



JOHNSTOWN
SPECIALTY CASTINGS INC.

Hot Rolled Lorain Mill Linings

Made in America
and in operation for over 80 years.

Grinding Mill Products Division



JOHNSTOWN
SPECIALTY CASTINGS INC.



Lorain Linings



Type "D" Lorain Lining



Advanced 3-Piece Leak-Proof Fastening System

Why Choose Our Mill Liners?

Engineered for Maximum Durability

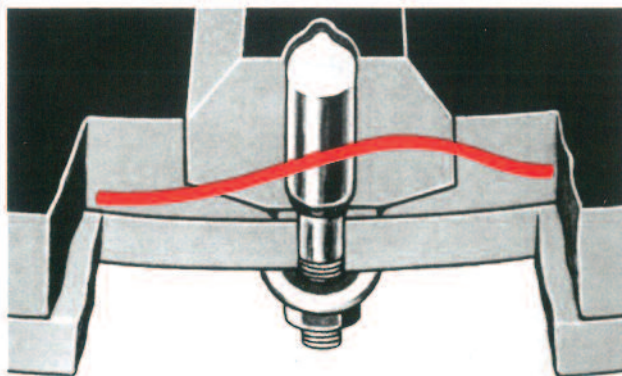
- **Superior Material** – Made from our specially formulated, **hot-rolled alloy steel** for unmatched **strength and longevity**.
- **Built for Tough Environments** – Designed to withstand the most **demanding grinding conditions** while maintaining **peak performance**.
- **Precision Manufacturing** – Machined to **exacting tolerances** with precision down to **1/16 of an inch**, ensuring a **perfect fit** and **eliminating** the need for **liner backing**.

Unmatched Strength & Wear Resistance

- **Higher Impact Resistance** – Hot-rolled steel's **refined grain structure** makes it **tougher** and more **impact-resistant** than **brittle castings**.
- **Greater Fatigue Resistance** – The **rolling process aligns the grain structure**, enhancing **durability** and extending **liner lifespan**.
- **Even Wear Rate** – Provides **consistent, predictable performance** over time.

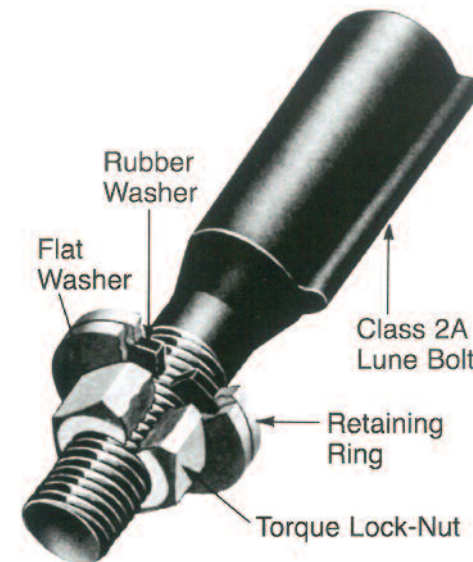
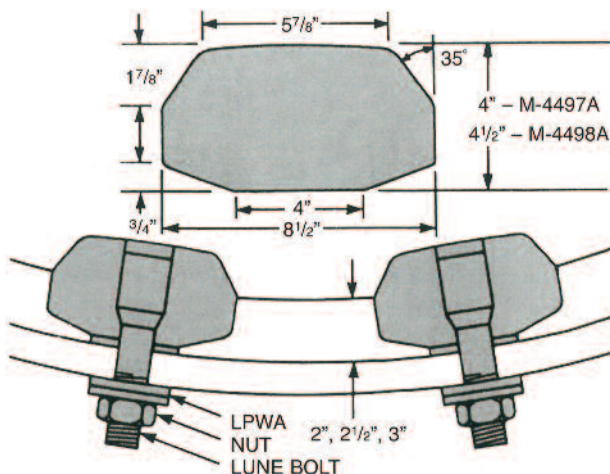
Proven Reliability & Longevity

- **Extreme Hardness** – Achieves up to **500 hardness** with **uniform hardness** throughout the liner.
- **Flawless Quality** – Hot rolling **eliminates defects** like **voids, porosity, and shrinkage cavities** for **superior integrity**.
- **Self-Strengthening** – **Work-hardening** properties naturally **enhance wear resistance** over time.



Our Type D Liner

...is engineered for **exceptional durability** and **cost-efficiency**. Its **reinforced construction** provides **superior resistance to impact and abrasion**, making it an **excellent choice** for operations that demand **extended liner longevity** or **extremely harsh grinding environments**.



Our Advanced 3-Piece Fastening System

...is designed to provide **maximum security and reliability** in demanding Grinding environments. Engineered for a **tight, leak-proof fit**, this system enhances liner stability, reducing the risk of unwanted movement or seal failure.

Its **user-friendly design** allows for **quick and hassle-free installation**, minimizing maintenance time and downtime. Built for **exceptional holding power**, it is specifically designed to **withstand high-impact conditions**, ensuring long-term performance and durability in even the most rigorous grinding applications.