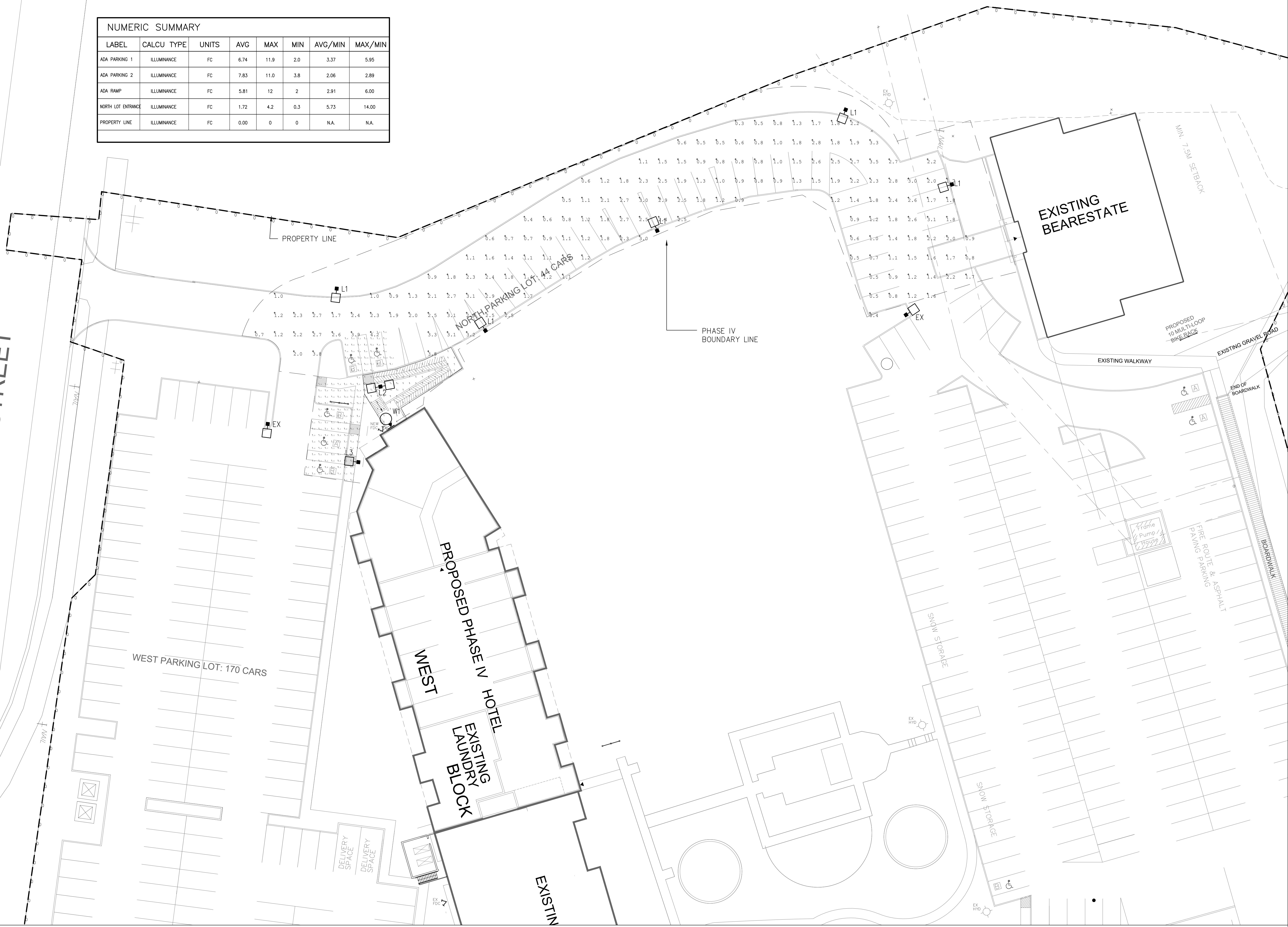


NUMERIC SUMMARY							
LABEL	CALCU TYPE	UNITS	AVG	MAX	MIN	AVG/MIN	MAX/MIN
ADA PARKING 1	ILLUMINANCE	FC	6.74	11.9	2.0	3.37	5.95
ADA PARKING 2	ILLUMINANCE	FC	7.83	11.0	3.8	2.06	2.89
ADA RAMP	ILLUMINANCE	FC	5.81	12	2	2.91	6.00
NORTH LOT ENTRANCE	ILLUMINANCE	FC	1.72	4.2	0.3	5.73	14.00
PROPERTY LINE	ILLUMINANCE	FC	0.00	0	0	N.A.	N.A.

BALSAM STREET



EXISTING BEARESTATE

PROPOSED PHASE IV HOTEL
WEST
EXISTING LAUNDRY BLOCK

WEST PARKING LOT: 170 CARS

NORTH PARKING LOT: 44 CARS

STAMP

4.	ISSUED FOR SPA REVISION	JAN 11, 2019	ML
3.	ISSUED FOR PRICING	AUG 28, 2018	ML
2.	ISSUED FOR REVIEW	AUG 17, 18	ML
1.	ISSUED FOR SPA	APR 03, 18	ML
NO	REVISION	DATE	BY

HL ENGINEERING LTD
14721 WOODBINE AVE, STOUFFVILLE, ON
L4A 2G7 905-713-0003 www.Hlengineering.ca

HENRY W CHIU ARCHITECT
2347 KENNEDY ROAD
SUITE 507, SCARBOROUGH
ONTARIO M1T 3T8
TEL: 416-298-4085

PROJECT TITLE
LAW DEVELOPMENT GROUP
HARBOUR CASTLE HOTEL PHASE IV
9 HARBOUR STREET EAST, COLLINGWOOD, ON

TITLE: SITE PLAN - PHOTOMETRIC ANALYSIS
SCALE: AS SHOWN DRAWN BY: LS
DATE: NOV 21, 2017 ISSUED: ML
PROJ NO: 10154F DWG NO: E102A
SITE PLAN APPLICATION FILE NO: