

# **SHOCK WAVE THERAPY**

## **SWAVE-200**



- Unique, non-invasive solution
- 3-4 treatments needed at weekly intervals
- About 10 minutes for each treatment session

# HIGHLY EFFECTIVE PAIN TREATMENT



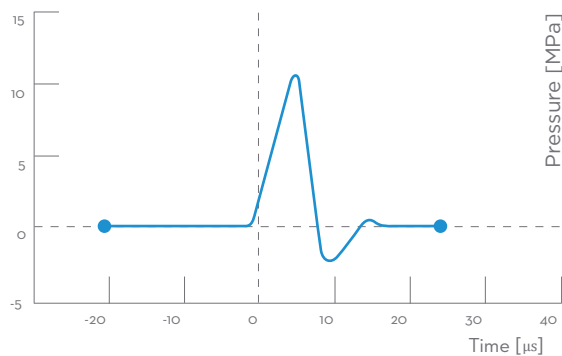
Shock wave therapy is new non-invasive solution for chronic musculoskeletal pain. The Extracorporeal Shockwave therapy is frequently used in physiotherapy, osteology and sports medicine. Applications are mostly associated with the treatment of chronic muscular and tendon disorders, back and cervical pain.

During the therapy, a high intensity acoustic wave interacts with the tissues of the body. This leads to a cascade of beneficial effects including neovascularisation in growth, reversal of chronic inflammation, stimulation of collagen and dissolution of calcium build-up. Stimulation of these biological mechanisms creates an optimal healing environment. As the injured area is returned to normal, functionality is restored and pain is relieved.

Swave-200 Shock wave is a powerful and compact shockwave system which supplied with ergonomically shaped applicator with extremely long lifetime.

# MECHANISM OF ACTION

The shock wave therapy apparatus uses the electromagnetic wave effect to produce a mechanical shock wave that can penetrate into human tissues, focusing on the diseased part of the body and passing through. The over focused shock wave acts on the painful part of the body to stimulate healing, tissue regeneration, and repair, thus achieving therapeutic goals.



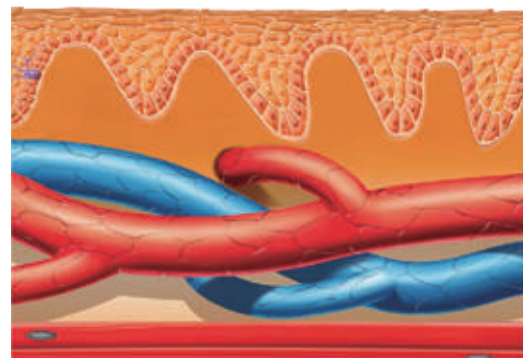
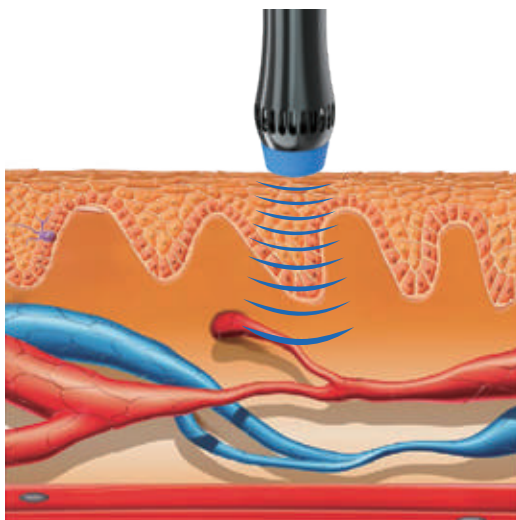
Shockwaves are characterized by jump change in pressure, high amplitude and non-periodicity.



The kinetic energy of the projectile, created by compressed air, is transferred to the transmitter at the end of the applicator.

The production of a sufficient amount of collagen is a necessary precondition for the repair processes to the damaged myoskeletal and ligamentous structures.

The SWT technology accelerates removal of nociceptive metabolites, increases oxygenation and supplies the damaged tissue with a source of energy. It supports removal of histamine, lactic acid and other irritating agents.



# MEDICAL EFFECTS

DECREASE OF MUSCLE TENSION  
INHIBITION OF SPASMS



- Cavitations effect
- Stimulation of stem cells
- Increase of cell wall permeability
- Dissolving of calcified fibroblasts
- Reduction of unmyelinated nerves
- Energy release at acoustic boundaries
- Enhanced the dispersion of substance P
- Stimulation of microcirculation (blood, lymph)
- Stimulation of growth factors (neogenesis of vessels, bone, collagen)
- Release of nitric oxide (vasodilatation, increased cell metabolism, anti-inflammatory effect)

# MOST COMMON INDICATIONS

Indications include: painful shoulder, epicondylitis, low back pain, Achilles tendon pain, tendonitis and trigger points.



Rotator cuff tendinitis & calcific



Various trigger points throughout the body



Trochanteric bursitis



Tennis golfer's elbow



Patellar tendinitis & shin pain



Fasciitis & Achilles

# MOST COMMON APPLICATIONS

Lotuxs has developed shock wave therapy treatment parameters for easy and effective treatment.

## Painful Shoulder ( Calcification, tendonitis, Impingement syndrome )

<b>Therapy parameters</b>	pressure: 3-4 bar frequency: 10-15 Hz number of shocks: 2000	<b>Patient position</b> <b>Frequency of treatments</b> <b>Number of treatments</b>	lying on back or sitting upright 5-10 days 3-5 sessions
---------------------------	--	--	---

## Heel spur, plantar fasciitis

<b>Therapy parameters</b>	pressure: 2.5-3.5 bar frequency: 10-15 Hz number of shocks: 2000	<b>Patient position</b> <b>Frequency of treatments</b> <b>Number of treatments</b>	lying prone supported under the ankle 5-10 days 3-5 sessions
---------------------------	--	--	--

## Radial/ulnar epicondylitis

<b>Therapy parameters</b>	pressure: 2-2.5 bar frequency: 5-10 Hz number of shocks: 2000	<b>Patient position</b>  <b>Frequency of treatments</b> <b>Number of treatments</b>	lying on back or sitting upright with the arm at a right-angle flexion at the elbow; arm should be comfortably supported, preferably with a soft cushioning pad 5-10 days 3-5 sessions
---------------------------	---	--	--

## Achillodynia

<b>Therapy parameters</b>	pressure: 2-3 bars frequency: 5-10 Hz	<b>Patient position</b> <b>Frequency of treatments</b> <b>Number of treatments</b>	lying on back supported with knee 5-10 days 3-5 sessions
---------------------------	--	--	--

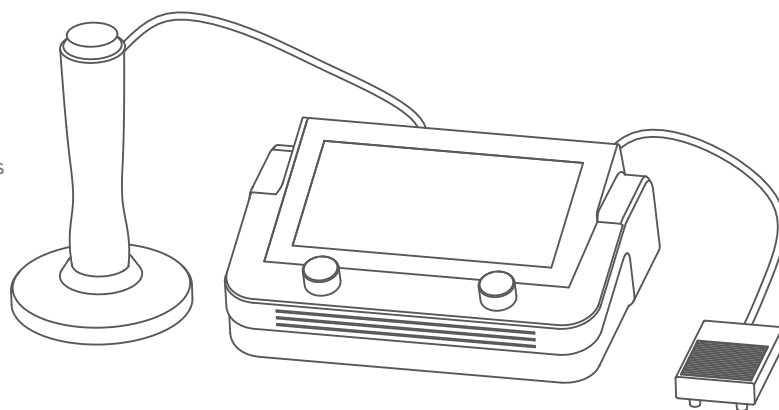


# MACHINE FEATURES

Portable and modern stylish, machine net wet 3KG

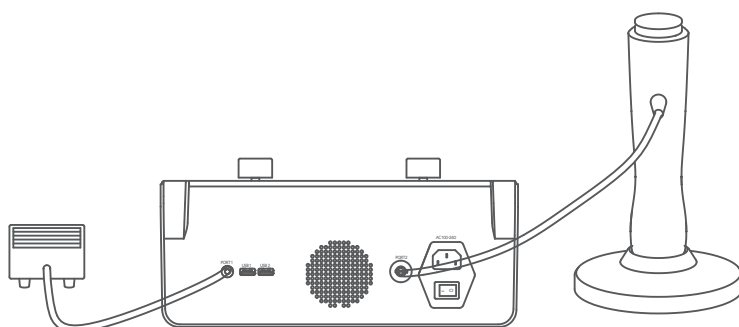
Adjustable pressure and frequency. pressure up to 6bars / 210mJ; frequency up to 16 Hz

Multi preset protocols for different treatment



10.1" color Touch screen, very easy to operate

Customer based Ergonomic design



## Simple operation



Locating painful spots



Delivering shockwaves

## SPECIFICATIONS

Product Name	Shock wave therapy apparatus
Model No.	Swave-200
Shock wave type	Electromagnetic
Switching mode	Pedal switch
Energy	60-210mJ (1-6 BAR)
Frequency	1-16Hz
Working mode	Continuous(multi model for option)
Handle cooling mode	Air cooling
Power source	100-240VAC 50/60Hz
Input power	350W
handle lifespan	over 3,000,000 shocks
Therapeutic head	7pcs
Dimension	320*133*244mm
Weight	3kg