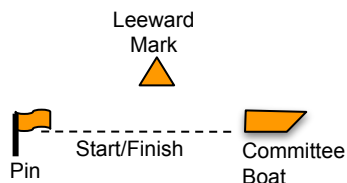


# ASSA Regatta Course Diagrams and Descriptions - 2024



## Short Course

Option 1 - Windward start, leg 1 to the windward mark, leg 2 to the gybe mark, leg 3 to the leeward mark, leg 4 to the windward mark, leg 5 to the finish line; all port roundings. About 5.4 nm.

Option 2 Windward start, leg 1 to the windward mark, leg 2 to the gybe mark, let 3 to the finish line; all port roundings. About 3.4 nm.

Leeward Mark to Windward Mark will be about 1nm. Windward Mark to Gybe Mark will be about 1nm. Gybe Mark to Leeward mark will be about 1.3 nm.

Three races are planned when using this course.

## Middle Distance Course

Option 1 - Windward start, leg 1 to the windward mark, leg 2 to the gybe mark, leg 3 to the leeward mark, leg 4 to the windward mark (may not cross start/finish line or pass between the Pin and Committee Boat), leg 5 to the leeward mark (may not cross start/finish line or pass between the Pin and Committee Boat), and leg 6 to the finish line; all port roundings.

Option 2 - Windward start, leg 1 to the windward mark, leg 2 to the gybe mark, leg 3 to the leeward mark, leg 4 to the finish line; all port roundings.

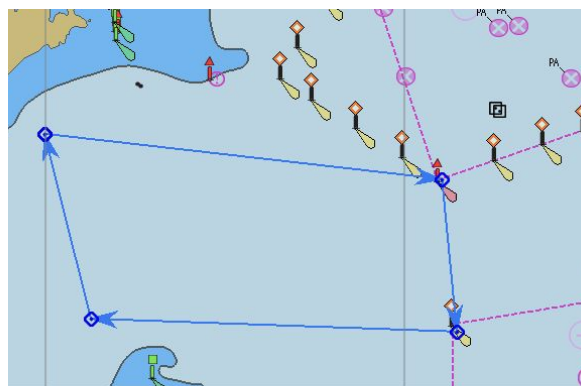
Two races of 6-8 miles are planned when using this course. The distance for each leg will be determined based on forecasted wind and weather conditions.



## Distance Race Course

The course will be generally laid out within the blue polygon to the left. The start and finish lines may or may not be in the same location. Skippers should anticipate legs featuring most points of sail. The course to sail will be between 8 - 12 nm depending on forecasted wind and weather conditions and will be announced in advance.

Start times will be announced along with the course to race. We will follow a staggered, pursuit start format, with the highest PHRF boats leaving before the lowest PHRF boats.



Start/Finish  
This is a closed gate unless a boat is starting or finishing

