

**Technical Report
W259CK Minor Modification**

**Non-adjacent channel change
requested per FCC 19-40.**

This technical report is submitted for a minor modification to W259CK at Glasgow, KY, FCC file number BLFT-20161102AABE. A move to channel 247 is requested, in accordance with CFR §74.1233(a)(1) as modified in Report and Order FCC 19-40, May 9, 2019, allowing non-adjacent channel changes "...upon a showing of interference to or from any other broadcast station...". The translator will serve as a fill-in facility to rebroadcast WOVO(FM) 292C2 HD4 at Horse Cave, KY, FCC facility I.D. 48702.

W259CK Modification Analysis:

An overlap study in exhibit E-1 shows the current W259CK facility has a 64.9 km incoming interference contour overlap from the co-channel WWTN(FM) 259C0 facility at Hendersonville, TN (exhibit E-2). The modification to the non-adjacent channel 247 (exhibit E-3) eliminates all incoming co-channel or adjacent channel interference overlaps.

The proposed facility at channel 247 is within the WBVR-FM 244C2 third adjacent protected contour. Using the vertical elevation pattern of the Nicom BKG77 two bay, 0.85 wavelength-spaced antenna (exhibit E-4), the +40 112.76 F(50-10) dBu interfering contour (exhibit E-5) lowest point = 41.6 meters above the site, which does not reach any population, buildings or roads (exhibit E-6). The 60 dBu F(50-50) contour is within the primary WOVO(FM) 292C2 HD4 60 dBu analog equivalent contour

(exhibit E-7).

Antenna System:

The W259CK modification to 247D will remain located on the existing 147 meter tower, ASR 1063307, at coordinates:

36 57 34N 86 00 08W NAD 27

A Nicom BKG77 two bay, 0.85 wavelength-spaced, nondirectional antenna is mounted at a COR AGL of 116 meters, 323 meters AMSL, 110 meter HAAT (exhibit E-8) and operate at 0.250 kW ERP.

RF Exposure Calculation:

The RF contribution was calculated using the formula from the OET Bulletin 65:

$$S \text{ (RF in microwatts/cm}^2\text{)} = \frac{33.4 \times F^2 \times (H \text{ ERP} + V \text{ ERP in watts})}{R^2 \text{ (height of radiation center in meters}^2\text{)}}$$

Using a worst-case vertical (F) factor of 1.000, the RF is calculated to be 1.29 $\mu\text{W/cm}^2$ to the ground, which is below 5% of the 200 $\mu\text{W/cm}^2$ maximum permissible for controlled exposure, allowing exclusion from consideration.

Conclusion:

It is concluded that the W259CK modification complies with all Commission rules and policies.



Christopher Anderson May 28, 2019
andersce@bham.rr.com
© 2019 Anderson Associates

E-1 W259CK Current Overlap Study

REFERENCE CH# 259D - 99.7 MHz, Pwr= 0.25 kW, HAAT= 110.4 M, COR= 323 M DISPLAY DATES
 36 57 34.0 N. Average Protected F(50-50)= 13.5 km DATA 05-24-19
 86 00 08.0 W. Omni-directional SEARCH 05-24-19

CH CITY	CALL	TYPE STATE	ANT	AZI <--	DIST FILE #	LAT LNG	PWR(kW) HAAT(M)	INT(km) COR(M)	PRO(km) LICENSEE	*IN* (Overlap in km)	*OUT*
259CO Hendersonville	WWTN	LIC_CX TN		200.3 20.0	135.25 BLH20080428AAL	35 49 03.0 86 31 24.0	100.000 395	184.9 604	81.7 Cumulus Licensing Lic	-64.9*	4.0
259D Glasgow	W259CK	LIC_C_ KY		0.0 0.0	0.00 BLFT20161102ABE	36 57 34.0 86 00 08.0	0.250	323	---Reference--- Charles M. Anderson		
261D Scottsville	W261DO	CP_C_ KY		252.4 72.3	17.43 BNPFT20171221AEY	36 54 43.0 86 11 21.0	0.250	1.1 447	21.0 Skytower Communications Gr	1.2	-4.7*
257A Scottsville	WVLE	LIC_CN KY		212.3 32.2	28.82 BLH19960603KC	36 44 25.0 86 10 31.0	6.000 100	2.9 316	27.9 Skytower Communications Gr	10.7	-0.2
260C3 Mansville	WVLC	LIC_CN KY		71.9 252.4	75.64 BLH19950127KD	37 10 04.0 85 11 26.0	11.000 150	59.0 413	39.6 Shoreline Communications,	4.2	17.1
259B Louisville	WDJX	LIC_CN KY		5.2 185.3	156.90 BLH19870522KC	38 21 53.0 85 50 18.0	24.000 218	133.2 413	67.4 Alpha Media Licensee Lic	10.4	26.9
256A Edmonton	WHSX	LIC_CN KY		79.4 259.6	40.49 BLH19960508KB	37 01 33.0 85 33 14.0	6.000 100	2.7 358	27.1 South 65 Communications, L	25.5	12.1
260A Hartford	WXMZ	LIC_CX KY		302.4 121.9	83.86 BLH20120906ABZ	37 21 38.0 86 48 14.0	6.000 100	43.6 244	28.1 Radio Active Media, Inc.	26.5	34.4
205C1 Bowling Green	WKYU-FM	LIC_CX KY		284.7 104.3	58.11 BMLED20070507AFC	37 05 23.0 86 38 05.0	100.000 219	21.5 383	6.5 Western Kentucky Universit	21.5R	36.6M

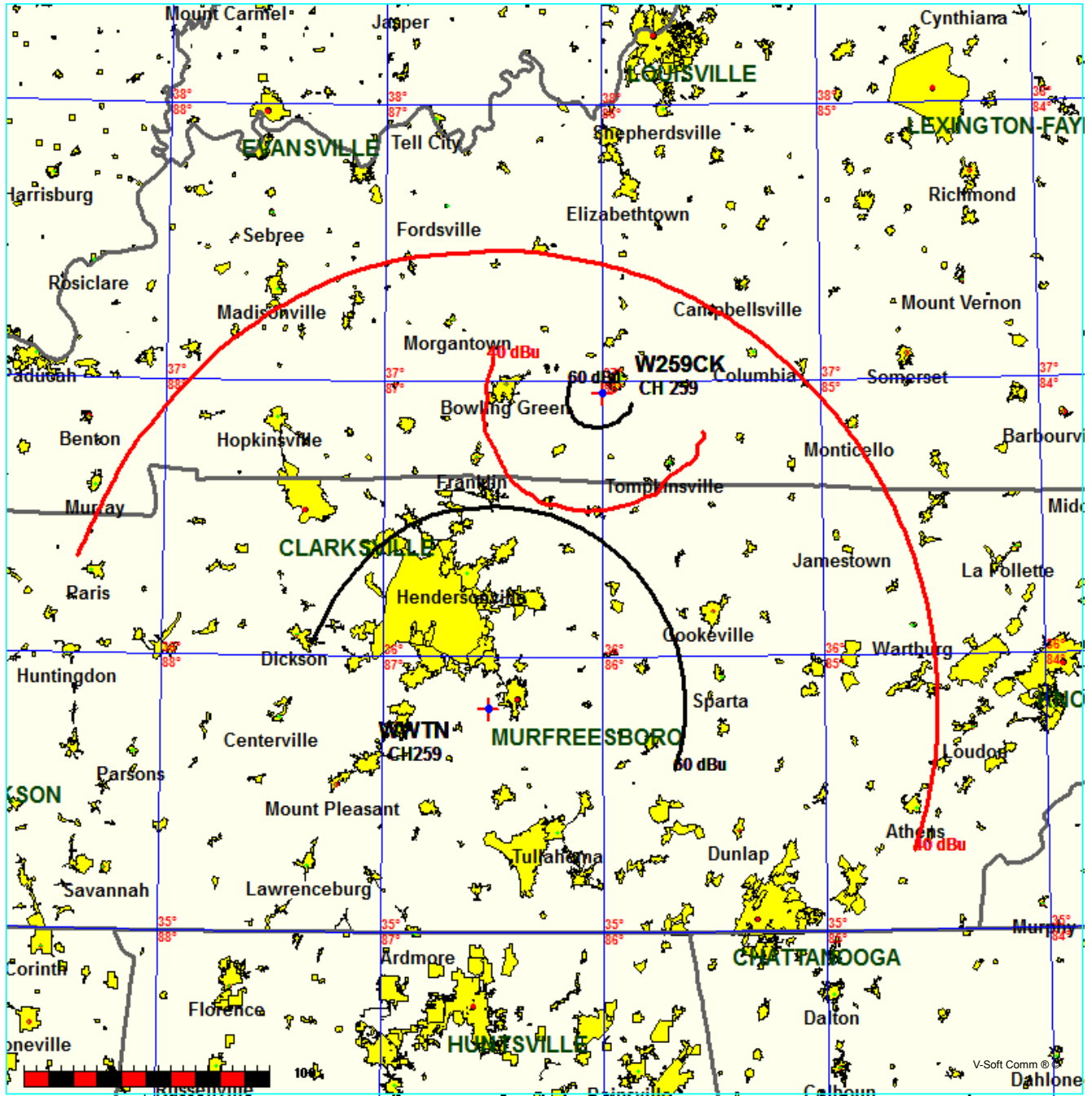
Terrain database is GLOBE 30 Sec , R= 73.215 qualifying spacings or FCC minimum spacings in KM, M= Margin in KM
 In & Out distances between contours are shown at closest points. Reference zone= East Zone, Co to 3rd adjacent.
 All separation margins (if shown) include rounding.
 Ant Column: (D= DA Standard, Z= DA 73.215, N= Not DA 73.215, _= Omni), Polarization (C,H,V,E), Beamtilt(Y,N,X)
 "*"affixed to 'IN' or 'OUT' values = site inside restricted contour.
 « = Station meets FCC minimum distance spacing for its class.

E-2 W259CK Interference Plot to WWTN(FM) 259C0

FMCommander Single Allocation Study - 05-28-2019 - GLOBE 30 Sec
W259CK's Overlaps (In= -64.9 km, Out= 4.03 km)

W259CK CH 259 D
Lat= 36 57 34.0, Lng= 86 00 08.0
0.25 kW 110 m HAAT, 323 m COR
Prot.= 60 dBu, Intef.= 40 dBu

WWTN CH 259 C0 BLH20080428AAL
Lat= 35 49 03.0, Lng= 86 31 24.0
100.0 kW 395 m HAAT, 604 m COR
Prot.= 60 dBu, Intef.= 40 dBu



E-3 W259CK Mod. 247D Overlap Study

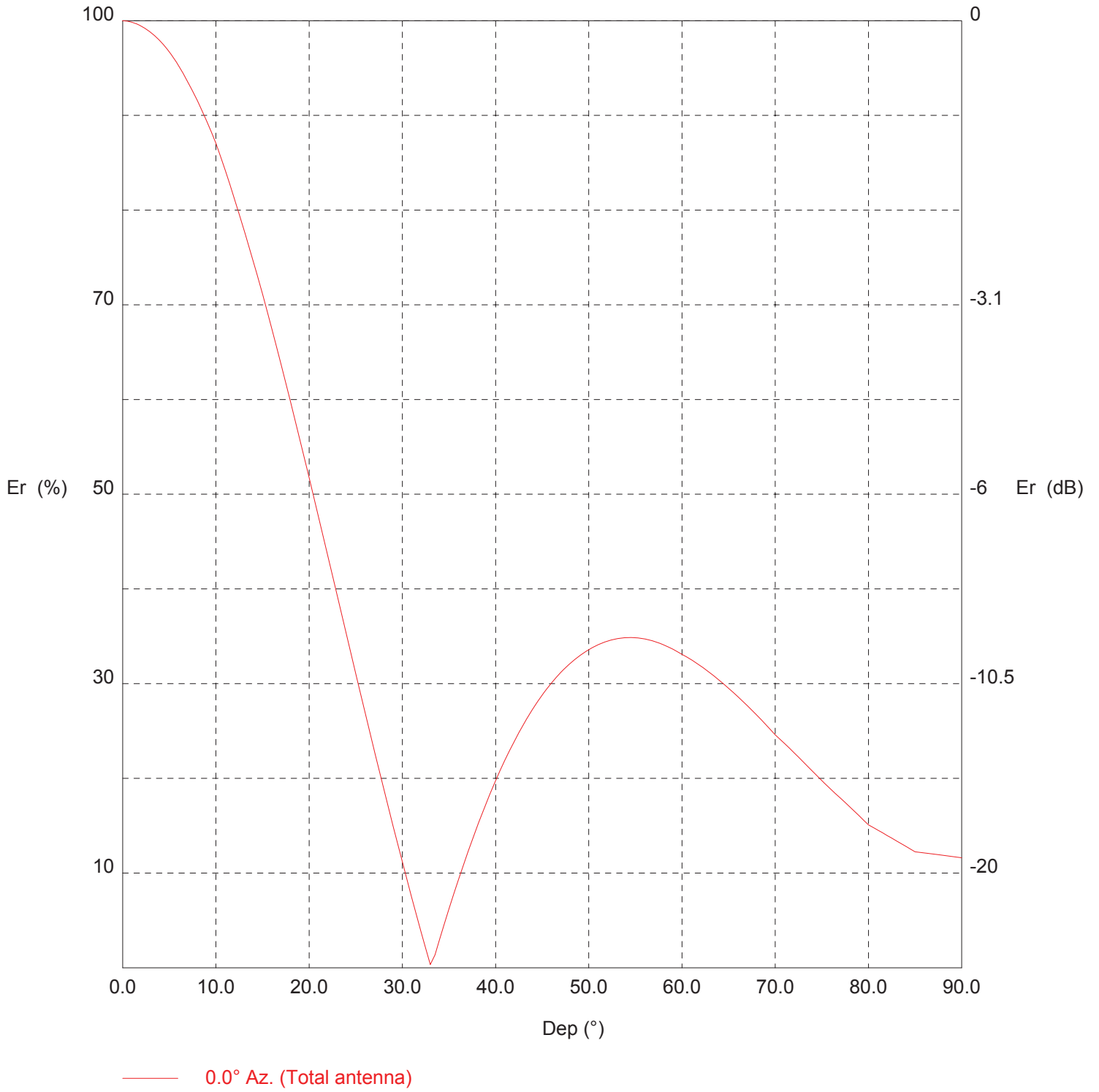
REFERENCE		CH# 247D - 97.3 MHz, Pwr= 0.25 kW, HAAT= 110.0 M, COR= 323 M							DISPLAY DATES		
36 57 34.0 N.		Average Protected F(50-50)= 13.5 km							DATA 05-23-19		
86 00 08.0 W.		Omni-directional							SEARCH 05-23-19		
CH CITY	CALL	TYPE STATE	ANT	AZI <--	DIST FILE #	LAT LNG	PWR(kW) HAAT(M)	INT(km) COR(M)	PRO(km) LICENSEE	*IN* (Overlap in km)	*OUT*
244C2 Auburn	WBVR-FM	LIC NCX KY		240.5 60.3	26.19 BLH20030325AAH	36 50 35.0 86 15 30.0	45.000 129	5.4 317	48.6 Forever Communications, In	5.7	-23.5*(1)
248D Bowling Green	W248CF	LIC _C_ KY		270.3 89.9	48.39 BLFT20170104AAN	36 57 37.0 86 32 49.0	0.250	23.0 297	15.1 Charles M. Anderson	11.1	12.3
248D Lafayette	W248CX	LIC _C_ TN		180.6 0.6	47.19 BLFT20180508AAH	36 32 06.0 86 00 27.0	0.250	21.1 355	13.9 Lafayette Broadcasting Com	12.2	12.0
246C2 Belle Meade	WLVU	LIC NCX TN		222.7 42.2	104.76 BLED20180212AAU	36 15 49.6 86 47 38.9	20.500 237	75.5 419	51.0 Educational Media Foundati	13.7	30.1
248C1 Louisville	WAMZ	LIC _CX KY		10.9 191.1	125.09 BMLH20080402AAP	38 03 50.0 85 43 52.0	100.000 205	96.4 372	65.2 Cc Licenses, LIc	15.4	39.8
247L1 Gainesboro	WENV-LP	LIC _ TN		167.2 347.3	77.20 BLL20040223APC	36 16 56.0 85 48 39.0	0.028 55	247	50.6 Save The Cumberland, Inc.		26.8
246C2 Somerset	WJQQ	LIC _CN KY		89.5 270.3	127.35 BLH19910219KB	36 57 40.0 84 34 07.0	27.500 201	79.4 491	53.7 Capstar Tx, LIc	36.0	57.5
250C0 Nashville	WSIX-FM	LIC _CX TN		216.4 35.9	125.53 BMLH20050826ABB	36 02 50.0 86 49 48.0	100.000 349	11.5 550	79.1 Capstar Tx, LIc	98.5	45.3
300A Burkesville	WKYR-FM	LIC _CN KY		108.5 288.9	58.58 BLH19880117KD	36 47 26.0 85 22 47.0	6.000 95	21.5 328	6.5 River Country Communicatio	9.5R	49.1M

Terrain database is GLOBE 30 Sec , R= 73.215 qualifying spacings or FCC minimum Spacings in KM, M= Margin in KM
 In & Out distances between contours are shown at closest points. Reference zone= East Zone, Co to 3rd adjacent.
 All separation margins (if shown) include rounding.
 Ant Column: (D= DA Standard, Z= DA 73.215, N= Not DA 73.215, _= Omni), Polarization (C,H,V,E), Beamtilt(Y,N,X)
 "*"affixed to 'IN' or 'OUT' values = site inside restricted contour.
 « = Station meets FCC minimum distance spacing for its class.

(1) The +40 112.76 F(50-10) dBu contour within the WBVR-FM 244C2 third-adjacent protected contour (exhibit E-5) lowest point = 41.6 meters above the site elevation, which does not reach any population, roads or buildings, as shown in the aerial photo (exhibit E-6).

E-4 W259CK Mod. 247D Antenna Vertical Elevation Pattern and Tabulation

Vertical diagram



TX station: BKG77/2 GENERIC

Frequency: 98.10 MHz

Vertical diagram at an azimuth of 0° degrees

Dep (°)	Er (%)	ERP (W)	Dep (°)	Er (%)	ERP (W)	Dep (°)	Er (%)	ERP (W)
0.0	100.0	914.2	30.0	11.2	11.5	60.0	33.1	100.1
0.5	100.0	913.3	30.5	9.3	7.9	60.5	32.8	98.4
1.0	99.8	911.3	31.0	7.5	5.1	61.0	32.5	96.7
1.5	99.7	908.1	31.5	5.6	2.9	61.5	32.2	94.8
2.0	99.4	903.9	32.0	3.8	1.3	62.0	31.9	92.8
2.5	99.1	898.4	32.5	2.1	0.4	62.5	31.5	90.8
3.0	98.8	891.9	33.0	0.3	0.0	63.0	31.1	88.7
3.5	98.4	884.3	33.5	1.4	0.2	63.5	30.8	86.5
4.0	97.9	875.7	34.0	3.0	0.8	64.0	30.4	84.2
4.5	97.3	865.9	34.5	4.6	2.0	64.5	29.9	81.9
5.0	96.7	855.2	35.0	6.2	3.5	65.0	29.5	79.5
5.5	96.0	842.7	35.5	7.8	5.5	65.5	29.1	77.2
6.0	95.2	829.2	36.0	9.3	7.9	66.0	28.6	74.8
6.5	94.4	814.9	36.5	10.7	10.5	66.5	28.2	72.5
7.0	93.5	799.7	37.0	12.1	13.5	67.0	27.7	70.0
7.5	92.6	783.6	37.5	13.5	16.7	67.5	27.2	67.6
8.0	91.6	766.9	38.0	14.9	20.2	68.0	26.7	65.1
8.5	90.5	749.4	38.5	16.1	23.8	68.5	26.2	62.7
9.0	89.4	731.2	39.0	17.4	27.7	69.0	25.7	60.2
9.5	88.3	712.5	39.5	18.6	31.6	69.5	25.1	57.8
10.0	87.1	693.1	40.0	19.8	35.7	70.0	24.6	55.3
10.5	85.7	670.8	40.5	20.9	39.8	70.5	24.1	53.3
11.0	84.2	648.2	41.0	21.9	43.9	71.0	23.7	51.2
11.5	82.7	625.3	41.5	22.9	48.1	71.5	23.2	49.2
12.0	81.2	602.3	42.0	23.9	52.2	72.0	22.7	47.2
12.5	79.6	579.0	42.5	24.8	56.4	72.5	22.2	45.2
13.0	78.0	555.7	43.0	25.7	60.4	73.0	21.7	43.2
13.5	76.3	532.4	43.5	26.5	64.4	73.5	21.2	41.3
14.0	74.6	509.1	44.0	27.3	68.3	74.0	20.7	39.3
14.5	72.9	485.8	44.5	28.1	72.1	74.5	20.2	37.4
15.0	71.1	462.7	45.0	28.8	75.8	75.0	19.7	35.5
15.5	69.3	439.1	45.5	29.5	79.3	75.5	19.3	33.9
16.0	67.4	415.8	46.0	30.1	82.7	76.0	18.8	32.4
16.5	65.6	392.9	46.5	30.7	85.9	76.5	18.4	30.8
17.0	63.6	370.3	47.0	31.2	88.9	77.0	17.9	29.3
17.5	61.7	348.1	47.5	31.7	91.8	77.5	17.4	27.8
18.0	59.8	326.5	48.0	32.1	94.4	78.0	17.0	26.4
18.5	57.8	305.3	48.5	32.6	96.9	78.5	16.5	24.9
19.0	55.8	284.7	49.0	32.9	99.2	79.0	16.0	23.5
19.5	53.8	264.7	49.5	33.3	101.2	79.5	15.6	22.1
20.0	51.8	245.3	50.0	33.6	103.1	80.0	15.1	20.8
20.5	49.7	226.1	50.5	33.9	104.8	80.5	14.8	20.0
21.0	47.6	207.5	51.0	34.1	106.3	81.0	14.5	19.3
21.5	45.6	189.8	51.5	34.3	107.6	81.5	14.3	18.6
22.0	43.5	172.8	52.0	34.5	108.7	82.0	14.0	17.8
22.5	41.4	156.7	52.5	34.6	109.6	82.5	13.7	17.1
23.0	39.3	141.3	53.0	34.7	110.3	83.0	13.4	16.4
23.5	37.2	126.8	53.5	34.8	110.8	83.5	13.1	15.7
24.0	35.2	113.0	54.0	34.9	111.1	84.0	12.8	15.0
24.5	33.1	100.1	54.5	34.9	111.2	84.5	12.5	14.4
25.0	31.0	88.1	55.0	34.9	111.1	85.0	12.2	13.7
25.5	29.0	76.8	55.5	34.8	110.7	85.5	12.2	13.6
26.0	26.9	66.3	56.0	34.7	110.2	86.0	12.1	13.4
26.5	24.9	56.7	56.5	34.6	109.4	86.5	12.1	13.3
27.0	22.9	47.9	57.0	34.5	108.5	87.0	12.0	13.2
27.5	20.9	39.9	57.5	34.3	107.5	87.5	11.9	13.0
28.0	18.9	32.7	58.0	34.1	106.3	88.0	11.9	12.9
28.5	17.0	26.3	58.5	33.9	104.9	88.5	11.8	12.8
29.0	15.0	20.6	59.0	33.6	103.5	89.0	11.7	12.6
29.5	13.1	15.7	59.5	33.4	101.8	89.5	11.7	12.5

E-5 W259CK Mod. 247D +40 112.8 F(50-10) dBu Tabulation Within WBVR(FM) 244C2

W259CK Glasgow, KY, Showing Protection to WBVR-FM
 Geographic Coordinates: N. 36 57 34.00 W. 86 00 08.00
 74.1204(d) Study - Using NGDC 30 SEC Terrain Database
 Translator or LPFM Maximum Licensed ERP = 0.25
 Translator or LPFM Antenna Height AG = 116 Meters
 W259CK Antenna Model = NICOM BKG77-2-05

Protected Station's Contour = 72.75936 dBu
 Translator's or LPFM's full Interference contour 112.75936

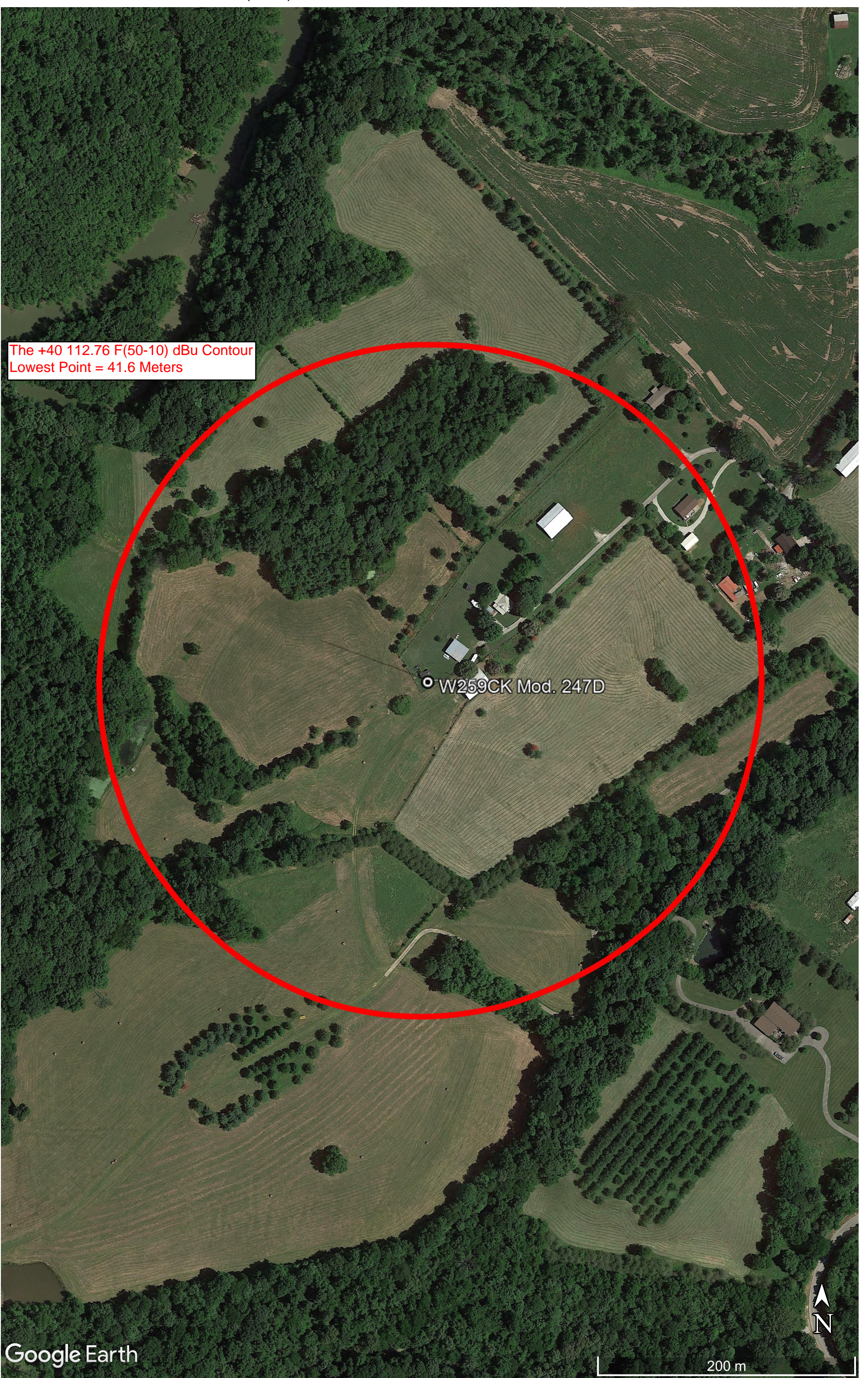
Review Azimuth = 0 Degrees True
 Horizontal Relative Field at Review Azimuth = 1.000
 Translator/LPFM ERP on the horizontal at Review Azimuth = 0.25 kW
 Distance between stations = 26.2 km
 Protected Station= WBVR-FM, 45 kW, 317 M Meters COR AMSL

Depression Angle From Degree(Deg)	Vertical Relative Field	Horizontal Relative Field	ERP (kw)	Dist to IX Contour Along Dep. Angle (m)	Dist to IX Contour From Tower Base (m)	Height IX Above Ground (m) (1)
00.00	1.0	1.0	0.2500	255.2713	255.2713	116.000
01.00	0.999	1.0	0.2495	255.0160	254.9772	111.549
02.00	0.998	1.0	0.2490	254.7608	254.6056	107.109
03.00	0.995	1.0	0.2475	253.9950	253.6469	102.707
04.00	0.992	1.0	0.2460	253.2291	252.6123	098.336
05.00	0.988	1.0	0.2440	252.2080	251.2483	094.019
06.00	0.982	1.0	0.2411	250.6764	249.3032	089.797
07.00	0.976	1.0	0.2381	249.1448	247.2877	085.637
08.00	0.969	1.0	0.2347	247.3579	244.9506	081.574
09.00	0.961	1.0	0.2309	245.3157	242.2955	077.624
10.00	0.952	1.0	0.2266	243.0183	239.3263	073.800
11.00	0.939	1.0	0.2204	239.6998	235.2958	070.263
12.00	0.925	1.0	0.2139	236.1260	230.9660	066.907
13.00	0.911	1.0	0.2075	232.5522	226.5919	063.687
14.00	0.896	1.0	0.2007	228.7231	221.9290	060.667
15.00	0.881	1.0	0.1940	224.8940	217.2309	057.793
16.00	0.864	1.0	0.1866	220.5544	212.0105	055.207
17.00	0.846	1.0	0.1789	215.9595	206.5231	052.860
18.00	0.828	1.0	0.1714	211.3646	201.0197	050.685
19.00	0.81	1.0	0.1640	206.7698	195.5046	048.682
20.00	0.791	1.0	0.1564	201.9196	189.7424	046.939
21.00	0.771	1.0	0.1486	196.8142	183.7419	045.468
22.00	0.75	1.0	0.1406	191.4535	177.5126	044.280
23.00	0.728	1.0	0.1325	185.8375	171.0643	043.388
24.00	0.707	1.0	0.1250	180.4768	164.8738	042.593
25.00	0.686	1.0	0.1176	175.1161	158.7091	041.993
26.00	0.664	1.0	0.1102	169.5001	152.3457	041.696
27.00	0.642	1.0	0.1030	163.8842	146.0219	041.598 (1)
28.00	0.62	1.0	0.0961	158.2682	139.7425	041.698
29.00	0.598	1.0	0.0894	152.6522	133.5127	041.993
30.00	0.577	1.0	0.0832	147.2916	127.5582	042.354
31.00	0.553	1.0	0.0765	141.1650	121.0020	043.295
32.00	0.53	1.0	0.0702	135.2938	114.7356	044.305
33.00	0.508	1.0	0.0645	129.6778	108.7570	045.372
34.00	0.485	1.0	0.0588	123.8066	102.6403	046.768
35.00	0.463	1.0	0.0536	118.1906	096.8161	048.209
36.00	0.44	1.0	0.0484	112.3194	090.8683	049.980
37.00	0.418	1.0	0.0437	106.7034	085.2171	051.784
38.00	0.396	1.0	0.0392	101.0874	079.6580	053.764
39.00	0.375	1.0	0.0352	095.7267	074.3936	055.757
40.00	0.354	1.0	0.0313	090.3660	069.2244	057.914
41.00	0.333	1.0	0.0277	085.0053	064.1543	060.231
42.00	0.313	1.0	0.0245	079.8999	059.3772	062.537
43.00	0.293	1.0	0.0215	074.7945	054.7012	064.990
44.00	0.274	1.0	0.0188	069.9443	050.3137	067.413
45.00	0.256	1.0	0.0164	065.3495	046.2090	069.791
46.00	0.238	1.0	0.0142	060.7546	042.2037	072.297
47.00	0.221	1.0	0.0122	056.4150	038.4749	074.741
48.00	0.205	1.0	0.0105	052.3306	035.0160	077.111
49.00	0.189	1.0	0.0089	048.2463	031.6524	079.588
50.00	0.174	1.0	0.0076	044.4172	028.5508	081.974
51.00	0.16	1.0	0.0064	040.8434	025.7036	084.259
52.00	0.146	1.0	0.0053	037.2696	022.9455	086.631
53.00	0.133	1.0	0.0044	033.9511	020.4323	088.885
54.00	0.121	1.0	0.0037	030.8878	018.1554	091.011
55.00	0.11	1.0	0.0030	028.0798	016.1059	092.998
56.00	0.099	1.0	0.0025	025.2719	014.1318	095.049
57.00	0.088	1.0	0.0019	022.4639	012.2347	097.160
58.00	0.079	1.0	0.0016	020.1664	010.6866	098.898
59.00	0.07	1.0	0.0012	017.8690	009.2032	100.683
60.00	0.061	1.0	0.0009	015.5715	007.7858	102.515
61.00	0.053	1.0	0.0007	013.5294	006.5592	104.167
62.00	0.046	1.0	0.0005	011.7425	005.5128	105.632
63.00	0.039	1.0	0.0004	009.9556	004.5197	107.130
64.00	0.033	1.0	0.0003	008.4240	003.6928	108.429

E-5 W259CK Mod. 247D +40 112.8 F(50-10) dBu Tabulation Within WBVR(FM) 244C2, cont.

Depression Angle From Degree (Deg)	Vertical Relative Field	Horizontal Relative Field	ERP (kw)	Dist to IX Contour Along Dep. Angle (m)	Dist to IX Contour From Tower Base (m)	Height IX Above Ground (m)
65.00	0.028	1.0	0.0002	007.1476	003.0207	109.522
66.00	0.023	1.0	0.0001	005.8712	002.3880	110.636
67.00	0.018	1.0	0.0001	004.5949	001.7954	111.770
68.00	0.014	1.0	0.0000	003.5738	001.3388	112.686
69.00	0.01	1.0	0.0000	002.5527	000.9148	113.617
70.00	0.007	1.0	0.0000	001.7869	000.6112	114.321
71.00	0.004	1.0	0.0000	001.0211	000.3324	115.035
72.00	0.002	1.0	0.0000	000.5105	000.1578	115.514
73.00	0.0	1.0	0.0000	000.0255	000.0075	115.976
74.00	0.002	1.0	0.0000	000.5105	000.1407	115.509
75.00	0.004	1.0	0.0000	001.0211	000.2643	115.014
76.00	0.005	1.0	0.0000	001.2764	000.3088	114.762
77.00	0.006	1.0	0.0000	001.5316	000.3445	114.508
78.00	0.007	1.0	0.0000	001.7869	000.3715	114.252
79.00	0.008	1.0	0.0000	001.9145	000.3653	114.121
80.00	0.008	1.0	0.0000	002.0422	000.3546	113.989
81.00	0.008	1.0	0.0000	002.0422	000.3195	113.983
82.00	0.008	1.0	0.0000	002.0422	000.2842	113.978
83.00	0.008	1.0	0.0000	002.0422	000.2489	113.973
84.00	0.009	1.0	0.0000	002.2974	000.2401	113.715
85.00	0.008	1.0	0.0000	002.0422	000.1780	113.966
86.00	0.009	1.0	0.0000	002.2974	000.1603	113.708
87.00	0.009	1.0	0.0000	002.2974	000.1202	113.706
88.00	0.009	1.0	0.0000	002.2974	000.0802	113.704
89.00	0.009	1.0	0.0000	002.2974	000.0401	113.703
90.00	0.009	1.0	0.0000	002.2974	000.0000	113.703

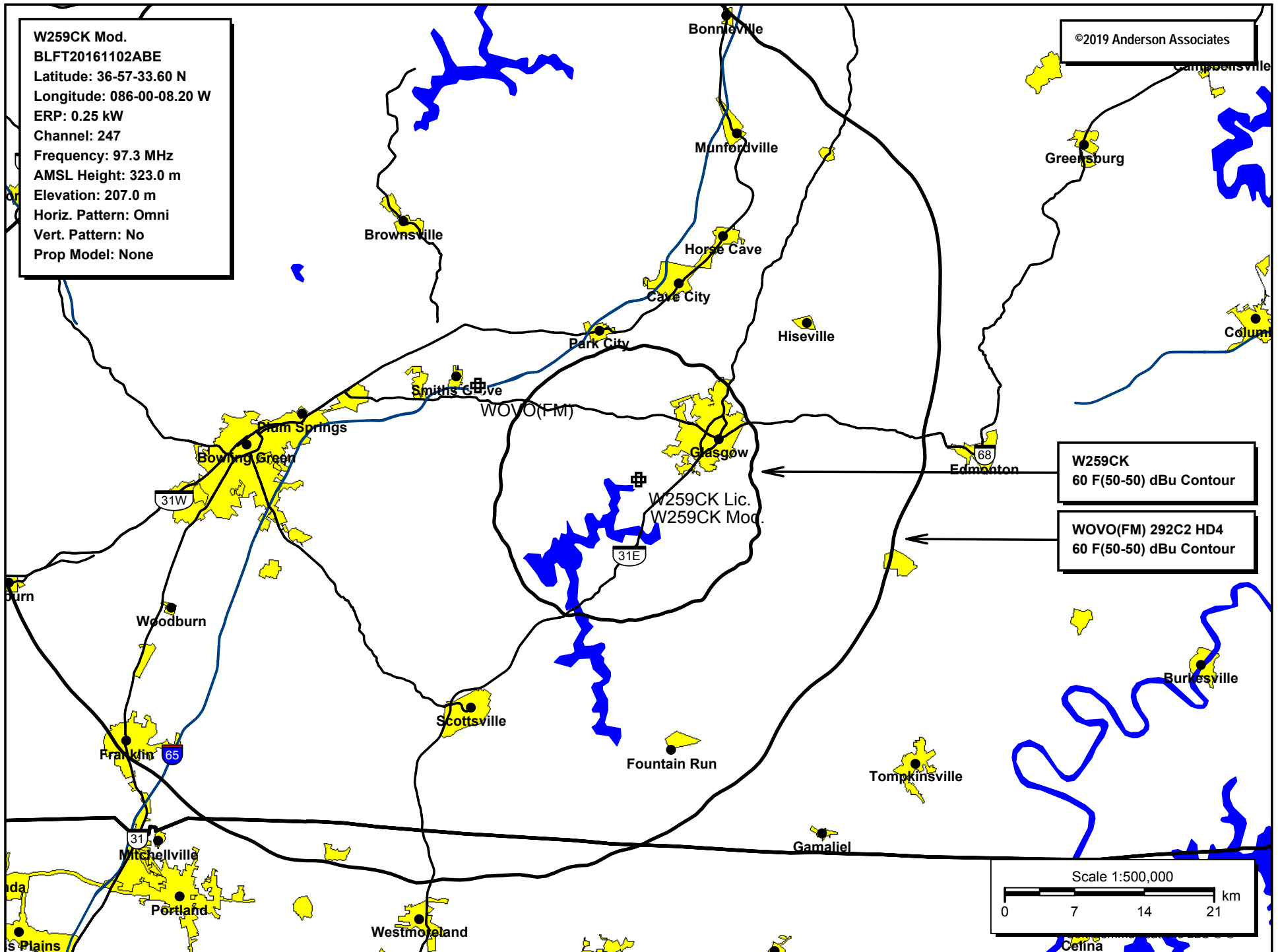
(1) The +40 112.76 F(50-10) dBu contour lowest point within the third adjacent WBVR-FM 244C2 protected contour lowest point above the site elevation = 41.6 meters.



The +40 112.76 F(50-10) dBu Contour
Lowest Point = 41.6 Meters

W259CK Mod. 247D

E-7 W259CH Mod. 247D 60 dBu Contour Plot



Antenna Height Above Average Terrain Calculations -- Results

Input Data

Latitude **36° 57' 34"** North
Longitude **86° 0' 8"** West (NAD 27)

These coordinates convert to NAD 83 coordinates of
36° 57' 34.18", North, 86° 00' 07.93" West (NAD 83).

Height of antenna radiation center above mean sea level: **323** meters AMSL

Number of Evenly Spaced Radials = **12** 0° is referenced to True North

Results

Calculated HAAT = **110 meters**

Antenna Height Above Average Terrain calculated
using 1 km [GLOBE terrain data](#)

Individual "Radial HAAT" Values, in meters

0°	107.5 m
30°	105.6 m
60°	94.0 m
90°	75.9 m
120°	101.3 m
150°	109.1 m
180°	119.7 m
210°	141.9 m
240°	133.1 m
270°	116.1 m
300°	114.1 m
330°	107.2 m

ASR Registration 1063307

Registration Detail

Reg Number	1063307	Status	Constructed
File Number	A0553342	Constructed	01/01/1992
EMI	No	Dismantled	
NEPA	No		

Antenna Structure

Structure Type TOWER - Free standing or Guyed Structure used for Commu

Location (in NAD83 Coordinates)

Lat/Long	36-57-34.0 N 086-00-08.0 W	Address	440 PINE RIDGE ROAD
City, State	GLASGOW , KY		
Zip	42141	County	BARREN
Center of AM Array		Position of Tower in Array	

Heights (meters)

Elevation of Site Above Mean Sea Level	Overall Height Above Ground (AGL)
207.3	147.0
Overall Height Above Mean Sea Level	Overall Height Above Ground w/o Appurtenances
354.3	147.0

Painting and Lighting Specifications

FAA Chapters 3, 4, 5, 13

Paint and Light in Accordance with FAA Circular Number 70/7460-1H

FAA Notification

FAA Study	91-ASO-1601-OE	FAA Issue Date	03/11/1992
-----------	----------------	----------------	------------

Owner & Contact Information

FRN	0001790963	Owner Entity Type	
-----	------------	-------------------	--

Owner

NEWBERRY BROADCASTING, INC.
Attention To: J. Barry Williams
P.O. Box 1505
Glasgow , KY 42142-1505

P: (270)843-4222
F:
E: barry@commsysky.com

Contact

Garziglia , John F Esq
1401 I Street, NW, 7th Floor
Washington , DC 20005-2225

P: (202)857-4455
F:
E: jgarziglia@wcsr.com

Last Action Status

Status	Constructed	Received	07/03/2007
Purpose	Notification	Entered	07/03/2007
Mode	Interactive		