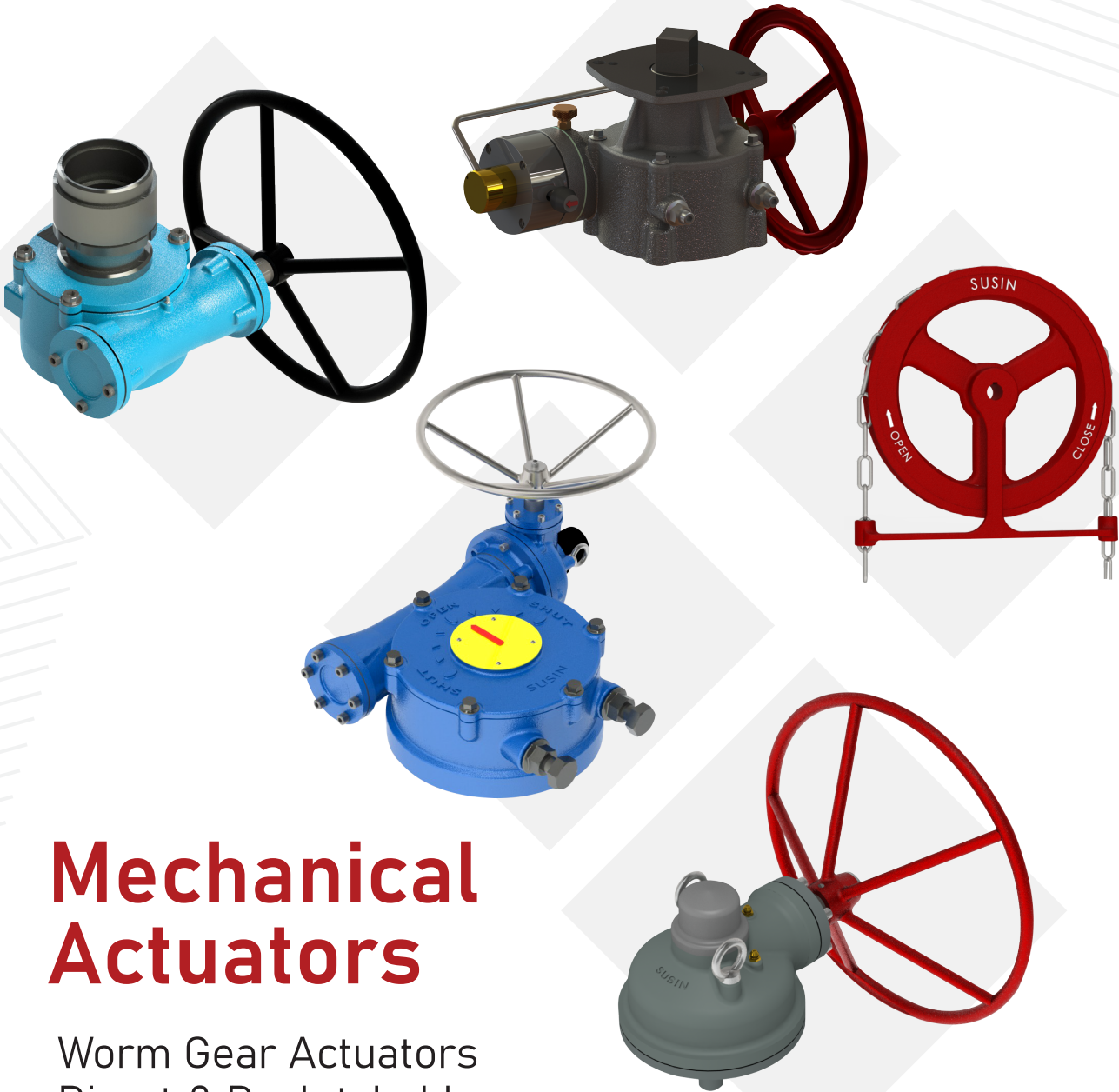




SUSIN I-TORK INDIA PRIVATE LIMITED

An ISO 9001 -2015 Certified Company



Mechanical Actuators

Worm Gear Actuators
Direct & Declutchable
Bevel Gear Actuators



Scan QR Code
to download E-Catalogue

www.susinma.com

About

SUSIN I-TORK INDIA PRIVATE LIMITED

Susin Group was founded by Mr. Muthukumar in 1992, as a company specialized in the design, manufacture and installation of Valve Automation Products to Different Industries. We entered the manufacturing market in 2006 and began concentrating more on the industrial demands for valve automation.

We are providing Complete Automation Solution to All kind of Valve Industries where we equipped to Support in Pneumatic, Hydraulic, Electrical & Mechanical Actuators. Susin Produces various range of Critical Products in different Applications

Our Global Partners

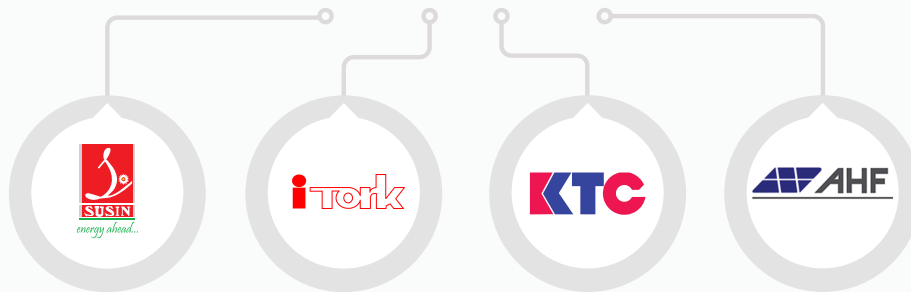
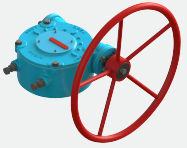
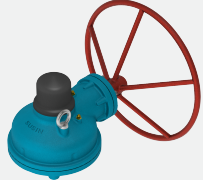

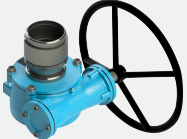




Table Of Content

Worm Gear Actuators	Page No	Worm Gear Actuators	Page No
 MAW Series (Mechanical Actuators For Rotary Applications)	03	 MAB Series (Declutch Mechanical Actuators for Linear Applications)	09
 ITG Series (Declutch Mechanical Actuators for Rotary Applications)	05	Worm Gear Actuators	Page No
 MTG Series (Declutch Mechanical Actuators for Linear Applications)	07	 Hand Wheel Series	10
		Regulus	Page No
		 Regulus BMS Business Management System	11

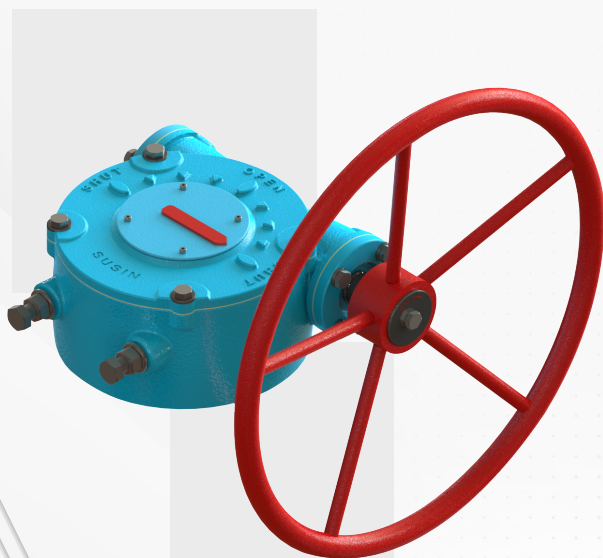
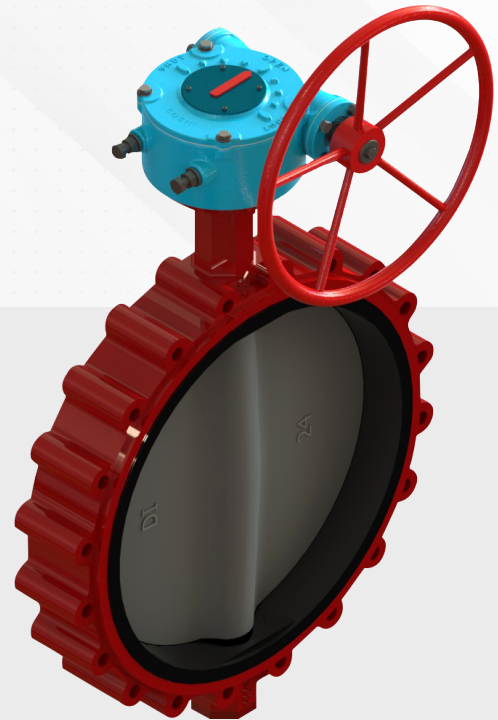
Worm Gear Actuators

MAW Series

MAW Series Gear Box is rocky with robust design, industrial grade products, manufactured with Cast Iron Housing and Components. These series of gear have easy operating and reliable Surface finish Coatings.

Applications

- MAW Series Gear Boxes are suitable for all rotary types of valves like Ball Valve, Butterfly Valves and Plug Valves and Dampers. Also, it is highly suitable for all general-Purpose Industries as well as Chemical, Power, HVAC, and Water works industries.
- Hand wheels are available in a variety of sizes for Smooth and Easy Operation.
- Several Options such as Limit Switch, Electrical Motor can be Easily Mounted on site without any machining due to integration of all necessary incorporated with housing.

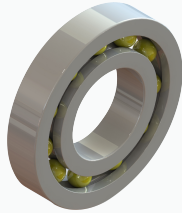


Features

- 9 Models Up to 18,000 Nm Torque Range
- $\pm 5^\circ$ Stroke Adjustment
- IP-67 Rating Protection
- -20°C to $+85^\circ\text{C}$ Temperature Range
- Ductile Iron Housing
- Steel Input Shaft (Stainless Steel Optional)
- Ball Bearing Construction
- PU Coating for Housing and Powder Coated Hand wheel

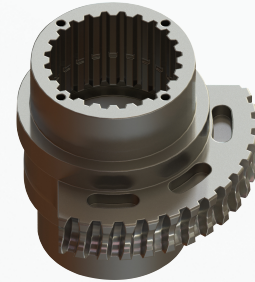
Special Features of Susin Gear Actuators

MAW Series



High Performance Bearing

We use Bearing to make the Smooth Operation to Handwheel Shaft & easy to operate the gear Actuator.



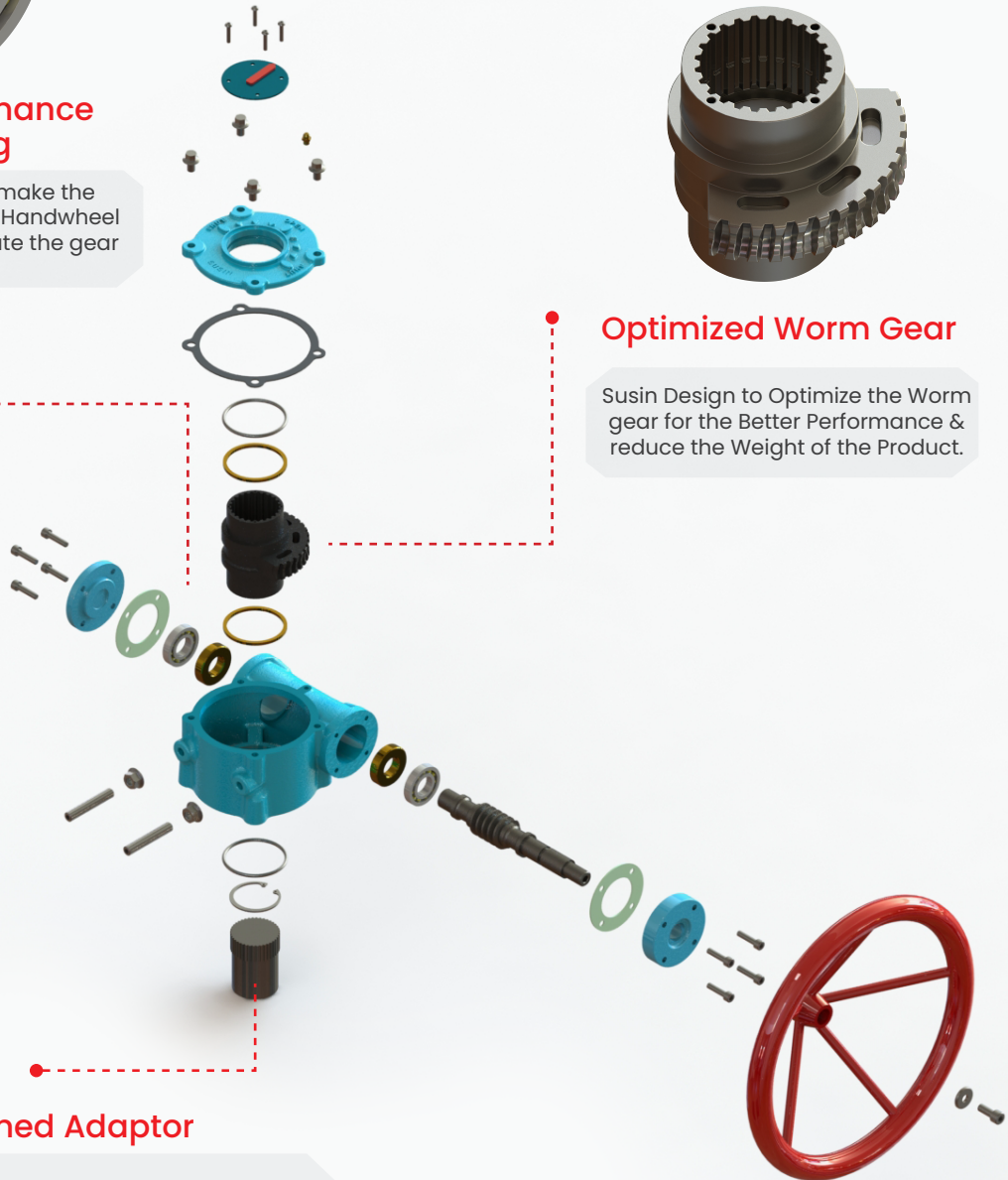
Optimized Worm Gear

Susin Design to Optimize the Worm gear for the Better Performance & reduce the Weight of the Product.



Splined Adaptor

We Provide Splined Drive Output Adaptor to connect/suit the Valve Stem with required Valve Shaft design. Spline adaptor provide accurate position & equally Distributed load transmission to gear & Valve Shaft



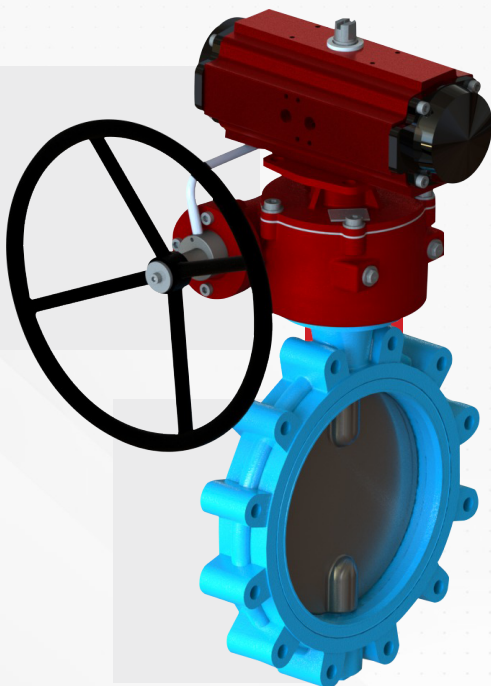
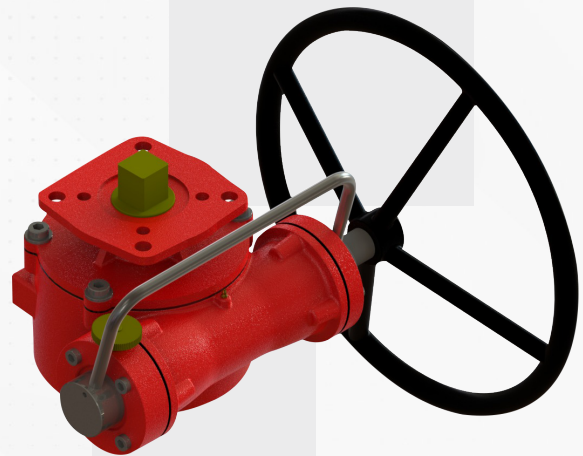
Worm Gear Actuators

ITG Series

ITG series are rugged, industrial grade manual overrides, manufactured with Ductile Casting housings. All models in this series feature high performance gearings and a superior painted finish.

Applications

- ITG series is designed to provide a manual operation of 90° for shut-off valves & dampers which are equipped with pneumatic rotary actuators.
- ITG series provides a declutch able design for use in all industries where a reliable operation of both double acting and spring return pneumatic actuators is required. All units which are to be mounted between the valve and actuator are supplied with actuator mounting flange for flexible usage.
- Furthermore, all units can be supplied with plain machinable drive shaft which is connecting the actuator with the valve.



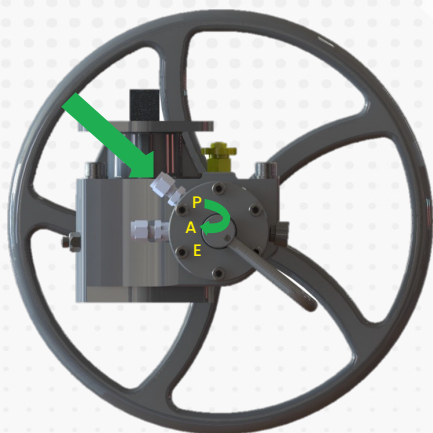
Features

- Compact Ductile Casting Housing body and Moulding Structure.
- Hardened Worm gears & Surface treated internal components.
- Integrated Air Relief System.
- Lever Locking Mechanism for Automatic and Manual.
- A One-Piece Drive Shaft for PLY reduction.
- Adequate Coating for Marine Working Environment with customized colours.
- Proficiency for Addon Attachment like Proximity Sensors.
- Easy Repair and Service
- IP-67 Protection.
- Declutch able handwheel.
- Mounting flanges conforming to ISO5211 .
- Easy Adjustable Mechanical Stoppers to Control the Limits of Opening/ Closing.
- Detachable drive bush to suit the Valve Size Connection.

Air Relief Valve System

The Purpose of this Specially Designed ARV Series to exhaust the Excess Instrument Air from the Pneumatic Actuators to operate the Gear Operators easily.

ARV Series having two functional Mode- "Auto Mode" & "Manual Mode"



Auto Mode

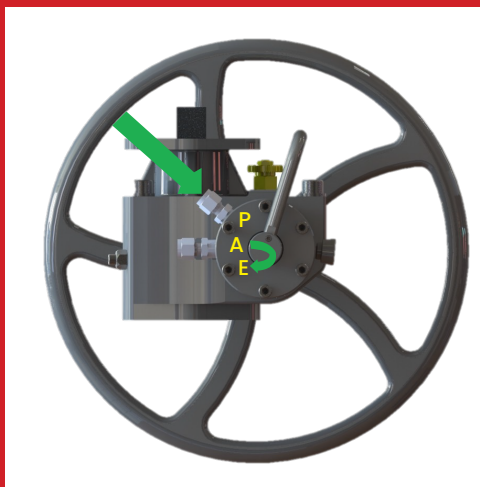
- ⚙️ P – Input Air Port
- ⚙️ A – Solenoid Air Port
- ⚙️ E – Released Air Port (Muffler can be connected)
- ⚙️ In Auto Mode Actuators works from
- ⚙️ The air from 'A' the Sliding Pin Locked in Auto mode.
- ⚙️ There is no air flow in the 'E' Exhaust

Auto Mode Functionality

When it is in Auto mode then Pneumatic Actuator drives the Valve Stem through Gear Operator without loading the Gear Actuators. Instrument Air from Compressor will pass into Port "P" to Port "A" where the Air travels from compressor to Solenoid Valve Port Then Enters into the Actuator System to perform the valve Functions.

Manual Mode

- ⚙️ P – Input Air Port
- ⚙️ A – Solenoid Air Port
- ⚙️ E – Released Air Port (Muffler can be connected)
- ⚙️ In Manual Mode A – E Route release
- ⚙️ The air within the actuator
- ⚙️ There is no air flow in the 'A' Solenoid Air Port



Manual Mode Functionality

When it is in Manual mode then Manual override drives the Valve Stem through Gear Operator Handwheel. Instrument Air Inside the Actuator will pass into Port "A" to Port "E"– Exhaust Valve Port where the Air travels from Solenoid Valve Port to Exhaust valve Port "E" to vent the Instrument Air from the Actuator System to perform the valve Functions with Manual Override

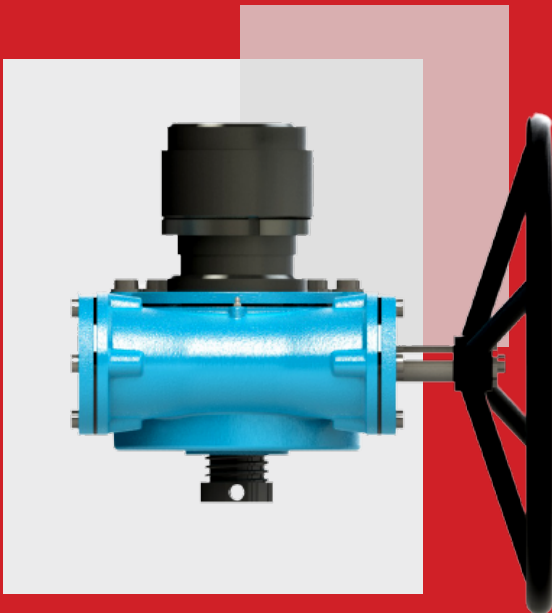
Worm Gear Actuators

MTG - Multi turn Gear Actuator Series

ITG series are rugged, industrial grade manual overrides, manufactured with Ductile Casting housings. All models in this series feature high performance gearings and a superior painted finish.

Applications

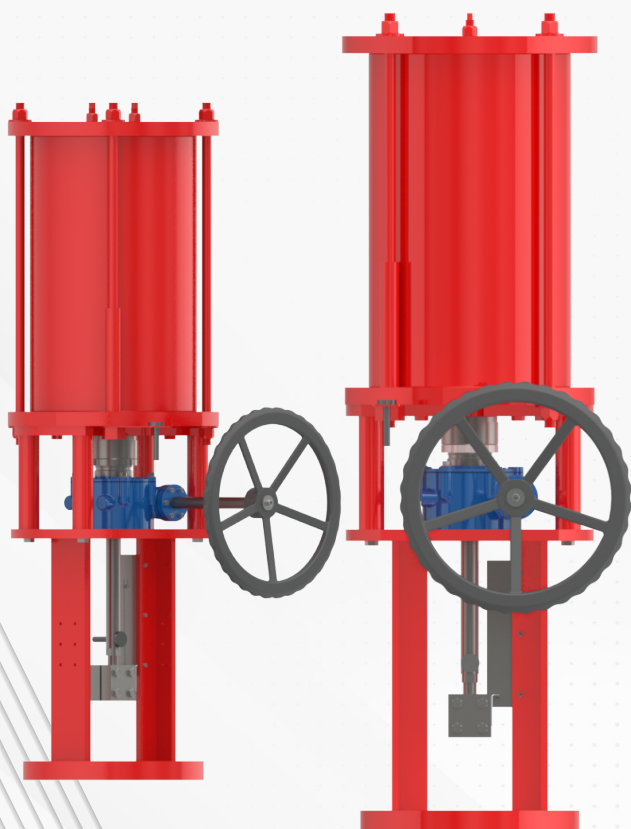
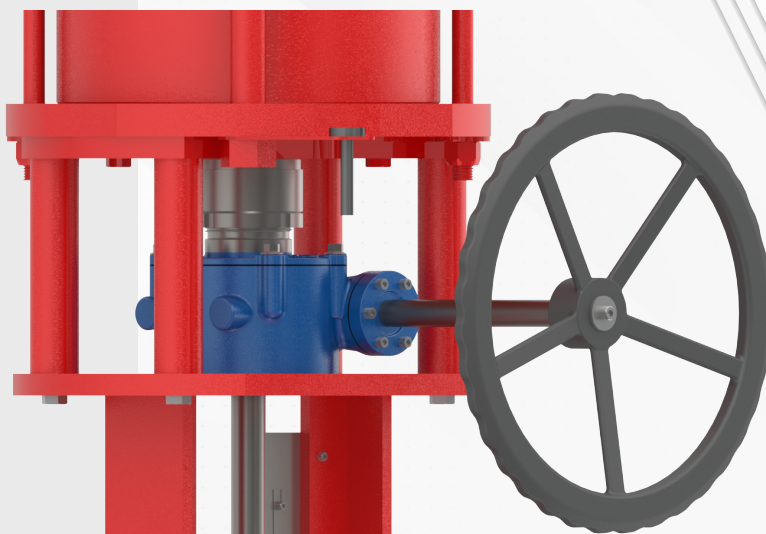
- ❁ MTG SERIES ACTUATORS designed for MTG Manual Override Side Mounted Assembly for the Linear Cylinder Gate/Globe Valve Applications. During Failure of Main Sources of any Actuators, we can use our MTG Series to Operate the Gate /Globe Valve for the Emergency or any Specific conditions.
- ❁ Our MTG SERIES ACTUATORS has Unique Design features to Provide Higher Efficiency Outputs through Worm Gear Constructions. This leads to reduce the Efforts to Operate the Valves Efficiently.
- ❁ Our MTG SERIES ACTUATORS has Unique Design features to Provide Higher Efficiency Outputs through Worm Gear Constructions. This leads to reduce the Efforts to Operate the Valves Efficiently.



Features

- ❁ Ductile Casting Iron for both Housing & Cover.
- ❁ Lever Locking Mechanism for Auto and manual.
- ❁ Epoxy primer coated housing and cover. Special Lubricants used.
- ❁ Roller Bearing equipped for Smooth Operations.
- ❁ Used for high stroke length.
- ❁ Manual engagement & disengagement at any position.
- ❁ Self-locking.
- ❁ Extended support for high length hand wheel.
- ❁ Hardened worm and worm gear
- ❁ Ease to Operate through Comfort Hand-wheels.
- ❁ IP-67 Protection.
- ❁ Support with Self- Lubricating Bushes for Worm.
- ❁ High Thrust Bearings used to withstand Load.

**MTG
Series Actuators
Installed on Susin
PLDS Series Linear
Cylinders**



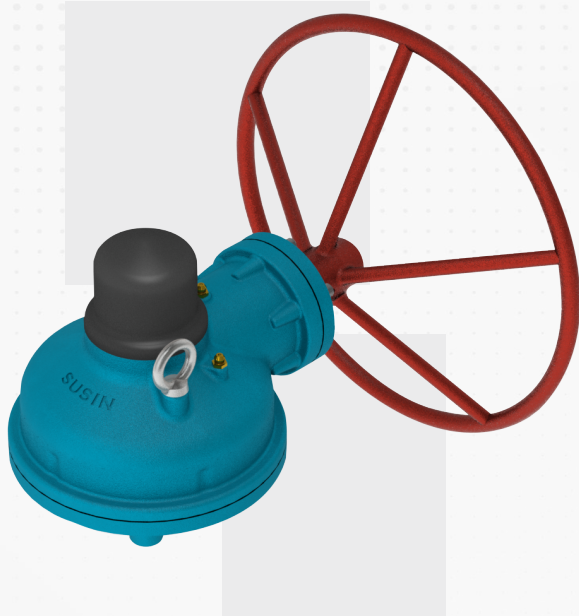
**MTG
Manual Override
Side Mounted Assembly
for the Linear Cylinder
Valve Applications.**

MAB Series

Bevel gears are gears where the axes of the two shafts intersect and the tooth-bearing faces of the gears themselves are conically shaped.

A bevel gear is used to transfer mechanical energy or shaft power between shafts that intersecting, either perpendicular or at an angle

We focus to build our MAB (Mechanical Actuator Bevel Series) to meet the requirement for the specify industries like Oil & Gas, Power, Water, General, Wind, Steel and et

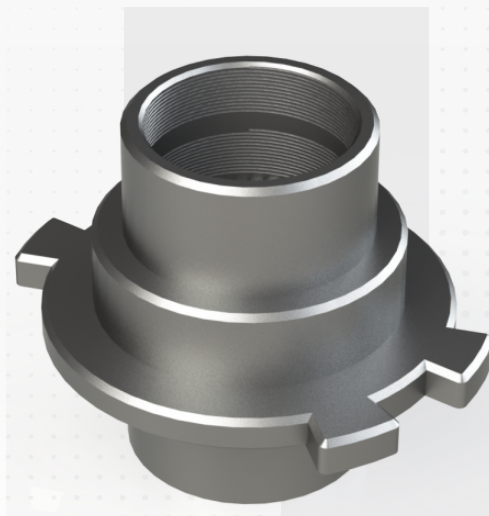


Applications

- Ductile casting housings & covers
- With stem nut as screw jack
- Rating IP- 67 protection
- High & low temperature version
- Suitable for ambient temperature -40°C to 80°C
- High performance bearings
- Widely used on the Gate & Globe valves
- Top quality corrosion protection with powder coating

Drive Sleeve

- Easily replaceable splined stem bush has been permitted inside the drive sleeve.
- Dual locknuts has been permitted to arrest the movement of the stem bush.
- Highly strengthen brass material has used for the stem bush



Casting Wheel

Handwheels are manually - operated devices that revolve around an axis. Handwheels typically perform one of two operational tasks.

They enable movement and precise adjustment to machinery or carefully open and close a valve.

Features

- Fine grain cast irons.
- All cast iron wheels have multiple spokes and grips. Available with or without handle.
- Multiple colours of Epoxy Finish available upon request



Fabricated Wheel

Handwheels typically perform one of two operational tasks. They enable movement and precise adjustment to machinery or carefully open and close a valve.

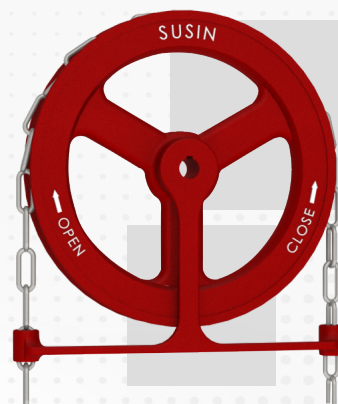


Features

- 200mm to 710mm range of diameter
- Stainless steel or powder coated.
Keyed, Pinned or Squared drive
- Optional open and close indication marking, locking plate, rotating handles.
- Multiple colours of Epoxy Finish available upon request

Chain Wheel

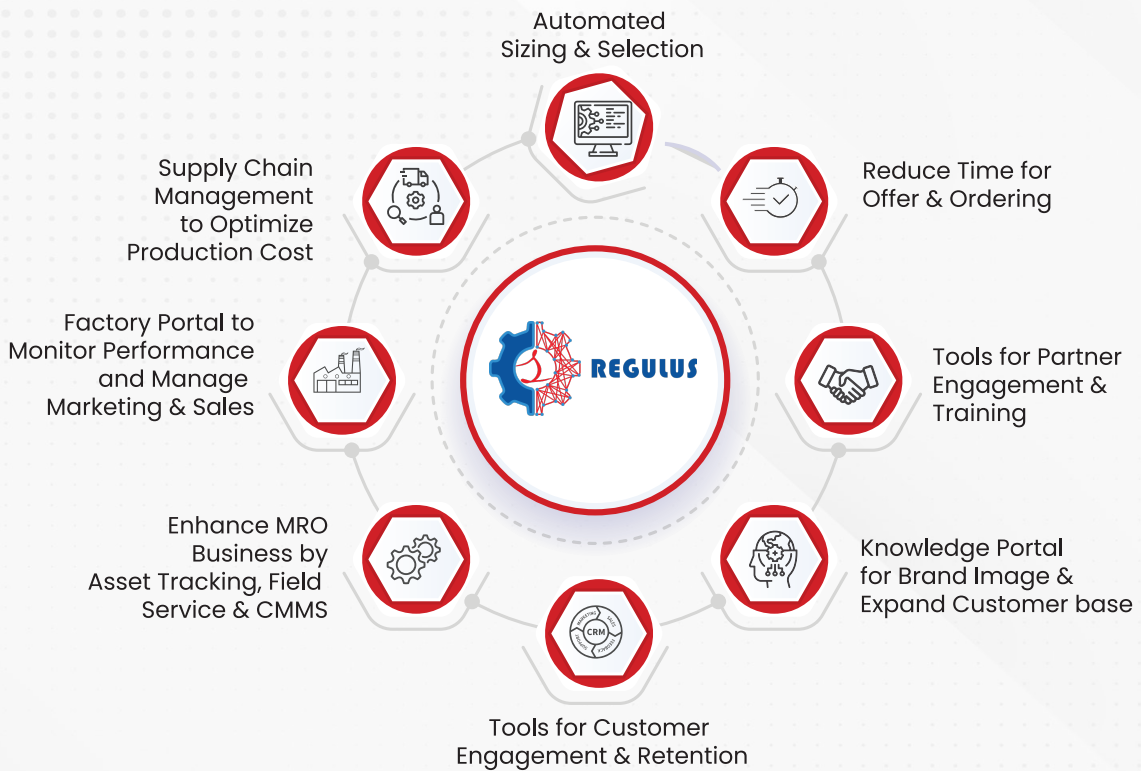
Chain Wheel can be used by mounted directly on the valve to be freely rotated using the chain wheel with the smooth chain link. The valve may locate overhead of the floor can be operated by using the chain which was freely hanging at length below nearer to human. This smooth chain link available with stainless steel material to avoid rust formation.



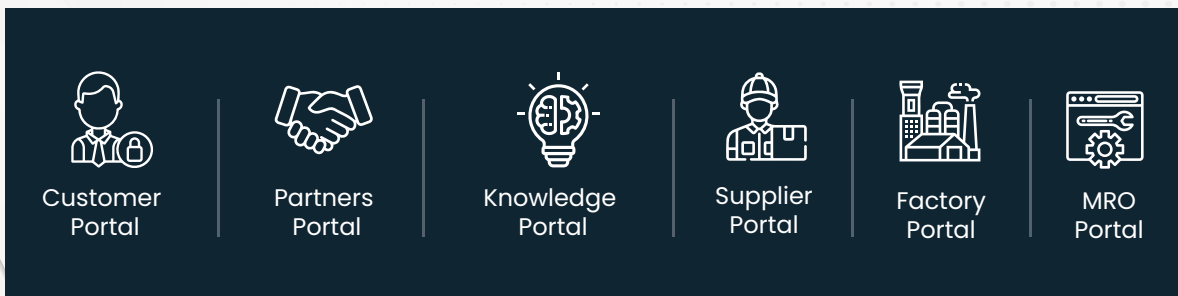
Business Management **System**

The objective of Regulus Business Management System (BMS) is to automate the business processes in marketing, Sales, Manufacturing, Supply, Service and Customer Relationship management.

“Pains and Challenges Regulus BMS to Solve”



Regulus **BMS**



Other Products



Hydraulic Actuators
(Rotary & Linear types)



Electrical Actuators



Pneumatic Actuators
(Rotary & Linear types)

Susin Group Global Presence



Scan QR Code
to download E-Catalogue

INDIA

SUSIN I-TORK INDIA PRIVATE LIMITED
43A9 , Vadakku Thottam, Idigarai,
Coimbatore, Tamilnadu, India - 641022
E-mail : techsales@susinitork.in
Website : www.susinma.com
Tel : +91 6384063034

KOREA

I-TORK CONTROLS LTD
74-6 , Chunui-Dong, Wonmi-Gu, Bucheon Si,
Gyeonggi-Do, South Korea, Zip : 420-120
Tel : +82-2-855-1365
Fax : +82-2-855-1367
E-mail : we123@itork.com
Website : www.i-tork.com

SINGAPORE

AHF INDUSTRIES - HEAD OFFICE
2 , Kallang Pudding #07-12, #06-05/06,
Mac Tech Building Singapore, 349307
Tel : +65 6748 8108
Fax 1 : +65 6842 5567
Fax 2 : +65 6748 8917

QATAR

SUSIN QATAR TRADING WILL
P.O Box - 220 , Office#15, 1st floor,
Al Zaman Building, Ali Bin Abi
Talib Street, Doha, Qatar,
Tel : 974 44877458

MALAYSIA

AHF ENGINEERING Sdn. Bhd.
No 5 , Jalan USJ 1/31, Taman Subang Permai,
47600 Subang Jaya Selangor, Malaysia
Tel : +603-8024-0940
E-mail : cky@ahfengineering.com
sales@ahfengineering.com

UNITED ARAB EMIRATES

SUSIN I-TORK ME FZC
Y61 , Executive Suite
Post Box No - 122643, Saif Zone Sharjah
United Arab Emirates
Tel : 971 529407969
Fax : +65 6748 8917