

# Electro Hydraulic Actuator

Double acting - LP-HD

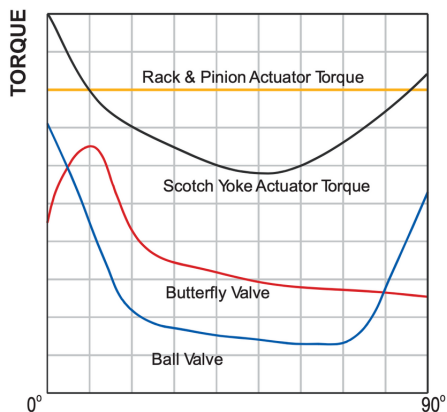
Single acting - LP-HS



LP-HD & LP-HS Range



# Product Description



## Advantage (Scotch Yoke)

The SUSIN I - TORK actuators provide increased torque at the open and close position, this closely matches the required torque for practical valve operation

- Increased torque at the open and close position.
- Compact design and size
- Extremely long cyclic life
- Adjustable center stopper for both open & close position.





## Why this range ?

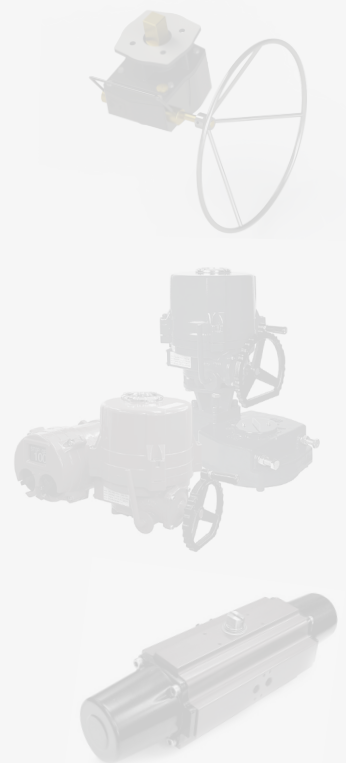
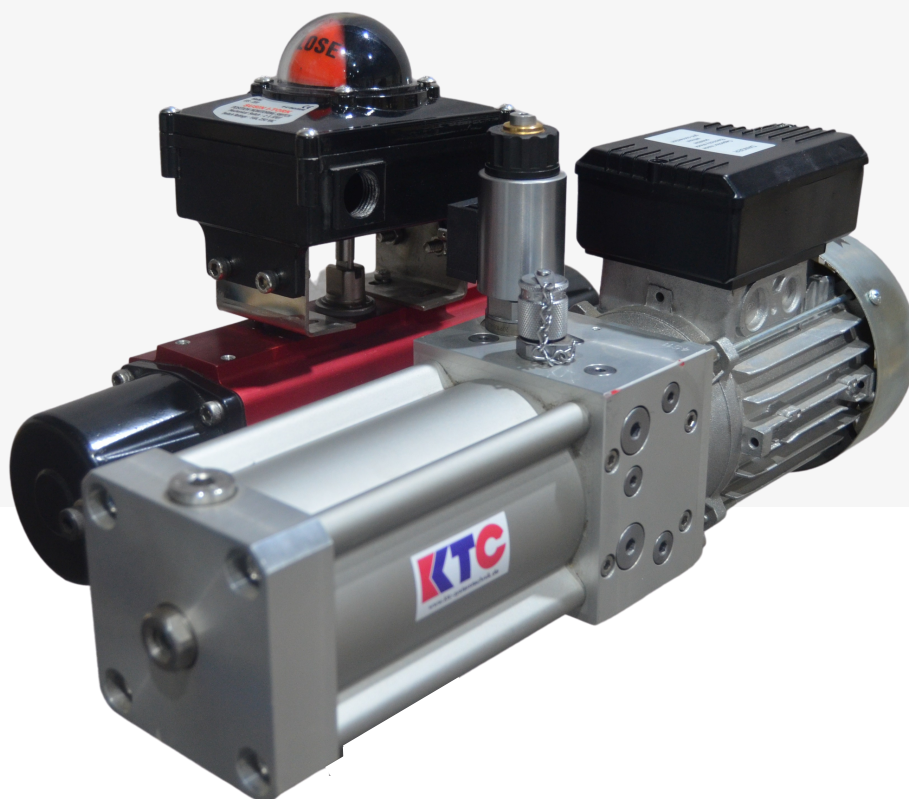
The KTC LP-HS range of actuators offer a unique reliable and with all the features of electrical actuator . best solution for electric fail-safe for both quarter-turn valves and dampers.

### We combine

- Reliable Korean technology on electrical and electronics.
- Proven Scotch yoke technology on actuator
- German technology on precision of hydraulic control.

**Why you need compressor and tubing to control less number of actuator ?**

**When our self contained fail safe Actuators are ready !**

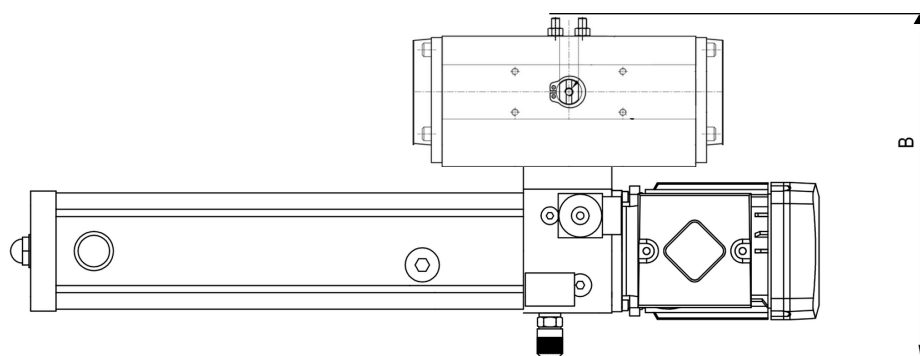
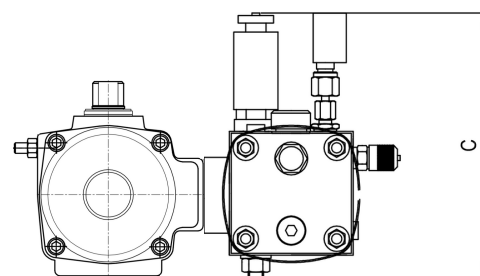
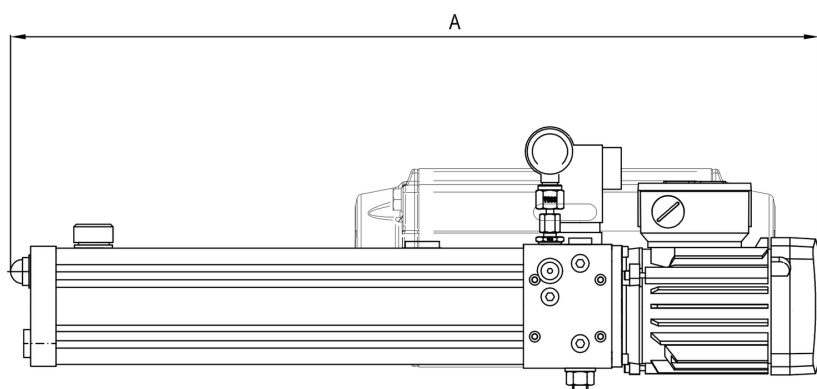
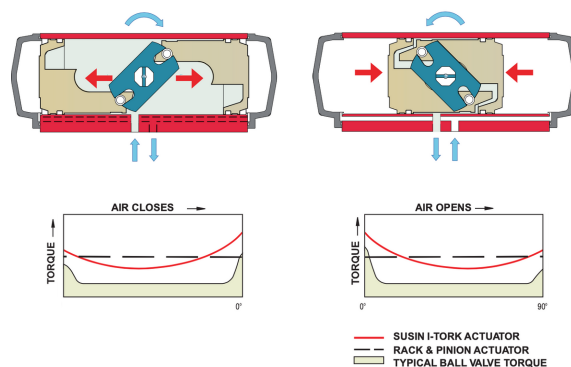


Available in both quarter-turn double acting (30 to 4,600 Nm) and single acting (30 to 3,500 Nm), the actuators are offered with a wide range of operating speeds.



# LP-HD & LP-HS - Technical data

**Motor Voltage** : 400 V 50/60Hz / 230V 50Hz  
**Power consumption** : 180W bis 250W  
**Solenoid Valve** : 24VDC / 230V 50Hz  
**On Board pressure pmax.** : 8,0bar  
**Speed** : adjustable by throttle  
**Medium** : Hydraulic oil HLP, filtered min. 10µm  
**Ambient Temp** : -20°C...50°C  
**Harzadous Areas** : Zone 1 and 2



MODEL	DIMENSION (mm)			Oil (L)	STANDARD	
	A	B	C		Flange ISO 5211	PCD
LPHD & LPHS 45					F03/F05/F07	35/50/70
LPHD & LPHS 50					F03/F05/F07	35/50/70
LPHD & LPHS 55					F05/F07	00/50/70
LPHD & LPHS 70					F05/F07	00/50/70
LPHD & LPHS 75					F07/F10	00/70/102
LPHD & LPHS 85					F05/F07	00/50/70
LPHD & LPHS 100					F07/F10	00/70/102
LPHD & LPHS 125					F10/F12	00/102/125
LPHD & LPHS 160					F10/F14	00/102/140
LPHD & LPHS 200					F12/F16	00/125/165

## Product Selection

### Double Acting LP-HD



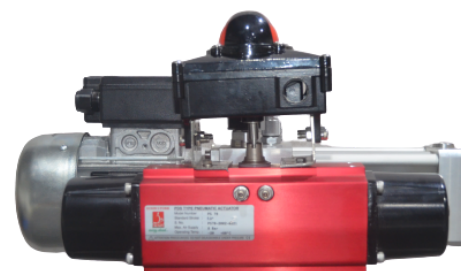
MODEL	ANGLE		
	0°	45°	90°
LPHD 45	38	16	27
LPHD 50	79	33	55
LPHD 55	107	44	75
LPHD 70	217	90	152
LPHD 75	324	134	226
LPHD 85	403	169	282
LPHD 100	653	273	457
LPHD 125	1250	521	876
LPHD 160	2427	1015	1700
LPHD 200	4635	1939	3245

UNIT : N-m

### Single acting Acting LP-HS - NC

MODEL FC	ANGLE					
	0°	55°	90°	90°	35°	0°
LPHS 45	29.3	10.5	14.7	12.3	5.5	8.7
LPHS 50	59.1	21	30	25	12	19.9
LPHS 55	79.8	71.8	42.9	32.1	16.2	27.2
LPHS 70	159.8	55.7	85.3	66.7	34.3	57.2
LPHS 75	243.1	82.8	122.8	103.2	51.2	80.9
LPHS 85	301.1	104.5	154.2	127.8	64.5	101.9
LPHS 100	489.5	168.1	248.3	208.7	104.9	163.5
LPHS 125	940.2	303	475	401	209	309.8
LPHS 160	1847.1	624.8	919.2	780.8	390.2	579.9
LPHS 200	3519.1	1191.6	1736.8	1508.2	747.4	1115.9

UNIT : N-m



### Single acting Acting LP-HS - NO

MODEL FO	ANGLE					
	0°	55°	90°	90°	35°	0°
LPHS 45	20.68	10.9	20.66	6.34	5.1	17.32
LPHS 50	43.3	22	41.1	13.9	11	35.7
LPHS 55	60.43	29.6	55.55	19.45	14.4	46.57
LPHS 70	121.7	59.7	111.9	40.1	30.3	95.3
LPHS 75	176.9	89.85	169.65	56.35	44.15	147.1
LPHS 85	220.5	112.9	210.6	71.4	56.1	182.5
LPHS 100	355	182.1	342.5	114.5	90.9	298
LPHS 125	677.1	338.5	659	217	173.5	572.9
LPHS 160	1311.9	674.4	1281.4	418.6	340.6	1115.1
LPHS 200	2481	1299.7	2463.6	781.4	639.3	2154

UNIT : N-m



# HPU Selection

MODEL NO	Stroking time of Actuator											
	0.02	0.03	0.04	0.05	0.06	0.07	0.08	0.09	2.02	2.04	2.06	2.08
PD 45	14.40	7.20	4.80	3.60	-	-	-	-	-	-	-	-
PD 50	19.20	9.60	6.40	4.80	3.84	-	-	-	-	-	-	-
PD 55	-	20.40	13.60	10.20	8.16	5.83	-	-	-	-	-	-
PD 70	-	-	18.40	13.80	11.04	7.89	6.90	-	-	-	-	-
PD 75	-	-	-	29.70	23.76	16.97	14.85	9.90	-	-	-	-
PD 85	-	-	-	-	19.20	13.71	12.00	8.00	6.00	-	-	-
PD 100	-	-	-	-	-	22.63	19.80	13.20	9.90	5.28	-	-
PD 125	-	-	-	-	-	-	37.35	24.90	18.68	9.96	6.23	-
PD 160	-	-	-	-	-	-	-	45.2	33.9	18.08	11.30	9.04
PD 200	-	-	-	-	-	-	-	-	68.03	36.28	22.68	18.14

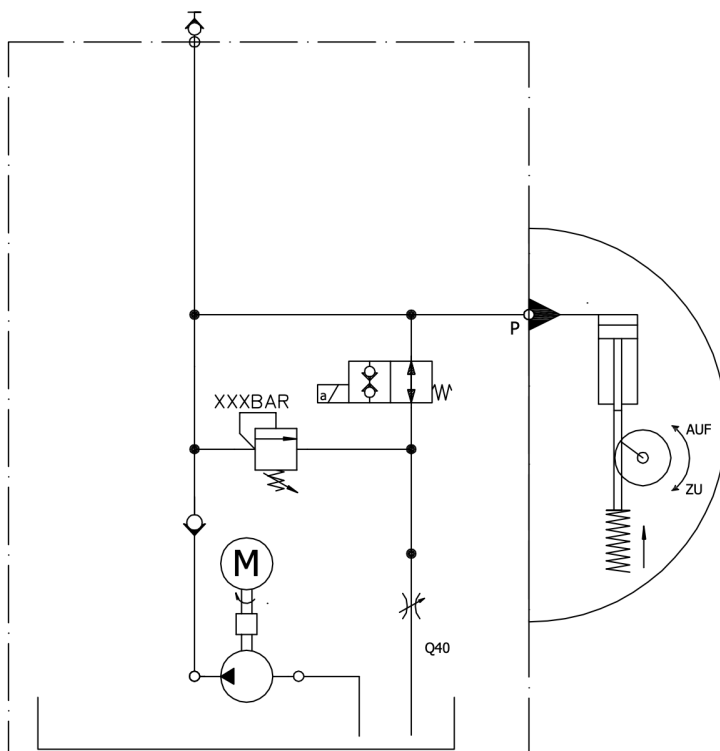
Table data unit - Sec

## Schematic Diagram

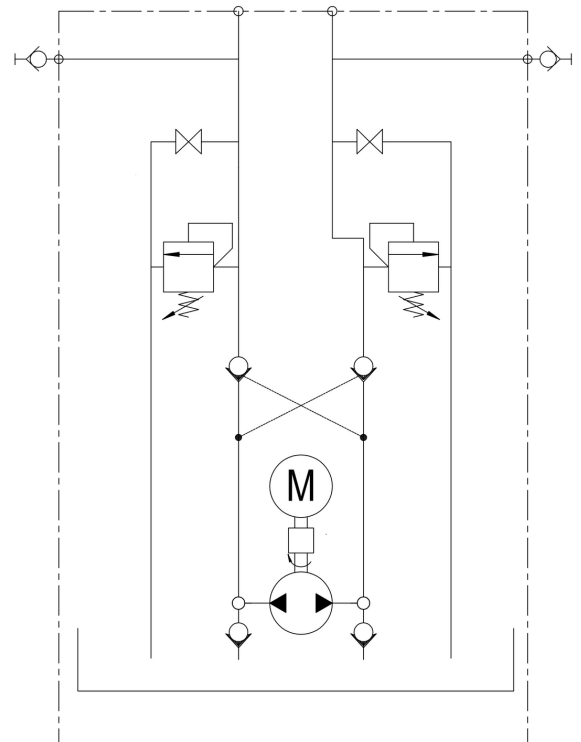
Low pressure hydraulic double acting Range - LP-HD

Low pressure hydraulic single acting Range - LP-HS

### LP-HD

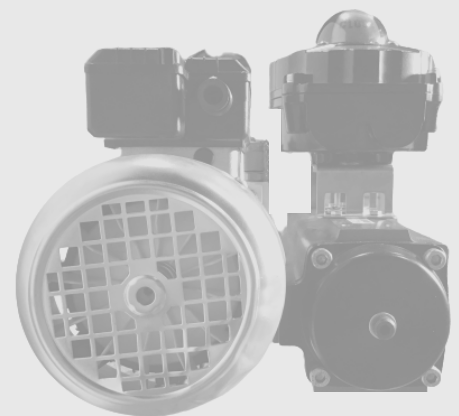


### LP-HS





# Global Presence



## KTC Systemtechnik GmbH

Krähenweg 11  
22459 Hamburg, Germany.  
Phone: +49 40 5714752-0  
Fax: +49 40 5714752-22  
E-mail: [info\(at\)ktc-systemtechnik.de](mailto:info(at)ktc-systemtechnik.de)

## SUSIN i-Tork

43 - A Vadakku thottam pakuthi,  
Near gas company, idigarai, Coimbatore  
641022. Tamil nadu, India

## AHF GROUP

2 Kallang Pudding Road #06-05/06, #07-  
12Mactech Building Singapore 349307. Tel:  
+65 6748 8108 Fax: +65 6748 8917 E-mail:  
[sales@ahfindustries.com](mailto:sales@ahfindustries.com)

