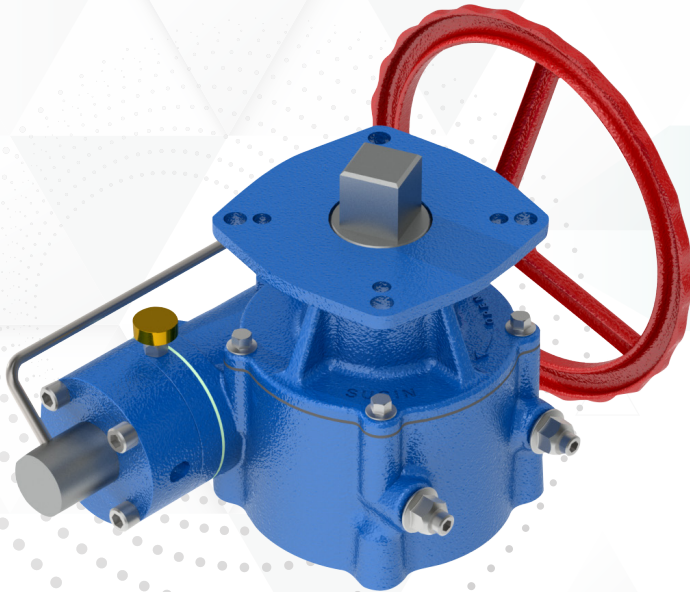


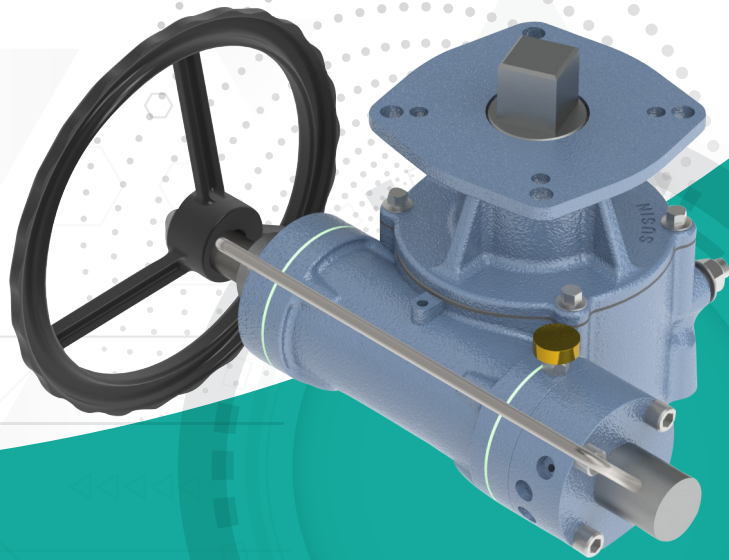


SUSIN I-TORK INDIA PRIVATE LIMITED
An ISO 9001 -2015 Certified Company



MECHANICAL ACTUATORS

**Worm Gear
Actuators
Direct &
Dec clutchable**



ITG Series



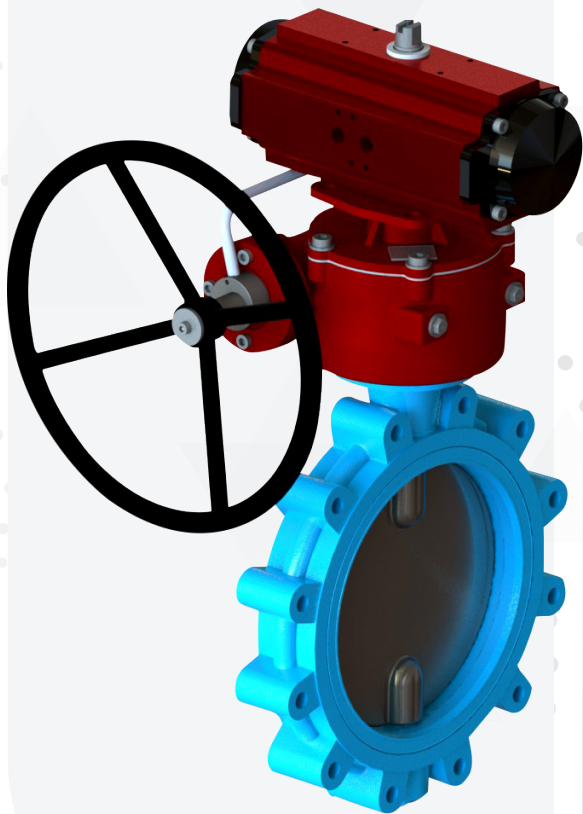
Scan QR Code to
Download E-Catalogue

www.susinma.com

SUSIN I-TORK INDIA PRIVATE LIMITED

Susin Group was founded by Mr. Muthukumar in 1992, as a company specialized in the design, manufacture and installation of Valve Automation Products to Different Industries. In 2006 the company stepped into Marketing to Manufacturing, and to focus more on valve automation Industrial requirements.

We are providing Complete Automation Solution to All kind of Valve Industries where we equipped to Support in Pneumatic, Hydraulic, Electrical & Mechanical Actuators. Susin Produces various range of Critical Products in different Applications



ITG Series

Application

ITG series is designed to provide a manual Override operation of 90° for shut- off valves & dampers which are equipped with pneumatic rotary actuators.

ITG series provides a declutchable manual Override design for use in all industries where a reliable operation of both double acting and spring return pneumatic actuators is required. All units which are to be mounted between the valve and actuator are supplied with actuator mounting flange for flexible usage.

Furthermore, all units can be supplied with plain machinable drive shaft & drive bush which is connecting the actuator & valve with the gear box

OUR GLOBAL PARTNERS

iTork
Korea

KTC
Germany

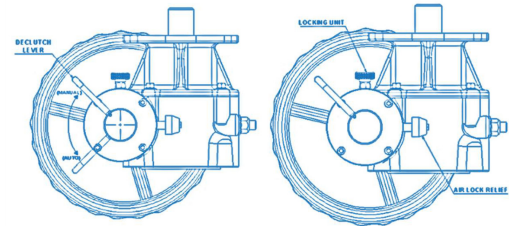
AHF
Singapore

ITG Series



Caution

Make sure lever position should be in auto mode when ITG gear box connect with pneumatic actuator.



Features

- ▶ Integrated Air Relief System.
- ▶ Compact Ductile Casting Housing and Moulding Structure.
- ▶ Lever Locking Mechanism for Automatic and Manual.
- ▶ Proficiency for Addon Attachment like Proximity Sensors.
- ▶ IP-67 Protection Rating.
- ▶ Detachable handwheel.
- ▶ Mounting flanges conforming to ISO5211.
- ▶ Easy Adjustable Mechanical Stoppers to Control the Limits of Opening/Closing Position.
- ▶ Detachable Splined drive bush to permit accurate position between gear and handwheel Operation.

Bushing Type

- ▶ Splined drive bush to provide an accurate alignment of valve stem.

Engage/Disengage Mechanism of ITG

- ▶ Pull the locking unit holder,
- ▶ Rotate the lever to "Manual" position, Now we can operate through handwheel.
- ▶ Make sure gears are fully disengaged from worm gear.
- ▶ For pneumatic operation lever must be placed in "Auto" position.

Technical Specifications

Model No	Input Torque (Nm)	Output Torque (Nm)	MA \pm 10%	Gear Ratio	Actuator Side Mounting		Valve Side Mounting	
					Standard	Option	Standard	Option
ITG-025	18.26	250	13.69	30:1	F07	F05	F07	F05
ITG-045	25.96	450	17.34	38:1	F10	F07	F10	F07
ITG-080	44.96	800	17.78	40:1	F12	F10	F12	F10
ITG-100	56.20	1000	17.79	40:1	F12	F10	F12	F10
ITG-200	99.63	2000	20.07	44:1	F14	F12	F14	F12
ITG-400	182.65	4000	21.89	48:1	F20	F16	F20	F16
ITG-650	287.17	6500	22.63	52:1	F20	F16	F20	F16
ITG-900	369.22	9000	24.37	56:1	F25	F20	F25	F20
ITG-1800	851.48	18000	21.13	62:1	F30	F25	F30	F25

Mentioned specifications & dimensions are subject to change without prior notice for quality improvement

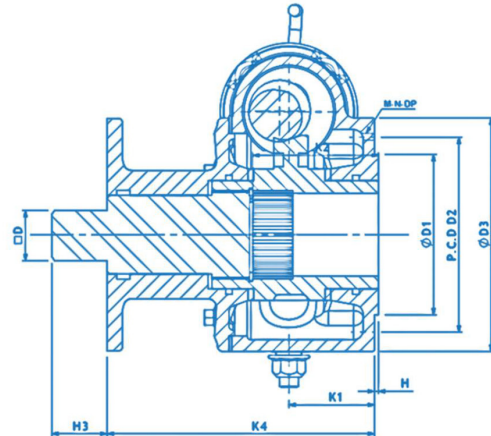
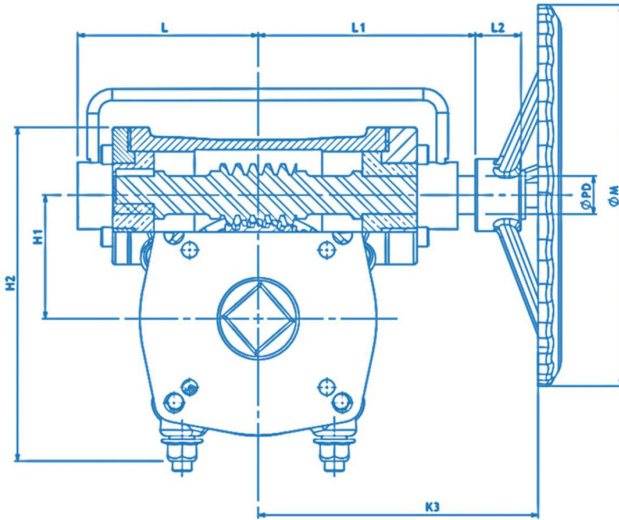
(All dimensions are in mm)

Declutchable Worm Gear Actuator

ITG Series



ITG SERIES



Type - A



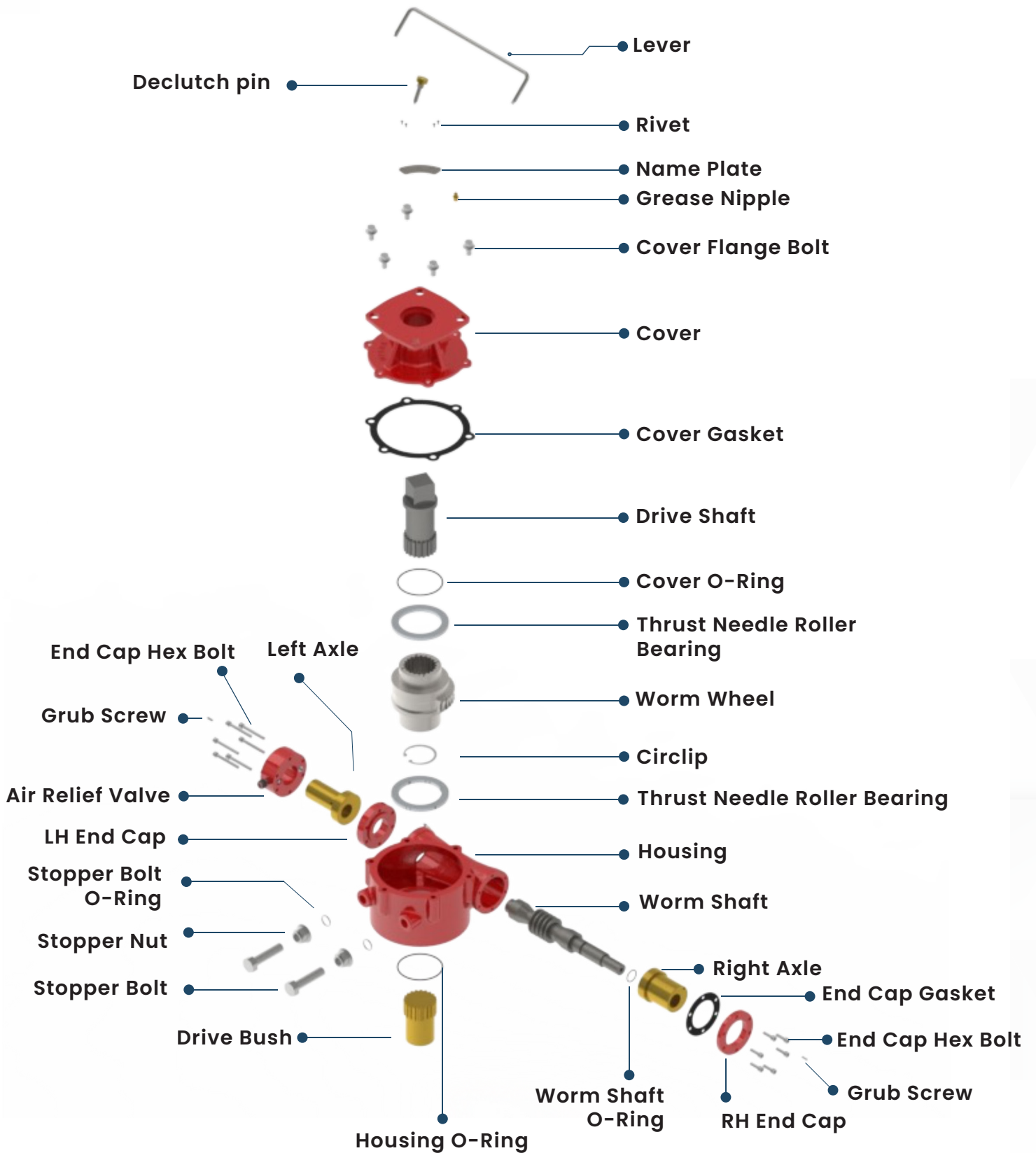
Type - B

Dimensions

MODEL NO	TYPE	Base Part						External Part						Input Shaft Part					
		FLANGE	ØD1	P.C.D		ØD3	H	H1	H2	K1	K2 Max	K3	K4	L	L1	L2	ØPD	KEY	HAND WHEEL
				ØD2	M-N-DP														
ITG-025	A	F07	55	70	4-M8-12	101	2	41	121	35	50	95	115	43	65	22	15	6x6	200
ITG-045		F10	70	102	4-M10-15	125	2	55	135	32.5	55	105	120	55	75	22	15	6x6	250
ITG-080		F12	85	125	4-M12-18	148	2	63.5	165	47	64	150	131	77	102	24	20	8x7	300
ITG-100		F12	85	125	4-M12-18	148	2	63.5	165	47	65	150	131	77	102	24	20	8x7	350
ITG-200		F14	100	140	4-M16-24	163	2	82.5	222	50	66	230	154	85	135	38	20	8x7	400
ITG-400		F16	130	165	4-M20-30	210	3	118	315	70	85	260	188	124	161	38	25	8x6	500
ITG-650	B	F20	160	200	8-M16-24	250	3	128	315	75	105	285	201	145	178	42	30	10x8	560
ITG-900		F25	200	254	8-M16-30	300	3	150	410	80	115	320	210	183	202	45	30	10x8	630
ITG-1800		F30	230	298	8-M20-30	350	3	160	480	89	155	355	142	238	256	45	30	10x8	710

Mentioned specifications & dimensions are subject to change without prior notice for quality improvement

(All dimensions are in mm)

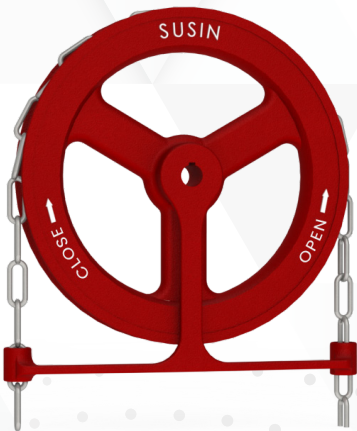




Casting Wheel

Ranges from 8" to 16" Diameter

- ✔ Varies type of casting, fabricated handwheels & chain wheels can be offered by Susin
- ✔ High quality material has been used for best construction.
- ✔ Hand wheels provide a simple and direct way to manually control valves.
- ✔ **Quick Response** : With hand wheels, you can quickly open or close valves in response to changing conditions, maintenance needs.
- ✔ **Visual Positioning** : Hand wheels have markings or indicators that show the direction of rotation to open/close the valve.



Chain Wheel

Ranges from 4" to 20" Diameter



Fabricated Wheel

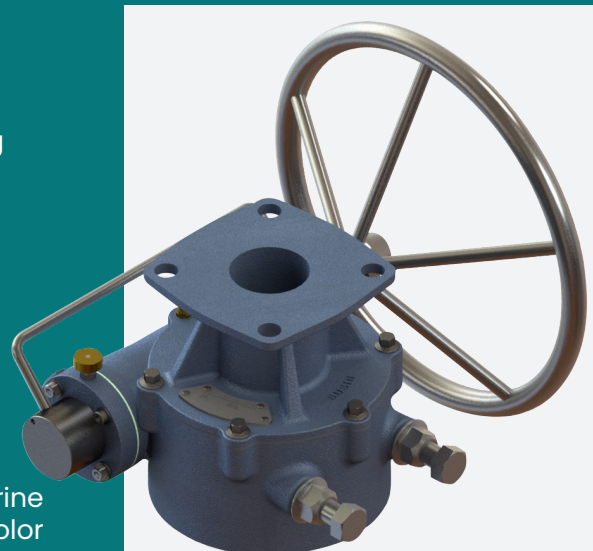
Ranges from 8" to 40" Diameter

Painting

- ✔ Applicable as per the standard ISO 12944-2
- ✔ We are providing our products in the following standard colors

S NO	COLOR NAME	COLOR CODE	RANGE (micron)
1	Sky Blue (STANDARD)	RAL 5015	150 TO 225
2	Brown Red (OPTIONAL)	RAL 3011	150 TO 225
3	Jet Black (OPTIONAL)	RAL 9005	150 TO 225

We provide special painting system for marine applications and we can able to custom build color as per the design of ITG Series for customer requirement



S.No	Description	Material				Qty
		Standard	ASTM	Optional	ASTM	
1	Housing	Ductile Iron	A536-65-45-12	WCB - Steel	ASTM A216	1
2	Cover	Ductile Iron	A536-65-45-12	WCB - Steel	ASTM A216	1
3	Worm Wheel	Ductile Iron	A536-80-55-06	Aluminium Bronze	B148-C95800	1
4	Worm Shaft	Carbon Steel	A576-1045	----	----	1
5	Air Relief Valve	Aluminium Alloy	----	----	----	1
6	RH End Cap	Ductile Iron	A536-65-45-12	WCB - Steel	ASTM A216	1
7	LH End Cap	Ductile Iron	A536-65-45-12	WCB - Steel	ASTM A216	1
8	Right Axle	Carbon Steel	A576-1045	WCB - Steel	ASTM A216	1
9	Left Axle	Carbon Steel	A576-1045	WCB - Steel	ASTM A216	1
10	Drive Bush	Carbon Steel	A576-1045	WCB - Steel	ASTM A216	1
11	Drive Shaft	Carbon Steel	A576-1045	WCB - Steel	ASTM A216	1
12	Handwheel	Ductile Iron	A536-65-45-12	Stainless Steel	SS-304	1
13	Lever	Carbon Steel	A576-1045	Stainless Steel	SS-304	1
14	Cover Gasket	NBR	----	Viton	D1418	1
15	End Cap Gasket	NBR	----	Viton	D1418	2
16	Taper Roller Bearing	Special Steel	A295-52100	Special Steel	A295--52100	2
17	Thrust Needle Roller Bearing	Special Steel	A295-52100	Special Steel	A295--52100	2
18	Stopper Bolt	Alloy Steel	A322-4135	Stainless Steel	SS-304	2
19	Stopper Nut	Alloy Steel	A322-4135	Stainless Steel	SS-304	2
20	Stopper Washer	Alloy Steel	A322-4135	Stainless Steel	SS-304	2
21	Cover Flange Bolt	Alloy Steel	A322-4135	Stainless Steel	SS-304	As Req
22	End Cap Hex Bolt	Alloy Steel	A322-4135	Stainless Steel	SS-304	8
23	End Cap Plain Washer	Alloy Steel	A322-4135	Stainless Steel	SS-304	8
24	Handwheel Key	Alloy Steel	A322-4135	Stainless Steel	SS-304	1
25	Handwheel Locking Washer	Alloy Steel	A322-4135	Stainless Steel	SS-304	1
26	Handwheel Locking Bolt	Alloy Steel	A322-4135	Stainless Steel	SS-304	1
27	Indication Plate Screw	Alloy Steel	A322 4135	Stainless Steel	SS-304	4
28	Grease Nipple	Brass	B584-52100	Brass	B584-52100	1
29	Worm Wheel O-Ring	NBR	Buna N	Viton	D1418	2
30	Housing O-Ring	NBR	Buna N	Viton	D1418	1
31	Worm Shaft O-ring	NBR	Buna N	Viton	D1418	1
32	Stopper Bolt O-ring	NBR	Buna N	Viton	D1418	2
33	Circlip	Stainless Steel	SS-304	Stainless Steel	SS-316	1
34	Name Plate	Stainless Steel	SS-304	Stainless Steel	SS-316	1
35	Name Plate Rivet	Stainless Steel	SS 304	Stainless Steel	SS-316	4

Other Products

ITG Series



Hydraulic Actuators

(Rotary & Linear types)



Electrical Actuators

(Rotary & Linear types)



Pneumatic Actuators

(Rotary & Linear types)

Susin Group Global Presence



Scan QR Code to
download E-Catalogue



MANUFACTURING FACILITIES

INDIA

SUSIN I-TORK INDIA PRIVATE LIMITED
43A9 , Vadakku Thottam, Idigarai,
Coimbatore, Tamilnadu, India - 641022
E-mail : venkat@susinma.com
Website : www.susinma.com
Tel : +91 95009 96064

KOREA

I-TORK CONTROLS LTD
74-6 , Chunui-Dong, Wonmi-Gu, Bucheon Si,
Gyeonggi-Do, South Korea, Zip : 420-120
Tel : +82-2-855-1365
Fax : +82-2-855-1367
E-mail : we123@itork.com
Website : www.i-tork.com

Germany

KTC SYSTEMTECHNIK GMBH
Krähenweg 11, D 22459 Hamburg,
Germany
Tel : +49 (0)40 5714752-0
Fax : +49 (0)40 5714752-22
E-mail : teichler@ktc-systemtechnik.de

SALES & SUPPORT

SINGAPORE

AHF INDUSTRIES - HEAD OFFICE
2 , Kallang Pudding #07-12, #06-05/06,
Mac Tech Building Singapore, 349307
Tel : +65 6748 8108
Fax 1 : +65 6842 5567
Fax 2 : +65 6748 8917

MALAYSIA

AHF ENGINEERING Sdn. Bhd.
No 5 , Jalan USJ 1/31, Taman Subang Permai,
47600 Subang Jaya Selangor, Malaysia
Tel : +603-8024-0940
E-mail : cky@ahfengineering.com
sales@ahfengineering.com

UNITED ARAB EMIRATES

SUSIN I-TORK ME FZC
Y61 , Executive Suite
Post Box No - 122643, Saif Zone Sharjah
United Arab Emirates
Tel : 971 529407969
Fax : +65 6748 8917