



Canadian Pony Club



## D STUDY GUIDE

### Abstract

Study Guide for those working towards their D Level in Pony Club.  
Prepared by CPC Education Committee.



# CANADIAN PONY CLUB

## STUDY GUIDE

LEVEL "D"

**2019**

Loyalty

Character

Sportsmanship

### Table of Contents

Topics .....	2
LESSON 1 .....	3
Parts of a Pony .....	3
LESSON 2 .....	7
Home and Habits .....	7
LESSON 3 .....	12
Feeding .....	12
LESSON 4 .....	15
Safety, Handling and Care .....	15
LESSON 5 .....	18
Grooming Tools .....	18
LESSON 6 .....	20
Grooming .....	20
LESSON 7 .....	21
Saddlery .....	21
LESSON 8 .....	28
Riding .....	28
LESSON 9 .....	30
Colours & Markings .....	30
MY CHECKLIST .....	35
Answer key .....	37
Home & Habits .....	37
Feeding .....	37
Safety, Handling and Care .....	37
Grooming Tools .....	38
Saddlery .....	38
Riding .....	39



# CANADIAN PONY CLUB

## STUDY GUIDE

LEVEL "D"

2019

Loyalty

Character

Sportsmanship

### Topics

Taken from 2019 CD TP Requirements.

**Parts of the horse:** Identify simple parts, of the pony (approximately 20).

**Safety, Handling and Care:** Demonstrate the ability to tie a quick release knot. Know how to approach and put on a halter (with assistance, if necessary), and lead a pony at the walk. Candidates should show common sense and be able to discuss rules for working around a pony.

**Saddlery:** Know the parts of the bridle and simple parts of the saddle (e.g., pommel, seat, cantle, skirt, flap, leathers, irons, girth) numnah, and two reasons for cleaning tack. Demonstrate how to clean the bit.

**Feeding:** Know what your own pony eats or drinks, stressing the importance of water. Show how to feed a treat.

**Grooming:** Identify and use the dandy brush and curry comb. Use common sense when working around the pony and discuss ways to be safe in the stable.

**Stable and Pasture:** Describe candidate's own pony's home, habits, likes and dislikes. Explain how it keeps warm in the winter.

**Health and Vet:** Not tested at this level.

**Foot and Shoeing:** Not tested at this level.



# CANADIAN PONY CLUB

## STUDY GUIDE

LEVEL "D"

2019

Loyalty

Character

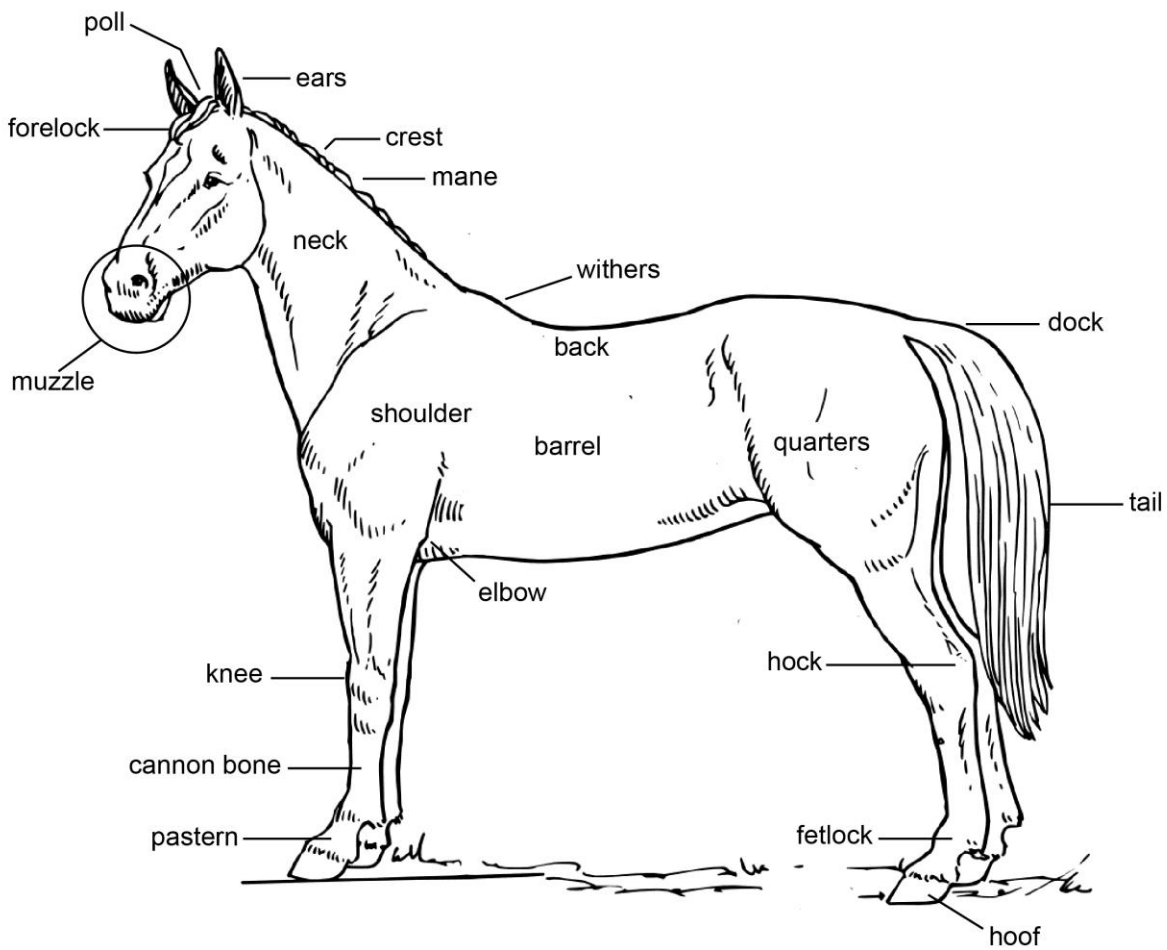
Sportsmanship

### LESSON 1

#### Parts of a Pony

##### Topic Outline

At the D level, you will learn at least 20 parts of the pony.





# CANADIAN PONY CLUB

## STUDY GUIDE

LEVEL "D"

2019

Loyalty

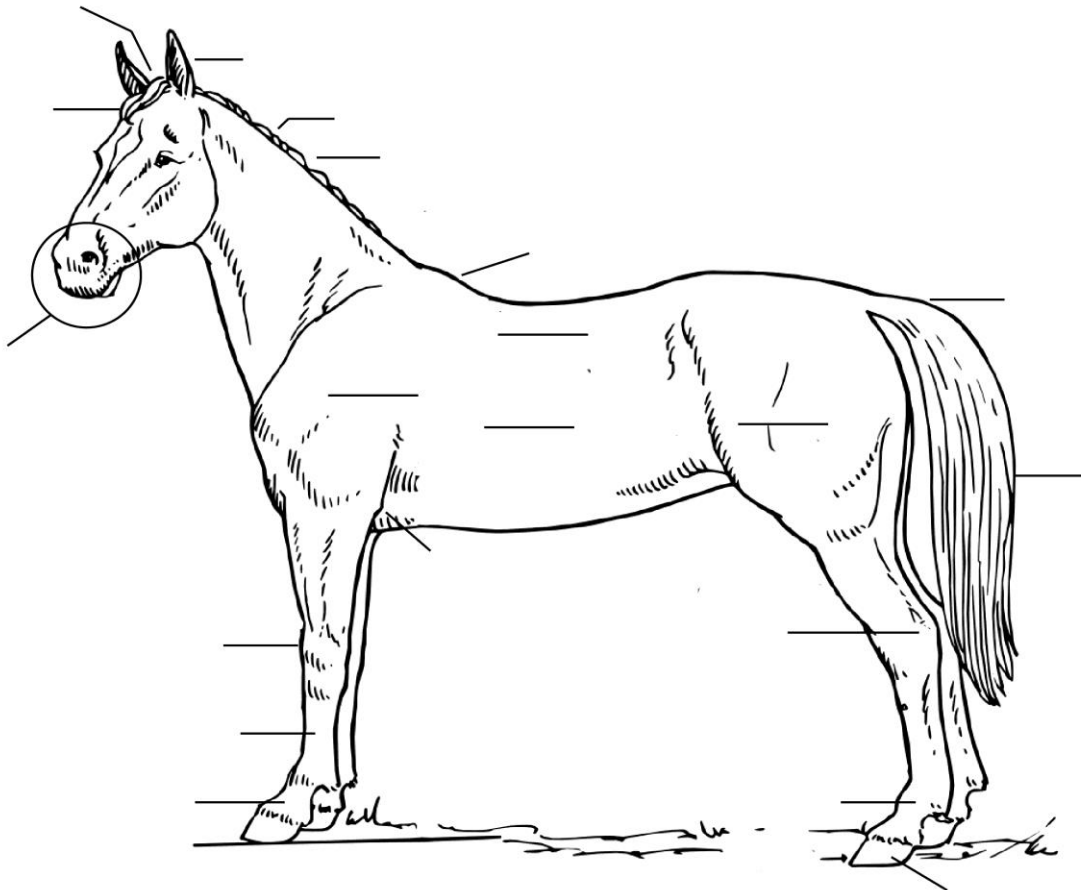
Character

Sportsmanship

### Assignment

1. Look at the picture of the horse. Put the letter beside the correct part.

knee	a	ears	h	barrel	o
hock	b	shoulder	i	back	p
mane	c	neck	j	hoof	q
forelock	d	tail	k	withers	r
cannon bone	e	poll	l	fetlock	s
pastern	f	dock	m	elbow	t
crest	g	muzzle	n	quarters	u



Are you ready for some other ones?



# CANADIAN PONY CLUB

## STUDY GUIDE

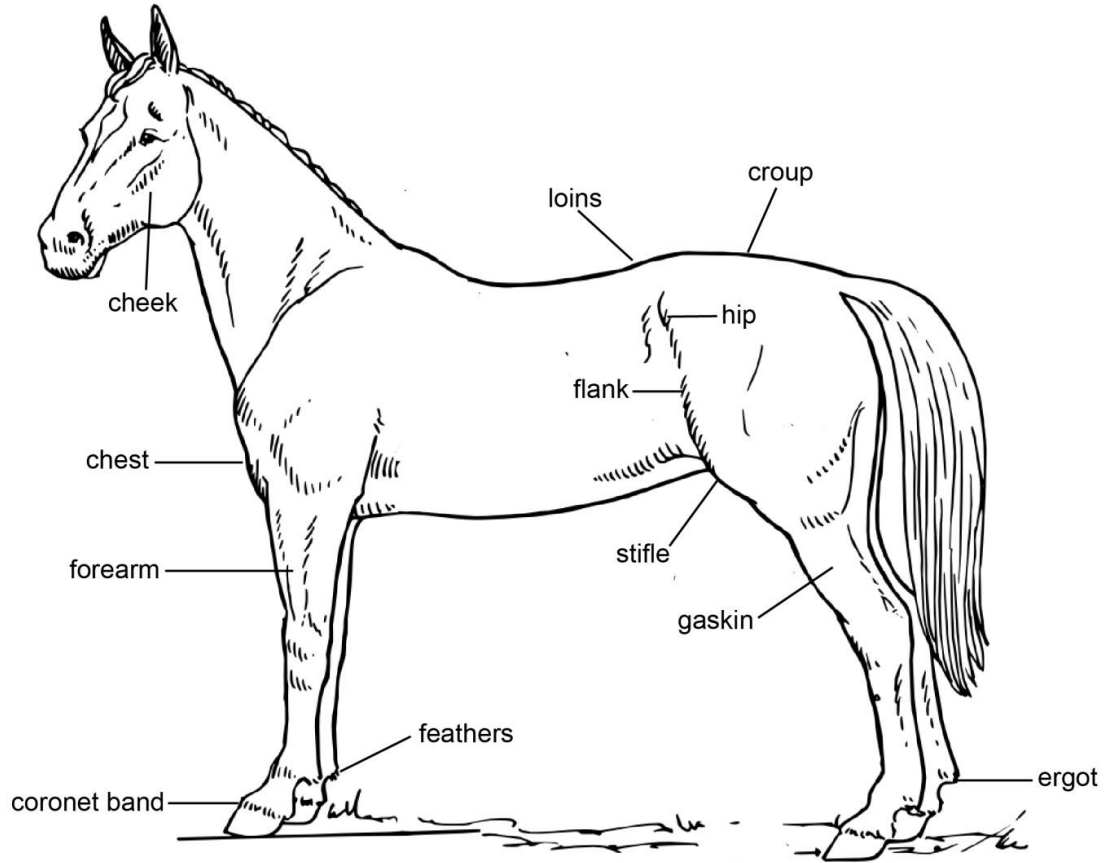
LEVEL "D"

2019

Loyalty

Character

Sportsmanship





# CANADIAN PONY CLUB

## STUDY GUIDE

LEVEL "D"

2019

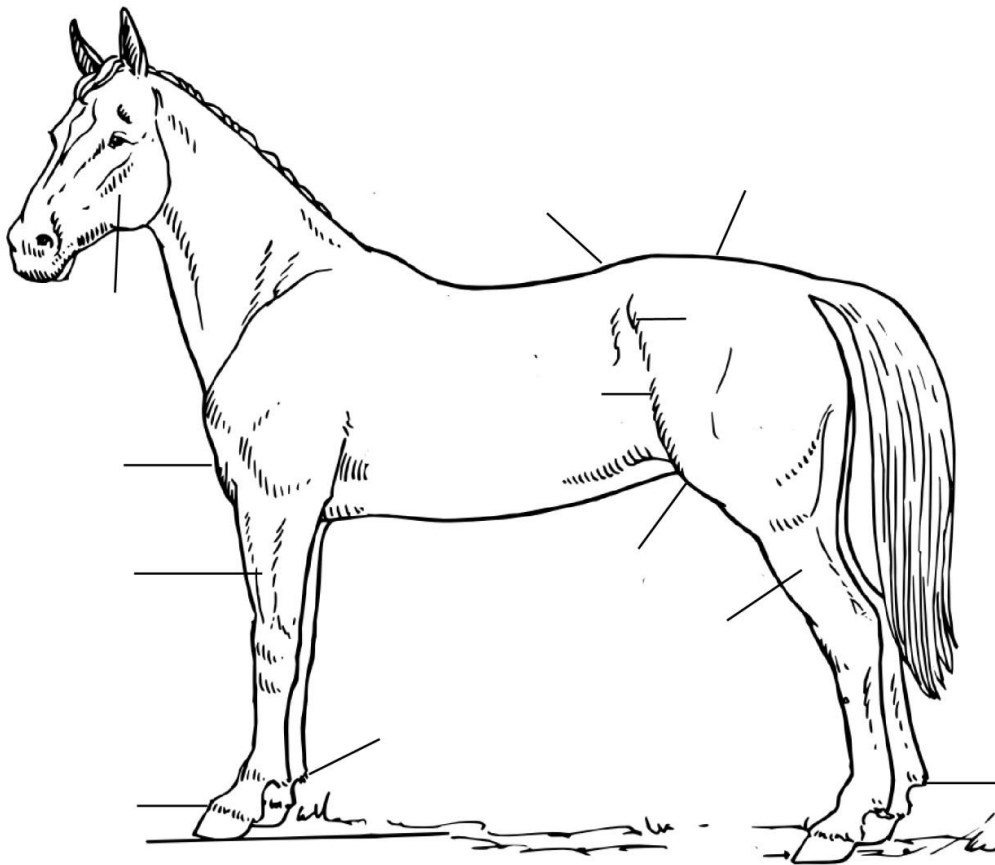
Loyalty

Character

Sportsmanship

2. Put the correct name beside the following parts:

stifle	a	forearm	e	loins	i
coronet band	b	flank	f	croup	j
cheek	c	chest	g	feathers	k
gaskin	d	ergot	h	hip	l





# CANADIAN PONY CLUB

## STUDY GUIDE

### LEVEL "D"

2019

Loyalty

Character

Sportsmanship

## LESSON 2

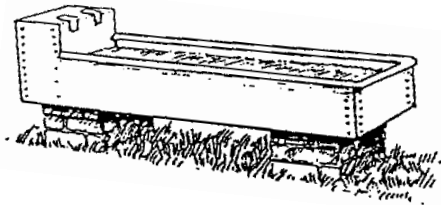
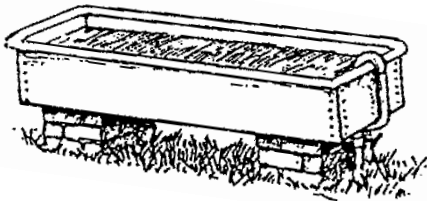
### Home and Habits

#### Topic Outline

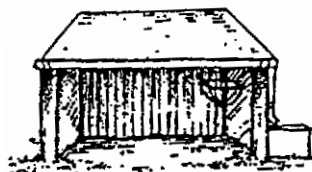
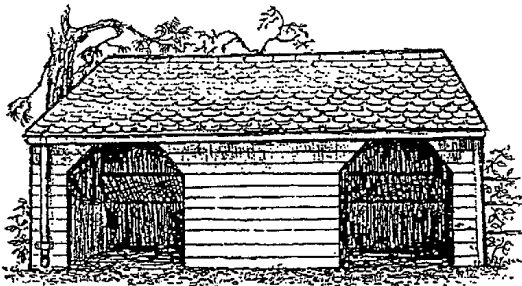
Ponies live in different kinds of homes. Some ponies live in a stable all day. Some ponies live outside part of the time, and in the barn part of the time.

Some ponies live in a field or a pasture all of the time. When a pony lives in a field, it is called a grass-kept horse. He must have:

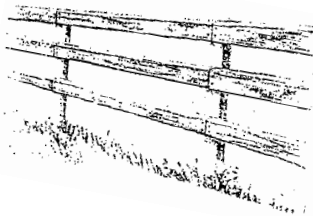
1. Water



2. Shelter



3. Safe Fences



4. Access to food during the day.





# CANADIAN PONY CLUB

## STUDY GUIDE

### LEVEL "D"

2019

Loyalty

Character

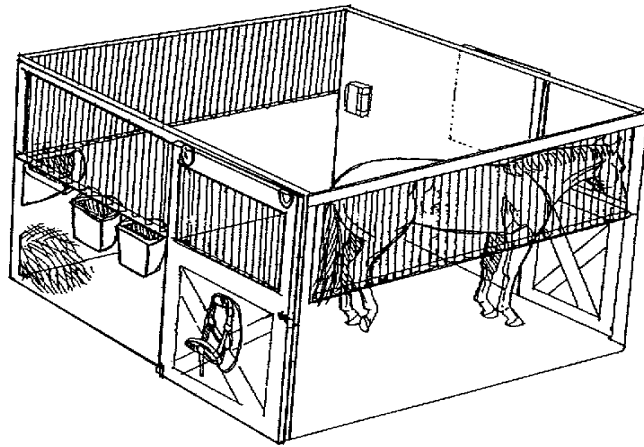
Sportsmanship

Some ponies spend all or most of their time in a barn.

A pony who lives in the barn needs lots of bedding so that he will be comfortable. Some good bedding for your pony would be **shavings, bedding pellets, or straw.**

He also needs water all of the time. Water can be given to your horse in his stall using a **bucket.**

Some ponies have a toy in their stall so they won't get bored.



List some of the good things that you see in this stall:

---

---

---

---

### Assignment

#### Where does your favourite pony live?

1. Does the pony live outside most of the time or in the barn? \_\_\_\_\_
2. If the pony lives in the barn some of the time, he will need lots of good bedding. One good bedding is: \_\_\_\_\_
3. Does the pony live both in the field and in the barn? YES or NO



# CANADIAN PONY CLUB

## STUDY GUIDE

LEVEL "D"

2019

Loyalty

Character

Sportsmanship

4. When your pony lives in a field most of the time, he will need:

a) \_\_\_\_\_

b) \_\_\_\_\_

c) \_\_\_\_\_





# CANADIAN PONY CLUB

## STUDY GUIDE

LEVEL "D"

2019

Loyalty

Character

Sportsmanship

### Keeping Warm

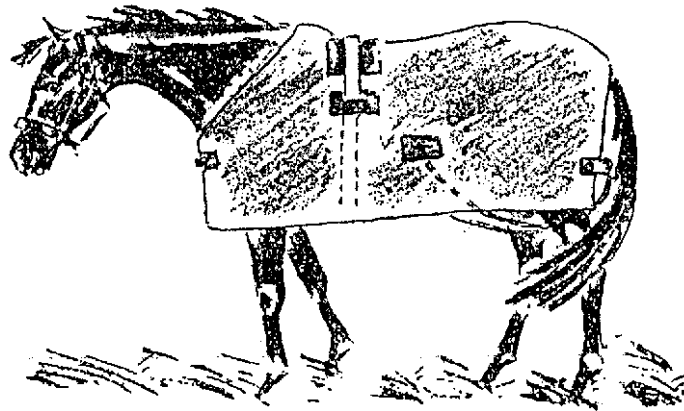
When winter comes, ponies have to keep warm.

Some ways that a pony can keep warm are:

- 1) he grows a nice furry coat
- 2) he lives inside a barn or has a shed in a field to stay in
- 3) he wears a blanket

1. How does your favourite pony keep warm in the winter? \_\_\_\_\_

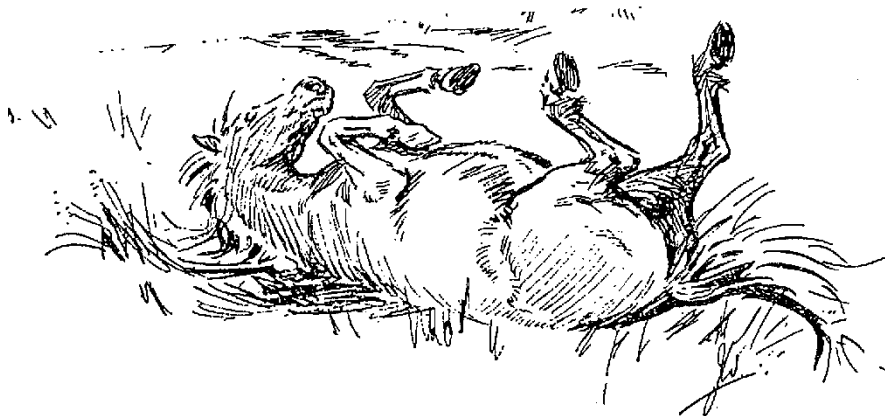
\_\_\_\_\_



### Likes and Dislikes

Most horses and ponies have things that they like and things that they dislike.

Many ponies like to roll in the dirt. This helps to clean their skin.





# CANADIAN PONY CLUB

## STUDY GUIDE

LEVEL "D"

**2019**

---

Loyalty

Character

Sportsmanship

1. Many ponies like treats such as apples and carrots. What is your pony's favourite treat?

\_\_\_\_\_

Some ponies hate bikes or trucks.

Some ponies hate whips or spurs.

2. What is one thing that your favourite pony likes? \_\_\_\_\_

\_\_\_\_\_

3. What is one thing that your favourite pony dislikes? \_\_\_\_\_

\_\_\_\_\_



# CANADIAN PONY CLUB

## STUDY GUIDE

LEVEL "D"

2019

Loyalty

Character

Sportsmanship

### LESSON 3

#### Feeding

##### Topic Outline

All ponies need **water at all times** and **good food** like grass or hay throughout the day to stay healthy.

**Water** is very important for your pony. He should be allowed to have as much clean water as he wants.

**Feeding** your pony a **few times a day** rather than once a day is better for him. If your pony is on grass, he will be eating frequently, which is good for him - unless he starts to get too fat!

Some good foods for horses and ponies are:

<b>Grass</b>	<b>Hay</b>	<b>Sweet Feed</b>
<b>Pellets</b>	<b>Oats</b>	<b>Salt</b>
<b>Water</b>	<b>Beet pulp</b>	

All ponies should have a block of salt in their field or stall. If they are outside, they should have access to a salt block.

1. What does your favourite pony eat? \_\_\_\_\_

\_\_\_\_\_

2. What does he like as a treat? \_\_\_\_\_

\_\_\_\_\_

3. Can you answer these questions?

- 1) Do ponies living in a field need shelter? YES or NO
- 2) Do all ponies need lots of good clean water? YES or NO
- 3) Do all ponies live in a barn? YES or NO
- 4) Is straw a good bedding for horses? YES or NO
- 5) Are carrots a good treat for a pony? YES or NO
- 6) Can you name two ways that a pony can keep warm in the winter?
  - a) \_\_\_\_\_
  - b) \_\_\_\_\_



# CANADIAN PONY CLUB

## STUDY GUIDE

LEVEL "D"

2019

Loyalty

Character

Sportsmanship

### WORD FIND:

PONY

BARN

PAIL

POLL

SHELTER

CLEAN WATER

BEDDING

GRASS

HAY

SHAVINGS

SALT

TAIL

CARROT





# CANADIAN PONY CLUB

## STUDY GUIDE

LEVEL "D"

**2019**

---

Loyalty

Character

Sportsmanship

### My Favourite Pony

NAME \_\_\_\_\_

COLOUR \_\_\_\_\_

AGE \_\_\_\_\_

Draw or Paste a picture of your favourite pony in this space



# CANADIAN PONY CLUB

## STUDY GUIDE

LEVEL "D"

2019

Loyalty

Character

Sportsmanship

## LESSON 4

### Safety, Handling and Care

#### Topic Outline

When walking up to a pony in his field or in his stall:

1. It is important to talk to him. This lets him know where you are.
2. If you surprise your pony he might run away or kick you by accident.

If you want to give him a **treat**:

1. Always make sure that you hold your hand flat or put the treat in a bucket.
2. Curved fingers might look like a carrot to a hungry or greedy pony.

#### Leading your pony:

1. When putting on a halter you must always be very gentle.
2. Be careful to never poke him in the eye or hurt his ears. Your instructor will show you how to properly put a halter on your pony. You must practice putting on the halter carefully and gently.
3. The halter should fit snugly but not too tight.
4. A lead rope should always be attached to the halter for leading and tying.
5. Never lead a pony just by its halter. This can be dangerous and might result in injuries to you, or your pony might get loose.
6. When leading a pony, it is important to walk beside the pony's shoulder so that he can't step on you. Usually we lead a pony from the left side.
7. When turning your pony out to his paddock, turn and close the gate, then lead the pony a safe distance from the gate. Turn the pony to face the gate and slowly slip the halter off his head, then walk away slowly.
8. When turning your pony, turn him away from you, to his right. This will stop him from stepping on your toes.
9. Always wear proper boots, gloves and a helmet when handling your pony.





# CANADIAN PONY CLUB

## STUDY GUIDE

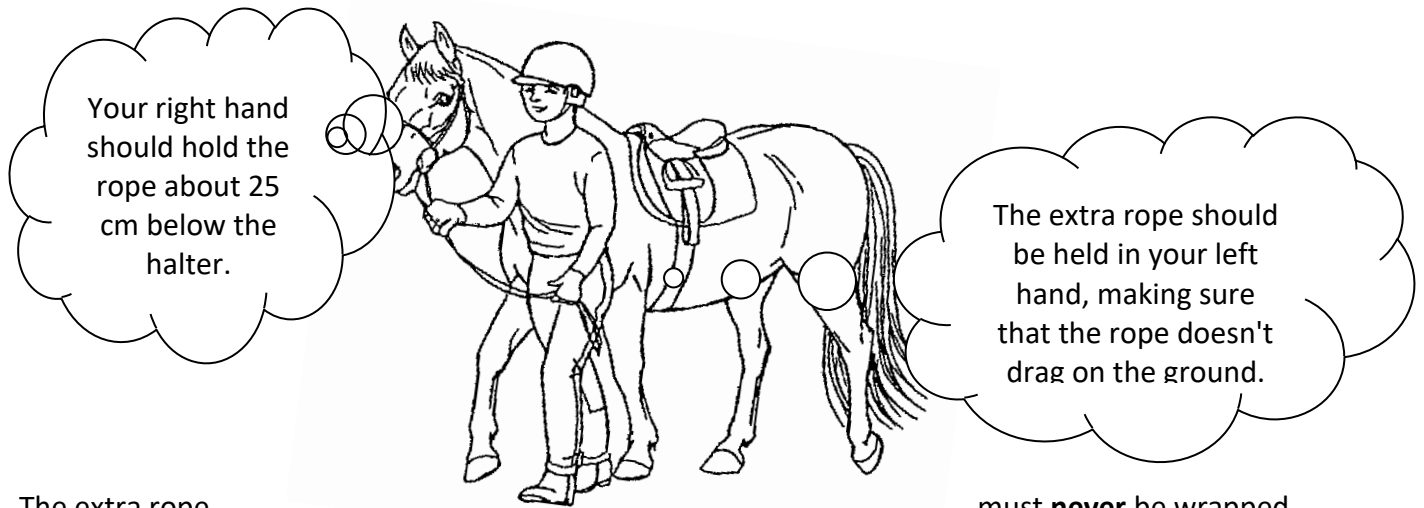
LEVEL "D"

2019

Loyalty

Character

Sportsmanship



The extra rope around your arm or hand.

must **never** be wrapped

### Tying a pony up

1. The Quick Release knot is used when tying your pony.
2. This is a special kind of knot which allows us to release the pony quickly if he should get into trouble.
3. Before tying a real pony, you must practice it until you can tie it and release it properly.
4. Your instructor will show you how to tie this special knot.
5. You should never tie a pony without an adult supervising.
6. Always tie to something solid, like a fence post or a ring. Never tie to a board on a fence. Attach a binder twine loop on your trailer to tie to.





# CANADIAN PONY CLUB

## STUDY GUIDE

LEVEL "D"

2019

Loyalty

Character

Sportsmanship

### Assignment

#### ANSWER TRUE OR FALSE

1. When approaching a pony in the field, it is best to sneak up on him quietly. TRUE or FALSE
2. When feeding a treat, you should keep your hand flat. TRUE or FALSE
3. You should always use a halter and lead rope when leading your pony. TRUE or FALSE
4. Always tie a pony with a square knot to make sure he doesn't get away. TRUE or FALSE
5. When leading a pony never wrap the extra rope around your hand. TRUE or FALSE
6. You should always speak to your pony before entering the stall. TRUE or FALSE

#### Circle the best answer:

7. When leading your pony, you should:
  - a) use both a halter & lead shank
  - b) put a rope around his neck
  - c) just pull on his mane
8. The best knot to use when tying your pony is:
  - a) square knot
  - b) quick release knot
  - c) slip knot
9. While catching and leading a pony, it is important to wear:
  - a) running shoes in case you need to chase him
  - b) boots in case the pony steps on you
  - c) slippers so the pony will not hear you coming
10. When leading your pony, it is best to lead him:
  - a) on his left side (the near side)
  - b) on his right side (the off side)
  - c) with you in front, so he learns to follow your feet
11. When leading your pony, your body should be:
  - a) just in front of his nose
  - b) beside his neck/shoulder



# CANADIAN PONY CLUB

## STUDY GUIDE

LEVEL "D"

2019

Loyalty

Character

Sportsmanship

- c) back by his flank

## LESSON 5

### Grooming Tools

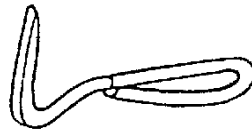
#### Topic Outline

All ponies need to be groomed so that they will stay healthy and look nice.

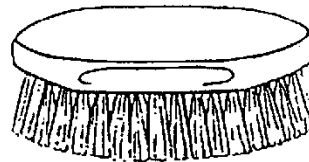
Ponies should be groomed before and after each ride.

#### Here are some grooming tools:

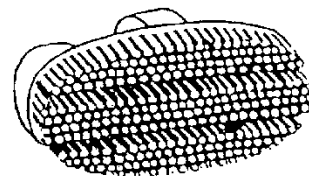
1. **Hoof pick** - this is used to clean out the pony's feet. It is always used from heel to toe.



2. **Dandy brush** - this brush has stiff bristles and is used to remove the heavy mud and dirt. It should not be used on the face, mane, tail or lower legs.



3. **Curry comb** - this may be made of rubber or plastic. The plastic ones come in many different colours. The curry comb is used to clean the dandy brush. It should not be used on the horse.



Most ponies enjoy being groomed. You should always brush your pony firmly but gently.

Only use a very soft brush, such as a **face brush or body brush**, on the face and be very gentle around the eyes, ears and face.



# CANADIAN PONY CLUB

## STUDY GUIDE

LEVEL "D"

2019

Loyalty

Character

Sportsmanship

### Assignment

#### CAN YOU FIND THE ANSWER?

1. Name the grooming tool that removes heavy mud. \_\_\_\_\_

\_\_\_\_\_

2. Name the grooming tool that is used to clean out the pony's feet. \_\_\_\_\_

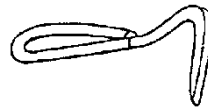
\_\_\_\_\_

3. Name the grooming tool used to clean the other brushes. \_\_\_\_\_

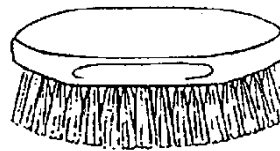
\_\_\_\_\_

#### Identify each tool from its picture

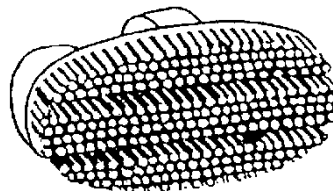
4. \_\_\_\_\_



5. \_\_\_\_\_



6. \_\_\_\_\_





# CANADIAN PONY CLUB

## STUDY GUIDE

LEVEL "D"

2019

Loyalty

Character

Sportsmanship

## LESSON 6

### Grooming

#### Topic Outline

1. The first part of the horse you should clean is the feet. Do not try this on your own until you have had some practise.
2. The feet are cleaned using the hoof pick from heel to toe. Never go from the toe to the heel.
3. Some ponies love to be brushed. Some are ticklish and need to be brushed more softly.
4. Brushing your pony is a good time to check your pony for injuries.
5. Make sure that you never stand directly behind the pony.
6. Always brush with the direction of the hair.
7. Brush the mane and tail with a body brush or mane comb, but be careful not to break the hair.
8. Clean your brush often using the curry comb.





# CANADIAN PONY CLUB

## STUDY GUIDE

LEVEL "D"

2019

Loyalty

Character

Sportsmanship

### LESSON 7

#### Saddlery

##### Topic Outline

Saddlery is another name for tack. Tack includes all of the saddles, bridles, halters and other equipment that our ponies wear.

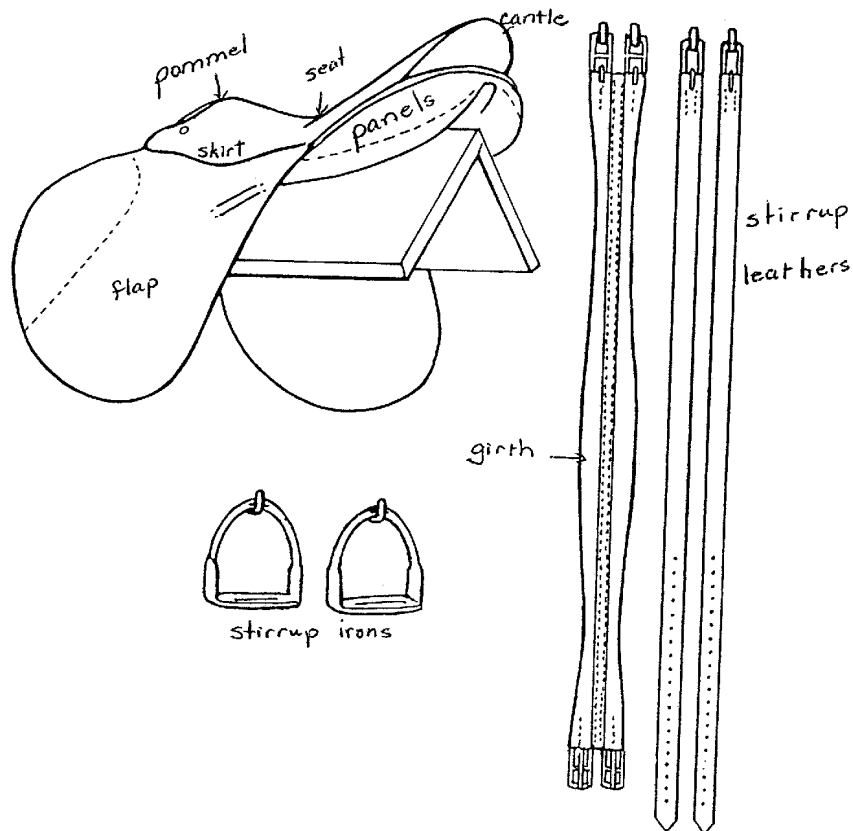
##### Assignment

##### THE SADDLE

At the D level, you must know these parts of the saddle.

Study the picture carefully, and then try to fill in the blanks on the next page.

You should also know that a saddle pad cut in the shape of the saddle is called a **numnah**.





# CANADIAN PONY CLUB

## STUDY GUIDE

LEVEL "D"

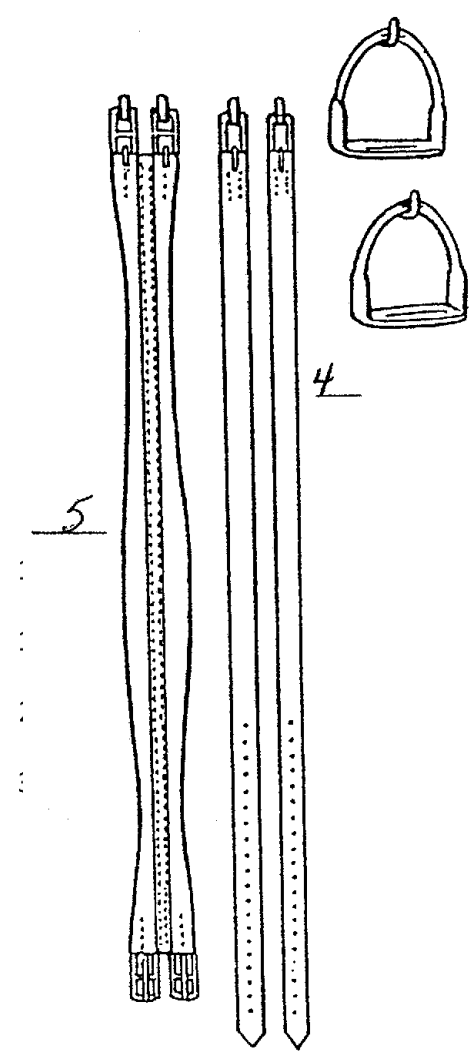
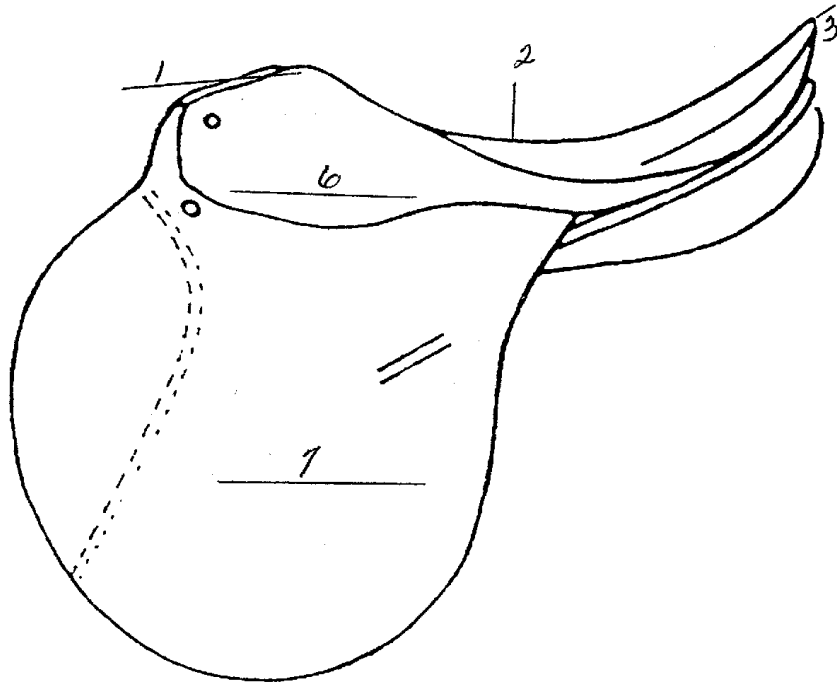
2019

Loyalty

Character

Sportsmanship

### Name the parts of the saddle



- 4. \_\_\_\_\_
- 5. \_\_\_\_\_
- 6. \_\_\_\_\_
- 7. \_\_\_\_\_



# CANADIAN PONY CLUB

## STUDY GUIDE

LEVEL "D"

2019

Loyalty

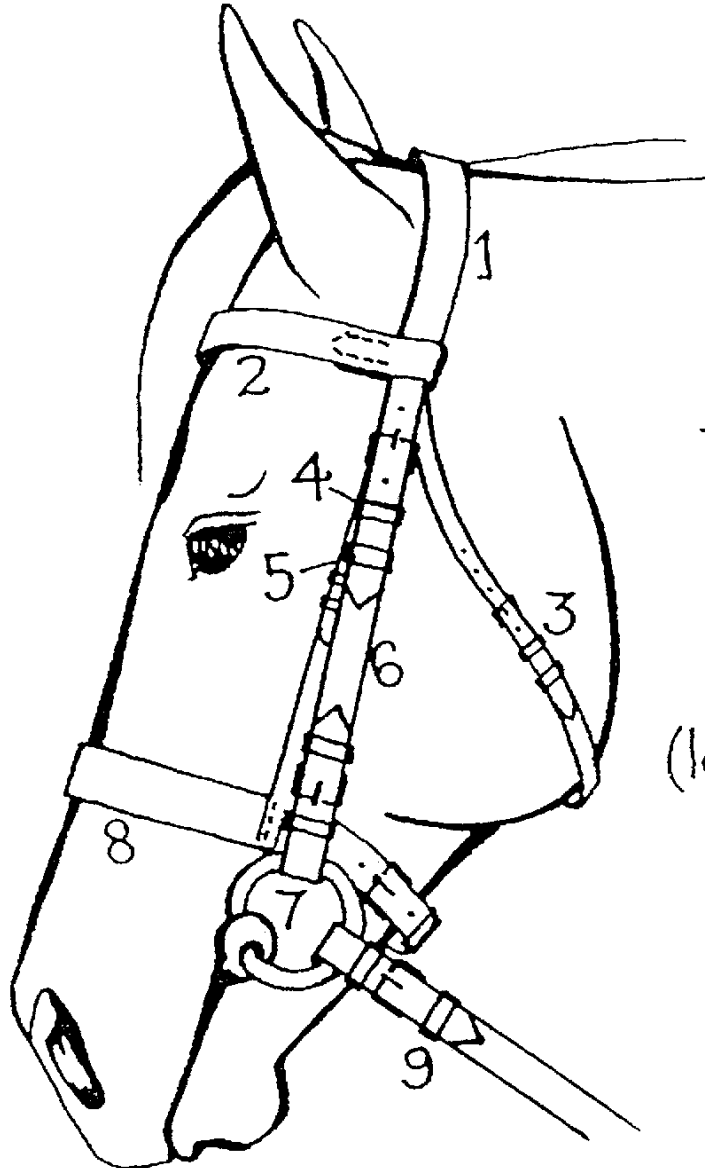
Character

Sportsmanship

### THE BRIDLE

D members must know only the underlined parts.

Study the picture carefully, and then try to fill in the blanks on the next page.



crown  
head piece 1  
brow band 2  
throat lash 3  
keeper 4  
runner 5  
cheek piece 6  
(loose ring snaffle)  
bit 7  
cavesson  
noseband 8  
rein 9





# CANADIAN PONY CLUB

## STUDY GUIDE

LEVEL "D"

2019

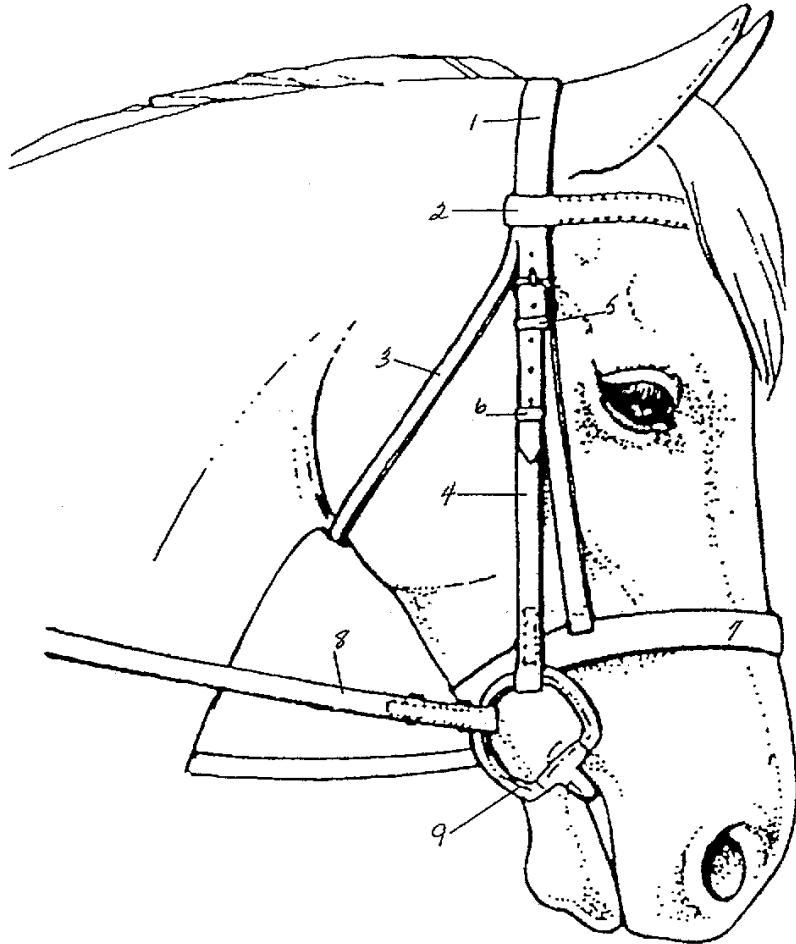
Loyalty

Character

Sportsmanship

### Name the parts of the bridle

1. \_\_\_\_\_
2. \_\_\_\_\_
3. \_\_\_\_\_
4. \_\_\_\_\_
5. \_\_\_\_\_
6. \_\_\_\_\_
7. \_\_\_\_\_
8. \_\_\_\_\_
9. \_\_\_\_\_





# CANADIAN PONY CLUB

## STUDY GUIDE

LEVEL "D"

2019

Loyalty

Character

Sportsmanship

### TACK CLEANING

It is important that we look after our tack, keeping it clean and supple. This is very important for four reasons.

1. Clean, supple tack is more comfortable for your pony.
2. Clean, supple tack is more comfortable for you.
3. Tack is very expensive, and lasts longer if it is well looked after.
4. Clean tack looks better and shows that you care.

### HOW TO CLEAN TACK

Each time you ride, you should wash your bit carefully. You can easily clean your bit by putting it under the tap, dipping it into a bucket of water, or by wiping it with a damp sponge or cloth.

Your bridle and saddle should be cleaned fully about once a week. This means taking all of your tack apart and cleaning each piece.

In order to clean your tack, you will need:

- **a bucket of warm (not hot) water**
- **a couple of sponges and cloths**
- **some saddle soap**

Start by wringing out a cloth or sponge and wipe each piece of tack. Next, rub saddle soap onto each piece. Don't put on too much soap. Wipe off any extra soap.

Clean your bit with a cloth and water. You can use a soft toothbrush to get stubborn stains. Do not use saddle soap on the bit.

Your instructor will show you how to take your tack apart and how to clean it properly. When you are finished, your instructor will show you how to put your tack back together. The more often you do this, the easier it gets.



# CANADIAN PONY CLUB

## STUDY GUIDE

LEVEL "D"

**2019**

Loyalty

Character

Sportsmanship

### Can you answer these questions?

1. The back of the saddle is called the:
  - a) Pommel
  - b) Seat
  - c) Cantle
2. The part of the bridle that goes into the pony's mouth is called the \_\_\_\_\_.
3. The front of the saddle is called the:
  - a) Pommel
  - b) Seat
  - c) Cantle
4. One reason to keep your tack clean is so that it will be \_\_\_\_\_ and \_\_\_\_\_.
5. You should use \_\_\_\_\_ and \_\_\_\_\_ to clean your saddle.
6. The part of the tack that goes under the horse's belly to hold the saddle on is called the \_\_\_\_\_.
7. The part of the tack that you put your feet into when you are riding in the saddle are called the \_\_\_\_\_.
8. The part of the bridle that you hold when you are riding to steer and stop are called the \_\_\_\_\_.



# CANADIAN PONY CLUB

## STUDY GUIDE

LEVEL "D"

2019

Loyalty

Character

Sportsmanship

### WORD FIND

F	L	A	P	G	I	R	T	H	B
B	D	Z	O	E	C	E	H	E	R
C	E	A	M	B	A	I	R	S	O
N	W	R	M	H	N	N	O	Q	W
M	Q	S	E	A	T	R	A	Y	B
K	C	A	L	D	L	W	T	O	A
B	R	I	D	L	E	S	L	P	N
L	O	Q	Q	Z	L	Q	A	L	D
U	W	X	A	W	R	F	S	M	S
P	N	Z	S	Q	N	W	H	U	A

BROWBAND

THROATLASH

REIN

CROWN

BRIDLE

SEAT

CANTLE

POMMEL

GIRTH

FLAP



# CANADIAN PONY CLUB

## STUDY GUIDE

### LEVEL "D"

2019

Loyalty

Character

Sportsmanship

## LESSON 8

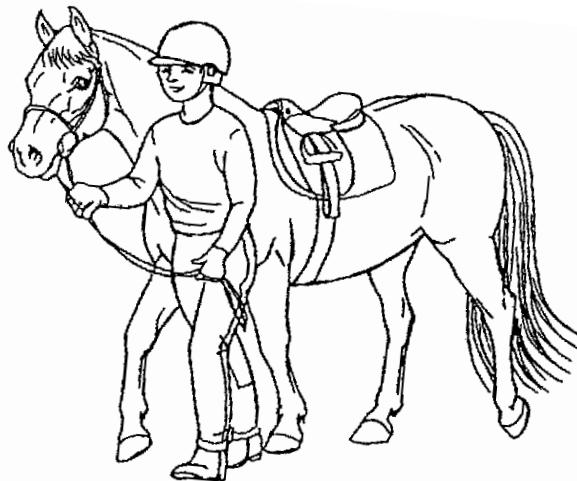
### Riding

#### Topic Outline

You will learn how to ride your pony in your riding lessons. However, there are some things you can learn about before you ride:

1. Before you mount (get on) your pony, you must always check to see:
  - a) that your bridle is on correctly
  - b) that your girth is tight
  - c) that your stirrups are run down
  
2. Immediately after you dismount (get off) you must:
  - a) run up your stirrups
  - b) loosen your girth
  - c) take the reins over the pony's head

After your riding lesson, always lead your pony in hand for a little while to make sure that he is cool. Check to make sure he is not huffing and puffing, or steaming. His chest should feel a normal temperature.





# CANADIAN PONY CLUB

## STUDY GUIDE

LEVEL "D"

**2019**

Loyalty

Character

Sportsmanship

### **Assignment**

1. Right before mounting, you should always:
  - a) brush your pony's mane
  - b) run up your stirrups
  - c) check your girth.
  
2. Right after dismounting, you should:
  - a) Take off the bridle
  - b) Run up your stirrups
  - c) Pick out the pony's feet
  
3. The first thing you do after working your pony should always be:
  - a) Walk him until he is cool
  - b) Give him a big meal
  - c) Put him in the barn
  
4. When riding you should always wear:
  - a) a boot or shoe with a heel
  - b) a properly fitted safety helmet
  - c) both boots and a safety helmet

### True or False

5. You don't have to wear your helmet at Pony Club if you are only going to walk and trot.  
TRUE or FALSE
  
6. You should always check that your girth is tight before mounting. TRUE or FALSE



# CANADIAN PONY CLUB

## STUDY GUIDE

LEVEL "D"

**2019**

Loyalty

Character

Sportsmanship

## LESSON 9

### Colours & Markings

#### Topic Outline

(\*This lesson is an introduction to colours and markings. It is not tested at this level.)

Horses and ponies come in many different colours. Three of the most common colours are:

- Bay A light brown or reddish-brown horse with a black mane and tail, black legs below the knees and hocks, black tips on his ears and black on his muzzle.
- Chestnut A reddish-brown horse whose legs are the same colour as his body. His mane and tail are either the same colour or a little lighter.
- Grey A grey horse has a mixture of black and white hairs. Greys can be light, dark or nearly white.



# CANADIAN PONY CLUB

## STUDY GUIDE

LEVEL "D"

2019

Loyalty

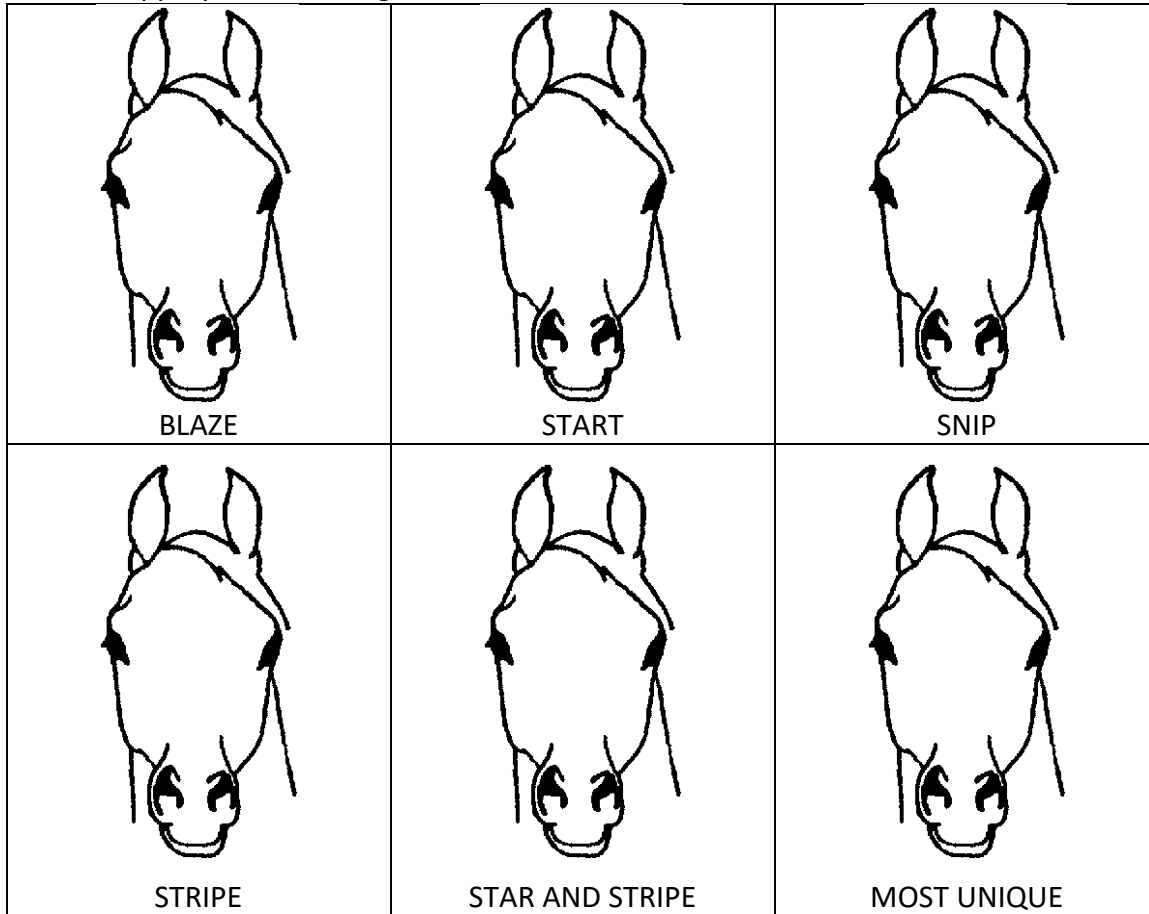
Character

Sportsmanship

### Assignment

#### FACE MARKINGS

1. Draw the appropriate marking on the horse's face.







# CANADIAN PONY CLUB

## STUDY GUIDE

LEVEL "D"

**2019**

---

Loyalty

Character

Sportsmanship

2. EITHER DRAW OR CUT OUT OF A MAGAZINE A HORSE OR PONY OF EACH OF THE FOLLOWING COLOURS:

CHESTNUT



# CANADIAN PONY CLUB

## STUDY GUIDE

LEVEL "D"

**2019**

---

Loyalty

Character

Sportsmanship

BAY



# CANADIAN PONY CLUB

## STUDY GUIDE

LEVEL "D"

**2019**

---

Loyalty

Character

Sportsmanship

GRAY



# CANADIAN PONY CLUB

## STUDY GUIDE

LEVEL "D"

2019

Loyalty

Character

Sportsmanship

Additional practice can be had by working toward some of the beginner badges through the Educational Badge Program.

### MY CHECKLIST

	1 <sup>st</sup> Try	2 <sup>nd</sup> Try	I Can
I know at least 20 parts of the pony			
I can name the parts of the bridle			
I know at least 8 parts of the saddle			
I know 2 reasons to keep my tack clean			
I can clean my bit			
I can put up my bridle			
I can undo my girth			
I can run up my stirrups			
I know my grooming tools			
I know two places ponies can live			
I know what ponies eat			
I know that access to water is very important			
I know something ponies like			
I know something ponies do not like			
I know how ponies keep warm in the winter			
I know how to feed a pony a treat			
I can walk up to my pony			
I can put a halter on a pony			



# CANADIAN PONY CLUB

## STUDY GUIDE

### LEVEL "D"

**2019**

Loyalty

Character

Sportsmanship

	1 <sup>st</sup> Try	2 <sup>nd</sup> Try	I Can
I can lead a pony			
I can tie a Quick Release knot			
I can mount			
I can hold my reins correctly			
I can do exercises at the halt			
I can sit correctly at walk			
I can shorten my reins at halt			
I can turn right or left			
I can go straight across the ring			
I can go from halt to walk			
I can go from walk to halt			
I can keep my pony from getting too close to the other ponies			
I can trot around the ring			
I can walk over trot poles			
I can dismount			
I can run up stirrups			
I can loosen the girth			
I can take the reins over the pony's head			



# CANADIAN PONY CLUB

## STUDY GUIDE

LEVEL "D"

2019

Loyalty

Character

Sportsmanship

### Answer key

#### Home & Habits

##### Topic Outline # 4 – Access to food during the day

- Horse
- Salt Block
- Hay
- Buckets

##### Assignment # 4

- Water
- Shelter
- Good Fences
- Access to Food

#### Feeding

##### Assignment # 3

1. Yes
2. Yes
3. No
4. Yes
5. Yes
6. Hair, Shelter, Blanket

#### Safety, Handling and Care

1. False
2. True
3. True
4. False
5. True
6. True
7. a
8. b
9. b
10. a
11. b



# CANADIAN PONY CLUB

## STUDY GUIDE

LEVEL "D"

2019

Loyalty

Character

Sportsmanship

### **Grooming Tools**

1. dandy brush
2. hoof pick
3. curry comb
4. hoof pick
5. dandy brush
6. curry comb

### **Saddlery**

#### Parts of the Saddle

1. Pommel
2. Seat
3. Cantle
4. Stirrup leathers
5. Girth
6. Skirt
7. Saddle Flap

#### Parts of the Bridle

1. Head/crownpiece
2. browband
3. throatlash/latch
4. cheek piece
5. keeper
6. runner
7. noseband
8. reins
9. bit (eggbutt)

#### Tack Cleaning

1. C
2. bit
3. A
4. be more comfortable, lasts longer, looks better
5. warm water, saddle soap, cloth or sponge
6. girth
7. stirrups
8. reins



# CANADIAN PONY CLUB

## STUDY GUIDE

LEVEL "D"

**2019**

---

Loyalty

Character

Sportsmanship

### **Riding**

1. C
2. b
3. a
4. c
5. False
6. True