



GLOBAL BUILT SOLUTIONS

About Us

Founded by Matt Maher, a Registered Builder in Victoria, to tackle the rising labour and material costs in Australia. Drawing on years of experience, Matt established a vast network of trusted suppliers across Southeast Asia and Europe, offering high-quality, cost-effective construction products throughout AUS.

HOW WE CAN HELP YOU

At Global Built Solutions, we are committed to providing exceptional quality and affordability for doors, windows, stairs, and railings.

Here's how we help you build smarter:

- **Quality:** We supply premium, durable materials that meet the highest industry standards.
- **Customization:** Bespoke designs tailored to suit your project's aesthetics and functionality.
- **Value Engineering:** Strategic sourcing ensures cost savings while maintaining superior craftsmanship.
- **Reliability:** With rigorous quality checks and timely delivery, we ensure a seamless experience for every project.

Aluminum
WINDOW
Catalogue





CASEMENT WINDOW WITH SCREEN

Specification

Thickness	Glass
1.4mm Non-Thermal Break	6+12A+6 insulated clear tempered glass
Hardware brand	SQM (m ²):
Hobo	4.95
Size (inch)	Size (mm)
W - 96	W - 2438.4
H - 80	H - 2032

2,323.89 AUD

SLIM SLIDING DOOR



Specification

Thickness

1.4mm Non-Thermal
Break

Hardware brand
Hobo

Size (inch)
W - 108
H - 96

Glass

6+12A+6
insulated
clear tempered glass

SQM (m²):
6.69

Size (mm)
W - 2438.4
H - 2743.2

2,901.95 AUD



3,413.21 AUD

LOUVER WINDOW

Specification

Thickness	Glass
1.4mm Non-Thermal Break	6+12A+6 insulated clear tempered glass
Hardware brand	SQM (m ²):
Hobo	4.95
Size (inch)	Size (mm)
W - 80	W - 2032
H - 96	H - 2438.4



2,373.27 AUD

SKYLIGHT WINDOW

Specification

Thickness	Glass
1.4mm Non-Thermal Break	6+12A+6 insulated clear tempered glass
Hardware brand	SQM (m ²):
Hobo	0.74
Size (inch)	Size (mm)
W - 24	W - 609.6
H - 48	H - 1219.2



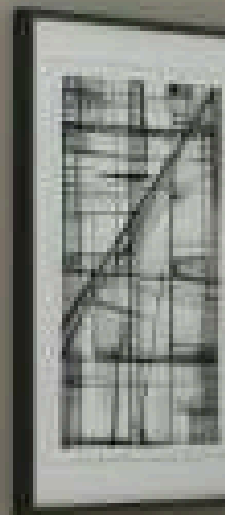
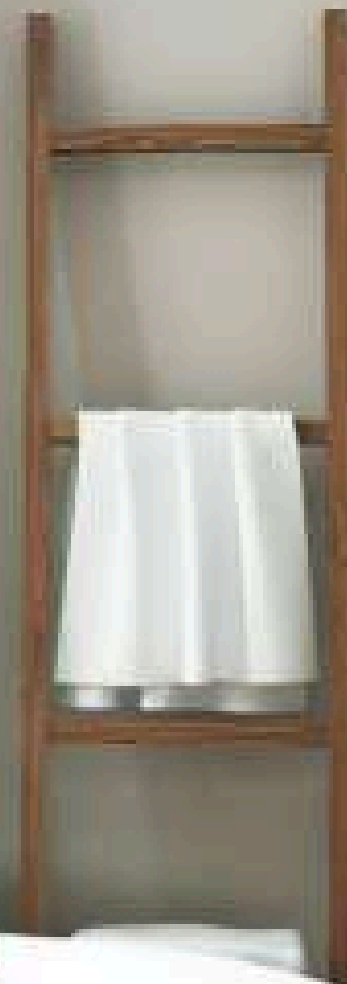
4,557.72 AUD

FOLDING WINDOW

Specification

Thickness	Glass
1.4mm Non-Thermal Break	6+12A+6 insulated clear tempered glass
Hardware brand	SQM (m ²):
Hobo	6.19
Size (inch)	Size (mm)
W - 120	W - 3048
H - 80	H - 2032

FLAT WINDOW
WITH WRAPPED
EDGE





INFORMATION 基础信息

- **Profile wall thickness: 1.4mm**
型材壁厚 : 1.4mm
- **Glass notch: 32mm**
玻璃槽口 : 32mm
- **Adapt to glass: 5+18A+5mm**
适配玻璃 : 5+18A+5mm

OPENING 开启方式



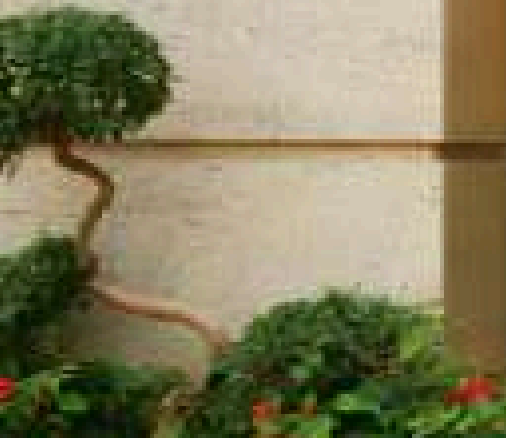
PERFORMANCE 产品性能

Insulation (W/m²k)	1.6>K ≥ 1.3, Grade B	Air tightness (m³/m²h)	3.0>q2>1.5, level 7
Water tightness (pa)	500 ≤ AP<700, level 5	Wind resistance (Kpa)	P3>5.0, level 9
Sound insulation (db)	Rw+Ctr>45, level 7		

CHARACTERISTIC 产品特点

- **Profile material:** Aviation grade special building profiles, high-strength load-bearing
型材材质 : 航空级特种建筑型材, 高强度承重
- **Surface treatment:** Using weather resistant powder fluorocarbon coating, with a 15 year warranty
表面处理 : 采用耐候粉末氟碳喷涂, 质保 15 年
- **Sealant strip:** Standard automotive grade sealing strip (EPDM)
密封胶条 : 标配汽车级密封胶条 (EPDM)

BROKEN
BRIDGE
CASEMENT
WINDOW





INFORMATION 基础信息

- **Profile wall thickness: 1.6mm**
型材壁厚: 1.6mm
- **Glass notch: 32mm**
玻璃槽口: 32mm
- **Adapt to glass: 5+18A+5mm**
适配玻璃: 5+18A+5mm

OPENING 开启方式



PERFORMANCE 产品性能

Insulation (W/m²k)	1.6 > K ≥ 1.3, Grade B	Air tightness (m³/m²h)	3.0 > q2 > 1.5, level 7
Water tightness (pa)	500 ≤ AP < 700, level 5	Wind resistance (Kpa)	P3 > 5.0, level 9
Sound insulation (db)	Rw+Ctr > 45, level 7		

CHARACTERISTIC 产品特点

- **Profile material:** Aviation grade special building profiles, high-strength load-bearing
型材材质: 航空级特种建筑型材, 高强度承重
- **Surface treatment:** Using weather resistant powder fluorocarbon coating, with a 15 year warranty
表面处理: 采用耐候粉末氟碳喷涂, 质保 15 年
- **Sealant strip:** Standard automotive grade sealing strip (EPDM)
密封胶条: 标配汽车级密封胶条 (EPDM)
- **Insulation strip:** Super National Elevated Performance PA66 Fiber Nylon Insulation Strip
隔热条: 超国标高性能 PA66 纤尼龙隔热条
- **Drainage system:** Floor drain drainage structure, fearless of wind and rain, beautiful in appearance
排水系统: 地漏式排水结构, 无惧风雨, 造型美观

BROKEN BRIDGE WINDOW
SCREEN INTEGRATED





INFORMATION 基础信息

- **Profile wall thickness: 1.4/2.0mm**
型材壁厚：1.4/2.0mm
- **Glass notch: 37mm**
玻璃槽口：37mm
- **Adapt to glass: 5+25A+5mm**
适配玻璃：5+25A+5mm

OPENING 开启方式



PERFORMANCE 产品性能

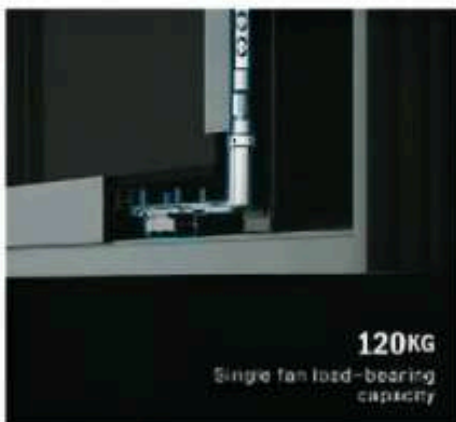
Insulation (W/m^2k)	$1.6 > K \geq 1.3$, Grade B	Air tightness (m^3/m^2h)	$3.0 > q_2 > 1.5$, level 7
Water tightness (pa)	$500 \leq AP < 700$, level 5	Wind resistance (Kpa)	$P_3 > 5.0$, level 9
Sound insulation (db)	$R_w + C_{tr} > 45$, level 7		

CHARACTERISTIC 产品特点

- **Profile material:** Aviation grade special building profiles, high-strength load-bearing
型材材质：航空级特种建筑型材，高强度承重
- **Surface treatment:** Using weather resistant powder fluorocarbon coating, with a 15 year warranty
表面处理：采用耐候粉末氟碳喷涂，质保 15 年
- **Sealing system:** Vertical design of isotherm, injection molding process, high overall flatness of the frame
密封系统：等温线垂直设计，铆钉角码注胶工艺，整框平整度高
- **Insulation strip:** Super National Elevated Performance PA66 Fiber Nylon Insulation Strip
隔热条：超国标高性能 PA66 纤维尼龙隔热条
- **Drainage system:** Floor drain drainage structure, fearless of wind and rain, beautiful in appearance
排水系统：地漏式排水结构，无惧风雨，造型美观

PAN SIDE PRESSURE
SYSTEM WINDOW

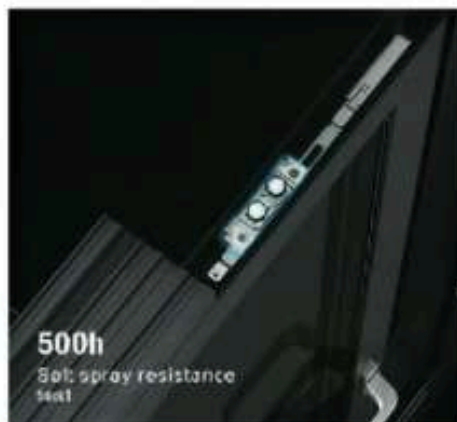




120KG

Single fan load-bearing capacity

Double track pulley
双轨滑轮



500h

Salt spray resistance test

Double wheel anti balance wheel
双轮防摆轮



Central pillar locking point
中柱锁点



Side locking point
侧锁点



Side pressure handle
侧压执手

INFORMATION 基础信息

- **Profile wall thickness: 2.0mm**
型材壁厚：2.0mm
- **Adapt to glass: 5+25A+5mm**
适配玻璃：5+25A+5mm
- **Glass notch: 38mm**
玻璃槽口：38mm

CHARACTERISTIC 产品特点

- **Sealing system:** Tightly sealed and insulated all around
密封系统：四周压紧密封好、保温好
- **Drainage system:** Floor drain drainage structure, fearless of wind and rain, beautiful in appearance
排水系统：地漏式排水结构，不惧风雨，造型美观
- **Hardware accessories:** Comfortable operation, reduces opening and closing force, and easily adjusts tightening force
五金配件：操作舒适，减少启闭力，轻松调节紧力度
- **Optional configuration:** Can be equipped with screen windows, protective grilles, and glass guardrails
可选配置：可装纱窗、防护格栅、玻璃护栏
- **Application space:** The activity fan does not take up space and can open ventilation on a large area
应用空间：活动扇不占空间，可大面积开启通风



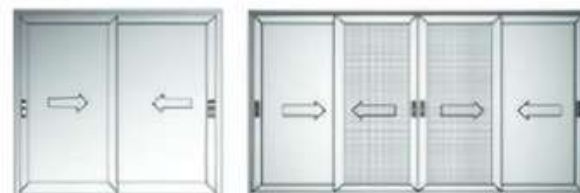
NON BROKEN
BRIDGE SLIDING
WINDOW



INFORMATION 基础信息

- **Profile wall thickness: 1.4mm**
型材壁厚：1.4mm
- **Glass notch: 24mm**
玻璃槽口：24mm
- **Adapt to glass: 5+12A+5mm**
适配玻璃：5+12A+5mm

OPENING 开启方式



SAFETY, ANTI-COLLISION AND ANTI PINCH 安全同行，防撞防夹

- The buffering braking effect is obvious and does not jump;
缓冲制动效果明显，不跳动。
- High load-bearing performance, can withstand up to 80KG;
承重性能高，最大可承受 80KG。
- Smooth and smooth sliding, silent, anti pinch, and long service life.
滑动平稳顺畅、静音、防夹手、使用寿命长。

CHARACTERISTIC 产品特点

- Using weather resistant powder fluorocarbon spraying, with a weather resistant warranty of 15 years
采用耐候粉末氟碳喷涂，耐候质保 15 年
- Arc line design, simple and beautiful
圆弧线设计，简洁又美观
- Hollow aluminum strip integrated bending process for better sealing
中空铝条一体折弯工艺，更密封
- Anti fall, strong load-bearing capacity
防坠落，承重力强
- Install anti-theft adhesive blocks on top and bottom, making anti-theft and waterproof
上下加装防盗胶块，防盗更防水



HEAVY DUTY SLIDING DOOR



INFORMATION 基础信息

- **Profile wall thickness: 2.0mm**
型材壁厚: 2.0mm
- **Glass notch: 32mm**
玻璃槽口: 32mm
- **Adapt to glass: 5+20A+5mm**
适配玻璃: 5+20A+5mm

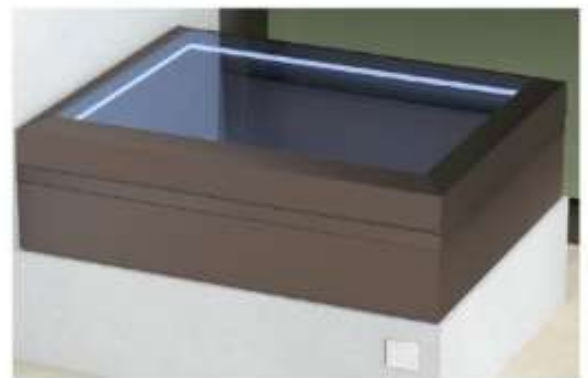
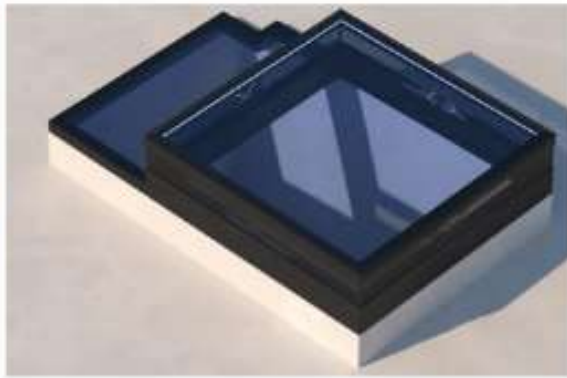
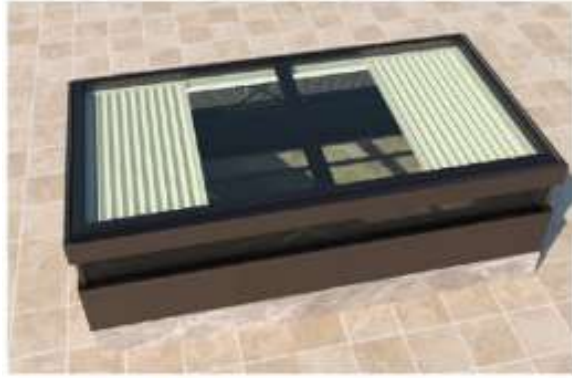
OPENING



CHARACTERISTIC 产品特点

- **High and low rail drainage, perfect sealing structure design, strong wind pressure resistance**
高低轨排水, 完善的密封结构设计, 抗风压性强
- **Equipped with sealing strips and wool strips, effectively preventing rainwater from entering the room**
配有密封胶条、毛条, 有效防止雨水进入室内





THE GLOBAL BUILT SOLUTIONS PROCESS

Expert Services at Your Doorstep

Step-by-Step Process: How We Work with Clients to Maximise Cost Savings

1. Project Concept

- **Initial Consultation:** Understand the client's vision and requirements (e.g., custom staircases, architectural windows, or feature railings).
- **Material Sourcing:** Leverage global partnerships to provide top-tier doors, windows, stairs, and railings at competitive prices.

2. Design Consultation

- **Collaboration:** Partner with designers and architects to align our product offerings with your design intent.
- **Customization:** Explore a variety of styles, finishes, and materials to suit your project's unique needs.

3. Budget Review

- **Cost Analysis:** Identify opportunities for cost efficiency in product selection.
- **Value Engineering:** Recommend alternative materials or designs that maintain aesthetics while reducing costs.

4. Product Pricing and Quoting

- **Transparent Quotes:** Provide detailed pricing for all doors, windows, stairs, and railings.
- **Sample Approvals:** Supply physical samples to ensure client satisfaction with the selected materials and finishes.

5. Manufacturing and Quality Control (45 Days)

- **Shop Drawing Reviews:** Confirm technical specifications for custom orders.
- **Quality Inspections:** Conduct thorough checks to guarantee product durability and precise craftsmanship.

6. Shipping and Delivery (15 Days)

- **Logistics Coordination:** Ensure timely and efficient delivery of products to your site.
- **On-Site Delivery:** All products are delivered ready for installation, avoiding delays.

FREQUENTLY ASKED QUESTIONS

1. Are your doors, windows, stairs, and railings customizable?

- Yes, we offer fully customizable solutions to meet your design and functional needs.

2. What quality standards do you follow?

- Our products undergo rigorous quality checks to meet international safety and design standards.

3. What is the lead time for orders?

- Typically, manufacturing takes 45 days, with an additional 15 days for shipping and delivery.

4. Can I get a detailed project quotation?

- Certainly! Contact us with your project details, and we'll provide a transparent and itemized quotation.



Thank You for Choosing Global Built Solutions

We appreciate your interest in our services and look forward to assisting you with your next project. Please reach out to us for any inquiries or support.

WE BUILD YOUR VISION, ONE DESIGN AT A TIME.

Contact Information
Phone: 1300 670 920

Builders Licenses
VIC Lic No. CDB-U 62979
QLD Lic No. QBCC 5345251

Business Details
ABN: 92 977 967 854
ACN: 627 645 676



<https://gbs-aus.com/>