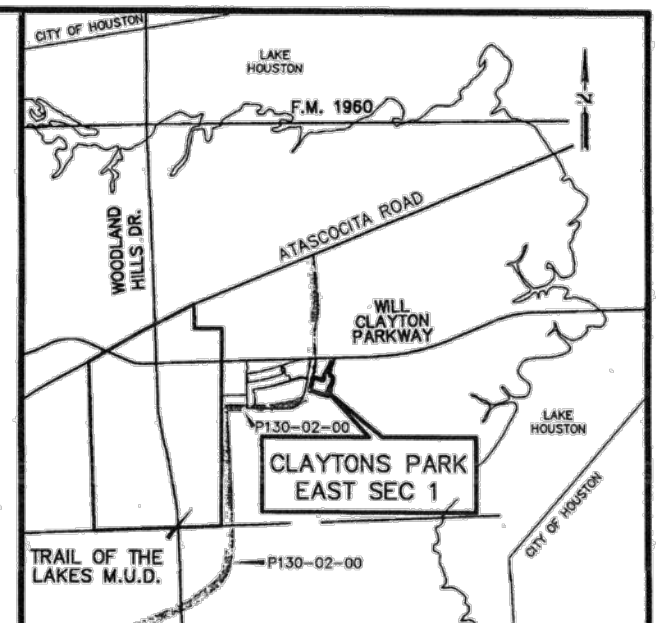
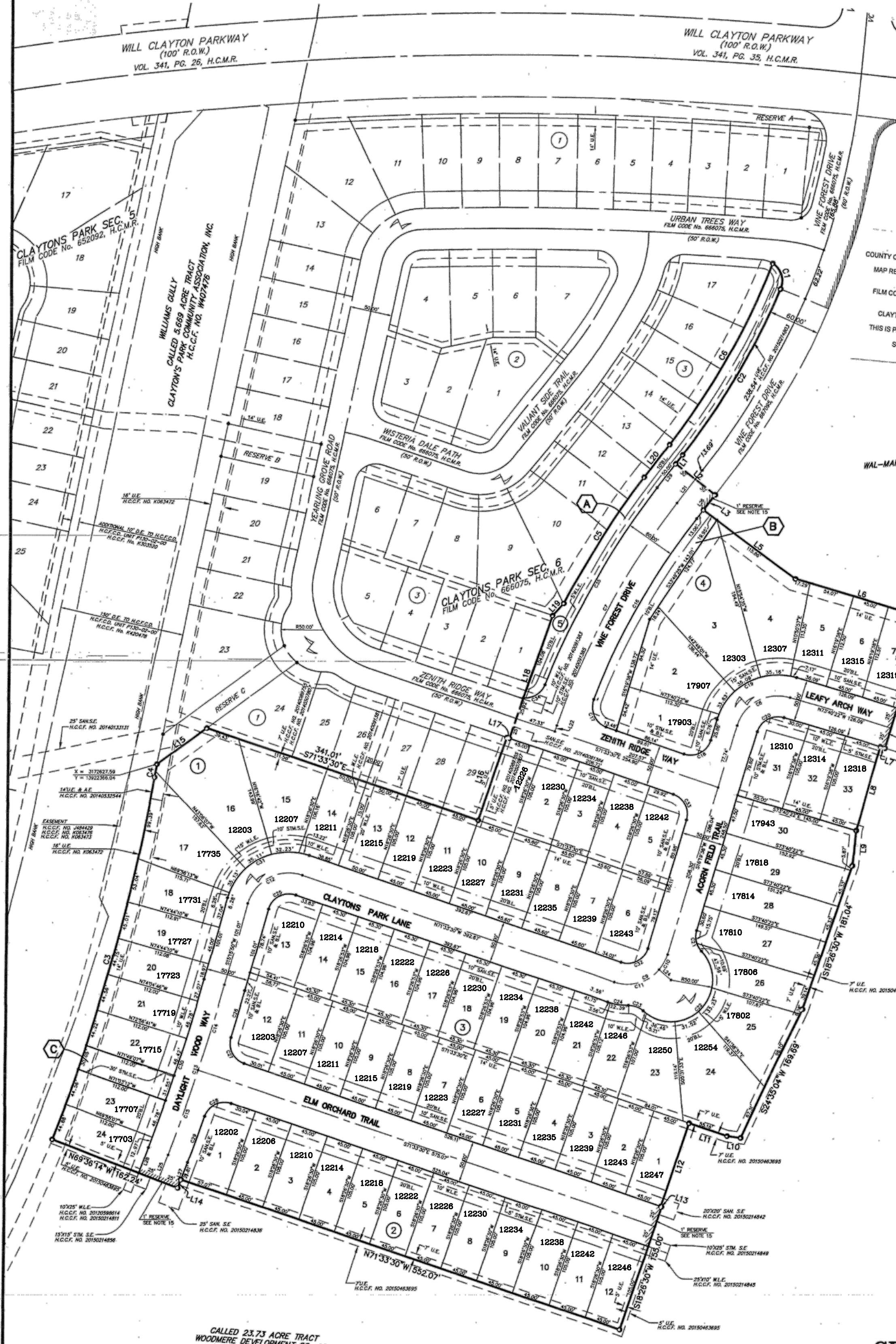
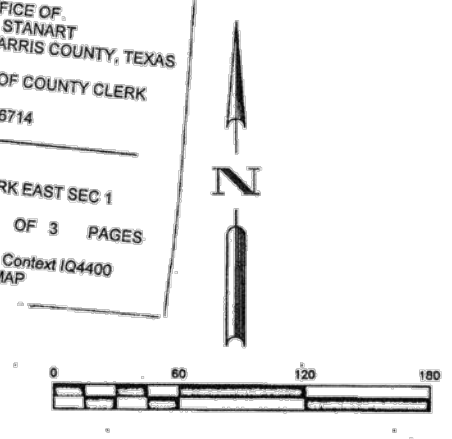


20150562044 FILED
 12/15/2015 2:56 PM
 Ste. Stuart
 COUNTY CLERK



VICINITY MAP
 N.T.S.
 KEY MAP: 377A

OFFICE OF
 COUNTY CLERK, HARRIS COUNTY, TEXAS
 MAP RECORDS OF COUNTY CLERK
 FILM CODE 878714
 CLAYTONS PARK EAST SEC 1
 THIS IS PAGE 1 OF 3 PAGES
 SCANNER Control 104400
 KEY MAP



CALLED 2.043 ACRES
 WAL-MART REAL ESTATE BUSINESS TRUST
 H.C.C.F. NO. 20140213712

CALLED 23.73 ACRE TRACT
 WOODCREST DEVELOPMENT CO.,
 H.C.C.F. NO. 20120508014

NUMBER	BEARING	DISTANCE
L1	S 37°48'00" E	13.69
L2	S 25°15'41" E	50.00
L3	S 37°48'00" W	23.17
L4	N 0°18'00" E	135.81
L5	S 23°16'00" E	135.81
L6	N 73°40'22" W	8.09
L7	N 18°54'00" W	105.00
L8	S 05°15'00" W	43.22
L9	N 82°50'30" W	16.00
L10	N 71°33'30" W	47.91
L11	S 89°30'00" W	105.00
L12	N 71°33'30" E	11.07
L13	S 20°53'46" W	10.32
L14	N 33°51'41" E	73.82
L15	N 18°28'30" E	105.00
L16	N 18°28'30" E	155.00
L17	N 71°33'30" E	13.50
L18	N 18°28'30" E	155.00
L19	N 41°44'00" E	16.16
L20	N 37°48'00" E	50.00
L21	S 37°48'00" W	26.32
L22	S 18°26'30" W	7.40
L23	S 37°48'00" E	19.01
L24	S 20°53'46" W	32.22
L25	S 37°48'00" W	36.32
L26	S 20°53'46" W	12.52
L27	S 30°23'45" E	12.52
L28	N 20°23'45" E	32.52
L29	N 37°48'00" E	32.52

NUMBER	RADIUS (FT)	DELTA ANGLE	ARC DISTANCE (FT)	CHORD BEARING	CHORD DISTANCE (FT)
C01	25.00	179°17'33"	34.59	S 17°02'48" E	31.90
C02	870.00	125°11'09"	34.59	N 30°12'20" E	228.81
C03	2250.01	117°21'18"	400.47	N 15°28'20" E	449.72
C04	1486.01	107°07'22"	16.07	N 00°48'30" E	14.57
C05	800.00	107°00'30"	179.71	N 32°22'26" E	179.45
C06	800.00	107°00'30"	240.91	N 32°22'26" E	240.88
C07	800.00	107°00'30"	304.11	N 32°22'26" E	302.68
C08	800.00	107°00'30"	367.31	N 32°22'26" E	365.11
C09	800.00	107°00'30"	430.51	N 32°22'26" E	428.24
C10	800.00	107°00'30"	493.71	N 32°22'26" E	491.44
C11	800.00	107°00'30"	556.91	N 32°22'26" E	554.11
C12	800.00	107°00'30"	620.11	N 32°22'26" E	617.31
C13	800.00	107°00'30"	683.31	N 32°22'26" E	680.51
C14	800.00	107°00'30"	746.51	N 32°22'26" E	743.71
C15	800.00	107°00'30"	809.71	N 32°22'26" E	806.91
C16	800.00	107°00'30"	872.91	N 32°22'26" E	870.11
C17	800.00	107°00'30"	936.11	N 32°22'26" E	933.31
C18	800.00	107°00'30"	999.31	N 32°22'26" E	996.51
C19	800.00	107°00'30"	1062.51	N 32°22'26" E	1059.71
C20	800.00	107°00'30"	1125.71	N 32°22'26" E	1122.91
C21	800.00	107°00'30"	1188.91	N 32°22'26" E	1186.11
C22	800.00	107°00'30"	1252.11	N 32°22'26" E	1249.31
C23	800.00	107°00'30"	1315.31	N 32°22'26" E	1312.51
C24	800.00	107°00'30"	1378.51	N 32°22'26" E	1375.71
C25	800.00	107°00'30"	1441.71	N 32°22'26" E	1438.91
C26	800.00	107°00'30"	1504.91	N 32°22'26" E	1502.11
C27	800.00	107°00'30"	1568.11	N 32°22'26" E	1565.31
C28	800.00	107°00'30"	1631.31	N 32°22'26" E	1628.51
C29	800.00	107°00'30"	1694.51	N 32°22'26" E	1691.71
C30	800.00	107°00'30"	1757.71	N 32°22'26" E	1754.91
C31	800.00	107°00'30"	1820.91	N 32°22'26" E	1818.11
C32	800.00	107°00'30"	1884.11	N 32°22'26" E	1881.31
C33	800.00	107°00'30"	1947.31	N 32°22'26" E	1944.51
C34	800.00	107°00'30"	2010.51	N 32°22'26" E	2007.71
C35	800.00	107°00'30"	2073.71	N 32°22'26" E	2070.91

RESERVE	ACREAGE / SQUARE FOOTAGE	RESTRICTION
A	0.2231 AC./ 11,099 S.F.	COMPENSATING OPEN SPACE
B	0.7711 AC./ 7,455 S.F.	COMPENSATING OPEN SPACE
C	0.0792 AC./ 3,450 S.F.	LANDSCAPE / OPEN SPACE / DRAINAGE

CLAYTONS PARK EAST SEC 1

A SUBDIVISION OF 13.24 ACRES OF LAND
 OUT OF THE E. P. RUIHL SURVEY, A-657
 HARRIS COUNTY, TEXAS

LOTS: 76 RESERVES: 3 BLOCKS: 5
 SCALE: 1"=60' DATE: AUGUST, 2015

OWNER:
 WOODCREST DEVELOPMENT CO., LTD.
 A TRUST LIMITED PARTNERSHIP
 15015 KATY FREEWAY, SUITE 405
 HOUSTON, TEXAS 77064
 (281) 646-1127

LAND PLANNER:
 ROBERT DOLEY
 2105 NORTH PARK CT.
 PASKARENA, TEXAS 77602
 (713) 943-7702

Brown & Gay Engineers, Inc.
 10771 Westheimer, Suite 400, Houston, TX
 Tel: 281-558-8700 • www.browngay.com
 TSPS Registration No. 1-1040
 TSPS Licensed Surveying Firm No. 101