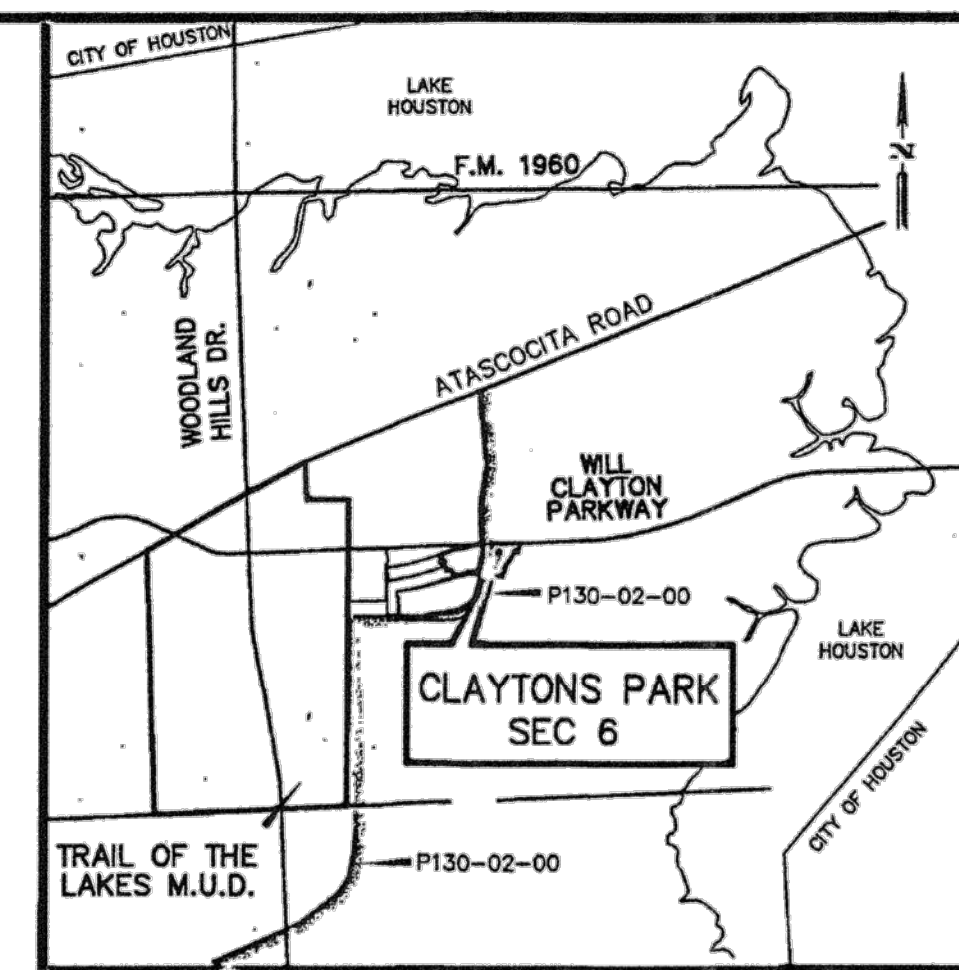
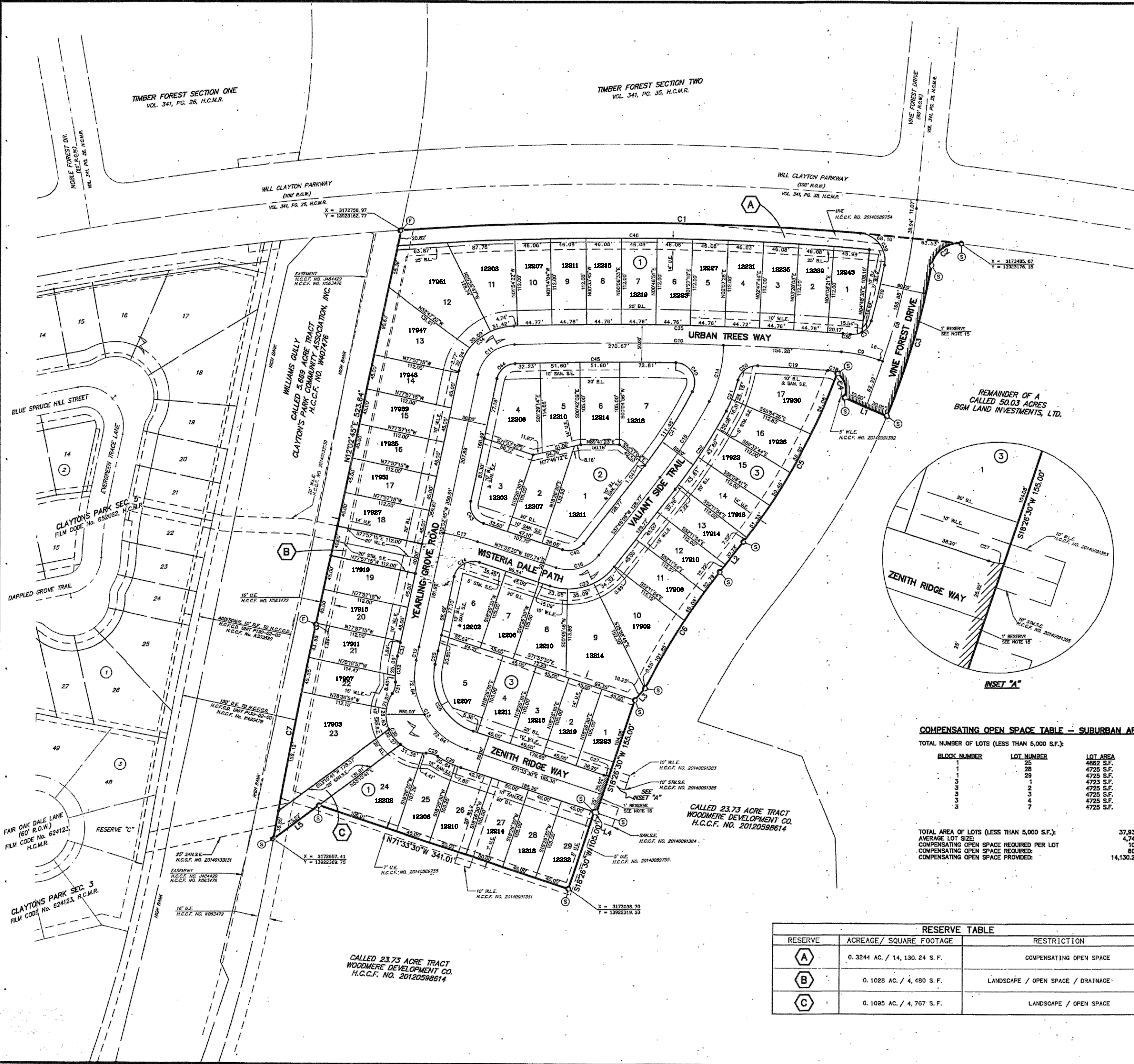


20140322685
7/23/2014 11:01 AM \$110.00
FILED
7/23/2014 12:44 PM
Stan Stant
COUNTY CLERK

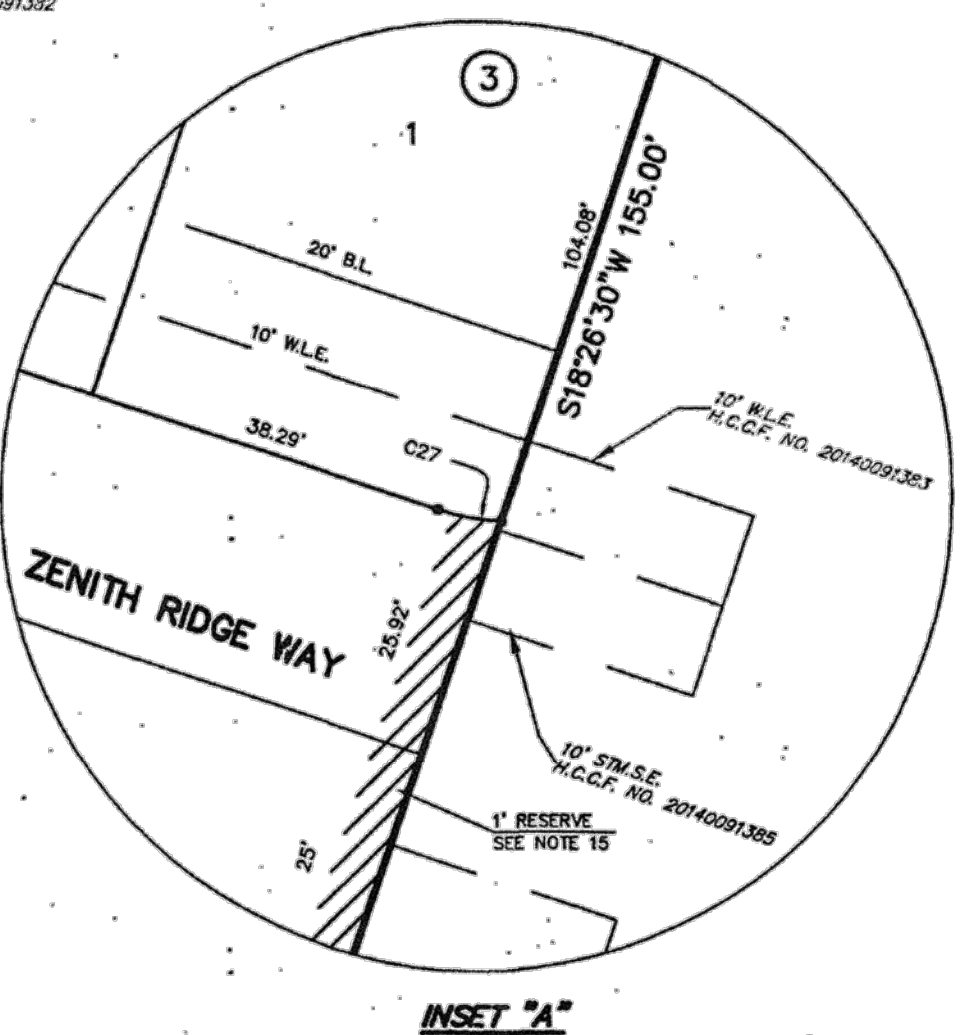


VICINITY MAP
N.T.S.
KEY MAP: 377A



CURVE DATA					
NUMBER	RADIUS (FT.)	DELTA ANGLE	ARC DISTANCE (FT.)	CHORD BEARING	CHORD DISTANCE (FT.)
C1	3950.00	10°33'27"	727.85	S 88°43'14" E	728.52
C2	35.00	86°29'10"	52.83	S 53°16'54" W	47.96
C3	930.00	12°34'38"	204.15	S 16°19'38" W	203.74
C4	25.00	79°17'32"	34.60	N 17°01'49" W	31.90
C5	850.00	16°50'31"	249.86	S 29°22'51" W	248.96
C6	950.00	10°50'20"	179.71	S 32°22'56" W	178.45
C7	7496.81	02°10'11"	283.89	N 10°57'40" E	283.89
C8	900.00	14°31'16"	228.10	S 15°21'19" W	227.49
C9	200.00	141°2'47"	49.61	N 78°27'08" W	49.49
C10	3793.00	06°25'09"	424.94	N 88°46'04" W	424.72
C11	50.00	75°58'37"	66.30	S 50°02'03" W	61.55
C12	7359.81	00°08'26"	18.05	S 11°58'32" W	18.05
C13	100.00	83°27'49"	145.67	S 29°49'35" E	133.13
C14	150.00	28°40'07"	75.05	S 14°05'51" W	74.27
C15	713.00	08°22'13"	116.60	S 33°07'00" W	116.47
C16	50.00	70°38'24"	61.65	S 73°07'18" W	57.81
C17	400.00	06°22'45"	44.53	N 74°44'52" W	44.51
C18	25.00	28°06'55"	12.70	N 71°4'03" W	12.57
C19	3768.00	01°24'18"	92.40	N 86°29'39" W	92.40
C20	25.00	77°56'44"	34.01	S 53°49'50" W	31.45
C21	175.00	13°42'26"	41.46	S 21°38'41" W	41.36
C22	738.00	09°22'13"	120.69	S 33°07'00" W	120.56
C23	75.00	70°38'24"	92.47	S 73°07'18" W	86.72
C24	25.00	96°23'45"	42.06	S 60°14'37" W	37.27
C25	7334.81	00°08'26"	17.99	S 11°58'32" W	17.99
C26	75.00	83°27'49"	109.25	S 29°49'35" E	99.85
C27	25.00	15°45'11"	6.80	S 79°20'55" E	6.78
C28	125.00	15°20'51"	33.48	N 63°53'04" W	33.38
C29	25.00	36°20'10"	15.85	N 74°22'44" W	15.59
C30	50.00	125°26'27"	109.47	N 29°49'35" E	88.88
C31	25.00	36°20'10"	15.85	N 14°43'33" W	15.59
C32	125.00	15°20'51"	33.48	N 04°13'54" E	33.38
C33	7384.81	00°08'26"	18.11	N 11°58'32" E	18.11
C34	75.00	79°58'37"	99.45	N 50°02'03" W	92.33
C35	3818.00	06°25'09"	427.74	S 88°46'04" E	427.52
C36	225.00	02°29'38"	9.79	S 84°18'41" E	9.79
C37	25.00	81°19'08"	35.48	N 56°16'34" E	32.58
C38	670.00	04°52'50"	74.11	N 13°10'35" E	74.09
C39	35.00	96°07'15"	58.72	N 37°19'27" W	52.07
C40	25.00	117°4'33"	51.16	S 30°11'22" E	42.89
C41	688.00	09°22'13"	112.52	S 33°07'00" W	112.38
C42	25.00	70°38'24"	30.82	S 73°07'18" W	28.91
C43	25.00	83°36'15"	36.48	N 29°45'22" W	33.33
C44	25.00	75°58'37"	33.15	N 50°02'03" E	30.78
C45	3768.00	03°09'59"	208.24	N 89°36'21" E	208.21
C46	3930.00	08°55'35"	612.28	N 89°39'13" W	611.66

LINE DATA		
NUMBER	BEARING	DISTANCE
L1	N 67°23'03" W	60.00'
L2	S 37°48'08" W	50.00'
L3	S 41°44'02" W	19.78'
L4	N 71°33'50" W	3.20'
L5	S 53°10'41" W	73.22'
L6	N 71°20'42" W	5.41'



COMPENSATING OPEN SPACE TABLE - SUBURBAN AREA

TOTAL NUMBER OF LOTS (LESS THAN 5,000 S.F.): 8

BLOCK NUMBER	LOT NUMBER	LOT AREA
1	25	4862 S.F.
1	28	4725 S.F.
1	29	4725 S.F.
3	1	800 S.F.
3	2	4725 S.F.
3	3	4725 S.F.
3	4	4725 S.F.
3	7	4725 S.F.

TOTAL AREA OF LOTS (LESS THAN 5,000 S.F.): 37,935 S.F.
 AVERAGE LOT SIZE: 4,742 S.F.
 COMPENSATING OPEN SPACE REQUIRED PER LOT: 100 S.F.
 COMPENSATING OPEN SPACE PROVIDED: 14,130.24 S.F.

OFFICE OF STAN STANT
 COUNTY CLERK, HARRIS COUNTY, TEXAS
 MAP RECORDS OF COUNTY CLERK
 FILM CODE 666075
 CLAYTONS PARK SEC 6
 THIS IS PAGE 1 OF 3 PAGES
 SCANNER Context IQ4400
 KEY MAP

CLAYTONS PARK SEC 6

A SUBDIVISION OF 10.06 ACRES OF LAND
 OUT OF THE E. P. RUHL SURVEY, A-657
 HARRIS COUNTY, TEXAS

LOTS: 53 RESERVES: 3 BLOCKS: 3
 SCALE: 1"=60' DATE: JUNE, 2014

OWNER:
 WOODMERE DEVELOPMENT CO., LTD.
 A TEXAS LIMITED PARTNERSHIP
 16915 KATY FREEWAY, SUITE 405
 HOUSTON, TEXAS 77094
 (281) 646-1127

LAND PLANNER:
 ROBERT DOLEY
 2103 NORTH PALM CT.
 PASADENA, TEXAS 77502
 (713) 943-7702

Brown & Gay Engineers, Inc.
 10777 Westheimer, Suite 400, Houston, TX 77042
 Tel: 281-558-8700 Fax: 281-558-9701
 Civil engineers and surveyors
 TBPE Registration No. F-1046
 TBPLS Licensed Surveying Firm No. 101605-00

RESERVE TABLE		
RESERVE	ACREAGE/ SQUARE FOOTAGE	RESTRICTION
A	0.3244 AC. / 14,130.24 S.F.	COMPENSATING OPEN SPACE
B	0.1028 AC. / 4,480 S.F.	LANDSCAPE / OPEN SPACE / DRAINAGE
C	0.1095 AC. / 4,767 S.F.	LANDSCAPE / OPEN SPACE