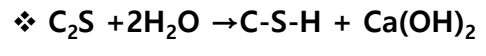
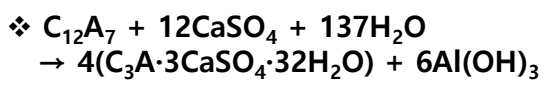
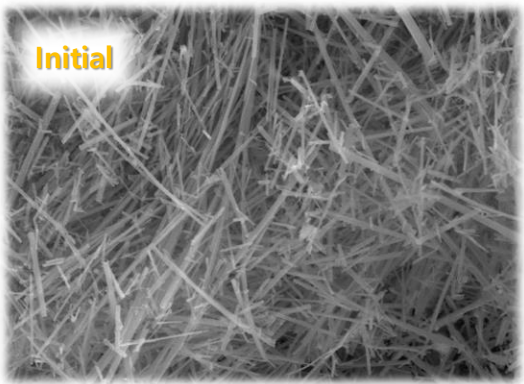


ACEMENT

Summary

ACEMENT is rapid hardening cement comprised of Ecomaterials' CAC (Calcium Aluminate Composite) and plaster. Ettringite is formed in the initial stages of curing, allowing for strength development within a short time. C-S-H gel then forms over a longer period of time to add long-term strength to the concrete.



Applications



Complement mortar



Emergency Maintenance



Shotcrete

Chemical Characteristic

CaO	Al ₂ O ₃	SiO ₂	Fe ₂ O ₃	MgO	SO ₃	Na ₂ O	K ₂ O
38.9	20.0	22.7	1.01	4.72	8.20	0.64	0.09

Physical Characteristic

Density (g/cm ³)	specific surface area (cm ² /g)	Setting time (Vicat test)	
		Initial setting (min)	Final setting (min)
2.85	5,250	8	11

Compression strength(MPa)				
3hr	1day	3day	7day	28day
35.4	46.8	59.6	64.5	72.4

❖ W/C=0.4, C:S=1:3

