

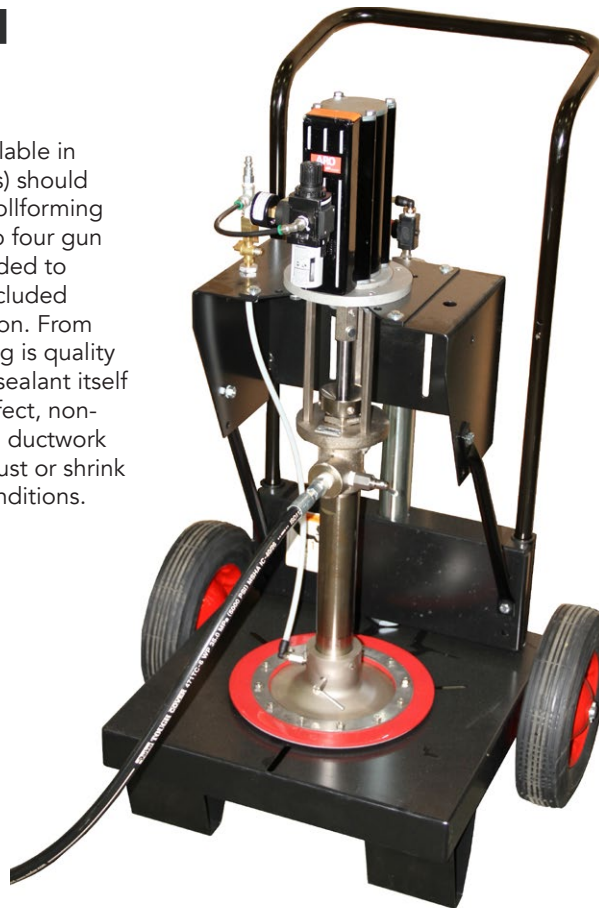
## EASY EDGER (MANUAL)

Turn perfect flanges on elbows or other curved fittings as fast as you can notch them. No gauge to set. Hand clamps to any bench. Available with or without stand. 20 gauge maximum.

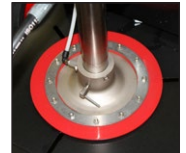


## COLD SEALANT SYSTEM [5 OR 55 GALLON]

These portable cold sealant units (available in both 5-gallon and fixed 55-gallon sizes) should be factory installed to all Lockformer rollforming machines and are available with one to four gun systems. Optical eye triggers are included to adjust flow. Snuffer devices are also included to eliminate leaks in the shut-off position. From pump assemblies to nozzles, everything is quality engineered for top performance. The sealant itself is specially formulated to produce perfect, non-toxic, flame-retardant sealing beads to ductwork in-shop or on-site. Beads that won't crust or shrink – even under extreme temperature conditions.



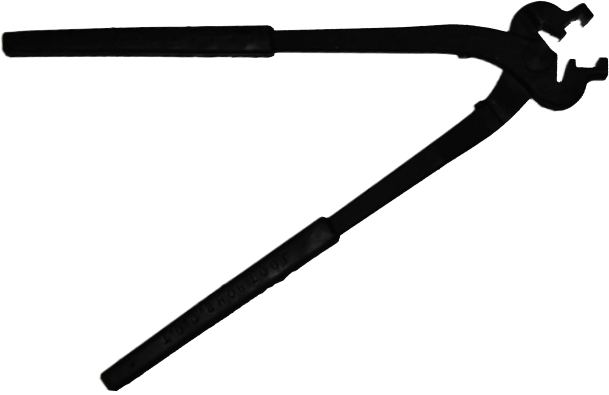
Model Details



MODEL	CAPACITY	DEPTH OF POCKET/SIZE	OTHER
EASY EDGER	20 gauge galvanized	1/4" flange	Optional stand
COLD SEALANT SYSTEM	N/A	N/A	Optical eye included

### TDC®/TDF® CLIP TOOL

This specially designed and engineered Clip Tool makes effortless work out of the installation of 6" TDC® or TDF® SMACNA specified clips. Snapping the clips into place with pliers or channel locks can damage the clip and compromise the rigid binding integrity of the TDC®/TDF® joint. [Model L535950]



### TDC®/TDF® CORNER CLEAT WRENCH

When manually inserting corners with a hammer, take the necessary next step to insure that the corners are securely held in place with the TDC®/TDF® Corner Tool. The process is effortless and uniformly bends the TDC®/TDF® flange over the inserted corner so that no corners are lost in shipment and/or during field installation. [Model A-1]

### GALV-OFF (PER CASE)

There is simply no better product to soften and dissolve galvanize build-up on forming rolls and press dies.

Galv-Off has been used by metal fabricators around the world to keep precision rollformers from advanced roll wear and tooling damage.

Do not use common off-the-shelf lubricants on your machines. These paraffin based products actually attract dirt, grime and galvanized particles! Galv-Off is specially formulated to lubricate as it cleans. The spray nozzle has been developed to deliver an accurate and precise coating so you don't waste any. Handy 12 oz. aerosol size cans come in cases of 12. SDS (formerly MSDS) sheet provided.



12 cans per case



12 ounce aerosol size

**SPEED**

N/A

**MOTOR/VOLTAGE**

N/A

**DIMENSIONS/WEIGHT**

Width - 4"  
Height - 18" with stand  
Weight - 23 lbs.

Rollformer speeds limited to 65 feet per minute on per-cut length

115 volts, 60 cycle, single phase, Air= 100 psi

Length - 24"  
Width - 28"  
Passline - 34"  
Weight - 175 lbs. (5 Gal System)  
300 lbs. (55 Gal System)