

ROPER  WHITNEY.®

No. 5 Jr. Hand Punch



USA  MADE



No. 5 Jr. Hand Punch

Light Duty Portable Punches are for limited punching power (1.2 tons or less). They are easy to carry in a pocket, on a belt or in a tool box. Hardened, machined bearing surfaces are used on this tool to provide dependable long life within the rated capacity.



- Maximum rated capacity: * 1.2 tons
- Smallest available
- Hand operation
- Adjustable stop gauge

The No. 5 Jr. punch has a standard 1 3/4-inch throat depth has an optional mounting base. The No. 5 is also available as a kit with a standard assortment of round punches and dies in a durable plastic box. The standard No. 5 kit includes one 3/32", 1/8", 5/32" 3/16", 7/32", 1/4" and 9/32" round punch and die.

NO. 5 JUNIOR HAND PUNCH

1 Ton of Punching Power 1/4" Hole thru 16 Gauge Mild Steel

The No. 5 Jr. includes one 3/16" round punch and die. No substitutions on punches and dies furnished unless 12 or more tools ordered.



NO. 5 JR. Bench Mounting Base



NO. 5 JUNIOR KIT HAND PUNCH

The No. 5 Jr. can be purchase in a kit including: punch, case, one each 3/32", 1/8", 5/32", 3/16", 7/32", 1/4", 9/32" round punches and dies. No substitutions on punches and dies furnished in KIT unless 12 or more tools ordered.

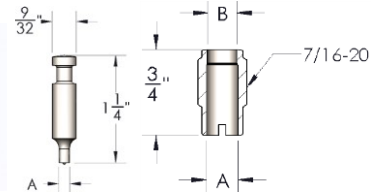


Model	Catalog No.	Description	Capacity (Tons)	Throat Depth (in.)	Shipping Weight
5 Jr.	130010050	Hand-Punch Only	1.2	1-3/4	2-3/4 lbs
	135010050	5 Jr. Hand Punch Kit			4 lbs
	139010050	5 Jr. Bench Mounting Base			3/4 lbs



USA MADE

**TYPE O Round Punches and Dies
Standard Sizes**



Fractional, Drill, or Millimeter A	Decimal Equiv. A	Punch Part Number	Die Part Number	Set Part Number
1/16	0.063	300050063	310050063	200050063
5/64	0.078	300050078	310050078	200050078
3/32-42 DS	0.094	300050094	310050094	200050094
7/64	0.109	300050109	310050109	200050109
1/8	0.125	300050125	310050125	200050125
30 DS	0.129	300050129	310050129	200050129
9/64-28 DS	0.141	300050141	310050141	200050141
5/32	0.156	300050156	310050156	200050156
11/64	0.172	300050172	310050172	200050172
3/16	0.188	300050188	310050188	200050188
13/64	0.203	300050203	310050203	200050203
7/32	0.219	300050219	310050219	200050219
15/64-A DS	0.234	300050234	310050234	200050234
1/4-E DS	0.250	300050250	310050250	200050250
17/64-H DS	0.266	300050266	310050266	200050266
9/32-K DS	0.281	300050281	310050281	200050281

MIN. A: 0.031
MAX. A: 0.281



Size Range			
A	0.063 – 0.109		
A	0.110 – 0.281		

Under 0.063 add 50% to Non Stock P&D

**TYPE M Obround Punches and Dies
STANDARD SIZES**



Fractional Size A x B	Decimal Equiv. A x B	Punch Part Number	Die Part Number
1/8 x 1/4	0.125 x 0.250	301050816	311050816
1/8 x 9/32	0.125 x 0.281	301050818	311050818



Size Range		
0.095 – 0.281		

Width sizes under 0.063 add 50% to the punch and die.
Width sizes 0.63 thru 0.094 add 30% to the punch & die.

