

ROPER  WHITNEY.®

**No. 8 Medium Duty
Portable Punch**



USA  MADE



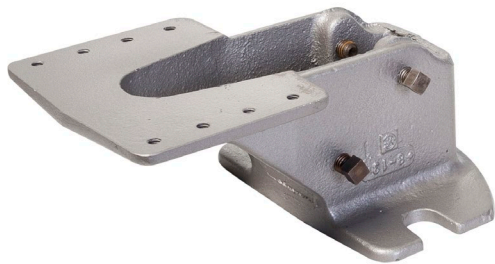
USA  MADE

No. 8 Medium Duty Portable Punch

The No. 8 punch has a capacity of a 1/4" hole through 1/4" plate. Unlike other similar tools, this punch will punch and strip inside a 90° arc movement of the lever and the upper handle will not disengage when moved to either extreme. Includes one 9/32" round punch and die set. Maximum Rated Capacity is 5 ton



Options include a bench mounting base, with a 3" - 3" 3/4" x 5" tapped base table; and a factory reversal of the upper handle to provide front pull-down operation when the tool's intended use is as a bench mounted unit.



Bench Mount Base

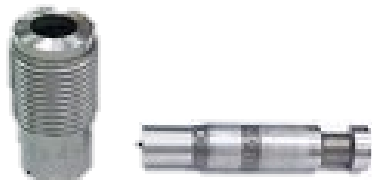


No. 8 Mounted in Base











USA  MADE

| ORDERING GUIDE | CATALOG NO. | SHIPPING WEIGHT |
|---------------------|-------------|-----------------|
| | No. 8 | No. 8 |
| Medium Duty Punch | 130020080 | 17-1/2 |
| Bench Mounting Base | 139020080 | 8-1/2 |



No. 8 Type "O" Round Punch & Die

| | Type O | Type M | Type N | Type P | Type R | Type S | Type T | Type D |
|-------|---|---|---|---|---|---|---|---|
| |  |  |  |  |  |  |  |  |
| No. 8 | 1/16 – 1/2 | 1/8 x 3/16- 7/16 x 1/2 | 1/8 x 3/16- 5/16 x 3/8 | 1/8 x 3/16- 7/16 x 1/2 | 1/8 – 11/32 | 3/16 – 13/32 | 3/16 – 13/32 | 3/8 x 1/8- 1/2 x 7/16 |