

ROPER  WHITNEY.



AUTOMAX

AM2116



USA  MADE



AM2116 Long Folding System with Optional Slitter

ROPER  WHITNEY.

has been producing quality folding systems for a variety of markets. Building on that experience, the AutoMax integrates advanced design with the features that have made the AutoMax the choice of professionals.

The AutoMax combines automated bending of angles up to 147 degrees, material clamping, and material support into a single CNC controlled system employing wing bending techniques.

Benefits of the AutoMax system vs. press brake bending are:

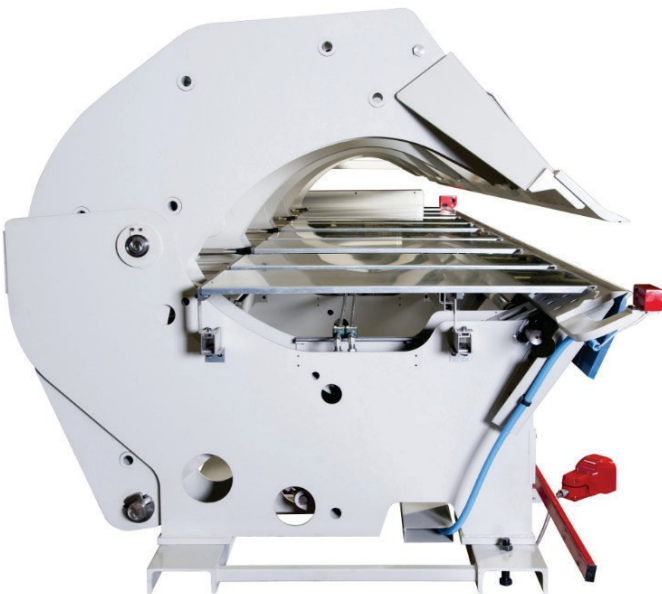
- Reduced labor costs
- Improved part accuracy
- Reduced setup time
- Minimized tool changes
- Improved part quality especially on soft and pre-painted material

AUTOMAX | 2116



AMP2116 Long Folding System

The AutoMax is a plate and weldment designed machine, delivering superior performance and features. The curved design of the “C” frame gives this machine a rigid foundation while reducing stress points seen in competitive makes. The linkages of the AutoMax are located within the “C” frame structure. This design improves machine rigidity and bending performance.

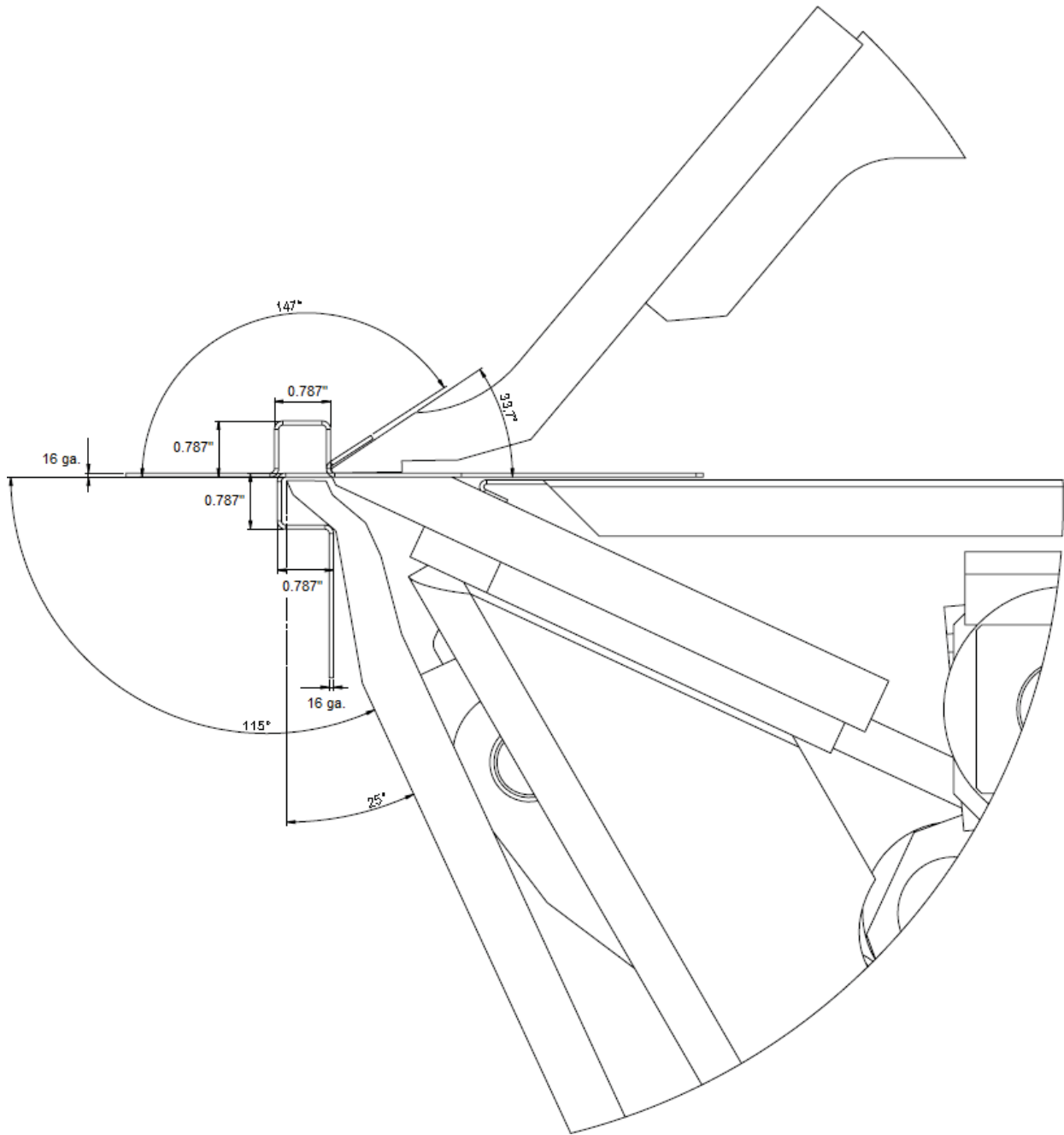


The hydraulic unit is controlled by a high speed frequency inverter. The inverter, controlled by the Synergy Control, provides quick, smooth movement of the machine. The inverter reduces power to the pump when not in use, saving energy costs. The hydraulic manifold is located at the center of the machine, which allows for even flow of hydraulic pressures, giving the machine even operation. The bending leaf is powered by two cylinders and guided by 5 linkage sets.

The electrical cabinet is located at the right side of the machine in a quick lock enclosure along with the Synergy control.

The curved “C” Frame design provides superior clamping pressures while eliminating stress points seen on competitive machines. This design allows for much more free space for complicated bends / profiles. The maximum opening height of the AM2116 is 7.87”.

FEATURES



With the creation of the AutoMax model folding machines, we have set ourselves apart from the competition. This new model has the most free space in the industry allowing the operator to create shapes that cannot be created on competitor's machines. The extra free space also reduces part handling which is important on long pieces that are difficult to manipulate.

INTEGRATED SHEET SUPPORT AND MATERIAL POSITIONING

Work pieces are fully supported by the back gauge tables beneath the clamping “C” frames, and automatically positioned to an accuracy of +/- .004". The back gauge is positioned by a servo motor for low noise operation.

Five conveniently spaced fingers provide positive contact with the sheet edge at all times and the fingers will travel down to 0.394" position. The AutoMax comes standard with a “small parts” back gauge finger set. The small parts back gauge allows the operator to run smaller parts than are normally able to be made on long folding machines. Parts down to 4" are possible. Maximum back gauge travel can be reached in less than 3 seconds. The standard back gauge depth is 49".

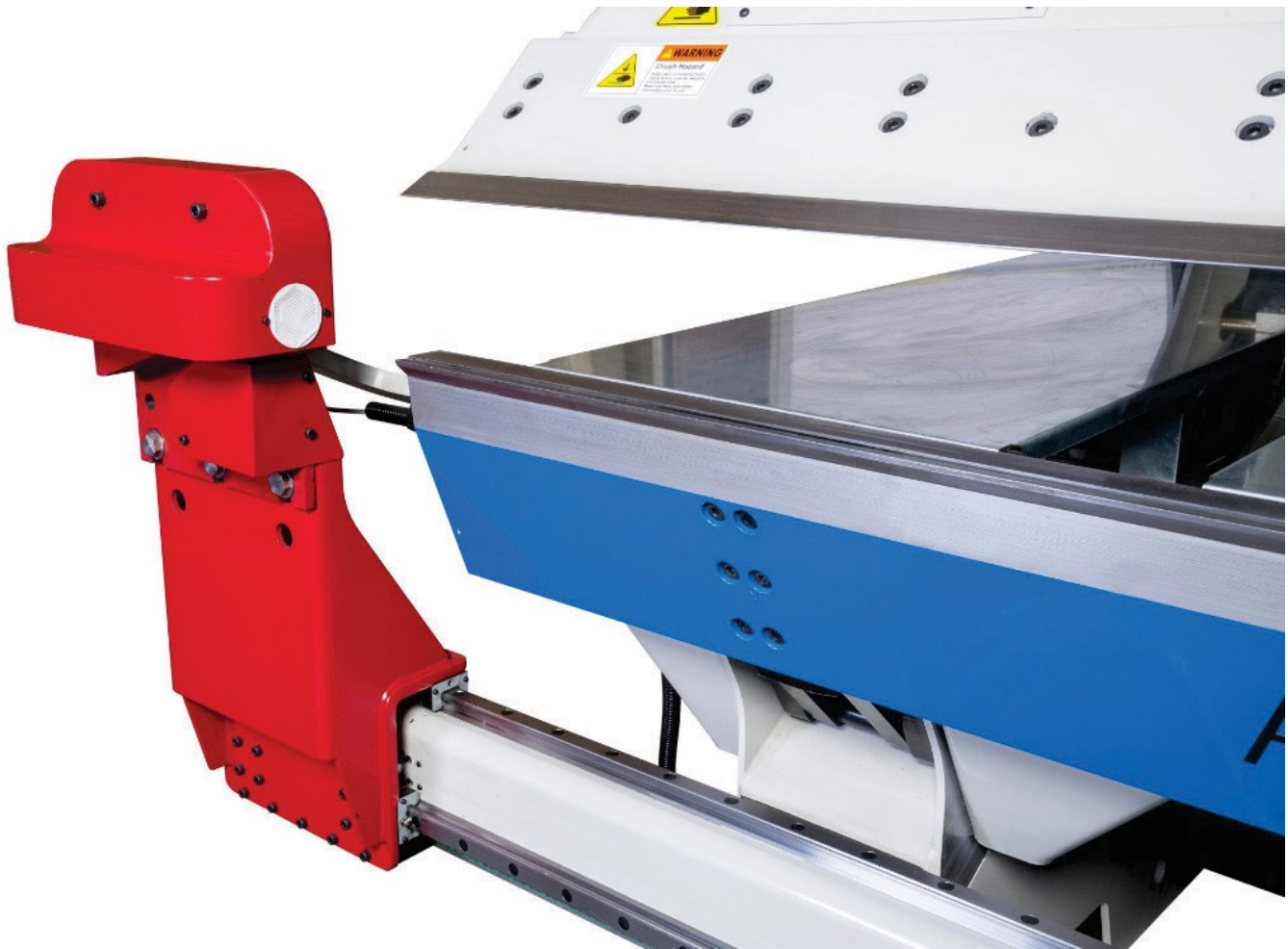


CROWNING ADJUSTMENT



Crowning is also standard on the AutoMax long folding machines. Each “C” frame has an adjustment dial that allows the operator to adjust the angle of bend at different points along the machine.

Optional Slitter



The Slitter for the AutoMax is mounted to the lower frame of the machine, freeing the folding beam of any obstructions. The slitter is hydraulic powered via frequency inverter. The unit is guided by two precision ground linear rails. The rigid mount of the AutoMax Slitting unit allows quick and accurate cutting of material at capacity.



SAFETY



Laser Guarded Pinch Point

The laser guards the full bend length of the machine and will stop the machine from moving if trip.



Safety Bar

Acts in two stages: first it electrically and hydraulically excludes all movements considered hazardous, and secondly it opens the upper jaw 1 ¼" and returns the bending beam to its initial position.



Emergency Stop

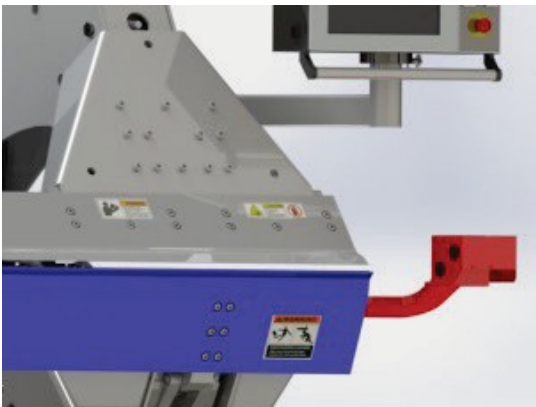
Immediate interruption of all machine functions

SAFETY



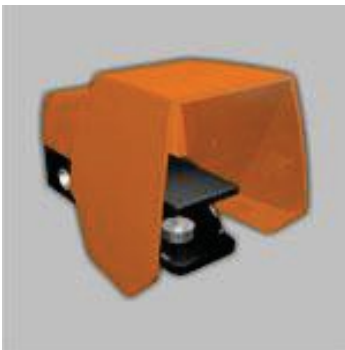
Jaw closure safety

Stops the descent of the upper jaw at about 1 ¼" from the lower jaw.



Closing speed slow down

In the last 1 ¼" the upper jaw speed is limited to .394" per second as an additional safety feature.



Second man pedal

Usable along the entire length of the machine: necessary for a second operator.

Intelligent Controls

Synergy is the newest software designed for Roper Whitney's line of powered folding machines. It is a highly advanced CNC system that takes the complexity out of programming and running parts. The full-color, graphical touch screen allows you to store, browse and search for parts, as well as create new parts on the fly.

Control Features

- Windows 8.1 imbedded industry pro.
- Automatic sequencing of the part that is drawn.
- Possibility of saving programs in folders and subfolders.
- 3D Part display.
- Part simulation to verify bends sequence, material handling and collisions.
- A search function is used to make it easier to identify a part.
- Calculates the stretch out of the part.
- Export of programs, library materials and back up to USB stick.
- The actual values of the axis are shown on the display, as well as the motion of the machine in real time.
- There are 3 different hems: Open Closed or Tear Drop.
- Capable of importing DXF files.
- Konstruct offline programming
- Konnect online service and operator assistance.
- Accepts Eagleview® files

With Synergy, you have the option to purchase Konstruct. The Synergy software brings together information from the office-based Konstruct program and the field-based Konstruct Mobile with Roper Whitney's technical support program Konnect.



You've seen this play out over and over you're on site and you realize you're missing a part. You sketch it out and send a driver to your fabrication shop. The driver makes the trip, waits while your operator fabricates the part, then hustles back to the site. Efficient? Hardly. There is a better way. We call it Konstruct.

Konstruct is an innovative software package created and used exclusively by Roper Whitney. This in-office software package allows the office to communicate directly with the Synergy control on your machine. From the office the administrator can create, manage and monitor the activities on the folding machines.



Greater Control

Parts are created the same way as they would be on the machine. It is as simple as drawing the shape with the correct angles and dimensions and the software does the rest.

The part is then automatically sequenced so that the proper bend order is followed. The type of material, number of pieces and any other information is entered and the job is ready to be run.

The administrator can then see what jobs are waiting to be run, what is in process and what has been completed giving you greater control over your shop processes.

- Create or manage jobs
- Easy Window based navigation
- Create job list for each folder in your shop
- Real time knowledge of what jobs have been completed
- DXF file import capability



Konstruct Mobile is the “in-the-field” version of the Synergy software that operates the Autobrake and Automax folders. Using Konstruct Mobile on a mobile phone, tablet or laptop you can design, price and order parts remotely from anywhere you have an internet connection and communicate that directly back to your Konstruct office software. Its efficiency that you will appreciate, and it’s a selling tool that you as a fabricating contractor, can use over competition in service and sales.



From the job site you can instantly tell the office what type of material, color, thickness and number of pieces you require. Once a part is sent to the office the job will be automatically reviewed to confirm that it can be run on the machine. As parts are created they can be stored and accessed again at a later date. The Konstruct Mobile software package can be used by your customers in place of sending pictures or hand sketched drawings so parts are drawn with accurate angles and dimensions.

Create, Spec and Order Parts from the Field

- Choose parts from a part library or create your own
- Simple part drawing
- Send orders from any mobile device
- Pick color, type of material and number of pieces
- Enter job name or PO#



Real-Time Support with Maximum Up-time

With Konnect you can receive real-time support for your folder directly from our service team. Our technical experts can remotely diagnose and correct most issues that may occur to help you avoid costly down-time.

Features include:

- Live audio and video on your equipment's control system
- Diagnose machine problems quickly to help you avoid down-time
- Eliminate travel costs for onsite, in-person service calls and maintenance
- Share your machine's control system so we can make necessary updates remotely
- Receive follow-up training or programming assistance



Roper Whitney Service Department



Your Machine

AUTOMAX | 2116

RW AUTOMAX SERIES		AM 2116
Bending Length		21' / 6400 mm
Bending Capacity:		
Mild Steel		16ga / 1,6 mm
Aluminum		12ga / 2,6 mm
Stainless		20ga / 1,0 mm
Maximum Bend Angle		147 Degrees
Clamping Beam Tool		33.7 Degrees
Clamping Beam Opening Height		7.87 in / 200 mm
Back gauge Depth (Standard)		49 in / 1250 mm
Number of Back gauge Fingers		5
Number of Short Piece Finger Sets		1
Optional Feature		
Slitter Capacity:		
Mild Steel		16ga / 1,6 mm
Aluminum		12ga / 2,6 mm
Stainless		20ga / 1,0 mm
Slitter Offset from Bending Point		2.5 in / 70 mm
Hydraulic Motor		7.5 Hp
Hydraulic Tank		40 gallons / 151 liters
Machine Weight		10,500 lbs. / 4,763 kg.

Machines are standard with 440 Volt 3 Phase 60 Hz electrics

USA  MADE