

PROJECT NAME : SOBHI DENTAL CLINIC

INTERIOR DESIGN

CLIENT : MR SOBHI

PMP LUXURY HOMES

PMP

DESIGN-BUILD GROUP EXCLUSIVE DESIGN

Drawing Index

A0	Cover Page		
A1	Drawing Index		
A2	Context		
D0.1	Dimension Plan	D0.24	Render
D0.2	Furniture Plan	D0.25	Render
D0.3	Ceiling Dimension Plan		
D0.4	Lighting Ceiling Dimension Plan	D0.26	Render
D0.5	Light Schedule	D0.27	Corridor Drop Ceiling
D0.6	Flooring Plan	D0.28	Render
		D0.29	Corridor Pending Ceiling
D0.7	TRMT.BAY-1		
D0.8	Render	D0.30	Render
		D0.31	Wall Interior Elevation
		D0.32	Render
D0.9	TRMT.BAY-2&-3		
D0.10	Render	END	
D0.11	Section A-A		
D0.12	Steel Stud Wall Details		
D0.13	Render		
D0.14	TRMT.BAY-4		
D0.15	Render		
D0.16	Section&Views of Waiting Area		
D0.17	Waiting Area Plan		
D0.18	Waiting Area-Wall Elevation		
D0.19	Render		
D0.20	Waiting Area-Drop Ceiling		
D0.21	Waiting Area-Drop Ceiling-Section		
D0.22	Reception Desk- Plan &Elevation		
D0.22-1	Reception Desk- Plan &Elevation		
D0.23	Reception Area - Book Shelf Dimension		



INTERIOR DESIGN
280 SHEPPARD AVE. EAST
UNIT 206, TORONTO, ON
T 416-623-9303

1. THESE DRAWINGS ARE THE COPYRIGHT PROPERTY OF PMP LUXURY HOMES CORP. AND MAY NOT BE REPRODUCED WITHOUT WRITTEN PERMISSION.
2. CONTRACTOR AND ALL SUB-TRADES SHALL VERIFY ALL SITE DIMENSIONS. ALL DRAWINGS, DETAILS AND SPECIFICATIONS SHALL BE VERIFIED AND APPROVED BY THE PMP LUXURY HOMES CORP. IN WRITING FOR APPROVAL BEFORE PROCEEDING WITH THE WORK.
3. CONTRACTOR AND SUB-CONTRACTORS, BEFORE PROCEEDING WITH WORK MUST SUBMIT ALL NECESSARY PERMITS AND APPROVALS TO THE PMP LUXURY HOMES CORP. IN WRITING.
4. CONTRACTORS MUST COMPLY WITH THE DOCUMENTS, PERFORMANCE REQUIREMENTS, APPLICABLE CODES AND REGULATIONS TO BE OBTAINED.
5. ALL DIMENSIONS AND INFORMATION SHALL BE CHECKED AND VERIFIED ON THE JOB AND ANY VARIANCES OR DISCREPANCIES MUST BE REPORTED TO PMP LUXURY HOMES CORP. BY PHONE AND SUBSEQUENT WRITTEN CONFIRMATION PRIOR TO COMMENCEMENT OF THE WORK.

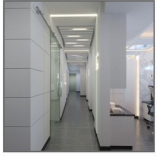
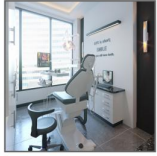
[Dental Office]

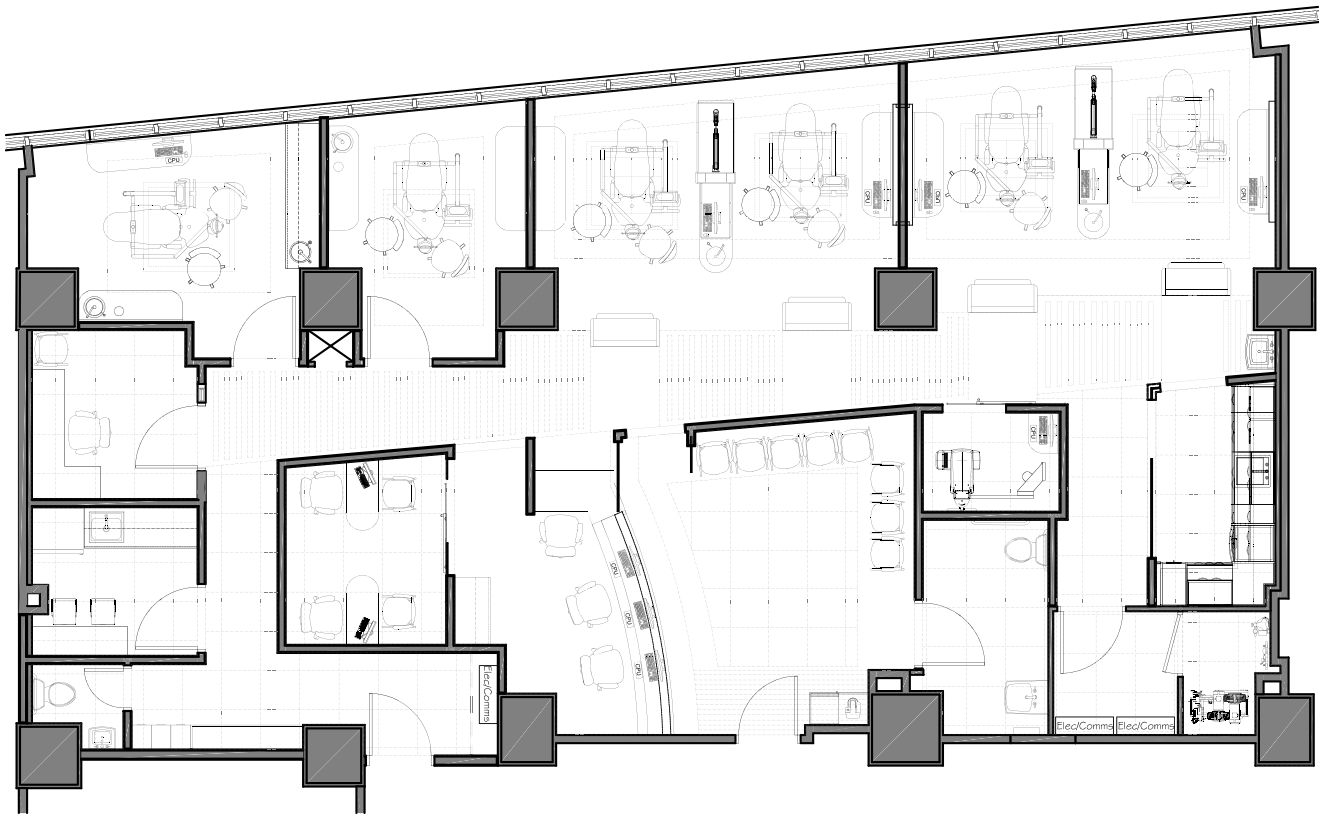
DRAWING INDEX

Main Floor

A-1

What's inside





FURNITURE PLAN



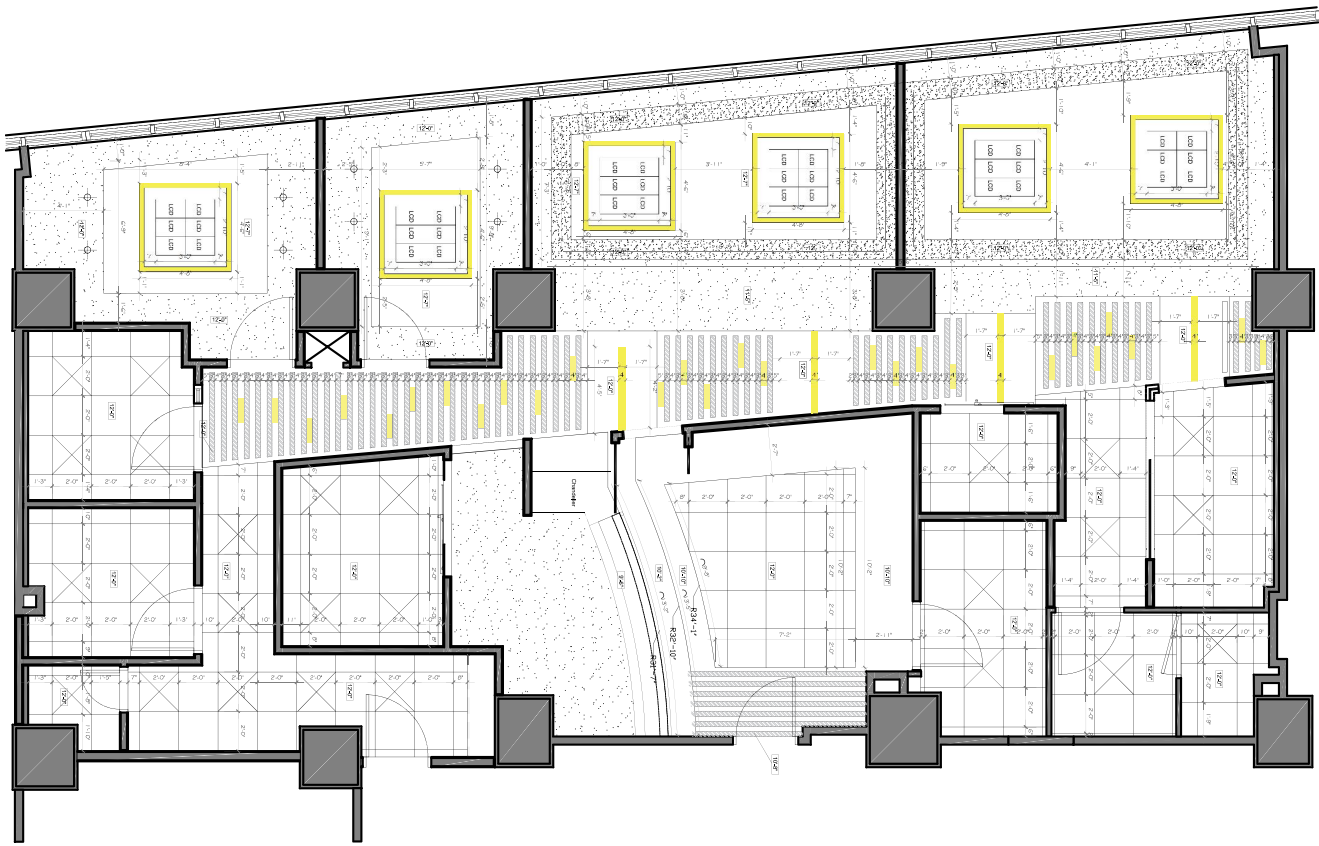
1. THESE DRAWINGS ARE THE COPYRIGHT PROPERTY OF PMP LUXURY HOMES CORP. AND MAY NOT BE REPRODUCED WITHOUT WRITTEN PERMISSION.
 2. CONSTRUCTION AND ALL SUB-TRADES SHALL VERIFY ALL SITE DIMENSIONS. ALL DRAWINGS, DETAILS AND SPECIFICATIONS AND ACCORDING TO ANY DISCREPANCIES TO THE PMP LUXURY HOMES CORP., IN WRITTEN FORM, MUST BE SUBMITTED TO THE ARCHITECT IMMEDIATELY UPON DISCOVERY.
 3. CONTRACTOR AND SUB-CONTRACTORS, BEFORE PROCEEDING WITH WORK MUST SUBMIT ALL NECESSARY SHOP DRAWINGS AND SAMPLES TO THE PMP LUXURY HOMES CORP., INTERIOR SECTION, FOR REVIEW AND APPROVAL. ALL WORK MUST COMPLY WITH THE DOCUMENTS, PERFORMANCE REQUIREMENTS, APPLICABLE CODES AND REGULATIONS.
 4. DRAWINGS NOT TO BE SCALED.
 5. DIMENSIONAL TOLERANCES SHALL BE CHECKED AND VERIFIED ON THE JOB AND ANY VARIANCES OR DISCREPANCIES MUST BE REPORTED TO PMP LUXURY HOMES CORP. BY PHONE AND SUBSEQUENT WRITTEN CONFIRMATION PRIOR TO COMMENCEMENT OF THE WORK.

[Dental Office]

FURNITURE PLAN

Main Floor

D0.2



1. THESE DRAWINGS ARE THE COPYRIGHT PROPERTY OF PMP LUXURY HOMES CORP. AND MAY NOT BE REPRODUCED WITHOUT WRITTEN PERMISSION.
2. CONSTRUCTION AND ALL SUB-TRADES SHALL VERIFY ALL SITE DIMENSIONS. ALL DRAWINGS, DETAILS AND SPECIFICATIONS ARE SUBJECT TO ANY DISCREPANCIES TO THE PMP LUXURY HOMES CORP. IN WRITTEN FOR THE CONTRACTOR AND SUB-CONTRACTORS. BEFORE PROCEEDING WITH WORK MUST SUBMIT ALL NECESSARY SHOP DRAWINGS AND SAMPLES TO THE PMP LUXURY HOMES CORP. INTERIOR SECTION, AND REGULATIONS MUST COMPLY WITH THE DOCUMENTS, PERFORMANCE REQUIREMENTS, APPLICABLE CODES AND REGULATIONS.
3. CONTRACTOR AND SUB-CONTRACTORS, BEFORE PROCEEDING WITH WORK MUST SUBMIT ALL NECESSARY SHOP DRAWINGS AND SAMPLES TO THE PMP LUXURY HOMES CORP. INTERIOR SECTION, AND REGULATIONS MUST COMPLY WITH THE DOCUMENTS, PERFORMANCE REQUIREMENTS, APPLICABLE CODES AND REGULATIONS.
4. DRAWINGS NOT TO BE SCALED.
5. ANY DISCREPANCIES SHALL BE CHECKED AND VERIFIED ON THE JOB AND ANY VARIANCES OR DISCREPANCIES MUST BE REPORTED TO PMP LUXURY HOMES CORP. BY PHONE AND SUBSEQUENT WRITTEN CONFIRMATION PRIOR TO COMMENCEMENT OF THE WORK.

[Dental Office]

**CEILING
 DIMENSION
 PLAN**

Main Floor

D0.3







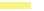


1. THESE DRAWINGS ARE THE COPYRIGHT PROPERTY OF PMP LUXURY HOMES CORP. AND MAY NOT BE REPRODUCED WITHOUT WRITTEN PERMISSION.
 2. CONSTRUCTION AND ALL SUB-TRADES SHALL VERIFY ALL SITE DIMENSIONS. ALL DRAWINGS, DETAILS AND SPECIFICATIONS AND ALL SUB-TRADES SHALL VERIFY ALL SITE DIMENSIONS. ALL DRAWINGS, DETAILS AND SPECIFICATIONS AND ALL SUB-TRADES SHALL VERIFY ALL SITE DIMENSIONS.
 3. CONTRACTOR AND SUB-CONTRACTORS, BEFORE PROCEEDING WITH WORK MUST SUBMIT ALL NECESSARY SHOP DRAWINGS AND SAMPLES TO THE PMP LUXURY HOMES CORP. INTERIOR SECTION, AND REGULATIONS MUST COMPLY WITH THE DOCUMENTS, PERFORMANCE REQUIREMENTS, APPLICABLE CODES AND REGULATIONS.
 5. DRAWINGS NOT TO BE SCALED. DIMENSIONS SHALL BE CHECKED AND VERIFIED ON THE JOB AND ANY VARIANCES OR DISCREPANCIES MUST BE REPORTED TO PMP LUXURY HOMES CORP. BY PHONE AND SUBSEQUENT WRITTEN CONFIRMATION PRIOR TO COMMENCEMENT OF THE WORK.

[Dental Office]

**LIGHTING
 DIMENSION
 PLAN**

Main Floor

D0.4

LIGHT	SPECIFICATION	ROOMS				
		CONSULT / MGR.OFFICE	PRIVATE OFFICE	STAFF ROOM	W.C.	CORRIDORS
	LED Panel Light ARAN PL22-VARV3 24"24"	ELEC. / LT. /COMMS	PAN/CEPH	UNIVERSAL W/R	UTIL. EQUIP.	STERILIZATION
	ARAN-4\" data-bbox="348 453 411 466"/>	SURGERY-1	SURGERY-2	WAITING ARERA		
	ARAN-Dimmable 4\" data-bbox="354 488 411 501"/>	RECEPTION AREA	TRMT.BAYS			
	ARAN ST-120W-30K-I 24V Color Temperature 3000K Lumens 8800	All the rooms				
	ARAN Alum Linear Light (4000K) I 1FT 40W 3200 Lumens	Middle corridors				
	All the Suspended Lights should be determined in future	RECEPTION AREA	WAITING ARERA			
	VECTOR SYSTEM Linear LED TO BE DETERMINED IN FUTURE	TRMT.BAY-1	TRMT.BAY-2	TRMT.BAY-3	TRMT.BAY-4	

1. THESE DRAWINGS ARE THE COPYRIGHT PROPERTY OF PMP LUXURY HOMES CORP. AND MAY NOT BE REPRODUCED WITHOUT WRITTEN PERMISSION.
 2. CONSTRUCTION AND ALL SUB-TRADES SHALL VERIFY ALL SITE DIMENSIONS. ALL DRAWINGS, DETAILS AND SPECIFICATIONS AND ALL CONTRACT DOCUMENTS SHALL BE SUBJECT TO THE PMP LUXURY HOMES CORP. IN WRITTEN FOR THE PROJECT AND ANY DISCREPANCIES TO THE PMP LUXURY HOMES CORP. IN WRITTEN FOR THE PROJECT.
 3. CONTRACTOR AND SUB-CONTRACTORS, BEFORE PROCEEDING WITH WORK, MUST SUBMIT ALL NECESSARY SHOP DRAWINGS AND SAMPLES TO THE PMP LUXURY HOMES CORP. INTERIOR SECTION, FOR REVIEW AND APPROVAL. ALL WORK MUST COMPLY WITH THE DOCUMENTS, PERFORMANCE REQUIREMENTS, APPLICABLE CODES AND REGULATIONS.
 4. DRAWINGS NOT TO BE SCALED. DIMENSIONS SHALL BE CHECKED AND VERIFIED ON THE JOB AND ANY VARIANCES OR DISCREPANCIES MUST BE REPORTED TO PMP LUXURY HOMES CORP. BY PHONE AND SUBSEQUENT WRITTEN CONFIRMATION PRIOR TO COMMENCEMENT OF THE WORK.

[Dental Office]

LIGHT SCHUDLE

Main Floor

D0.5

Material Flooring :



Slate is a foliated, sedimentary rock made of clay or volcanic ash. Slate can be split into thin, smooth sheets which exudes warmth with a rustic feel. Lovely as floors, countertops and fireplaces, it can be installed in kitchens, bathrooms and main entrances.

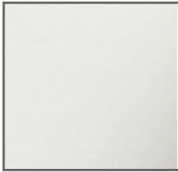


Dark tone with irregular white
 Nero Marquina Marble Slab
 Negro Bilbao, China Black Marble Tile.



Safety solid surface polishing natural look white engineered quartz stone artificial marble

165 Square Meter/Square Meters



FLOORING PLAN

SC:1.50



1. THESE DRAWINGS ARE THE COPYRIGHT PROPERTY OF PMP LUXURY HOMES CORP. AND MAY NOT BE REPRODUCED WITHOUT WRITTEN PERMISSION.
 2. CONSTRUCTION AND ALL SUB-TRADES SHALL VERIFY ALL SITE DIMENSIONS. ALL DRAWINGS, DETAILS AND SPECIFICATIONS SHALL BE REFERENCED TO THE PMP LUXURY HOMES CORP., IN WRITTEN FOR APPROVAL BEFORE PROCEEDING WITH THE WORK.
 3. CONTRACTOR AND SUB-CONTRACTORS, BEFORE PROCEEDING WITH WORK MUST SUBMIT ALL NECESSARY PERMITS AND APPROVALS TO THE PMP LUXURY HOMES CORP. IN WRITTEN FORM.
 4. CONTRACTORS MUST COMPLY WITH THE DOCUMENTS, PERFORMANCE REQUIREMENTS, APPLICABLE CODES AND REGULATIONS TO BE SCALES.
 5. ALL DIMENSIONS AND INFORMATION SHALL BE CHECKED AND VERIFIED ON THE JOB AND ANY VARIANCES OR DISCREPANCIES MUST BE REPORTED TO PMP LUXURY HOMES CORP. BY PHONE AND SUBSEQUENT WRITTEN CONFIRMATION PRIOR TO COMMENCEMENT OF THE WORK.

[Dental Office]

FLOORING PLAN

Main Floor

D0.6



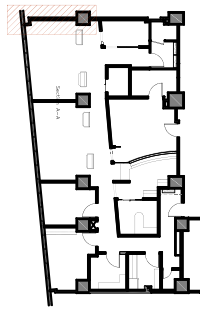


INTERIOR WALL ELEVATIONS & DETAILS

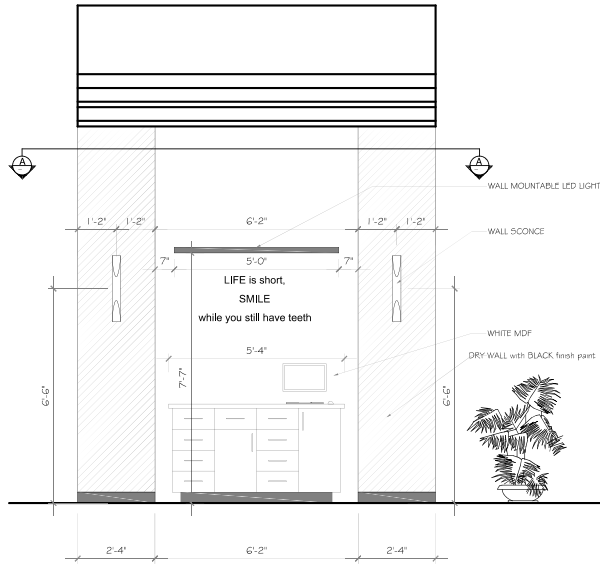
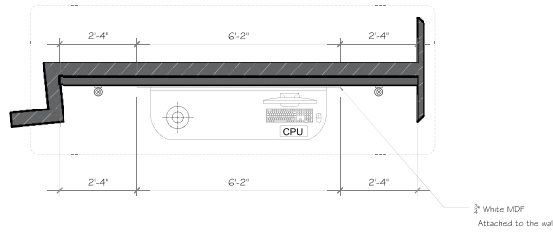
1. THESE DRAWINGS ARE THE COPYRIGHT PROPERTY OF PMP LUXURY HOMES CORP. AND MAY NOT BE REPRODUCED WITHOUT WRITTEN PERMISSION.
 2. CONSTRUCTION AND ALL SUB-TRADES SHALL VERIFY ALL SITE DIMENSIONS. ALL DRAWINGS, DETAILS AND SPECIFICATIONS AND ALL SUB-TRADES SHALL VERIFY ALL SITE DIMENSIONS. ALL DRAWINGS, DETAILS AND SPECIFICATIONS AND ALL SUB-TRADES SHALL VERIFY ALL SITE DIMENSIONS.
 3. CONTRACTOR AND SUB-CONTRACTORS, BEFORE PROCEEDING WITH WORK, MUST SUBMIT ALL NECESSARY SHOP DRAWINGS AND SAMPLES TO THE PMP LUXURY HOMES CORP. INTERIOR SECTION, AND REGULATIONS, AND MUST COMPLY WITH THE DOCUMENTS, PERFORMANCE REQUIREMENTS, APPLICABLE CODES AND REGULATIONS.
 4. DRAWINGS NOT TO BE SCALED.
 5. ALL MATERIALS SHALL BE CHECKED AND VERIFIED ON THE JOB AND ANY VARIANCES OR DISCREPANCIES MUST BE REPORTED TO PMP LUXURY HOMES CORP. BY PHONE AND SUBSEQUENT WRITTEN CONFIRMATION PRIOR TO COMMENCEMENT OF THE WORK.

[Dental Office]

Main Floor



Key Plan



WALL ELEVATION view 01

SC:1'-1'-0"

1. THESE DRAWINGS ARE THE COPYRIGHT PROPERTY OF PMP LUXURY HOMES CORP. AND MAY NOT BE REPRODUCED WITHOUT WRITTEN PERMISSION.
2. CONSTRUCTION AND ALL SUB-TRADES SHALL VERIFY ALL SITE DIMENSIONS. ALL DRAWINGS, DETAILS AND SPECIFICATIONS AND ALL DIMENSIONS ARE SUBJECT TO THE PMP LUXURY HOMES CORP. IN WRITTEN FOR THE CONTRACTOR AND SUB-CONTRACTORS. BEFORE PROCEEDING WITH WORK MUST SUBMIT ALL NECESSARY SHOP DRAWINGS AND SAMPLES TO THE PMP LUXURY HOMES CORP. INTERIOR SECTION, AND REGULATIONS. ALL WORK MUST COMPLY WITH THE DOCUMENTS, PERFORMANCE REQUIREMENTS, APPLICABLE CODES AND REGULATIONS.
3. DRAWINGS NOT TO BE SCALED. DIMENSIONS SHALL BE CHECKED AND VERIFIED ON THE JOB AND ANY VARIANCES OR DISCREPANCIES MUST BE REPORTED TO PMP LUXURY HOMES CORP. BY PHONE AND SUBSEQUENT WRITTEN CONFIRMATION PRIOR TO COMMENCEMENT OF THE WORK.

[Dental Office]

**TRMT.BAY-1
WALL ELEVATION
VIEW 01**

Main Floor

D0.7



LIFE is short;
SMILE
 while you still have teeth.

BACK SPLASH

Ciot Ceramic

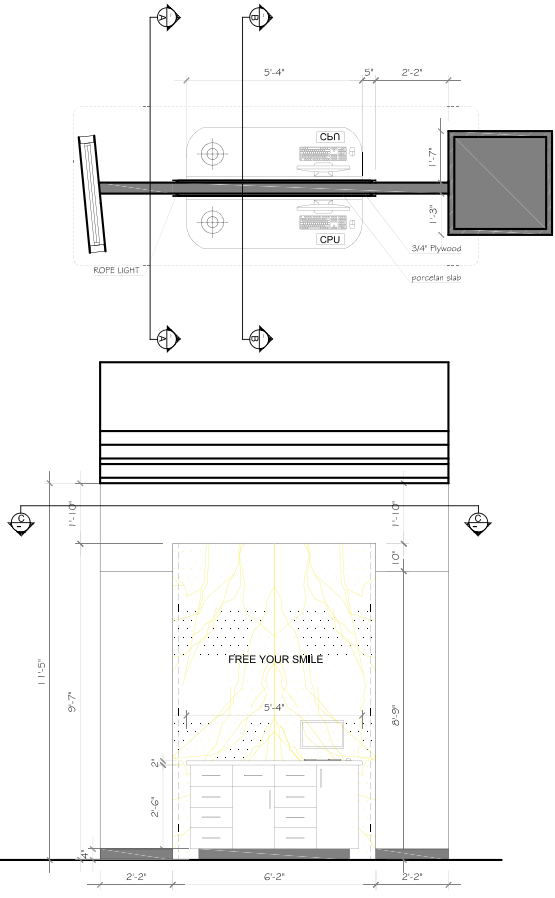
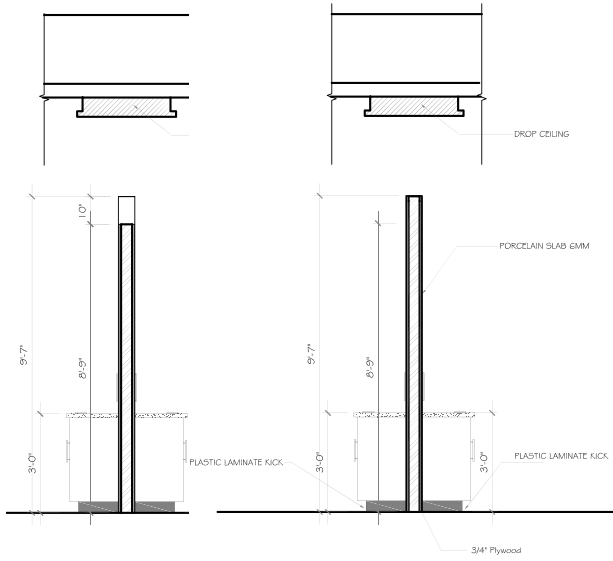
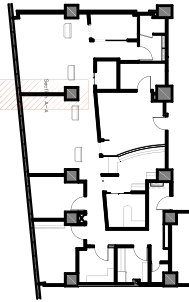
1. THESE DRAWINGS ARE THE COPYRIGHT PROPERTY OF PMP LUXURY HOMES CORP. AND MAY NOT BE REPRODUCED WITHOUT WRITTEN PERMISSION.
 2. CONSTRUCTION AND ALL SUB-TRADES SHALL VERIFY ALL SITE DIMENSIONS. ALL DRAWINGS, DETAILS AND SPECIFICATIONS SHALL BE REFERENCED TO THE PMP LUXURY HOMES CORP., IN WRITTEN FOR APPROVAL BEFORE PROCEEDING WITH THE WORK.
 3. CONTRACTOR AND SUB-CONTRACTORS, BEFORE PROCEEDING WITH WORK MUST SUBMIT ALL NECESSARY PERMITS AND APPROVALS TO THE PMP LUXURY HOMES CORP. FOR REVIEW AND APPROVAL.
 4. CONTRACTORS MUST COMPLY WITH THE DOCUMENTS, PERFORMANCE REQUIREMENTS, APPLICABLE CODES AND REGULATIONS TO BE OBTAINED.
 5. ALL DIMENSIONS AND INFORMATION SHALL BE CHECKED AND VERIFIED ON THE JOB AND ANY VARIANCES OR DISCREPANCIES MUST BE REPORTED TO PMP LUXURY HOMES CORP. BY PHONE AND SUBSEQUENT WRITTEN CONFIRMATION PRIOR TO COMMENCEMENT OF THE WORK.

[Dental Office]

RENDER
 OF
 VIEW

Main Floor

D0.8



1. THESE DRAWINGS ARE THE COPYRIGHT PROPERTY OF PMP LUXURY HOMES CORP. AND MAY NOT BE REPRODUCED WITHOUT WRITTEN PERMISSION.
2. CONSTRUCTION AND ALL SUB-TRADES SHALL VERIFY ALL SITE DIMENSIONS. ALL DRAWINGS, DETAILS AND SPECIFICATIONS AND ACCEPT ANY DISCREPANCIES TO THE PMP LUXURY HOMES CORP. IN WRITTEN FOR THE CONTRACTOR AND SUB-CONTRACTORS. BEFORE PROCEEDING WITH WORK MUST SUBMIT ALL NECESSARY SHOP DRAWINGS AND SAMPLES TO THE PMP LUXURY HOMES CORP. INTERIOR SECTION, AND REGULATIONS. MUST COMPLY WITH THE DOCUMENTS, PERFORMANCE REQUIREMENTS, APPLICABLE CODES AND REGULATIONS.
3. DRAWINGS NOT TO BE SCALED. DIMENSIONS SHALL BE CHECKED AND VERIFIED ON THE JOB AND ANY VARIANCES OR DISCREPANCIES MUST BE REPORTED TO PMP LUXURY HOMES CORP. BY PHONE AND SUBSEQUENT WRITTEN CONFIRMATION PRIOR TO COMMENCEMENT OF THE WORK.

[Dental Office]

**TRMT.BAY 2&3
WALL
ELEVATION
VIEW02-03**

Main Floor

D0.9



**WHITE MARBLE
SLAB**

Ciot Ceramic

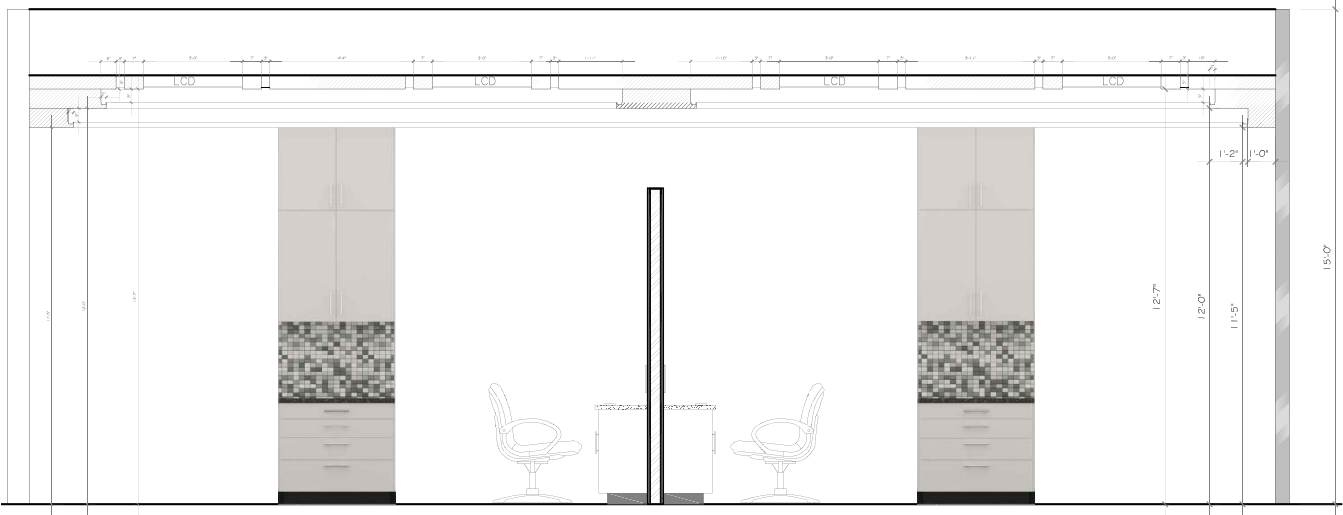
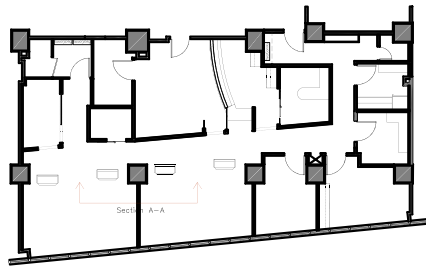
1. THESE DRAWINGS ARE THE COPYRIGHT PROPERTY OF PMP LUXURY HOMES CORP. AND MAY NOT BE REPRODUCED WITHOUT WRITTEN PERMISSION.
2. CONSTRUCTION AND ALL SUBTRADES SHALL VERIFY ALL SITE DIMENSIONS. ALL DRAWINGS, DETAILS AND SPECIFICATIONS SHALL BE REFERENCED TO THE PMP LUXURY HOMES CORP., IN WRITING FOR APPROVAL BEFORE PROCEEDING WITH THE WORK.
3. CONTRACTOR AND SUB-CONTRACTORS, BEFORE PROCEEDING WITH WORK MUST SUBMIT ALL NECESSARY PERMITS AND APPROVALS TO THE PMP LUXURY HOMES CORP. IN WRITING FOR APPROVAL.
4. CONTRACTORS MUST COMPLY WITH THE DOCUMENTS, PERFORMANCE REQUIREMENTS, APPLICABLE CODES AND REGULATIONS TO BE OBTAINED.
5. ALL DIMENSIONS AND INFORMATION SHALL BE CHECKED AND VERIFIED ON THE JOB AND ANY VARIANCES OR DISCREPANCIES MUST BE REPORTED TO PMP LUXURY HOMES CORP. BY PHONE AND SUBSEQUENT WRITTEN CONFIRMATION PRIOR TO COMMENCEMENT OF THE WORK.

[Dental Office]

**RENDER
OF
VIEW**

Main Floor

D0.10



1. THESE DRAWINGS ARE THE COPYRIGHT PROPERTY OF PMP LUXURY HOMES CORP. AND MAY NOT BE REPRODUCED WITHOUT WRITTEN PERMISSION.
 2. CONSTRUCTION AND ALL SUB-TRADES SHALL VERIFY ALL SITE DIMENSIONS. ALL DRAWINGS, DETAILS AND SPECIFICATIONS AND ALL SUB-TRADES SHALL VERIFY ALL SITE DIMENSIONS. ALL DRAWINGS, DETAILS AND SPECIFICATIONS AND ALL SUB-TRADES SHALL VERIFY ALL SITE DIMENSIONS. ALL DRAWINGS, DETAILS AND SPECIFICATIONS AND ALL SUB-TRADES SHALL VERIFY ALL SITE DIMENSIONS.
 3. CONTRACTOR AND SUB-CONTRACTORS, BEFORE PROCEEDING WITH WORK MUST SUBMIT ALL NECESSARY SHOP DRAWINGS AND SAMPLES TO THE PMP LUXURY HOMES CORP. INTERIOR SECTION, AND REGULATIONS. ALL WORK MUST COMPLY WITH THE DOCUMENTS, PERFORMANCE REQUIREMENTS, APPLICABLE CODES AND REGULATIONS.
 4. DRAWINGS NOT TO BE SCALED.
 5. DIMENSIONS SHALL BE CHECKED AND VERIFIED ON THE JOB AND ANY VARIANCES OR DISCREPANCIES MUST BE REPORTED TO PMP LUXURY HOMES CORP. BY PHONE AND SUBSEQUENT WRITTEN CONFIRMATION PRIOR TO COMMENCEMENT OF THE WORK.

[Dental Office]

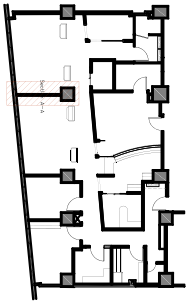
SECTION A-A

Main Floor

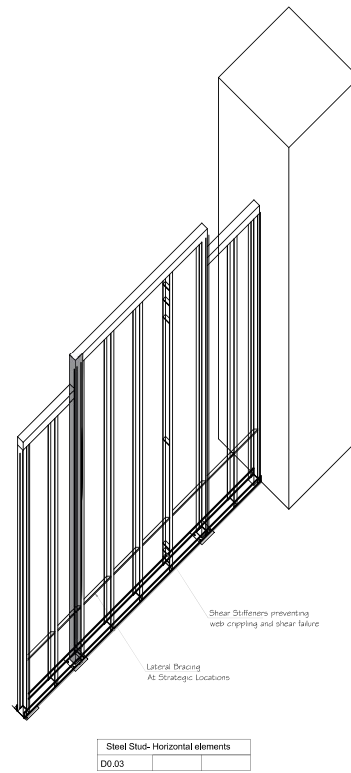
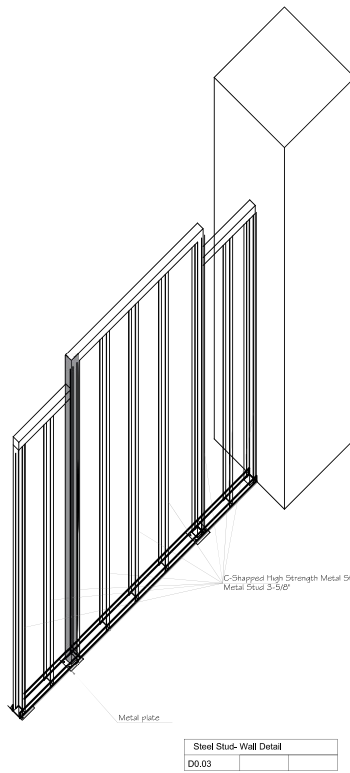
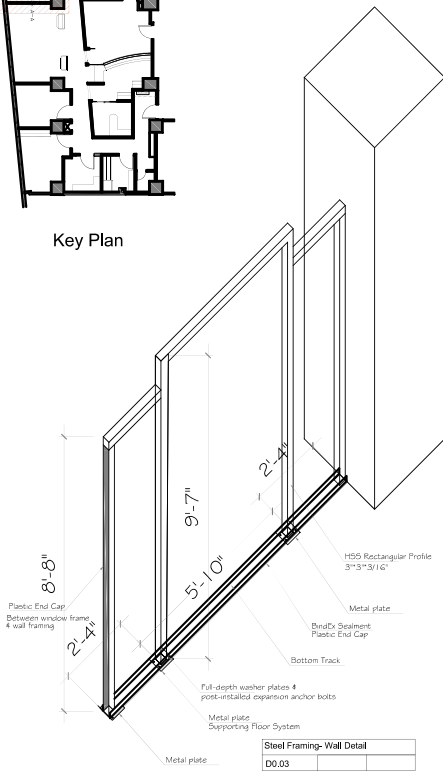
SECTION A-A

SC:1'-1'-0"

D0.11



Key Plan



1. THESE DRAWINGS ARE THE COPYRIGHT PROPERTY OF PMP LUXURY HOMES CORP. AND MAY NOT BE REPRODUCED WITHOUT WRITTEN PERMISSION.
2. CONSTRUCTION AND ALL SUB-TRADES SHALL VERIFY ALL SITE DIMENSIONS. ALL DRAWINGS, DETAILS AND SPECIFICATIONS AND ACCEPT ANY DISCREPANCIES TO THE PMP LUXURY HOMES CORP. IN WRITTEN FOR THE CONTRACTOR AND SUB-CONTRACTORS. BEFORE PROCEEDING WITH WORK MUST SUBMIT ALL NECESSARY SHOP DRAWINGS AND SAMPLES TO THE PMP LUXURY HOMES CORP. INTERIOR SECTION. ALL WORK MUST COMPLY WITH THE DOCUMENTS, PERFORMANCE REQUIREMENTS, APPLICABLE CODES AND REGULATIONS.
3. DRAWINGS NOT TO BE SCALED. DIMENSIONS SHALL BE CHECKED AND VERIFIED ON THE JOB AND ANY VARIANCES OR DISCREPANCIES MUST BE REPORTED TO PMP LUXURY HOMES CORP. BY PHONE AND SUBSEQUENT WRITTEN CONFIRMATION PRIOR TO COMMENCEMENT OF THE WORK.

[Dental Office]

**STEEL STUD
WALL
DETAILS**

Main Floor

D0.12



1. THESE DRAWINGS ARE THE COPYRIGHT PROPERTY OF PMP LUXURY HOMES CORP. AND MAY NOT BE REPRODUCED WITHOUT WRITTEN PERMISSION.
 2. CONSTRUCTION AND ALL SUBTRADES SHALL VERIFY ALL SITE DIMENSIONS. ALL DRAWINGS, DETAILS AND SPECIFICATIONS SHALL BE SUBJECT TO THE PMP LUXURY HOMES CORP., IN WRITING FOR APPROVAL BEFORE PROCEEDING WITH THE WORK.
 3. CONTRACTOR AND SUB-CONTRACTORS, BEFORE PROCEEDING WITH WORK MUST SUBMIT ALL NECESSARY PERMITS AND APPROVALS TO THE PMP LUXURY HOMES CORP. IN WRITING.
 4. CONTRACTORS MUST COMPLY WITH THE DOCUMENTS, PERFORMANCE REQUIREMENTS, APPLICABLE CODES AND REGULATIONS TO BE OBTAINED.
 5. ALL DIMENSIONS AND INFORMATION SHALL BE CHECKED AND VERIFIED ON THE JOB AND ANY VARIANCES OR DISCREPANCIES MUST BE REPORTED TO PMP LUXURY HOMES CORP. BY PHONE AND SUBSEQUENT WRITTEN CONFIRMATION PRIOR TO COMMENCEMENT OF THE WORK.

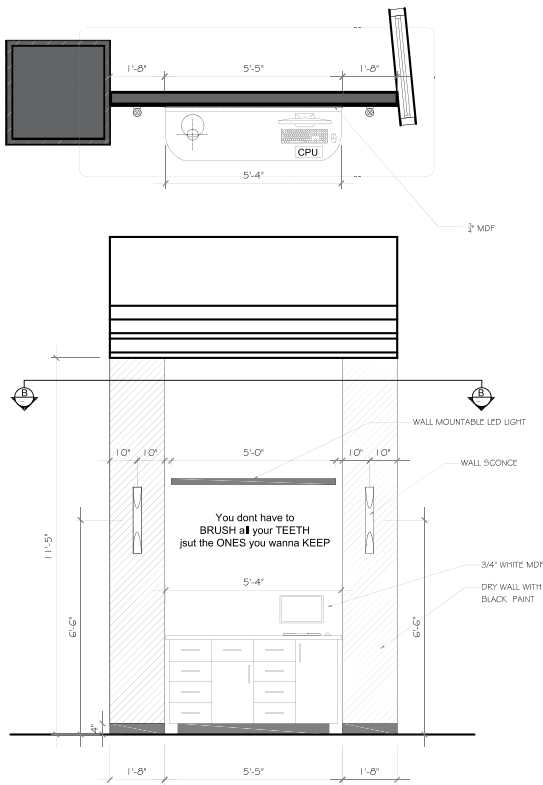
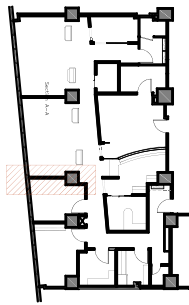
[Dental Office]

Ciot Ceramic

RENDER
 OF
 VIEW

Main Floor

D0.13



WALL ELEVATION D02-V01

SC: 1" = 1'-0"

1. THESE DRAWINGS ARE THE COPYRIGHT PROPERTY OF PMP LUXURY HOMES CORP. AND MAY NOT BE REPRODUCED WITHOUT WRITTEN PERMISSION.
2. CONSTRUCTION AND ALL SUB-TRADES SHALL VERIFY ALL SITE DIMENSIONS. ALL DRAWINGS, DETAILS AND SPECIFICATIONS AND ALL SUB-TRADES SHALL VERIFY ALL SITE DIMENSIONS. ALL DRAWINGS, DETAILS AND SPECIFICATIONS AND ALL SUB-TRADES SHALL VERIFY ALL SITE DIMENSIONS. ALL DRAWINGS, DETAILS AND SPECIFICATIONS AND ALL SUB-TRADES SHALL VERIFY ALL SITE DIMENSIONS.
3. CONTRACTOR AND SUB-CONTRACTORS, BEFORE PROCEEDING WITH WORK MUST SUBMIT ALL NECESSARY SHOP DRAWINGS AND SAMPLES TO THE PMP LUXURY HOMES CORP. INTERIOR SECTION, AND REGULATIONS, MUST COMPLY WITH THE DOCUMENTS, PERFORMANCE REQUIREMENTS, APPLICABLE CODES AND REGULATIONS.
4. DRAWINGS NOT TO BE SCALED.
5. ALL DIMENSIONS SHALL BE CHECKED AND VERIFIED ON THE JOB AND ANY VARIANCES OR DISCREPANCIES MUST BE REPORTED TO PMP LUXURY HOMES CORP. BY PHONE AND SUBSEQUENT WRITTEN CONFIRMATION PRIOR TO COMMENCEMENT OF THE WORK.

[Dental Office]

**TRMT.BAY 4
WALL
ELEVATION
VIEW 04**

Main Floor

D0.14



INTERIOR DESIGN
200 SHEPPARD AVE. EAST
UNIT 206, TORONTO, ON
T 416-623-9303

1. THESE DRAWINGS ARE THE COPYRIGHT PROPERTY OF PMP LUXURY HOMES CORP. AND MAY NOT BE REPRODUCED WITHOUT WRITTEN PERMISSION.
2. CONSTRUCTION AND ALL SUB-TRADES SHALL VERIFY ALL SITE DIMENSIONS. ALL DRAWINGS, DETAILS AND SPECIFICATIONS SHALL BE SUBJECT TO THE PMP LUXURY HOMES CORP., IN WRITING FOR APPROVAL BEFORE PROCEEDING WITH THE WORK.
3. CONTRACTOR AND SUB-CONTRACTORS, BEFORE PROCEEDING WITH WORK MUST SUBMIT ALL NECESSARY PERMITS AND APPROVALS TO THE PMP LUXURY HOMES CORP. IN WRITING.
4. CONTRACTORS MUST COMPLY WITH THE DOCUMENTS, PERFORMANCE REQUIREMENTS, APPLICABLE CODES AND REGULATIONS TO BE OBTAINED.
5. ALL DIMENSIONS AND INFORMATION SHALL BE CHECKED AND VERIFIED ON THE JOB AND ANY VARIANCES OR DISCREPANCIES MUST BE REPORTED TO PMP LUXURY HOMES CORP. BY PHONE AND SUBSEQUENT WRITTEN CONFIRMATION PRIOR TO COMMENCEMENT OF THE WORK.

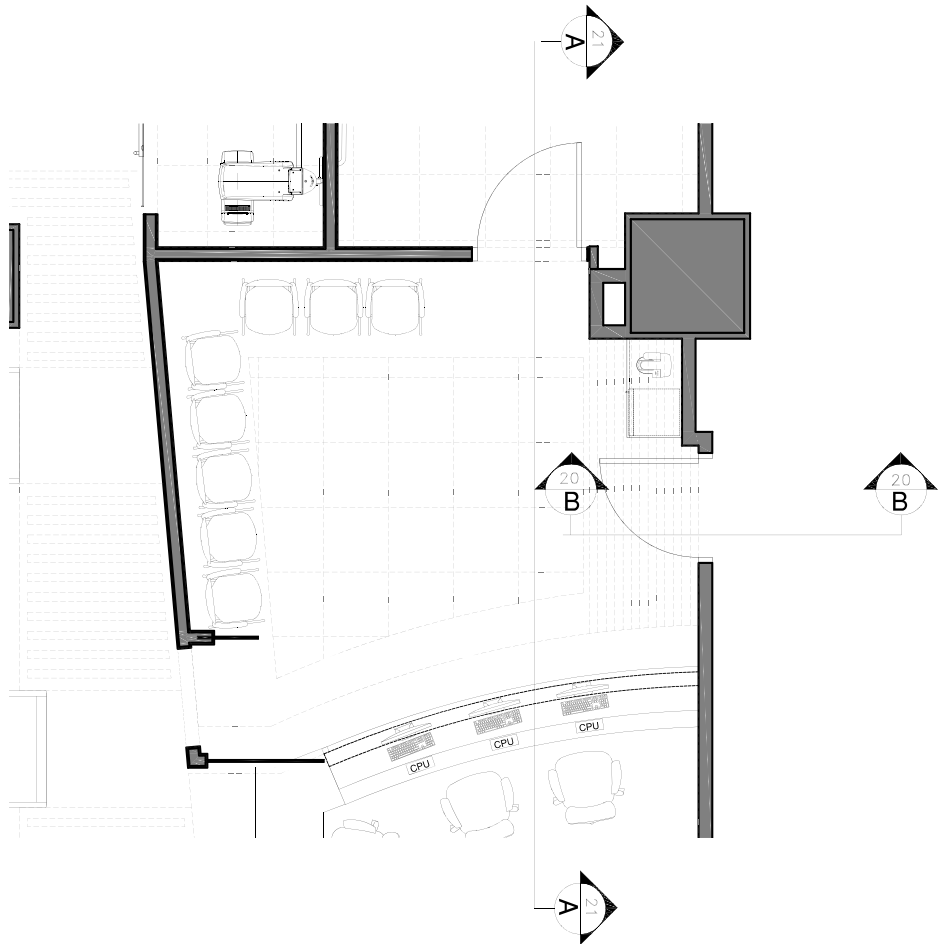
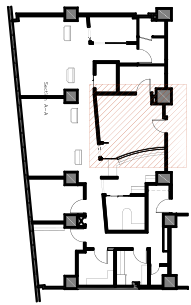
[Dental Office]

RENDER
OF
VIEW

Ciot Ceramic

Main Floor

D0.15



Waiting Area plan

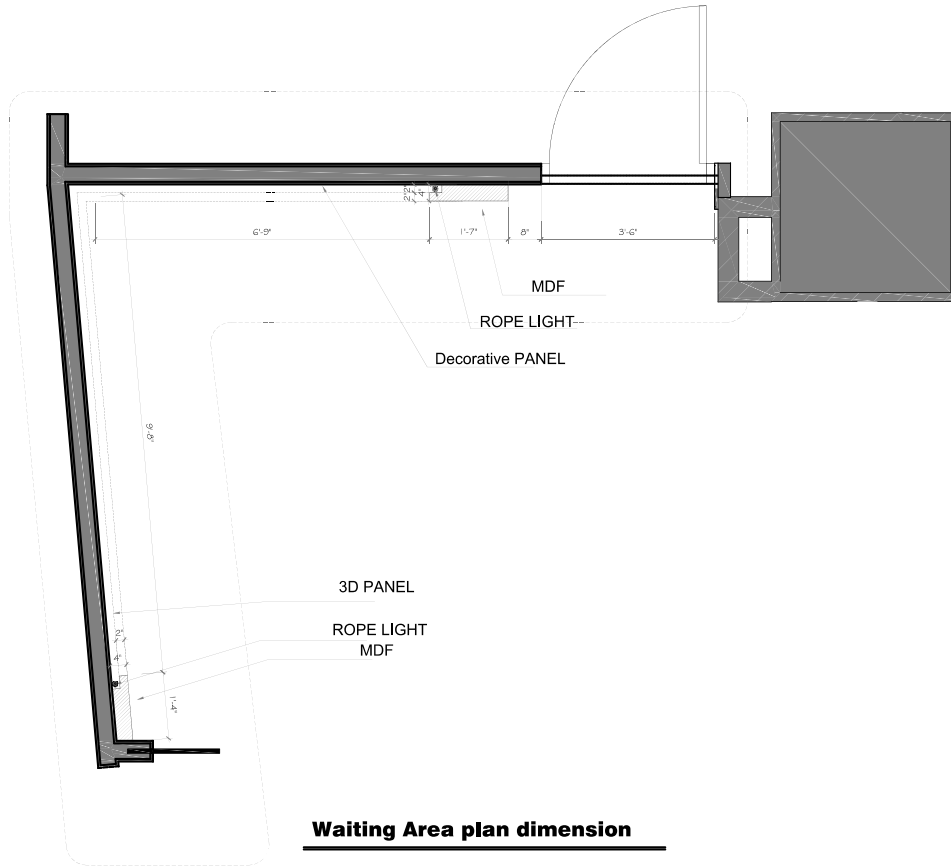
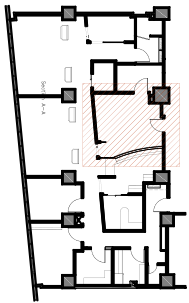
1. THESE DRAWINGS ARE THE COPYRIGHT PROPERTY OF PMP LUXURY HOMES CORP. AND MAY NOT BE REPRODUCED WITHOUT WRITTEN PERMISSION.
 2. CONSTRUCTION AND ALL SUB-TRADES SHALL VERIFY ALL SITE DIMENSIONS. ALL DRAWINGS, DETAILS AND SPECIFICATIONS AND ALL CONTRACT DOCUMENTS SHALL BE SUBJECT TO THE PMP LUXURY HOMES CORP. IN WRITTEN FOR ANY DISCREPANCIES TO THE PMP LUXURY HOMES CORP. IN WRITTEN FOR ANY DISCREPANCIES.
 3. CONTRACTOR AND SUB-CONTRACTORS, BEFORE PROCEEDING WITH WORK MUST SUBMIT ALL NECESSARY SHOP DRAWINGS AND SAMPLES TO THE PMP LUXURY HOMES CORP. INTERIOR SECTION, FOR REVIEW AND APPROVAL. ALL WORK MUST COMPLY WITH THE DOCUMENTS, PERFORMANCE REQUIREMENTS, APPLICABLE CODES AND REGULATIONS.
 4. DRAWINGS NOT TO BE SCALED.
 5. ALL DIMENSIONS SHALL BE CHECKED AND VERIFIED ON THE JOB AND ANY VARIANCES OR DISCREPANCIES MUST BE REPORTED TO PMP LUXURY HOMES CORP. BY PHONE AND SUBSEQUENT WRITTEN CONFIRMATION PRIOR TO COMMENCEMENT OF THE WORK.

[Dental Office]

**Sections & Views
 of WAITING AREA**

Main Floor

D0.16



Waiting Area plan dimension

1. THESE DRAWINGS ARE THE COPYRIGHT PROPERTY OF PMP LUXURY HOMES CORP. AND MAY NOT BE REPRODUCED WITHOUT WRITTEN PERMISSION.
2. CONSTRUCTION AND ALL SUB-TRADES SHALL VERIFY ALL SITE DIMENSIONS. ALL DRAWINGS, DETAILS AND SPECIFICATIONS AND ACCEPT ANY DISCREPANCIES TO THE PMP LUXURY HOMES CORP., IN WRITTEN FORM IMMEDIATELY UPON RECEIPT OF THE DRAWINGS.
3. CONTRACTOR AND SUB-CONTRACTORS, BEFORE PROCEEDING WITH WORK MUST SUBMIT ALL NECESSARY SHOP DRAWINGS AND SAMPLES TO THE PMP LUXURY HOMES CORP., INTERIOR SECTION, FOR REVIEW AND APPROVAL. ALL WORK MUST COMPLY WITH THE DOCUMENTS, PERFORMANCE REQUIREMENTS, APPLICABLE CODES AND REGULATIONS.
5. DRAWINGS NOT TO BE SCALED. DIMENSIONS SHALL BE CHECKED AND VERIFIED ON THE JOB AND ANY VARIANCES OR DISCREPANCIES MUST BE REPORTED TO PMP LUXURY HOMES CORP. BY PHONE AND SUBSEQUENT WRITTEN CONFIRMATION PRIOR TO COMMENCEMENT OF THE WORK.

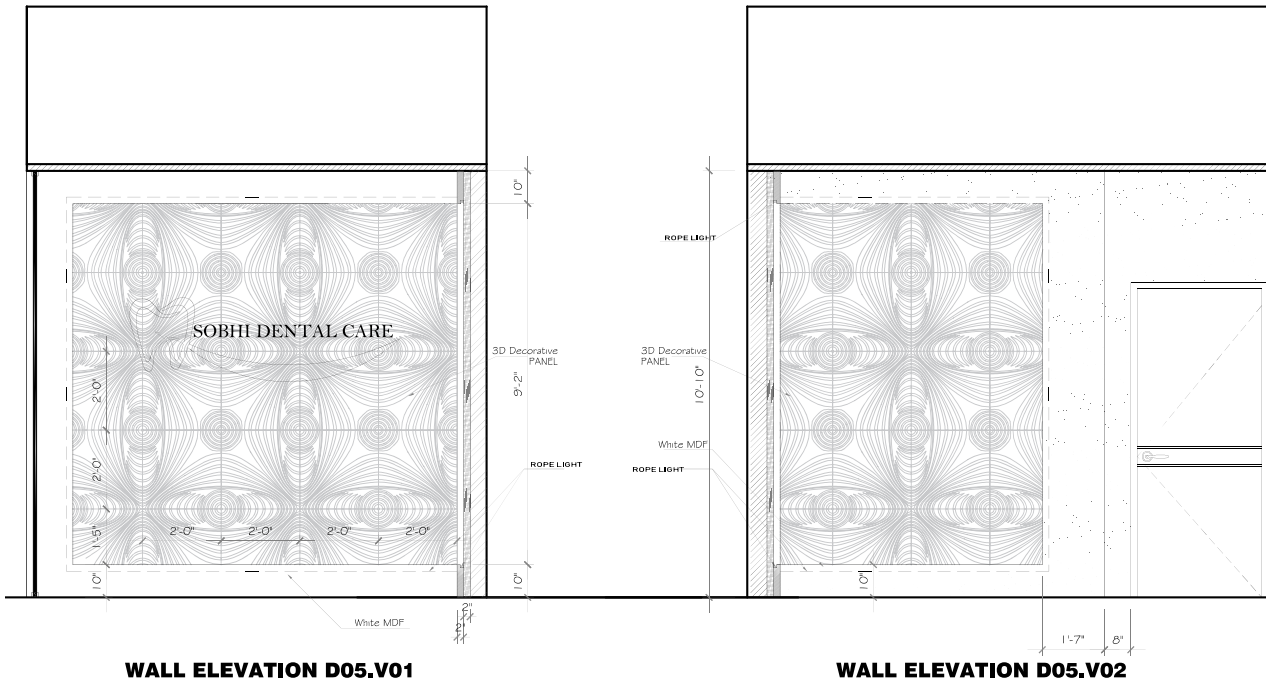
[Dental Office]

**WAITING AREA
PLAN**

Main Floor

D0.17

1. THESE DRAWINGS ARE THE COPYRIGHT PROPERTY OF PMP LUXURY HOMES CORP. AND MAY NOT BE REPRODUCED WITHOUT WRITTEN PERMISSION.
 2. CONSTRUCTION AND ALL SUB-TRADES SHALL VERIFY ALL SITE DIMENSIONS. ALL DRAWINGS, DETAILS AND SPECIFICATIONS AND ALL SUB-TRADES SHALL VERIFY ALL SITE DIMENSIONS. ALL DRAWINGS, DETAILS AND SPECIFICATIONS AND ALL SUB-TRADES SHALL VERIFY ALL SITE DIMENSIONS. ALL DRAWINGS, DETAILS AND SPECIFICATIONS AND ALL SUB-TRADES SHALL VERIFY ALL SITE DIMENSIONS.
 3. CONTRACTOR AND SUB-CONTRACTORS, BEFORE PROCEEDING WITH WORK MUST SUBMIT ALL NECESSARY SHOP DRAWINGS AND SAMPLES TO THE PMP LUXURY HOMES CORP. INTERIOR SECTION, AND REGULATIONS MUST COMPLY WITH THE DOCUMENTS, PERFORMANCE REQUIREMENTS, APPLICABLE CODES AND REGULATIONS.
 4. DRAWINGS NOT TO BE SCALED.
 5. DIMENSIONS SHALL BE CHECKED AND VERIFIED ON THE JOB AND ANY VARIANCES OR DISCREPANCIES MUST BE REPORTED TO PMP LUXURY HOMES CORP. BY PHONE AND SUBSEQUENT WRITTEN CONFIRMATION PRIOR TO COMMENCEMENT OF THE WORK.



WALL ELEVATION D05.V01

WALL ELEVATION D05.V02

[Dental Office]

**WAITING AREA
 WALL ELEVATION**

Main Floor

D0.18



PAINT FINISH

Ciot Ceramic

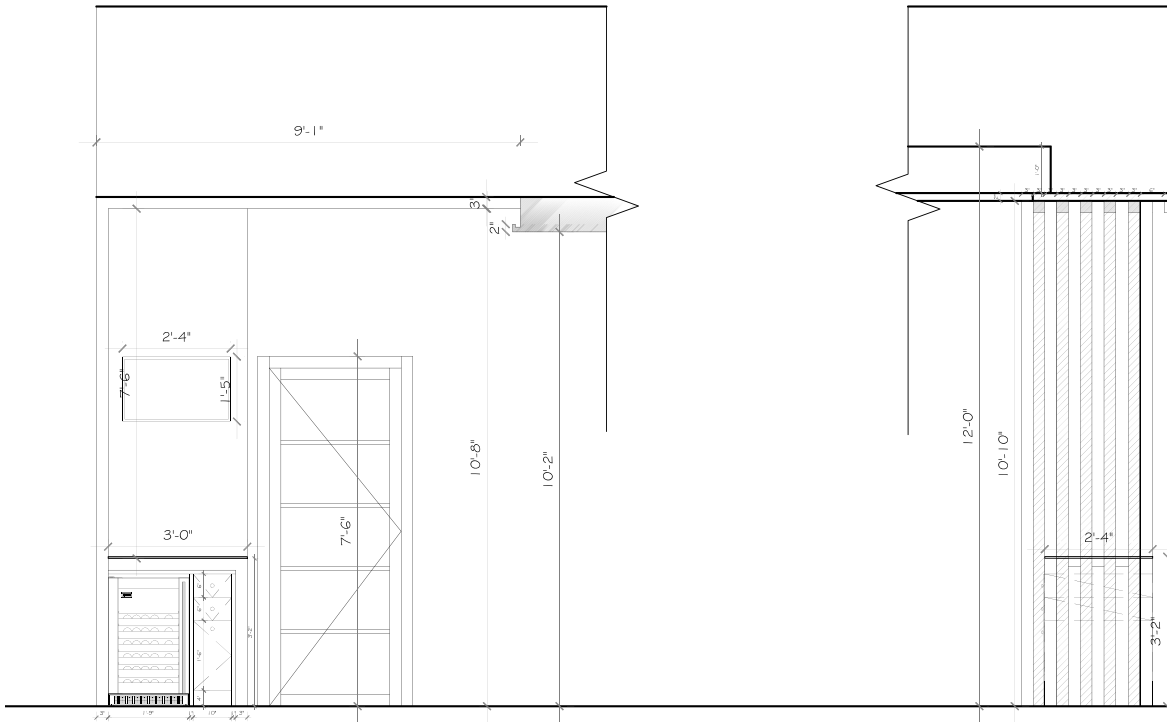
1. THESE DRAWINGS ARE THE COPYRIGHT PROPERTY OF PMP LUXURY HOMES CORP. AND MAY NOT BE REPRODUCED WITHOUT WRITTEN PERMISSION.
 2. CONSTRUCTION AND ALL SUB-TRADES SHALL VERIFY ALL SITE DIMENSIONS. ALL DRAWINGS, DETAILS AND SPECIFICATIONS SHALL BE REFERENCED TO THE PMP LUXURY HOMES CORP., IN WRITING FOR APPROVAL BEFORE PROCEEDING WITH THE WORK.
 3. CONTRACTOR AND SUB-CONTRACTORS, BEFORE PROCEEDING WITH WORK MUST SUBMIT ALL NECESSARY PERMITS AND APPROVALS TO THE PMP LUXURY HOMES CORP. IN WRITING FOR APPROVAL.
 4. CONTRACTORS MUST COMPLY WITH THE DOCUMENTS, PERFORMANCE REQUIREMENTS, APPLICABLE CODES AND REGULATIONS TO BE OBTAINED.
 5. ALL DIMENSIONS AND INFORMATION SHALL BE CHECKED AND VERIFIED ON THE JOB AND ANY VARIANCES OR DISCREPANCIES MUST BE REPORTED TO PMP LUXURY HOMES CORP. BY PHONE AND SUBSEQUENT WRITTEN CONFIRMATION PRIOR TO COMMENCEMENT OF THE WORK.

[Dental Office]

RENDER
 OF
 VIEW

Main Floor

D0.19



SECTION D3-D4: LOBBY CEILING

SC:1",1'-0"



1. THESE DRAWINGS ARE THE COPYRIGHT PROPERTY OF PMP LUXURY HOMES CORP. AND MAY NOT BE REPRODUCED WITHOUT WRITTEN PERMISSION.
2. CONSTRUCTION AND ALL SUB-TRADES SHALL VERIFY ALL SITE DIMENSIONS. ALL DRAWINGS, DETAILS AND SPECIFICATIONS AND PERFORMANCES SHALL BE VERIFIED TO THE PMP LUXURY HOMES CORP. IN WRITTEN FORM. ANY DISCREPANCIES SHALL BE REPORTED TO THE PMP LUXURY HOMES CORP. IMMEDIATELY.
3. CONTRACTOR AND SUB-CONTRACTORS, BEFORE PROCEEDING WITH WORK MUST SUBMIT ALL NECESSARY SHOP DRAWINGS AND SAMPLES TO THE PMP LUXURY HOMES CORP. INTERIOR SECTION, FOR REVIEW AND APPROVAL. ALL WORK MUST COMPLY WITH THE DOCUMENTS, PERFORMANCE REQUIREMENTS, APPLICABLE CODES AND REGULATIONS.
5. DRAWINGS NOT TO BE SCALED. DIMENSIONS SHALL BE CHECKED AND VERIFIED ON THE JOB AND ANY VARIANCES OR DISCREPANCIES MUST BE REPORTED TO PMP LUXURY HOMES CORP. BY PHONE AND SUBSEQUENT WRITTEN CONFIRMATION PRIOR TO COMMENCEMENT OF THE WORK.

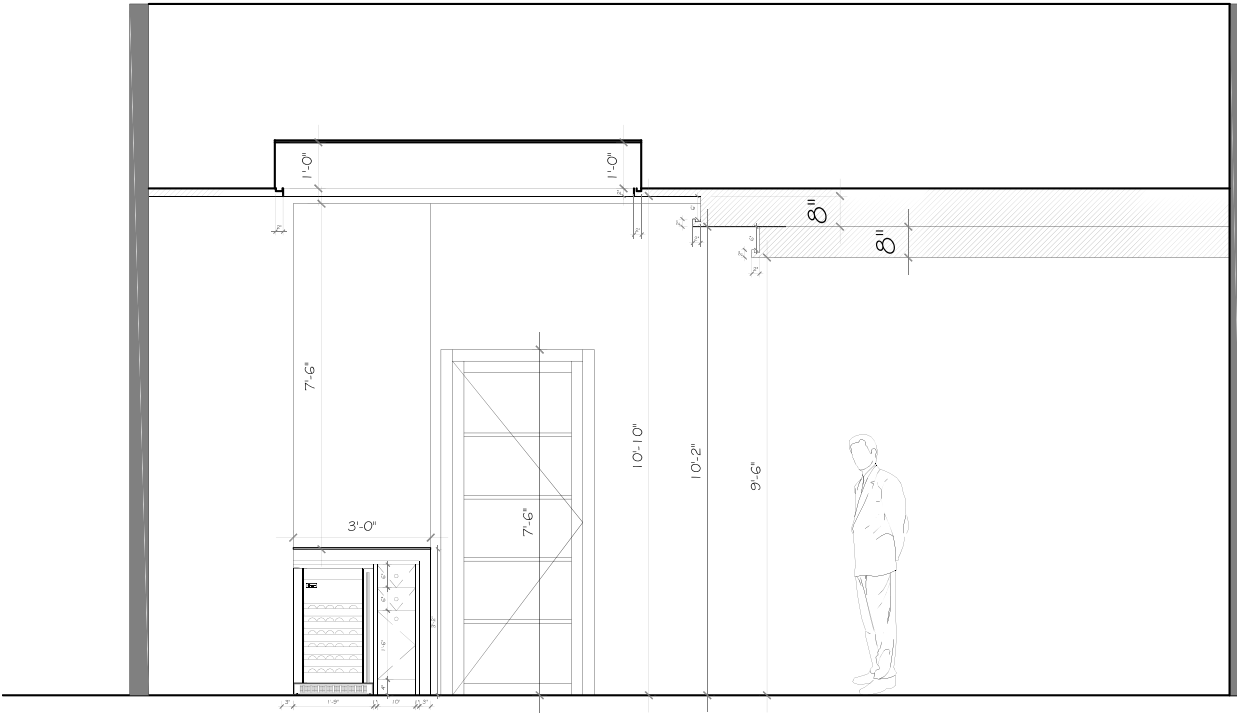
[Dental Office]

**WAITING AREA
DROP CEILING
SECTIONS**

Main Floor

D0.20





1. THESE DRAWINGS ARE THE COPYRIGHT PROPERTY OF PMP LUXURY HOMES CORP. AND MAY NOT BE REPRODUCED WITHOUT WRITTEN PERMISSION.
 2. CONSTRUCTION AND ALL SUB-TRADES SHALL VERIFY ALL SITE DIMENSIONS. ALL DRAWINGS, DETAILS AND SPECIFICATIONS ARE THE PROPERTY OF PMP LUXURY HOMES CORP. IN WRITTEN FOR APPROVAL BY THE ARCHITECT. ANY DISCREPANCIES TO THE PMP LUXURY HOMES CORP. IN WRITTEN FOR APPROVAL BY THE ARCHITECT, BEFORE PROCEEDING WITH WORK. MUST SUBMIT ALL NECESSARY SHOP DRAWINGS AND SAMPLES TO THE PMP LUXURY HOMES CORP. INTERIOR SECTION, AND REGULATIONS. MUST COMPLY WITH THE DOCUMENTS, PERFORMANCE REQUIREMENTS, APPLICABLE CODES AND REGULATIONS.
 3. CONTRACTOR AND SUB-CONTRACTORS, BEFORE PROCEEDING WITH WORK, MUST SUBMIT ALL NECESSARY SHOP DRAWINGS AND SAMPLES TO THE PMP LUXURY HOMES CORP. INTERIOR SECTION, AND REGULATIONS. MUST COMPLY WITH THE DOCUMENTS, PERFORMANCE REQUIREMENTS, APPLICABLE CODES AND REGULATIONS.
 4. DRAWINGS NOT TO BE SCALED.
 5. ALL DIMENSIONS SHALL BE CHECKED AND VERIFIED ON THE JOB AND ANY VARIANCES OR DISCREPANCIES MUST BE REPORTED TO PMP LUXURY HOMES CORP. BY PHONE AND SUBSEQUENT WRITTEN CONFIRMATION PRIOR TO COMMENCEMENT OF THE WORK.

[Dental Office]

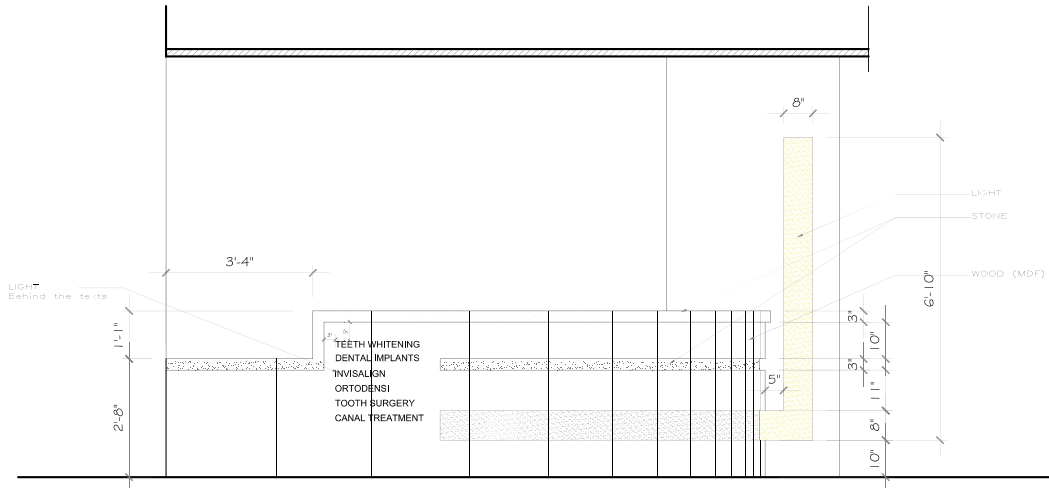
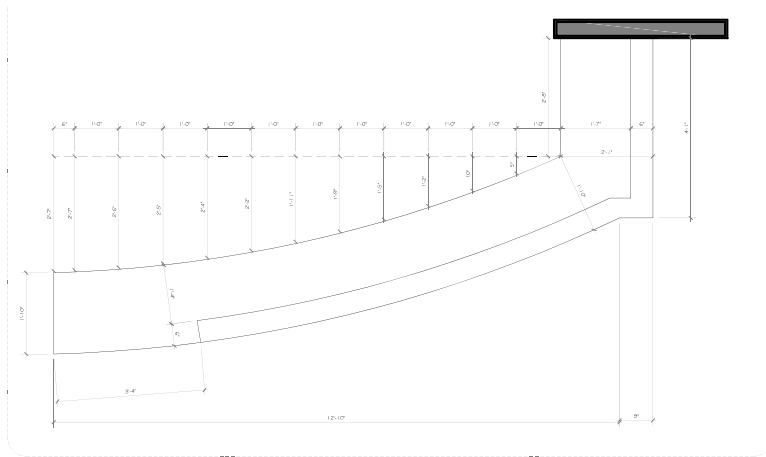
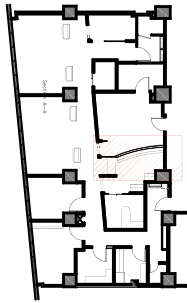
**WAITING AREA
 DROP CEILING
 SECTION**

Main Floor

D0.21

SECTION D6: LOBBY CEILING

SC:1'-1'-0"



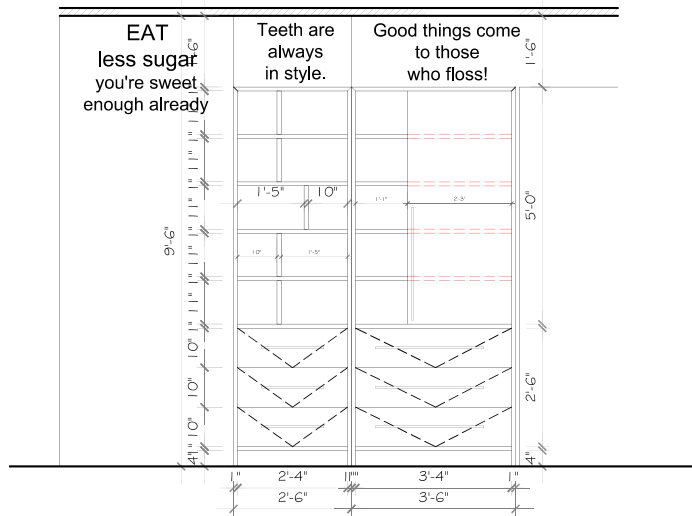
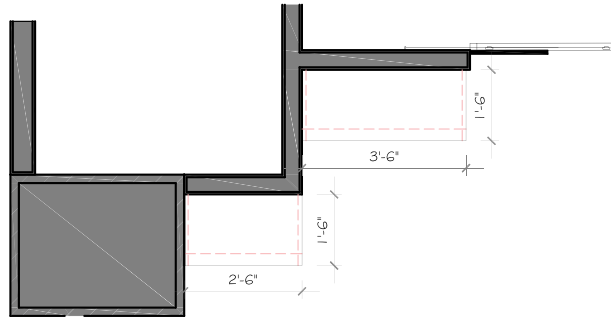
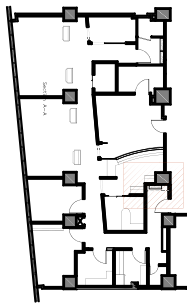
1. THESE DRAWINGS ARE THE COPYRIGHT PROPERTY OF PMP LUXURY HOMES CORP. AND MAY NOT BE REPRODUCED WITHOUT WRITTEN PERMISSION.
2. CONSTRUCTION AND ALL SUB-TRADES SHALL VERIFY ALL SITE DIMENSIONS. ALL DRAWINGS, DETAILS AND SPECIFICATIONS SHALL BE REFERENCED TO THE PMP LUXURY HOMES CORP. IN WRITTEN FORM APPROVING THESE PROCEEDINGS AND THE WORK.
3. CONTRACTOR AND SUB-CONTRACTORS, BEFORE PROCEEDING WITH WORK, MUST SUBMIT ALL NECESSARY SHOP DRAWINGS AND SAMPLES TO THE PMP LUXURY HOMES CORP. INTERIOR SECTION, FOR REVIEW AND APPROVAL. ALL WORK MUST COMPLY WITH THE DOCUMENTS, PERFORMANCE REQUIREMENTS, APPLICABLE CODES AND REGULATIONS.
4. DRAWINGS NOT TO BE SCALED.
5. ALL DIMENSIONS SHALL BE CHECKED AND VERIFIED ON THE JOB AND ANY VARIANCES OR DISCREPANCIES MUST BE REPORTED TO PMP LUXURY HOMES CORP. BY PHONE AND SUBSEQUENT WRITTEN CONFIRMATION PRIOR TO COMMENCEMENT OF THE WORK.

[Dental Office]

**Reception Desk
Plan & Elevations**

Main Floor

D0.22



1. THESE DRAWINGS ARE THE COPYRIGHT PROPERTY OF PMP LUXURY HOMES CORP. AND MAY NOT BE REPRODUCED WITHOUT WRITTEN PERMISSION.
2. CONSTRUCTION AND ALL SUB-TRADES SHALL VERIFY ALL SITE DIMENSIONS. ALL DRAWINGS, DETAILS AND SPECIFICATIONS ARE SUBJECT TO CHANGE WITHOUT NOTICE. ANY DISCREPANCIES TO THE PMP LUXURY HOMES CORP. IN WRITTEN FOR APPROVAL BEFORE PROCEEDING WITH WORK.
3. CONTRACTOR AND SUB-CONTRACTORS, BEFORE PROCEEDING WITH WORK, MUST SUBMIT ALL NECESSARY SHOP DRAWINGS AND SAMPLES TO THE PMP LUXURY HOMES CORP. INTERIOR SECTION, FOR REVIEW AND APPROVAL. ALL WORK MUST COMPLY WITH THE DOCUMENTS, PERFORMANCE REQUIREMENTS, APPLICABLE CODES AND REGULATIONS.
4. DRAWINGS NOT TO BE SCALED.
5. DIMENSIONS SHALL BE CHECKED AND VERIFIED ON THE JOB AND ANY VARIANCES OR DISCREPANCIES MUST BE REPORTED TO PMP LUXURY HOMES CORP. BY PHONE AND SUBSEQUENT WRITTEN CONFIRMATION PRIOR TO COMMENCEMENT OF THE WORK.

[Dental Office]

**Reception Area
Book Shelf
Dimension**

Main Floor

D0.23



PENDING LIGHT

PAINT FINISH

BLACK MARBLE
FOR RECEPTION
COUNTER

CIOT CERAMIC

1. THESE DRAWINGS ARE THE COPYRIGHT PROPERTY OF PMP LUXURY HOMES CORP. AND MAY NOT BE REPRODUCED WITHOUT WRITTEN PERMISSION.
2. CONSTRUCTION AND ALL SUBTRADES SHALL VERIFY ALL SITE DIMENSIONS. ALL DRAWINGS, DETAILS AND SPECIFICATIONS ARE TO BE USED AS A GUIDE TO THE PMP LUXURY HOMES CORP., IN WRITTEN FOR APPROVAL BEFORE PROCEEDING WITH THE WORK.
3. CONTRACTOR AND SUB-CONTRACTORS, BEFORE PROCEEDING WITH WORK MUST SUBMIT ALL NECESSARY PERMITS AND APPROVALS TO THE PMP LUXURY HOMES CORP. FOR REVIEW AND APPROVAL.
4. CONTRACTORS MUST COMPLY WITH THE DOCUMENTS, PERFORMANCE REQUIREMENTS, APPLICABLE CODES AND REGULATIONS TO BE SCALED.
5. ALL DIMENSIONS AND INFORMATION SHALL BE CHECKED AND VERIFIED ON THE JOB AND ANY VARIANCES OR DISCREPANCIES MUST BE REPORTED TO PMP LUXURY HOMES CORP. BY PHONE AND SUBSEQUENT WRITTEN CONFIRMATION PRIOR TO COMMENCEMENT OF THE WORK.

[Dental Office]

RENDER
OF
VIEW

Main Floor

D0.24



**BLACK WOOD
DOOR CASING**

WHITE MDF

LED PANEL LIGHT

1. THESE DRAWINGS ARE THE COPYRIGHT PROPERTY OF PMP LUXURY HOMES CORP. AND MAY NOT BE REPRODUCED WITHOUT WRITTEN PERMISSION.
2. CONSTRUCTION AND ALL SUB-TRADES SHALL VERIFY ALL SITE DIMENSIONS. ALL DRAWINGS, DETAILS AND SPECIFICATIONS SHALL BE REFERENCED TO THE PMP LUXURY HOMES CORP., IN WRITTEN FOR APPROVAL BEFORE PROCEEDING WITH THE WORK.
3. CONTRACTOR AND SUB-CONTRACTORS, BEFORE PROCEEDING WITH WORK MUST SUBMIT ALL NECESSARY PERMITS AND APPROVALS TO THE PMP LUXURY HOMES CORP. IN WRITTEN FORM.
4. CONTRACTORS MUST COMPLY WITH THE DOCUMENTS, PERFORMANCE REQUIREMENTS, APPLICABLE CODES AND REGULATIONS TO BE SCALED.
5. ALL DIMENSIONS AND INFORMATION SHALL BE CHECKED AND VERIFIED ON THE JOB AND ANY VARIANCES OR DISCREPANCIES MUST BE REPORTED TO PMP LUXURY HOMES CORP. BY PHONE AND SUBSEQUENT WRITTEN CONFIRMATION PRIOR TO COMMENCEMENT OF THE WORK.

[Dental Office]

**RENDER
OF
VIEW**

Main Floor

D0.25



GLASS

LED PANEL LIGHT



INTERIOR DESIGN
280 SHEPPARD AVE. EAST
UNIT 206, TORONTO, ON
T 416-623-9303

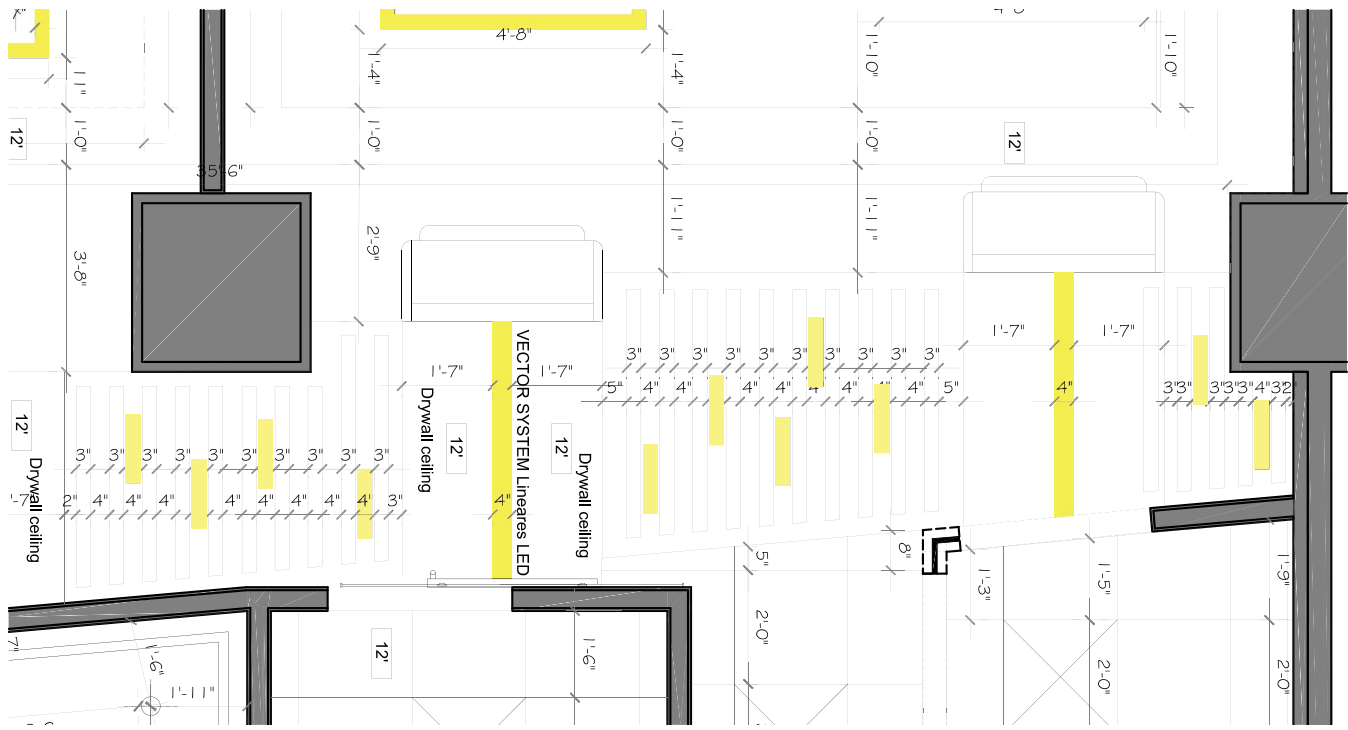
1. THESE DRAWINGS ARE THE COPYRIGHT PROPERTY OF PMP LUXURY HOMES CORP. AND MAY NOT BE REPRODUCED WITHOUT WRITTEN PERMISSION.
2. CONSTRUCTION AND ALL SUB-TRADES SHALL VERIFY ALL SITE DIMENSIONS, ALL DRAWINGS, DETAILS AND MATERIALS TO BE USED IN THE PROJECT AGAINST THE DIMENSIONS AND MATERIALS LISTED IN THESE DRAWINGS. APPROVAL BEFORE PROCEEDING WITH THE WORK.
3. CONTRACTOR AND SUB-CONTRACTORS, BEFORE PROCEEDING WITH WORK MUST SUBMIT ALL NECESSARY PERMITS, APPROVALS AND REGULATIONS TO THE AUTHORITIES.
4. CONTRACTORS MUST COMPLY WITH THE DOCUMENTS, PERFORMANCE REQUIREMENTS, APPLICABLE CODES AND REGULATIONS TO BE OBTAINED.
5. ALL DIMENSIONS AND INFORMATION SHALL BE CHECKED AND VERIFIED ON THE JOB AND ANY VARIANCES OR DISCREPANCIES MUST BE REPORTED TO PMP LUXURY HOMES CORP. BY PHONE AND SUBSEQUENT WRITTEN CONFIRMATION PRIOR TO COMMENCEMENT OF THE WORK.

[Dental Office]

RENDER
OF
VIEW

Main Floor

D0.26



1. THESE DRAWINGS ARE THE PROPERTY OF PMP LUXURY HOMES CORP. AND MAY NOT BE REPRODUCED WITHOUT WRITTEN PERMISSION.
 2. CONSTRUCTION AND ALL SUB-TRADES SHALL VERIFY ALL SITE DIMENSIONS. ALL DRAWINGS, DETAILS AND SPECIFICATIONS SHALL BE VERIFIED BY THE PMP LUXURY HOMES CORP. IN WRITTEN FORM PRIOR TO COMMENCEMENT OF WORK.
 3. CONTRACTOR AND SUB-CONTRACTORS, BEFORE PROCEEDING WITH WORK MUST SUBMIT ALL NECESSARY SHOP DRAWINGS AND SAMPLES TO THE PMP LUXURY HOMES CORP. INTERIOR SECTION, FOR REVIEW AND APPROVAL. ALL WORK MUST COMPLY WITH THE DOCUMENTS, PERFORMANCE REQUIREMENTS, APPLICABLE CODES AND REGULATIONS.
 4. DIMENSIONS NOT TO SCALE.
 5. DIMENSIONS SHALL BE CHECKED AND VERIFIED ON THE JOB AND ANY VARIANCES OR DISCREPANCIES MUST BE REPORTED TO PMP LUXURY HOMES CORP. BY PHONE AND SUBSEQUENT WRITTEN CONFIRMATION PRIOR TO COMMENCEMENT OF THE WORK.

[Dental Office]
Corridor Drop Ceiling and Lighting, VIEW 09
 Main Floor

CORRIDOR CEILING LAYOUT PLAN VIEW 09



WHITE MDF

LED PANEL LIGHT

← Coridor View 09

1. THESE DRAWINGS ARE THE COPYRIGHT PROPERTY OF PMP LUXURY HOMES CORP. AND MAY NOT BE REPRODUCED WITHOUT WRITTEN PERMISSION.
 2. CONSTRUCTION AND ALL SUB-TRADES SHALL VERIFY ALL SITE DIMENSIONS. ALL DRAWINGS, DETAILS AND SPECIFICATIONS SHALL BE VERIFIED AND APPROVED BY PMP LUXURY HOMES CORP. IN WRITING FOR APPROVAL BEFORE PROCEEDING WITH THE WORK.
 3. CONTRACTOR AND SUB-CONTRACTORS, BEFORE PROCEEDING WITH WORK MUST SUBMIT ALL NECESSARY PERMITS AND APPROVALS TO PMP LUXURY HOMES CORP. IN WRITING.
 4. CONTRACTORS MUST COMPLY WITH THE DOCUMENTS, PERFORMANCE REQUIREMENTS, APPLICABLE CODES AND REGULATIONS TO BE OBTAINED.
 5. ALL DIMENSIONS AND INFORMATION SHALL BE CHECKED AND VERIFIED ON THE JOB AND ANY VARIANCES OR DISCREPANCIES MUST BE REPORTED TO PMP LUXURY HOMES CORP. BY PHONE AND SUBSEQUENT WRITTEN CONFIRMATION PRIOR TO COMMENCEMENT OF THE WORK.

[Dental Office]

RENDER
 OF
 VIEW

Main Floor

D0.28



WHITE MARBLE SLAB

LED PANEL LIGHT

Ciot Ceramic



INTERIOR DESIGN
200 SHEPPARD AVE. EAST
UNIT 206, TORONTO, ON
T 416-623-9303

1. THESE DRAWINGS ARE THE COPYRIGHT PROPERTY OF PMP LUXURY HOMES CORP. AND MAY NOT BE REPRODUCED WITHOUT WRITTEN PERMISSION.
2. CONSTRUCTION AND ALL SUBTRADES SHALL VERIFY ALL SITE DIMENSIONS. ALL DRAWINGS, DETAILS AND SPECIFICATIONS SHALL BE REFERENCED TO THE PMP LUXURY HOMES CORP., IN WRITING FOR APPROVAL BEFORE PROCEEDING WITH THE WORK.
3. CONTRACTOR AND SUB-CONTRACTORS, BEFORE PROCEEDING WITH WORK MUST SUBMIT ALL NECESSARY PERMITS AND APPROVALS TO THE PMP LUXURY HOMES CORP. IN WRITING FOR APPROVAL.
4. CONTRACTORS MUST COMPLY WITH THE DOCUMENTS, PERFORMANCE REQUIREMENTS, APPLICABLE CODES AND REGULATIONS TO BE OBTAINED.
5. ALL DIMENSIONS AND INFORMATION SHALL BE CHECKED AND VERIFIED ON THE JOB AND ANY VARIANCES OR DISCREPANCIES MUST BE REPORTED TO PMP LUXURY HOMES CORP. BY PHONE AND SUBSEQUENT WRITTEN CONFIRMATION PRIOR TO COMMENCEMENT OF THE WORK.

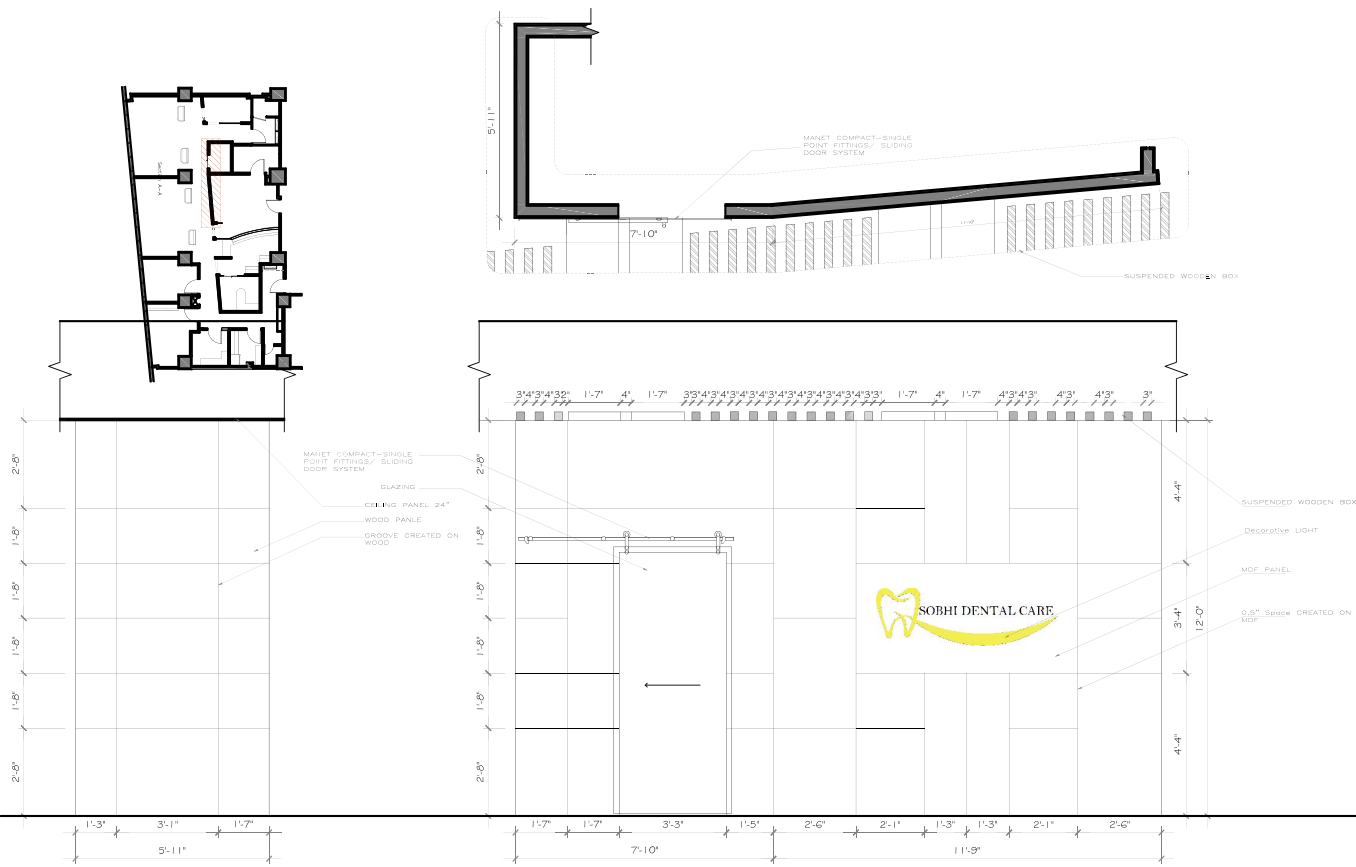
[Dental Office]

**RENDER
OF
VIEW**

Main Floor

D0.30

1. THESE DRAWINGS ARE THE SOLE PROPERTY OF PMP LUXURY HOMES CORP. AND MAY NOT BE REPRODUCED WITHOUT WRITTEN PERMISSION.
 2. CONSTRUCTION AND ALL SUB-TRADES SHALL VERIFY ALL SITE DIMENSIONS. ALL DRAWINGS, DETAILS AND SPECIFICATIONS ARE THE PROPERTY OF PMP LUXURY HOMES CORP. IN WRITTEN FOR THE CONTRACTOR AND SUB-CONTRACTORS. BEFORE PROCEEDING WITH WORK, THE CONTRACTOR AND SUB-CONTRACTORS MUST SUBMIT ALL NECESSARY SHOP DRAWINGS AND SAMPLES TO THE PMP LUXURY HOMES CORP. INTERIOR SECTION, AND REGULATIONS MUST COMPLY WITH THE DOCUMENTS, PERFORMANCE REQUIREMENTS, APPLICABLE CODES AND REGULATIONS.
 3. DRAWINGS NOT TO BE SCALED. DIMENSIONS SHALL BE CHECKED AND VERIFIED ON THE JOB AND ANY VARIANCES OR DISCREPANCIES MUST BE REPORTED TO PMP LUXURY HOMES CORP. BY PHONE AND SUBSEQUENT WRITTEN CONFIRMATION PRIOR TO COMMENCEMENT OF THE WORK.



WALL ELEVATION D06.V02.V01
 SC:1",1'-0"

[Dental Office]

WALL INTERIOR ELEVATION VIEW 11

Main Floor

D0.31



Ciot Ceramic



INTERIOR DESIGN
200 SHEPPARD AVE. EAST
UNIT 206, TORONTO, ON
T 416-623-9303

1. THESE DRAWINGS ARE THE COPYRIGHT PROPERTY OF PMP LUXURY HOMES CORP. AND MAY NOT BE REPRODUCED WITHOUT WRITTEN PERMISSION.
2. CONSTRUCTION AND ALL SUBTRADES SHALL VERIFY ALL SITE DIMENSIONS. ALL DRAWINGS, DETAILS AND SPECIFICATIONS SHALL BE SUBJECT TO THE PMP LUXURY HOMES CORP., IN WRITING FOR APPROVAL BEFORE PROCEEDING WITH THE WORK.
3. CONTRACTOR AND SUB-CONTRACTORS, BEFORE PROCEEDING WITH WORK MUST SUBMIT ALL NECESSARY PERMITS AND APPROVALS TO THE PMP LUXURY HOMES CORP. IN WRITING.
4. CONTRACTORS MUST COMPLY WITH THE DOCUMENTS, PERFORMANCE REQUIREMENTS, APPLICABLE CODES AND REGULATIONS TO BE OBTAINED.
5. ALL DIMENSIONS AND INFORMATION SHALL BE CHECKED AND VERIFIED ON THE JOB AND ANY VARIANCES OR DISCREPANCIES MUST BE REPORTED TO PMP LUXURY HOMES CORP. BY PHONE AND SUBSEQUENT WRITTEN CONFIRMATION PRIOR TO COMMENCEMENT OF THE WORK.


[Dental Office]

RENDER
OF
VIEW

Main Floor

D0:32

SOBHI DENTAL CARE

No 300	Employer Mr Sobhi	43.707083 -79.397771
All sheet design by pmp Design-Build group Beginning of the project : 18 Mar 2019 End of the project : 18 Apr 2019		Interior Designer : H.A Drawn BY: E.S

1. THESE DRAWINGS ARE THE COPYRIGHT PROPERTY OF PMP CONSULTING LTD. AND MAY NOT BE REPRODUCED WITHOUT WRITTEN PERMISSION.
2. CONSTRUCTION AND ALL SUB-TRADES SHALL VERIFY ALL SITE DIMENSIONS, ALL DRAWINGS, DETAILS AND SPECIFICATIONS. AND REPORT ANY DISCREPANCIES TO THE PMP DESIGN, IN WRITTEN FOR APPROVAL BEFORE PROCEEDING WITH THE WORK.
3. CONTRACTOR AND SUB-CONTRACTORS, BEFORE PROCEEDING WITH WORK MUST SUBMIT ALL NECESSARY SHOP DRAWINGS AND SAMPLES TO THE PMP DESIGN, INTERIOR SECTION.
4. CONTRACTORS MUST COMPLY WITH THE DOCUMENTS, PERFORMANCE REQUIREMENTS, APPLICABLE CODES AND REGULATIONS.
5. DRAWINGS NOT TO BE SCALED.
6. USE ONLY LATEST REVISED DRAWINGS.
7. ALL DIMENSIONS AND INFORMATION SHALL BE CHECKED AND VERIFIED ON THE JOB AND ANY VARIANCES OR DISCREPANCIES MUST BE REPORTED TO P.M.P DESIGN GROUP BY PHONE AND SUBSEQUENT WRITTEN CONFIRMATION PRIOR TO COMMENCEMENT OF THE WORK.