

SCADA RAT

Industrial Remote Automation & Telemetry Solutions

866-HOPE-565

WWW.HopeAutomation.com

Support@HopeAutomation.com



- Stainless Steel Enclosure
- Plug & Play Dry Contacts
- Inter-Unit Communication
- SCADA Integration Ready
- RS-485 Modbus RTU
- RJ45 Modbus TCP
- MQTT Protocol
- Cellular: T-Mobile / AT&T / Verizon

8 I/O Series Models 100-400 | Max 2 AI + 2 AO | 8 Total I/O Points

Model	Digital In (DI)	Digital Out (DO)	Analog In (AI)	Analog Out (AO)	Price
100	✓	—	—	—	\$3,500
200	✓	✓	—	—	\$4,000
300	✓	✓	✓	—	\$4,500
400	✓	✓	✓	✓	\$5,000

16 I/O Series Models 1000-4000 | Max 4 AI + 4 AO | 16 Total I/O Points

Model	Digital In (DI)	Digital Out (DO)	Analog In (AI)	Analog Out (AO)	Price
1000	✓	—	—	—	\$4,000
2000	✓	✓	—	—	\$4,500
3000	✓	✓	✓	—	\$5,000
4000	✓	✓	✓	✓	\$5,500

Model 5000 — Custom Build Up to 340 I/O Points

Fully customized I/O configuration to meet your exact requirements — Contact us for pricing

Alarm Notification Systems Cellular Voice Calls | Web-Based Alarm Log

Configuration	Features	Price
8 Alarm Inputs	Automated voice call alerts + Web alarm log & history	\$2,500
16 Alarm Inputs	Automated voice call alerts + Web alarm log & history	\$3,000

Add-On Options & Services

NEST — Local Computer

- Log & visualize data
- Set alarms & phone numbers
- Generate reports | Remote service

"Don't pay to see your data"

HMI — Touchscreen Interface

- Indoor installation
- Set alarms & phone numbers
- View trends | Custom screens

SIM Card Plans

- 1 Year: \$120
- 3 Year: \$300

** Required for warranty*

Warranty

- 3-Year "No Questions"

See terms for details

Installation

- Quoted per site
- Starting at \$800/day

Solar Power

- Off-grid capable

Contact us for details





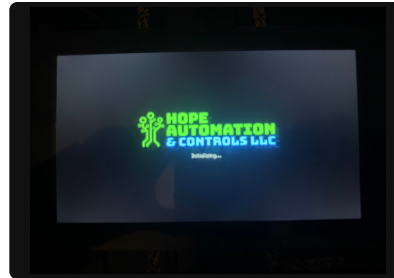
Product Gallery

HMI Touchscreen Interface



Stainless Steel Enclosure

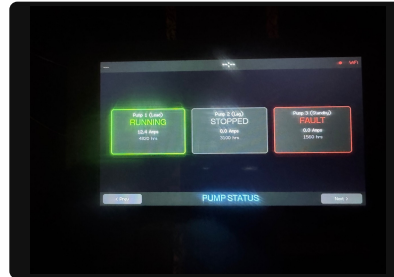
Industrial-grade, weather-resistant housing



Screen Saver



Home Dashboard



Pump Status



Tower Level



Alarm Log

**Customized
Screens
Available**

I/O Applications

Digital Inputs (DI)

- Floats
- Proof of Run
- Fault Status
- Power Status

Digital Outputs (DO)

- Call Pump
- Alarm Beacon
- Alarm Buzzer

Analog Inputs (AI)

- Flow Meter
- Pressure / Level
- Chlorine Level
- Temperature
- Rainfall / Windspeed

Analog Outputs (AO)

- VFD Speed Control
- Chemical Pump Rate

