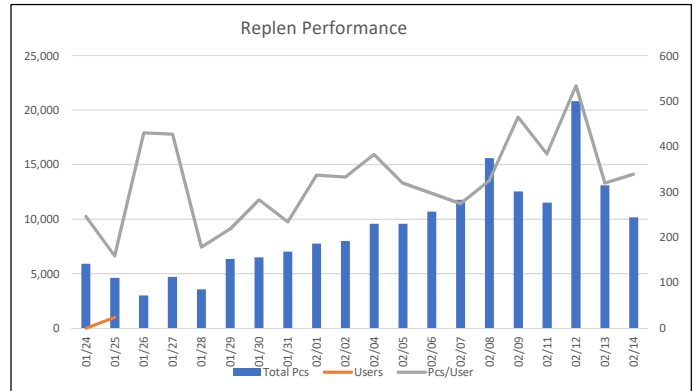
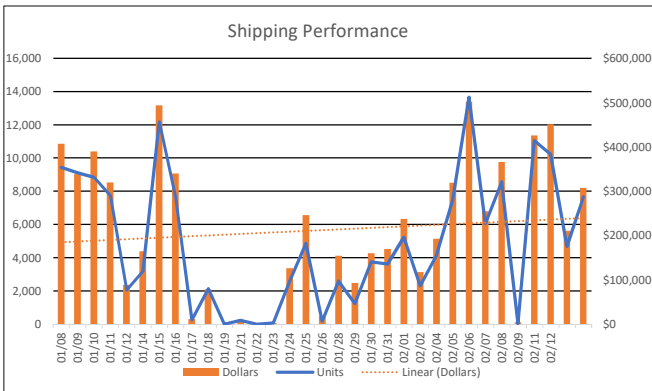
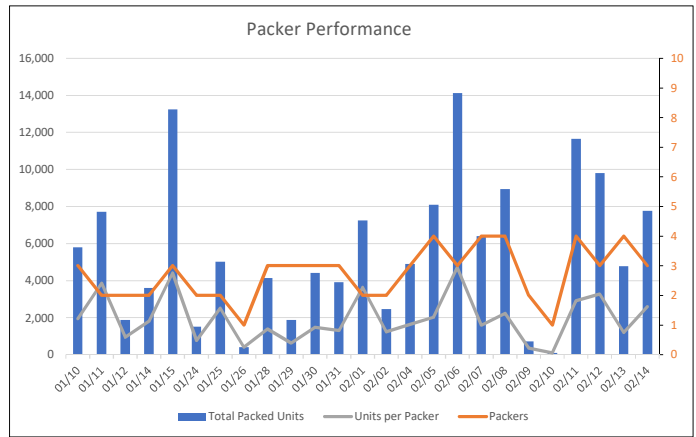
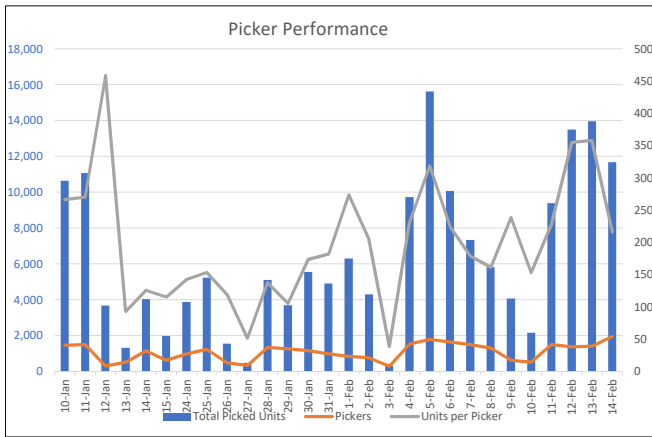


Distribution Center Metrics



Pick Ticket Backlog

*Priority	Tickets	Lines	Units	Density	
				Ticket	Line
70	2,017	14,694	146,873	72.8	10.0
80	65	79	86	1.3	1.1
85	321	1,856	31,243	97.3	16.8
90	175	355	244	1.4	0.7
95	51	81	57	1.1	0.7
105	26	97	47	1.8	0.5
110	-	-	-	-	-
115	-	-	-	-	-
125	-	-	-	-	-
Total	2,655	17,162	178,550	67.3	10.4

