

# Consultation Rooms

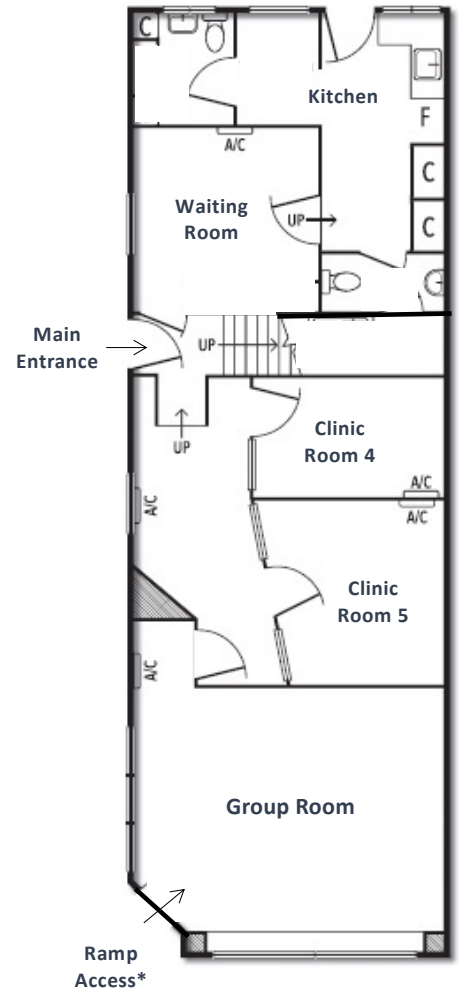
Welcome to Inner North Centre for Mental Wellbeing. The practice is located at 414 Rathdowne Street Carlton North, a wonderful location to work with quiet surrounding streets with public parking, proximity to public transport, a vibrant café and shopping strip. This spacious Victorian building offers period features across two levels, heating and cooling throughout, and has been recently upgraded with new modern/dimmable lighting, furniture, artwork and fittings. This document is to introduce the rooms and details the amenity available for practitioners.

## Ground Floor

The ground floor welcomes clients to the waiting room through the main entrance, contains staff amenities (kitchen, bathroom), 2 clinic rooms and the group room.



*The waiting room is comfortably furnished and away from clinical rooms. Books magazines and a children's play space is to the right. (below middle).*



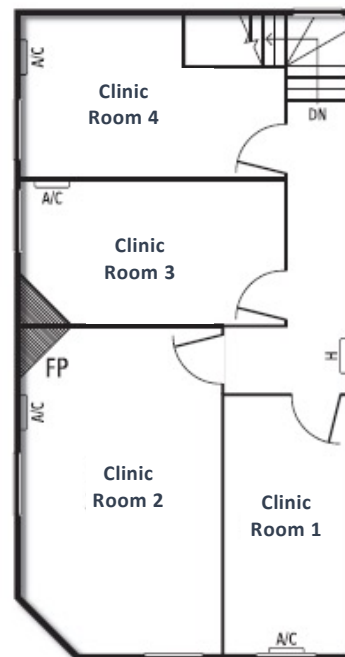
*Clinic Room 4 (above left) has been setup as a testing space with soundproofing, an adjustable table and stable chairs for children, adolescents and adults.*



*The Group Room can facilitate group therapy, professional meetings and training up to 15 participants.*

## First Floor

The first floor contains 3 consultation rooms for private practice. Each room has natural light from north and west facing windows, high ceilings, reverse cycle air conditioning and is newly furnished with couches, consultation chairs, plans, desks, lamps and artwork.



## Amenities

The following amenities are available to all staff:

- All rooms are newly furnished with artwork, plants and double blinds, have reverse cycle air conditioning and basic consumables including pens, paper, tissues, glasses and jugs.
- Access to a colour printer/fax/copier for clinical use.
- A kitchen with microwave, fridge, dishwasher, kettle and sandwich press, with basic supplies in stock (i.e, milk, coffee, tea, sugar) and dining area. Access to large rear courtyard.
- Access to the testing room with adjustable table and chairs of varying heights for young people.
- Access to hiring the Group Room at a reduced rate.
- Building access out of your consultation hours, subject to the 'Practice Policy'.
- Access to a fax machine and local GPO Box
- NBN access via the secure wireless.

The Group Room is available 7 days a week, with bookings and fees negotiated with the clinic manager. When not reserved for group therapy, training or other purposes, the Group Room can be booked by practitioners for professionals/care team meetings during their designated consultation times without charge subject to the 'Practice Policy'.