

AUTO ARC
Industrial Robot Welding Application

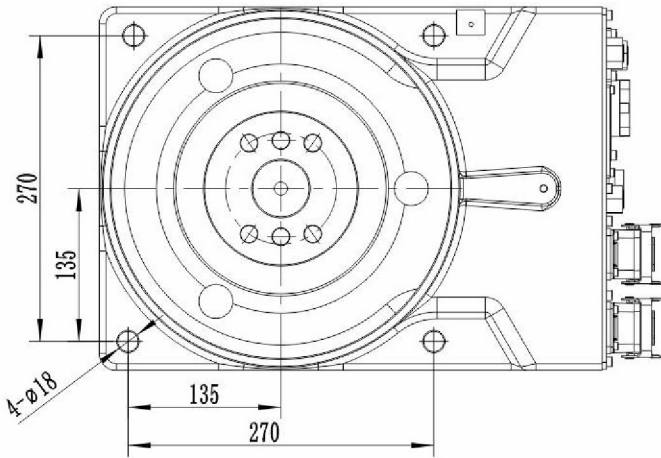


RH14-10-W

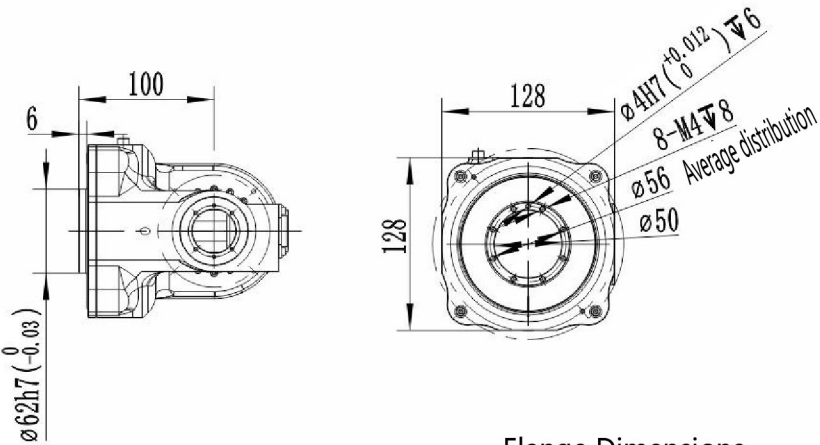
Functional Features

- ★ The arm span is 1.4 meters. It can be installed on the ground or upside down flexibly.
- ★ With large working space and fast running speed, it is suitable for welding, spraying, loading and unloading, handling, sorting, assembling and other applications.
- ★ The safety emergency stop board is independent of the controller, and the safety relay circuit is adopted to provide double circuit emergency stop to ensure the reliability of emergency stop.
- ★ The robot body cables are made of special cables for flexible robots.
- ★ Built-in three-phase transformer, 380V and 200V isolation, more stable power supply.
- ★ Power supply requirements can be customized for different countries. Built-in three-phase filter can effectively improve the performance of EMC and EMI.
- ★ The robot body is with dual-circuit gas pipe and meets welding and handling requirements
- ★ The inner diameter of 6-axis middle hole is 46 mm, which can meet the installation requirements of water-cooled gun and bellows gun.
- ★ The inner diameter of 6-axis middle hole is 46 mm, which can meet the installation requirements of water-cooled gun and bellows gun.
- ★ It's with highly flexible built-in welding cable.

Installation Interface Diagram

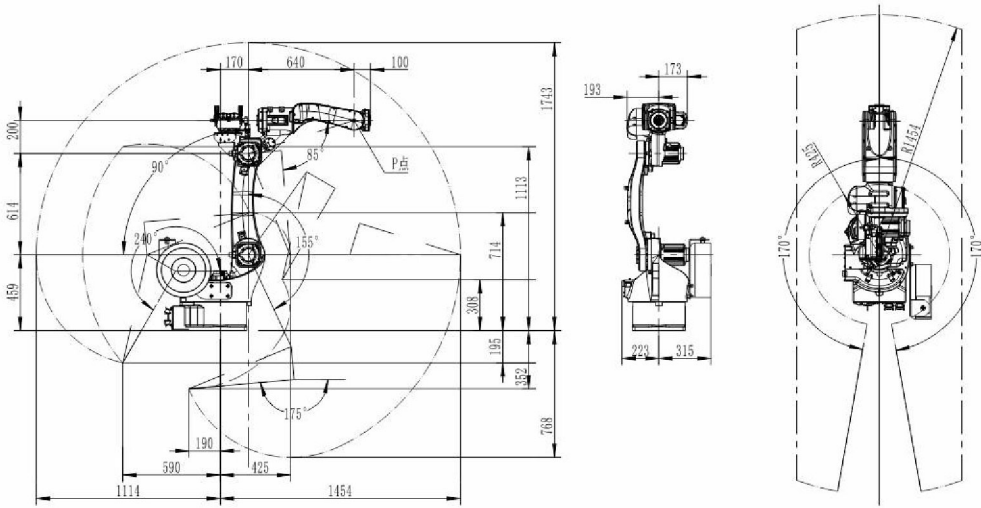


Installation Dimension of Base



Flange Dimensions

Motion Range Diagram



Robot Body Technical Parameters

Model	CRP-RH14-10-W	
Arm form	Vertical multiple joints	
Degree of freedom	6 axis	
Maximum payload	10KG	
Maximum travel	axis 1	-167° - 167°
	axis 2	0° - 175°
	axis 3	-80° - 150°
	axis 4	-190° - 190°
	axis 5	-105° - 130°
	axis 6	-210° - 210°
Maximum speed	axis 1	169°/S
	axis 2	169°/S
	axis 3	169°/S
	axis 4	280°/S
	axis 5	240°/S
	axis 6	520°/S
Allowable torque	axis 4	10N.m
	axis 5	10N.m
	axis 6	3N.m
Allowable moment of inertia	axis 4	0.25kg.m ²
	axis 5	0.25kg.m ²
	axis 6	0.05kg.m ²
Repeated positioning accuracy	±0.08mm、	
Maximum reaching distance	1440mm	
Robot body weight	170KG	
Installation mode	Ground or upside down mounting	
Installation environment	ambient temperature	0~45°C
	relative humidity	20~80% (No condensation)
	vibration	Under 0.5 G
Others	Robot installation must be away from: Flammable or corrosive liquids or gases, electrical sources of interference	
IP level	IP56	
Advantage features	Compact structure, high speed, high precision, high expansibility and easy operation	
Application	Welding, cutting, assembly, handling, marking, grinding	