

Coloured Pencil Study

# Orchidaceae

Design By Tracy Moreau

Full Colour Step By Steps, Full Size Line Drawing, Detailed Written Instructions And A Complete Supply List.



Fig 1:

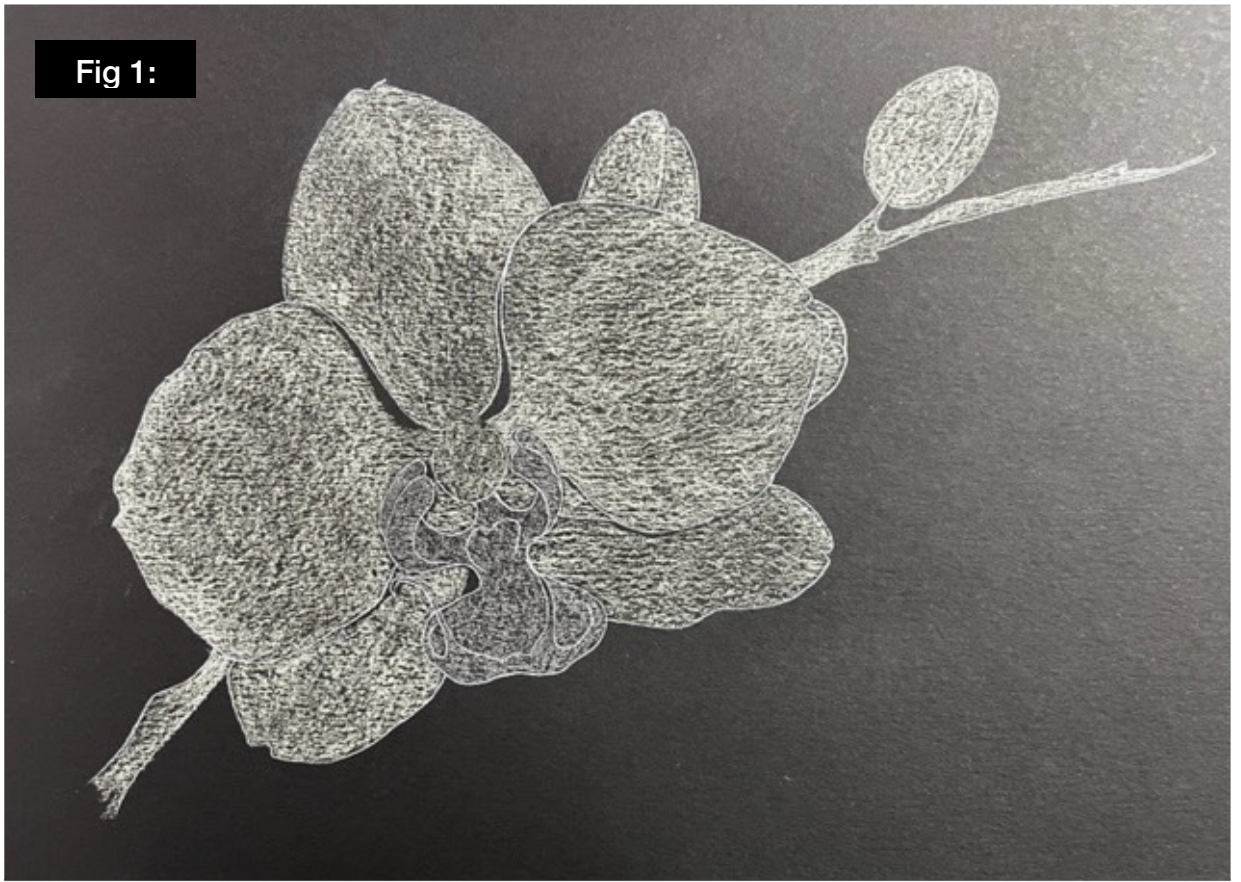


Fig 2:



Fig 3:



Fig 4:

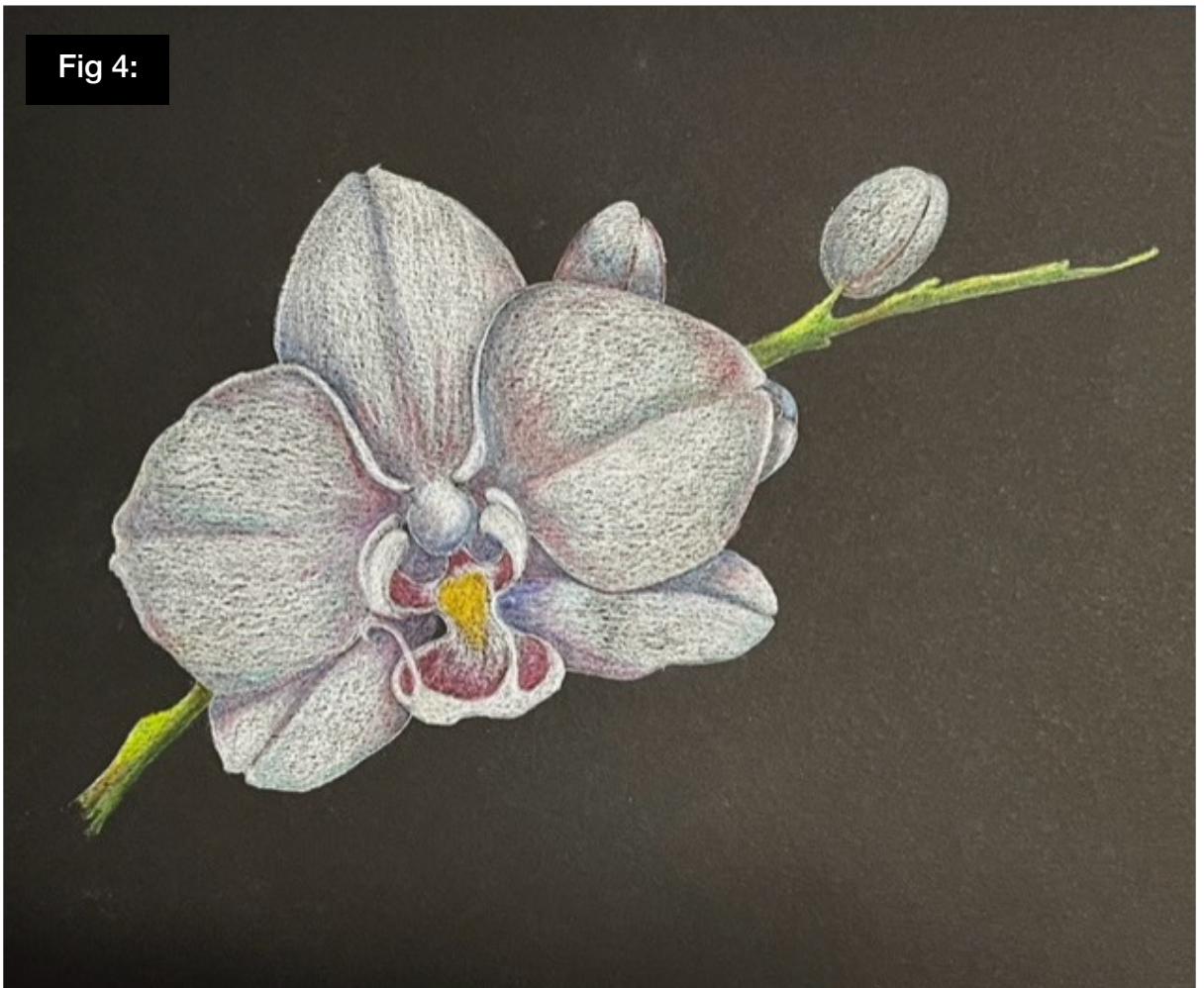


Fig 5:

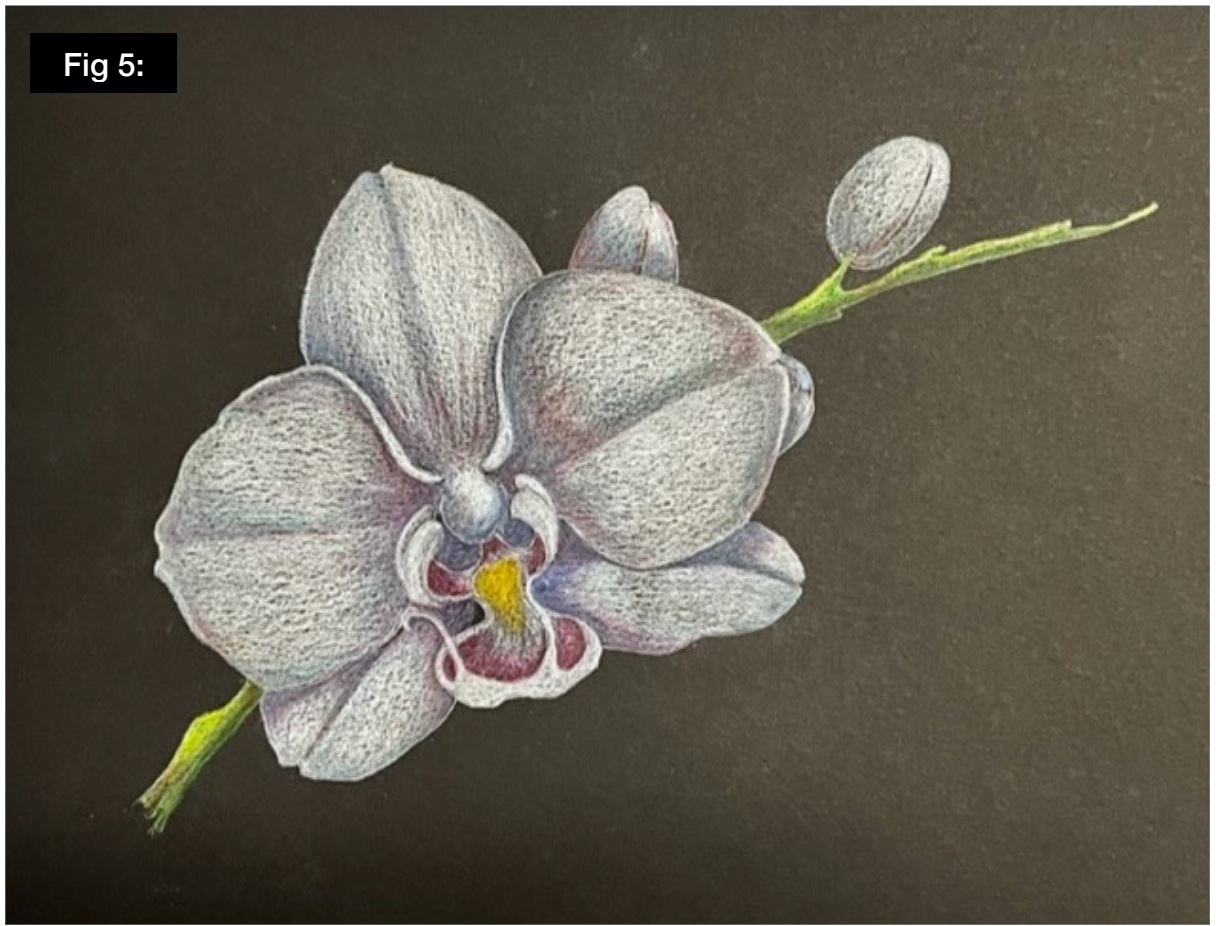


Fig 6:



# Orchidacae

Design by Tracy Moreau  
www.tracymoreau.net

I am fairly new to Coloured Pencil, though I used them many years ago, I am gradually finding my way with them, And Love sharing what I do know. Adapting Acrylic designs to coloured pencil has been fun and quite a learning curve, So any imperfections or inaccuracy, I own.

I have been playing with Black Paper.. I use black a lot in my acrylic work and have been trying to feel my way through Coloured pencil on the same colour.. BIG learning curve, But so much fun. I hope you enjoy this STRETCH as much as I have. Keep in mind this is a “STUDY”. Merely a small project to work on Technique and colour selection , it is not intended to be a “Finished Piece of Art” ( though they are mini artworks in their own right) Don’t forget to Sign and Date your “STUDIES”. Store them in order in a Folio. So you have a visual reference of your growth. You will be amazed at how much you improve as you go.

## **You Will Need:**

9 x 12 Black Mixed Media Paper or Black Matt Board.

## **Derwent Chroma Flow Coloured Pencils**

Lemon Lime  
Grass Green  
Obsidian Green  
Magenta  
Turquoise Green  
Parmesan  
Platinum  
Mango  
Flame  
Denim  
White  
Pebble  
Natural Brown

## **Michaels**

Artists Loft Coloured Pencil Blender

## **Misc:**

DecoColor Extra Fine Gold Paint Pen  
White Granite Paper  
Black Eraser ( Factis or Tombow)  
Tombow Mechanical Pencil  
Drawing Board  
Artists Tape or Light Tac painters Tape.  
Opaque White Gel Pen  
Steel Edge Ruler

## **To Begin:**

Tape your Black Paper to the drawing board, Transfer the line drawing to the paper using the White Graphite Paper, and LIGHT pressure ( too much pressure will indent the paper and the lines will be heavy) I find using the mechanical pencil is best for this.

We are using Light Pressure throughout, and layering colours much like a glazing technique used in acrylics. One layer on top of another to get both the colour and the dept we are aiming for.

## **The Floral:**

Refer to Fig 1:

Fill in each petal ( and with Parmesan ( a Warm White). Work in small elipsis ( Ovals) with Light pressure. Fill each petal ( and Bud) individually. The small centre petals and filled using the same ellipsis method and Pebble ( a Warm Grey )

Refer to Fig 2:

Apply the first blush of colour with Turquoise Green, ( Similar to Bahama Blue) Again, in an elliptical fashion and with light Pressure. (Light pressure allows you to layer colours easily) This is applied in the shaded areas of the petals. Apply Grass Green to the stem in the same fashion.

Refer to Fig 3:

Apply Magenta Over the the first layer of colour ( the Turquoise Green ), using very light pressure. Begin Applying White to the open areas ( Parmesan)( in small Ellipsis) using light pressure. It will take two or three layers so take your time.

In the Centre: Apply Platinum over the Pebble using light pressure.

Refer to Fig 4:

Deepen the shaded areas of the petals and buds with a light application Denim. ( this colour is strong so be light handed) It can be a little darker under the forward petals and the deepest areas of the floral.

The Centre of the flower Has a Beard Apply Mango to the Heart shaped area in the middle. Shade it with a little Flame ( Orange) Brighten the Petals here with a layer of White. Shade the Crease in the petal with little Turquoise Green. Shade under the Folds in the petals with Magenta, Deepen this colour with a light application of Denim ( keep it very light) you should end up with a pink/purple.

Shade the bottom of the Stems with an application of Obsidian Green ( similar to Black Green)

Refer to Fig 5:

Brighten the fine lines of the centre with White using a bit more pressure for the Details. Brighten the fold on the Larger Petals with this heavier pressure as well.

Tone ALL of the shadows with a light layer of Natural Brown.

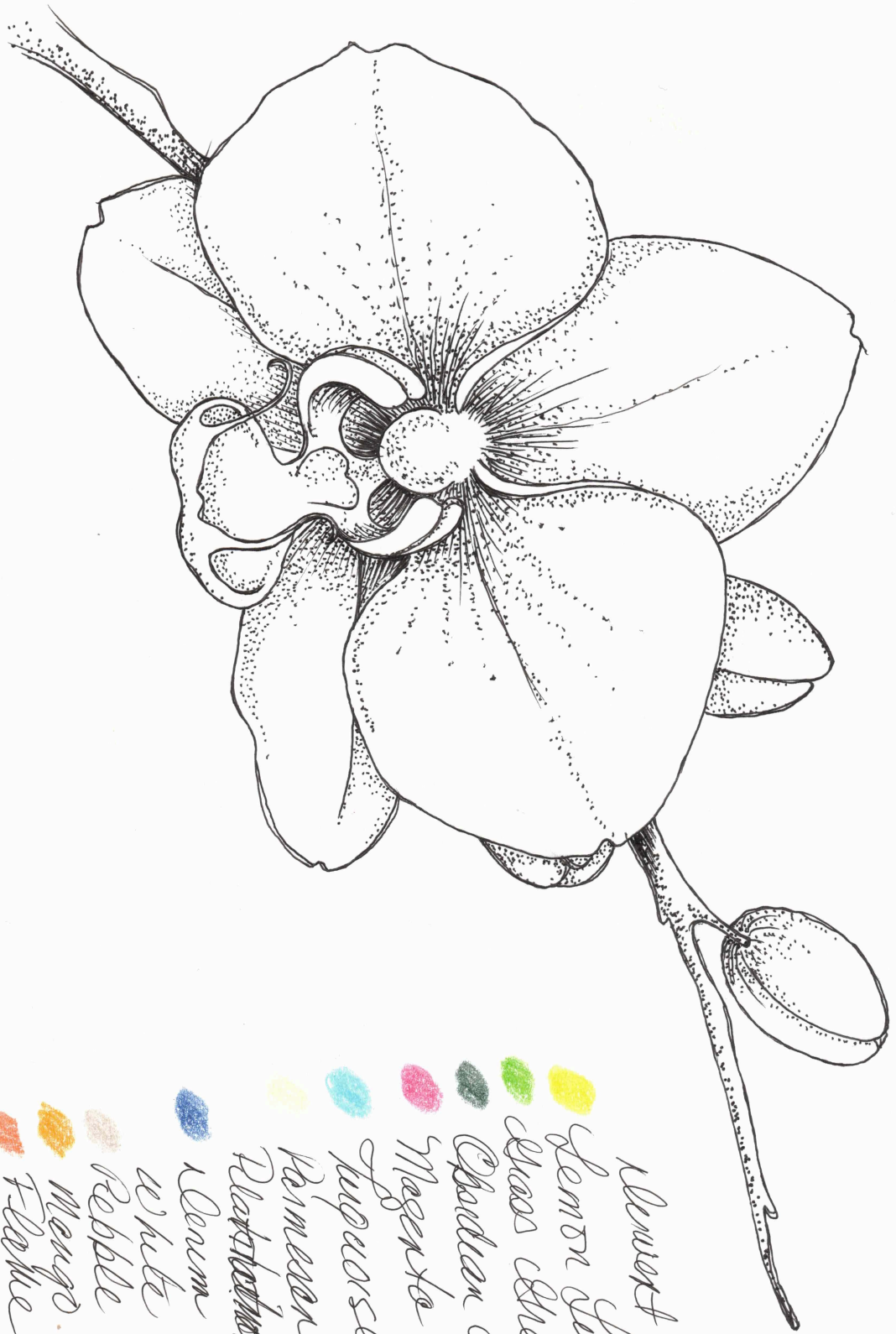
Add small highlights to the Bearded centre with a scattering of fine dots using the Opaque White Gel Pen. Highlight the top of the Stem with a light application of Lemon Lime.

Use the Blender to meld the colours , take your time and blend them carefully and in an elliptical fashion, one section at a time.

Refer Fig 6:

Using the Steel Edge Ruler and the Extra Fine Gold Paint Pen, draw in a simple border.

Sign and Date your work.



- Lemont Chrome Flow.  
 Lemont Lime  
 Grass Green  
 Chardon Green  
 Magenta  
 Turquoise Green  
 Vermilion 0020  
 ~~Platystrophia~~ 2250  
 Lencum 1200  
 White 2400  
 Rebble 2120  
 Mergo  
 Flame